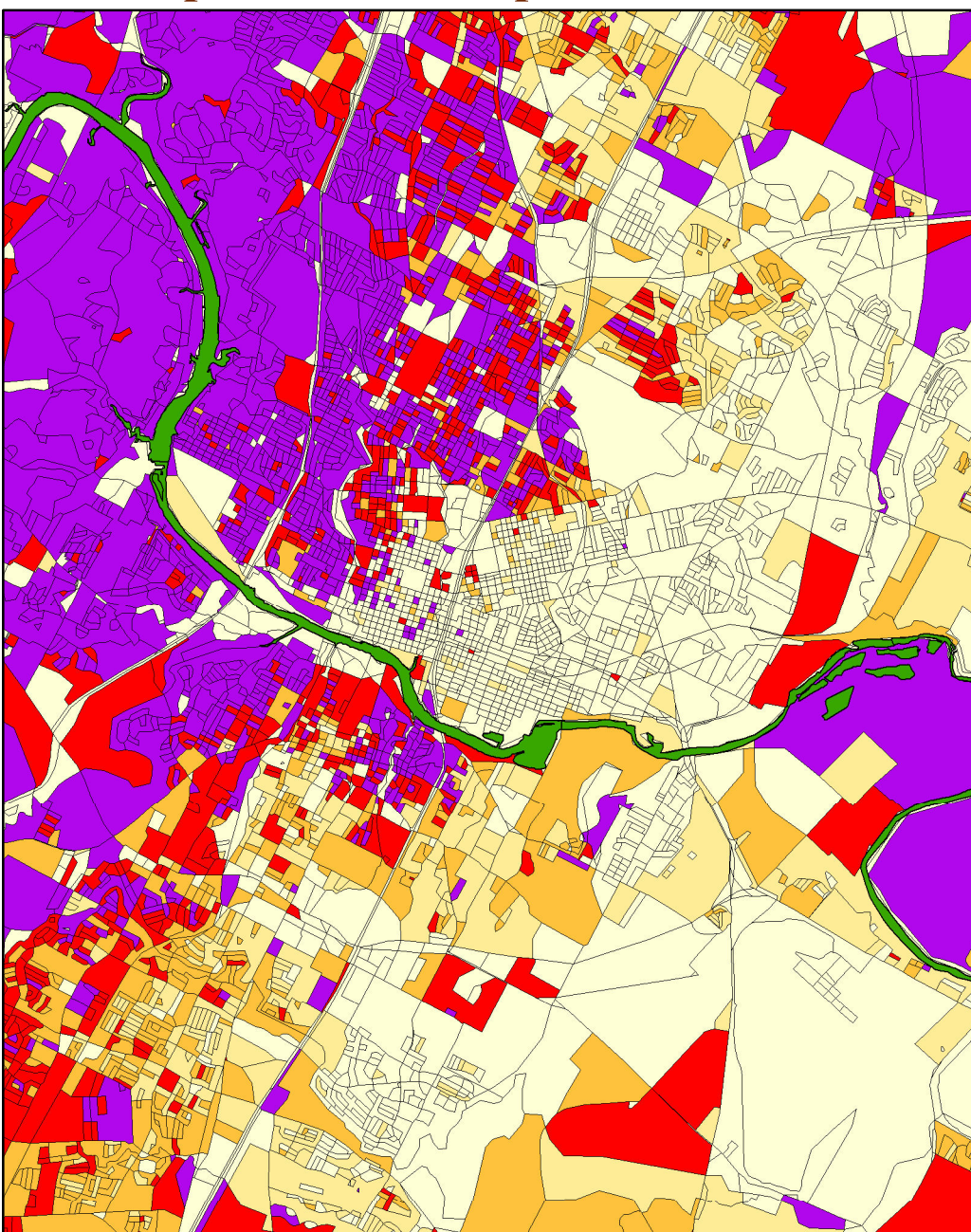


# Changing White Landscape--Urban Core

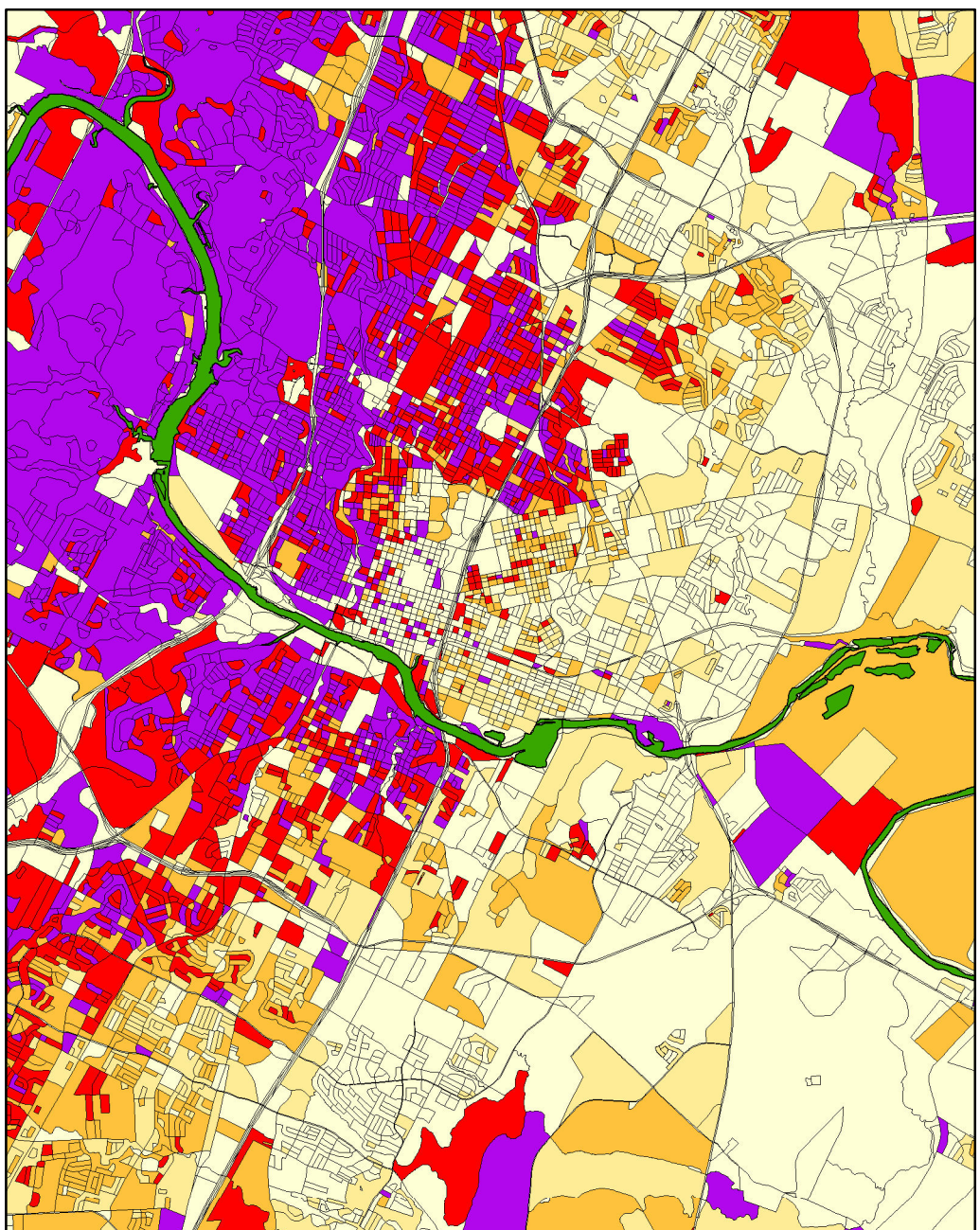
non-Hispanic White Population Concentrations, 2000 and 2010



**Census 2000 Data**  
**Census Blocks**

Percentage of the  
Total Population  
that is  
non-Hispanic White

Less than 20%
20% to 40%
40% to 60%
60% to 80%
80% Plus



**Census 2010 Data**  
**Census Blocks**

Percentage of the  
Total Population  
that is  
non-Hispanic White

Less than 20%
20% to 40%
40% to 60%
60% to 80%
80% Plus