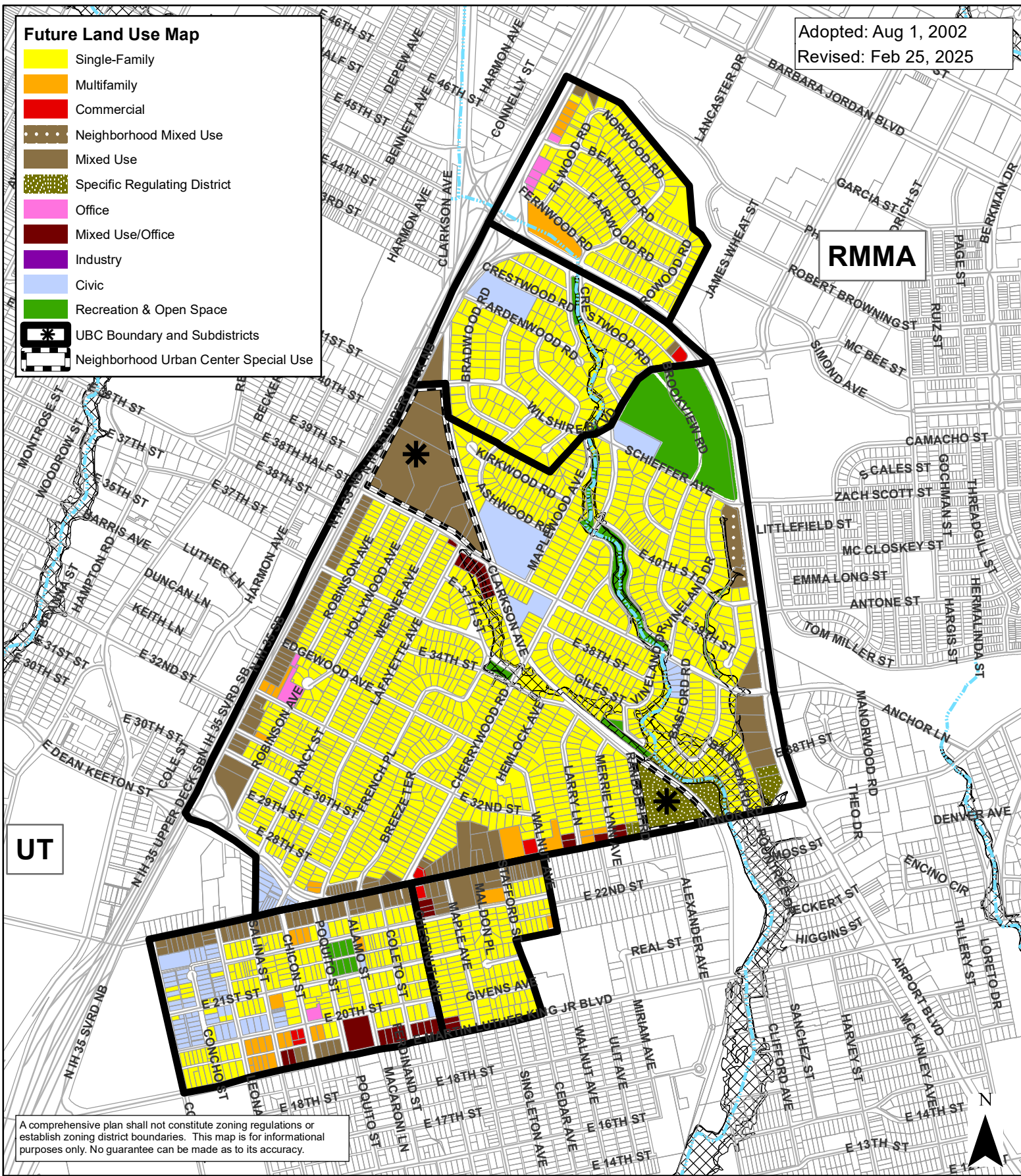


Adopted: Aug 1, 2002
 Revised: Feb 25, 2025

RMMA

Future Land Use Map

- Single-Family
- Multifamily
- Commercial
- Neighborhood Mixed Use
- Mixed Use
- Specific Regulating District
- Office
- Mixed Use/Office
- Industry
- Civic
- Recreation & Open Space
- UBC Boundary and Subdistricts
- Neighborhood Urban Center Special Use



UT

A comprehensive plan shall not constitute zoning regulations or establish zoning district boundaries. This map is for informational purposes only. No guarantee can be made as to its accuracy.

Upper Boggy Creek Neighborhood Planning Area: Future Land Use Map

This product is for informational purposes and may not have been prepared for or be suitable for legal, engineering, or surveying purposes. It does not represent an on-the-ground survey and represents only the approximate relative location of property boundaries.