



# RED LINE TRAIL PUBLIC MEETING

December 13, 2017

# RED LINE TRAIL PUBLIC MEETING

Preliminary Engineering Report Public Outreach

# AGENDA

- Introduction to Urban Trails
- Introduction of Project Team
- Project Summary
- Outline of Alternatives
- Evaluation Criteria
- Public Input - Questions

# URBAN TRAIL GOALS

1. Easy **access** to transportation + recreation users from all parts of the City.
2. **Connect** to on-street bicycle + sidewalk networks.
3. **Adequate width** to accommodate transportation + recreation users.
4. Include **trail amenities/features** that create unique greenways.
5. **Adequate funding** and resources to **maintain + operate**.
6. **Context-sensitive, environmentally sustainable, preservation + improvement upon wildlife** habitat.





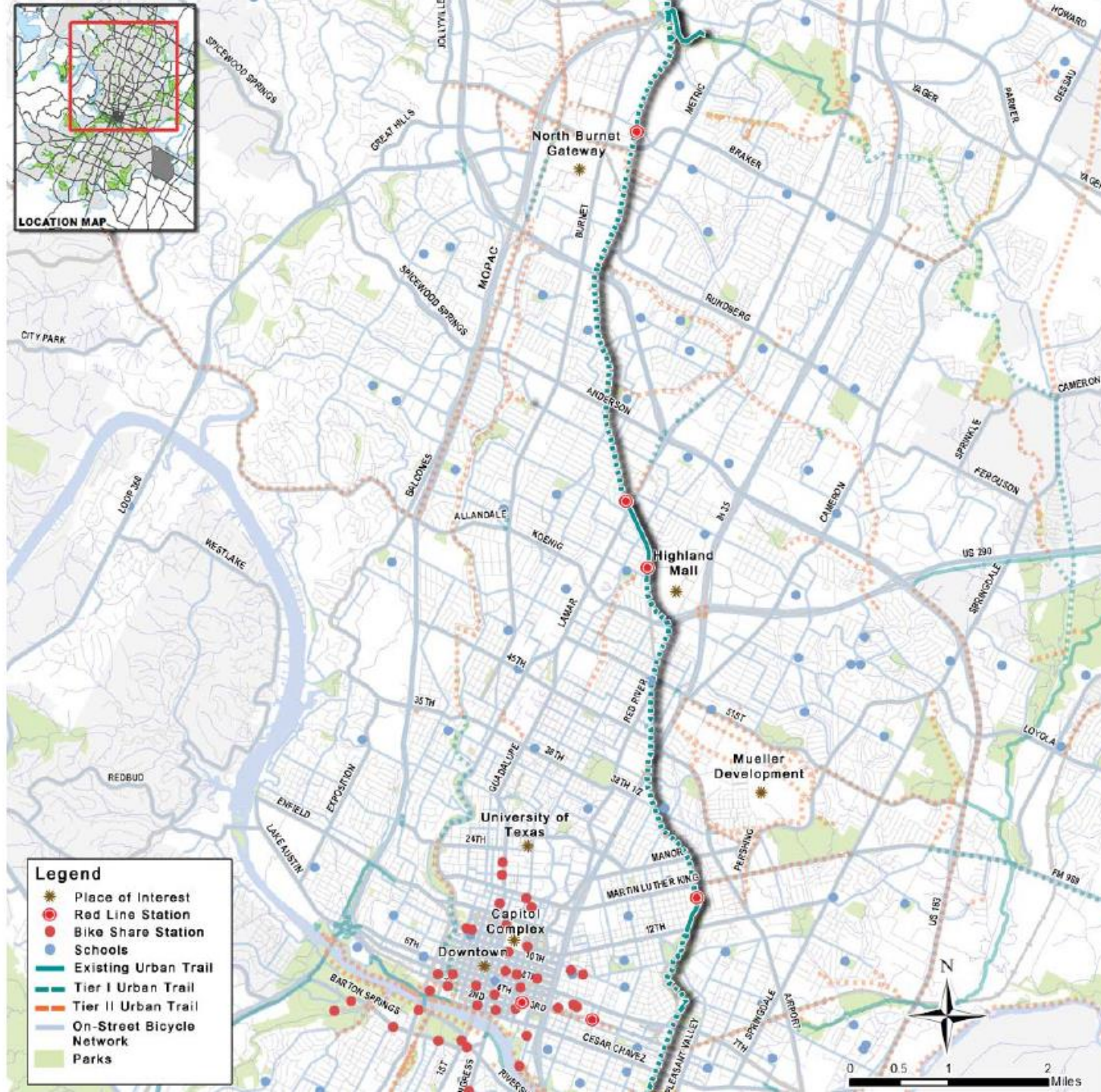
- 
- LOCATION MAP**
- Legend**
- Existing Urban Trail
  - Tier I Urban Trail
  - Tier II Urban Trail
  - Parks
  - Imagine Austin Activity Centers:
    - Town Center
    - Regional Center
    - Neighborhood Center
    - Job Center
  - Redevelopment in Sensitive Environmental Areas
- Map labels: FM 620, FM 7222, Loop 360, Bee Caves, MOPAC, 24th, Lamar, Braker, IH 35, IS 290, John Y Morris, Dwyer, FM 969, SH 130, SH 71, US 290, SH 45, Slaughter, Manaca, William Canan, Burleson, Airport, North arrow.

# PROJECT TEAM

- City Project Sponsor – Janae Spence, PWD
- City Project Manager – Diana Wang, PWD – PMD
- Public Information Officer - Alexandria Bruton
- Project Consultant – COA Engineering Services Division:
  - Christopher Newton – Project Engineer
  - Kimberly Gilbertson – Landscape Architect Associate

# PROJECT SUMMARY







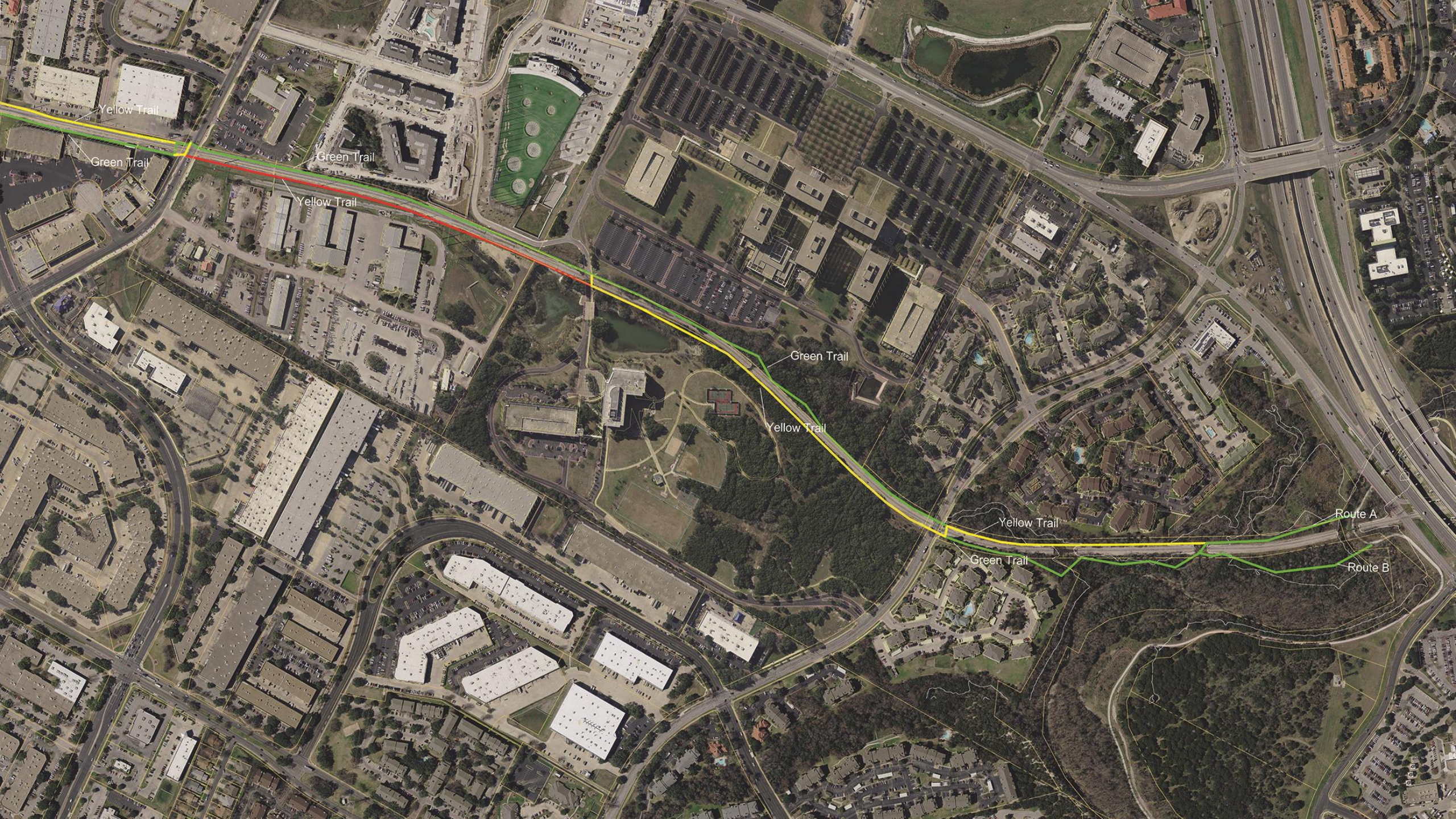


North Burnet  
Gateway

METAC

BRAKER





Yellow Trail

Green Trail

Green Trail

Yellow Trail

Green Trail

Yellow Trail

Yellow Trail

Green Trail

Route A

Route B



# PROJECT FACTS

- Project Funded by 2016 Mobility Bond Program
- Preliminary Engineering Report: April 2017 –May 2018
- Design Phase: June 2018 – Early 2020
- Construction: Early 2020 – Late 2022
- Project website: <http://www.austintexas.gov/redlinetrail>



# Roadway crossings





# Creek crossings and elevation changes





# Creek crossings and elevation changes





# Narrow Spans (Easement/ROW Acquisition)





# Possibility of CapMetro's expansion to two tracks

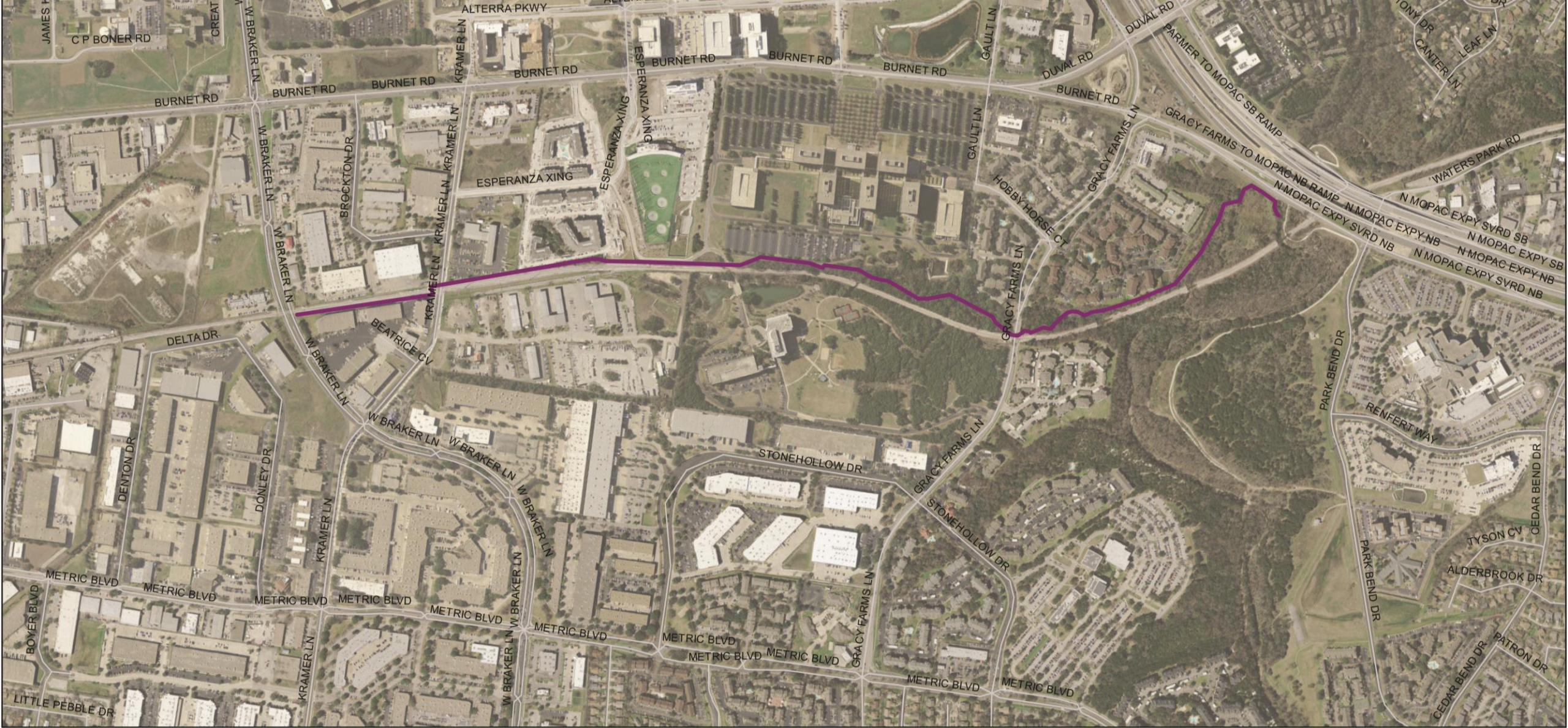




# EVALUATION FACTORS

- Public feedback
- Cultural Assessment
- Community Impact
- Cost
- Topography, Accessibility
- Tree Canopy Impacts
- Connectivity
- Location of Utilities
- Property Ownership
- Surrounding Land Use
- Floodplain/Drainage
- Environmental
- Erosion Hazard Zone
- Wildlife Habitat





- Legend**
- REDL\_MAIN
  - TRANSPORTATION.street\_segment



RED LINE TRAIL  
TRAIL ALIGNMENT





**austin**  
**MOTION**



12/13/2017