

Proposed Mural Design



Proposed Site Location (On Retaining Walls Around Playground Area)



Sample of Proposed Mosaic Artist's Work

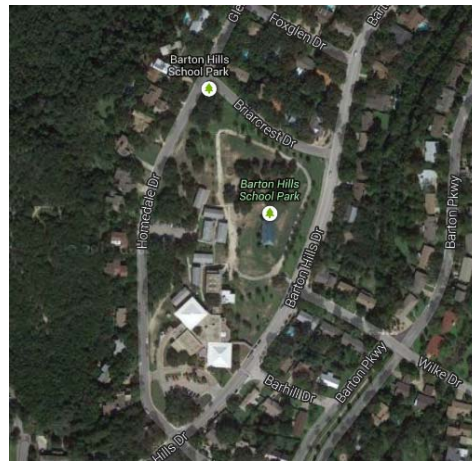
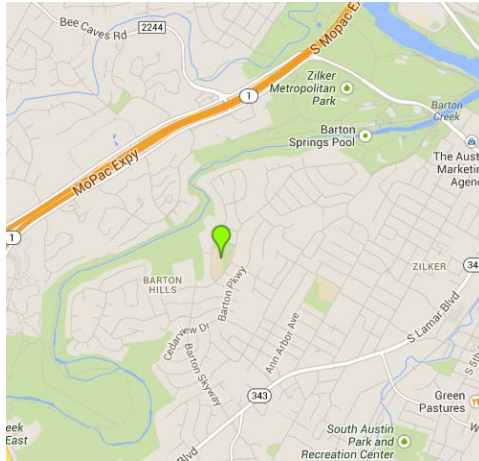


Neighborhood Partnering Program Application Summary

Project Name: Barton Hills Mosaic

Applicant: Barton Hills-Horseshoe Bend Neighborhood Assn. /
Friends of Barton Hills Community Park

Project location: Barton Hills Community Park



Project Scope & Description

- Project is to create a mosaic on the pre-existing retaining walls outside of the playground area of Barton Hills park. Request from the City is for the materials for the mural, while the community is providing the artists and volunteer labor to install and maintain the art.
- Project has been reviewed and approved by staff at Parks and Recreation Department, Austin Independent School District, and Arts in Public Places, and was unanimously approved by the Arts Commission on August 18th.

Project Costs & Cost Match

Total Project Costs: \$90,212

Friends of Barton Hills Community Park – Volunteer Hours & In-Kind Professional Services	\$56,980
City of Austin – Materials & Contingency	\$33,232

Friends of Barton Hills Community Park Cost Share: \$58,852

Volunteer Hours & In-Kind Professional Services	\$56,980
Community Maintenance Match (Not Included in Total Project Costs)	\$1,872

Project Category: Medium: \$75,000- \$150,000

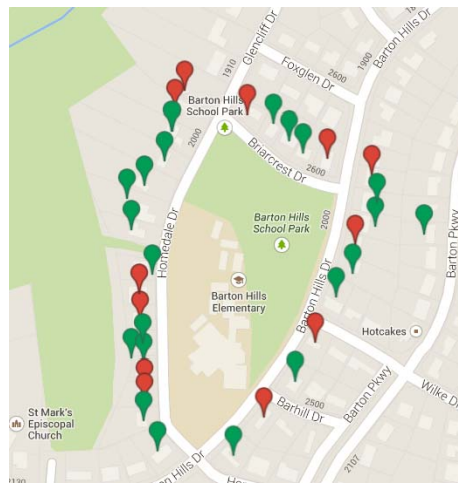
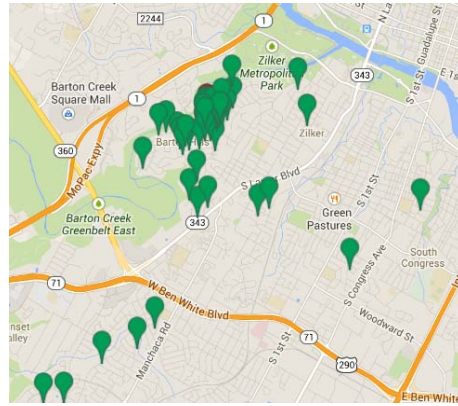
Cost Match Requirement (Community Cost Share / Total Project Costs): Met

Required Minimum Community Match (%):	25%
Actual Community Match (%)	65%

Description of Support, Participation & Maintenance

Evidence of Support Map

Total Number of Support Signatures	60
Number on petition who plan to actively participate	13
Impacted Households	32
Impacted Stakeholders Signatures	20
Percentage	63%



- Community has spent two years planning and researching for the mosaic project.
- Students from Barton Hills Elementary School will be participating in making some of the mural elements in their art class.
- Barton Hills Neighborhood Association is providing a stipend for the participating artists.
- Volunteers to install the mural will be recruited from the Barton Hills Neighborhood Association, alumni and parents of Barton Hills elementary, the O’Henry Middle School mosaic club, and students at St. Edwards.
- Project will be maintained by a group of five to eight volunteers through an annual “Park Day” held by the neighborhood association and an additional day per year where Friends of Barton Hills Community Park.

Evidence of Support Criteria: Met

Quality of Life Enhancements & Incorporation of City Initiatives

- | | |
|---|--|
| <ul style="list-style-type: none"> • Project would be the first community-supported artistic contribution to the neighborhood. • Project’s goal is to bring people together both through the design of the art and in its installation. | <ul style="list-style-type: none"> • Project implements mosaic component of the Barton Hills Community Park Master Plan. • Project is not located in an approved neighborhood planning area. |
|---|--|

