

# PROJECT OVERVIEW



Funded by the 2016 Mobility Bond, the Red Line Trail will connect Braker Lane and the Capital Metro Kramer Red Line Station to the existing Northern Walnut Creek trail system.

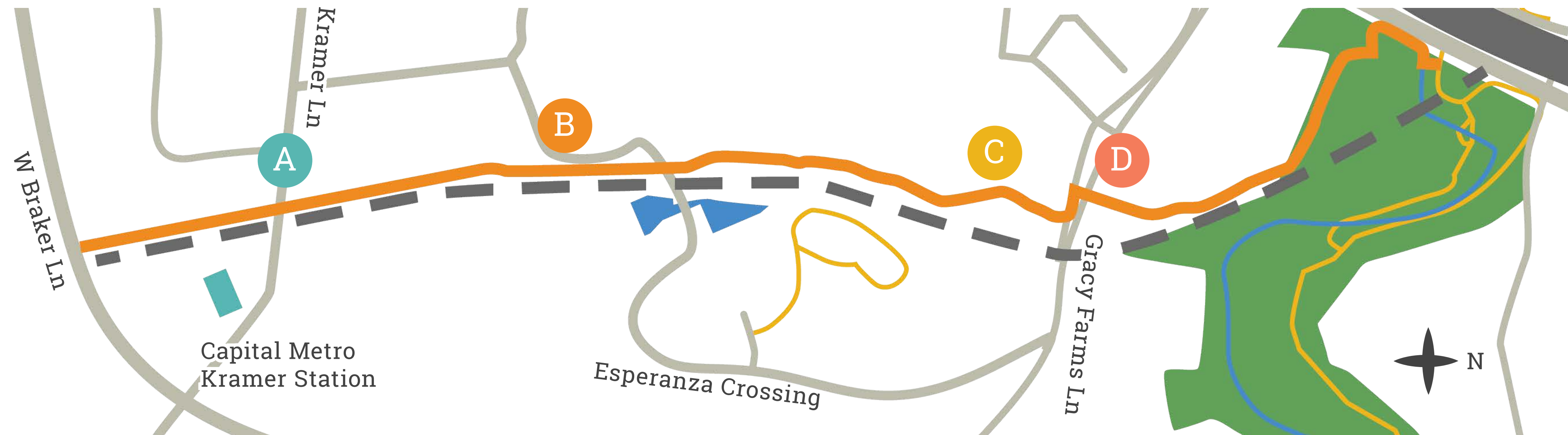
The trail location is from Northern Walnut Creek Trail to Braker Lane along the Red Line.





# EXISTING CONDITIONS

## Cross Sections



A - Kramer Station



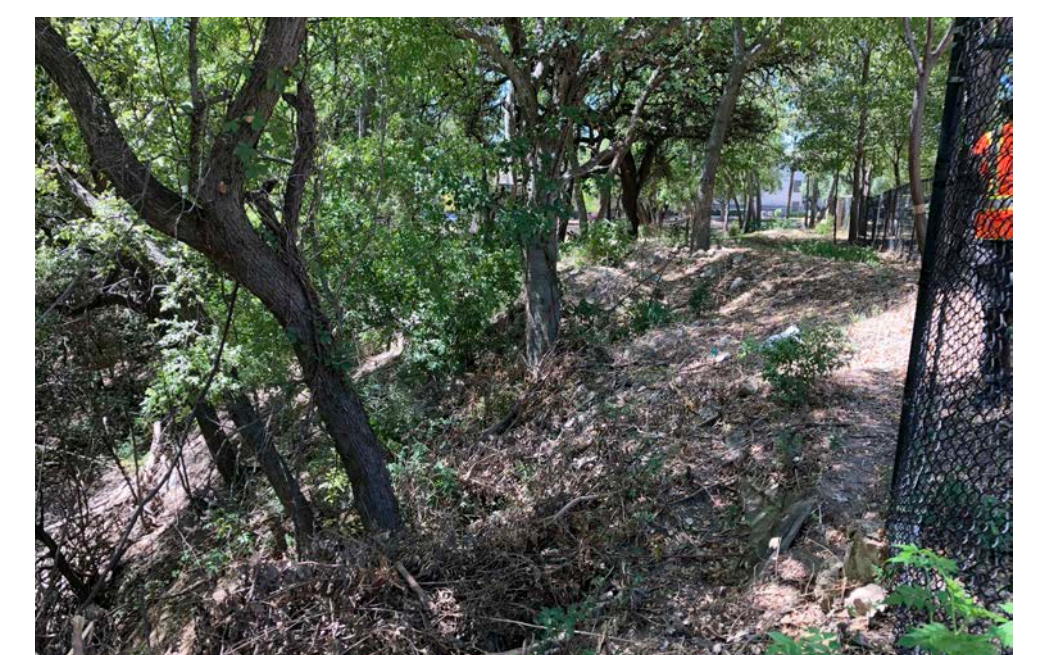
B - Addison at Kramer Station



C - IBM Campus



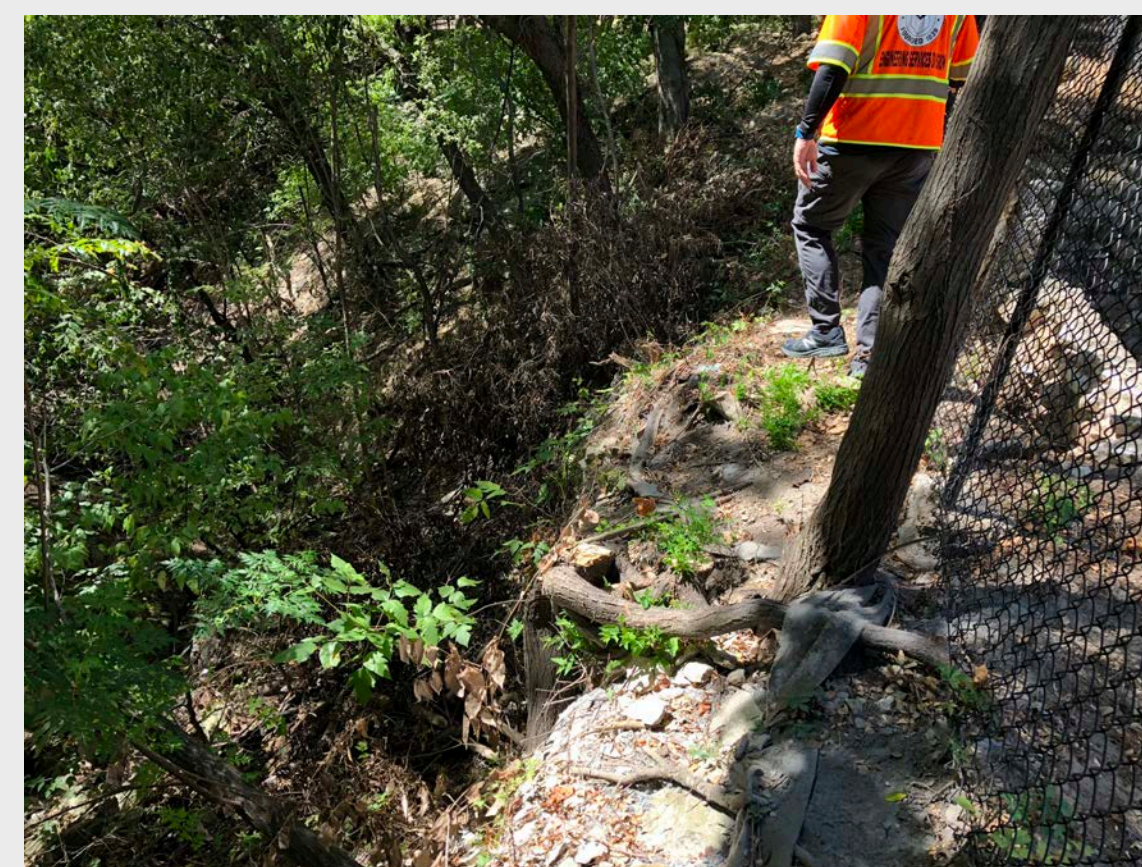
D - Village at Gracy Farms



## Considerations for Red Line Trail



Roadway Crossing



Environmental Considerations



Space Constraints



# PROJECT SUMMARY

## Project Timeline



## Trail Features

- Connects Braker Ln and Capital Metro Kramer Station with Northern Walnut Creek trail system
- Concrete trail
- Lighting elements

### Dimensions:

- 15 foot width
  - 10 feet of two-directional bicycle lane
  - 5 foot ADA accessible pedestrian path
- 1.67 mile length (8,800 feet)



# DRAFT RECOMMENDATIONS

## Cross Sections (facing north)



A - Kramer Station



B - Addison at Kramer Station



C - IBM Campus



D - Village at Gracy Farms

