

EXHIBIT F
TO MASTER DEVELOPMENT AGREEMENT

Takedown Relationships

[SEE ATTACHED PAGE(S)]

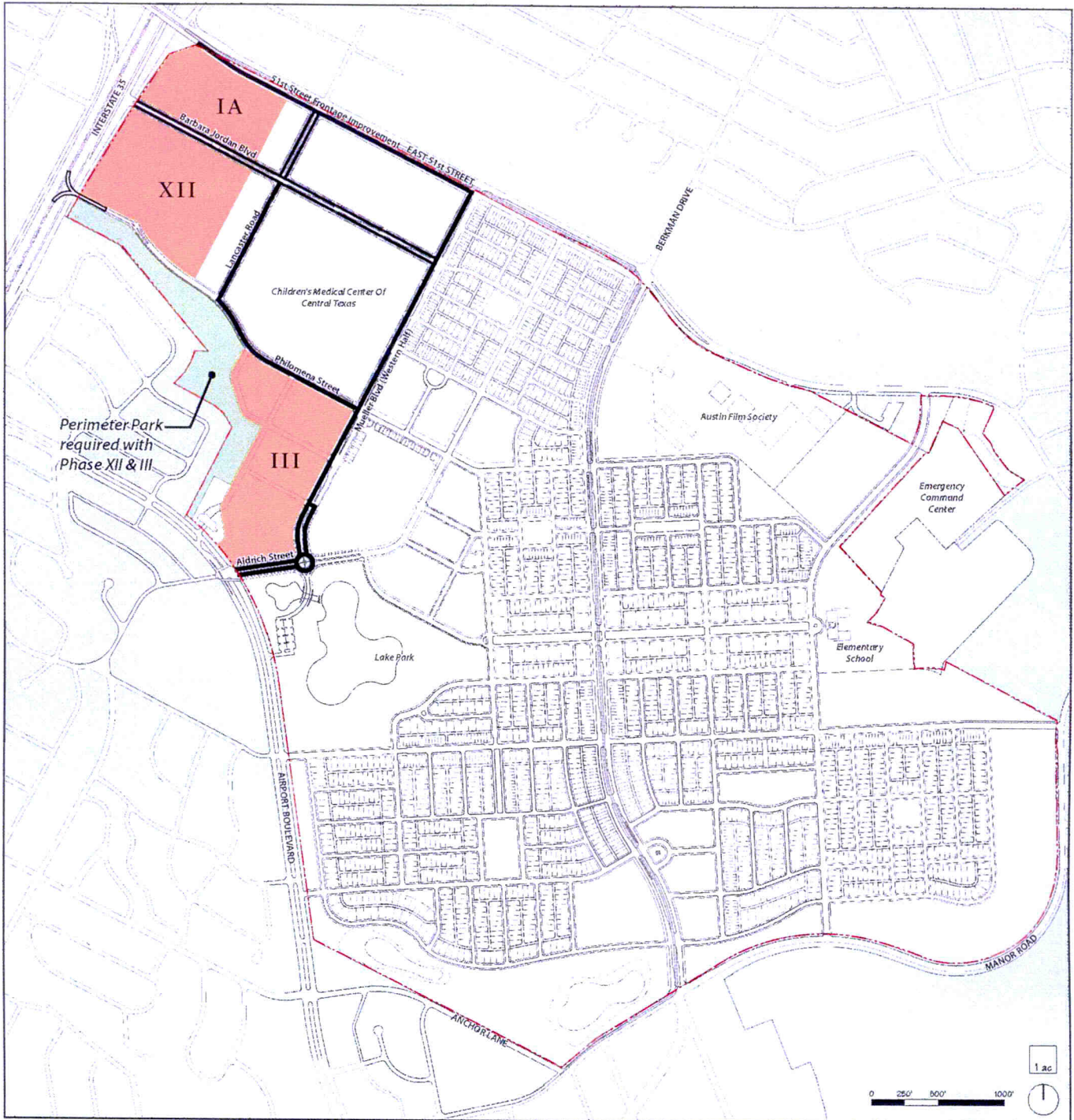


EXHIBIT F: TAKEDOWN RELATIONSHIPS
FIRST REQUIRED TAKEDOWN

	Developable Land	49.87 ac*
	Open Space	13.00 ac
	Backbone R.O.W.	19.48 ac
TOTAL TAKEDOWN		82.35 ac
* Including In-Tract Infrastructure		

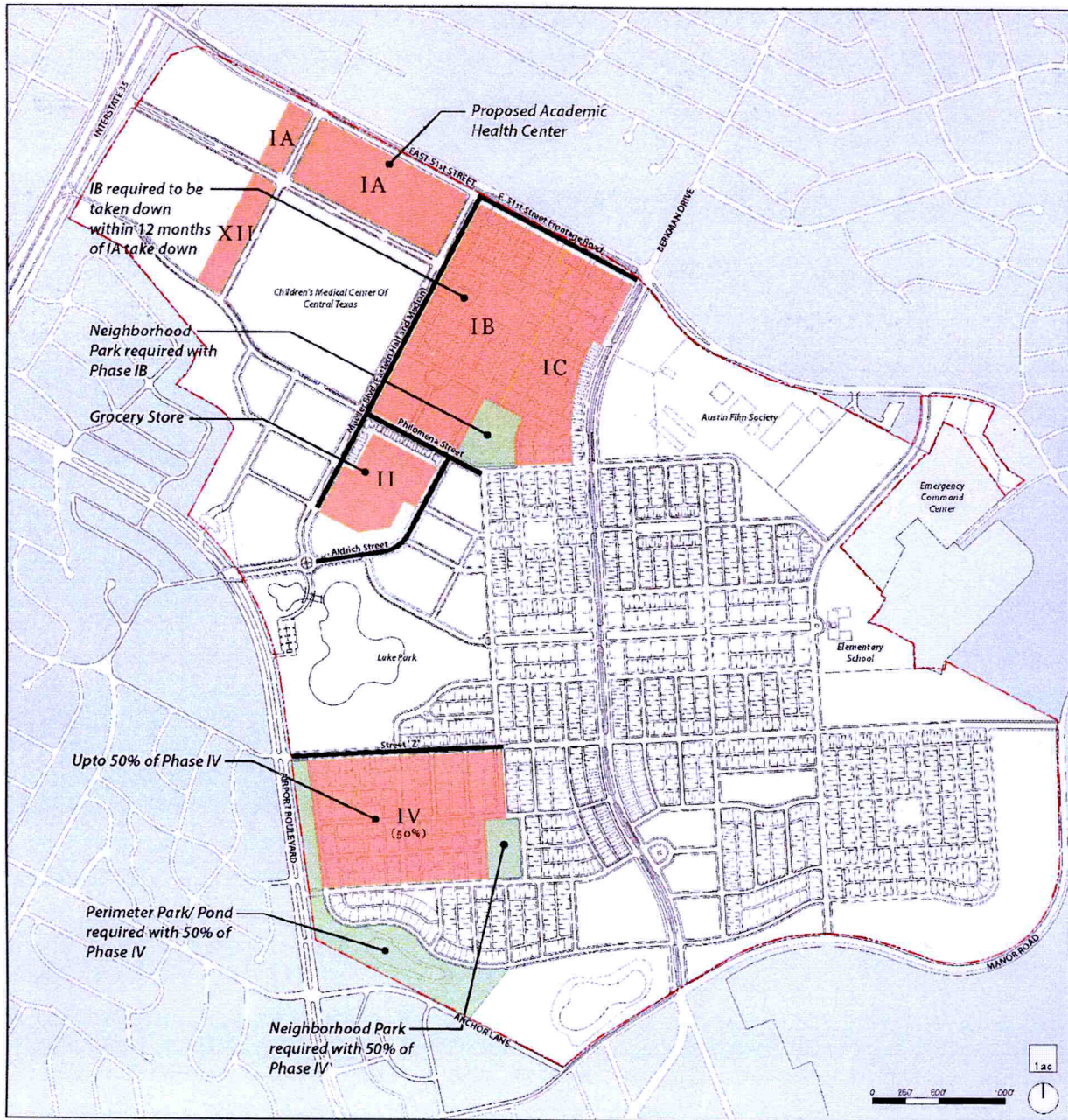


EXHIBIT F: TAKEDOWN RELATIONSHIPS
ILLUSTRATIVE SECOND TAKEDOWN PRIOR TO LAKE PARK

■ Developable Land	106.38 ac*
■ Open Space	21.59 ac
— Backbone R.O.W.	12.94 ac
TOTAL SECOND TAKEDOWN PRIOR TO LAKE PARK	
	140.91 ac
* Including In-Tract Infrastructure	

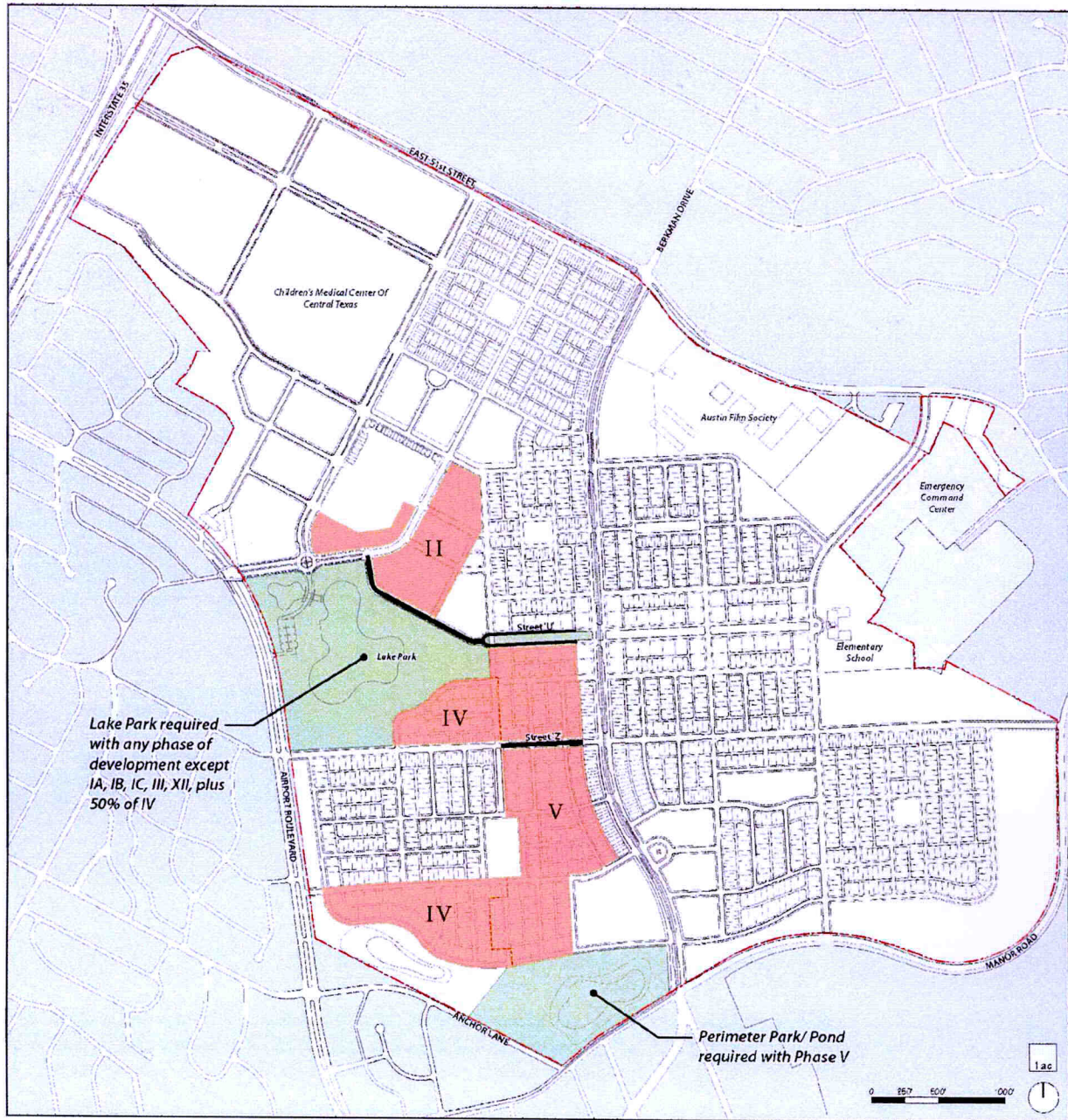


EXHIBIT F: TAKEDOWN RELATIONSHIPS
ILLUSTRATIVE THIRD TAKEDOWN

	Developable Land	67.70 ac*
	Open Space	51.18 ac
	Backbone R.O.W.	3.18 ac
TOTAL POTENTIAL		
3rd TAKEDOWN		122.06 ac
* Including In-Tract Infrastructure		

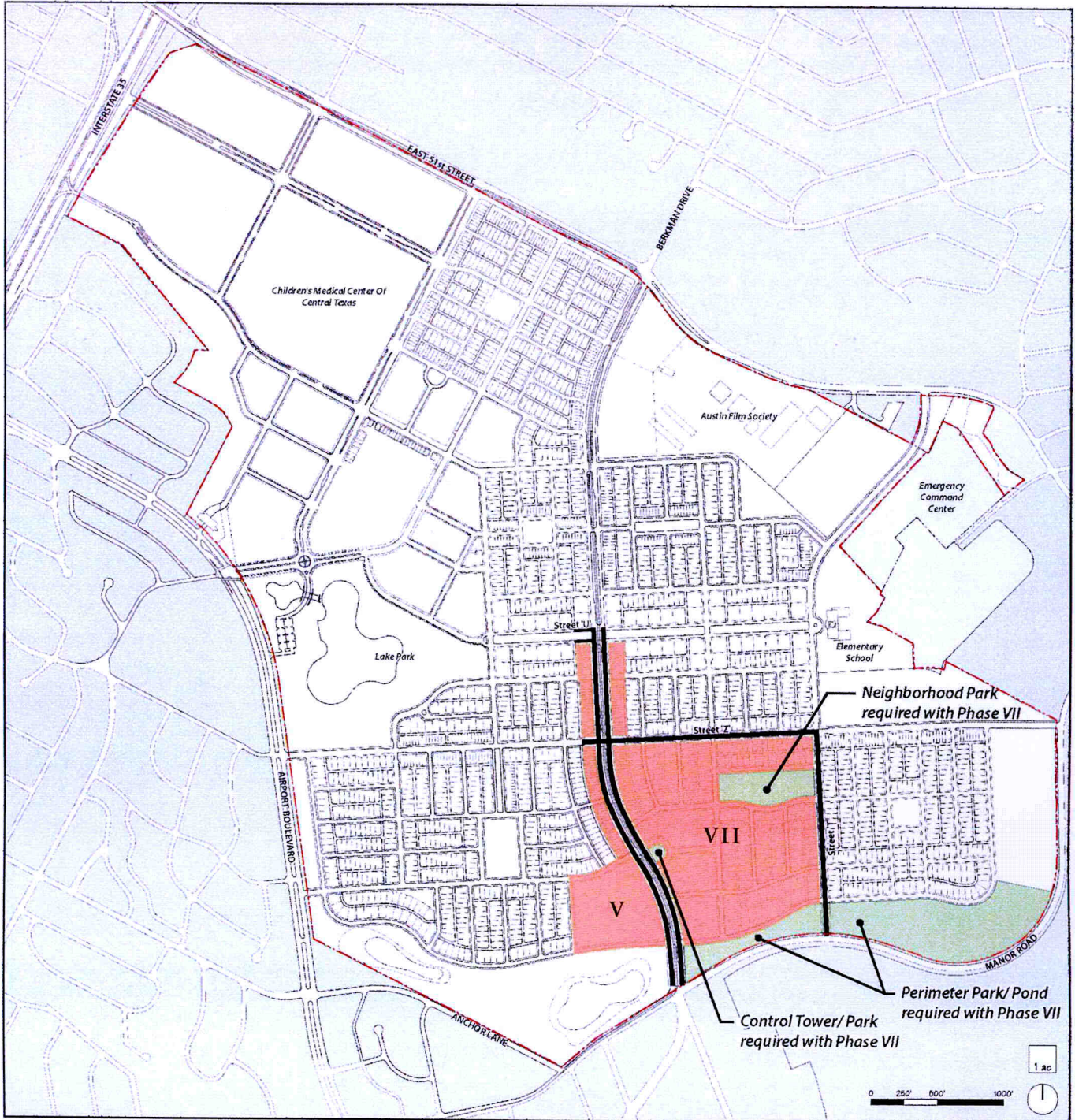


EXHIBIT F: TAKEDOWN RELATIONSHIPS
ILLUSTRATIVE FOURTH TAKEDOWN

	Developable Land	53.06 ac*
	Open Space	21.52 ac
	Backbone R.O.W.	13.47 ac
TOTAL POTENTIAL		
4th TAKEDOWN		88.05 ac
* Including In-Tract Infrastructure		

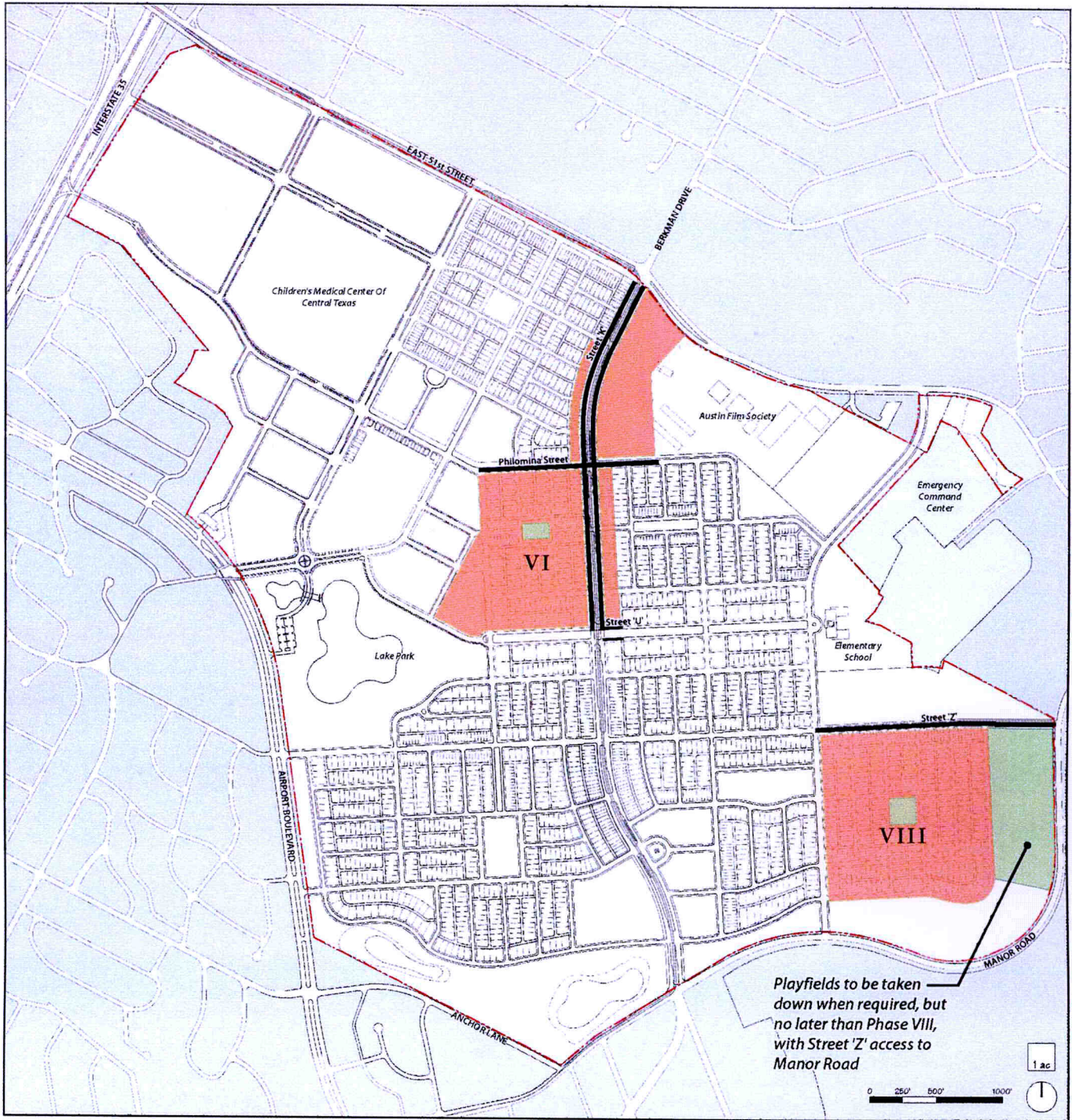


EXHIBIT F: TAKEDOWN RELATIONSHIPS
ILLUSTRATIVE FIFTH TAKEDOWN

	Developable Land	74.38 ac*
	Open Space	14.30 ac
	Backbone R.O.W.	15.17 ac
TOTAL POTENTIAL		
5th TAKEDOWN		103.85 ac
<small>* Including In-Tract Infrastructure</small>		

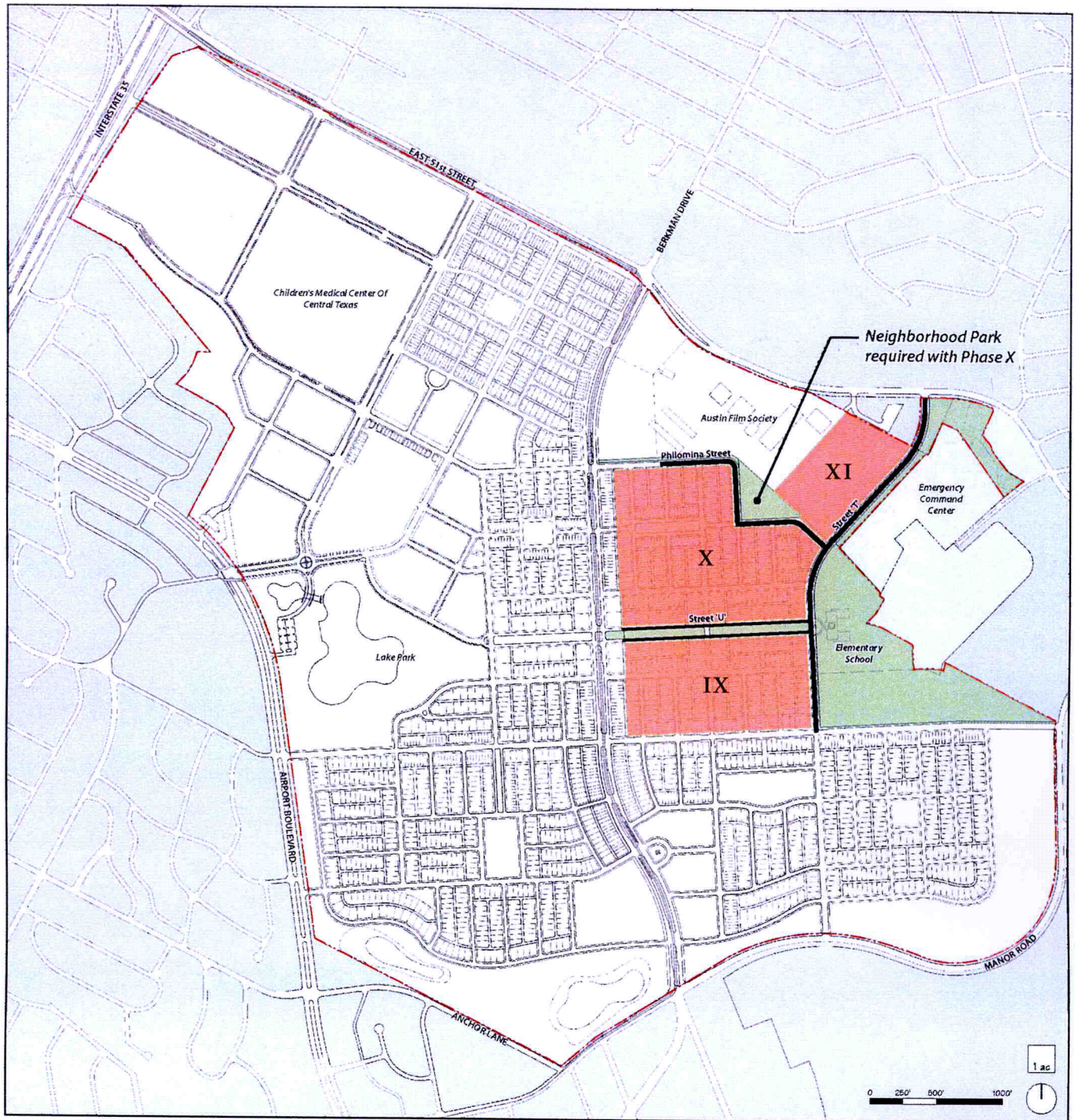


EXHIBIT F: TAKEDOWN RELATIONSHIPS
ILLUSTRATIVE SIXTH TAKEDOWN

 Developable Land	65.42 ac*
 Open Space	33.43 ac
 Backbone R.O.W.	8.78 ac
TOTAL POTENTIAL	
6th TAKEDOWN	107.63 ac
* Including In-Tract Infrastructure	