

### OVERVIEW

The planned improvements to Rundberg Lane/IH-35 and Rundberg Lane/Middle Fiskville Road are designed to increase safety and improve mobility by updating medians for better access management, relocating Capital Metro bus stops at Rundberg Lane/Middle Fiskville Road, and adding a new pedestrian crossing island at Rundberg Lane/IH-35 to enhance connectivity for people walking and people riding bikes.

### PLANNED IMPROVEMENTS

- Closing the median gap on Rundberg Lane, west of IH-35 for access management
- Painting median curbs yellow and adding reflective pavement markings on both sides of Rundberg Lane for visibility
- Upgrading pedestrian infrastructure, including restriping high-visibility crosswalks, adding Americans with Disabilities (ADA)-accessible curb ramps, and extending the median at Rundberg Lane/IH-35 to make room for a new pedestrian crossing island
- Driveway modifications to increase safety
- Relocation of Capital Metro bus stop at Rundberg Lane/Middle Fiskville Road for easier and safer customer access

### TIMELINE

- Anticipated construction start: Summer 2021
- Construction anticipated to last 6 months\*

\*Barring weather delays or other unforeseen circumstances

### FUNDING

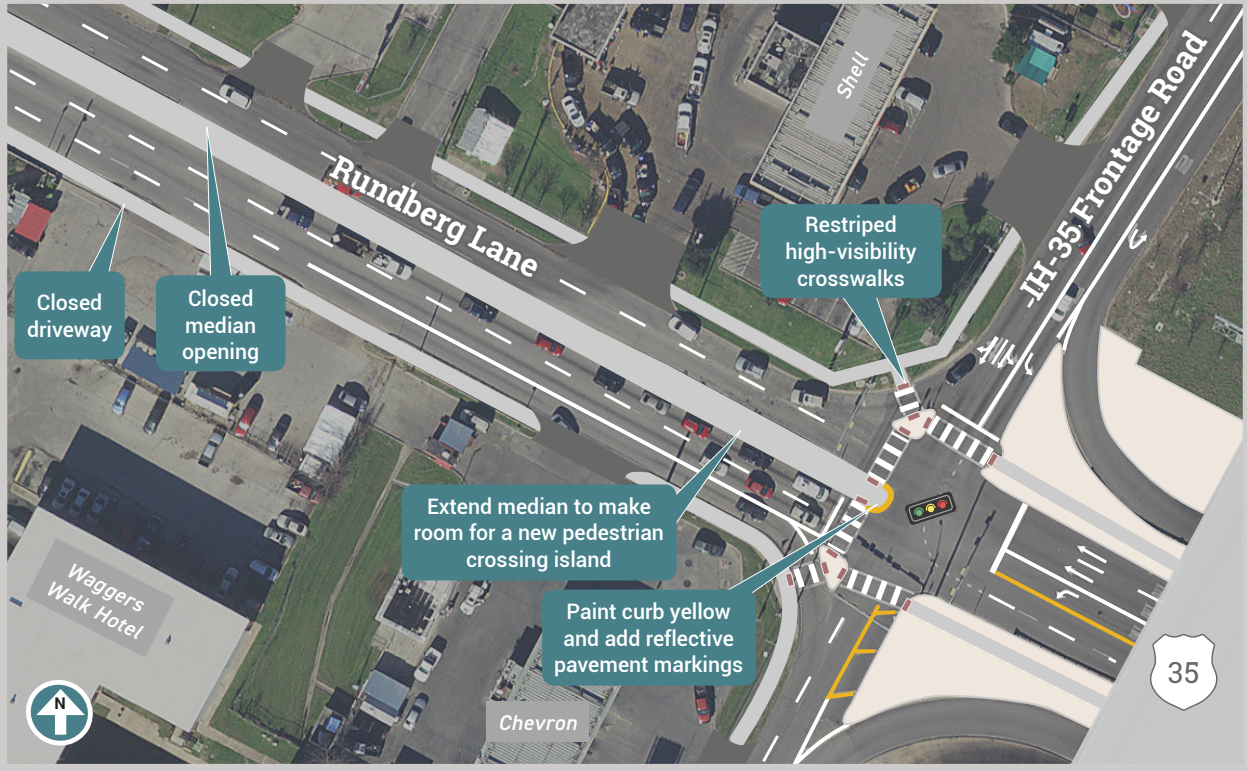
This project is anticipated to cost \$380,000.00.

### 2016 MOBILITY BOND

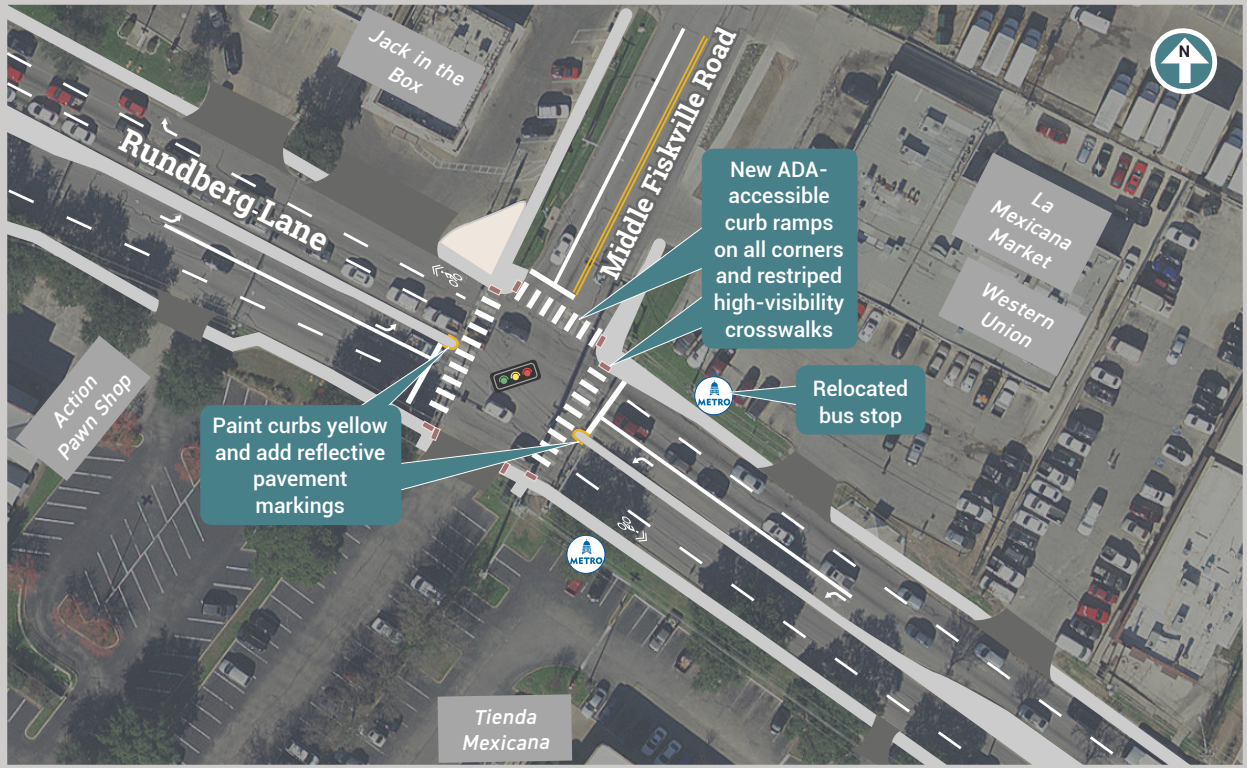
The 2016 Mobility Bond dedicates \$15 million of Local Mobility funding towards Intersection Safety/Vision Zero projects, to construct improvements at top crash intersections around Austin.

To learn more about the 2016 Mobility Bond's Intersection Safety/Vision Zero Program, visit [AustinTexas.gov/2016BondIntersections](http://AustinTexas.gov/2016BondIntersections)

# RUNDBERG LANE / IH-35



# RUNDBERG LANE / MIDDLE FISKVILLE ROAD



\*Maps not to scale. Not all roads and businesses may be shown or named.