



Building a Resilience Hub Network in Austin

When disaster strikes, people across Austin need trusted community spaces to meet basic needs. When paired with ongoing emergency planning, disaster response, and sheltering plans, a Resilience Hub Network can help provide relief during extreme weather events and other emergencies.

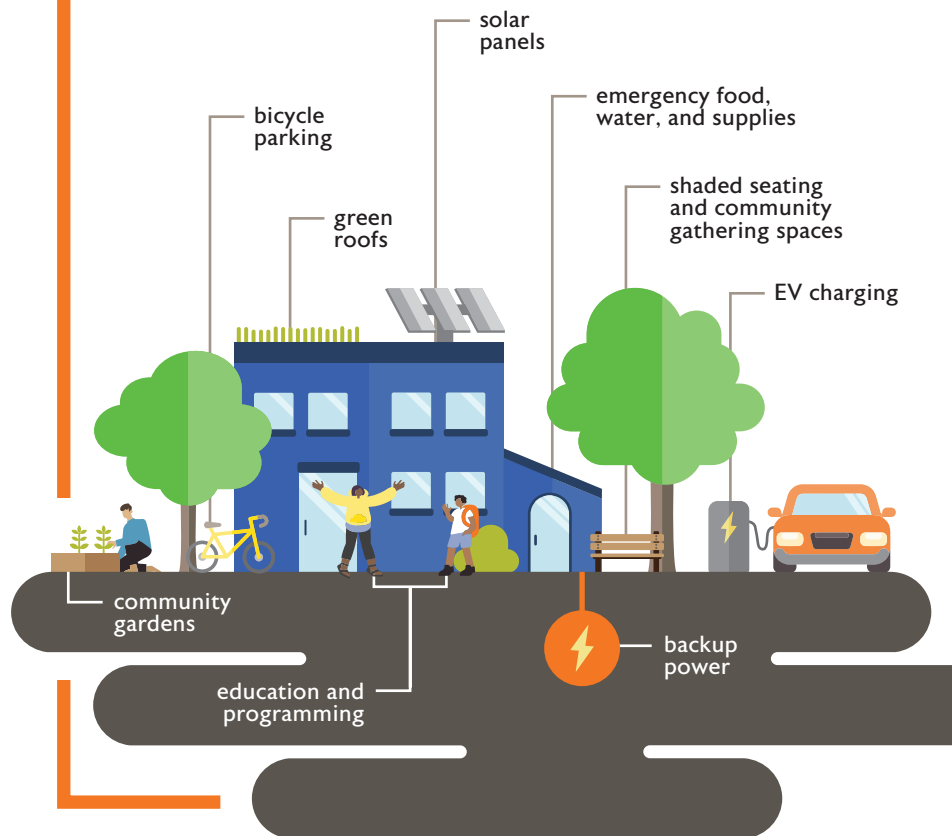
Why do we need a Resilience Hub Network?

As climate change brings more frequent severe weather and other disasters, there is a need for accessible community spaces, supply distribution centers, backup power and water, safe temporary shelter, and better engagement and information around emergency preparedness, response, and recovery. Although disasters and severe weather can affect everyone, low-income communities and communities of color are disproportionately impacted.

What is a Resilience Hub Network?

A Resilience Hubs Network is a series of community-focused facilities that offer day-to-day services and support the community before, during, and after a disaster. While some hubs can offer information, accessible bathrooms, and cell phone charging, others can shelter residents and provide food and water during an emergency.

What might I find at a Resilience Hub?



What's happening locally?

The City of Austin is working with the Austin Independent School District, Travis County, and other partners to pilot six Resilience Hubs in East Austin with plans to build a future network of hubs to serve the greater community.



For more information on preparing for the effects of climate change, visit: austintexas.gov/climatepreparedness



Questions?

Contact the Office of Sustainability at: sustainability@austintexas.gov