



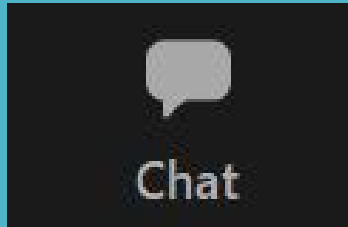
# Hyde Park Water and Wastewater Renewal

April 20, 2022

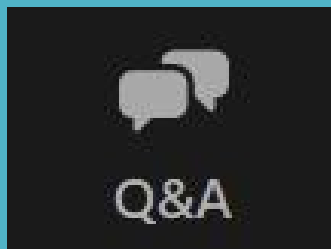
*Welcome! The meeting will start momentarily.*

# Welcome and Meeting Logistics

Ask for technical assistance from the meeting hosts in the Chat



Submit questions or comments for the presenters in the Q&A



# Agenda

- Welcome and Logistics
- Project Team Introductions
- Project Overview
- Questions and Answers
- Conclusion

# Introductions

- Lisa Whitworth, Project Manager, Public Works
- Robert Wood, Engineering Construction Inspector, Public Works
- Joe Hoepken, Project Sponsor, Austin Water
- Fred Ramirez / Hollie Campbell, Design Engineers, Jacobs
- Michael Snyder, Contractor, Santa Clara
- Emlea Chanslor, Communications, Austin Water

# Project Overview

- This project will replace and update approximately 18,940 linear feet of aging water and wastewater lines
- In addition, 23 fire hydrants will be replaced and some will be placed in new locations to meet current spacing requirements.
- Construction is scheduled to start in May and will take approximately 30 months to complete.
- Roads after construction will be resurfaced.



### Hyde Park Water and Wastewater Pipeline Renewal





# Project Overview – Construction Type



Open-Cut Trenching



# What to Expect During Construction

- **Construction Overview:** The contractor will use heavy equipment to dig trenches for the new water and wastewater lines. The roads will be patched after the line is installed. All roads will be repaved at the end of the project.
- **Construction Phases:** Crews will work in front of your property a number of times to complete each phase of the project, including excavation, pipe installation, temporary paving, testing, repairs, if necessary, and final paving.



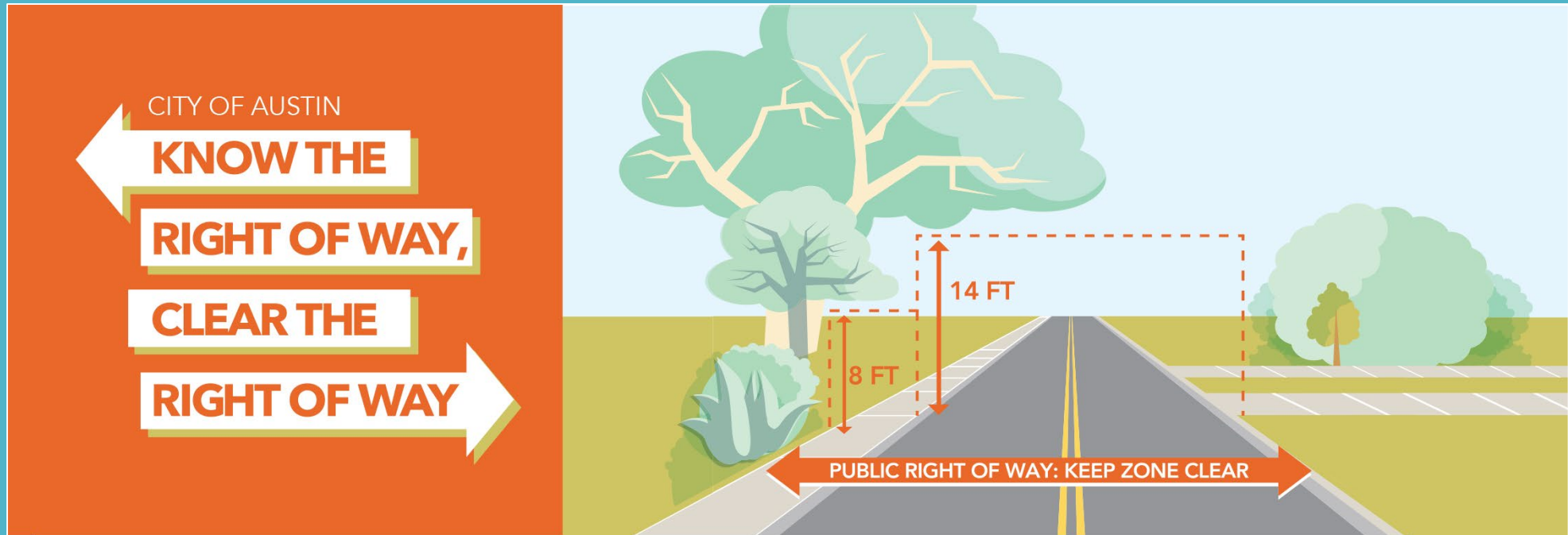
# What to Expect During Construction

**Right of Way:** Most work will be limited to the right of way. In many cases, the right of way is located 10-15 feet behind the curb, in an area that you may consider to be part of your lawn.

It may be necessary for you to remove landscaping or other personal items in the right of way before your new service lines are connected.



# What to Expect During Construction



**Tree Trimming:** The contractor may need to do some tree trimming over the Right of Way where trees are hanging lower than 14 feet.

# What to Expect During Construction

- **Traffic:** Lanes of traffic will be closed. You will always have access to your home - for brief periods, driveway access may be limited.
- **Utility Service:** At some point your water or wastewater service will be temporarily interrupted to connect to the new line, but most likely just for a few hours on a single day. We will notify you via flyers posted on the door, prior to turning off the water. Emergency outages are possible should a water line break during construction.
- **Work Hours:** Work hours for the project are generally 7 a.m. – 7 p.m. Weekend work will be scheduled as required.

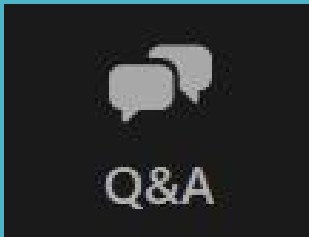


# Project Communications

- **Email Newsletter:** Please sign up to receive updates by email. You can sign up at [austintexas.gov/hydeparkwater](https://austintexas.gov/hydeparkwater)
- **Project Notices:** At least 48-hours before a planned water shut-off, the project inspector will leave a notice on your front door.

# How to Submit a Question

- **By phone:**
  - Press \*9 if you'd like to speak.
  - Once you hear the prompt, press \*6 to unmute and speak.
- **Online:**
  - Submit questions or comments in the Q&A.



# Project Contacts

## **Project Manager:**

Lisa Whitworth

Public Works

512-974-5615

[Lisa.Whitworth@austintexas.gov](mailto:Lisa.Whitworth@austintexas.gov)

## **Project Inspector:**

Robert Wood

Public Works

512-745-1141 cell

[Robert.Wood@austintexas.gov](mailto:Robert.Wood@austintexas.gov)

## **Community Outreach:**

Emlea Chanslor

Austin Water

512-972-0145

[emlea.chanslor@austintexas.gov](mailto:emlea.chanslor@austintexas.gov)