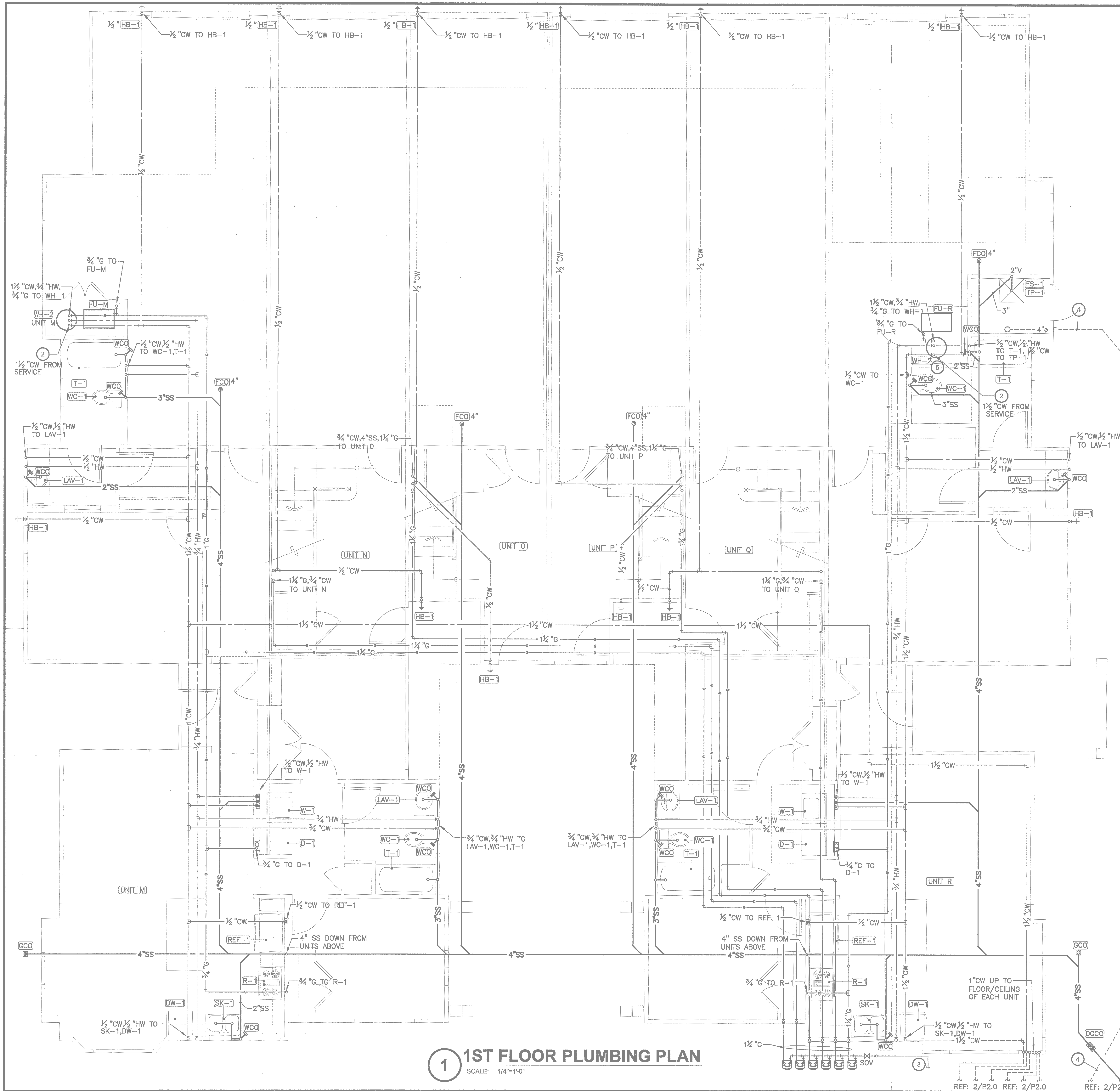


TYPOLOGY 8

Multiplex/Sixplex



- ### KEYED NOTES

 - BUILDING DRAIN: PROVIDE 4"W BUILDING DRAIN. REFER TO THE PIPE SCHEDULE FOR ACCEPTABLE MATERIALS. UPC 7-3; BUILDING HAS 120 DRAINAGE FIXTURE UNITS (DFU). EACH UNIT HAS 20 DFU'S. REFER TO THE PLUMBING RISER DIAGRAMS FOR EACH UNIT FOR ADDITIONAL INFORMATION.
 - DOMESTIC WATER: PROVIDE 1 1/2"CW DOMESTIC WATER FROM THE WATER SERVICE TO A SHUTOFF VALVE IN THE WATER HEATER CLOSET AT EACH UNIT. REFER TO THE PIPE SCHEDULE FOR ACCEPTABLE MATERIALS. UPC TABLE 6-5; EACH UNIT HAS 26.5 WATER SUPPLY FIXTURE UNITS (WSFU), OR LESS. REFER TO THE PLUMBING RISER DIAGRAMS FOR EACH UNIT FOR ADDITIONAL INFORMATION.
 - GAS SERVICE: PROVIDE COORDINATE NEW NATURAL GAS SERVICE WITH TEXAS GAS. LINDA BARGAR. 512-465-1134. ROUTE GAS LINES IN YARD OUTSIDE BUILDING TO FRONT OF EACH UNIT. GAS LINE NOT TO PASS UNDER SLAB OF ANOTHER UNIT. UPC 12-8; EACH UNIT HAS 228CFH OR 206CFH OF GAS DEMAND. 100'-0" TOTAL DEVELOPED LENGTH. REFER TO THE PLUMBING RISER DIAGRAMS FOR EACH UNIT FOR ADDITIONAL INFORMATION.
 - FIRE SERVICE: PROVIDE AND INSTALL 4" F FIRE WATER LINE SERVICE TO THE FIRE SPRINKLER CLOSET. CIVIL DRAWINGS TO PROVIDE A DOUBLE CHECK DETECTOR ASSEMBLY BACKFLOW PREVENTER IN VAULT AT PROPERTY LINE. SPRINKLER SYSTEM WILL BE DESIGN/BUILD BY FIRE SPRINKLER CONTRACTOR.
 - PROVIDE CONDENSING GAS WATER HEATER DIRECT VENT FLUE (CPVC) AND 4" FRESH AIR DUCT. INSTALL PER MANUFACTURER INSTALLATION SPECIFICATIONS. PROVIDE WALL CAP FLUE AND FRESH AIR WITH 12" SEPARATION PER CODE.
- ### GENERAL NOTES

 - REFER TO SHEET P1.0 FOR NOTES, SYMBOLS AND ABBREVIATIONS, UNLESS OTHERWISE INDICATED ON THIS DRAWING.
 - EQUIPMENT SUBMITTALS ARE REQUIRED FOR PLUMBING FIXTURES, PLUMBING ACCESSORIES, ANY MATERIALS SUBSTITUTIONS (PIPE, ETC.), AND WATER HEATER.
 - PLUMBING CONTRACTOR RESPONSIBLE TO COORDINATE EXACT FIELD ROUTING OF ALL PIPING WITH OTHER TRADES AND BLDG STRUCTURE

- WC-1 WATER CLOSET: PROVIDE AND INSTALL 3/4"CW, 3"W, 2"V. BRANCH TO CONNECTION AT WATER CLOSET. REFER TO PLUMBING RISER DIAGRAM AND PLUMBING FIXTURE SCHEDULE FOR ADDITIONAL INFORMATION.

LAV-1 LAVATORY: PROVIDE AND INSTALL 1/2"CW, 1/2"HW, 2"W, 1-1/2"V. BRANCH TO CONNECTION AT LAVATORY. REFER TO PLUMBING RISER DIAGRAM AND PLUMBING FIXTURE SCHEDULE FOR ADDITIONAL INFORMATION.

S-1 SHOWER: PROVIDE AND INSTALL 1/2"CW, 1/2"HW, 2"W, 1-1/2"V. BRANCH TO CONNECTION AT SHOWER. REFER TO PLUMBING RISER DIAGRAM AND PLUMBING FIXTURE SCHEDULE FOR ADDITIONAL INFORMATION.

T-1 TUB: PROVIDE AND INSTALL 1/2"CW, 1/2"HW, 2"W, 1-1/2"V. BRANCH TO CONNECTION AT TUB. REFER TO PLUMBING RISER DIAGRAM AND PLUMBING FIXTURE SCHEDULE FOR ADDITIONAL INFORMATION.

SK-1 SINK: PROVIDE AND INSTALL 1/2"CW, 1/2"HW, 2"W, 1-1/2"V. BRANCH TO CONNECTION AT KITCHEN SINK WITH FOOD WASTE DISPOSER AND DISHWASHER. REFER TO PLUMBING RISER DIAGRAM AND PLUMBING FIXTURE SCHEDULE FOR ADDITIONAL INFORMATION.

DW-1 DW-1

R-1 RANGE: PROVIDE AND INSTALL 3/4"G. BRANCH TO CONNECTION AT RANGE. REFER TO PLUMBING DETAILS FOR ADDITIONAL INFORMATION. PROVIDE SHUT-OFF VALVE IN ACCESSIBLE LOCATION PER CODE.

REF-1 REFRIGERATOR: PROVIDE AND INSTALL 1/2"CW. BRANCH TO CONNECTION AT REFRIGERATOR WATER OUTLET BOX. REFER TO PLUMBING RISER DIAGRAM AND PLUMBING FIXTURE SCHEDULE FOR ADDITIONAL INFORMATION.

FS-1 FLOOR SINK: PROVIDE AND INSTALL 4"W, 2"V, 1/2" TRAP

TP-1 PRIMER TUBE. BRANCH TO CONNECTION AT FLOOR SINK. REFER TO PLUMBING RISER DIAGRAM AND PLUMBING FIXTURE SCHEDULE FOR ADDITIONAL INFORMATION.

WH-1 WATER HEATER: PROVIDE AND INSTALL 3/4"CW, 3/4"HW, 3/4"G. BRANCH TO CONNECTION AT WATER HEATER. ROUTE TPR RELIEF LINE TO EXTERIOR AND ELBOW DOWN 0'-6" AFF. REFER TO PLUMBING DETAILS AND WATER HEATER SCHEDULE FOR ADDITIONAL INFORMATION. FULL SIZE DRAIN PAN WITH 3/4"CPVC TO EXTERIOR WALL WITH 90° ELBOW

WH-2

HB-1 HOSE BIBB: PROVIDE AND INSTALL 1/2"CW. BRANCH TO CONNECTION AT HOSE BIBB. REFER TO PLUMBING RISER DIAGRAM AND PLUMBING FIXTURE SCHEDULE FOR ADDITIONAL INFORMATION. PROVIDE THE FOLLOWING:
(1) HOSE BIBB AT EACH GARAGE
(2) HOSE BIBBS AT FRONT OF BUILDING
(3) HOSE BIBBS ON EACH SIDE OF BUILDING
(1) HOSE BIBB AT COURTYARD

D-1 NATURAL GAS DRYER. PROVIDE SHUT-OFF VALVE PER CODE. PROVIDE WALL BOX

W-1 WASHING MACHINE PROVIDE WALL BOX.

FU-M FURNACE UNIT: PROVIDE AND INSTALL 3/4"G. BRANCH TO CONNECTION AT FURNACE UNIT. REFER TO PLUMBING DETAILS AND FURNACE UNIT SCHEDULE FOR ADDITIONAL INFORMATION.

FU-R

2

UTILITY SERVICE

SCALE: N.T.S.

REJECTED

REVISIONS REQUIRED

BY: DATE:

REF: 1/P2.0 REF: 1/P2.0 REF: 1/P2.0

IRRIGATION SERVICE METER

2 REFER TO CIVIL DWGS FOR CW METER AND SHUT OFF VALVE LOCATION AND CONNECTION OF WATER SERVICE

BRADEN ★ STOVALL
ENGINEERING GROUP

6801 Vaught Ranch Road, Suite 202
Austin, Texas 78730

t: 512.355.7500 f: 512.474.7782
© Braden Stovall Engineering Group, LLC

NO:	DATE:	ISSUE:	MARK:
	05-02-12	PERMIT ISSUE SET	

**THE PECOS SIXPLEX
MUELLER HOUSE**
STANDARD PACIFIC HOMES
LOT #16

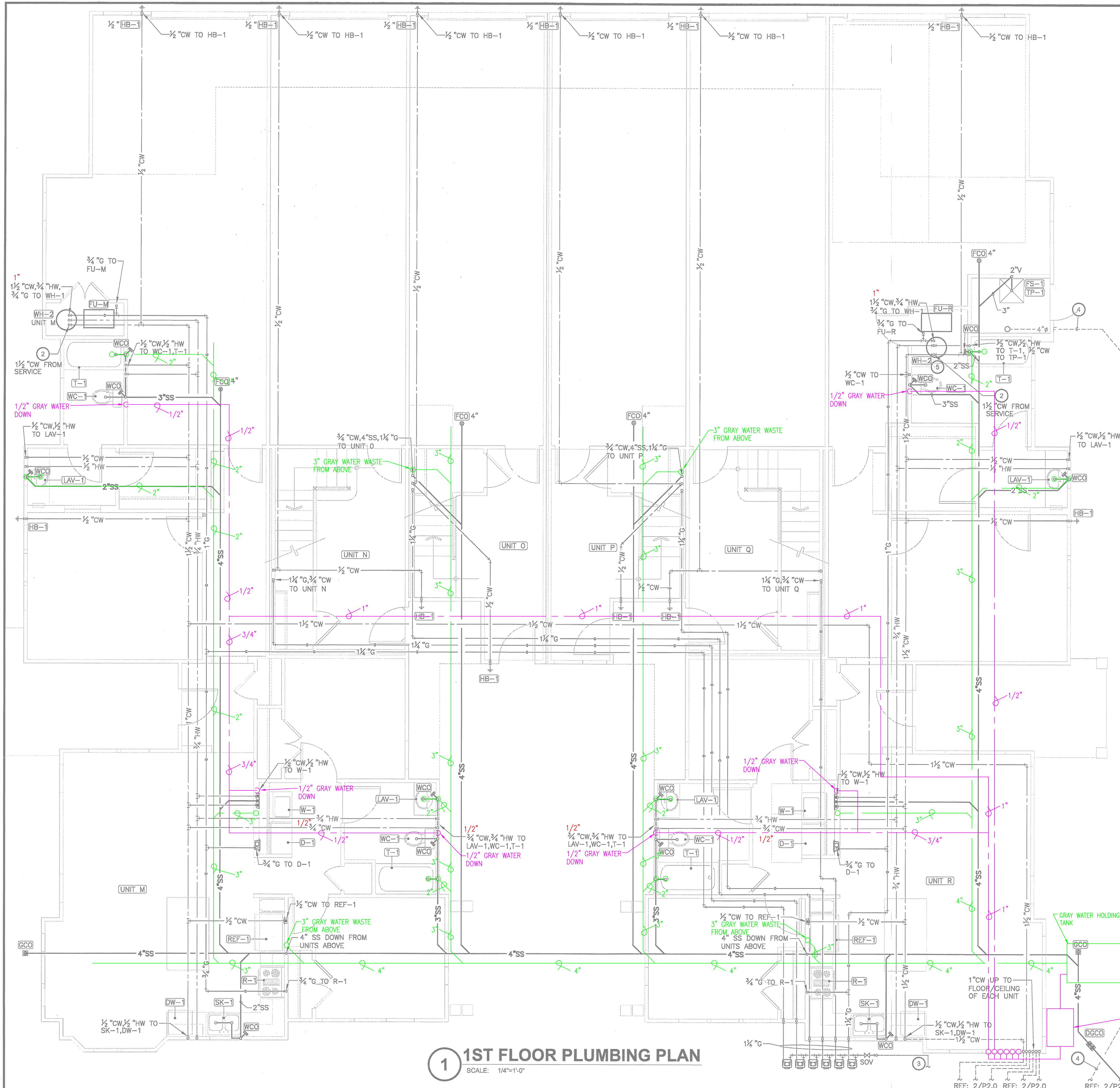
4400 BERKMAN DRIVE
AUSTIN, TEXAS 78723

project #: 1208.03 date: 05-02-12

sheet title: PLUMBING - 1ST FLOOR

sheet #: P2.0

Ben J. Stovall
REGISTERED PROFESSIONAL ENGINEER
No. 92700
Exp. 05/02/12
Braden | Stovall Engineering Group
t: 512.823.7789
Fax # 7742



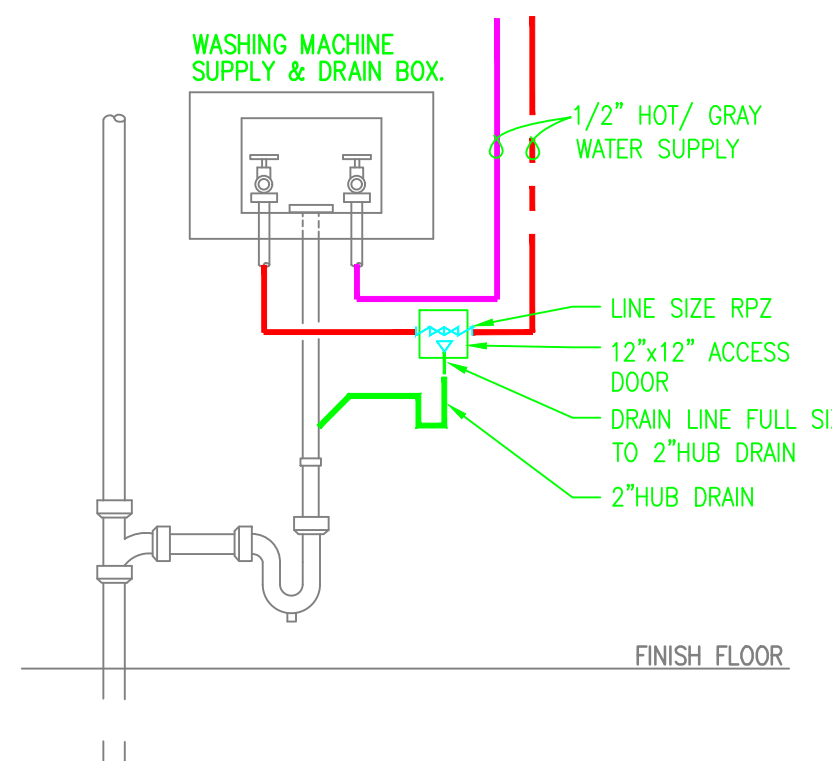
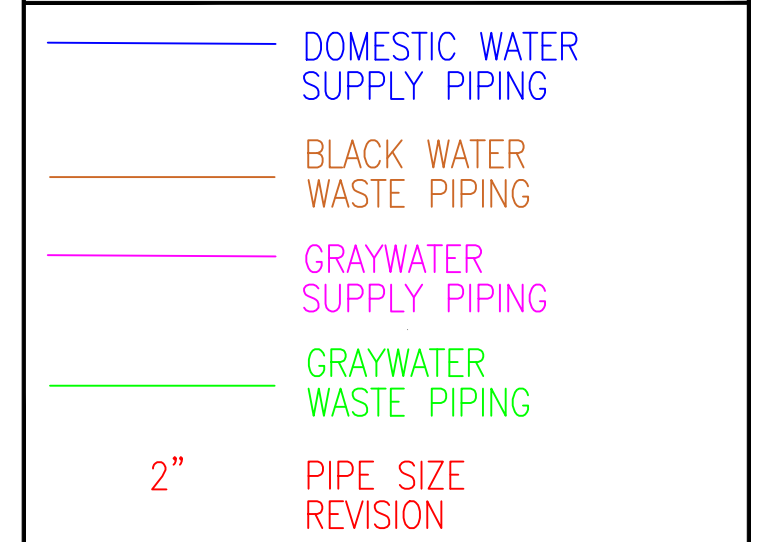
KEYED NOTES

- BUILDING DRAIN: PROVIDE 4" W BUILDING DRAIN. REFER TO THE PIPE SCHEDULE FOR ACCEPTABLE MATERIALS. UPC 7-3: BUILDING HAS 120 DRAINAGE FIXTURE UNITS (DFU). EACH UNIT HAS 20 DFU'S. REFER TO THE PLUMBING RISER DIAGRAMS FOR EACH UNIT FOR ADDITIONAL INFORMATION.
 - DOMESTIC WATER: PROVIDE 1 1/2" CW DOMESTIC WATER FROM THE WATER SERVICE TO A SHUTOFF VALVE IN THE WATER HEATER CLOSET AT EACH UNIT. REFER TO THE PIPE SCHEDULE FOR ACCEPTABLE MATERIALS. UPC TABLE 6-5: EACH UNIT HAS 26.5 WATER SUPPLY FIXTURE UNITS (WSFU), OR LESS. REFER TO THE PLUMBING RISER DIAGRAMS FOR EACH UNIT FOR ADDITIONAL INFORMATION.
 - GAS SERVICE: PROVIDE COORDINATE NEW NATURAL GAS SERVICE WITH TEXAS GAS. LINDA BARGAR. 512-465-1134. ROUTE GAS LINES IN YARD OUTSIDE BUILDING TO FRONT OF EACH UNIT. GAS LINE NOT TO PASS UNDER SLAB OF ANOTHER UNIT. UPC 12-8: EACH UNIT HAS 228CFH OR 206CFH OF GAS DEMAND. 100'-0" TOTAL DEVELOPED LENGTH. REFER TO THE PLUMBING RISER DIAGRAMS FOR EACH UNIT FOR ADDITIONAL INFORMATION.
 - FIRE SERVICE: PROVIDE AND INSTALL 4" F FIRE WATER LINE SERVICE TO THE FIRE SPRINKLER CLOSET. CIVIL DRAWINGS TO PROVIDE A DOUBLE CHECK DETECTOR ASSEMBLY BACKFLOW PREVENTER IN VAULT AT PROPERTY LINE. SPRINKLER SYSTEM WILL BE DESIGN/BUILD BY FIRE SPRINKLER CONTRACTOR.
 - PROVIDE CONDENSING GAS WATER HEATER DIRECT VENT FLUE (CPVC) AND 4" FRESH AIR DUCT. INSTALL PER MANUFACTURER INSTALLATION SPECIFICATIONS. PROVIDE WALL CAP FLUE AND FRESH AIR WITH 12" SEPARATION PER CODE.
- WC-1 WATER CLOSET: PROVIDE AND INSTALL 3/4" CW, 3" W, 2" V. BRANCH TO CONNECTION AT WATER CLOSET. REFER TO PLUMBING RISER DIAGRAM AND PLUMBING FIXTURE SCHEDULE FOR ADDITIONAL INFORMATION.
- LAV-1 LAVATORY: PROVIDE AND INSTALL 1/2" CW, 1/2" HW, 2" W, 1-1/2" V. BRANCH TO CONNECTION AT LAVATORY. REFER TO PLUMBING RISER DIAGRAM AND PLUMBING FIXTURE SCHEDULE FOR ADDITIONAL INFORMATION.
- S-1 SHOWER: PROVIDE AND INSTALL 1/2" CW, 1/2" HW, 2" W, 1-1/2" V. BRANCH TO CONNECTION AT SHOWER. REFER TO PLUMBING RISER DIAGRAM AND PLUMBING FIXTURE SCHEDULE FOR ADDITIONAL INFORMATION.
- T-1 TUB: PROVIDE AND INSTALL 1/2" CW, 1/2" HW, 2" W, 1-1/2" V. BRANCH TO CONNECTION AT TUB. REFER TO PLUMBING RISER DIAGRAM AND PLUMBING FIXTURE SCHEDULE FOR ADDITIONAL INFORMATION.
- SK-1 SINK: PROVIDE AND INSTALL 1/2" CW, 1/2" HW, 2" W, 1-1/2" V. BRANCH TO CONNECTION AT KITCHEN SINK WITH FOOD WASTE DISPOSER AND DISHWASHER. REFER TO PLUMBING RISER DIAGRAM AND PLUMBING FIXTURE SCHEDULE FOR ADDITIONAL INFORMATION.
- DW-1 DW-1
- R-1 RANGE: PROVIDE AND INSTALL 3/4" G. BRANCH TO CONNECTION AT RANGE. REFER TO PLUMBING RISER DETAILS FOR ADDITIONAL INFORMATION. PROVIDE SHUT-OFF VALVE IN ACCESSIBLE LOCATION PER CODE.
- REF-1 REFRIGERATOR: PROVIDE AND INSTALL 1/2" CW. BRANCH TO CONNECTION AT REFRIGERATOR WATER OUTLET BOX. REFER TO PLUMBING RISER DIAGRAM AND PLUMBING FIXTURE SCHEDULE FOR ADDITIONAL INFORMATION.
- FS-1 FLOOR SINK: PROVIDE AND INSTALL 4" W, 2" V, 1/2" TRAP
- TP-1 PRIMER TUBE. BRANCH TO CONNECTION AT FLOOR SINK. REFER TO PLUMBING RISER DIAGRAM AND PLUMBING FIXTURE SCHEDULE FOR ADDITIONAL INFORMATION.
- WH-1 WATER HEATER: PROVIDE AND INSTALL 3/4" CW, 3/4" HW, 3/4" G. BRANCH TO CONNECTION AT WATER HEATER. ROUTE TPR RELIEF LINE TO EXTERIOR AND ELBOW DOWN 0'-6" AFF. REFER TO PLUMBING DETAILS AND WATER HEATER SCHEDULE FOR ADDITIONAL INFORMATION. FULL SIZE DRAIN PAN WITH 3/4" CPVC TO EXTERIOR WALL WITH 90° ELBOW
- WH-2
- HB-1 HOSE BIBB: PROVIDE AND INSTALL 1/2" CW. BRANCH TO CONNECTION AT HOSE BIBB. REFER TO PLUMBING RISER DIAGRAM AND PLUMBING FIXTURE SCHEDULE FOR ADDITIONAL INFORMATION. PROVIDE THE FOLLOWING:
(1) HOSE BIBB AT EACH GARAGE
(2) HOSE BIBBS AT FRONT OF BUILDING
(3) HOSE BIBBS ON EACH SIDE OF BUILDING
(1) HOSE BIBB AT COURTYARD
- D-1 NATURAL GAS DRYER. PROVIDE SHUT-OFF VALVE PER CODE. PROVIDE WALL BOX
- W-1 WASHING MACHINE PROVIDE WALL BOX.
- FU-M FURNACE UNIT: PROVIDE AND INSTALL 3/4" G. BRANCH TO CONNECTION AT FURNACE UNIT. REFER TO PLUMBING DETAILS AND FURNACE UNIT SCHEDULE FOR ADDITIONAL INFORMATION.
- FU-R

GENERAL NOTES

- REFER TO SHEET P1.0 FOR NOTES, SYMBOLS AND ABBREVIATIONS, UNLESS OTHERWISE INDICATED ON THIS DRAWING.
- EQUIPMENT SUBMITTALS ARE REQUIRED FOR PLUMBING FIXTURES, PLUMBING ACCESSORIES, ANY MATERIALS SUBSTITUTIONS (PIPE, ETC.), AND WATER HEATER.
- PLUMBING CONTRACTOR RESPONSIBLE TO COORDINATE EXACT FIELD ROUTING OF ALL PIPING WITH OTHER TRADES AND BLDG STRUCTURE

PLUMBING LEGEND



RPZ/HUB DRAIN @ WASHER BOX
SCALE: NOT TO SCALE

BRADEN ★ STOVALL ENGINEERING GROUP

6801 Vaught Ranch Road, Suite 202 Austin, Texas 78730 t: 512.355.7500 f: 512.474.7782 © Braden Stovall Engineering Group, LLC

NO:	DATE:	ISSUE:	MARK:
	05-02-12	PERMIT ISSUE SET	

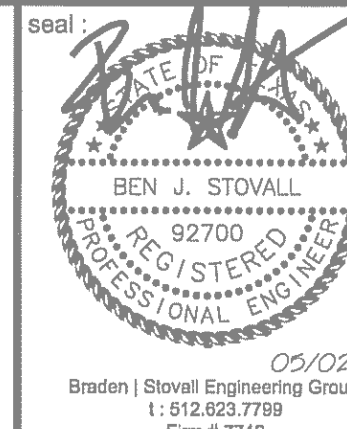
THE PECOS SIXPLEX
MUELLER HOUSE
STANDARD PACIFIC HOMES
LOT #16

4400 BERKMAN DRIVE
AUSTIN, TEXAS 78723

project #: 1208.03 date: 05-02-12

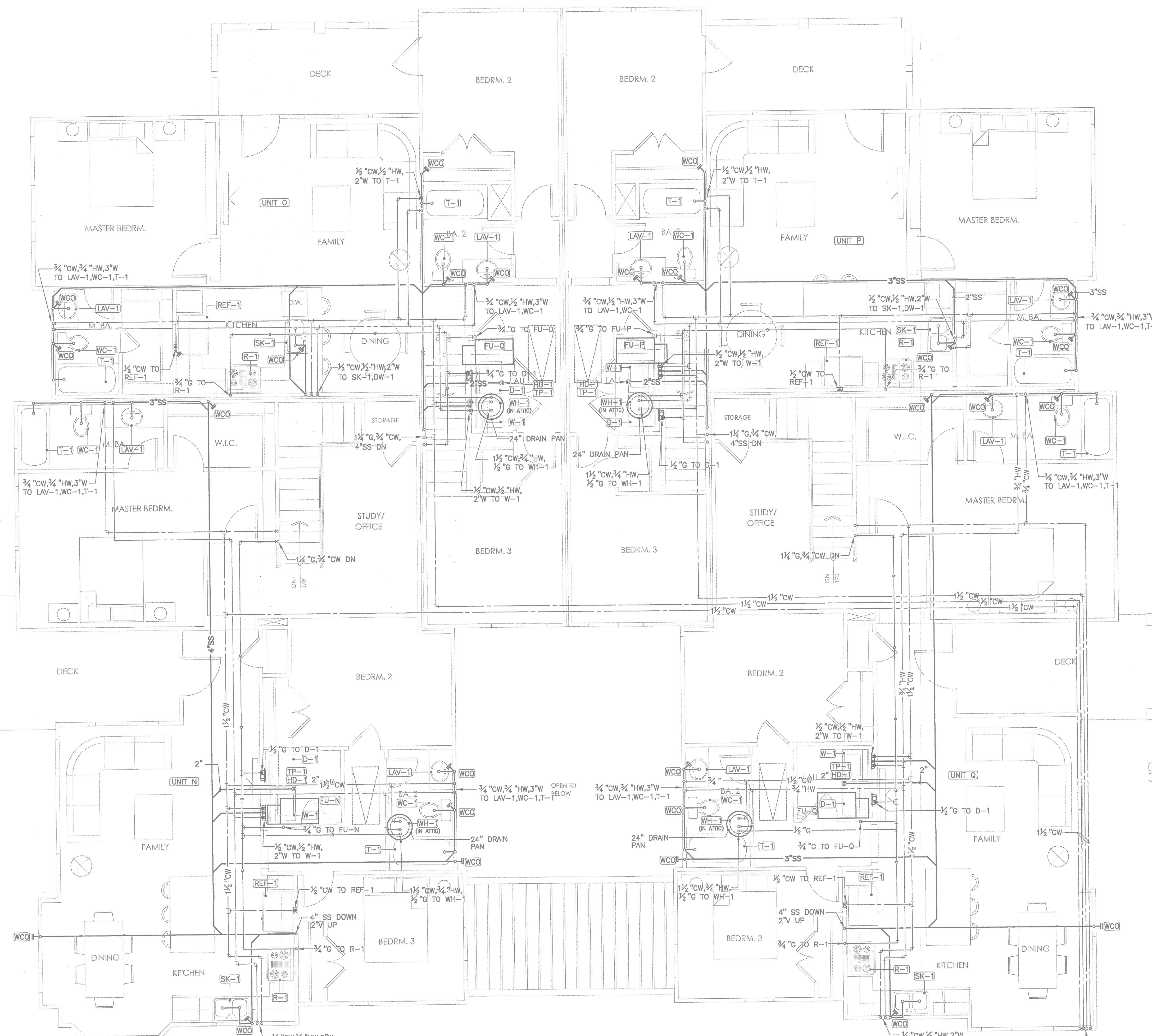
sheet title: PLUMBING - 1ST FLOOR

sheet #: P2.0



2 UTILITY SERVICE
SCALE: N.T.S.
ELECTRICAL: PROVIDE 60 AMP 120V, 15AMP BREAKER WITH 60 OF (2) #12 AND (1) #12 GND IN 1/2\"/>

REVISIONS REQUIRED
DATE:



KEYED NOTES

- 1. BUILDING DRAIN: PROVIDE 4"W BUILDING DRAIN. REFER TO THE PIPE SCHEDULE FOR ACCEPTABLE MATERIALS. UPC 7-3; BUILDING HAS 120 DRAINAGE FIXTURE UNITS (DFU). EACH UNIT HAS 20 DFU'S. REFER TO THE PLUMBING RISER DIAGRAMS FOR EACH UNIT FOR ADDITIONAL INFORMATION.
- 2. DOMESTIC WATER: PROVIDE 1 1/2"CW DOMESTIC WATER FROM THE WATER SERVICE TO A SHUTOFF VALVE IN THE WATER HEATER CLOSET AT EACH UNIT. REFER TO THE PIPE SCHEDULE FOR ACCEPTABLE MATERIALS. UPC TABLE 6-5; EACH UNIT HAS 26.5 WATER SUPPLY FIXTURE UNITS (WSFU), OR LESS. REFER TO THE PLUMBING RISER DIAGRAMS FOR EACH UNIT FOR ADDITIONAL INFORMATION.
- 3. GAS SERVICE: PROVIDE COORDINATE NEW NATURAL GAS SERVICE WITH TEXAS GAS, LINDA BARGAR, 512-465-1134. ROUTE GAS LINES IN YARD OUTSIDE BUILDING TO FRONT OF EACH UNIT. GAS LINE NOT TO PASS UNDER SLAB OF ANOTHER UNIT. UPC 12-8; EACH UNIT HAS 228CFH OR 206CFH OF GAS DEMAND, 100'-0" TOTAL DEVELOPED LENGTH. REFER TO THE PLUMBING RISER DIAGRAMS FOR EACH UNIT FOR ADDITIONAL INFORMATION.
- 4. FIRE SERVICE: PROVIDE AND INSTALL 4" F FIRE WATER LINE SERVICE TO THE FIRE SPRINKLER CLOSET. CIVIL DRAWINGS TO PROVIDE A DOUBLE CHECK DETECTOR ASSEMBLY BACKFLOW PREVENTER IN VAULT AT PROPERTY LINE. SPRINKLER SYSTEM WILL BE DESIGN/BUILD BY FIRE SPRINKLER CONTRACTOR.
- 5. PROVIDE CONDENSING GAS WATER HEATER DIRECT VENT FLUE (OPVC) AND 4" FRESH AIR DUCT. INSTALL PER MANUFACTURER INSTALLATION SPECIFICATIONS. PROVIDE WALL CAP FLUE AND FRESH AIR WITH 12" SEPARATION PER CODE.
- WC-1 WATER CLOSET: PROVIDE AND INSTALL 3/4"CW, 3"W, 2"V. BRANCH TO CONNECTION AT WATER CLOSET. REFER TO PLUMBING RISER DIAGRAM AND PLUMBING FIXTURE SCHEDULE FOR ADDITIONAL INFORMATION.
- LAV-1 LAVATORY: PROVIDE AND INSTALL 1/2"CW, 1/2"HW, 2"W, 1-1/2"V. BRANCH TO CONNECTION AT LAVATORY. REFER TO PLUMBING RISER DIAGRAM AND PLUMBING FIXTURE SCHEDULE FOR ADDITIONAL INFORMATION.
- S-1 SHOWER: PROVIDE AND INSTALL 1/2"CW, 1/2"HW, 2"W, 1-1/2"V. BRANCH TO CONNECTION AT SHOWER. REFER TO PLUMBING RISER DIAGRAM AND PLUMBING FIXTURE SCHEDULE FOR ADDITIONAL INFORMATION.
- T-1 TUB: PROVIDE AND INSTALL 1/2"CW, 1/2"HW, 2"W, 1-1/2"V. BRANCH TO CONNECTION AT TUB. REFER TO PLUMBING RISER DIAGRAM AND PLUMBING FIXTURE SCHEDULE FOR ADDITIONAL INFORMATION.
- SK-1 SINK: PROVIDE AND INSTALL 1/2"CW, 1/2"HW, 2"W, 1-1/2"V. BRANCH TO CONNECTION AT KITCHEN SINK WITH FOOD WASTE DISPOSER AND DISHWASHER. REFER TO PLUMBING RISER DIAGRAM AND PLUMBING FIXTURE SCHEDULE FOR ADDITIONAL INFORMATION.
- R-1 RANGE: PROVIDE AND INSTALL 3/4"G. BRANCH TO CONNECTION AT RANGE. REFER TO PLUMBING DETAILS FOR ADDITIONAL INFORMATION. PROVIDE SHUT-OFF VALVE IN ACCESSIBLE LOCATION PER CODE.
- REF-1 REFRIGERATOR: PROVIDE AND INSTALL 1/2"CW. BRANCH TO CONNECTION AT REFRIGERATOR WATER OUTLET BOX. REFER TO PLUMBING RISER DIAGRAM AND PLUMBING FIXTURE SCHEDULE FOR ADDITIONAL INFORMATION.
- FS-1 FLOOR SINK: PROVIDE AND INSTALL 4"W, 2"V, 1/2" TRAP
- TP-1 PRIMER TUBE. BRANCH TO CONNECTION AT FLOOR SINK. REFER TO PLUMBING RISER DIAGRAM AND PLUMBING FIXTURE SCHEDULE FOR ADDITIONAL INFORMATION.
- WH-1 WATER HEATER: PROVIDE AND INSTALL 3/4"CW, 3/4"HW, 3/4"G. BRANCH TO CONNECTION AT WATER HEATER. ROUTE TPR RELIEF LINE TO EXTERIOR AND ELBOW DOWN 0'-6" AFF. REFER TO PLUMBING DETAILS AND WATER HEATER SCHEDULE FOR ADDITIONAL INFORMATION. FULL SIZE DRAIN PAN WITH 3/4"CPVC TO EXTERIOR WALL WITH 90° ELBOW
- D-1 NATURAL GAS DRYER. PROVIDE SHUT-OFF VALVE PER CODE. PROVIDE WALL BOX
- W-1 WASHING MACHINE PROVIDE WALL BOX.
- FU-N FURNACE UNIT: PROVIDE AND INSTALL 3/4"G. BRANCH TO CONNECTION AT FURNACE UNIT. REFER TO PLUMBING DETAILS AND FURNACE UNIT SCHEDULE FOR ADDITIONAL INFORMATION.

PLANNING & DEVELOPMENT
CITY OF AUSTIN
REJECTED
REVISIONS REQUIRED
BY: _____ DATE: _____

GENERAL NOTES

- 1. REFER TO SHEET P1.0 FOR NOTES, SYMBOLS AND ABBREVIATIONS, UNLESS OTHERWISE INDICATED ON THIS DRAWING.
- 2. EQUIPMENT SUBMITTALS ARE REQUIRED FOR PLUMBING FIXTURES, PLUMBING ACCESSORIES, ANY MATERIALS SUBSTITUTIONS (PIPE, ETC.), AND WATER HEATER.
- 3. PLUMBING CONTRACTOR RESPONSIBLE TO COORDINATE EXACT FIELD ROUTING OF ALL PIPING WITH OTHER TRADES AND BLDG STRUCTURE

BRADEN ★ STOVALL
ENGINEERING GROUP

8601 Vaught Ranch Road, Suite 202
Austin, Texas 78730

1: 512.355.7500 f: 512.474.7782
© Braden Stovall Engineering Group, LLC

NO:	DATE:	ISSUE:	MARK:
	05-02-12	PERMIT ISSUE SET	

**THE PECOS SIXPLEX
MUELLER HOUSE**
STANDARD PACIFIC HOMES
LOT #16

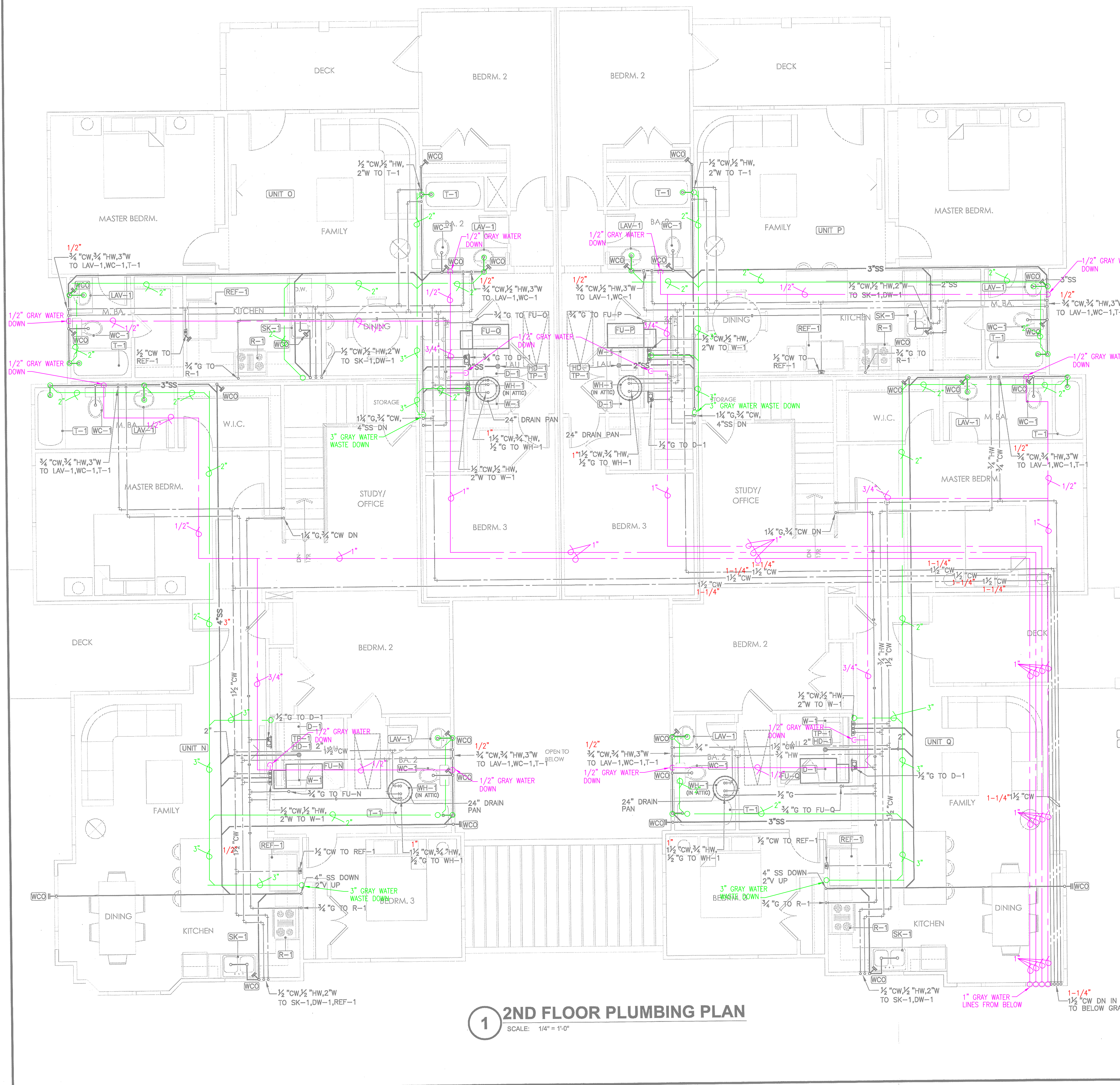
4400 BERKMAN DRIVE
AUSTIN, TEXAS 78723

project #: 1208.03 date: 05-02-12

sheet title: **PLUMBING - 2ND FLOOR**

sheet #: **P2.1**

1 2ND FLOOR PLUMBING PLAN
SCALE: 1/4" = 1'-0"



KEYED NOTES

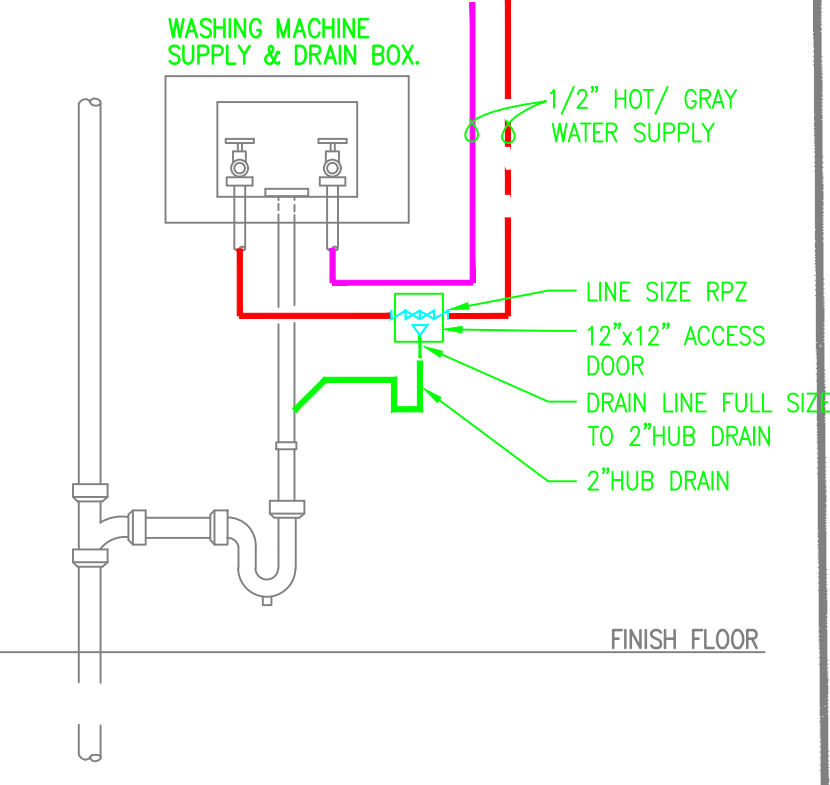
- 1. BUILDING DRAIN: PROVIDE 4" W BUILDING DRAIN. REFER TO THE PIPE SCHEDULE FOR ACCEPTABLE MATERIALS. UPC 7-3; BUILDING HAS 120 DRAINAGE FIXTURE UNITS (DFU). EACH UNIT HAS 20 DFU'S. REFER TO THE PLUMBING RISER DIAGRAMS FOR EACH UNIT FOR ADDITIONAL INFORMATION.
- 2. DOMESTIC WATER: PROVIDE 1 1/2" CW DOMESTIC WATER FROM THE WATER SERVICE TO A SHUTOFF VALVE IN THE WATER HEATER CLOSET AT EACH UNIT. REFER TO THE PIPE SCHEDULE FOR ACCEPTABLE MATERIALS. UPC TABLE 6-5; EACH UNIT HAS 26.5 WATER SUPPLY FIXTURE UNITS (WSFU), OR LESS. REFER TO THE PLUMBING RISER DIAGRAMS FOR EACH UNIT FOR ADDITIONAL INFORMATION.
- 3. GAS SERVICE: PROVIDE COORDINATE NEW NATURAL GAS SERVICE WITH TEXAS GAS. LINDA BARGAR. 512-465-1134. ROUTE GAS LINES IN YARD OUTSIDE BUILDING TO FRONT OF EACH UNIT. GAS LINE NOT TO PASS UNDER SLAB OF ANOTHER UNIT. UPC 12-8; EACH UNIT HAS 228CFH OR 206CFH OF GAS DEMAND. 100'-0" TOTAL DEVELOPED LENGTH. REFER TO THE PLUMBING RISER DIAGRAMS FOR EACH UNIT FOR ADDITIONAL INFORMATION.
- 4. FIRE SERVICE: PROVIDE AND INSTALL 4" F FIRE WATER LINE SERVICE TO THE FIRE SPRINKLER CLOSET. CIVIL DRAWINGS TO PROVIDE A DOUBLE CHECK DETECTOR ASSEMBLY BACKFLOW PREVENTER IN VAULT AT PROPERTY LINE. SPRINKLER SYSTEM WILL BE DESIGN/BUILD BY FIRE SPRINKLER CONTRACTOR.
- 5. PROVIDE CONDENSING GAS WATER HEATER DIRECT VENT FLUE (DPVC) AND 4" FRESH AIR DUCT. INSTALL PER MANUFACTURER INSTALLATION SPECIFICATIONS. PROVIDE WALL CAP FLUE AND FRESH AIR WITH 12" SEPARATION PER CODE.
- WC-1 WATER CLOSET: PROVIDE AND INSTALL 3/4" CW, 3" W, 2" V. BRANCH TO CONNECTION AT WATER CLOSET. REFER TO PLUMBING RISER DIAGRAM AND PLUMBING FIXTURE SCHEDULE FOR ADDITIONAL INFORMATION.
- LAV-1 LAVATORY: PROVIDE AND INSTALL 1/2" CW, 1/2" HW, 2" W, 1-1/2" V. BRANCH TO CONNECTION AT LAVATORY. REFER TO PLUMBING RISER DIAGRAM AND PLUMBING FIXTURE SCHEDULE FOR ADDITIONAL INFORMATION.
- S-1 SHOWER: PROVIDE AND INSTALL 1/2" CW, 1/2" HW, 2" W, 1-1/2" V. BRANCH TO CONNECTION AT SHOWER. REFER TO PLUMBING RISER DIAGRAM AND PLUMBING FIXTURE SCHEDULE FOR ADDITIONAL INFORMATION.
- T-1 TUB: PROVIDE AND INSTALL 1/2" CW, 1/2" HW, 2" W, 1-1/2" V. BRANCH TO CONNECTION AT TUB. REFER TO PLUMBING RISER DIAGRAM AND PLUMBING FIXTURE SCHEDULE FOR ADDITIONAL INFORMATION.
- SK-1 SINK: PROVIDE AND INSTALL 1/2" CW, 1/2" HW, 2" W, 1-1/2" V. BRANCH TO CONNECTION AT KITCHEN SINK WITH FOOD WASTE DISPOSER AND DISHWASHER. REFER TO PLUMBING RISER DIAGRAM AND PLUMBING FIXTURE SCHEDULE FOR ADDITIONAL INFORMATION.
- R-1 RANGE: PROVIDE AND INSTALL 3/4" G. BRANCH TO CONNECTION AT RANGE. REFER TO PLUMBING DETAILS FOR ADDITIONAL INFORMATION. PROVIDE SHUT-OFF VALVE IN ACCESSIBLE LOCATION PER CODE.
- REF-1 REFRIGERATOR: PROVIDE AND INSTALL 1/2" CW. BRANCH TO CONNECTION AT REFRIGERATOR WATER OUTLET BOX. REFER TO PLUMBING RISER DIAGRAM AND PLUMBING FIXTURE SCHEDULE FOR ADDITIONAL INFORMATION.
- FS-1 FLOOR SINK: PROVIDE AND INSTALL 4" W, 2" V, 1/2" TRAP PRIMER TUBE. BRANCH TO CONNECTION AT FLOOR SINK. REFER TO PLUMBING RISER DIAGRAM AND PLUMBING FIXTURE SCHEDULE FOR ADDITIONAL INFORMATION.
- WH-1 WATER HEATER: PROVIDE AND INSTALL 3/4" CW, 3/4" HW, 3/4" G. BRANCH TO CONNECTION AT WATER HEATER. ROUTE TPR RELIEF LINE TO EXTERIOR AND ELBOW DOWN 0'-6" AFF. REFER TO PLUMBING DETAILS AND WATER HEATER SCHEDULE FOR ADDITIONAL INFORMATION. FULL SIZE DRAIN PAN WITH 3/4" CPVC TO EXTERIOR WALL WITH 90° ELBOW
- D-1 NATURAL GAS DRYER. PROVIDE SHUT-OFF VALVE PER CODE. PROVIDE WALL BOX
- W-1 WASHING MACHINE PROVIDE WALL BOX.
- FU-N FURNACE UNIT: PROVIDE AND INSTALL 3/4" G. BRANCH TO CONNECTION AT FURNACE UNIT. REFER TO PLUMBING DETAILS AND FURNACE UNIT SCHEDULE FOR ADDITIONAL INFORMATION.

GENERAL NOTES

- 1. REFER TO SHEET P1.0 FOR NOTES, SYMBOLS AND ABBREVIATIONS, UNLESS OTHERWISE INDICATED ON THIS DRAWING.
- 2. EQUIPMENT SUBMITTALS ARE REQUIRED FOR PLUMBING FIXTURES, PLUMBING ACCESSORIES, ANY MATERIALS SUBSTITUTIONS (PIPE, ETC.), AND WATER HEATER.
- 3. PLUMBING CONTRACTOR RESPONSIBLE TO COORDINATE EXACT FIELD ROUTING OF ALL PIPING WITH OTHER TRADES AND BLDG STRUCTURE

PLUMBING LEGEND

- DOMESTIC WATER SUPPLY PIPING
- BLACK WATER WASTE PIPING
- GRAYWATER SUPPLY PIPING
- GRAYWATER WASTE PIPING
- PIPE SIZE REVISION



RPZ/HUB DRAIN @ WASHER BOX
SCALE: NOT TO SCALE

PLANNING & DEVELOPMENT
CITY OF AUSTIN
REJECTED
REVISIONS REQUIRED
BY: _____ DATE: _____

BRADEN ★ STOVALL
ENGINEERING GROUP

8601 Vaught Ranch Road, Suite 202 Austin, Texas 78730
1: 512.355.7500 f: 512.474.7782
© Braden Stovall Engineering Group, LLC

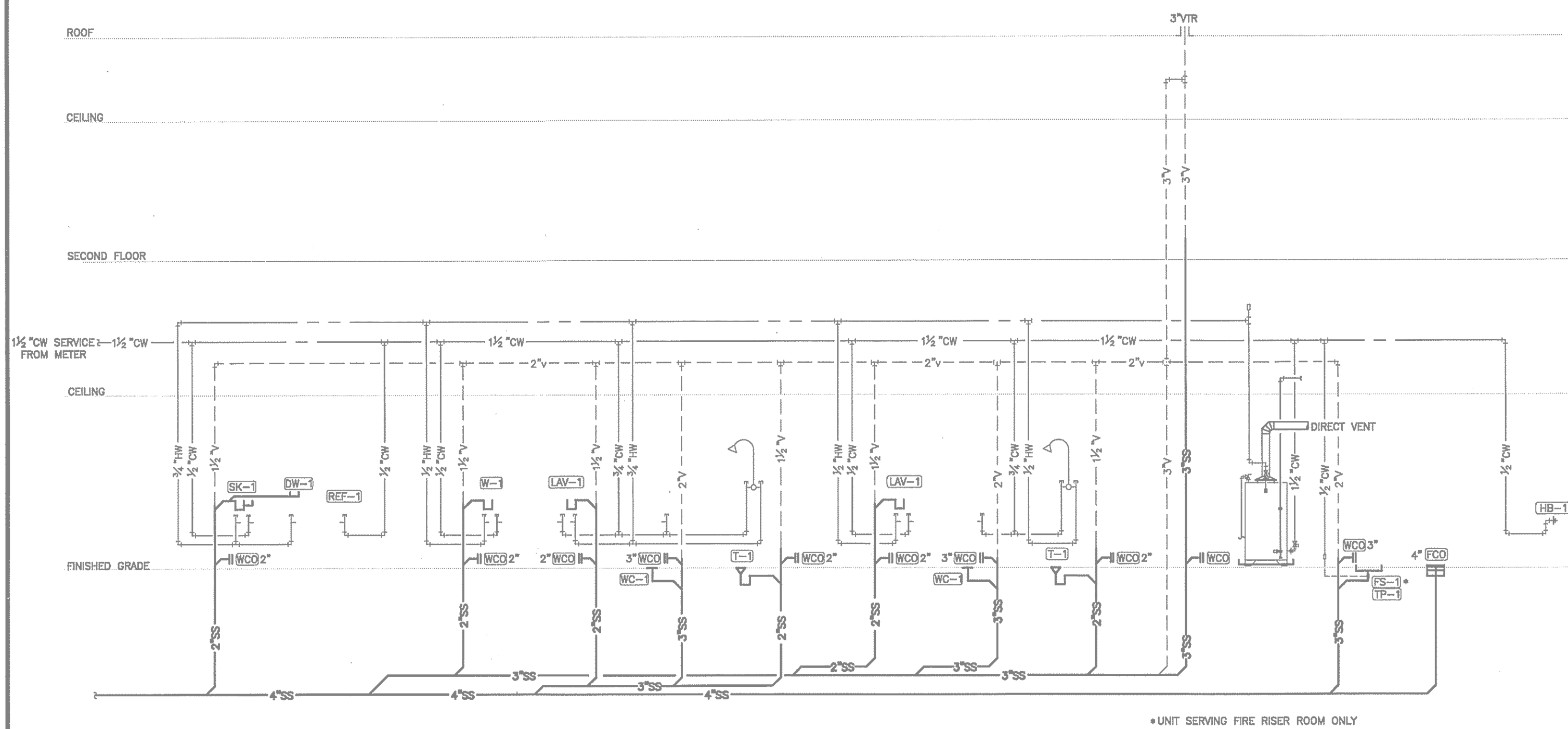
NO:	DATE:	ISSUE:	MARK:
	05-02-12	PERMIT ISSUE SET	

THE PECOS SIXPLEX MUELLER HOUSE
STANDARD PACIFIC HOMES
LOT #16

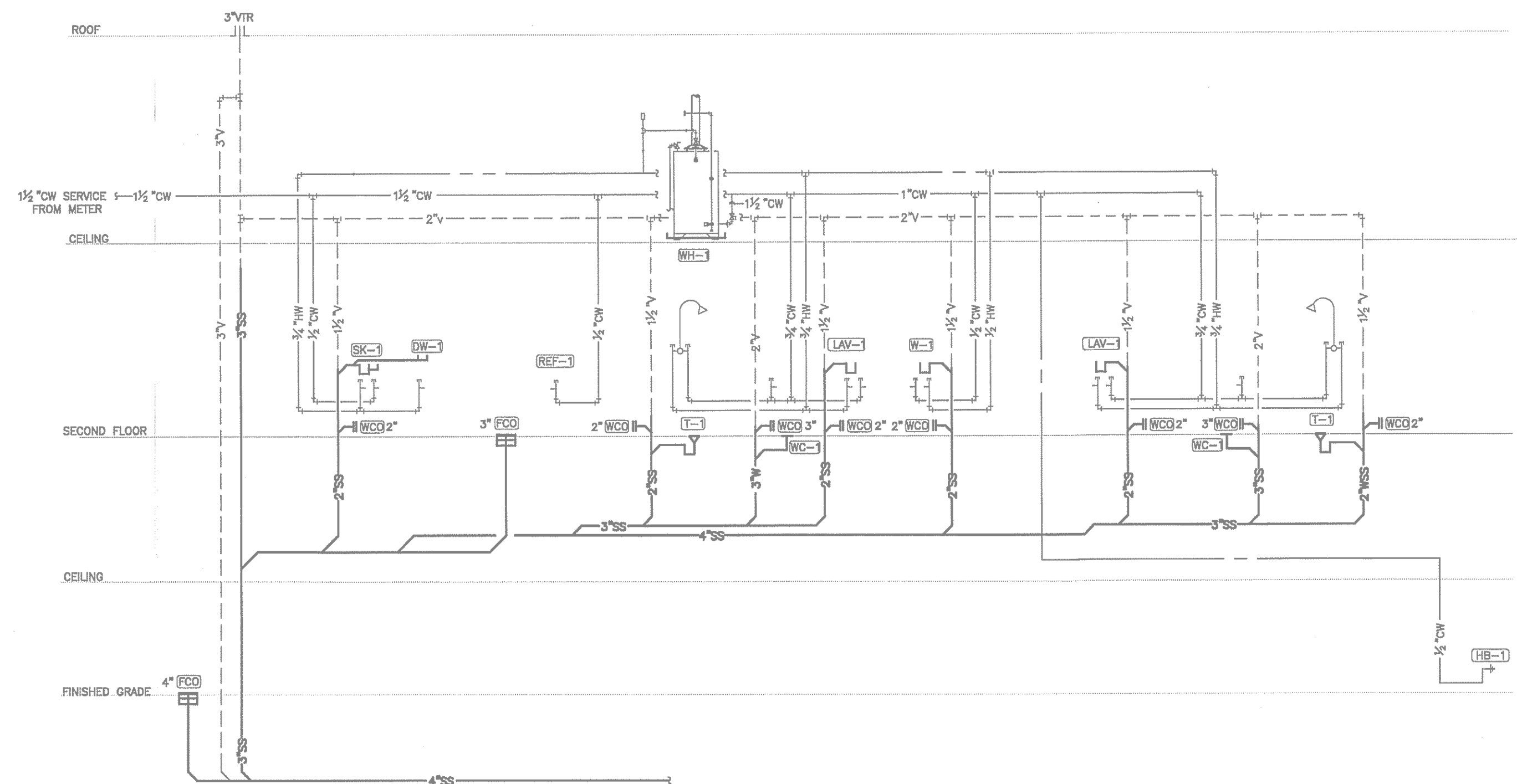
4400 BERKMAN DRIVE
AUSTIN, TEXAS 78723

project #: 1208.03 date: 05-02-12
sheet title: PLUMBING - 2ND FLOOR
sheet #: P2.1

Professional Engineer Seal: Braden J. Stovall, No. 92700, State of Texas, expires 05/02/12



1 PLUMBING - RISER DIAGRAM UNIT M,R
SCALE: NONE



2 PLUMBING - RISER DIAGRAM UNIT N,Q
SCALE: NONE

PLUMBING FIXTURE CONNECTION SCHEDULE

PLAN SYMB.	DESCRIPTION	ROUGH-IN CONNECTION						
		COLD WATER	HOT WATER	WASTE	TRAP INT.	VENT	TEMPERED WATER	STORM DRAIN
WC-1	WATER CLOSET:	1/2"	1/2"	3"	1 1/2"	2"	—	—
LAV-1, 2	LAVATORY :	1/2"	1/2"	2"	1 1/2"	1 1/2"	—	—
SK-1	2-COMPARTMENT SINK W/ DISPOSER AND DISHWASHER:	1/2"	1/2"	2"	1-1/2"	1-1/2"	—	—
S-1	BATHTUB/SHOWER:	1/2"	1/2"	2"	1-1/2"	1-1/2"	—	—
T-1	BATHTUB:	1/2"	1/2"	3"	3"	2"	—	—
REF-1	REFRIGERATOR WATER OUTLET:	3/8"	—	—	—	—	—	—
HB-1	HOSE BIBB:	1/2"	—	—	—	—	—	—
W-1	WASHING MACHINE BOX:	1/2"	1/2"	2"	1-1/2"	1-1/2"	—	—
HB-1	HOSE BIBB	1/2"	—	—	—	—	—	—
FS-1	FLOOR SINK- FIRE RISER	—	—	3"	—	2"	—	—

- NOTES:**
- CONTRACTOR TO FIELD VERIFY ELEVATIONS AND DIMENSIONS OF FINISHED FLOORS AND WALLS. TRUE ALL DRAINS, ROUGH-INS AND CARRIERS WITH PROPOSED ELEVATIONS AND SURFACES.
 - MOUNTING HEIGHT ELEVATION OF ALL WALL HUNG OR COUNTER MOUNTED FIXTURES SHALL BE COORDINATED WITH THE ARCHITECTURAL DRAWINGS PRIOR TO INSTALLATION.
 - CONTRACTOR SHALL FIELD COORDINATE EXACT REQUIREMENTS OF, MAKE PROVISIONS FOR, AND SUPPLY ALL MATERIALS AND LABOR FOR MAKING FINAL PLUMBING CONNECTIONS.
 - ALL ROUGH-INS SHALL BE PROVIDED WITH A SOLID BRASS, CHROME PLATED STOP VALVE AND ESCHTCHON PLATE.
 - SEAL ALL SPACES BETWEEN PLUMBING FIXTURES AND MOUNTING SURFACES WITH WHITE LATEX CAULK WIPED SMOOTH AND FLUSH WITH FIXTURE.
 - FINAL FIXTURE SELECTIONS ARE TO BE APPROVED BY D.R. HORTON.

WATER HEATER SCHEDULE

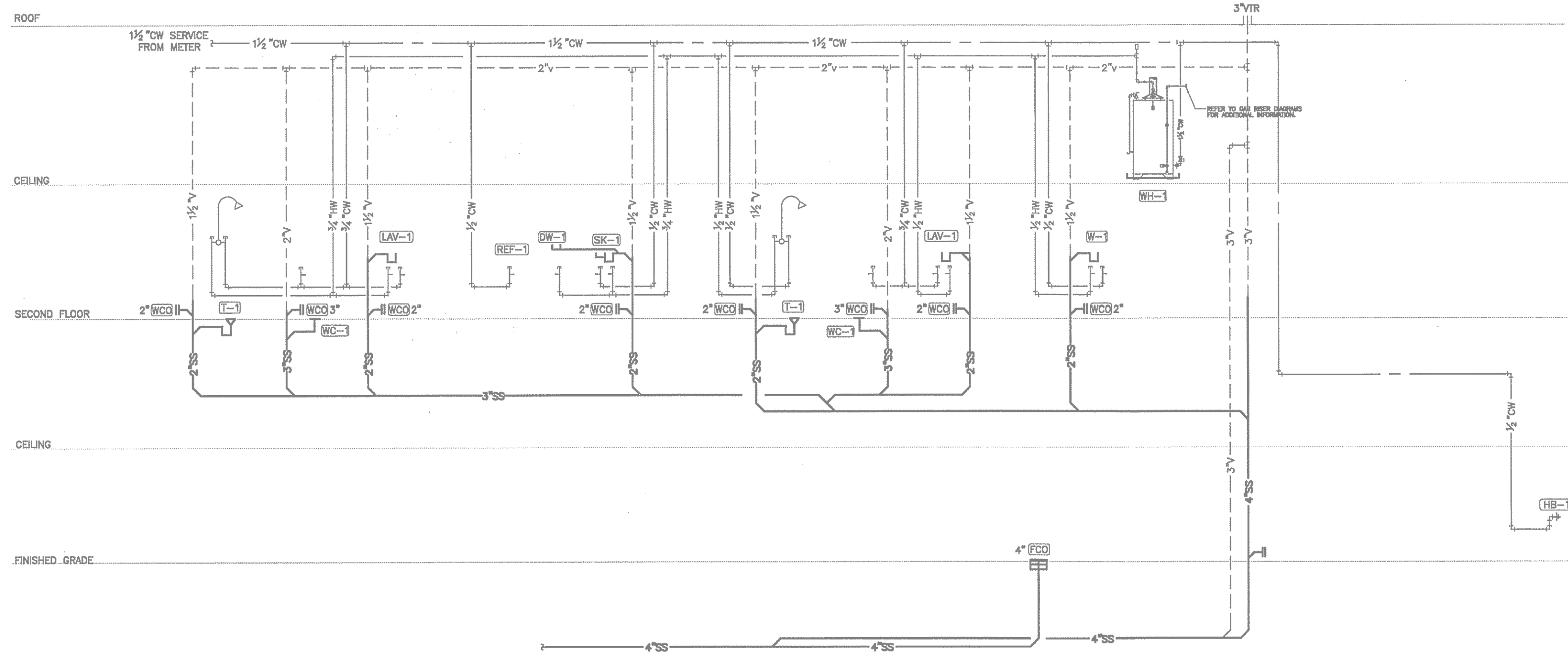
MARK	WH-1	WH-2
MANUFACTURER	A.O. SMITH "PRO-MAX" GCV 40	A.O. SMITH "PRO-MAX" GCV 40
FUEL TYPE	NATURAL GAS	NATURAL GAS
DRAFT HOOD SIZE - IN	4	COAXIAL
VENT TYPE	TYPE B	DIRECT VENT
STORAGE CAPACITY - GALLONS	40	40
FIRST HOUR RATING - GALLONS	70	73
RECOVERY 90 DEG F RISE - GALLONS PER HOUR	41	41
FOAM THICKNESS - INCHES	1	2" Foam Cavity
ENERGY FACTOR	0.59	0.62
INPUT - BTUH	40,000	38,000
WATER CONNECTION SIZE - IN	0.75	0.75
GAS CONNECTION SIZE - IN	0.50	0.50
ASSEMBLED HEIGHT - IN	61.75	54.75
ASSEMBLED DIAMETER - IN	18.00	22.25
WEIGHT (APPROX) - LBS	500 LBS	500 LBS
NOTES	ALL	ALL

- NOTES:**
- NATURAL GAS RESIDENTIAL WATER HEATER.
 - SET TPR VALVE TO 125 PSIG AND ROUTE FULL-SIZE TPR LINE TO EXTERIOR AND ELBOW DOWN 6" AFG.
 - PROVIDE 24"DIAx3"D ALUMINIUM DRAIN PAND WITH 1-1/2" DRAIN CONNECTION. ROUTE DRAIN TO TAILPIECE OF NEAREST TRAPPED FIXTURE.
 - MUST MEET THERMAL EFFICIENCY AND STANDBY LOSS REQUIREMENTS OF US DEPARTMENT OF ENERGY AND ASHRAE/IESNA 90.1, 2009 IECC, AND CITY OF AUSTIN ENERGY CODE AMENDMENTS.
 - PROVIDE NG SHUT OFF VALVE AT WATER HEATER.
 - NON CONDENSING: PROVIDE AND INSTALL TYPE B FLUE THRU STORM COLLAR TO TYPE B ROOF CAP. ROUTE VENT WITH CLEARANCE TO COMBUSTIBLES PER CODE. ROUTE VERTICALLY THRU ROOF FROM ATTIC SPACE.
 - CONDENSING: PROVIDE AND INSTALL DUAL CHANNEL CO-AXIAL VENT SYSTEM - 3" DIRECT VENT FLUE INSIDE 6" FRESH AIR DUCT WITH KIT TO EXTERIOR WALL WITH WALL CAP. ALL COMBUSTION FLUES TO BE MINIMUM 10 FEET FROM FURNACE UNIT FRESH AIR UNIT INTAKES. MAX COMBINATION VENT DISTANCE IS 80 FEET. ROUTE FLUE/VENT TO EXTERIOR WALL BELOW FIRE RATED CEILING.
 - INSTALL EXACTLY PER MANUF INSTALLATION RECOMMENDATIONS AND PER LISTING APPROVAL.

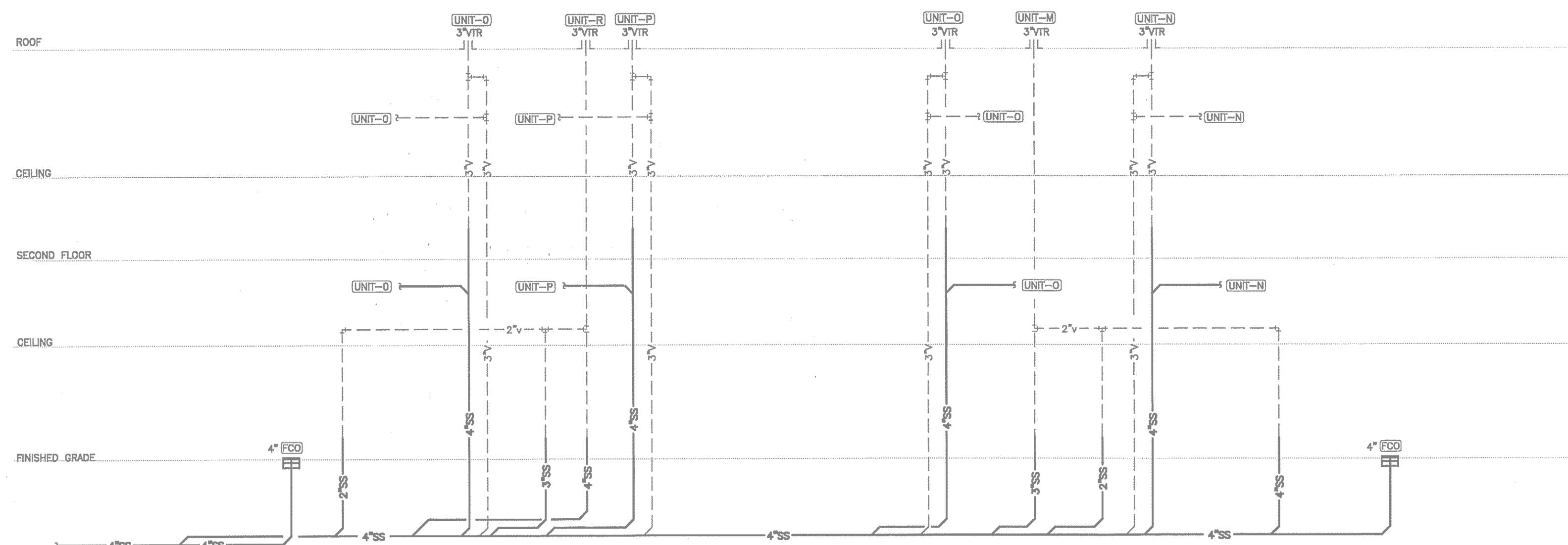
PIPE SCHEDULE

SERVICE	LOCATION	MATERIAL
DOMESTIC WATER (ABOVE SLAB)	COLD WATER	NIBCO "DURA-PEX" TUBING, FITTING AND MANIFOLD SYSTEM, BLUE COLOR, 1" INSULATION, NOTE 2.
DOMESTIC WATER (BELOW SLAB)	COLD WATER	NIBCO "DURA-PEX" TUBING, FITTING AND MANIFOLD SYSTEM, RED COLOR, 1" INSULATION, NOTE 2.
NATURAL GAS		BLACK STEEL GAS PIPING, ALL THREADED PIPING 2" PSI OR LESS. NO UNDERSLAB PIPING ALLOWED.
HVAC CONDENSATE	EXTERIOR	TYPE "L" COPPER TUBING, ASTM B88-03
	INTERIOR	PVC DWV, SOLVENT WELD WITH IAPMO LISTED SOLVENT CEMENT, ASTM D1785-03, INSULATE 1" CLOSED CELL FOAM, TAPED JOINTS.
SANITARY WASTE	ABOVE FLOOR	PVC DWV, SOLVENT WELD WITH IAPMO LISTED SOLVENT CEMENT, ASTM D1785-03
	BELOW FLOOR	PVC DWV, SOLVENT WELD WITH IAPMO LISTED SOLVENT CEMENT, ASTM D1785-03
SANITARY VENT	CONCEALED	PVC DWV, SOLVENT WELD WITH IAPMO LISTED SOLVENT CEMENT, ASTM D1785-03
	EXPOSED	PVC DWV, SOLVENT WELD WITH IAPMO LISTED SOLVENT CEMENT, ASTM D1785-03

- NOTES:**
- REFER TO GENERAL NOTES FOR ADDITIONAL REQUIREMENTS.
 - TUBING, FITTINGS AND MANIFOLDS SHALL BE MADE OF CROSS-LINKED HIGH DENSITY POLYETHYLENE SUITABLE FOR POTABLE WATER USE. NIBCO "DURA-PEX" PIPING SYSTEM, OR EQUAL.
 - ALL DOMESTIC WATER PIPING TO BE FLUSHED AND STERILIZED PRIOR TO SERVICE.



3 PLUMBING - RISER DIAGRAM UNIT O,P
SCALE: NONE



4 PLUMBING - BUILDING OVERALL RISER DIAGRAM
SCALE: NONE

ALL PLUMBING SHALL BE IN ACCORDANCE WITH CITY OF AUSTIN ADOPTED PLUMBING CODES. REVIEWED BY DATE 4/11/13. The granting of a permit for, or approval of these plans and specifications shall not be construed to be a permit for, or approval of, any violation of any of the provisions of the currently adopted plumbing code or any other ordinances of the City of Austin.

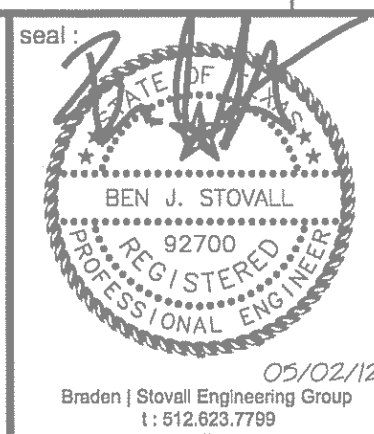


6601 Vaught Ranch Road, Suite 202 Austin, Texas 78730
t: 512.355.7500 f: 512.474.7782
© Braden Stovall Engineering Group, LLC

NO:	DATE:	ISSUE:	MARK:
	05-02-12	PERMIT ISSUE SET	

**THE PECOS SIXPLEX
MUELLER HOUSE**
STANDARD PACIFIC HOMES
LOT #16

4400 BERKMAN DRIVE
AUSTIN, TEXAS 78723



project #: 1208.03 date: 05-02-12

sheet title: **PLUMBING - RISER, DETAILS & SCHEDULES**

sheet #: **P3.0**



NOTES:

1. CONTRACTOR TO FIELD VERIFY ELEVATIONS AND DIMENSIONS OF FINISHED FLOORS AND WALLS. TRUE ALL DRAINS, ROUGH-INS AND CARRIERS WITH PROPOSED ELEVATIONS AND SURFACES.
2. MOUNTING HEIGHT ELEVATION OF ALL WALL HUNG OR COUNTER MOUNTED FIXTURES SHALL BE COORDINATED WITH THE ARCHITECTURAL DRAWINGS PRIOR TO INSTALLATION.
3. CONTRACTOR SHALL FIELD COORDINATE EXACT REQUIREMENTS OF, MAKE PROVISIONS FOR, AND SUPPLY ALL MATERIALS AND LABOR FOR MAKING FINAL PLUMBING CONNECTIONS.
4. ALL ROUGH-INS SHALL BE PROVIDED WITH A SOLID BRASS, CHROME PLATED STOP VALVE AND ESCHTCHEN PLATE.
5. SEAL ALL SPACES BETWEEN PLUMBING FIXTURES AND MOUNTING SURFACES WITH WHITE LATEX CAULK WIPED SMOOTH AND FLUSH WITH FIXTURE.
6. FINAL FIXTURE SELECTIONS ARE TO BE APPROVED BY D.R. HORTON.

ALL PLUMBING

NOTES:

1. NATURAL GAS RESIDENTIAL WATER HEATER.
2. SET TPR VALVE TO 125 PSIG AND THERM. FULL-SIZE TPR LINE TO EXTERIOR AND ELBOW DOWN 6" AFG.
3. PROVIDE 24"x14"x30" ALUMINUM DRAIN PAN WITH 1-1/2" TAP DRAIN CONNECTION. ROUTE DRAIN TO VALVE OF NEAREST TRAPPED FIXTURE.
4. MUST MEET THERMAL EFFICIENCY AND STANDSTY LOSS REQUIREMENTS OF US DEPARTMENT OF ENERGY AND ASHRAE/IESNA 90.1, 2009 IECC, AND CITY OF AUSTIN ENERGY CODE AMENDMENTS.
5. PROVIDE NG SHUT OFF VALVE AT WATER HEATER.
6. NON CONDENSING: PROVIDE AND INSTALL TYPE B FLUE THRU STORM COLLAR TO TYPE B ROOF CAP. ROUTE FLUE WITH CLEARANCE TO COMBUSTIBLES PER CODE. ROUTE VERTICALLY THRU ROOF FROM ATTIC SPACE.
7. CONDENSING: PROVIDE AND INSTALL DUAL CHANNEL CO-AXIAL VENT SYSTEM - 3" DIRECT VENT FLUE INSIDE 6" FRESH AIR DUCT WITH KIT TO EXTERIOR WALL WITH WALL CAP. ALL COMBUSTION FLUES TO BE MINIMUM 10 FEET FROM FURNACE UNIT FRESH AIR UNIT INTAKES, MAX COMBINATION VENT DISTANCE 45 FEET FROM ROOF LINE. ROUTE FLUE THROUGH EXTERIOR WALL, BURNER FIRE SHUT OFF VALVE.
8. INSTALL EXHAUST PER MANUF. INSTALLATION RECOMMENDATIONS AND PER LISTING APPROVAL.

NOTES:

1. REFER TO GENERAL NOTES FOR ADDITIONAL REQUIREMENTS.
2. TUBING, FITTINGS AND MANIFOLDS SHALL BE MADE OF CROSS-LINKED HIGH DENSITY POLYETHYLENE SUITABLE FOR POTABLE WATER USE. NIBCO 'DURA-PEX' PIPING SYSTEM, OR EQUAL.
3. ALL DOMESTIC WATER PIPING TO BE FLUSHED AND STERILIZED PRIOR TO SERVICE.



	GRAYWATER SUPPLY PIPING
	GRAYWATER WASTE PIPING
	PIPE SIZE REVISION

ALL PLUMBING
SHALL BE IN ACCORDANCE WITH CITY OF
AUSTIN ADOPTED PLUMBING CODE.
REVIEWED EDC DATE 4/1/13
The granting of a permit for, or approval of these plans
and specifications shall not be construed to be a permit
for, or approval of, any violation of any of the provisions
of the currently adopted plumbing code or any other
ordinances of the City of Austin.

BRADEN ★ STOVALL
ENGINEERING GROUP

6601 Vaught Ranch Road, Suite 202
Austin, Texas 78730

NO:	DATE:	ISSUE:	MARK:
	05-02-12	PERMIT ISSUE SET	

**THE PECOS SIXPLEX
MUELLER HOUSE**
STANDARD PACIFIC HOMES
LOT #16

4400 BERKMAN DRIVE
AUSTIN, TEXAS 78723

project # :	1208.03	date :	05-02-12
-------------	---------	--------	----------

sheet title : **PLUMBING - RISER, DETAILS & SCHEDULES**

sheet # : **P3.0**