

Adams-Hemphill Neighborhood Park

**Waller Creek: Guadalupe Flood Risk Reduction Project,
November 12, 2024**

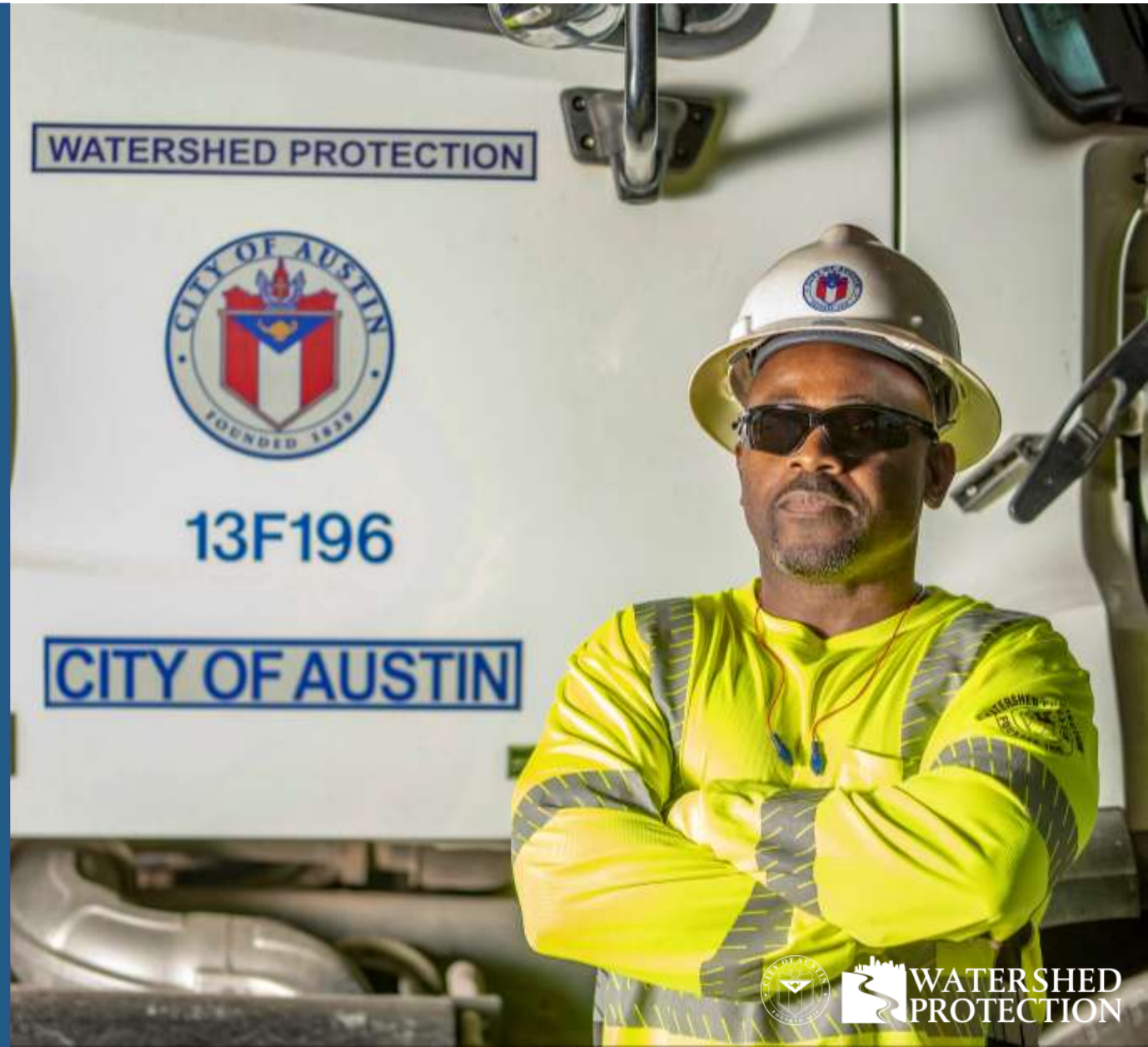
Agenda

- Introductions
- Guadalupe Flood Risk Reduction Project
- Proposed Park Concept Plan
- Next Steps
- Questions



Watershed Protection

Protects lives, property and the **environment** of our community by reducing the impact of **flooding, erosion** and **water pollution**.



Introductions

- Stephanie Lott, *Public Information Specialist Sr*
- Dario Octaviano, *Project Manager*
- Hanh Thai, *Project Sponsor*
- Matt Milano, *Freese and Nichols Consultant*





What is a Storm Drain System?

- System of streets, ditches, pipes and culverts
- Drains rainfall from streets to nearby creek
- Inlets are placed along curb to catch rainfall
- Streets should drain in most storms

Components of a Storm Drain System

1. Inlets and curbs capture rainwater.



2. Underground pipes carry the water.

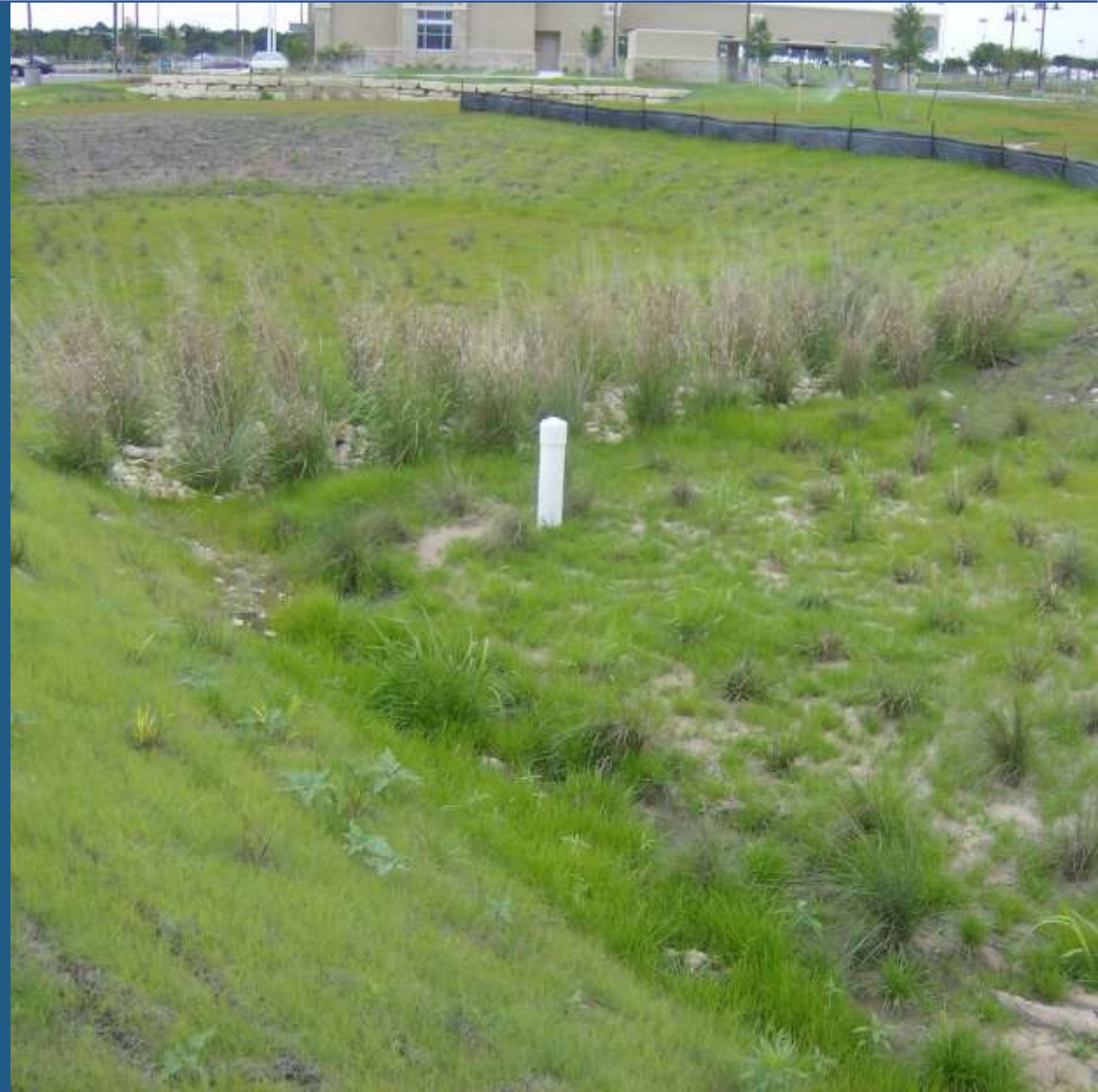


3. Rainwater is released into a creek at the outfall. Sometimes it goes to a water quality or detention pond first.



Stormwater Detention Basin or Pond

- Storm drain system releases water into basin instead of creek
- Water held temporarily in basin; Code requires it to be drained within 24 hours after a storm event
- Used to reduce flood risk
- Can also help remove pollutants



Why did we start the Guadalupe Flood Risk Reduction Project?



Annual Chance Event (ACE)*	Reoccurrence Interval	Estimated # of Structures Flooded
50%	2-yr	43
10%	10-yr	170
4%	25-yr	224
1%	100-yr	285

*ACE – represents the chance of the storm happening any given year



Guadalupe Project

- Reduces flood risk between 47th and 33rd Streets.
- Improves water quality throughout the project area and creek downstream of the park
- Includes expanding and upgrading storm drain system
- Includes new and modified stormwater detention basins
- Includes improvements to water and wastewater lines



Using Parkland

- Phase 1 has explored many alternatives to stormwater detention, all of which have been deemed not feasible
- The Guadalupe Project has no other choice but to use parkland for detention basins
- State Parks and Wildlife Code, Title 3, Chapter 26 defines parks as protected land and outlines the process for using it

Texas Parks and Wildlife Code, Title 3, Chapter 26

Section 26.001. Protected Land; Notice of Taking

- State agencies cannot approve programs or projects that use or take public land designated for parks, recreation, scientific area, wildlife refuge, or historic sites unless their authorized governing body or officer determines:
 1. There is no feasible and prudent alternative to the use or taking of such land
 2. The program or project includes all reasonable planning to minimize harm to the land, as a park, recreation area, scientific area, wildlife refuge, or historic site, resulting from the use or taking

Park Mitigation Fee

- A Park Mitigation Fee will be paid to offset the use of the park
- This Fee is calculated by Austin PARD and paid by Watershed
- The cost of park improvements are subtracted from fee
- Remaining fee is estimated to be between \$3 and \$6 million*
- Fee is generally designated for use at the same park or a nearby park

*Numbers are preliminary and may change

Concept Planning for Adams-Hempill Neighborhood Park

- Guide design of stormwater detention basins
- Maximize use and enjoyment of park

Outreach

- Initial Survey and Open House – 2022
- Advisory Committee Meetings – 2023
- NUNA Meeting - 2023
- Draft Concept Plans, Meeting and Survey – 2023

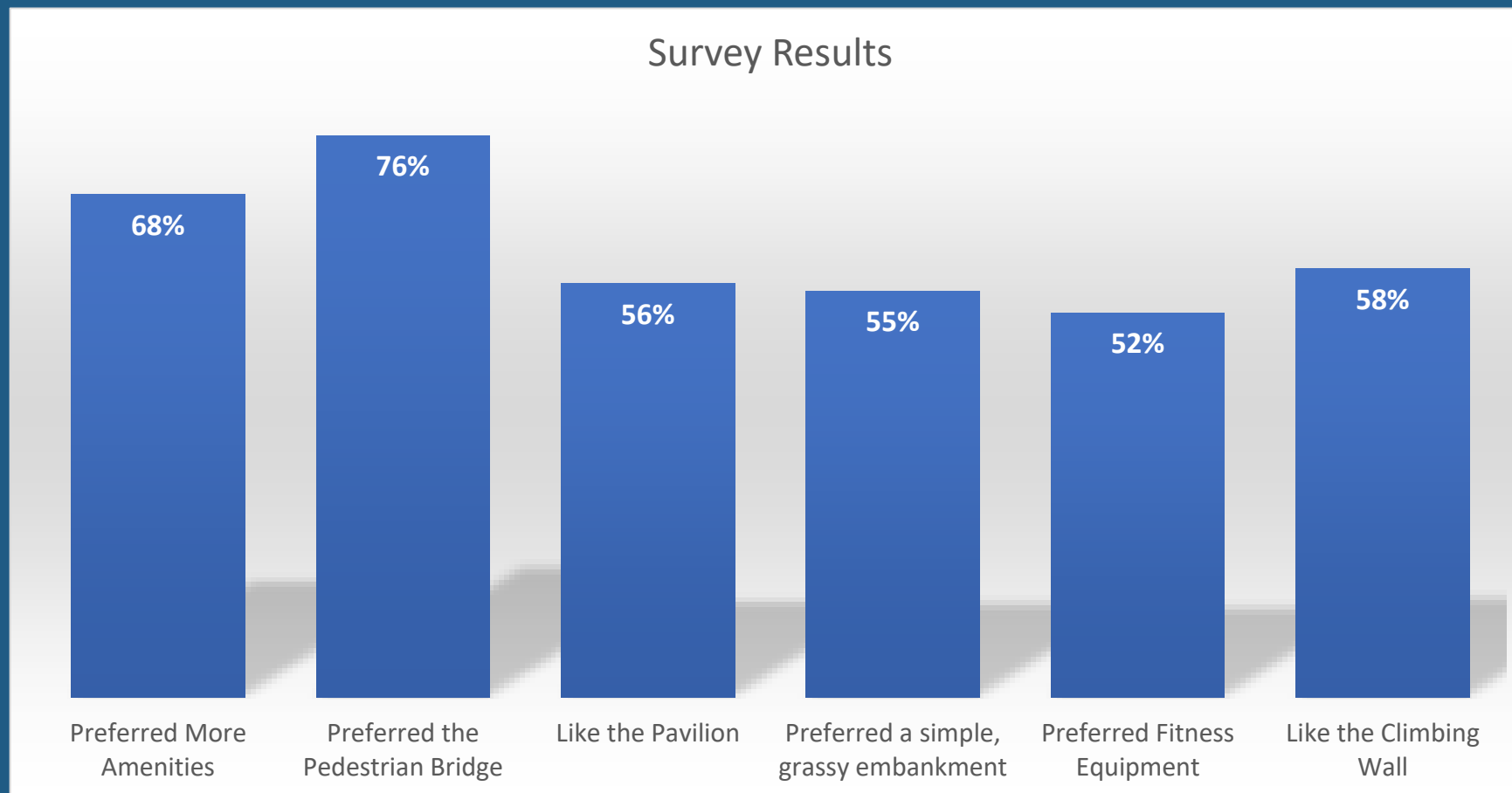
Proposed Concept Plan

- Previously presented two draft concept plans
- Incorporated feedback from previous surveys
- Tried to find a balance between differing opinions

Two Competing Themes

- Most respondents wanted more amenities (68%)
- Others wanted fewer amenities and to preserve the open space (22%)

Survey Results on Website: [AustinTexas.gov/Hemphill](https://austintexas.gov/Hemphill)



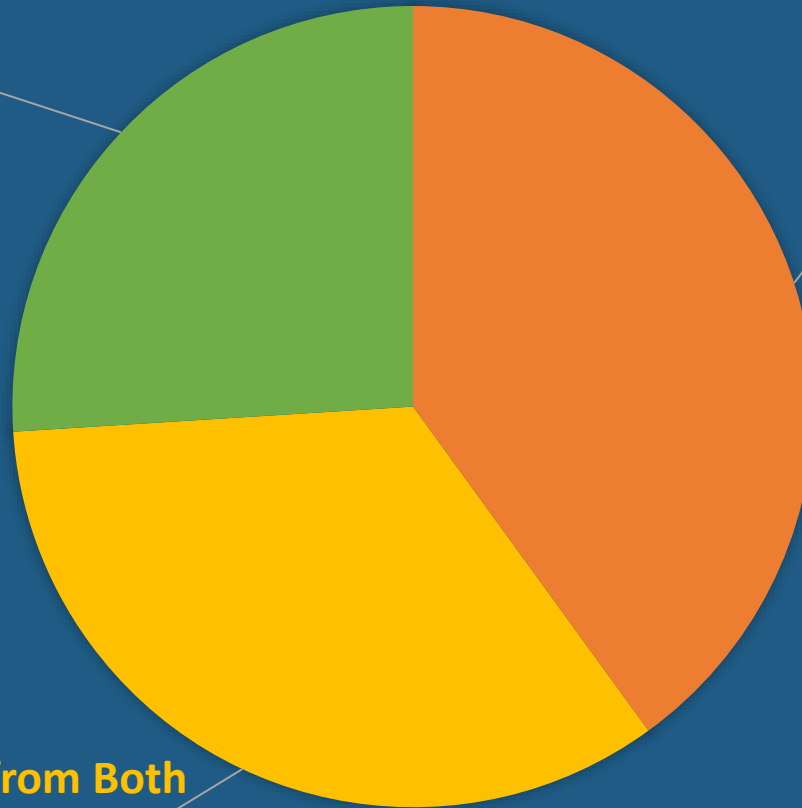
Survey Results: Comparing Previous Drafts

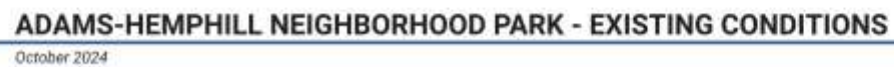
CONCEPT PLAN PREFERENCE

Preferred Concept Plan 2
26%

Preferred Concept Plan 1
40%

Preferred Elements from Both
34%



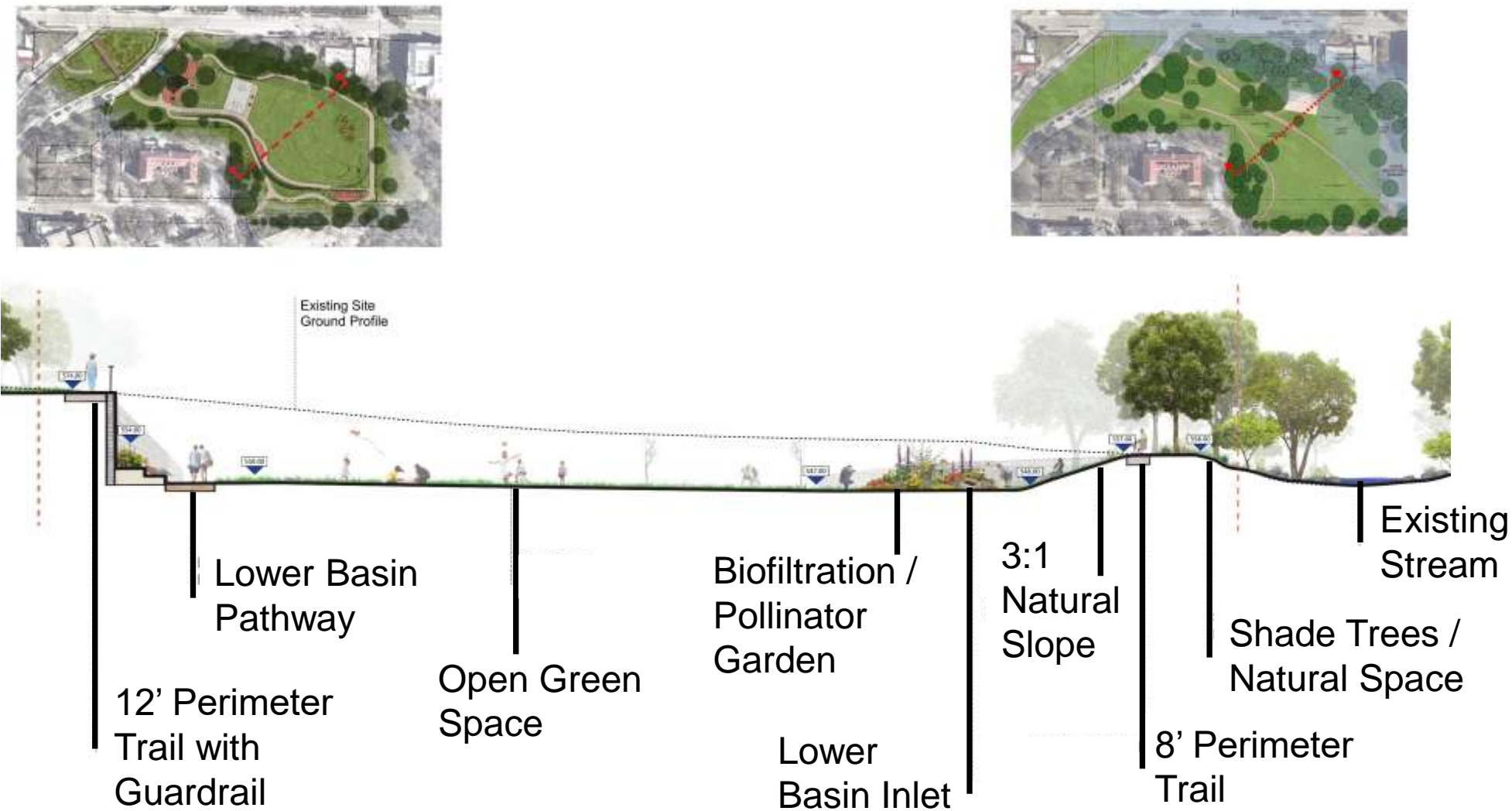




Proposed Concept Plan – Balance of Amenities and Open Space

- Grassy, more level open field
- Same sized basketball court with Dark-Skies compliant lighting
- Expanded play area with traditional and nature-inspired play features
- ADA-accessible concrete walking trail
- Small pavilion, available on first come, first served basis
- Pedestrian bridge over the fenced water quality pond
- Benches, picnic tables, and a water fountain that will serve both people and dogs
- A relocated outlet to the edge of the field for more open space



ATX FLOOD SAFETY

Storm Drain Capital Improvement Program Project Phases

In House
Feasibility

Preliminary
Engineering

Design

Permitting
&
Bidding

Construction

We are
here

Funding Update

- Total estimated cost of Guadalupe Project is over \$100 million
- Exploring funding alternatives for construction, including federal and state grants and loans
- The overall Guadalupe Project will be divided into phases due to funding constraints
- The proposed amenities and modifications to the Adams-Hemphill Neighborhood Park would be included in Phase 1

Funding Phase 1 – Approx \$17 million

Actively applying for loans from Texas Water Development Board (TWDB)

Clean Water State Revolving Fund Anticipated Timeline

We
are
here

- Spring 2024 – Submitted Project Information Form
- Fall 2024 – Formally Invited to Apply
- Winter 2024 – Submit Application*
- Spring 2025 – Respond to Requests for Information
- Summer 2025 – TWDB Board Approval of Application
- Fall/Winter 2025 – Loan Closing

*Item on City Council Agenda (Dec 12th) to approve funding application

Next Steps

- Gather community input on the proposed plan
 - Survey is at austintexas.gov/Hemphill, closes December 1st
- Final plan goes to the Parks and Recreation Director for approval
- Public Hearing at Parks and Recreation Board on the dual usage of land for park and drainage
- Public Hearing at City Council on dual usage of land for park and drainage
- Secure funding

If use of the park is not approved by City Council, we cannot proceed with the project to reduce flood risk of 285 structures between 47th St. and 33rd St.

Ground Rules

Everyone is encouraged to participate!

1. Step up, Step back

Please be brief and to the point. Let others have an opportunity to speak.

2. Mute, Unmute

When called upon, unmute your microphone. One person speaks at a time. When you finish speaking, please be sure to put yourself back on mute.

3. Be Mindful

Please be respectful of staff and other attendees. Demeaning, derogatory, disruptive, inflammatory, threatening or vulgar language or actions will not be permitted and may result in attendee(s) being removed from the meeting.

Questions: Two Ways

Raise Your Hand:

Click “Raise Your Hand.” When called on, unmute yourself and speak. Don’t forget to lower your hand afterwards.

Type Your Question:

Click “Q&A” and type your question. You can also “upvote” other people’s questions by liking them.



Chat



Raise Hand



Q&A



Live Transcript



Interpretation

PROJECT TEAM





Thank you!