

Little Bee Creek Watershed

Watershed Overview

Catchment	Total area	1.2 sq. miles						
	Area in recharge	0.42 sq. miles						
	Creek length	2 miles						
	Receiving water	Town Lake						
Demographics	2000 population	665						
	2030 projected population	2,941						
	30 year projected % increase	342 %						
Land Use	Impervious cover (2003 estimate)	18.1 %						
	Impervious cover (2013 estimate)	17.5 %						
Overall EII Scores	2001	2004	2007	2010	2012	2014	2016	
	64	47	48	51				

(Little Bee Creek watershed was removed from the EII sampling list due to lack of reliable flow)

Flow Regime* for Sample Sites on Little Bee Creek

Site	1999		2001				2004				2007				2010					
	Jan	Jan	Mar	Mar	Jun	Sep	Mar	May	Jun	Oct	Dec	Feb	May	Jun	Sep	Dec	Mar	May	May	Oct
	WQ	Bio	WQ	Bio	WQ	WQ	WQ	WQ	WQ	WQ	WQ	WQ	WQ	Bio	WQ	WQ	WQ	WQ	Bio	WQ
272	B	B	B	B	n	B														
1105	n	n	B	B	B	n	B	n	n	n	B	B	n	n	n	n	n	n	n	n

* B = baseflow n = no flow S = storm flow blue = Samples were taken light blue = Samples were not taken blank = not visited

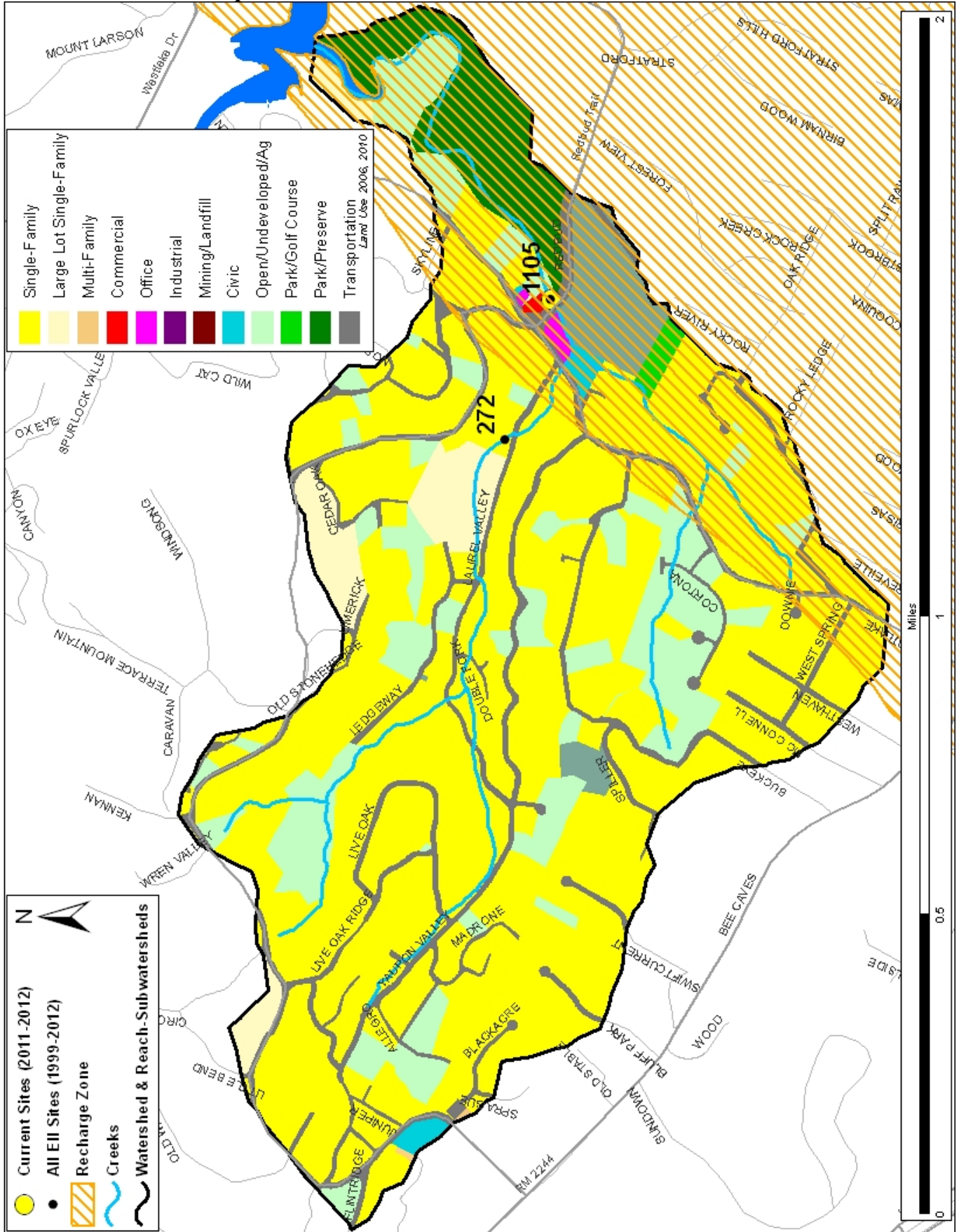
Index scores* for Little Bee Creek by Year

Reach	Site	Site Name	Year	Water Quality	Sediment**	Contact Rec.	Non-Contact Rec.	Physical Integrity	Aquatic Life	Benthic subindex	Diatom subindex	Total EII Score
LBE1	272	Little Bee Creek @ Laurel Valley Rd	1998	54	93	88	72	55	34	28	40	66
LBE1	1105	Little Bee Creek @ Red Bud Trail	1998	46	93	95	53	53				57
LBE1	272	Little Bee Creek @ Laurel Valley Rd	2001	48	70	73	80	70	56	43	68	64
LBE1	1105	Little Bee Creek @ Red Bud Trail	2001	44	70	84	88	46	41	31	51	61
LBE1	1105	Little Bee Creek @ Red Bud Trail	2004	47	73	58	45	61				47
LBE1	1105	Little Bee Creek @ Red Bud Trail	2007	36	75	71	53	53				48
LBE1	1105	Little Bee Creek @ Red Bud Trail	2010		53		88	63				51

* blank cells indicate parameter was not collected, blank row indicate site was dropped **sediment samples only collected at the downstream site
100-87.5 Excellent 87.5-75 V. Good 75-62.5 Good 62.5-50 Fair 50-37.5 Marginal 37.5-25 Poor 25-12.5 Bad 12.5-0 V. Bad

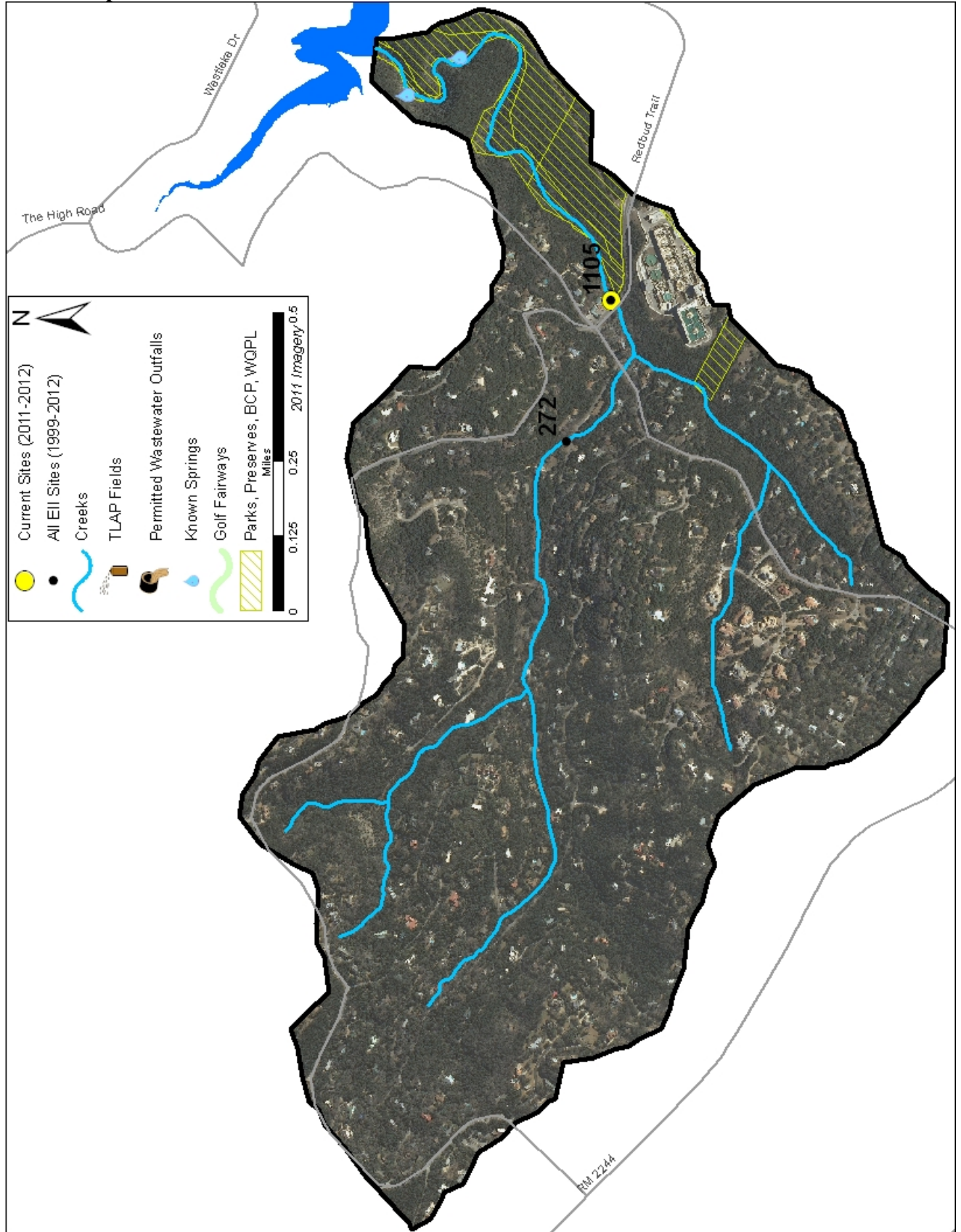
Little Bee Creek Watershed

Land Use Map



Little Bee Creek Watershed

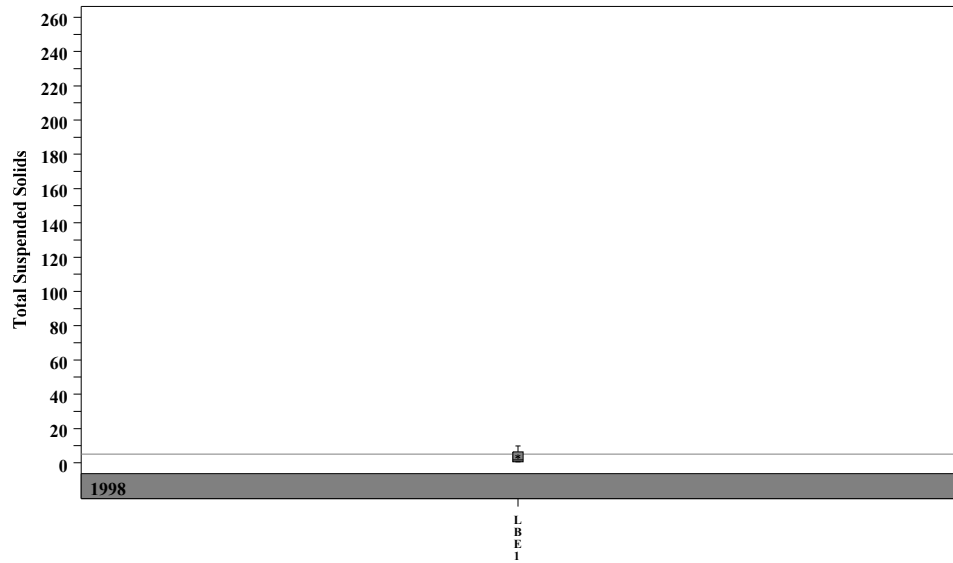
Aerial Map



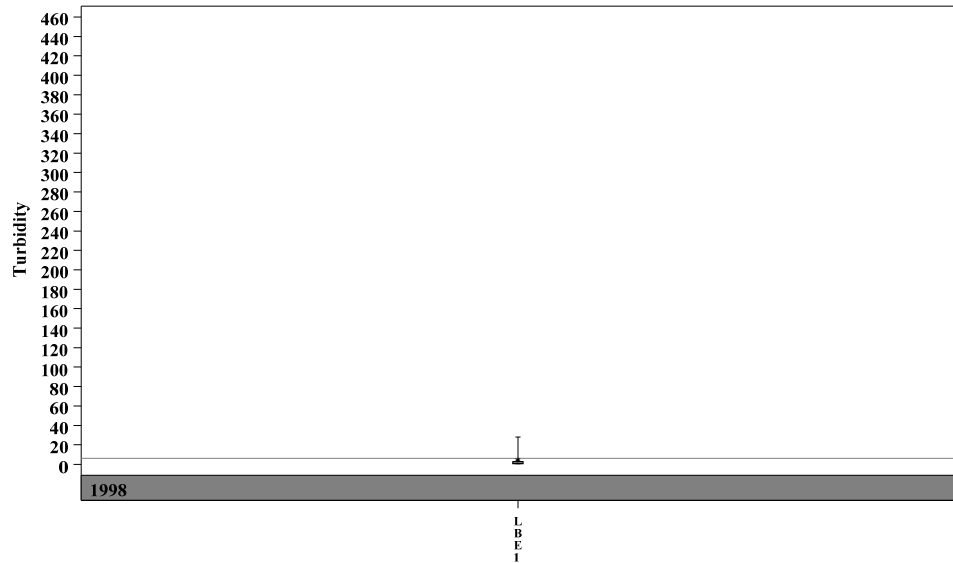
Little Bee Creek Watershed

Data Summary Graphs – Total Suspended Solids, Turbidity, pH (Downstream to Upstream by Year)

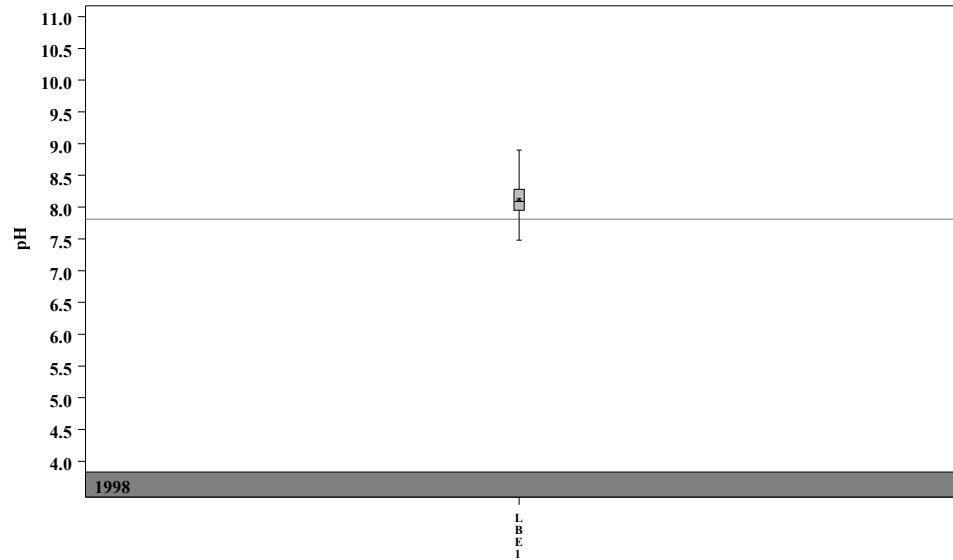
Parameter=TOTAL SUSPENDED SOLIDS Unit=mg/L Watershed=Little Bee Creek



Parameter=TURBIDITY Unit=NTU Watershed=Little Bee Creek



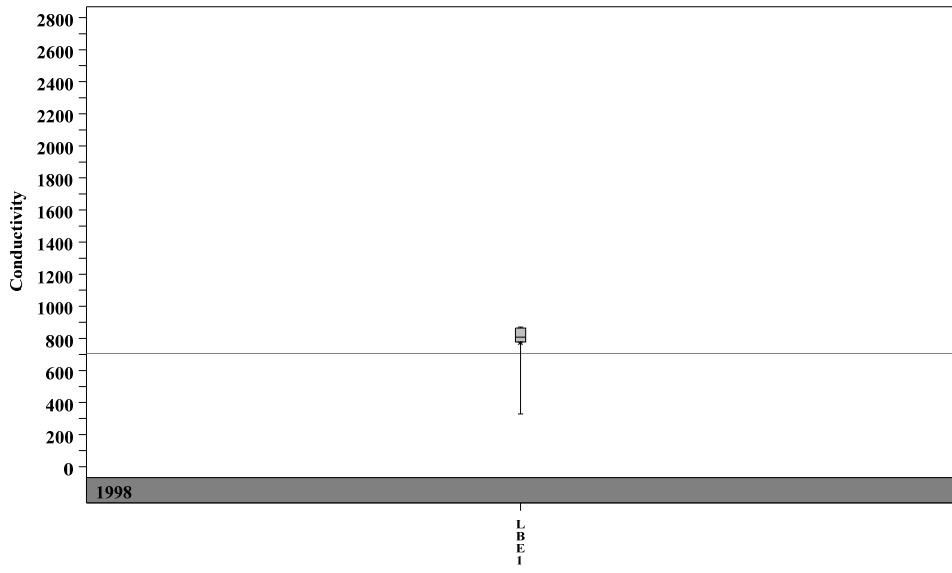
Parameter=pH Unit=Standard Units Watershed=Little Bee Creek



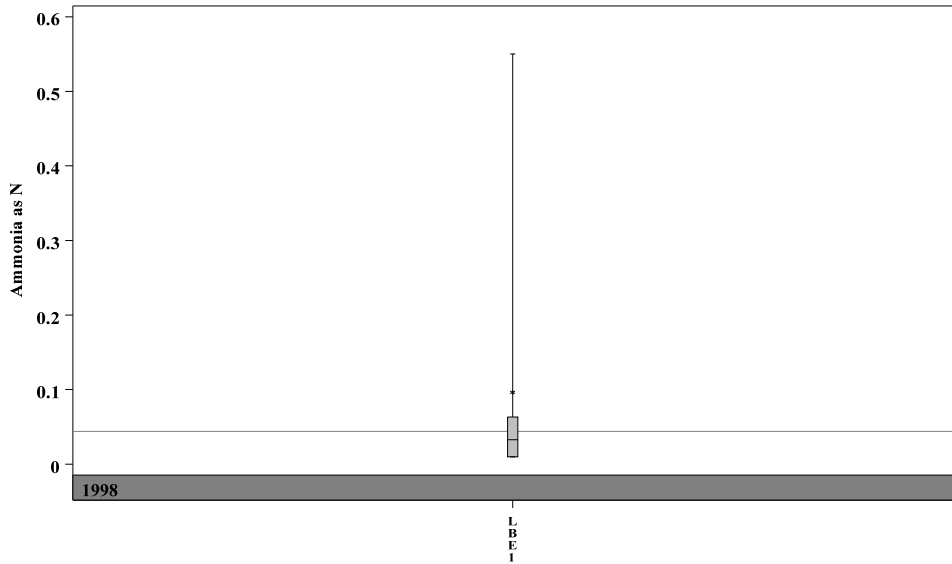
Little Bee Creek Watershed

Data Summary Graphs – Conductivity, Ammonia, Nitrate/Nitrite (Downstream to Upstream by Year)

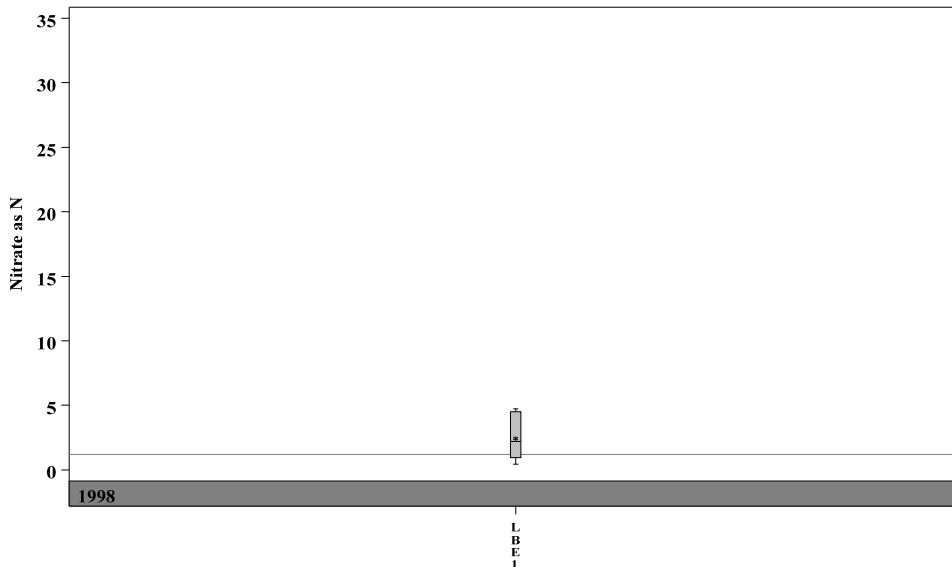
Parameter = CONDUCTIVITY Unit = uS/cm Watershed = Little Bee Creek



Parameter = AMMONIA AS N Unit = mg/L Watershed = Little Bee Creek



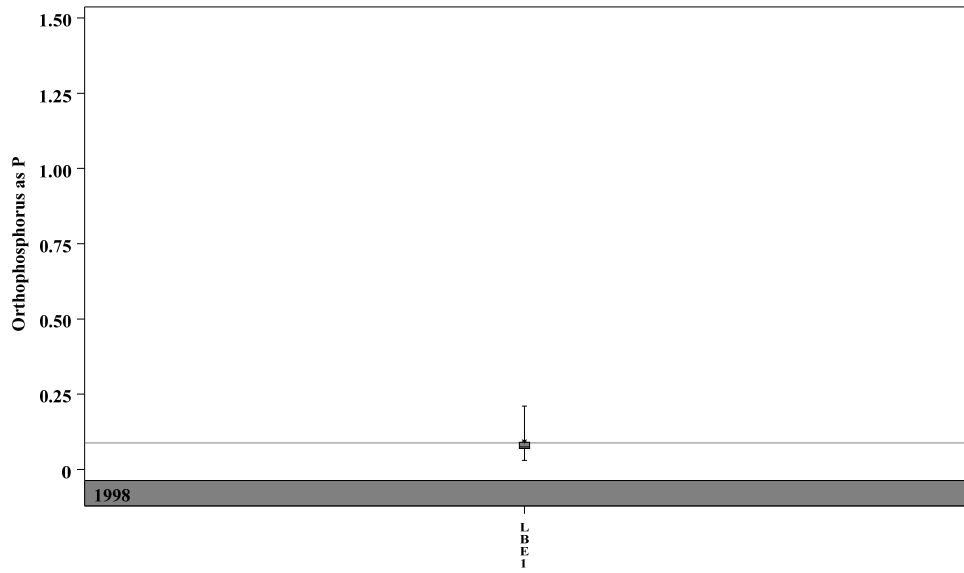
Parameter = NITRATE AS N Unit = mg/L Watershed = Little Bee Creek



Little Bee Creek Watershed

Data Summary Graphs – Orthophosphate, Dissolved Oxygen, E.coli (Downstream to Upstream by Year)

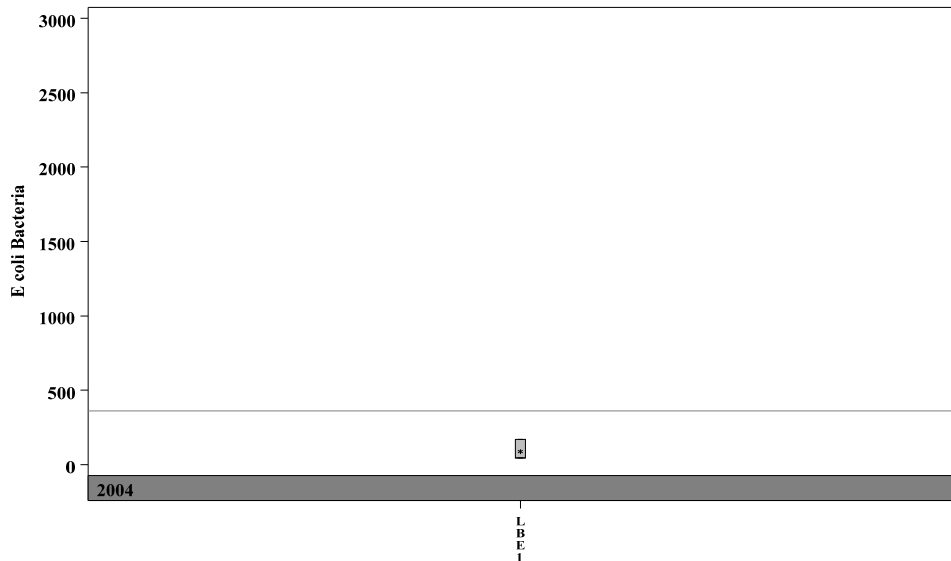
Parameter = ORTHOPHOSPHORUS AS P Unit = mg/L Watershed = Little Bee Creek



Parameter = DISSOLVED OXYGEN Unit = mg/L Watershed = Little Bee Creek

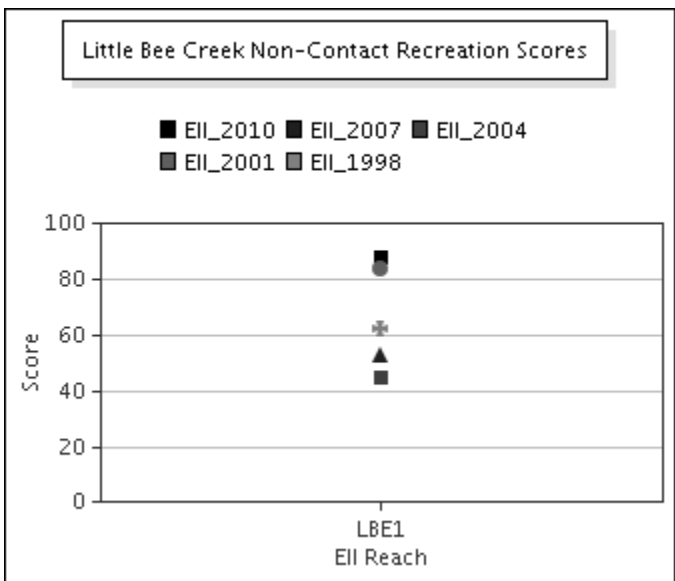
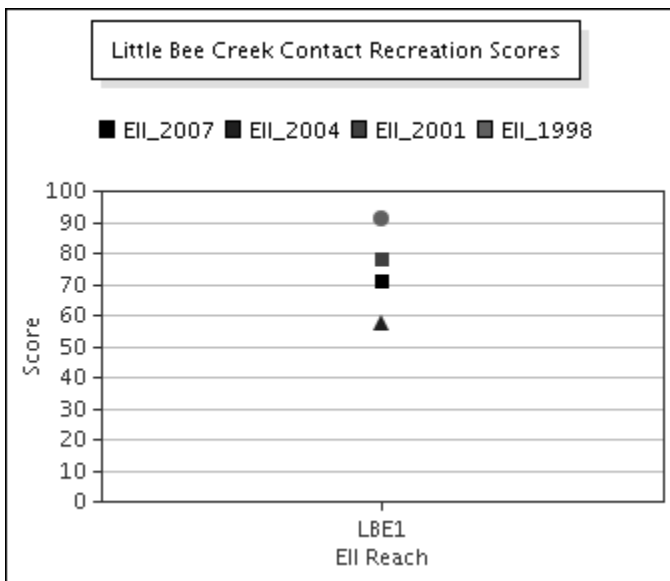
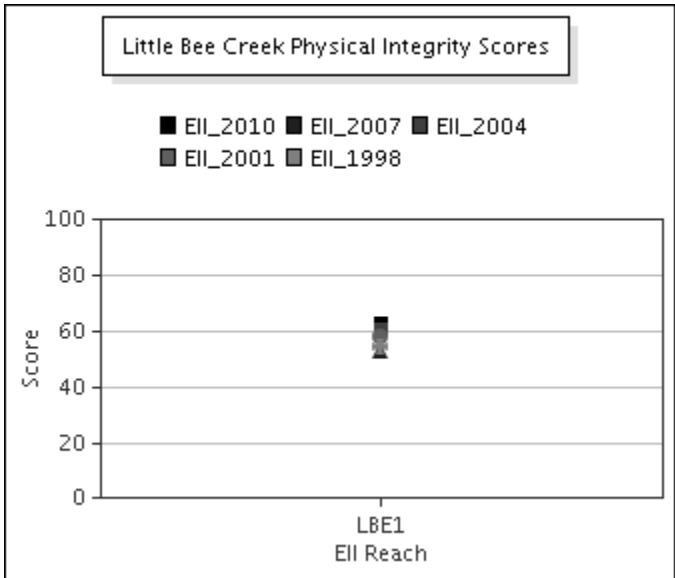
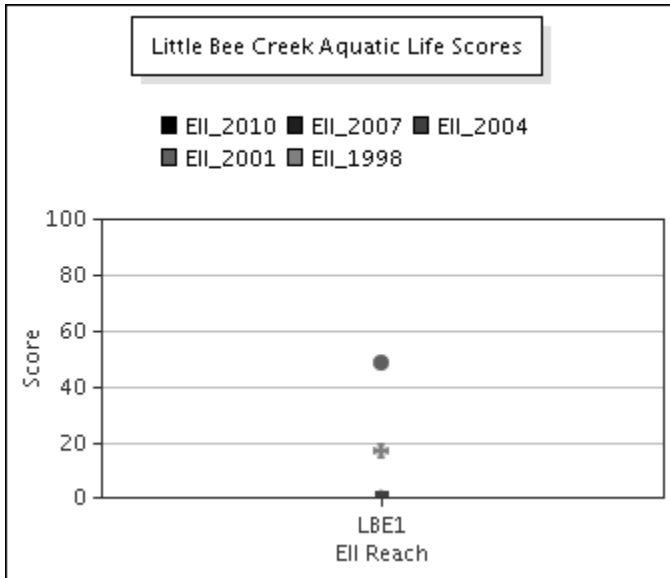
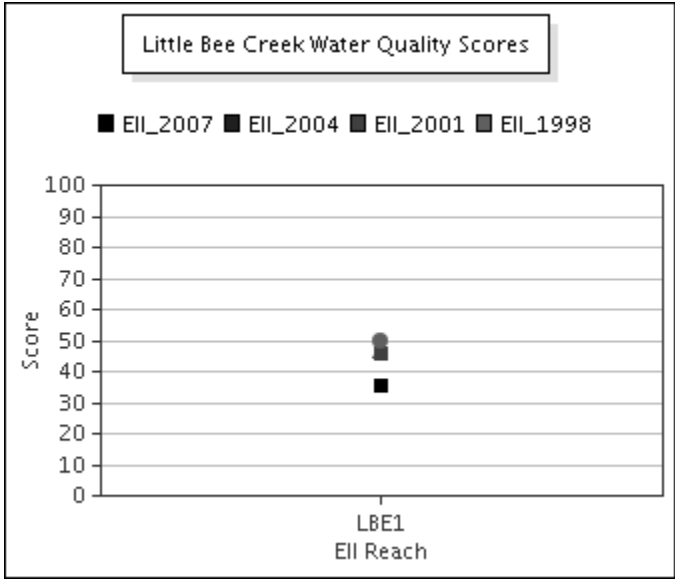
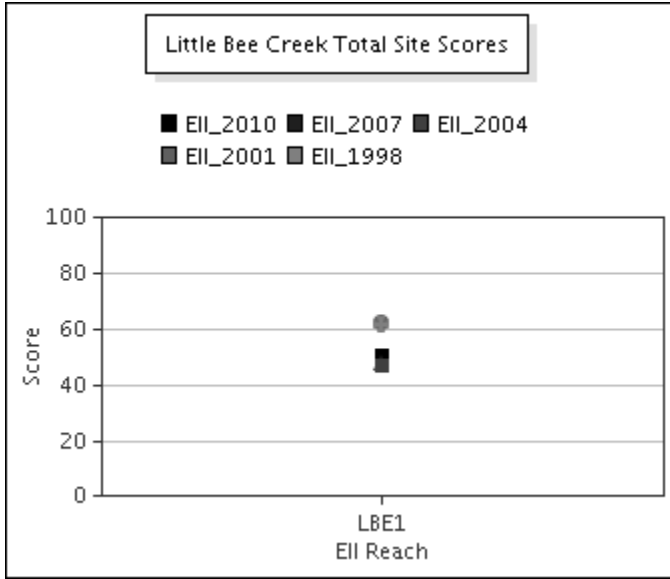


Parameter = E COLI BACTERIA Unit = MPN/100mL Watershed = Little Bee Creek



Little Bee Creek Watershed

Score Summary – Reach scores for each sample year



Little Bee Creek Watershed

Site Photographs



1105_us_06_18_2007



1105_ur_06_18_2007



1105_ds_06_18_2007



1105_00-us-05_17_2010



1105_00-ur-05_17_2010



1105-dt-03_04_2010

