

Fort Branch Creek – Delores Tributary Waste Removal & Stream Restoration

Springdale – Airport Neighborhood Association
September 24, 2019



WATERSHED
PROTECTION



City Staff in Attendance

- Eric Loucks, PE – Watershed Protection
- Oscar Garza – Watershed Protection
- Celestine Ngam – Watershed Protection
- Matthew Hart – Public Works



Presentation Outline

- Introductions
- Watershed Protection Department – Overview of what we do
- Introduction to the Delores Tributary Waste Removal Project
- Questions, Answers & Comments



Watershed Protection Department (WPD) Mission

"We protect lives, property and the environment of our community by reducing the impact of flooding, erosion and water pollution."



WATERSHED
PROTECTION

Watershed Protection Department (WPD) Mission

EROSION

WATER CONTAMINATION



FLOODING



**WATERSHED
PROTECTION**

Accomplishing Our Mission

- Public Education Programs
- Regulatory Programs
- Drainage System Maintenance
- Construction Projects



WPD Activities & Projects

1. Waterway maintenance & vegetation control

using in-house crews
and contracts



- Clearing Blockages



- Grading to Drain



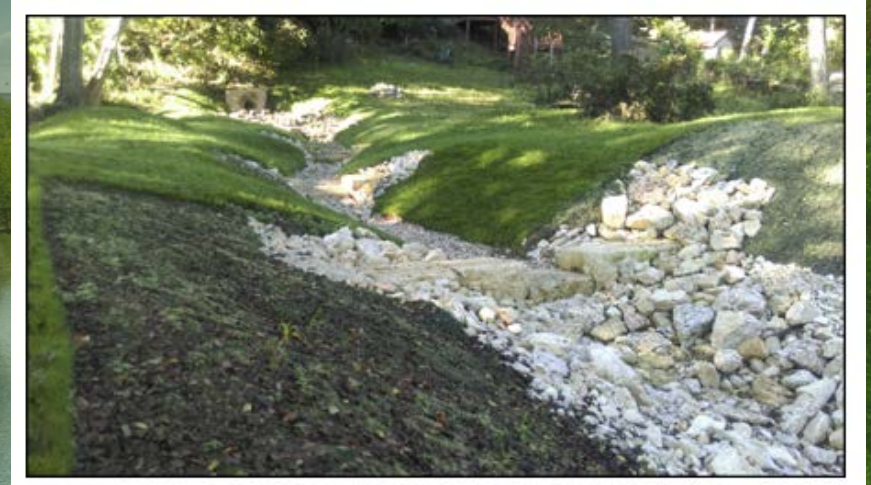
- Erosion Crews

WPD Activities & Projects

2. *Small Projects*
designed by WPD staff
engineers and
constructed by WPD
crews



Before

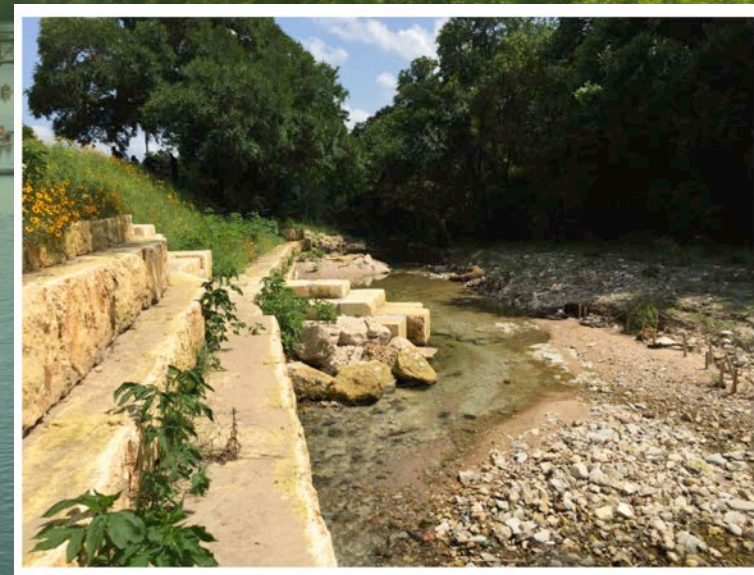


After

Tannehill Branch Creek - Givens Park Bank Stabilization and Rain Garden



Before



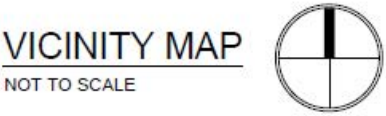
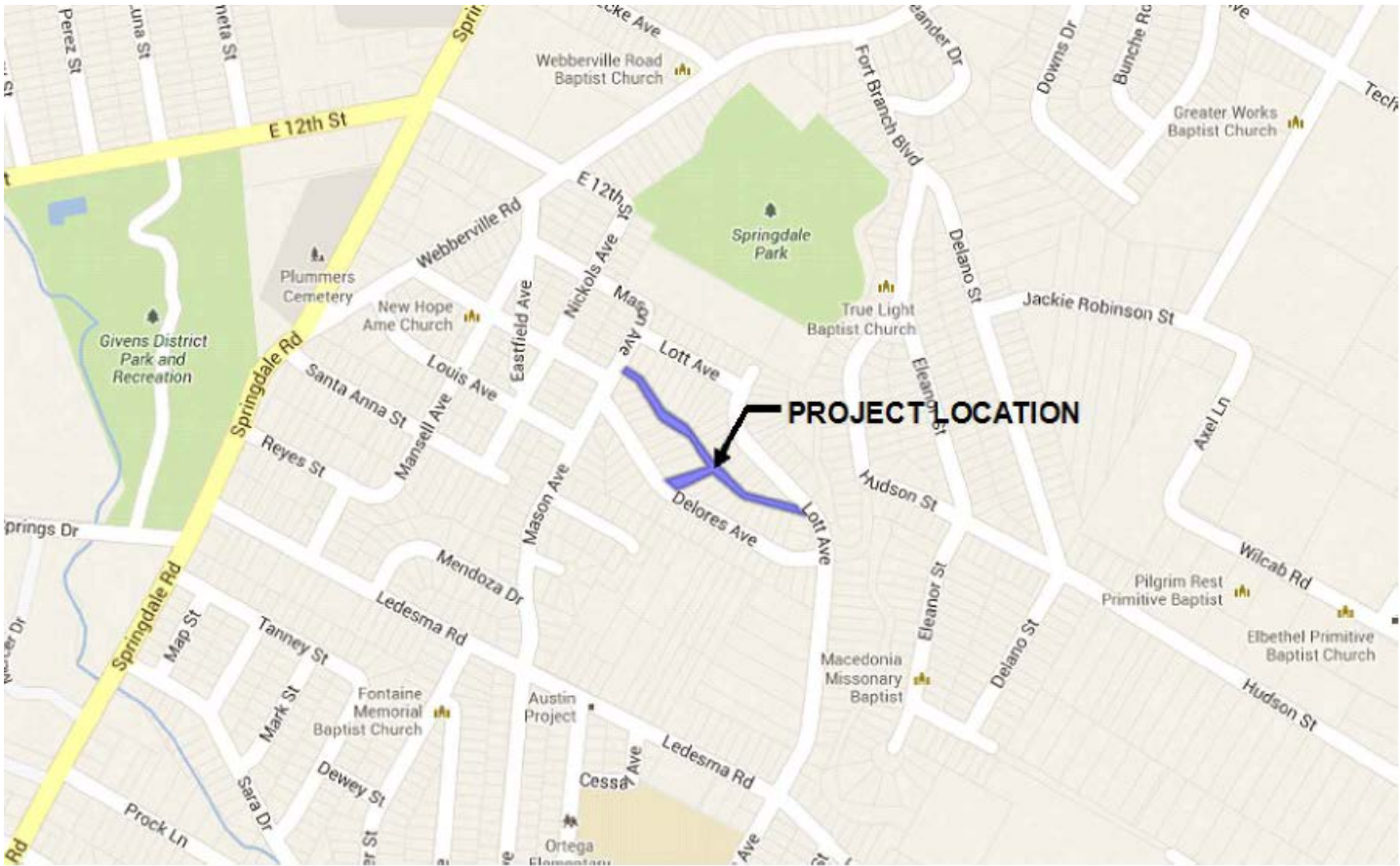
After

WPD Activities & Projects

3. Large Projects
Capital Improvement
Projects (CIP) designed
by consultants and built
by contractors

Waste Removal & Stream Rehabilitation Project

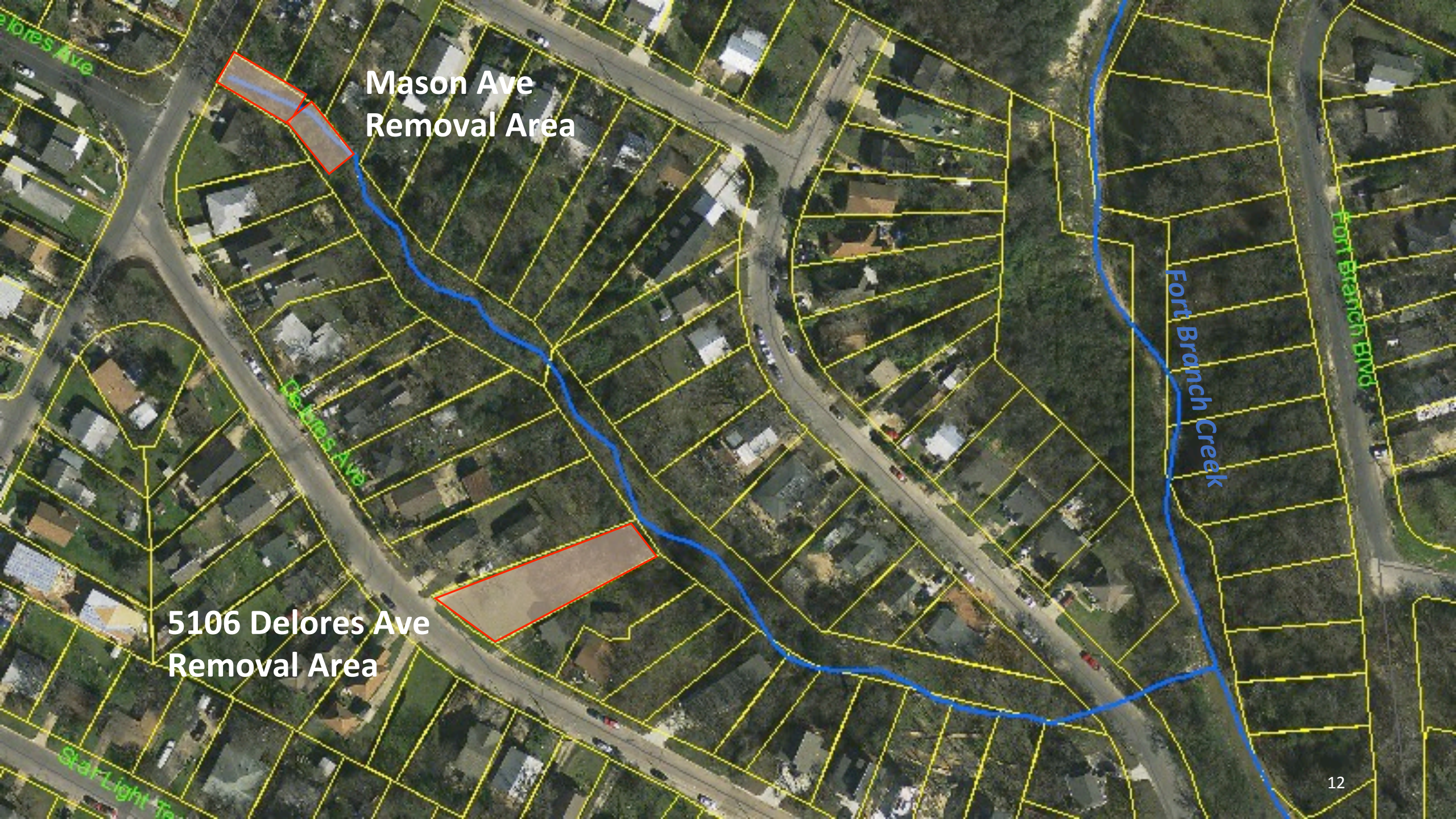
Proposed Project Location



Project Components

- Remove municipal waste downstream of Mason Ave.
- Remove municipal waste on City property at 5106 Delores Ave.
- Stabilize streambanks using limestone blocks
- Restore disturbed areas





**Mason Ave
Removal Area**

**5106 Delores Ave
Removal Area**

Before: eroding
streambank

Waste Removal & Stream Rehabilitation Project



Before: Delores Ave. -
standing at the outfall
looking downstream



Waste Removal & Stream Rehabilitation Project





Waste Removal & Stream Rehabilitation Project

After: similar project
(Boggy Creek)



Schedule



Other Information

- All work will occur on city property or in drainage easements
- Waste will be removed and hauled to a solid waste landfill
- Air quality will be monitored throughout the project
- Replacement trees will be planted on the disturbed area



Questions?
Comments?
