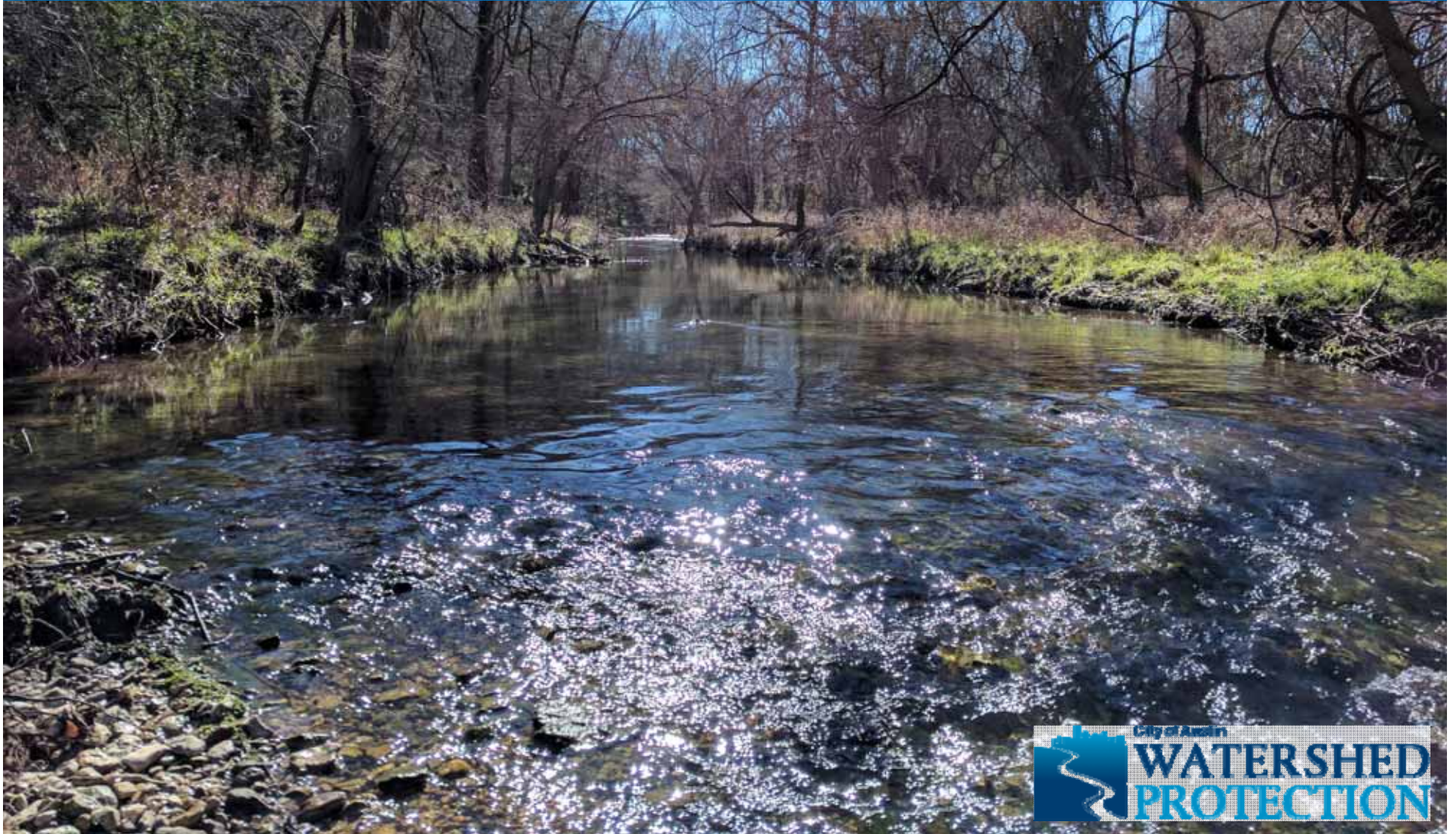


# Floodplain Mapping Changes

Public Meeting February 22, 2017





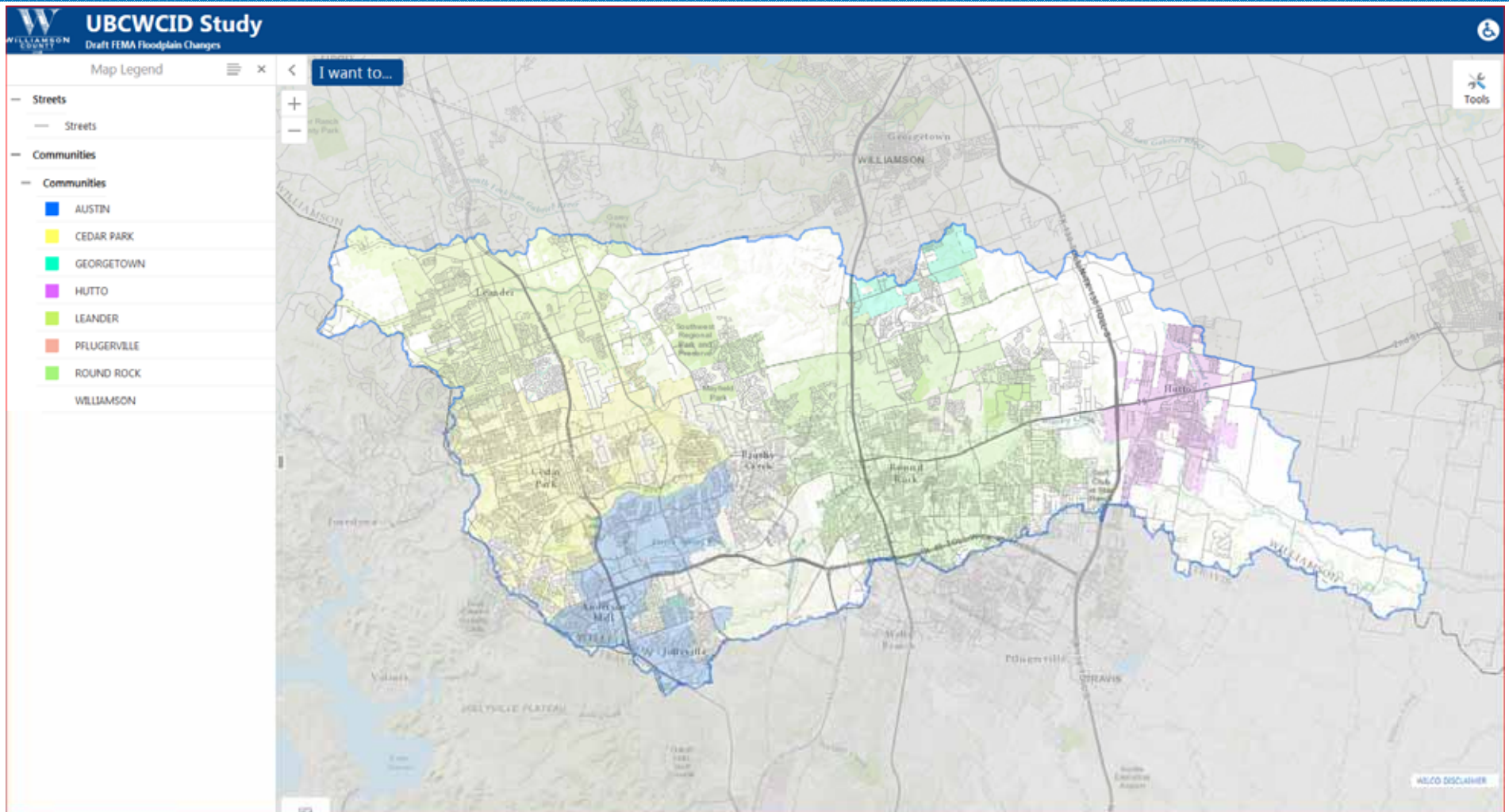
# Meeting Overview

- New Floodplain Study
  - Why?
  - Where?
  - When?
- How will it affect you?
  - Flood Safety
  - Development Rules
  - Flood Insurance
- Group Q&A
- Breakout Groups



# Partners:

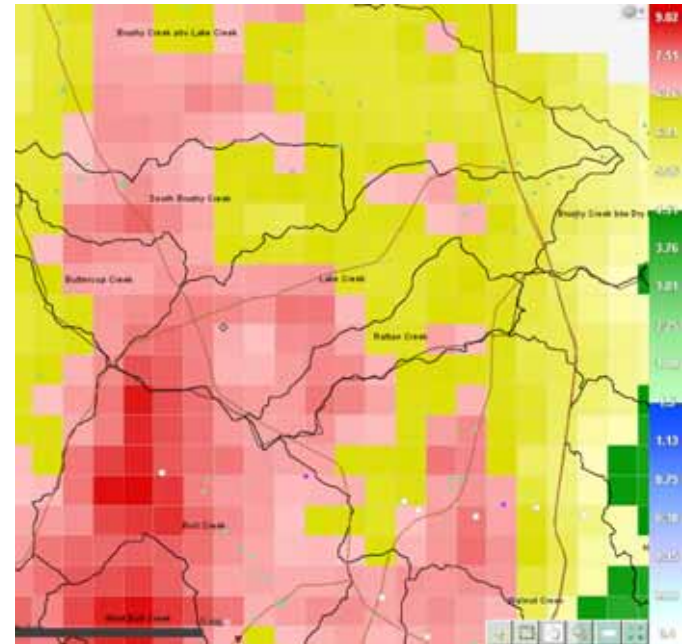
Upper Brushy Creek Water Control Improvement District, TWDB, Williamson County, Leander, Cedar Park, Austin, Round Rock, and Hutto





# Floodplain Study

- Flood study initiated in Spring 2012 in response to
  - Flooding from Tropical Storm Hermine (September 2010).
  - Planned FEMA study for portions of area
- Goals: Understand Flood Risk
  - Public safety
  - Flood mitigation
- Final products
  - Updated floodplain maps
  - Flood protection plan for area
    - Regional flood mitigation projects
    - Updated hazard mitigation plans
- <http://www.upperbrushycreekwcid.org/>



# Floodplain Study

- 4 parts to a study
  - Survey  
(size of creek)
  - Hydrology  
(how much water)
  - Hydraulics  
(how high is the water)
  - Mapping  
(where does the water go)



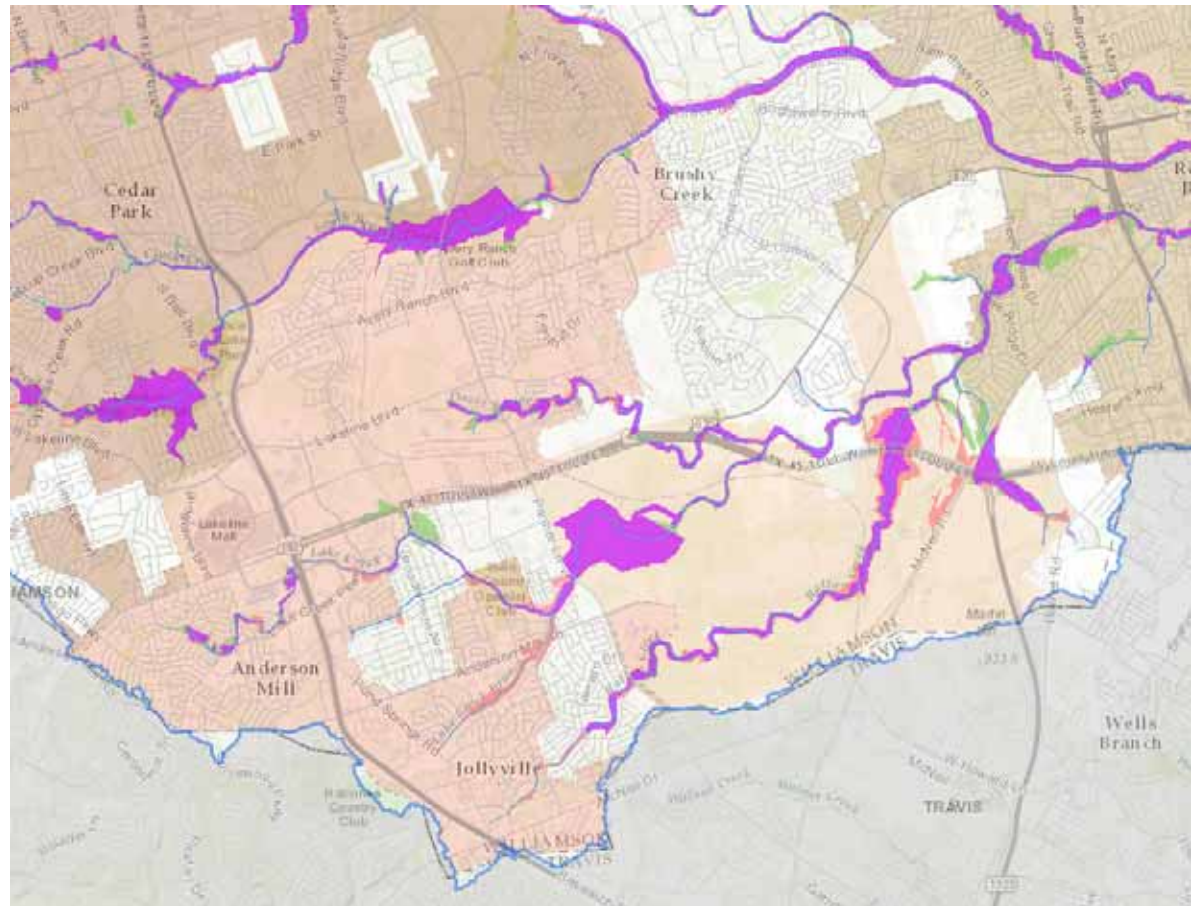
# Fully-developed vs. FEMA floodplains

- There are two types of floodplain maps used in Austin
  - FEMA floodplains are printed on Flood Insurance Rate Maps (FIRMs) and show the risk as it exists today. They are used to set flood insurance rates.
  - Fully-developed floodplain maps depict what flood risk is anticipated to be based on future development. These maps are used by the City to regulate development and ensure new buildings will remain protected from floods as development occurs.



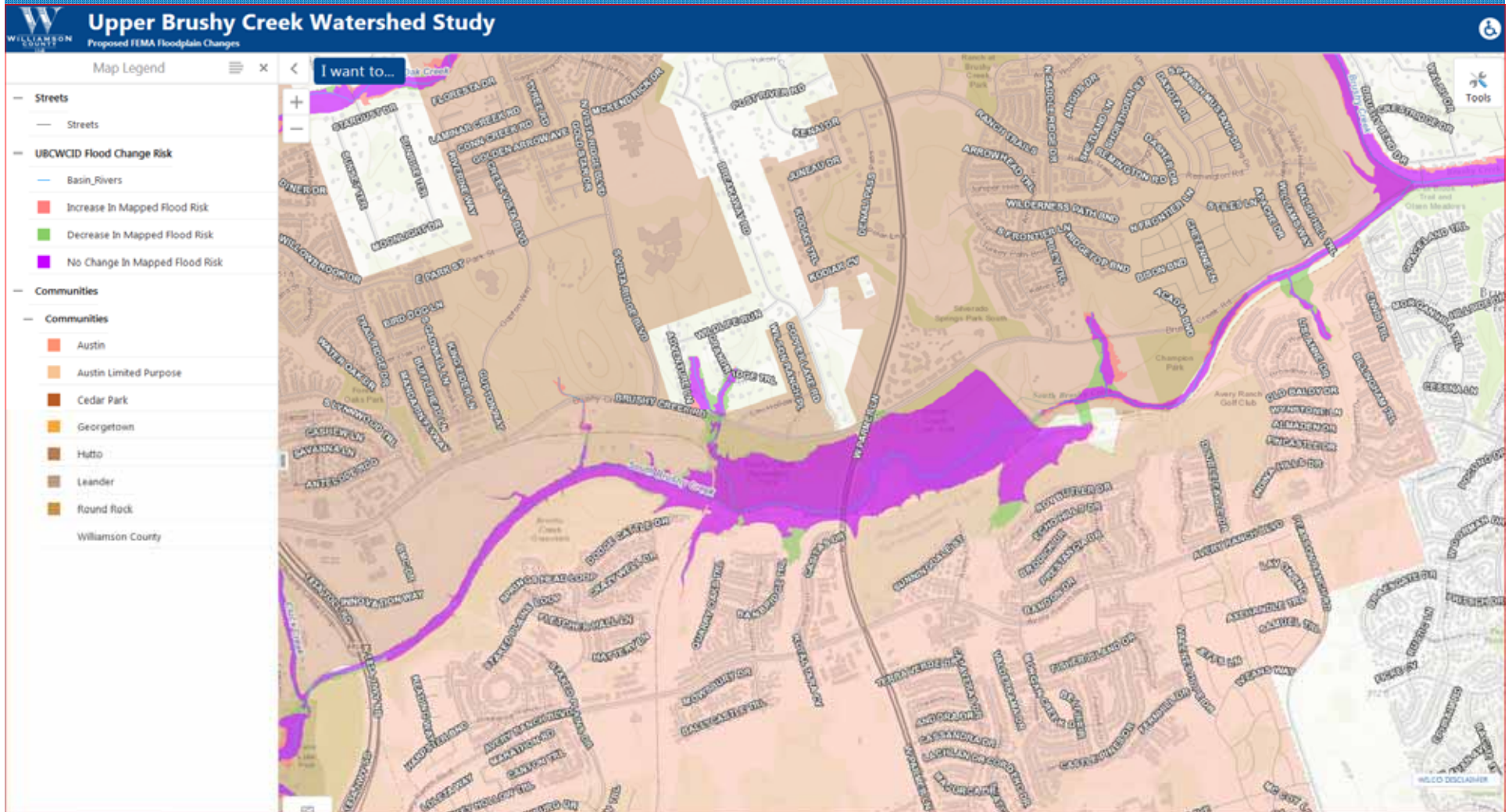
# Creeks Studied in City of Austin Limits

- East to West: From Anderson Mill / US 183 to Mopac / IH 35
- South to North: County Line to South Brushy Creek
- Lake, Rattan, Davis Springs, South Brushy, and Buttercup Creeks



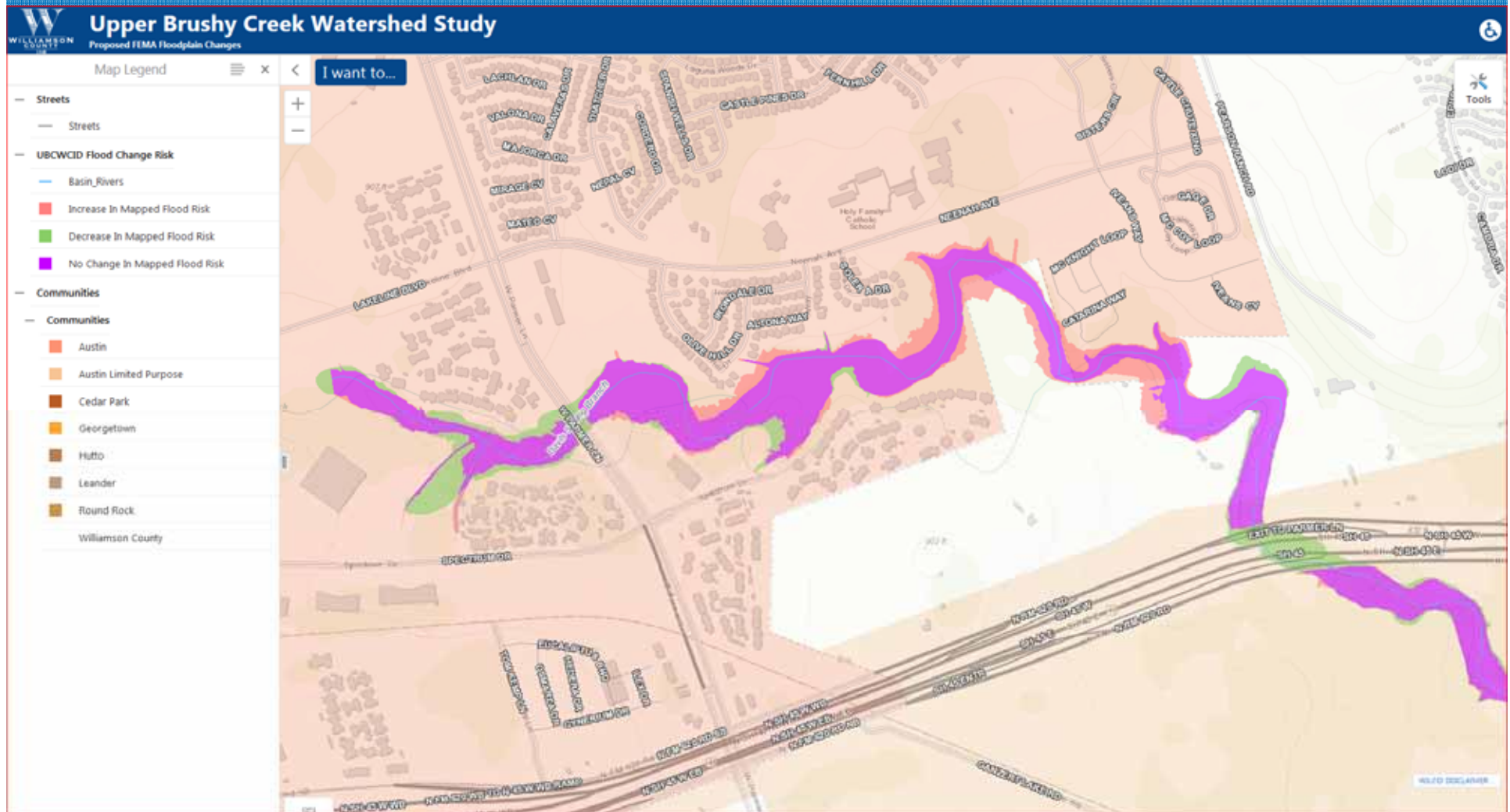


# South Brushy Creek (Avery Ranch Area)

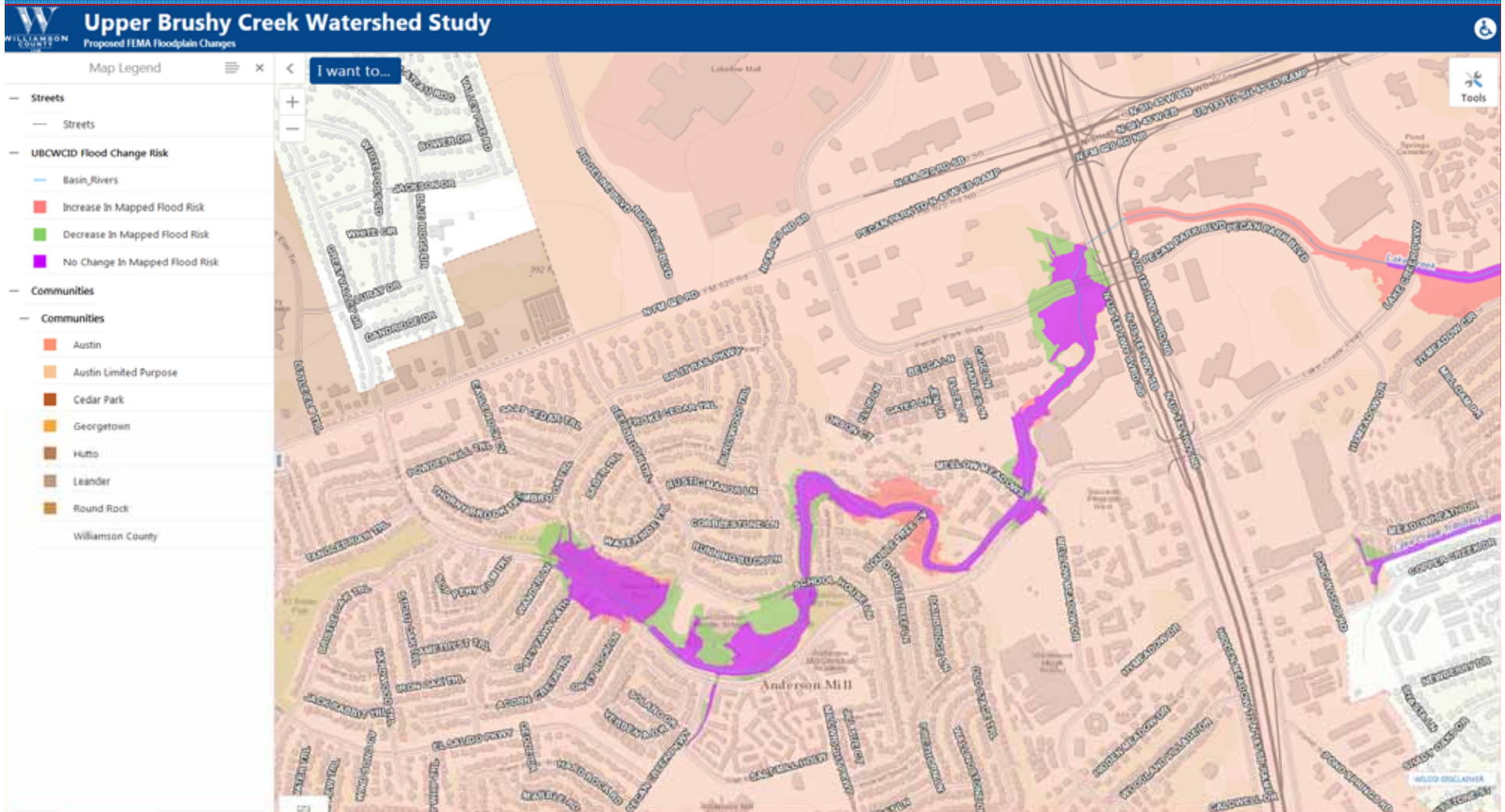




# Davis Springs Branch (Neenah Avenue area)

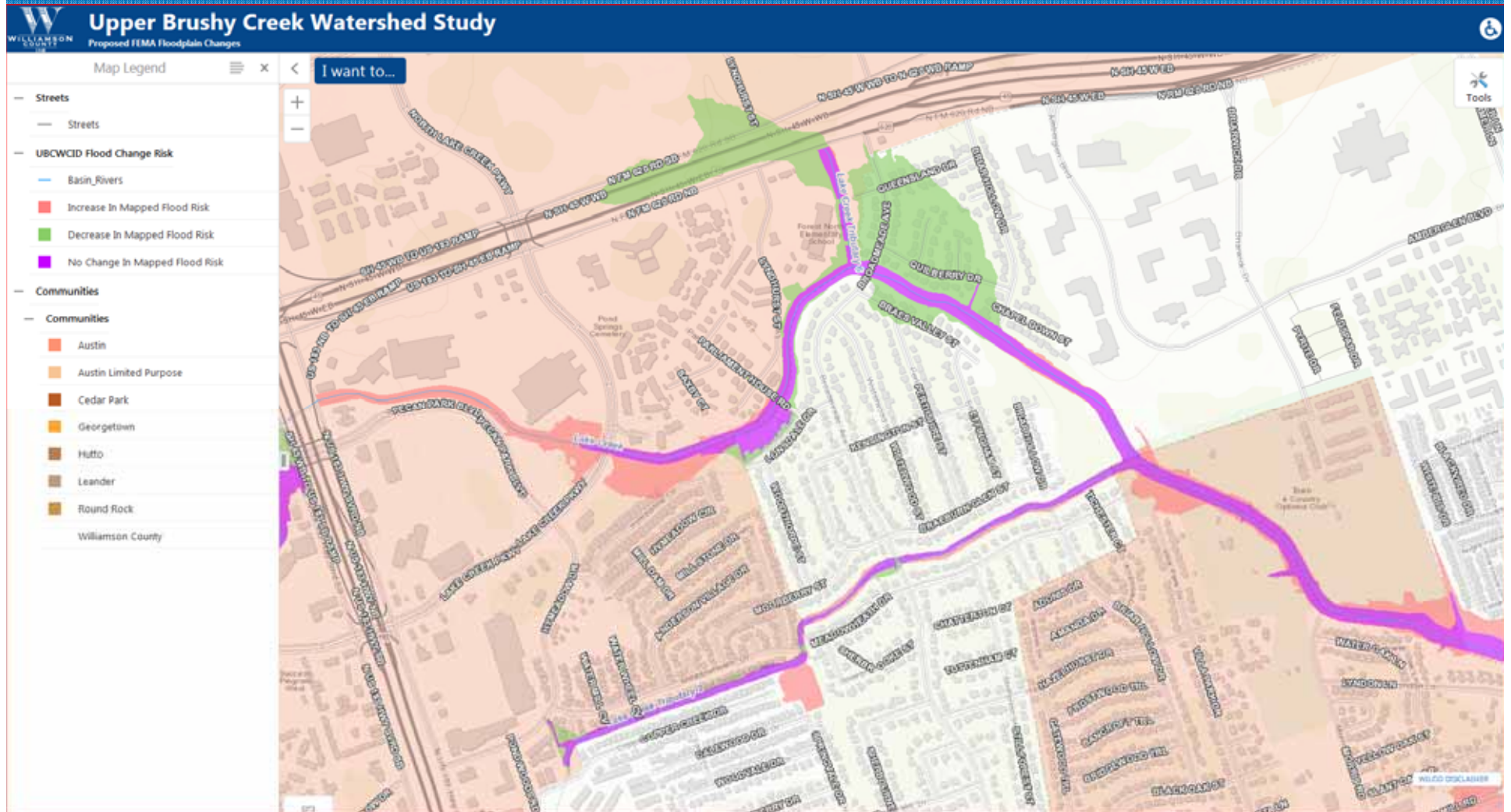


# Lake Creek West of Highway 183

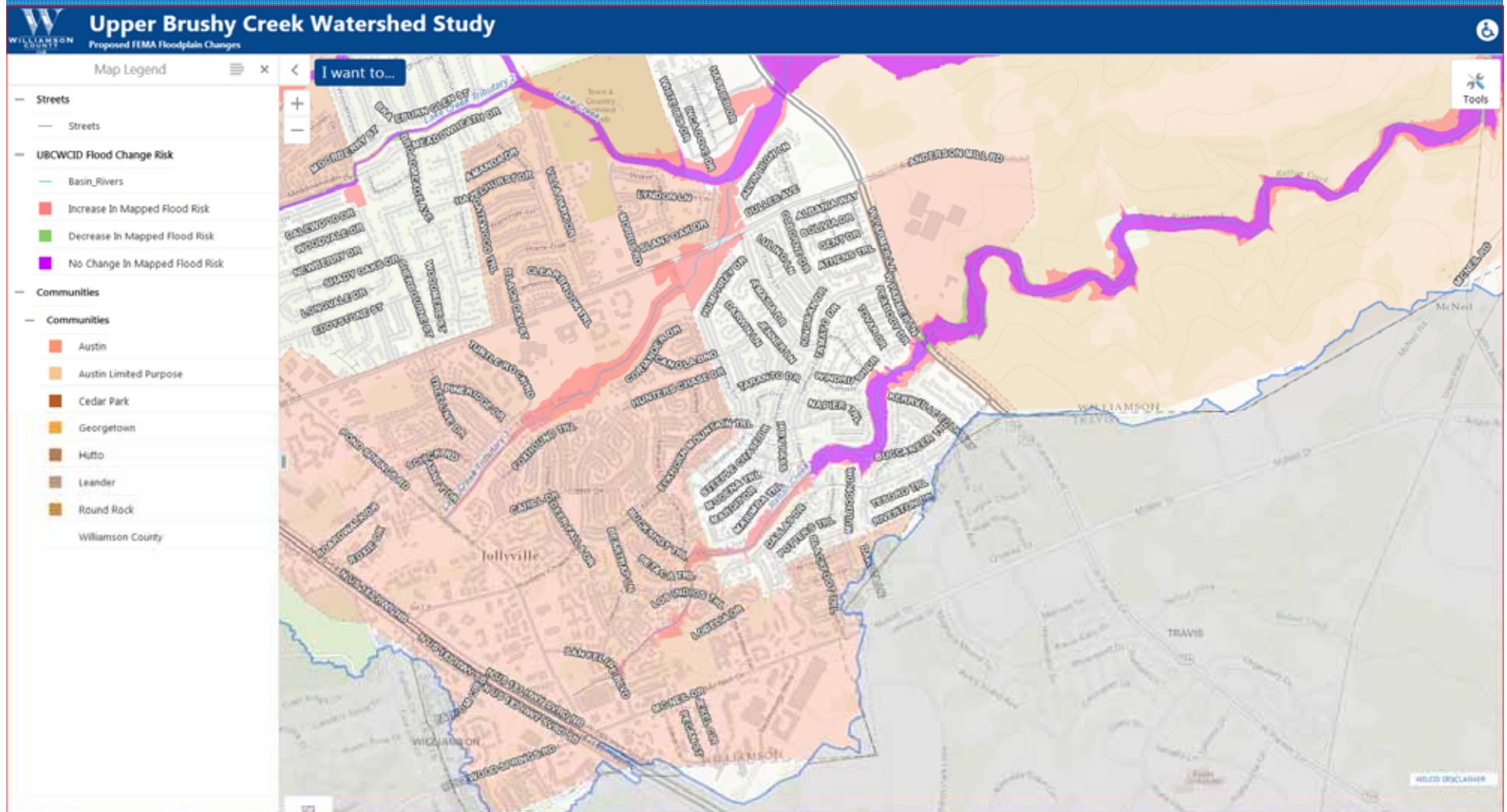




# Lake Creek East of Highway 183



# Lake Creek and Rattan Creek Tributaries

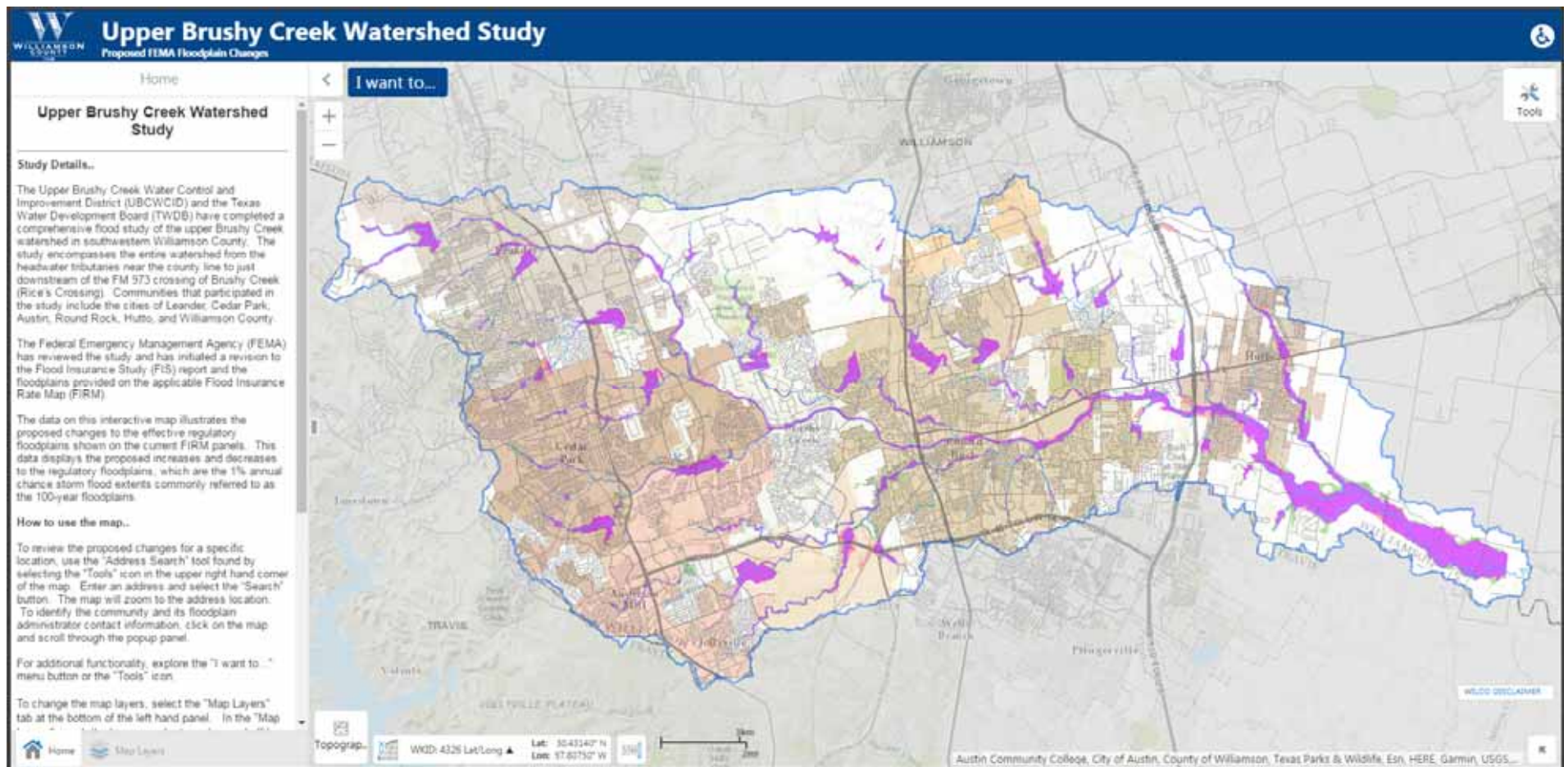




# Floodplain Changes Web Map

<http://austintexas.gov/departments/upper-brushy-creek-floodplain-study>

Click on map in middle of page or go directly to  
<https://gis.wilco.org/maps/?viewer=study>





# Preliminary FEMA FIRM Maps

## RiskMAP6.com

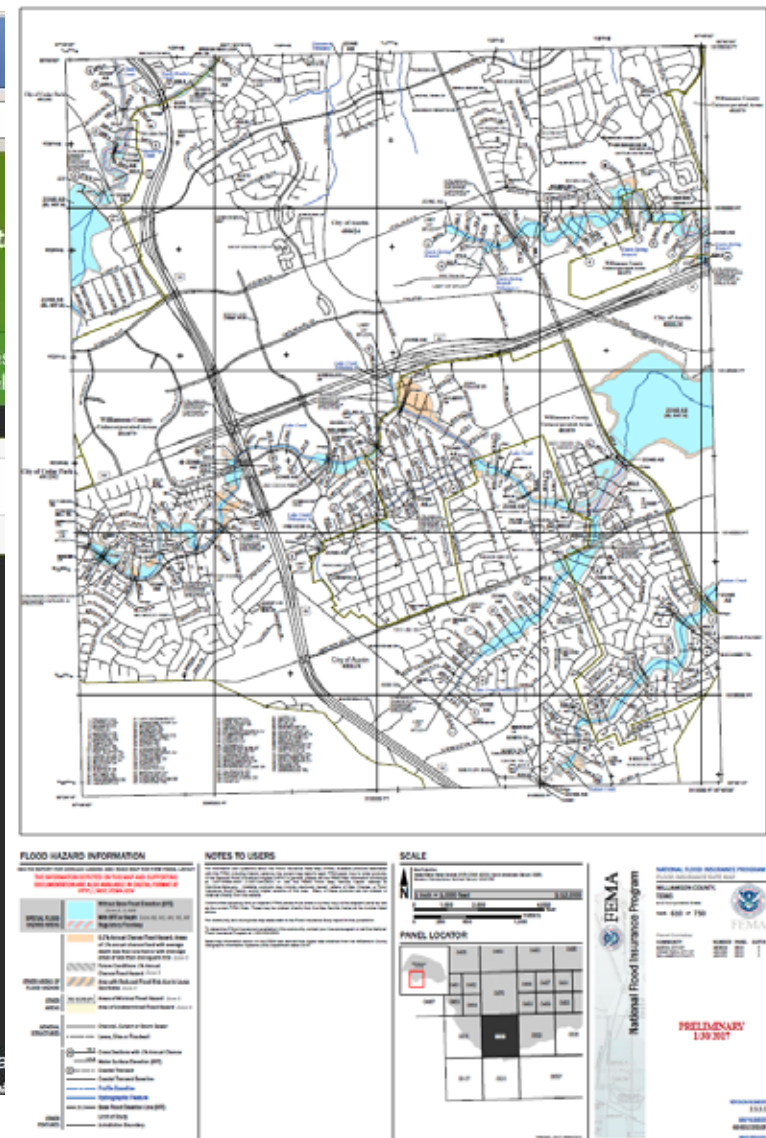
The screenshot shows the RiskMAP6.com website. The header includes the site name and a navigation menu with links: Home, What is Risk MAP?, The Risk MAP Process Path, Communities: Know the Risk, Take Action: Empowering Communities, Contact Us, and Resources. A 'Subscribe' section prompts users to sign up for 'The Voice' newsletter. Below this are buttons for 'Find Your Preliminary Flood Maps' and 'Find Your Effective Flood Map'. A sidebar on the left lists 'Upcoming Events' and 'Steps to Resilience' with icons for each step: Watershed Selected for Discovery, Discovery, Project Area Selection, Project Kick-off Meeting, Flood Risk Review Meeting, and Resilience Meeting. The main content area features a 'Welcome to RiskMAP6.com' message and a paragraph explaining the program's purpose: 'Thank you for visiting RiskMAP6.com. Risk MAP stands for Risk Mapping, Assessment and Planning, which is a nationwide program developed by FEMA to work together with States, Tribes, and local communities in building an understanding of a complete picture of their natural hazard risk. An informed public is empowered to take actions to reduce their flood risk.'

### Welcome to RiskMAP6.com

Thank you for visiting RiskMAP6.com. Risk MAP stands for Risk Mapping, Assessment and Planning, which is a nationwide program developed by FEMA to work together with States, Tribes, and local communities in building an understanding of a complete picture of their natural hazard risk. An informed public is empowered to take actions to reduce their flood risk.

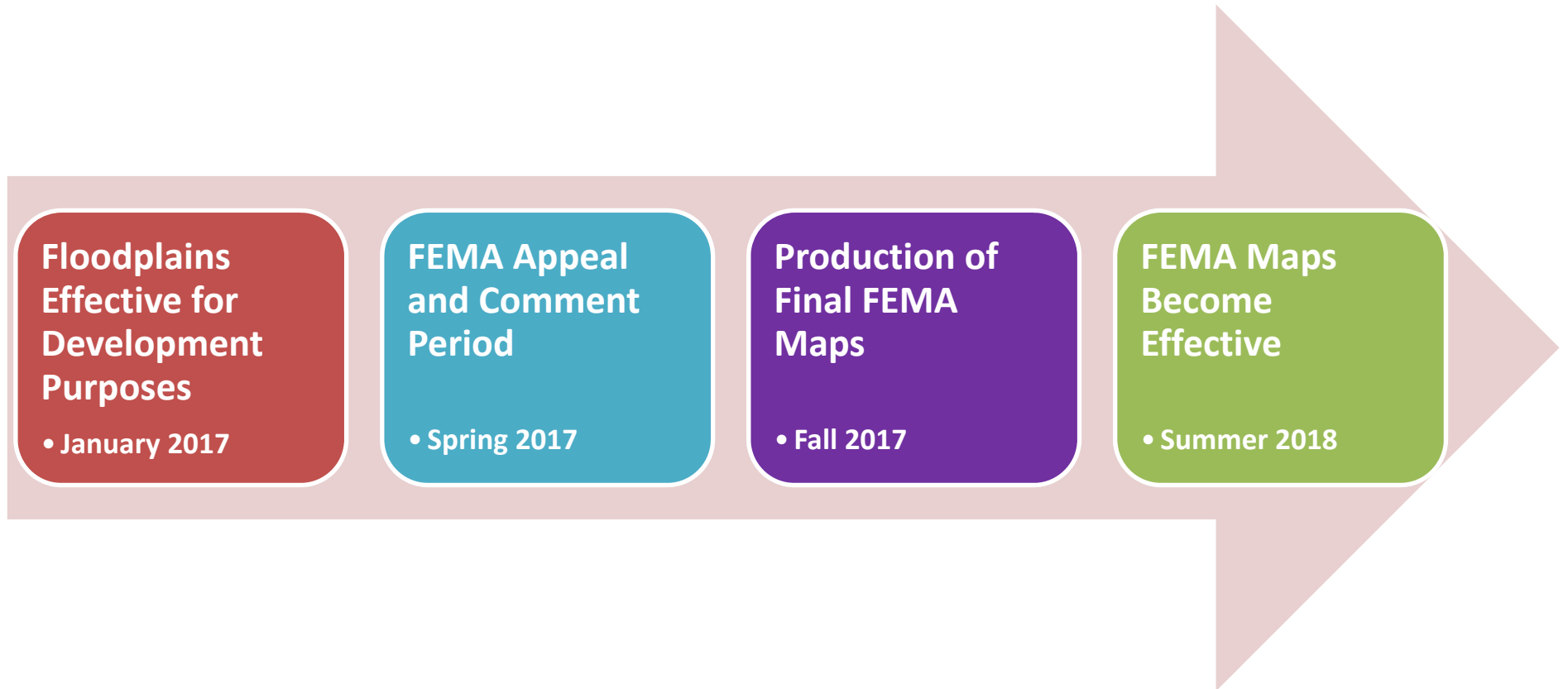
FEMA Region 6 covers a five state area: Arkansas, Louisiana, New Mexico, Oklahoma and Texas. Find out more about Risk MAP and the Risk MAP Process Path for Region 6 through this website. Also, sign up for our bi-annual FEMA Region 6 Risk MAP newsletter, "The Voice", through this website. Previous issues are also available under the Resources tab.

If your community is currently involved in a Risk MAP study, inform...





# Timeline for New FEMA Maps



# How you may be affected

- Goal: Understand flood risk
  - Public safety
- Flood safety and preparedness
- Flood insurance
- Development rules





# Flood Safety & Preparedness

## Learn...

*... Flooding can be deadly. Learn where flooding may occur.*

[www.ATXFloodPro.com](http://www.ATXFloodPro.com)

[www.ATXFloods.com](http://www.ATXFloods.com)

[www.ATXHydromet.com](http://www.ATXHydromet.com)

## Plan...

*... Make an emergency plan and kit.*

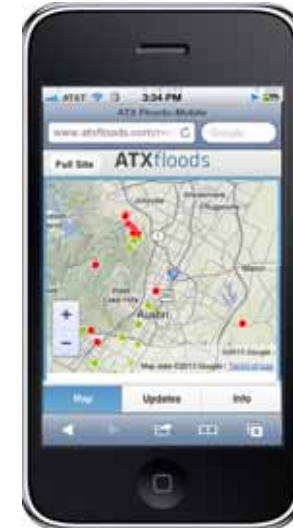
[www.austintexas.gov/departments/](http://www.austintexas.gov/departments/preparedness)

[preparedness](http://www.austintexas.gov/departments/preparedness)

*... Consider purchasing flood insurance.*

## Live...

*... Flooding can have devastating effects on families and the community.*



# Flood Insurance



## Average Austin Flood Insurance Claim Value is \$26,700

- *Most homeowners and renters policies do not cover flood damages.*
- *FEMA has a new type of policy designed to ease homeowners newly mapped into the floodplain into the program.*
- *Talk to your insurance agent to get a quote for flood insurance.*
- *Find an insurance agent or learn more at [www.FloodSmart.gov](http://www.FloodSmart.gov)*



# Regulations and Development



- Stricter permit regulations apply for any building, remodeling, construction or other development and repairs on properties in the floodplain.
- This minimizes flooding impacts to the community and the development.
- The cost of Flood Risk is shared by everyone in the community



# Questions?

City of Austin  
Watershed Protection Department

Floodplain Office  
512-974-2843

[FloodPro@austintexas.gov](mailto:FloodPro@austintexas.gov)

<http://austintexas.gov/floodplainchanges>

