



Whispering Valley and West Cow Path Flood Risk Reduction Project



Agenda

- Introductions
- Presentation
- Questions



← **Localized Flooding**
Occurs away from creeks.

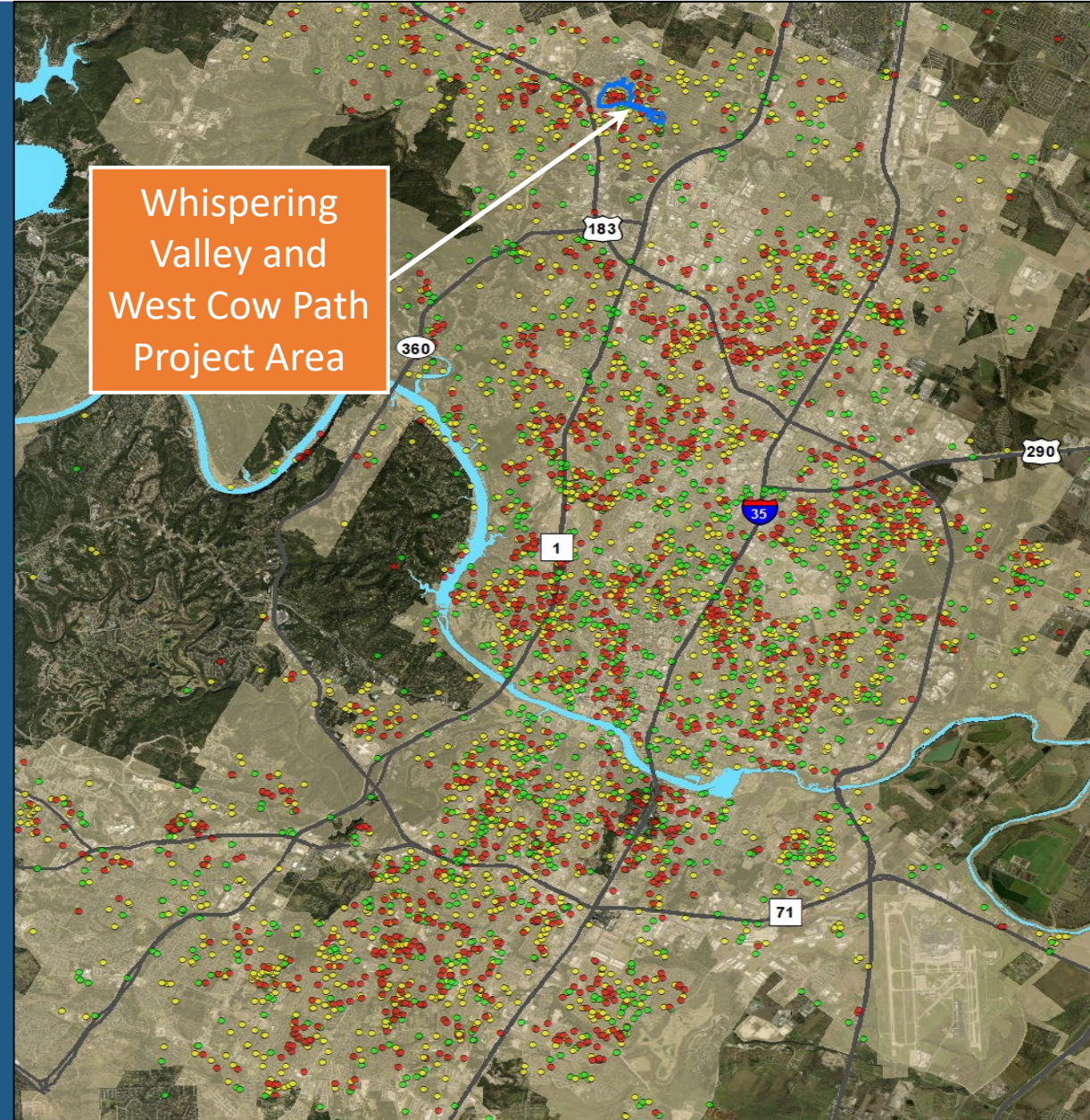
Creek Flooding →

Occurs when a creek rises over its banks.



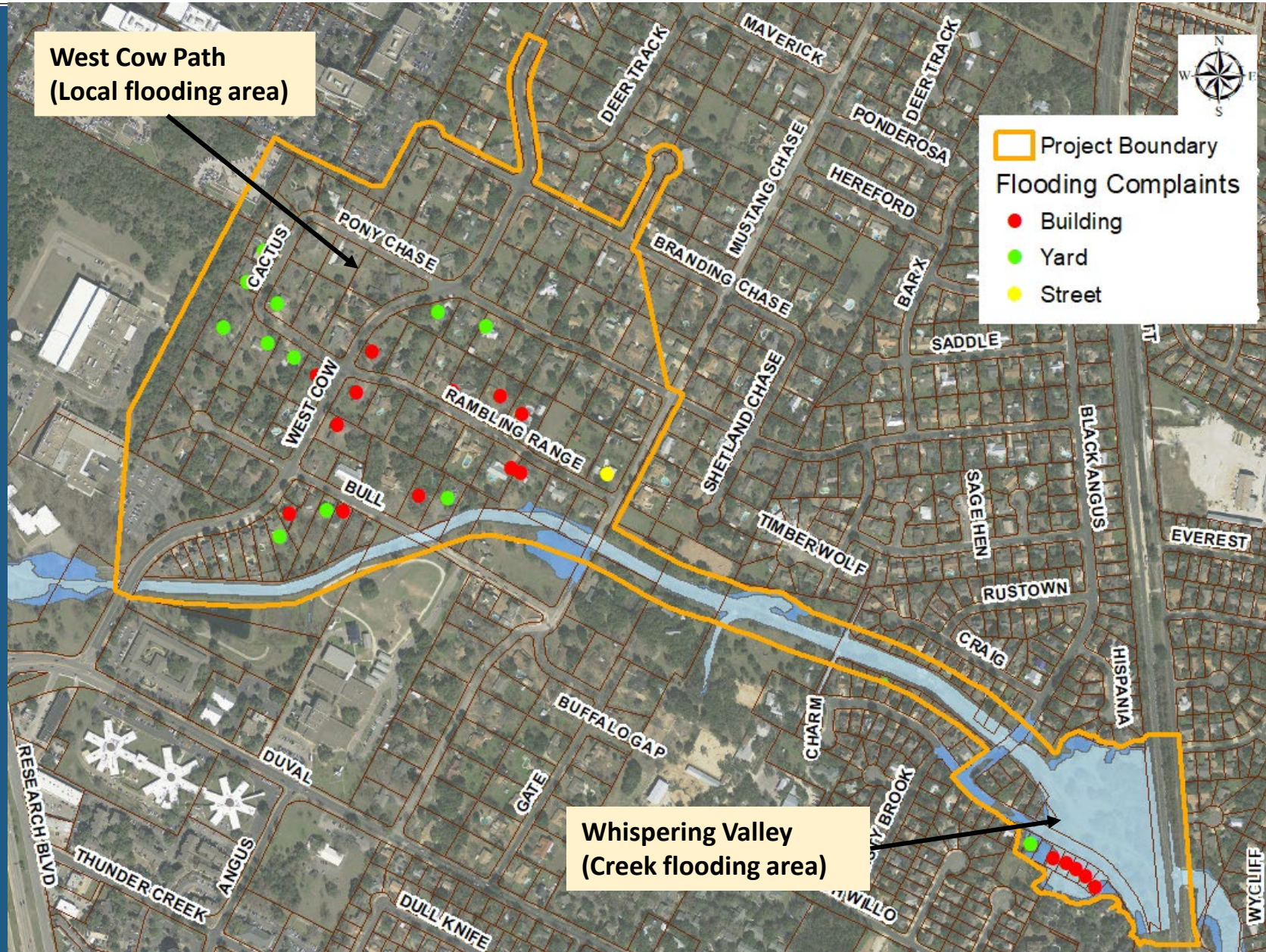
Localized Flooding Citywide

- **6,562 Total Complaints**
 - 2,289 Buildings
 - 2,608 Yards
 - 1,665 Streets
- **Neighborhoods built before the 1980s tend to have more drainage problems**
- **No quick or easy solution**



Whispering Valley and West Cow Path Flood Risk Reduction Project Area

- Located in northwest Austin
- West Cow Path – Local flooding area
- Whispering Valley – Creek flooding area



West Cow Path Flooding

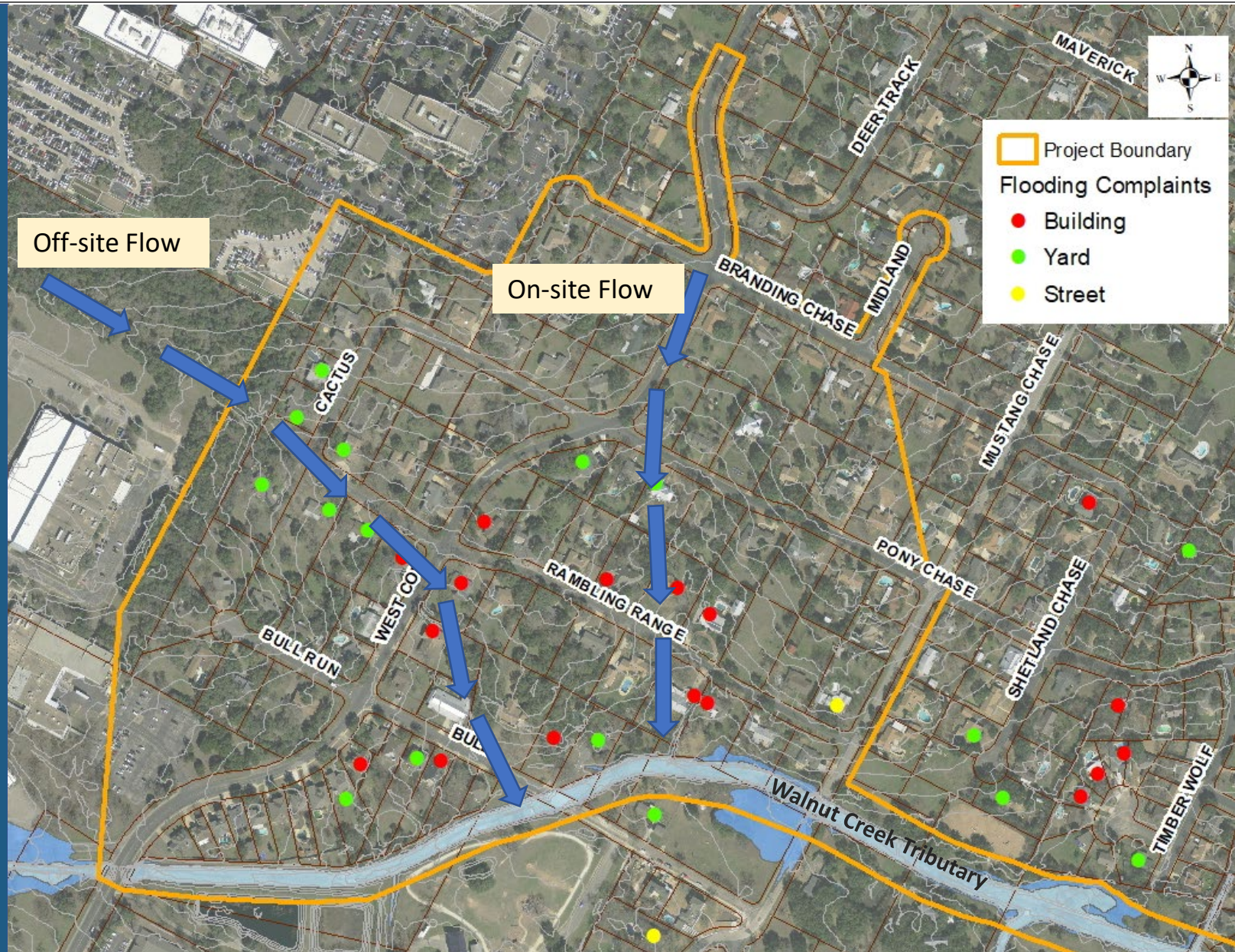
➤ Local Flooding Complaints

- 12 buildings
- 11 yards
- 1 street

➤ Existing infrastructure - roadside ditches with marginal capacity

➤ Two sources of flooding

- Off-site flow
- On-site flow



West Cow Path Drainage Improvements

- On-site flow

- Curb and Gutter with storm drain infrastructure
- Three separate networks
- Outfall to the creek

- Off-site flow

- Upsize and extend pipe along Rambling Range west



Components of a Storm Drain System

1. Inlets and curbs capture rainwater.



2. Underground pipes carry the water.

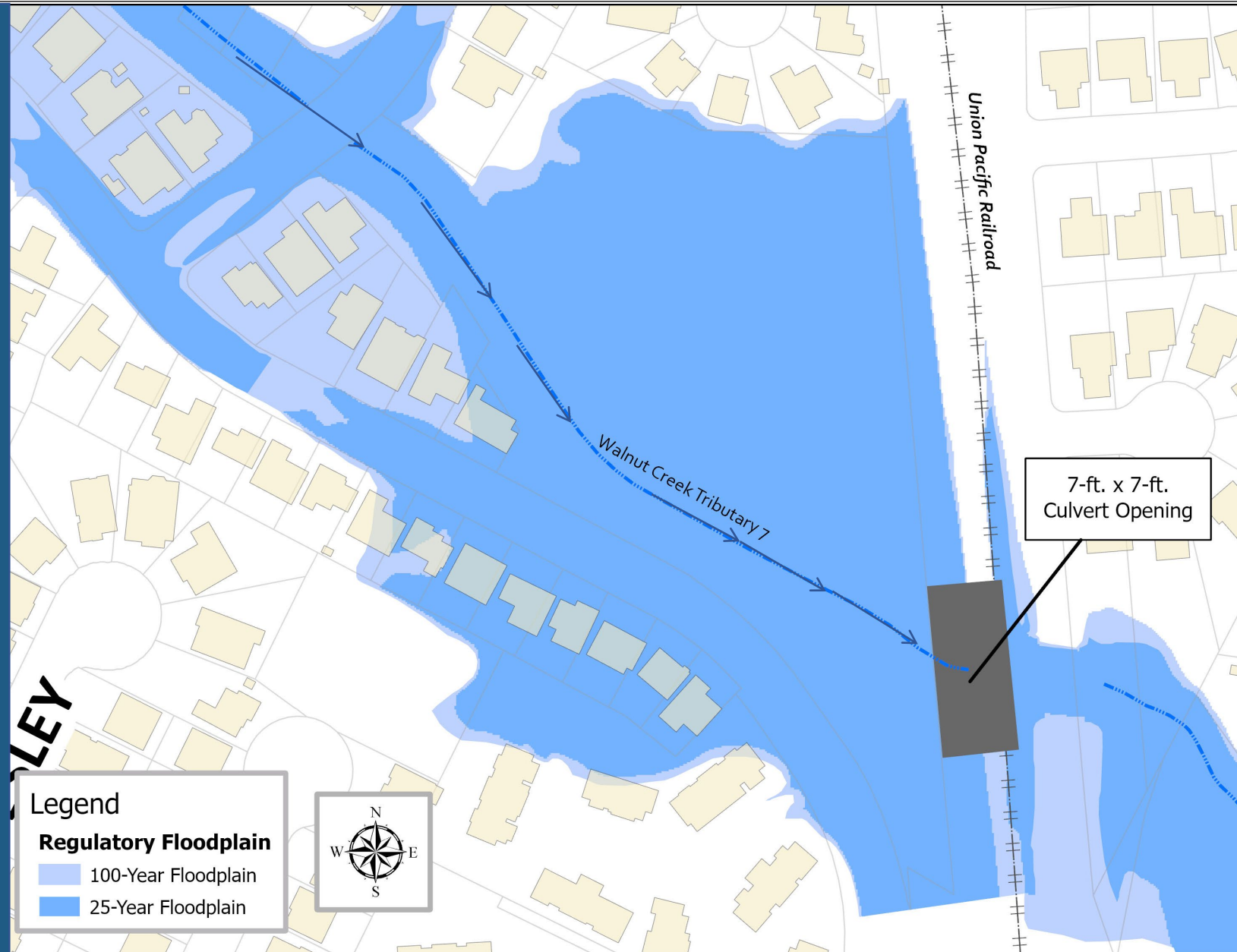


3. Rainwater is released into a creek at the outfall. Sometimes it goes to a water quality or detention pond first.



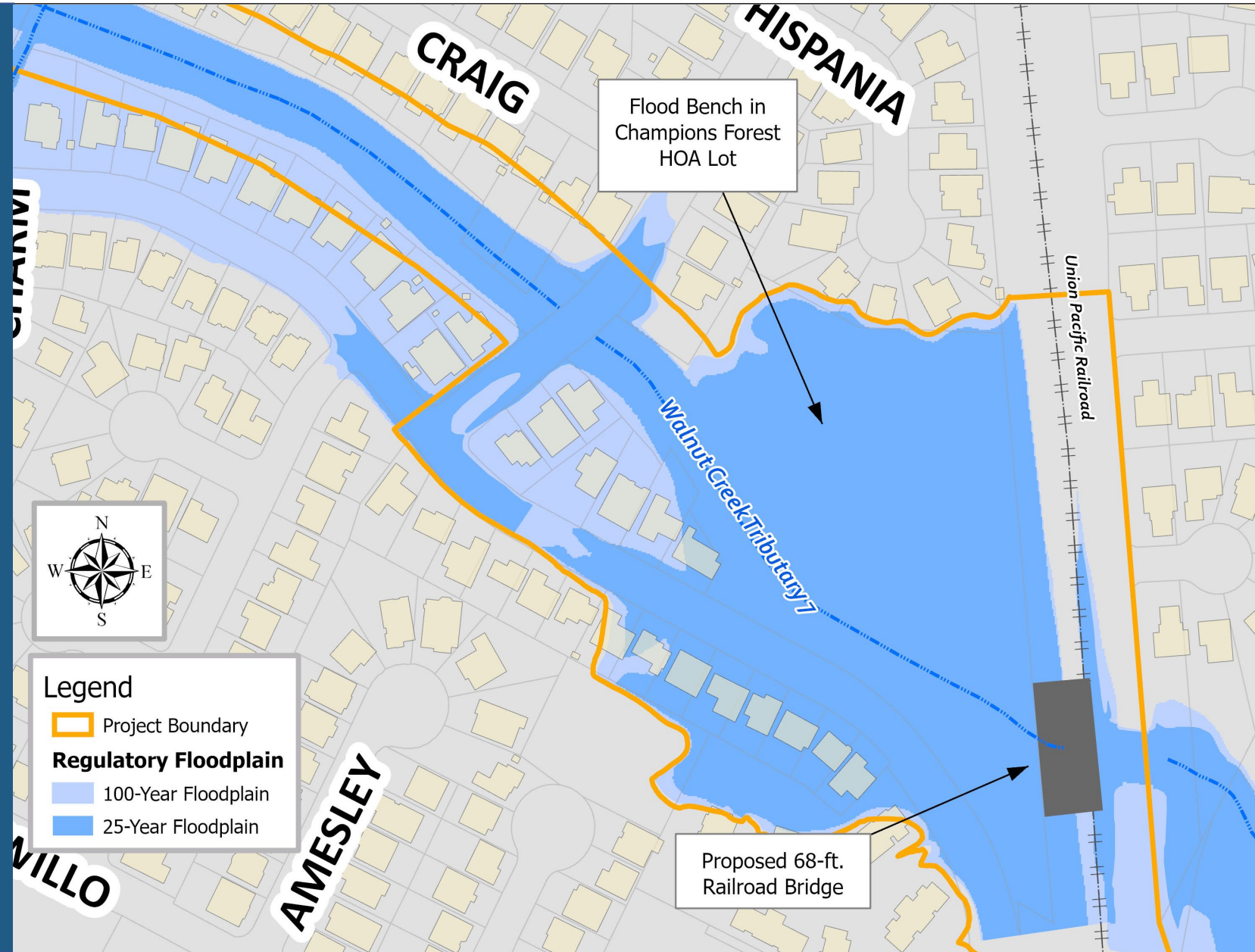
Whispering Valley Flooding

- Union Pacific Railroad (UPRR) crossing
 - 7-ft x 7-ft opening
 - Less than 2-year storm capacity (4.1 inches in 24-hrs)
- Several structures in the floodplain



Whispering Valley Improvements


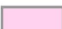
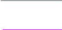
- Proposed 68-ft bridge upgrade to culvert by UPRR
- Flood bench in the Champions Forest HOA lot



Offsite Flow Intake

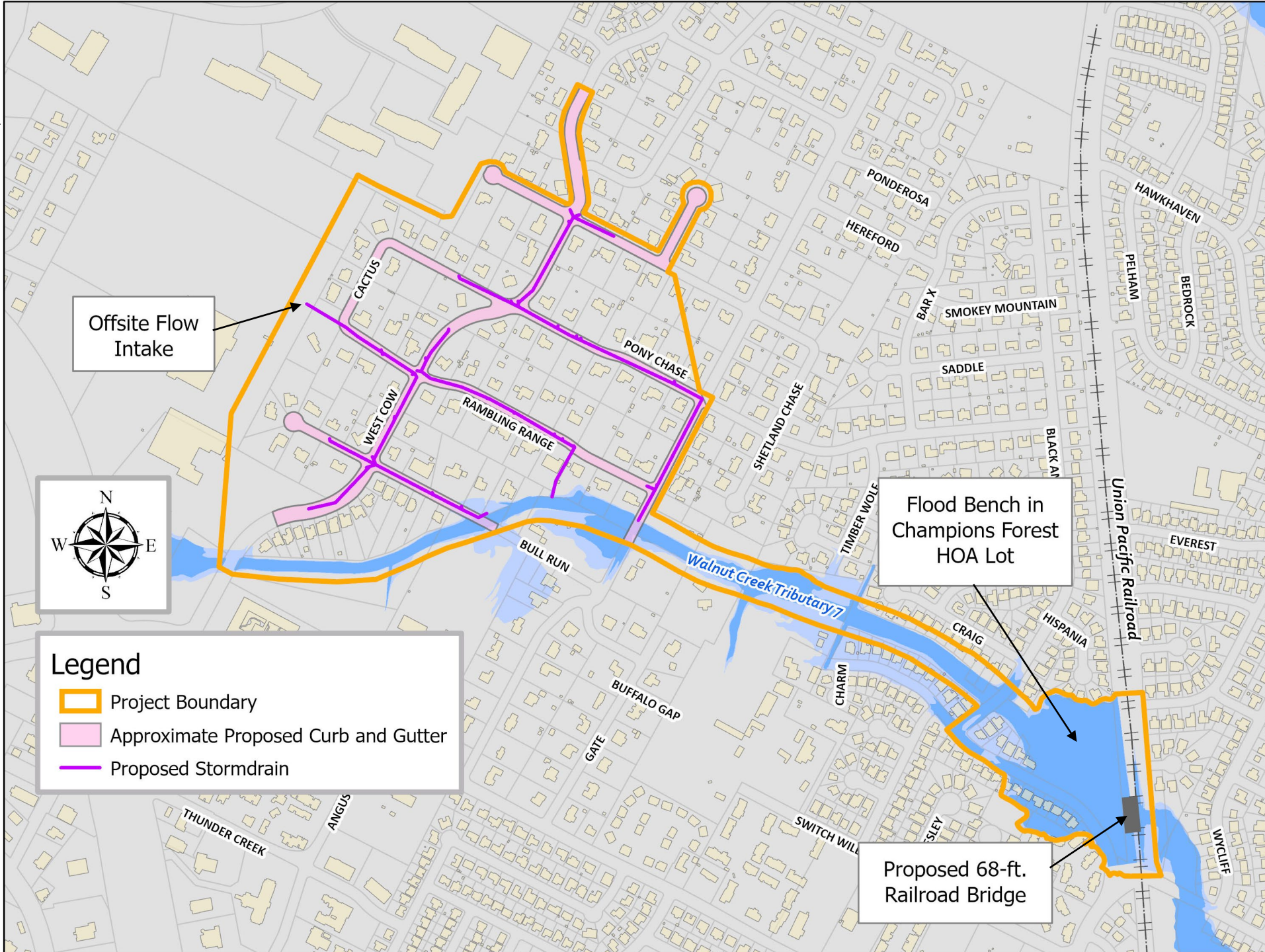


Legend

-  Project Boundary
-  Approximate Proposed Curb and Gutter
-  Proposed Stormdrain

Flood Bench in
Champions Forest
HOA Lot

Proposed 68-ft.
Railroad Bridge



Project Update

- **Whispering Valley and West Cow Path – Divided into two separate projects**
- **Whispering valley**
 - Design phase
 - Estimated construction start date Summer 2023
 - Coordination with Union Pacific Rail-Road (UPRR)
- **West Cow Path**
 - Design phase to start after agreement is established
 - Coordination with 3M redevelopment
- **Project web site** <https://www.austintexas.gov/whisperingvalley>

Thank you!

Questions?

Rupali Sabnis, P.E., CFM
Rupali.Sabnis@austintexas.gov
(512)-974-3375

Octaviano, Dario
Dario.Octaviano@austintexas.gov
(512)-974-7607

