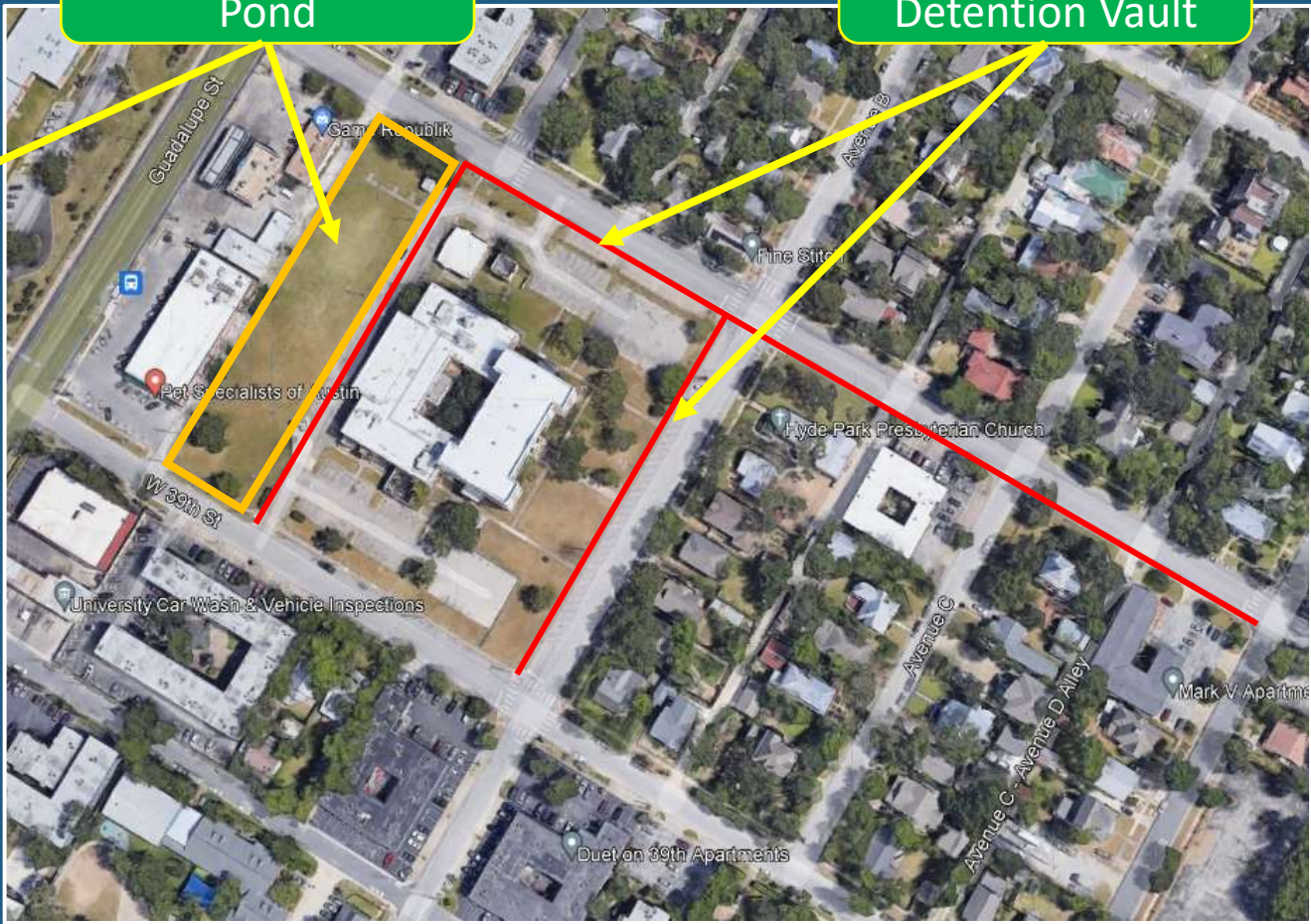


Baker Center Detention Pond



Surface Detention Pond

Underground Detention Vault

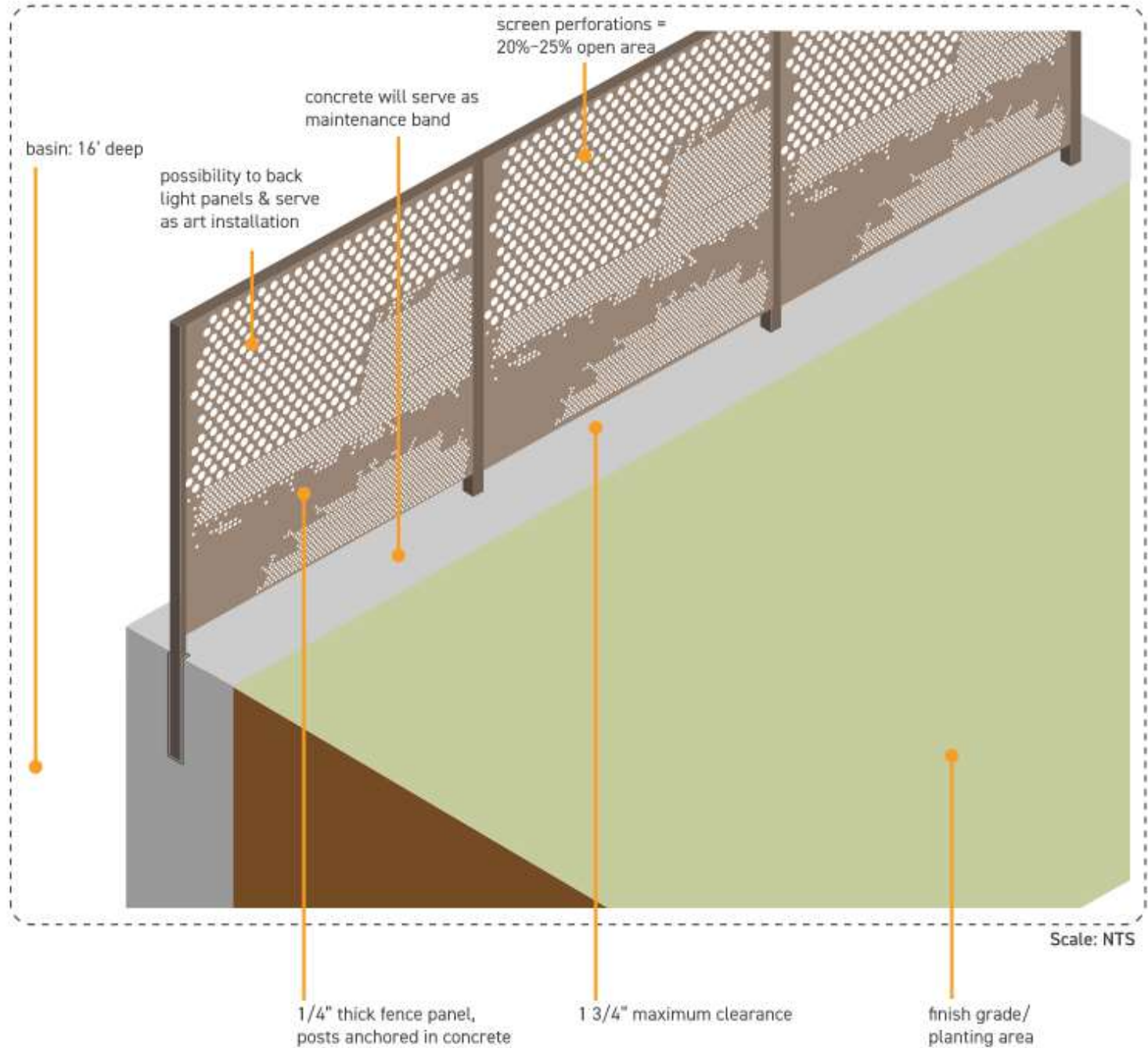


OPTION 1:

NATURAL PROCESS CONCEPT

This concept draws inspiration from the soil profile and movement of water, natural layers in the earth being abstracted into varying perforations.

This concept would be constructed of perforated steel panels.



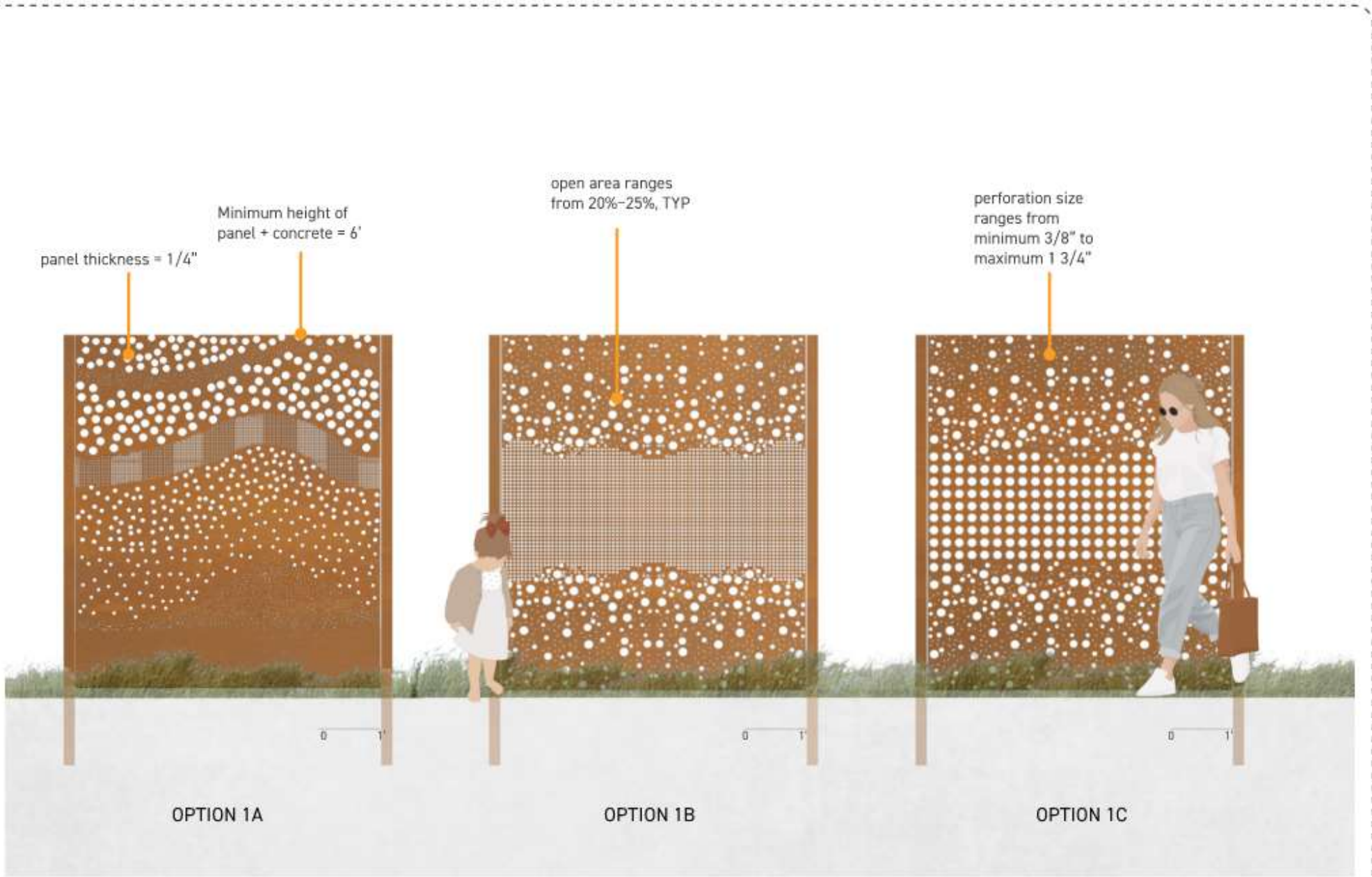
OPTION 1:

NATURAL PROCESS CONCEPT

This concept draws inspiration from the soil profile and movement of water, natural layers in the earth being abstracted into varying perforations.

NOTE: 3 separate panel options are shown here to illustrate perforation options, but the finalized design will consist of continuous panels without gaps to ensure public safety.

PANEL ELEVATION OPTIONS



OPTION 2:

HYDE PARK REFERENCE CONCEPT

This concept draws inspiration from the Hyde Park Neighborhood and its architecture. Residential picket fences and art deco forms lend the basis for this design.

This concept would be constructed of weathering steel posts or reinforced concrete posts.

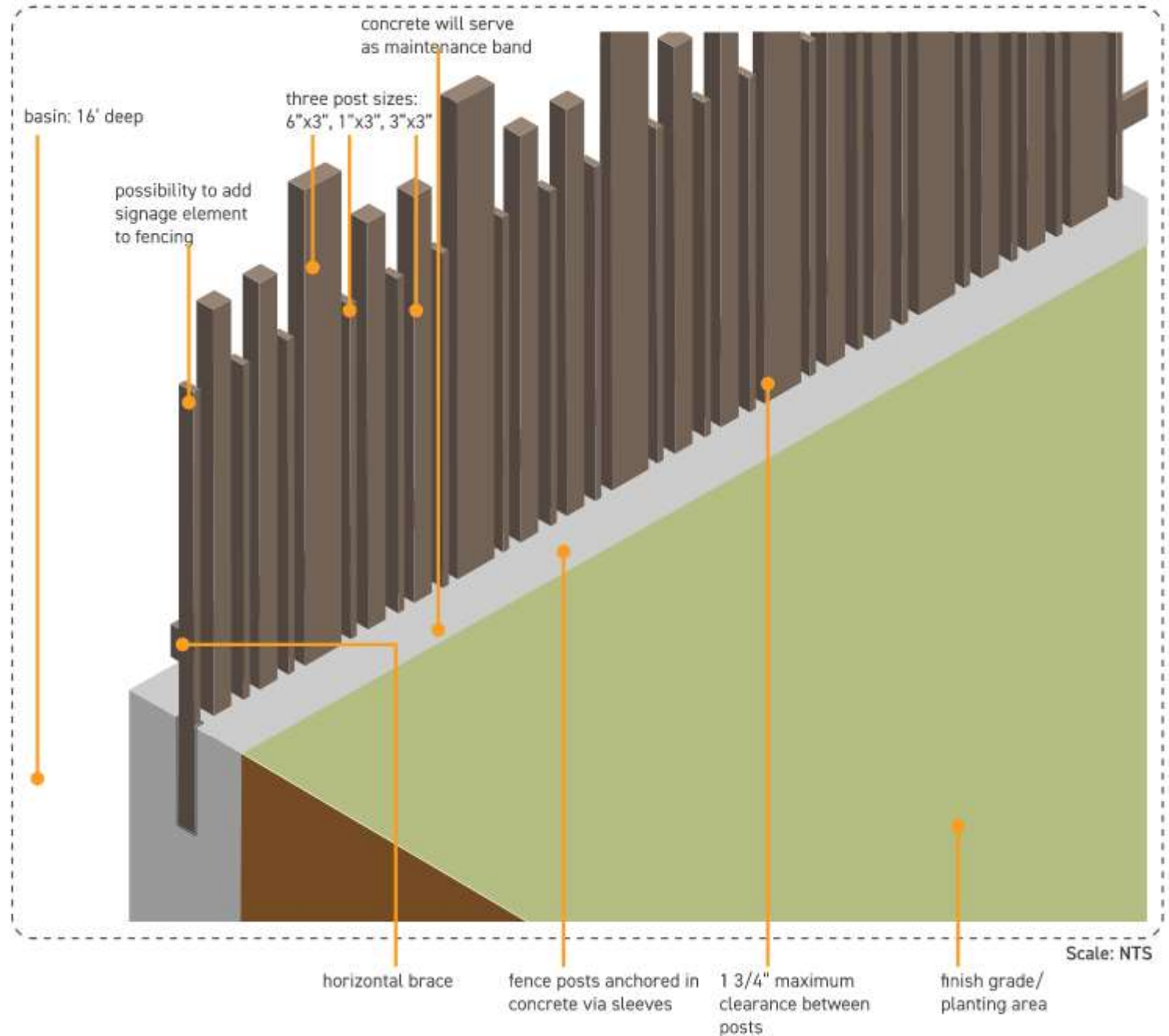


Hyde Park street



Baker Center architecture

Baker Center Detention Pond



OPTION 3:

STANDARD METAL FENCE

A standard metal fence such as Ameristar Wireworks fence or an approved equal would utilize a pre-fabricated metal fence that would meet safety requirements at a lower cost than the previous custom fencing options.



Ameristar Wireworks Fence

anti-climb welded
wire mesh

powder-coated finish



Ameristar Wireworks Fence

minimum 6' height