

ZILKER BOTANICAL GARDEN STREAM RESTORATION PROJECT

ANNOTATED PLANT LIST

Garden designed and installed by:

Environmental Survey Consulting

4602 Placid Place - Austin, Texas 78731

(512) 458-8531 - www.envirosurvey.com

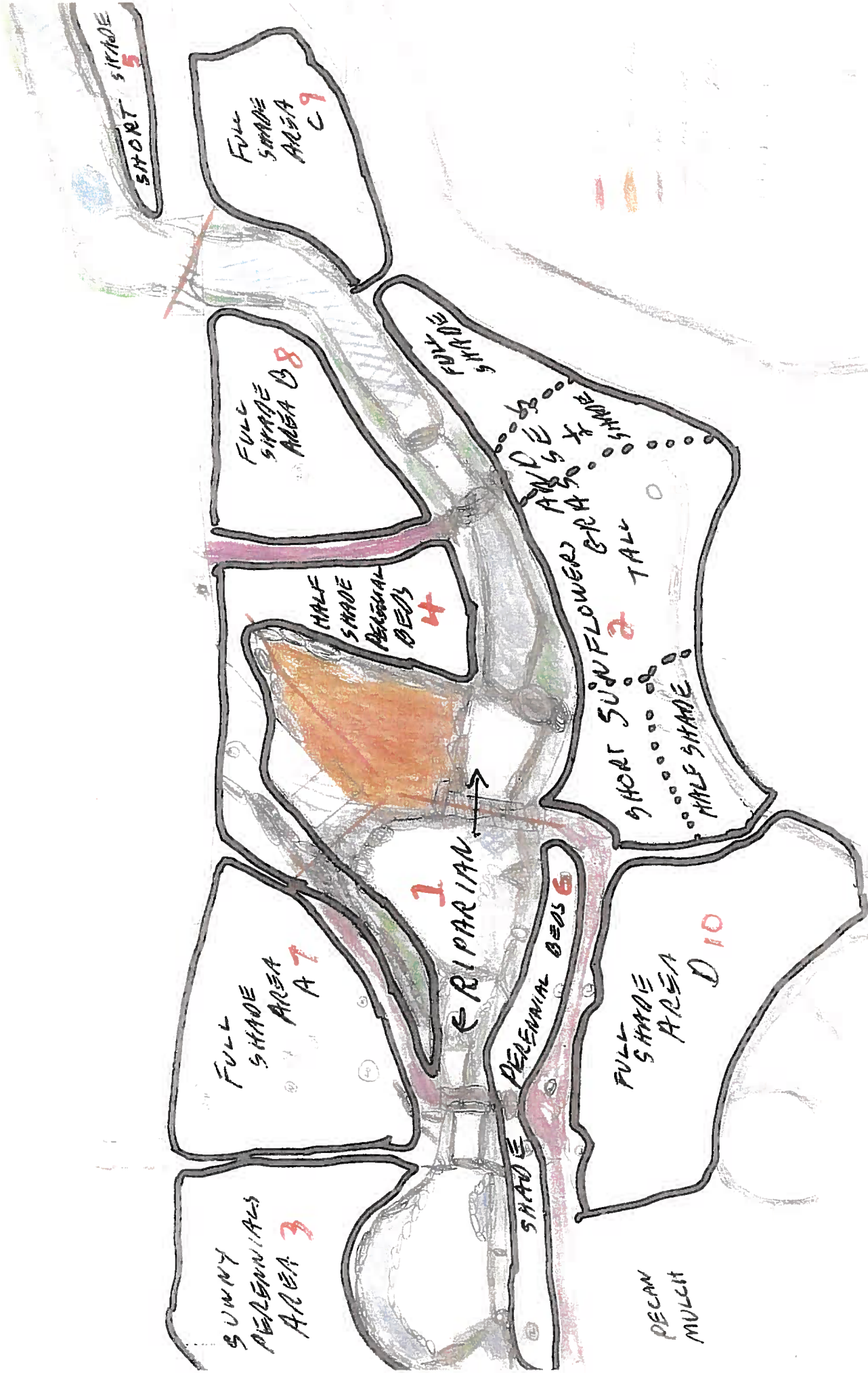
Principal Designer: David Mahler, Senior Ecologist and Vice President

LEGEND

Plant Form	Definition
C-S YUC	Yucca and yucca-like (incl agave, nolina)
FERN	Fern
FERN A	Fern ally
GR PER	Grass perennial
H AN	Herbaceous annual forb
H AN/BI/PER	Herbaceous annual, biennial or perennial forb
H AN/PER	Herbaceous annual or perennial forb
H PER	Herbaceous perennial forb
VN H PER DEC	Vine herbaceous perennial deciduous
W SHR DEC	Woody shrub deciduous
W SHR EV	Woody shrub evergreen
W SMT DEC	Woody small tree deciduous
W SUB AN/PER DEC	Woody subshrub annual/perennial deciduous
W SUB PER DEC	Woody subshrub perennial deciduous
W TR DEC	Woody tree deciduous
W TR EV	Woody tree evergreen

A	Non-Vascular Plants without vascular system (xylem and phloem)
B	Ferns and Fern Allies – Vascular plants with leaves (fronds), roots and sometimes true stems or trunks
C	Gymnosperms – Woody vascular seed plants with naked seeds not enclosed in an ovary
Angiosperm	Seed—bearing flowering plant, seeds enclosed in an ovary, which develops into a fruit
D	Monocotyledon (Monocot) – Angiosperm with single embryonic leaf, parallel veins, flower in multiples of three, fibrous roots
E	Dicotyledon (Dicot) – Angiosperm with two embryonic leaves, typically broad, stalked leaves, netlike veins

✓	On-Site = Existed on-site before stream restoration
✓	Riparian = Grows close to or in water



RIPARIAN GARDEN PLANTING AREAS
 PRELIMINARY, ESC MAR 29, 2017 DL

Group	Family	Family Common Name	Genus	Species	Common Name
	FERN AND FERN ALLIES				
B	Equisetaceae	Horsetail	<i>Equisetum</i>	<i>laevigatum</i>	smooth horsetail
B	Marsileaceae	Water-Clover	<i>Marsilea</i>	<i>macropoda</i>	bigfoot water-clover
B	Pteridaceae	True Fern	<i>Adiantum</i>	<i>capillus-veneris</i>	maidenhair fern
B	Pteridaceae	Maidenhair Fern	<i>Astrolepis</i>	<i>sinuata</i>	wavy scaly cloakfern
B	Thelypteridaceae	Marsh Fern	<i>Thelypteris</i>	<i>kunthii</i>	shield fern
	ANGIOSPERMS: MONOCOTS				
D	Agavaceae	Agave	<i>Yucca</i>	<i>rupicola</i>	twistleaf yucca
D	Alismataceae	Water-Plantain	<i>Echinodorus</i>	<i>cordifolius</i>	creeping burthead
D	Alismataceae	Water-Plantain	<i>Sagittaria</i>	<i>lancifolia</i>	bulltongue arrowhead
D	Alismataceae	Water-Plantain	<i>Sagittaria</i>	<i>platyphylla</i>	delta arrowhead
D	Cannaceae	Canna	<i>Canna</i>	<i>flaccida</i>	canna
D	Commelinaceae	Spiderwort	<i>Tradescantia</i>	<i>gigantea</i>	giant spiderwort
D	Cyperaceae	Sedge	<i>Carex</i>	<i>blanda</i>	woodland sedge
D	Cyperaceae	Sedge	<i>Carex</i>	<i>emoryi</i>	emory sedge
D	Cyperaceae	Sedge	<i>Carex</i>	<i>perdentata</i>	Webberville sedge
D	Cyperaceae	Sedge	<i>Eleocharis</i>	<i>quadrangulata</i>	squarestem spikesedge
D	Cyperaceae	Sedge	<i>Eleocharis</i>	sp.	spikerush
D	Cyperaceae	Sedge	<i>Rhynchospora</i>	<i>colorata</i>	whitetop sedge
D	Hydrocharitaceae	Tape-Grass	<i>Vallisneria</i>	<i>americana</i>	American eelgrass
D	Iridaceae	Iris	<i>Iris</i>	<i>brevicaulis</i>	zigzag iris
D	Iridaceae	Iris	<i>Iris</i>	<i>fulva</i>	red flag iris
D	Juncaceae	Rush	<i>Juncus</i>	<i>effusus var. solutus</i>	softstem rush
D	Liliaceae	Lily	<i>Nolina</i>	<i>lindheimeriana</i>	devil's shoestring
D	Liliaceae	Lily	<i>Nolina</i>	<i>texana</i>	sacahuista
D	Marantaceae	Arrowroot	<i>Thalia</i>	<i>dealbata</i>	thalia
D	Najadaceae	Water-Nymph	<i>Najas</i>	<i>guadalupensis</i>	water-nymph
D	Poaceae	Grass	<i>Bouteloua</i>	<i>curtipendula</i>	sideoats grama
D	Poaceae	Grass	<i>Bouteloua</i>	<i>gracilis</i>	blue grama
D	Poaceae	Grass	<i>Chasmanthium</i>	<i>latifolium</i>	inland seaoats
D	Poaceae	Grass	<i>Chloris</i>	<i>verticillata</i>	tumble windmillgrass
D	Poaceae	Grass	<i>Muhlenbergia</i>	<i>lindheimeri</i>	big muhly
D	Poaceae	Grass	<i>Tripsacum</i>	<i>dactyloides</i>	eastern gamagrass
D	Pontederiaceae	Pickerelweed	<i>Heteranthera</i>	<i>dubia</i>	water stargrass
D	Pontederiaceae	Pickerelweed	<i>Pontederia</i>	<i>cordata</i>	pickerelweed
	ANGIOSPERMS: DICOTS				
E	Acanthaceae	Acanthus	<i>Anisacanthus</i>	<i>quadrifidus var. wrightii</i>	flame acanthus
E	Acanthaceae	Acanthus	<i>Justicia</i>	<i>americana</i>	water-willow
E	Acanthaceae	Acanthus	<i>Ruellia</i>	<i>humilis</i>	low ruellia
E	Apiaceae	Carrot	<i>Eryngium</i>	<i>yuccifolium</i>	button eryngo
E	Apiaceae	Carrot	<i>Hydrocotyle</i>	<i>umbellata</i>	umbrella water-penny
E	Aquifoliaceae	Holly	<i>Ilex</i>	<i>decidua</i>	deciduous yaupon
E	Aquifoliaceae	Holly	<i>Ilex</i>	<i>vomitorea</i>	yaupon
E	Asclepiadaceae	Milkweed	<i>Asclepias</i>	<i>capricornu</i>	American eelgrass
E	Asclepiadaceae	Milkweed	<i>Asclepias</i>	<i>incarnata</i>	swamp milkweed
E	Asclepiadaceae	Milkweed	<i>Asclepias</i>	<i>oenotheroides</i>	clustered milkweed

Form	Height	Bloom Color	BloomPrd	Sun	Water Needs	Riparian	On-Site
FERN AND FERN ALLIES							
FERN	1'-5'	spores	Spring	Full	Low	✓	
FERN	6"-10"	spores	usually Summer	Full to Shade	High	✓	
FERN	6-12"	spores	usually Summer	Shade	Med-High	✓	
FERN	1'	spores	usually Summer	Full to Part	Low		
FERN	1-3'	spores	usually Summer	Shade	Med	✓	
ANGIOSPERMS: MONOCOTS							
C-S YUC	1-3'	white	Spring Summer	Full to Part	Low		
H PER	1-3'	white	Spring Summer	Full to Part	High	✓	
H PER	1-3'	white	Summer	Full	High	✓	
H PER	1-3'	white	Summer	Part Shade	High	✓	
H PER	3-6'	yellow	Summer	Full	Med	✓	
H PER	1-3'	violet	Spring	Full to Part	Med		
GRM PER	1'-3'	green, brown	Spring Summer	Full to Shade	High		
GRM PER	1'-3'	green	Summer	Full to Shade	High	✓	
GRM PER	1'-3'	green, brown	Spring Summer	Full	High		
GRM PER	1-3'	brown	Spring Summer Fall	Full	High	✓	
H PER	1-3'	brown	Spring Summer Fall	Full to Part	High	✓	
GRM PER	1-3'	white	Summer	Full to Part	Med	✓	
GRM PER	1-2'	green	Spring Summer Fall	Full to Part	High	✓	
H PER	1-2'	purple, blue, white, yellow	Spring	Full to Shade	Med	✓	
H PER	1-3'	red, orange, yellow	Spring	Full to Part	High	✓	
GRM PER	3'-6'	green	Spring Summer Fall	Part Shade	High	✓	
C-S YUC	2'-6'	white	Spring Summer	Full to Part	Low		
C-S YUC	1-3'	white	Spring Summer	Part Shade	Low		
H PER	3'-6'	purple	Spring Summer Fall	Part Shade	High	✓	
H AN	floats, 2'	green	Summer	Full	High		
GRM PER	1'-3'	red, yellow	Fall	Full to Shade	Low		
GRM PER	1'-3'	yellow	Summer Fall	Full	Low		
GRM PER	3'-3.5'	grayish	Summer Fall	Shade	High		
GRM PER	1-3'	green	Spring Summer Fall	Full to Part	Low		
GRM PER	3'-6'	white	Spring Summer Fall	Full	Med	✓	
GRM PER	3'-6'	brown	Spring Summer	Part Shade	High	✓	
H AN/PER	water	yellow	Spring Summer	Full to Part	High	✓	
H PER	1-3'	purple	Summer Fall	Full to Part	High	✓	
ANGIOSPERMS: DICOTS							
W SHR DEC	3'-6'	red, orange	Summer Fall	Full to Part	Med		
H PER	1' - 3'	white, pink, purple, violet	Spring Summer Fall	Full to Part	High	✓	
H PER	1' - 3'	purple	Summer Fall	Part Shade	Low		
H PER	4'-6'	white	Spring Summer	Full	Med		
H PER	6"-1'	White	Spring Summer Fall	Full to Shade	Med-High	✓	
W SHR DEC	12'-15'	white	Spring	Full to Part	Med		
W SHR EV	12'-15'	white	Spring	Part Shade	Low		
H PER	1'-3'	yellow, green	Spring Summer	Part Shade	Med		
H PER	3-6'	pink, purple	Summer Fall	Full to Part	High	✓	
H PER	1'-3'	green	Spring Summer Fall	Full	Low		

Group	Family	Family Common Name	Genus	Species	Common Name
E	Asclepiadaceae	Milkweed	<i>Asclepias</i>	<i>texana</i>	Texas milkweed
E	Asclepiadaceae	Milkweed	<i>Asclepias</i>	<i>verticillata</i>	whorled milkweed
E	Asclepiadaceae	Milkweed	<i>Asclepias</i>	<i>viridis</i>	green milkweed
E	Asteraceae	Sunflower	<i>Ageratina</i>	<i>havanense</i>	shrubby boneset
E	Asteraceae	Sunflower	<i>Berlandiera</i>	<i>betonicifolia</i>	Texas green-eyes
E	Asteraceae	Sunflower	<i>Conoclinium</i>	<i>betonicifolium</i>	South Tx mist flower
E	Asteraceae	Sunflower	<i>Conoclinium</i>	<i>coelestinum</i>	blue mistflower
E	Asteraceae	Sunflower	<i>Conoclinium</i>	<i>greggii</i>	Gregg's mistflower
E	Asteraceae	Sunflower	<i>Echinacea</i>	<i>angustifolia</i>	coneflower
E	Asteraceae	Sunflower	<i>Echinacea</i>	<i>sanguinea</i>	sanguin purple coneflower
E	Asteraceae	Sunflower	<i>Engelmannia</i>	<i>peristenia</i>	Engelmann daisy
E	Asteraceae	Sunflower	<i>Helianthus</i>	<i>maximiliani</i>	Maximilian sunflower
E	Asteraceae	Sunflower	<i>Heterotheca</i>	<i>canescens</i>	gray goldenaster
E	Asteraceae	Sunflower	<i>Packera</i>	<i>obovata</i>	golden groundsel
E	Asteraceae	Sunflower	<i>Silphium</i>	<i>albiflorum</i>	white rosinweed
E	Asteraceae	Sunflower	<i>Silphium</i>	<i>laciniatum</i>	cut leaf silphium
E	Asteraceae	Sunflower	<i>Silphium</i>	<i>radula</i>	yellow silphium
E	Asteraceae	Sunflower	<i>Solidago</i>	<i>juliae</i>	Julia's goldenrod
E	Asteraceae	Sunflower	<i>Solidago</i>	<i>nemoralis</i>	gray goldenrod
E	Asteraceae	Sunflower	<i>m</i>	<i>sp</i>	Blanco River aster
E	Asteraceae	Sunflower	<i>m</i>	<i>oblongifolium</i>	fall aster
E	Asteraceae	Sunflower	<i>Verbesina</i>	<i>lindheimeri</i>	Lindheimer crownbeard
E	Asteraceae	Sunflower	<i>Vernonia</i>	<i>baldwinii</i>	Baldwin ironweed
E	Asteraceae	Sunflower	<i>Vernonia</i>	<i>hybrid</i>	ironweed hybrid
E	Asteraceae	Sunflower	<i>Viguiera</i>	<i>dentata</i>	Plateau Goldeneye
E	Asteraceae	Sunflower	<i>Viguiera</i>	<i>stenoloba</i>	resinbush
E	Asteraceae	Sunflower	<i>Wedelia</i>	<i>hispida</i>	hairy zexmenia
E	Campanulaceae	Bellflower	<i>Lobelia</i>	<i>cardinalis var cardinalis</i>	cardinal-flower
E	Caprifoliaceae	Honeysuckle	<i>Sambucus</i>	<i>nigra var. canadensis</i>	elderberry
E	Caprifoliaceae	Honeysuckle	<i>Viburnum</i>	<i>rufidulum</i>	rusty blackhaw
E	Ceratophyllaceae	Hornwort	<i>Ceratophyllum</i>	<i>demersum</i>	coontail
E	Convolvulaceae	Morning-Glory	<i>Dichondra</i>	<i>caroliniensis</i>	Carolina ponyfoot
E	Cornaceae	Dogwood	<i>Cornus</i>	<i>drummondii</i>	roughleaf dogwood
E	Ebenaceae	Ebony	<i>Diospyros</i>	<i>texana</i>	Texas persimmon
E	Fabaceae	Pea	<i>Amorpha</i>	<i>fruticosa</i>	bastard indigo
E	Fabaceae	Pea	<i>Dalea</i>	<i>frutescens</i>	black dalea
E	Fabaceae	Pea	<i>Dalea</i>	<i>greggii</i>	Gregg's prairie clover
E	Fabaceae	Pea	<i>Dalea</i>	<i>aurea</i>	golden dalea
E	Fabaceae	Pea	<i>Eysenhardtia</i>	<i>texana</i>	Texas kidneywood
E	Fabaceae	Pea	<i>Indigofera</i>	<i>miniata var miniata</i>	scarlet pea
E	Fabaceae	Pea	<i>Sophora</i>	<i>affinis</i>	Eve's Necklace
E	Fabaceae	Pea	<i>Sophora</i>	<i>secundiflora</i>	Texas Mountainlaurel
E	Fagaceae	Beech	<i>Quercus</i>	<i>fusiformis</i>	Plateau Live Oak
E	Gentianaceae	Gentian	<i>Eustoma</i>	<i>grandiflorum</i>	bluebells
E	e	Horse-Chestnut	<i>Aesculus</i>	<i>pavia var. pavia</i>	red buckeye
E	Hydrangeaceae	Hydrangea	<i>Philadelphus</i>	<i>ernestii</i>	canyon mockorange
E	Lamiaceae	Mint	<i>Physostegia</i>	<i>correllii</i>	Correll false-dragonhead
E	Lamiaceae	Mint	<i>Physostegia</i>	<i>intermedia</i>	obedient plant

Form	Height	Bloom Color	BloomPrd	Sun	Water Needs	Riparian	On-Site
H PER	1'-3'	white	Spring Summer Fall	Full	Low		
H PER	1'-3'	white	Spring Summer Fall	Full to Part	Low		
H PER	2'	yellow, green	Spring Summer Fall	Full	Low		
W SHR DEC	3'-6'	white	Fall	Full to Part	Low		
H PER	1'-3'	yellow	Spring Summer Fall	Part Shade	Med-High		
H PER	1'-3'	blue	Spring Summer	Full to Part	Med	✓	
H PER	1'-3'	purple, blue	Summer Fall	Full to Part	Med	✓	
H PER	1'-3'	purple, blue	Spring Summer Fall	Full to Part	Med		
H PER	1-3'	pink, purple	Spring Summer	Full to Part	Low		
H PER	3-6'	pink, purple	Spring Summer	Full	High		
H PER	1-3'	yellow	Spring Summer	Full	Med		
H PER	3'-6'	yellow	Summer Fall	Full	Low-Med		
H PER	1'	yellow	Summer Fall	Full	Low		
H PER	1-3'	yellow	Spring Summer	Shade	Low-Med		
H PER	1-3'	white	Spring Summer	Full	Low		
H PER	3'-12'	yellow	Summer Fall	Full	Low		
H PER	3'-6'	yellow	Summer Fall	Full	Low		
H PER	1-3'	yellow	Fall Summer Spring	Full to Shade	Med	✓	
H PER	1-3'	yellow	Summer Fall	Full to Shade	Med		
H PER	1-3'	purple	Fall	Full to Part	High	✓	
H PER	1-3'	purple, violet	Fall	Full to Part	Low	✓	
H PER	1-3'	white	Fall	Part Shade	Low		
H PER	3'-6'	pink, purple	Summer Fall	Full	Low		
H PER	3-6'	purple	Fall	Full	Low		
W SUB PER	3'-6'	yellow	Fall	Part Shade	Med		
DEC	3-6'	yellow	Summer Fall	Full to Part	Low		
DEC	1-3'	yellow, orange	Spring Summer Fall	Full to Part	Low		
H AN/PER	1'-3'	red	Spring Summer Fall	Full to Shade	Low	✓	
W SHR DEC	6'-12'	white	Spring Summer	Part Shade	Med		
W SMT DEC	12'-36'	white	Spring	Part Shade	Low		
H PER	9"	submerged	Summer	Full	High	✓	
H PER	mat 0.4-5"	green, white	Spring	Full to Part	High		
W SHR DEC	12'-30'	white	Spring Summer	Part to	Low		
W SMT DEC	10'-15'	white	Spring	Full to Part	Low		
W SHR DEC	6'-12'	purple	Spring Summer	Full to Part	Med-High	✓	
DEC	1'-3'	purple	Summer Fall	Full	Low		
DEC	1-3'	purple	Spring Summer Fall	Full to Part	Low		
H PER	1-2'	yellow	Spring Summer	Full	Low		
W SHR DEC	6'-9'	white	Spring Summer Fall	Full	Low		
H PER	1'	red, pink	Spring Summer Fall	Full to Part	Low		
W TR DEC	15'-30'	white, pink	Spring	Part Shade	Low		✓
W SHR EV	10'-20'	purple	Spring	Full to Part	Low-Med		✓
W TR EV	30'-70'	yellow	Spring	Full to Part	Low		✓
H AN/PER	1'-3'	purple	Spring Summer Fall	Full	High	✓	
W SMT DEC	10 - 40'	red, yellow	Spring	Part Shade	Low-Med		
W SHR DEC	3'-5'	white	Spring	Full to Part	Low-Med		
H PER	3-6'	purple, lavender	Summer	Full to Part	High	✓	
H PER	3'-6'	purple	Spring Summer	Full to Part	High	✓	

Group	Family	Family Common Name	Genus	Species	Common Name
E	Lamiaceae	Mint	<i>Salvia</i>	<i>lyrata</i>	lyreleaf sage
E	Lamiaceae	Mint	<i>Salvia</i>	<i>roemeriana</i>	cedar sage
E	Lamiaceae	Mint	<i>Scutellaria</i>	<i>ovata</i>	eggleaf skullcap
E	Lauraceae	Laurel	<i>Lindera</i>	<i>benzoin</i>	spicebush
E	Malvaceae	Mallow	<i>Callirhoe</i>	<i>involucrata</i>	winecup
E	Malvaceae	Mallow	<i>Hibiscus</i>	<i>laevis</i>	halberdleaf rosemallow
E	Malvaceae	Mallow	<i>Kosteletzkya</i>	<i>virginica</i>	Virginia saltmarsh mallow
E	Malvaceae	Mallow	<i>Malvaviscus</i>	<i>arboreus var. drummondii</i>	Turk's cap
E	Malvaceae	Mallow	<i>Pavonia</i>	<i>lasiopetala</i>	rock rose
E	Nymphaeaceae	Waterlily	<i>Nymphaea</i>	<i>mexicana</i>	yellow water lily
E	Onagraceae	Primrose	<i>Ludwigia</i>	<i>peploides ssp. peploides</i>	smooth water-primrose
E	Oxalidaceae	Wood-Sorrel	<i>Oxalis</i>	<i>violacea</i>	Violet Wood-Sorrel
E	Phytolaccaceae	Pokeweed	<i>Rivina</i>	<i>humilis</i>	Pigeonberry
E	Primulaceae	Primrose	<i>Samolus</i>	<i>ebracteatus var. alyssoides</i>	limewater brookweed
E	Ranunculaceae	Crowfoot	<i>Aquilegia</i>	<i>canadensis</i>	columbine
E	Rosaceae	Rose	<i>Crataegus</i>	<i>sp.</i>	hawthorn
E	Rosaceae	Rose	<i>Malus</i>	<i>ioensis</i>	Blanco crab apple
E	Rosaceae	Rose	<i>Prunus</i>	<i>caroliniana</i>	Laurel Cherry
E	Rosaceae	Rose	<i>Prunus</i>	<i>mexicana</i>	Mexican plum
E	Rosaceae	Rose	<i>Rosa</i>	<i>arkansana</i>	prairie wild rose
E	Rubiaceae	Madder	<i>Cephalanthus</i>	<i>occidentalis</i>	buttonbush
E	Scrophulariaceae	Figwort	<i>Bacopa</i>	<i>monnieri</i>	water hyssop
E	Scrophulariaceae	Figwort	<i>Penstemon</i>	<i>baccharifolius</i>	rock penstemon
E	Scrophulariaceae	Figwort	<i>Penstemon</i>	<i>cobaea</i>	foxglove
E	Solanaceae	Potato	<i>Capsicum</i>	<i>annuum</i>	chili piquin
E	Styracaceae	Storax	<i>Styrax</i>	<i>platanifolius v platanifolius</i>	sycamoreleaf snowbell
E	Ulmaceae	Elm	<i>Ulmus</i>	<i>crassifolia</i>	Cedar Elm, Fall Elm
E	Verbenaceae	Vervain	<i>Callicarpa</i>	<i>americana</i>	American beautyberry
E	Verbenaceae	Vervain	<i>Lantana</i>	<i>horrida</i>	Texas lantana
E	Verbenaceae	Vervain	<i>Phyla</i>	<i>nodiflora</i>	common frogfruit
E	Verbenaceae	Vervain	<i>Verbena</i>	<i>xutha</i>	coarse vervain
E	Violaceae	Violet	<i>Viola</i>	<i>missouriensis</i>	Missouri violet
E	Vitaceae	Grape	<i>Parthenocissus</i>	<i>quinquefolia</i>	Virginia Creeper

Form	Height	Bloom Color	BloomPrd	Sun	Water Needs	Riparian	On-Site
H PER	1-3'	white, blue, violet	Spring Summer	Full to Shade	Low-Med		
H PER	1-3'	red	Spring Summer	Part Shade	Low		
H PER	1-3'	purple, blue, violet	Spring Summer	Shade	Med-High		
W SMT DEC	6'-12'	white, yellow	Spring	Full to Shade	Med	✓	
H PER	6"-12"	purple, white	Spring Summer	Full to Part	Low-Med		
H PER	3'-6'	white, pink	Spring Summer Fall	Full to Part	High	✓	
DEC	3'-6'	white, pink	Summer Fall	Full	High	✓	
H PER	2'-5'	red	Spring Summer Fall	Shade	Med		
DEC	3'-6'	pink	Spring Summer Fall	Full to Part	Low		
H PER	8" x 8" floating	yellow	Spring Summer	Full	High	✓	
H PER	6'-12'	yellow	Spring Summer Fall	Full	High	✓	
H PER	6"-1'	purple	Spring Summer	Part Shade	Med-High		✓
H PER	1-3'	pink,white	Spring Summer Fall	Part Shade	Med		✓
H PER	1'	white, pink	Spring Summer Fall	Full to Part	High	✓	
H PER	1'-3'	red, yellow	Spring Summer	Shade	Low-Med		
W SHR DEC	12'-15'						
W SMT DEC	12'-36'	white, pink	Spring	Full	Med		
W SMT EV	15-20'	white	Spring	Full to Part	Med		✓
W SMT DEC	12'-36'	white	Spring	Full to Part	Med-High		
W SUB PER DEC	1'-6'	pink	Summer Fall	Full	Med-High		
W SHR DEC	6 - 12'	white, pink	Summer Fall	Part Shade	High		
H AN/BI/PER	1'	white, purple	Spring Summer Fall	Full to Part	High	✓	
H PER	1-1.5'	red	Summer Fall	Full to Part	Low		
H PER	1-2'	pink	Spring	Full to Part	Med		
W SHR DEC	1'-3'	white	Summer Fall	Full to Shade	Low		
W SHR DEC	6'-12'	white	Spring	Part Shade	Med		
W TR DEC	30'-70'	red, green	Summer Fall	Part Shade	Med		✓
W SHR DEC	3'-6'	white, pink	Summer Fall Winter	Part Shade	Low		
W SHR DEC	3'-6'	orange,yellow	Spring Summer Fall	Full	Low		
H PER	3-6"	white	Spring Summer Fall	Full to Part	Low-Med	✓	
H PER	6.6'	blue, purple	Spring Summer Fall	Full to Part	Low		
H PER	6"-1'	purple, white	Spring	Full to Shade	Med		
VN W DEC	climbing 3-40'	green	Spring Summer	Full to Shade	Low		✓

