



Little Bear Creek Recharge Enhancement Project

Capital Improvement Project 6660.024

Pre-Construction Public Meeting, October 2024

*Stephanie Lott, Clayton West, Lindsey Sydow – Watershed Protection Department
Kevin Thuesen, Cait McCann Teran – Austin Water Wildland Conservation*



Little Bear Creek Recharge Enhancement Facility



WATERSHED
PROTECTION

Austin
WATER



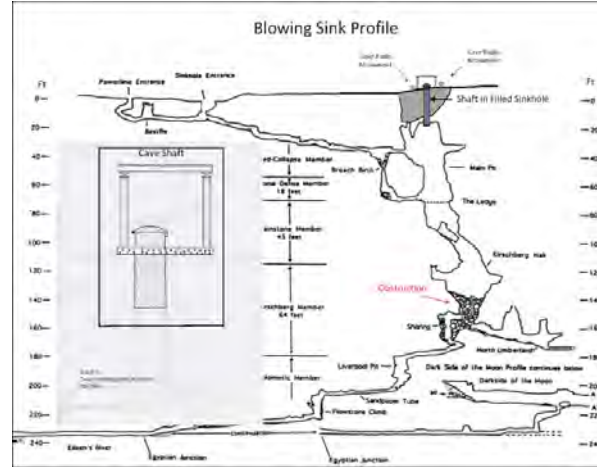
CITY OF AUSTIN WATERSHED PROTECTION DEPARTMENT



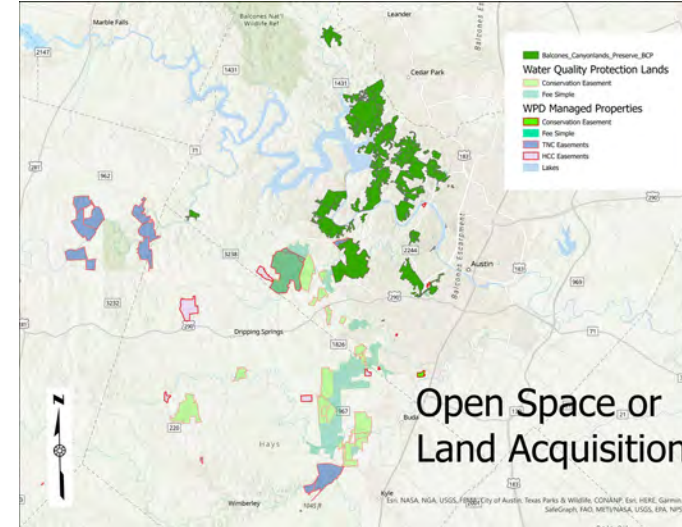
Water Quantity and Quality Best Management Practices



Recharge feature with grate in Onion Creek



Blowing Sink Cave in South Austin



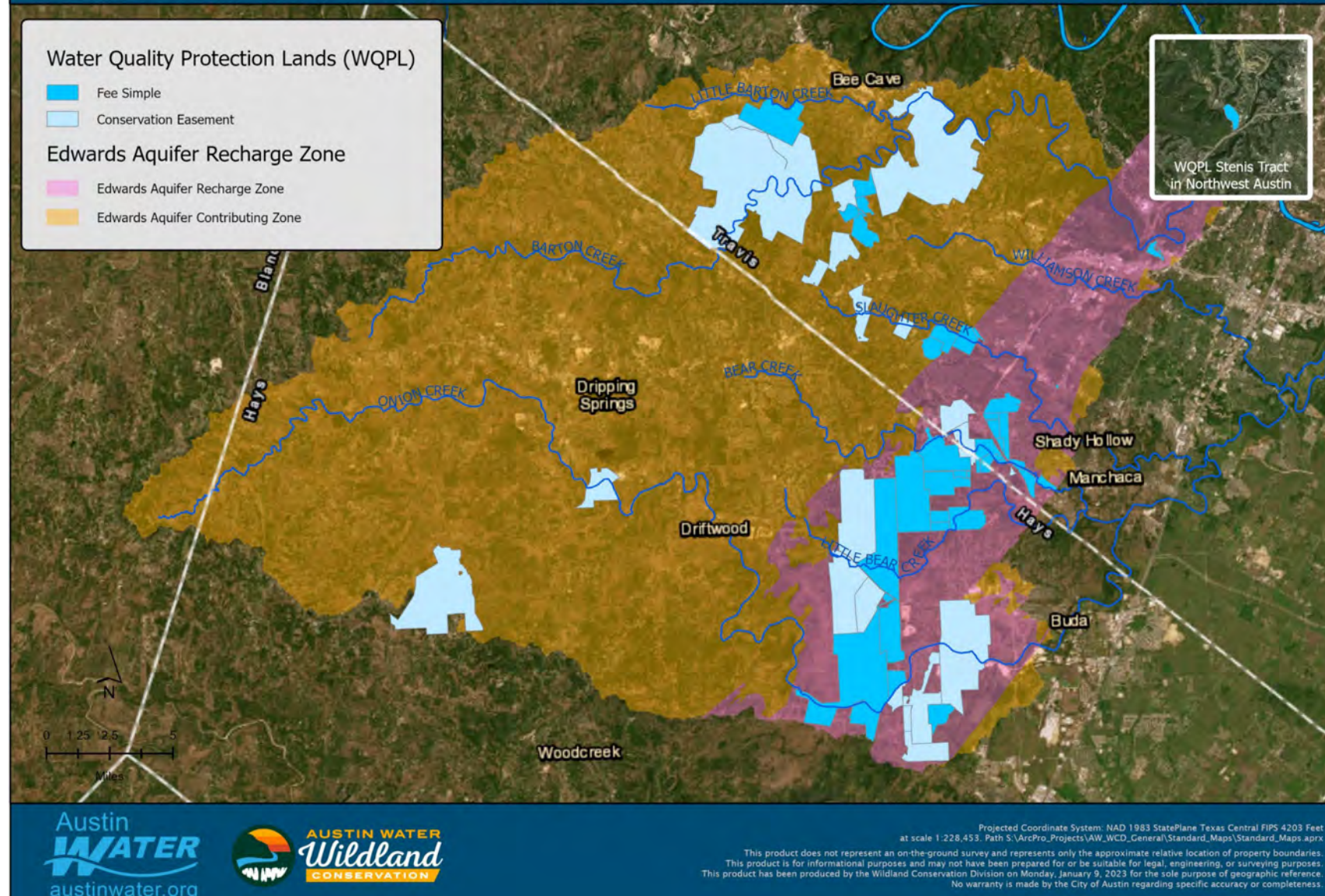
- Land Acquisition
- Recharge Restoration
- Recharge Enhancement



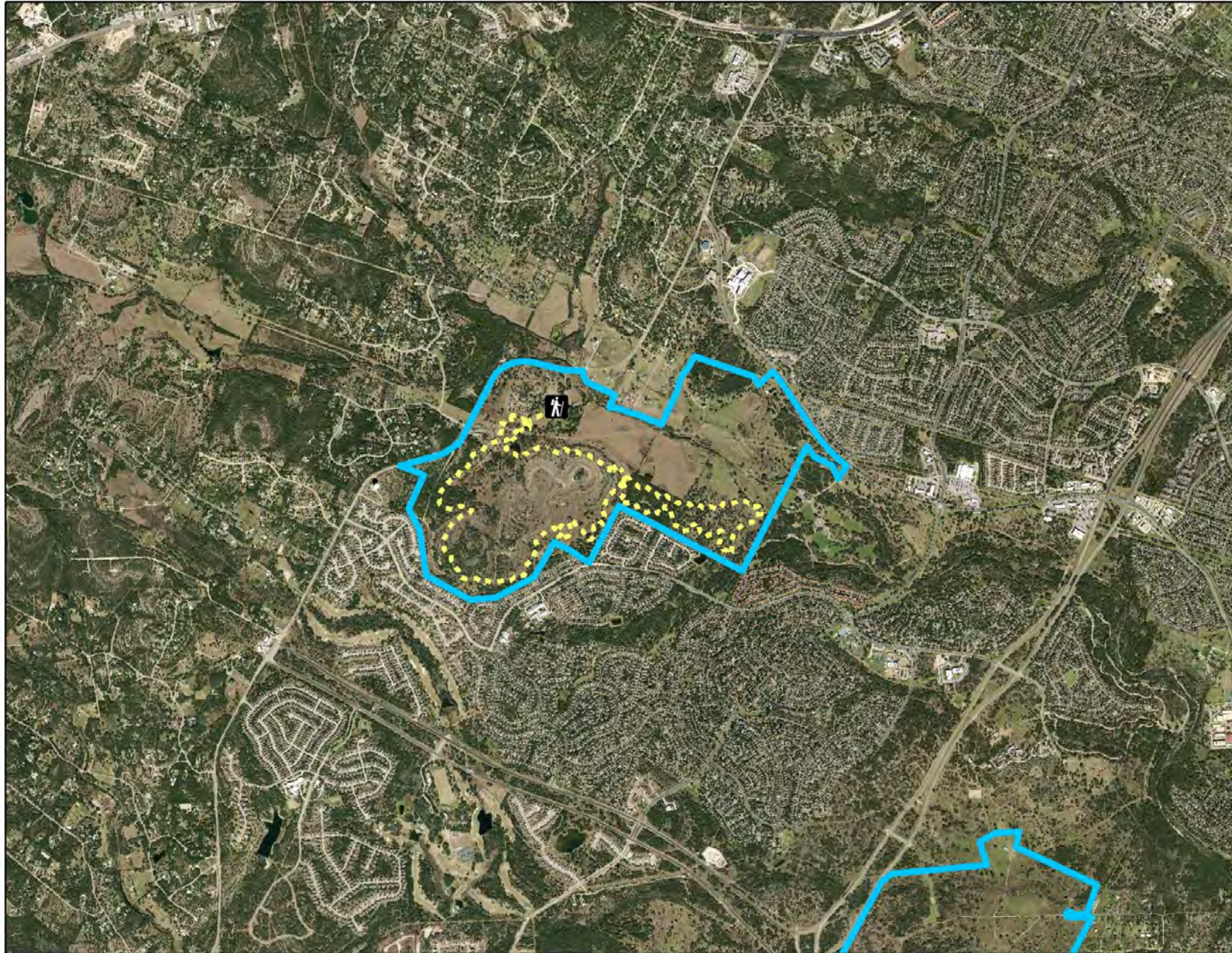
Antioch Cave in Buda – Barton Springs Edwards Aquifer Conservation District



Water Quality Protection Lands



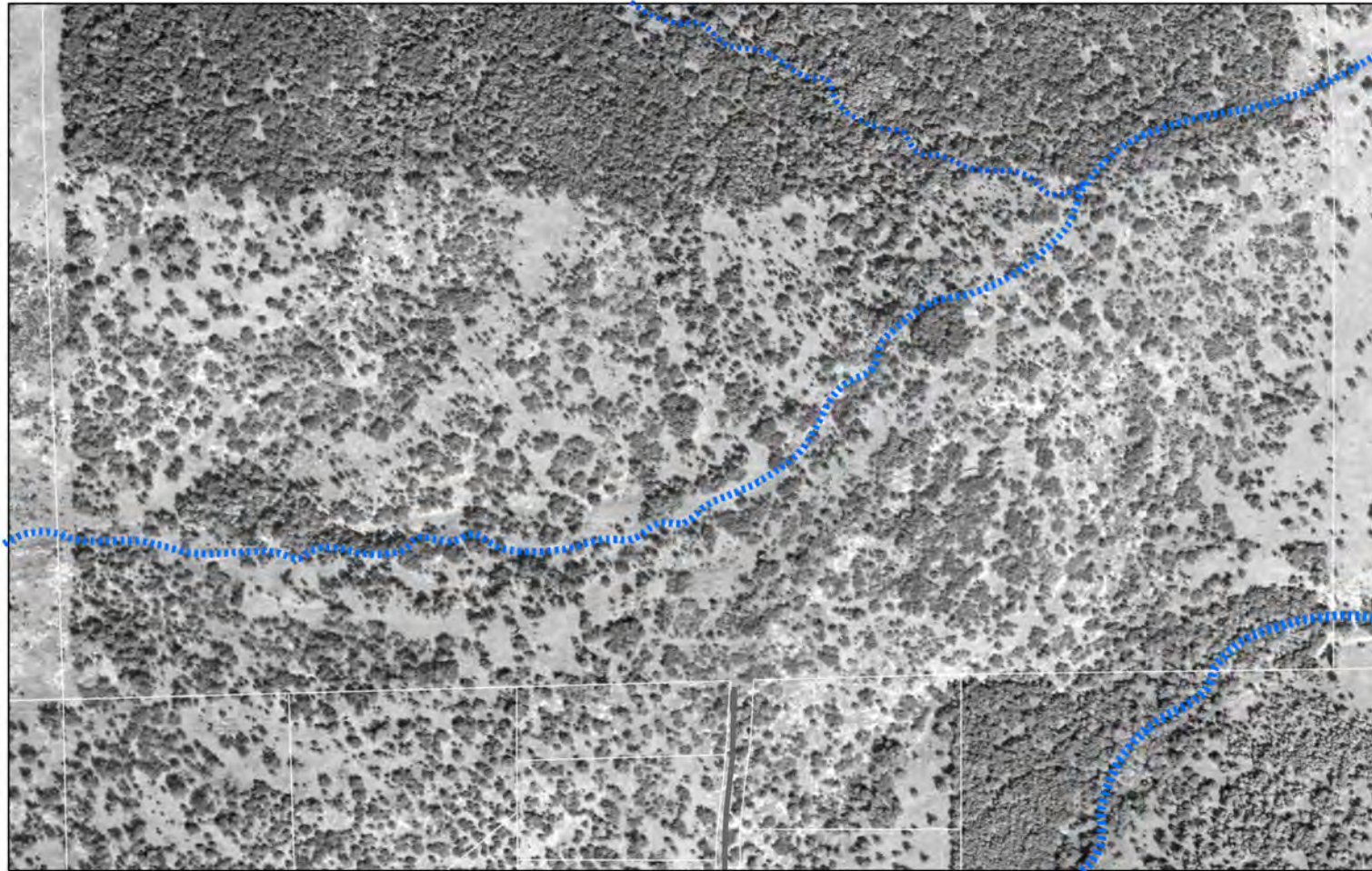








1965



Tributary Creek

Little Bear Creek



1984

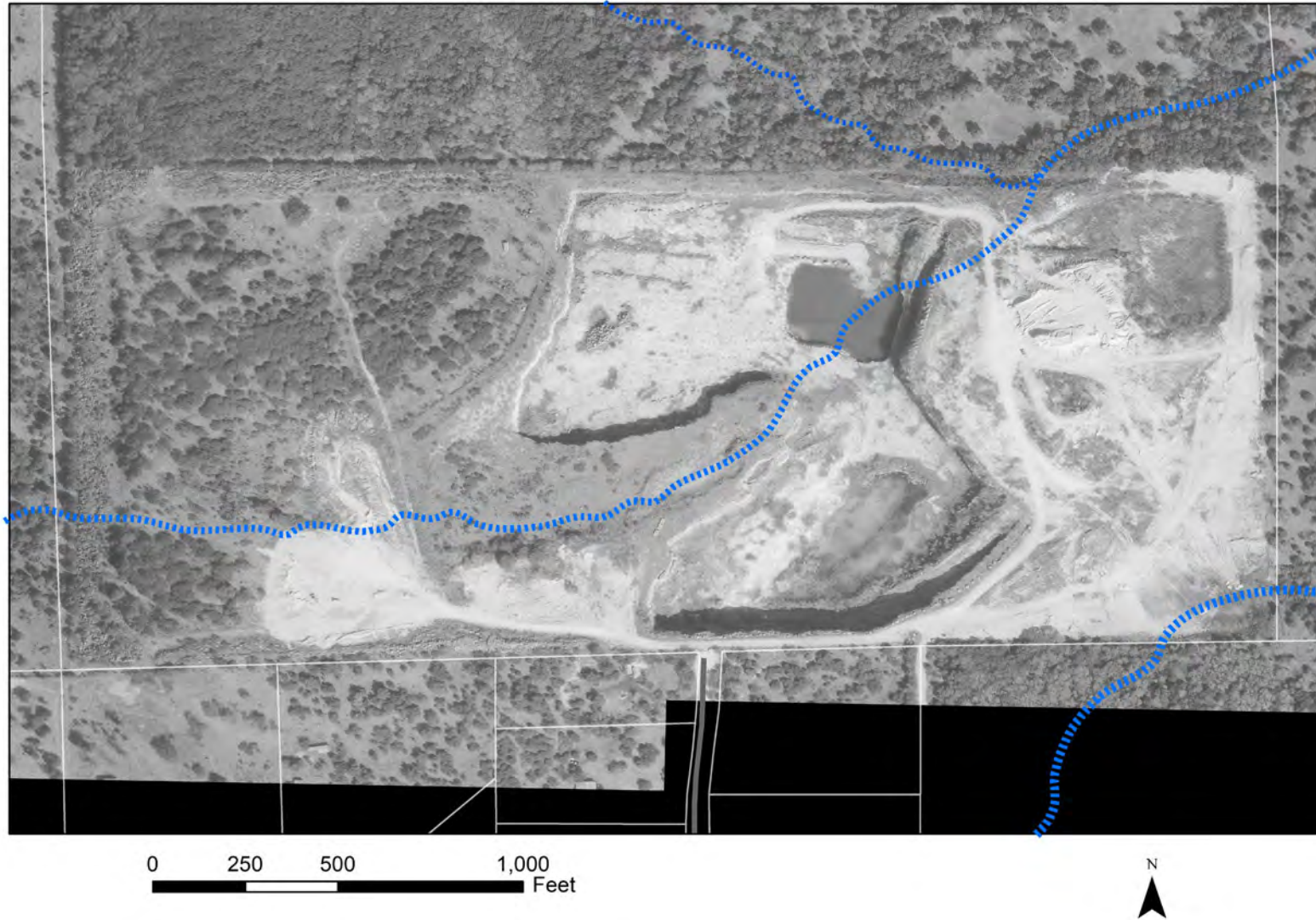


0 250 500 1,000
Feet



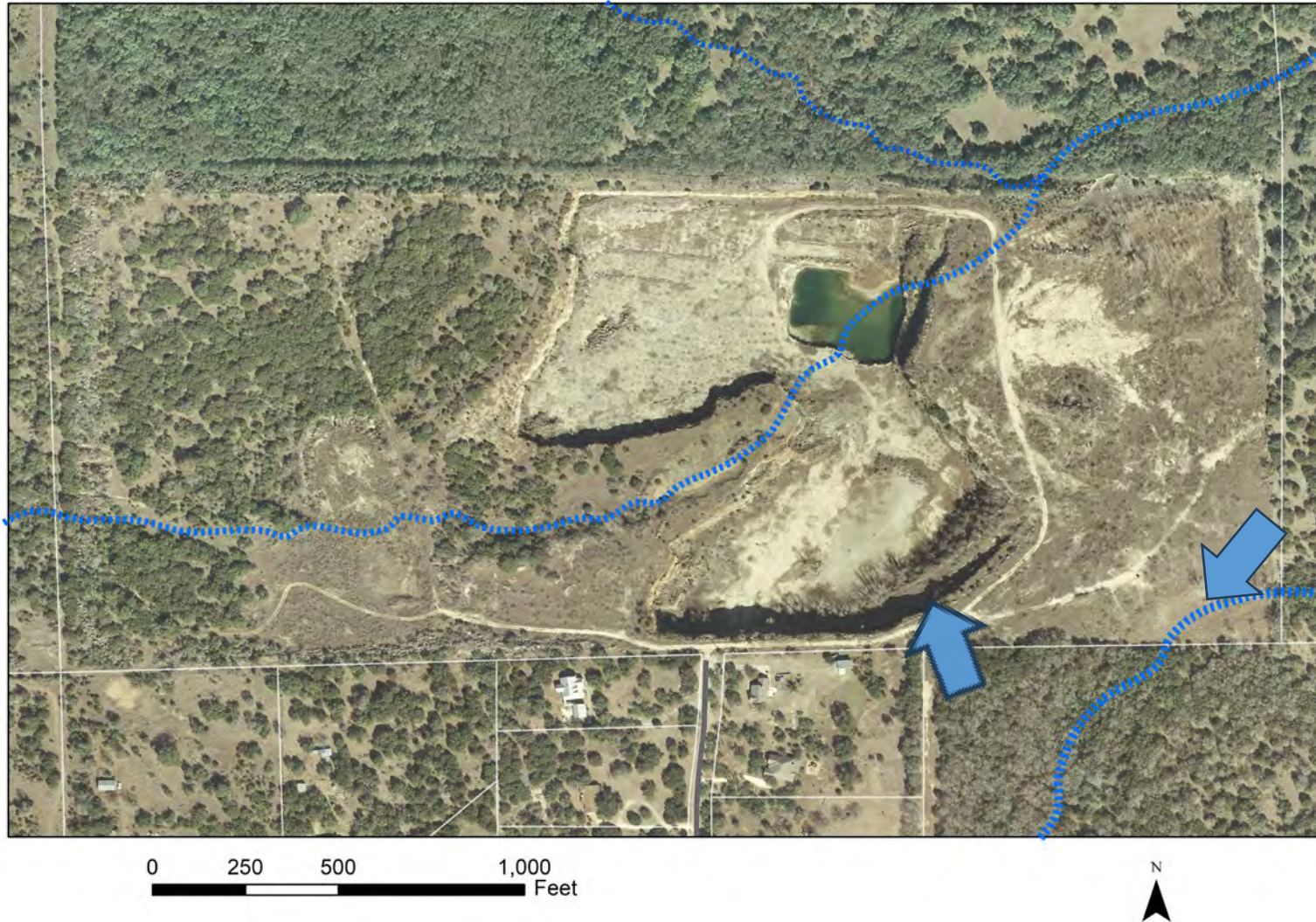


1997





2009





Site Photos



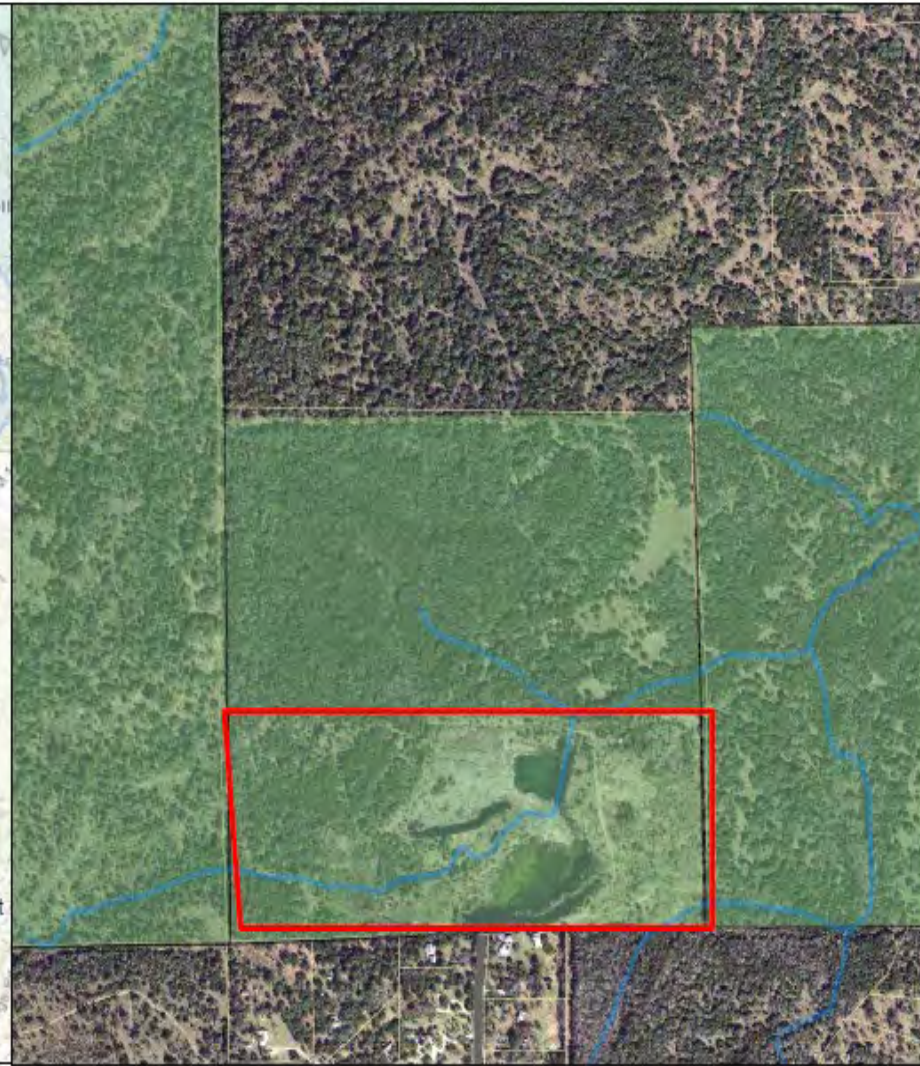
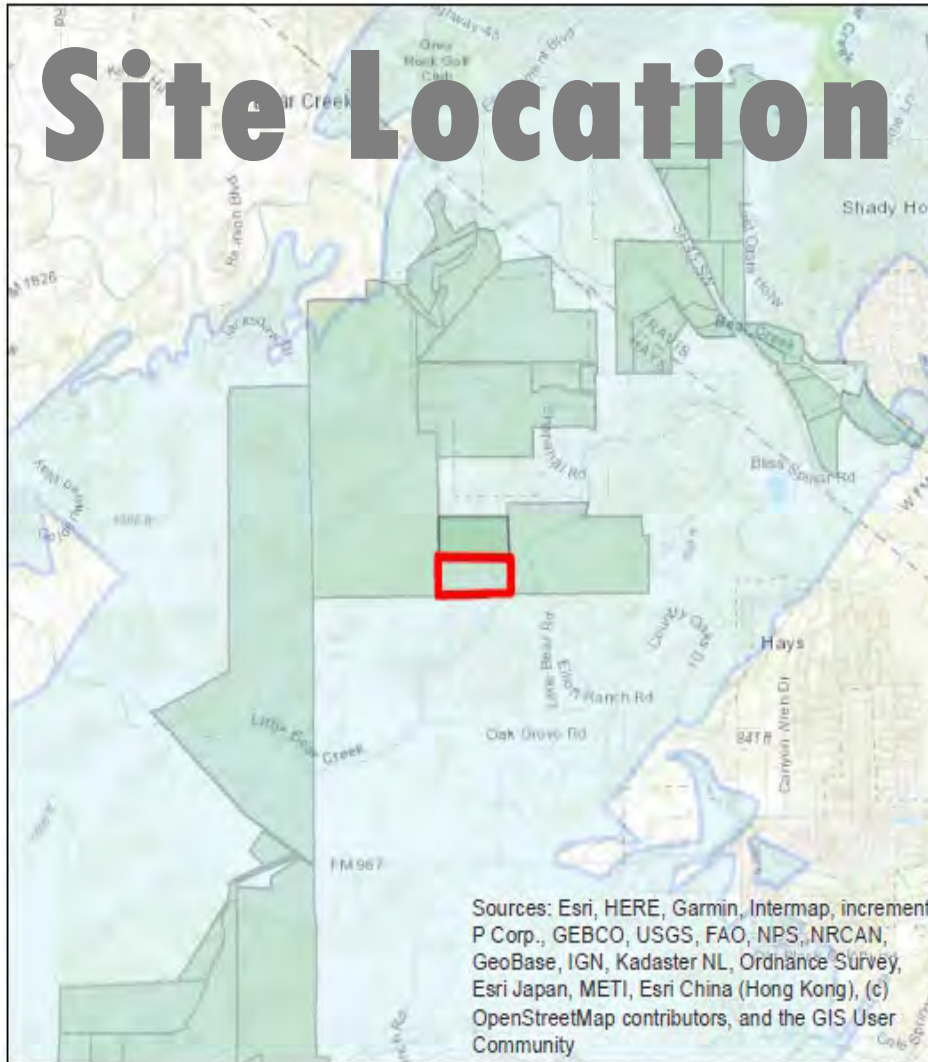
Quarry Pit – Northwest View

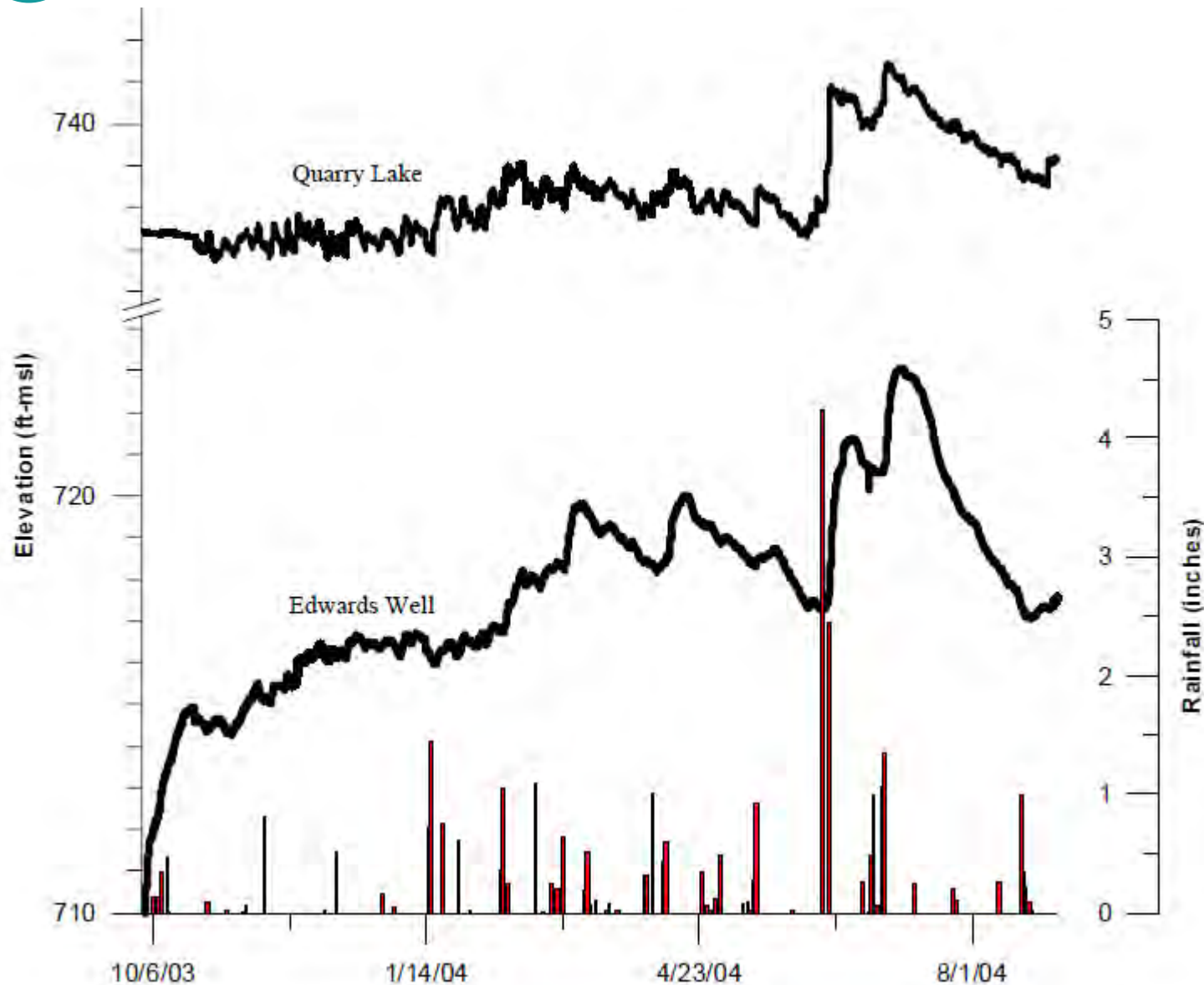


Little Bear Creek Channel –Southwest/Upstream View



Site Location





Status Report: Edwards and
Trinity Aquifer
Hydrogeologic
Investigations, Wentzel
Tract, Hays County, Texas
September 2004

Conclusion:
Water levels within the
Wentzel quarry lake reflect
water-table conditions of
the Edwards Aquifer.





Why do this Project?

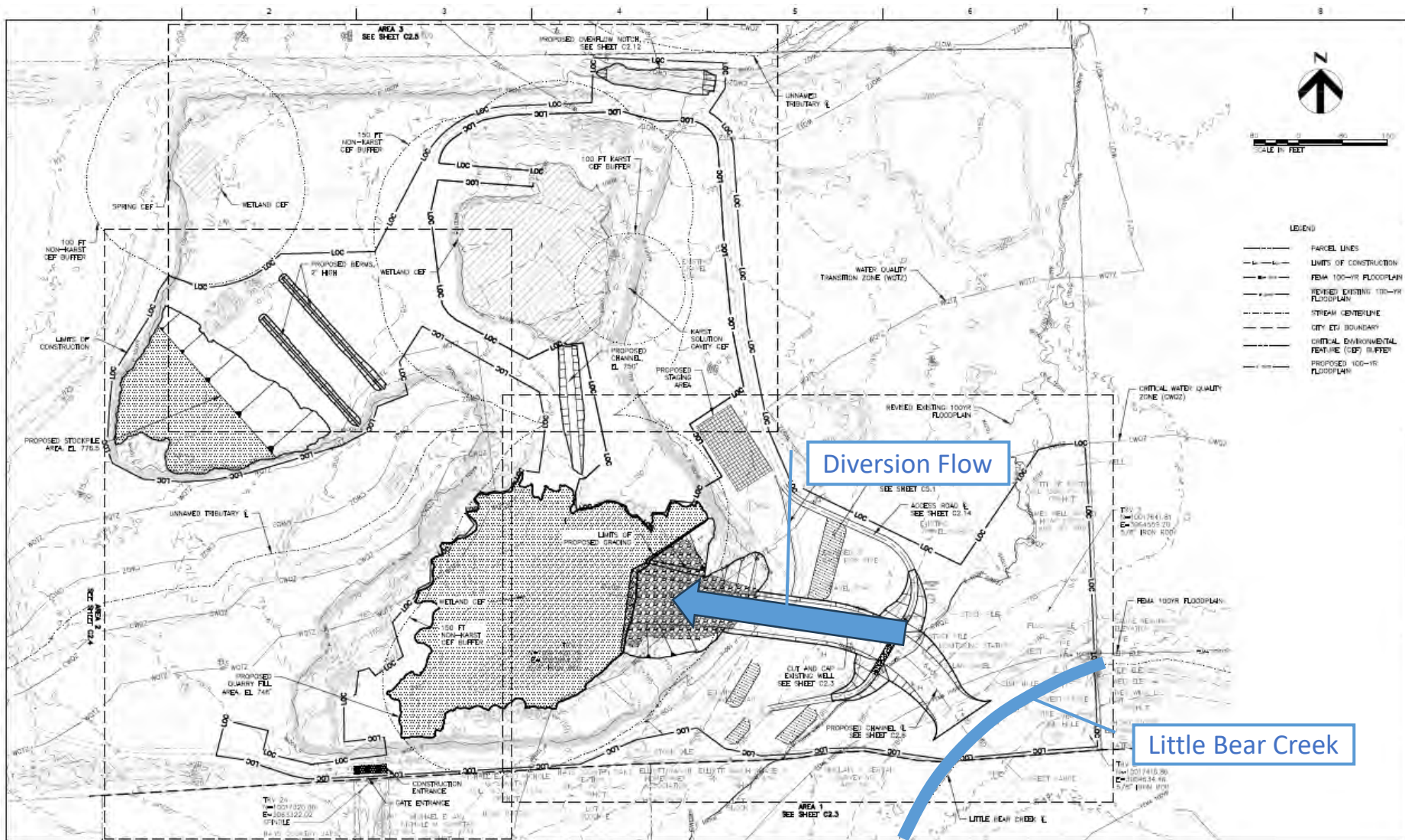


- The Quarry Lake is hydrologically connected to Barton Springs
- Little Bear Creek watershed is largely protected, so flood water quality is high
- Therefore, the Quarry represents a unique opportunity to:
 - Enhance recharge to the Edwards Aquifer
 - Preserve flows at Barton Springs
 - Maintain groundwater elevations
 - Potentially offset some effects of over-pumping



October 2013 – Halloween Flood





**What is
the
project?**

**100%
Design**



HDR Engineering, Inc.
TBPCLs Firm
Registration No. F-754

ISSUE	DATE	DESCRIPTION

PROJECT MANAGER	E. STEWART, P.E.
DESIGNER	E. STEWART, P.E.
DRAWN	J. GARCIA
CHECKED BY	S. MARTIN
PROJECT NUMBER	1014255



**LITTLE BEAR CREEK
RECHARGE ENHANCEMENT
FACILITY**
CIP 6560.024

QUARRY SITE PLAN



FILENAME: 014255
SCALE: 1" = 50'

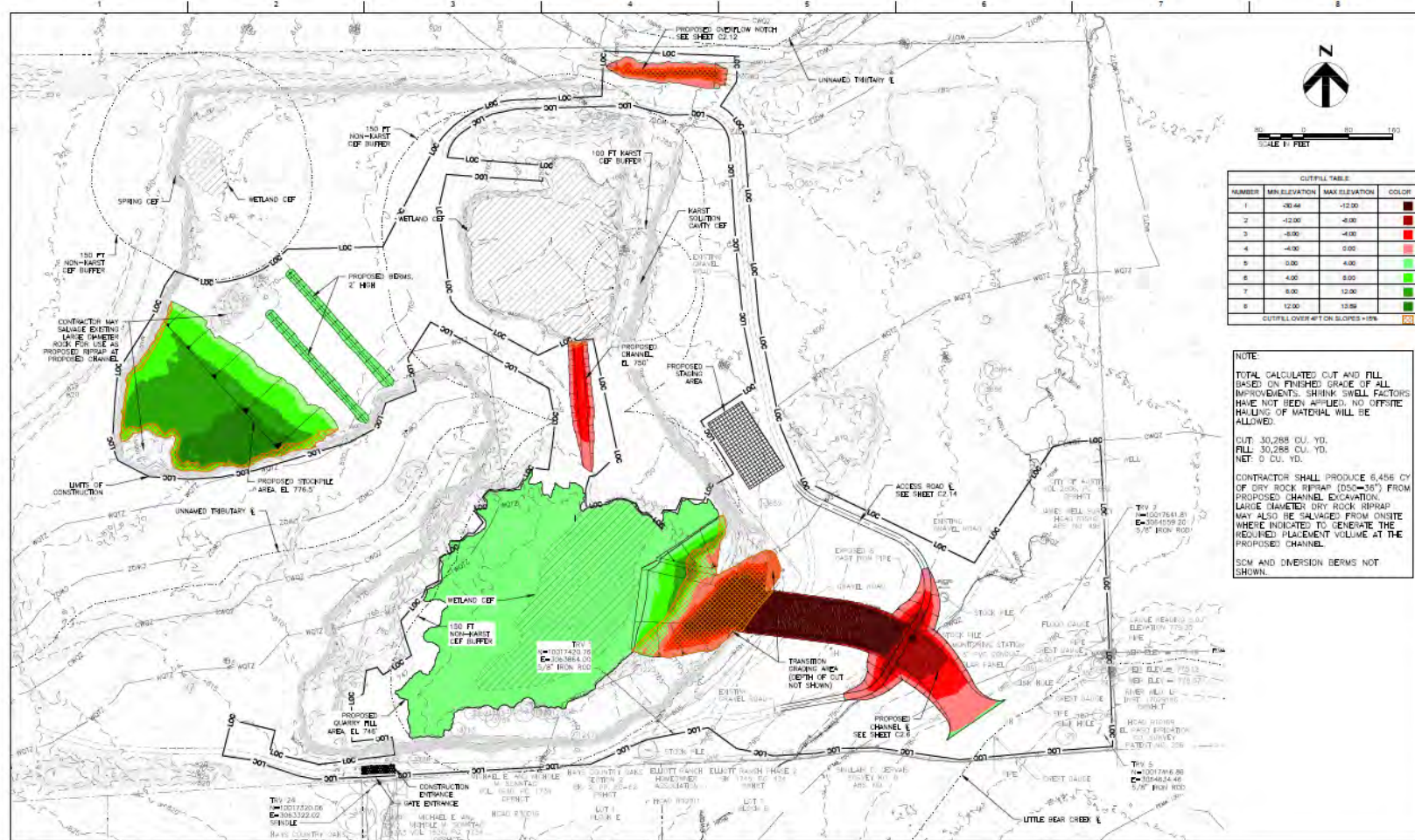
SHEET: 4 of 4
G1.4



What is the Project



100% Design



CUT/FILL TABLE			
NUMBER	MIN ELEVATION	MAX ELEVATION	COLOR
1	-30.44	-12.00	Dark Red
2	-12.00	-8.00	Red
3	-8.00	-4.00	Light Red
4	-4.00	0.00	Pink
5	0.00	4.00	Light Green
6	4.00	8.00	Green
7	8.00	12.00	Dark Green
8	12.00	13.69	Dark Green



ISSUE	DATE	DESCRIPTION

PROJECT MANAGER: E. STEVART, P.E.
DRAWN BY: J. GANTU
CHECKED BY: S. MARTIN
PROJECT NUMBER: 101-4205



LITTLE BEAR CREEK
RECHARGE ENHANCEMENT
FACILITY
CIP 6660.024

SP-2022-04520

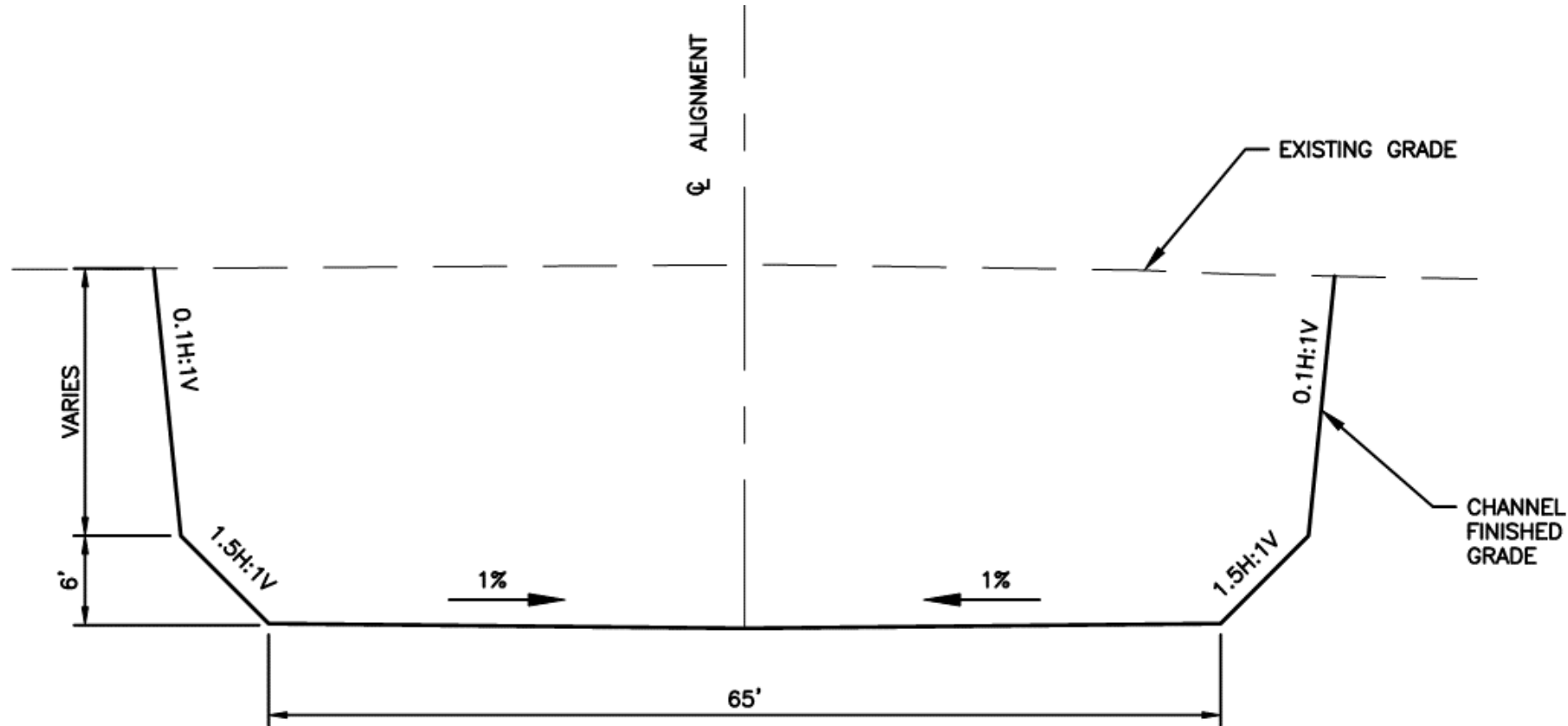
CUT/FILL MAP

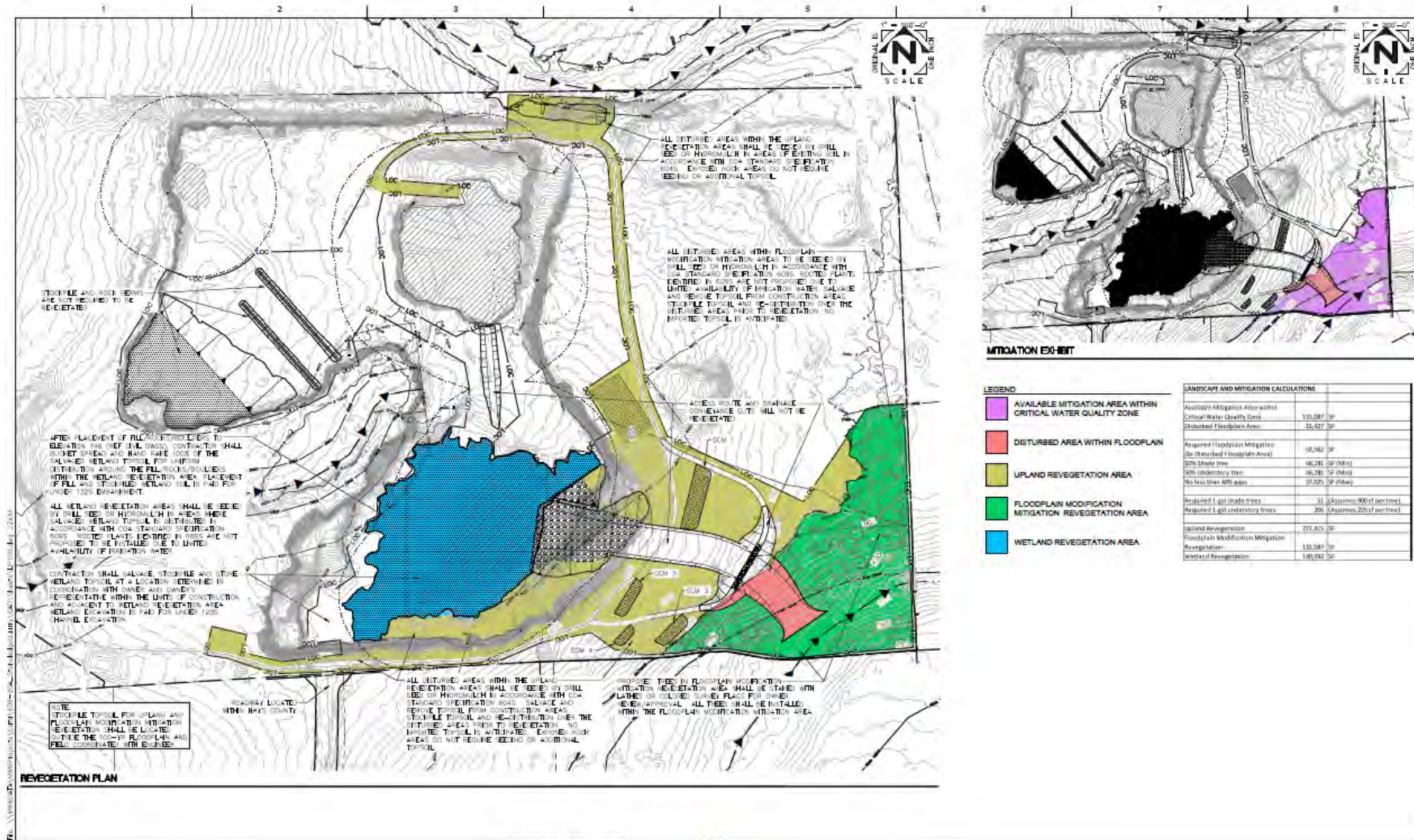
FILENAME: C2.2.DWG
SCALE: 1" = 10'

SHEET #1 OF 1
C2.2



Diversion Channel-Typical Section



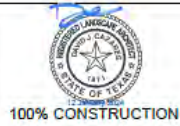


Overall Revegetation Plan



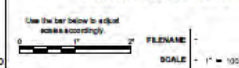
ISSUE	DATE	DESCRIPTION

PROJECT MANAGER: S. STEWART, P.E.
DESIGNER: D. CAHILL, P.E.
DRAWN: K. EDWARDS
CHECKED BY: D. CAHILL, P.E.
PROJECT NUMBER: 104000



LITTLE BEAR CREEK
RECHARGE ENHANCEMENT
FACILITY
CIP 6662.024

OVERALL REVEGETATION PLAN



FILENAME:
SCALE: 1" = 100'
SHEET: 11.1



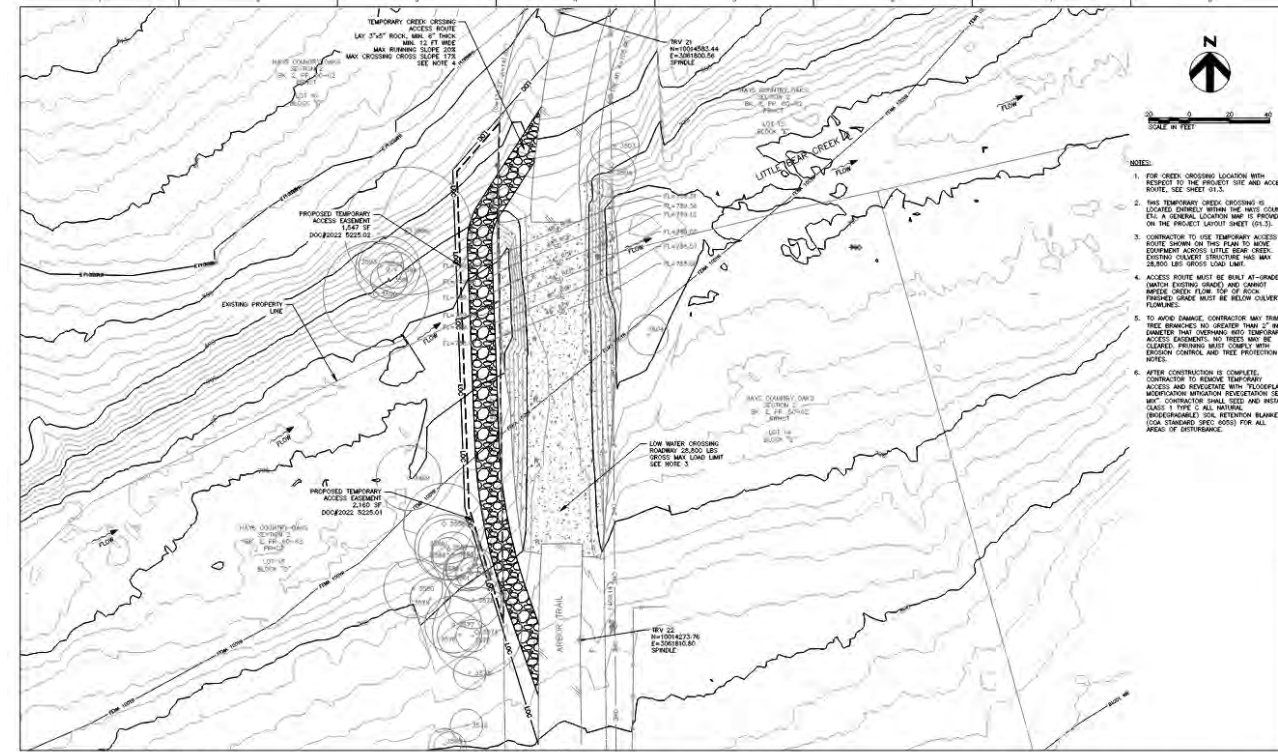
Project Access & Impacts

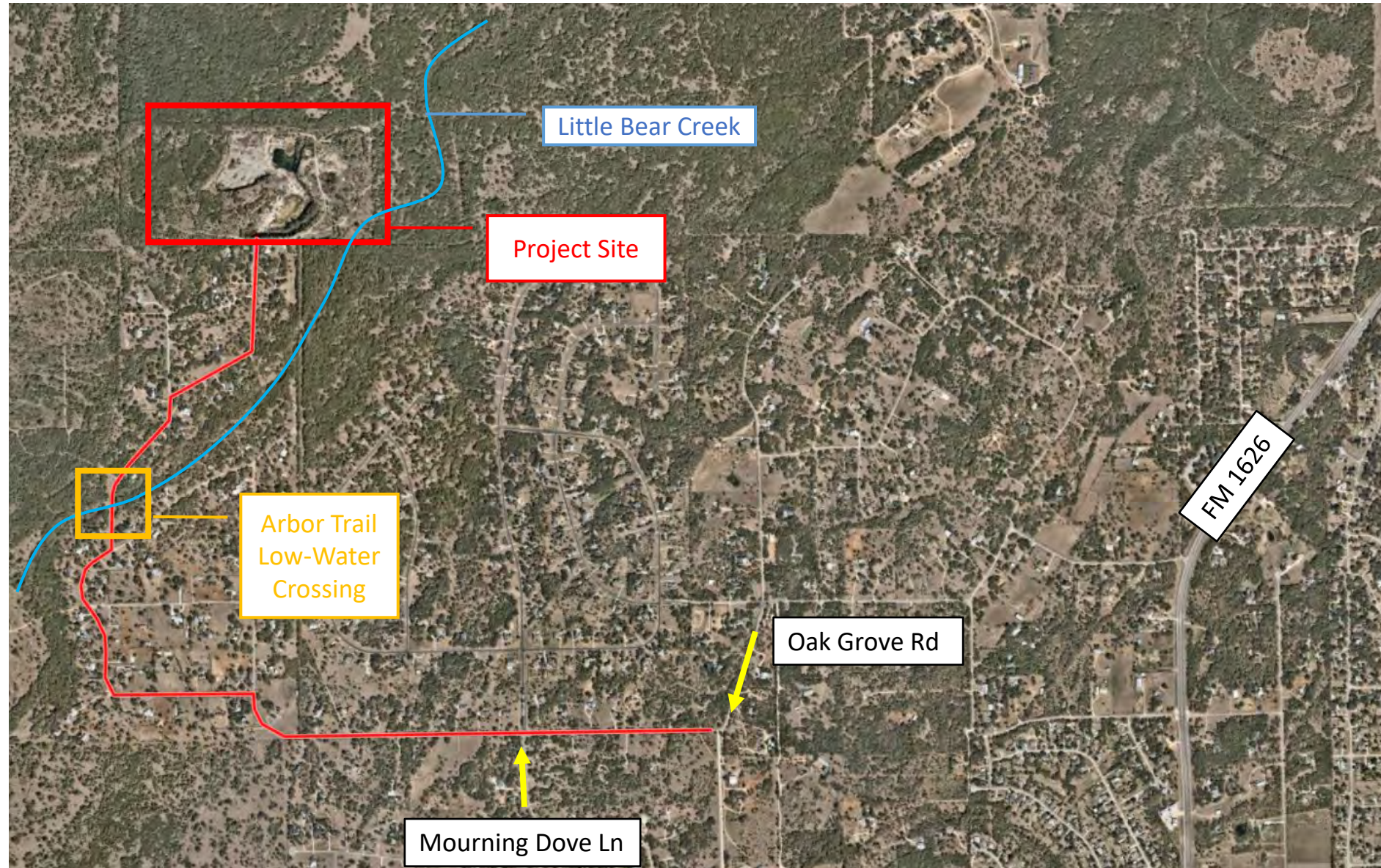
Construction Access via Arbor Trail and Oak Arbor Trail

- At low water crossing on Arbor Trail, Contractor is permitted to establish a *temporary* construction bypass across Little Bear Creek adjacent to the existing road
- No change to residential access

Other than bringing equipment to the site, there will be very little large truck traffic through the neighborhood

- All rock materials for construction will be generated on-site from excavated stone
- Excavation of rock may be noisy





Project Access Map



Project Schedule

Construction Phase

- Contractor Notice to Proceed - Issued October 7
- Establishing Access, Survey, Site Erosion Controls – October 7-14
- Heavy Construction – mid-October through March 2025 (+/- six months)
- Site Revegetation – Spring 2025
- Typical Work Hours: 7am-6pm M-F, possible Saturday work as needed





Project Contacts



Project Manager:	Tunde Daramola 512-974-7216
Construction Inspector:	Robert Middleton 512-974-8761
Project Sponsor:	Clayton West 512-974-9792

Project Website:

[AustinTexas.gov/LittleBear](https://austintexas.gov/LittleBear)

Austin Water Wildlands Conservation:

[AustinTexas.gov/Wildlands](https://austintexas.gov/Wildlands)



Thank You!

Questions?