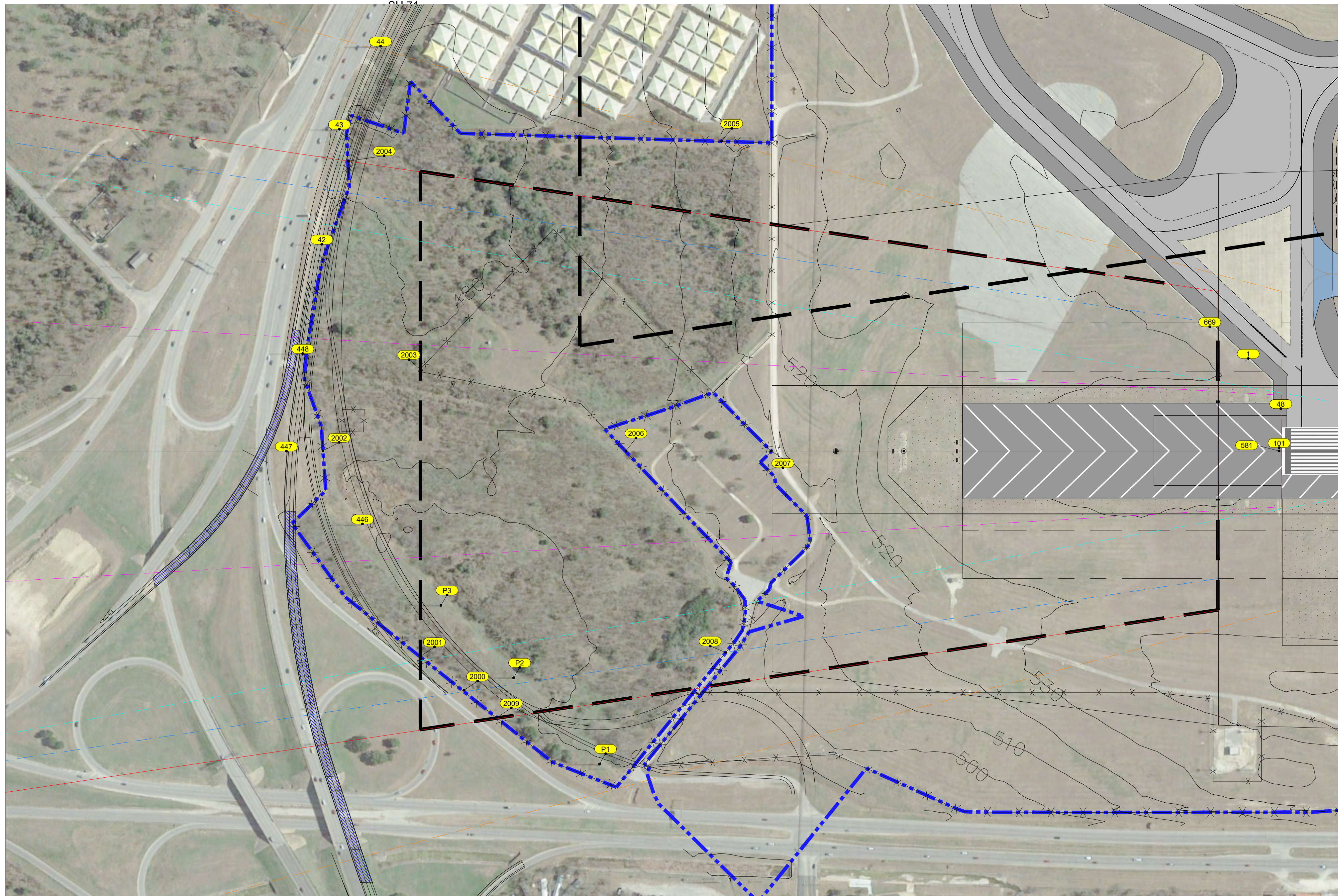


RUNWAY 17R PLAN VIEW



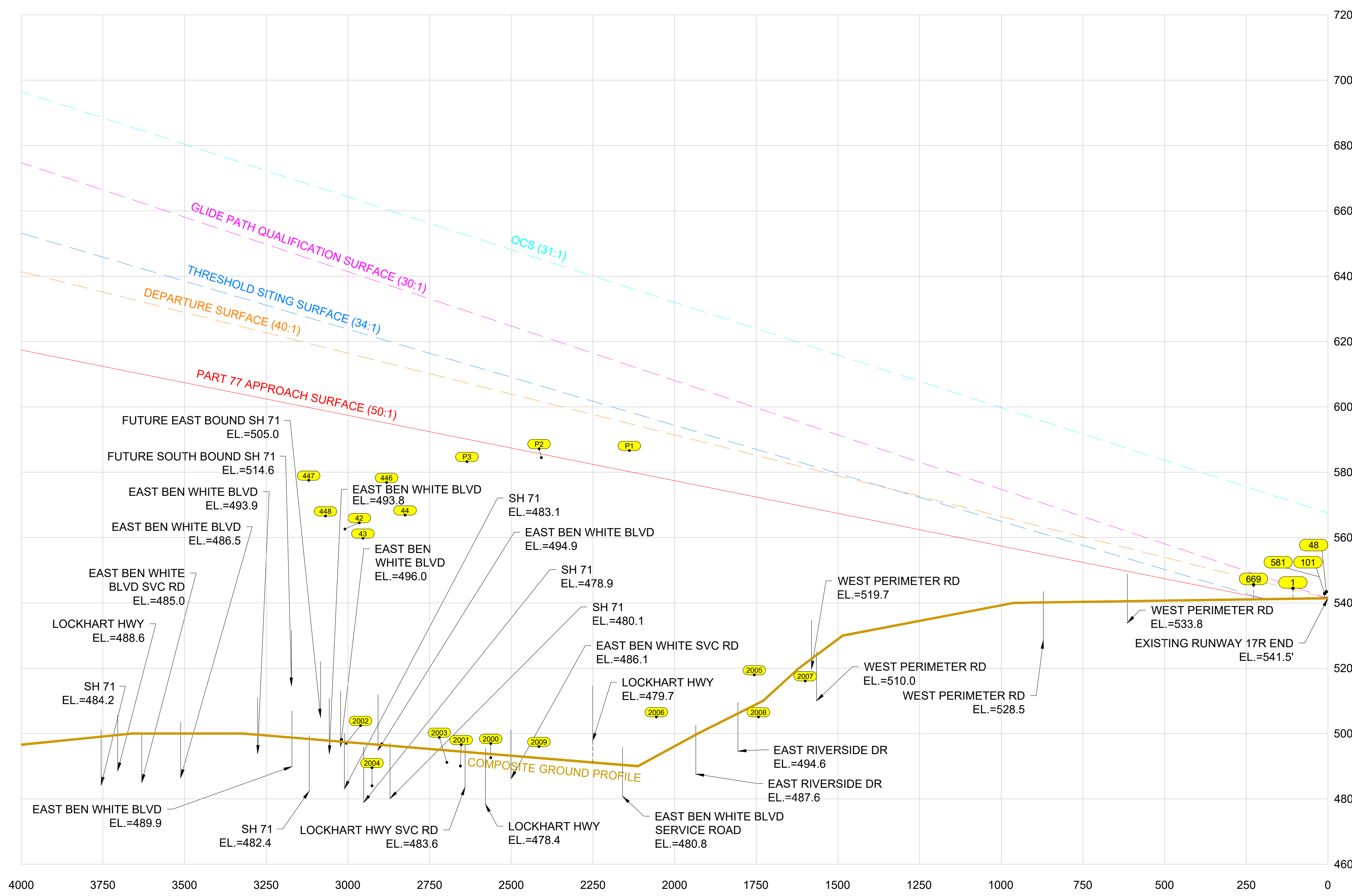
RUNWAY 17R APPROACH/DEPARTURE SURFACES

OBSTACLE ID	DESCRIPTION	DATE OF SURVEY	MSL (ft)	AGL (ft)	PART 77 APPROACH MSL (ft)		DEPARTURE MSL (ft)		THRESHOLD SITING SURFACE MSL (ft)		GQS MSL (ft)		OCS MSL (ft)		DISPOSITION	TRIGGERING EVENT EXPECTED DATE OF REMOVAL
					SURFACE ELEVATION	SURFACE PENETRATION	SURFACE ELEVATION	SURFACE PENETRATION	SURFACE ELEVATION	SURFACE PENETRATION	SURFACE ELEVATION	SURFACE PENETRATION	SURFACE ELEVATION	SURFACE PENETRATION		
1	SIGN	2016	544.5	3.24	541.2	N/A	541.2	<1	541.2	N/A	541.2	N/A	541.2	N/A	Fixed Function	Existing / TBD
42	POWER TRANSMISSION PYLON	2016	562.6	79.65	483.0	N/A	483.0	N/A	483.0	N/A	483.0	N/A	483.0	N/A	Fixed Function	Existing / TBD
43	POWER TRANSMISSION PYLON	2016	559.8	86.72	473.1	N/A	473.1	N/A	473.1	N/A	473.1	N/A	473.1	N/A	Fixed Function	Existing / TBD
44	POWER TRANSMISSION PYLON	2016	566.9	93.42	473.5	N/A	473.5	N/A	473.5	N/A	473.5	N/A	473.5	N/A	Fixed Function	Existing / TBD
48	NAVAID	2016	543.4	1.42	542.0	N/A	542.0	1.8	542.0	N/A	542.0	1.8	542.0	N/A	Fixed Function	Existing / TBD
101	RUNWAY LIGHT	2016	542.8	1.26	541.6	N/A	541.6	1.1	541.6	N/A	541.6	1	541.6	N/A	Fixed Function	Existing / TBD
446	POWER TRANSMISSION PYLON	2016	576.8	86.95	489.9	N/A	489.9	N/A	489.9	N/A	489.9	N/A	489.9	N/A	Fixed Function	Existing / TBD
447	POWER TRANSMISSION PYLON	2016	577.8	89.02	488.8	N/A	488.8	N/A	488.8	N/A	488.8	N/A	488.8	N/A	Fixed Function	Existing / TBD
448	POWER TRANSMISSION PYLON	2016	566.6	80.39	486.2	N/A	486.2	N/A	486.2	N/A	486.2	N/A	486.2	N/A	Fixed Function	Existing / TBD
581	RUNWAY LIGHT	2016	542.8	1.32	541.5	N/A	541.5	1.1	541.5	N/A	541.5	1	541.5	N/A	Fixed Function	Existing / TBD
669	SIGN	2016	545.5	3.74	541.8	3.6	541.8	N/A	541.8	2.7	541.8	N/A	541.8	N/A	Fixed Function	Existing / TBD
2000	FENCE	2016	492.9	8.00	494.9	N/A	494.9	N/A	494.9	N/A	494.9	N/A	494.9	N/A	Fixed Function	Existing / TBD
2001	FENCE	2016	490.0	8.00	492.0	N/A	492.0	N/A	492.0	N/A	492.0	N/A	492.0	N/A	Fixed Function	Existing / TBD
2002	FENCE	2016	497.0	8.00	499.0	N/A	499.0	N/A	499.0	N/A	499.0	N/A	499.0	N/A	Fixed Function	Existing / TBD
2003	FENCE	2016	491.2	8.00	493.2	N/A	493.2	N/A	493.2	N/A	493.2	N/A	493.2	N/A	Fixed Function	Existing / TBD
2004	FENCE	2016	484.0	8.00	476.0	N/A	476.0	N/A	476.0	N/A	476.0	N/A	476.0	N/A	Fixed Function	Existing / TBD
2005	FENCE	2016	517.9	8.00	509.9	N/A	509.9	N/A	509.9	N/A	509.9	N/A	509.9	N/A	Fixed Function	Existing / TBD
2006	FENCE	2016	505.1	8.00	497.1	N/A	497.1	N/A	497.1	N/A	497.1	N/A	497.1	N/A	Fixed Function	Existing / TBD
2007	FENCE	2016	516.1	8.00	508.1	N/A	508.1	N/A	508.1	N/A	508.1	N/A	508.1	N/A	Fixed Function	Existing / TBD
2008	FENCE	2016	505.1	8.00	497.1	N/A	497.1	N/A	497.1	N/A	497.1	N/A	497.1	N/A	Fixed Function	Existing / TBD
2009	FENCE	2016	496.0	8.00	488.0	N/A	488.0	N/A	488.0	N/A	488.0	N/A	488.0	N/A	Fixed Function	Existing / TBD
P1	POWER TRANSMISSION PYLON	2016	586.6	97.00	489.6	N/A	489.6	N/A	489.6	N/A	489.6	N/A	489.6	N/A	Fixed Function	Existing / TBD
P2	POWER TRANSMISSION PYLON	2016	584.5	97.00	487.5	N/A	487.5	N/A	487.5	N/A	487.5	N/A	487.5	N/A	Fixed Function	Existing / TBD
P3	POWER TRANSMISSION PYLON	2016	583.2	97.00	486.2	N/A	486.2	N/A	486.2	N/A	486.2	N/A	486.2	N/A	Fixed Function	Existing / TBD

NOTES:
 A. PER FAR PART 77.23(b), THE FOLLOWING TRAVERSE WAYS MUST BE INCREASED BY: 10' FOR PRIVATE ROAD, 15' FOR A (NON) INTERSTATE, 17' FOR AN INTERSTATE, AND 23' FOR (RAIL)ROADS.
 B. EACH ROADWAY OR RAILROAD IN THE OBSTACLE DATA SHEET SHOULD INCLUDE THE APPROPRIATE (P), (N), (I), (R) DESIGNATION AFTER THE DESCRIPTION.
 C. SOURCE: OBSTRUCTION DATA FROM 2017 IBB SURVEY BY AECOM

DRAWING LEGEND	
ITEM	EXISTING
PACS & SACS	⊗
LOC	⊙
NAVAIDS	★
RVR	⊛
PAPI	⊕
GLIDE SLOPE ANTENNA	⊖
WIND SOCK	⊙
ROTATING BEACON	★
DISTANCE MEASURING EQUIPMENT	■
AIRPORT PROPERTY LINE	— — — — —
GQS	— — — — —
OCS	— — — — —
PART 77 INNER APPROACH	— — — — —
ROFA	— — — — —
ROFZ	— — — — —
RPZ	— — — — —
RSA	— — — — —
RUNWAY CENTERLINE	— — — — —
TERPS	— — — — —
TSS	— — — — —
SECURITY FENCE	— — — — —
NAVAID CRITICAL AREA	⊗

RUNWAY 17R PROFILE VIEW

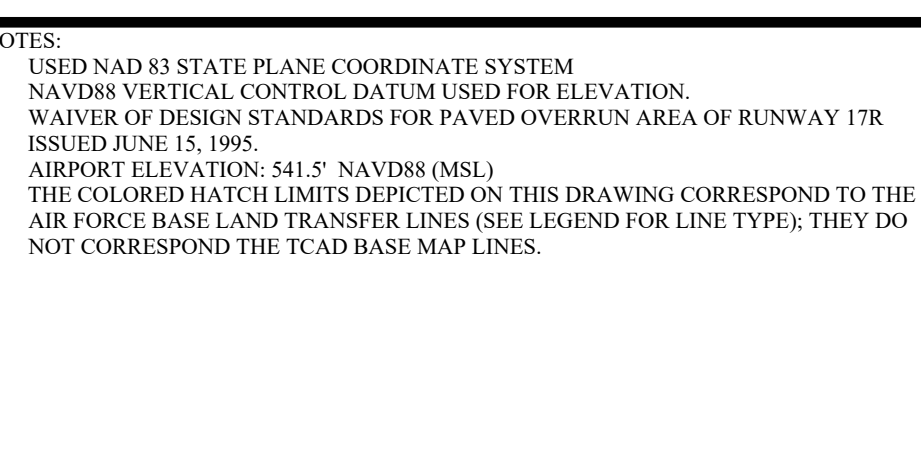


1. THE PREPARATION OF THIS DOCUMENT MAY HAVE BEEN SUPPORTED, IN PART, THROUGH A PLANNING GRANT FROM THE FEDERAL AVIATION ADMINISTRATION AS PROVIDED UNDER SECTION 505 OF THE AIRPORT AND AIRWAY IMPROVEMENT ACT OF 1982. THE CONTENTS DO NOT CONSTITUTE THE OFFICIAL VIEWS OR POLICY OF THE FAA. ACCEPTANCE OF THIS REPORT BY THE FAA DOES NOT IN ANY WAY CONSTITUTE A COMMITMENT ON THE PART OF THE UNITED STATES TO PARTICIPATE IN ANY DEVELOPMENT DEPICTED THEREIN, NOR DOES IT INDICATE THAT THE PROPOSED DEVELOPMENT IS ENVIRONMENTALLY ACCEPTABLE UNDER APPLICABLE LAWS.

2. THE FAA'S APPROVAL OF THIS AIRPORT LAYOUT PLAN (ALP) REPRESENTS ACCEPTANCE OF THE GENERAL LOCATION OF THE FACILITIES DEPICTED THEREIN. THE PRELIMINARY DESIGN PHASE, THE AIRPORT OWNER SHALL SUBMIT FOR FAA APPROVAL FINAL LOCATIONS, HEIGHTS, AND EXTERIOR FINISH OF ALL STRUCTURES. THE FAA'S CONCERN IS OBSTRUCTIONS, IMPACT ON ELECTRONIC FACILITIES, AND ADVERSE IMPACT ON CONTROLLER VIEW OF AIRCRAFT APPROACHES AND GROUND MOVEMENT AREAS WHICH COULD ADVERSELY AFFECT THE SAFETY, EFFICIENCY, OR UTILITY OF THE AIRPORT.



NOTES:
 1. USED NAD 83 STATE PLANE COORDINATE SYSTEM NAVD83 VERTICAL CONTROL DATUM USED FOR ELEVATION.
 2. WAIVER OF DESIGN STANDARDS FOR PAVED OVER RUN AREA OF RUNWAY 17R ISSUED JUNE 15, 1995.
 3. AIRPORT ELEVATION: 541.7' NAVD83 (MSL)
 4. THE COLORED HATCH LIMITS DEPICTED ON THIS DRAWING CORRESPOND TO THE AIR FORCE BASE LAND TRANSFER LINES (SEE LEGEND FOR LINE TYPES); THEY DO NOT CORRESPOND TO THE T-AD BASE MAP LINES.



APPROVAL
 AUSTIN-BERGSTRÖM INTERNATIONAL AIRPORT
 CITY OF AUSTIN AVIATION DEPARTMENT

JENNIFER WILLIAMS, PROJECT MANAGER DATE

FAA ASW-ADO APPROVAL BLOCK
 FEDERAL AVIATION ADMINISTRATION
 FORT WORTH AIRPORTS DISTRICT OFFICE

CONDITIONALLY APPROVED: MARCELO SANCHEZ, P.E. MANAGER, ASW-ADO
 DATE: MARCH 2, 2020

SUBJECT TO COMMENTS IN LETTER DATED: (NO COMMENTS)
 AIRSPACE STUDY NUMBER:

JOB NO.:	CS-
DRAWN BY:	TSP
CHECKED BY:	
COORD. CHECK:	
FILE NAME:	M3343-GI-1-02.dwg
DATE:	04MAR20
SCALE:	H:1"=200';V:1"=20'
NO.	1
DATE	04MAR20
ISSUE	4910-B107-3343
BY	L&B

GI-1-02
 6 OF 18

RUNWAY 17R PROTECTION ZONE-PLAN AND PROFILE