

RUNWAY 35L APPROACH/DEPARTURE SURFACES

OBSTACLE ID	DESCRIPTION	DATE OF SURVEY	MSL (ft)	AGL (ft)	PART 77 APPROACH MSL (ft)		DEPARTURE MSL (ft)		THRESHOLD SITING SURFACE MSL (ft)		GQS MSL (ft)		OCS MSL (ft)		DISPOSITION	TRIGGERING EVENT EXPECTED DATE OF REMOVAL
					SURFACE ELEVATION	SURFACE PENETRATION	SURFACE ELEVATION	SURFACE PENETRATION	SURFACE ELEVATION	SURFACE PENETRATION	SURFACE ELEVATION	SURFACE PENETRATION	SURFACE ELEVATION	SURFACE PENETRATION		
60	TREE	2016.0000	541.7	86.96	454.7	N/A	454.7	1.1	454.7	N/A	454.7	N/A	454.7	N/A	Topped	Existing / 01MAR2018
61	TREE	2016	545.4	92.92	452.5	23.7	452.5	10.1	452.5	7.6	452.5	N/A	452.5	N/A	Topped	Existing / 01MAR2018
62	TREE	2016	544.0	88.52	455.4	N/A	455.4	6.0	455.4	N/A	455.4	N/A	455.4	N/A	Topped	Existing / 01MAR2018
577	TREE	2016	541.3	28.70	512.6	1.1	512.6	N/A	512.6	N/A	512.6	N/A	512.6	N/A	Topped	Existing / 01MAR2018
582	RUNWAY LIGHT	2016	488.8	1.88	487.1	N/A	487.1	1.2	487.1	N/A	487.1	1.2	487.1	N/A	Fixed Function	Existing TBD
583	RUNWAY LIGHT	2016	486.7	1.81	487.1	N/A	487.1	1.2	487.1	N/A	487.1	1.1	487.1	N/A	Fixed Function	Existing TBD
587	TREE	2016	543.5	78.81	464.7	N/A	464.7	6.7	464.7	N/A	464.7	N/A	464.7	N/A	Topped	Existing / 01MAR2018
589	TREE	2016	542.9	94.61	448.3	18.7	448.3	4.5	448.3	1.3	448.3	N/A	448.3	N/A	Topped	Existing / 01MAR2018
599	TREE	2016	525.3	73.05	452.3	1.9	452.3	N/A	452.3	N/A	452.3	N/A	452.3	N/A	Topped	Existing / 01MAR2018
601	TREE	2016	524.8	66.79	458.0	2.9	458.0	N/A	458.0	N/A	458.0	N/A	458.0	N/A	Topped	Existing / 01MAR2018
602	TREE	2016	524.4	64.92	459.5	3.4	459.5	N/A	459.5	N/A	459.5	N/A	459.5	N/A	Topped	Existing / 01MAR2018
603	TREE	2016	522.0	53.30	468.7	1.5	468.7	N/A	468.7	N/A	468.7	N/A	468.7	N/A	Topped	Existing / 01MAR2018
605	TREE	2016	542.5	85.30	457.2	18.6	457.2	4.4	457.2	1.3	457.2	N/A	457.2	N/A	Topped	Existing / 01MAR2018
606	TREE	2016	539.7	87.36	452.3	17.1	452.3	3.2	452.3	<1	452.3	N/A	452.3	N/A	Topped	Existing / 01MAR2018
607	TREE	2016	528.0	75.60	452.4	5.6	452.4	N/A	452.4	N/A	452.4	N/A	452.4	N/A	Topped	Existing / 01MAR2018
608	TREE	2016	521.4	54.98	466.4	2.3	466.4	N/A	466.4	N/A	466.4	N/A	466.4	N/A	Topped	Existing / 01MAR2018
610	TREE	2016	521.2	48.32	472.9	3.1	472.9	N/A	472.9	N/A	472.9	N/A	472.9	N/A	Topped	Existing / 01MAR2018
611	TREE	2016	520.2	54.36	465.9	1.7	465.9	N/A	465.9	N/A	465.9	N/A	465.9	N/A	Topped	Existing / 01MAR2018
612	TREE	2016	525.7	71.46	454.2	6.5	454.2	N/A	454.2	N/A	454.2	N/A	454.2	N/A	Topped	Existing / 01MAR2018
613	TREE	2016	520.7	52.66	468.0	3.1	468.0	N/A	468.0	N/A	468.0	N/A	468.0	N/A	Topped	Existing / 01MAR2018
618	TREE	2016	522.9	67.45	455.4	5.4	455.4	N/A	455.4	N/A	455.4	N/A	455.4	N/A	Topped	Existing / 01MAR2018
739	TREE	2016	542.0	88.42	453.6	N/A	453.6	3.9	453.6	N/A	453.6	N/A	453.6	N/A	Topped	Existing / 01MAR2018
2020	FENCE	2016	487.8	8.00	479.8	N/A	479.8	N/A	479.8	N/A	479.8	N/A	479.8	N/A	Fixed Function	Existing TBD
2021	FENCE	2016	487.0	8.00	479.0	N/A	479.0	N/A	479.0	N/A	479.0	N/A	479.0	N/A	Fixed Function	Existing TBD
2022	FENCE	2016	483.0	8.00	475.7	N/A	475.7	N/A	475.7	N/A	475.7	N/A	475.7	N/A	Fixed Function	Existing TBD
2023	FENCE	2016	482.9	8.00	474.9	N/A	474.9	N/A	474.9	N/A	474.9	N/A	474.9	N/A	Fixed Function	Existing TBD
2024	FENCE	2016	482.1	8.00	474.1	N/A	474.1	N/A	474.1	N/A	474.1	N/A	474.1	N/A	Fixed Function	Existing TBD
2025	FENCE	2016	480.5	8.00	472.5	N/A	472.5	N/A	472.5	N/A	472.5	N/A	472.5	N/A	Fixed Function	Existing TBD
2026	FENCE	2016	470.0	8.00	462.0	N/A	462.0	N/A	462.0	N/A	462.0	N/A	462.0	N/A	Fixed Function	Existing TBD

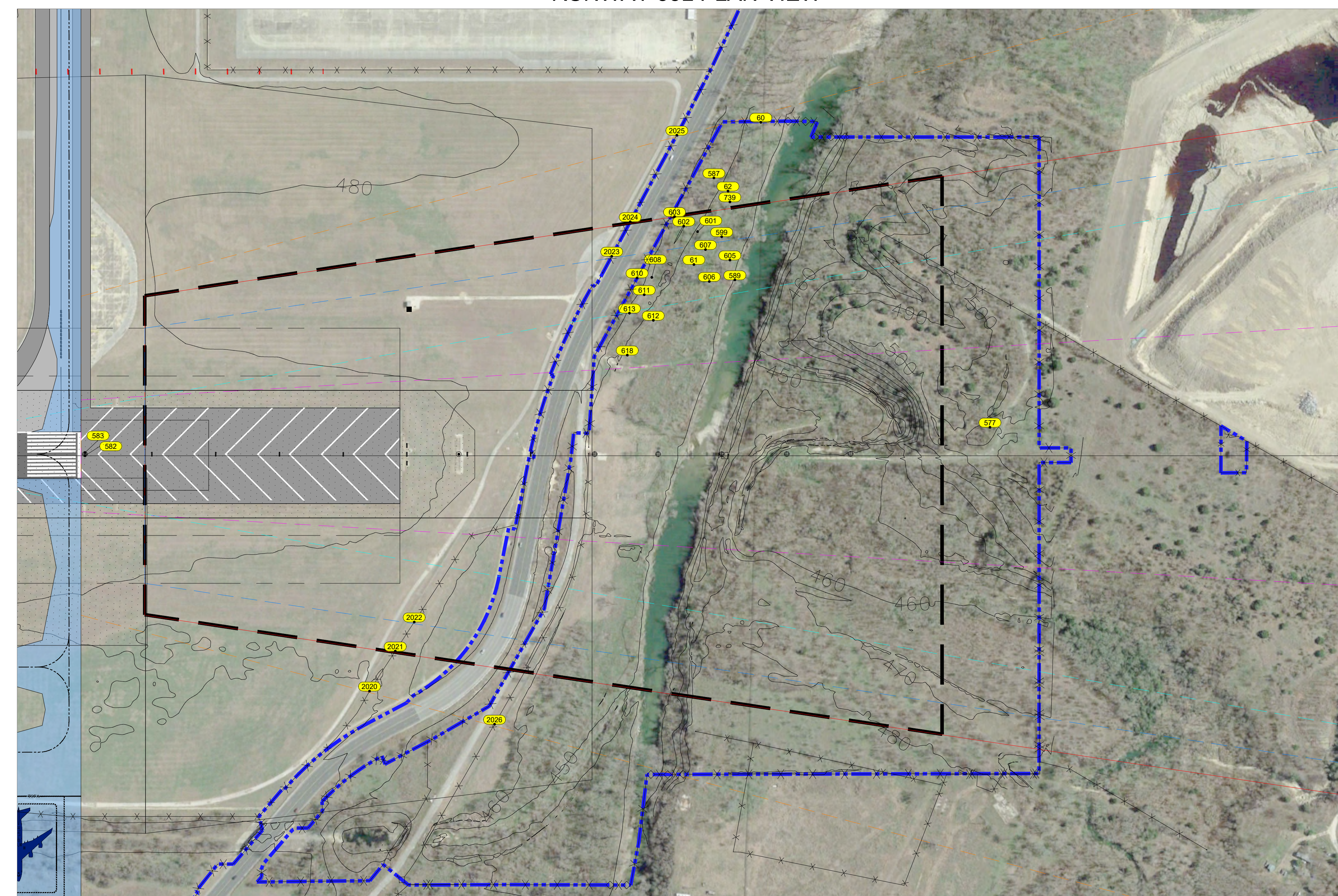
* FAA Airspace Determination Required

NOTES:

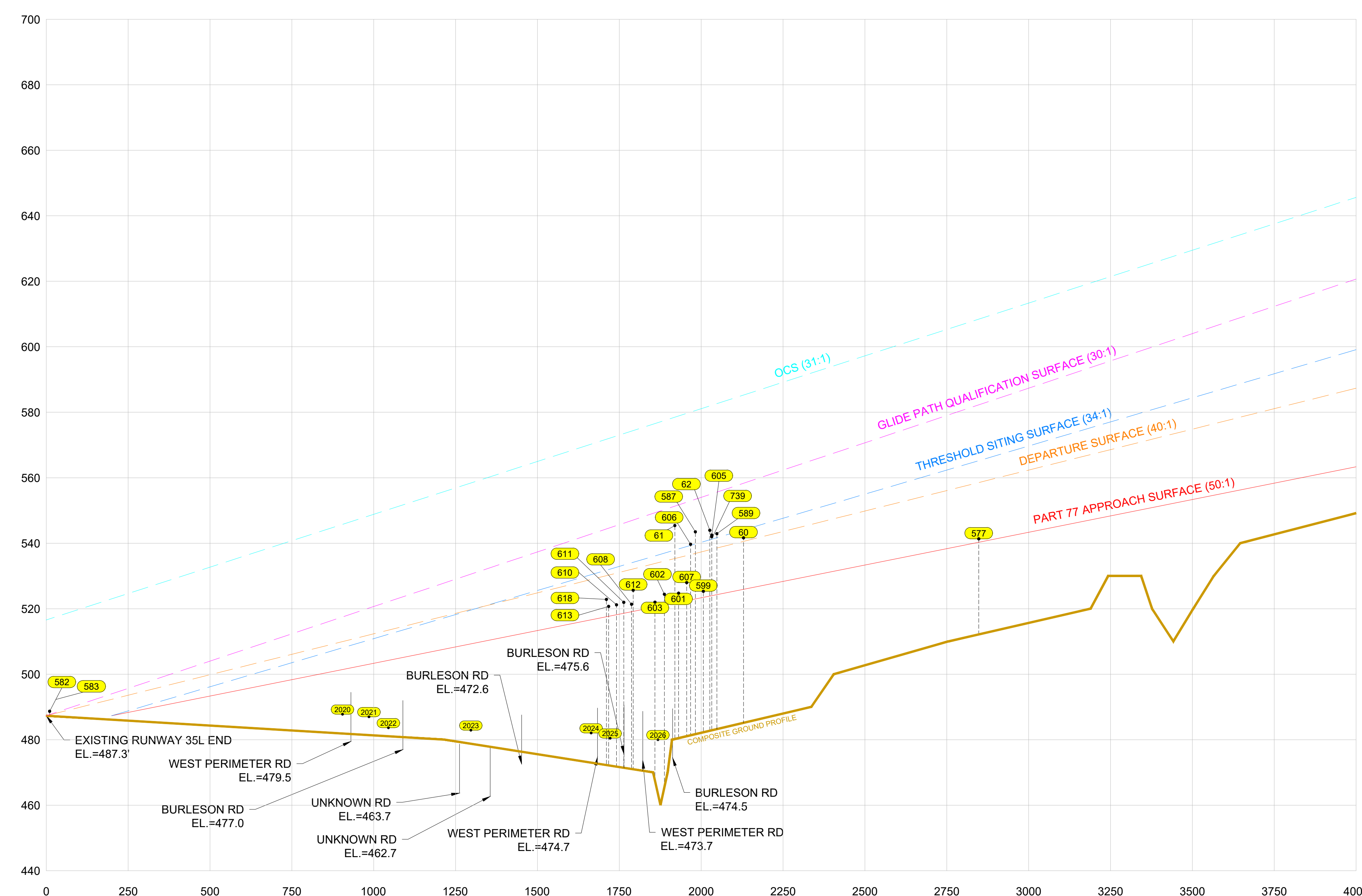
- A. PER FAR PART 77.23(b), THE FOLLOWING TRAVERSE WAYS MUST BE INCREASED BY: 10' FOR A (PRIVATE ROAD, 15' FOR AN (NON INTERSTATE, 17' FOR AN (INTERSTATE, AND 23' FOR (RAILROADS).
- B. EACH ROADWAY OR RAILROAD IN THE OBSTACLE DATA SHEET SHOULD INCLUDE THE APPROPRIATE (P), (N), (O), OR (R) DESIGNATION AFTER THE DESCRIPTION.
- C. SOURCE: OBSTRUCTION DATA FROM 2017 188 SURVEY BY AECOM

ITEM	EXISTING
PACS & SACS	⊗
LOC	○
NAVAIDS	★
RVR	⊕
PAPI	⊙
GLIDE SLOPE ANTENNA	⊕
WIND SOCK	⊕
ROTATING BEACON	★
DISTANCE MEASURING EQUIPMENT	■
AIRPORT PROPERTY LINE	—
GQS	—
OCS	—
PART 77 INNER APPROACH	—
ROFA	—
ROFZ	—
RFZ	—
RSA	—
RUNWAY CENTERLINE	—
TERPS	—
TSS	—
SECURITY FENCE	—
NAVAID CRITICAL AREA	—

RUNWAY 35L PLAN VIEW



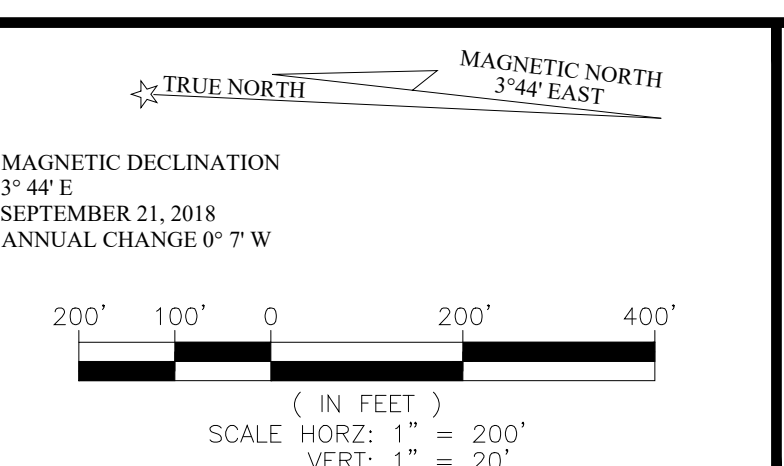
RUNWAY 35L PROFILE VIEW



DISCLAIMER:
 1. THE PREPARATION OF THIS DOCUMENT MAY HAVE BEEN SUPPORTED, IN PART, THROUGH A PLANNING GRANT FROM THE FEDERAL AVIATION ADMINISTRATION AS PROVIDED UNDER SECTION 505 OF THE AIRPORT AND AIRWAY IMPROVEMENT ACT OF 1982. THE CONTENTS DO NOT NECESSARILY REFLECT THE OFFICIAL VIEWS OR POLICY OF THE FAA. ACCEPTANCE OF THIS REPORT BY THE FAA DOES NOT IN ANY WAY CONSTITUTE A COMMITMENT ON THE PART OF THE UNITED STATES TO PARTICIPATE IN ANY DEVELOPMENT DEPICTED THEREIN, NOR DOES IT INDICATE THAT THE PROPOSED DEVELOPMENT IS ENVIRONMENTALLY ACCEPTABLE WITH APPROPRIATE PUBLIC LAWS.
 2. THE FAA'S APPROVAL OF THIS AIRPORT LAYOUT PLAN (ALP) REPRESENTS ACCEPTANCE OF THE GENERAL LOCATION OF THE FACILITIES DEPICTED, DURING THE PRELIMINARY DESIGN PHASE. THE AIRPORT OWNER SHALL SUBMIT FOR FAA APPROVAL FINAL LOCATIONS, HEIGHTS, AND EXTERIOR FINISH OF ALL STRUCTURES. THE FAA'S CONCERNS ARE OBSTRUCTIONS, IMPACT ON ELECTRONIC FACILITIES, AND ADVERSE IMPACT ON CONTROLLER VIEW OF AIRCRAFT APPROACHES AND GROUND MOVEMENT AREAS WHICH COULD ADVERSELY AFFECT THE SAFETY, EFFICIENCY, OR UTILITY OF THE AIRPORT.



NOTES:
 1. USED NAD 83 STATE PLANE COORDINATE SYSTEM NAVD83 VERTICAL CONTROL DATUM USED FOR ELEVATION.
 2. WAIVER OF DESIGN STANDARDS FOR PAVED OVER RUN AREA OF RUNWAY 17R ISSUED JUNE 15, 1995.
 3. AIRPORT ELEVATION: 541.5 NAVD83 (MSL)
 4. THE COLORED HATCH LIMITS DEPICTED ON THIS DRAWING CORRESPOND TO THE AIR FORCE BASE LAND TRANSFER LINES (SEE LEGEND FOR LINE TYPES); THEY DO NOT CORRESPOND TO THE T-AD BASE MAP LINES.



APPROVAL
 AUSTIN-BERGSTROM INTERNATIONAL AIRPORT
 CITY OF AUSTIN AVIATION DEPARTMENT

FAA ASW-ADO APPROVAL BLOCK
 FEDERAL AVIATION ADMINISTRATION
 FORT WORTH AIRPORTS DISTRICT OFFICE
 CONDITIONALLY APPROVED: MARCELO SANCHEZ, P.E.
 MANAGER, ASW-ADO
 DATE: MARCH 2020
 SUBJECT TO COMMENTS IN LETTER DATED: (NO COMMENTS)
 AIRSPACE STUDY NUMBER:

JOB NO.:	CS
DRAWN BY:	TSP
CHECKED BY:	
COORD. CHECK:	
FILE NAME:	M3343-GI-1-03.dwg
DATE:	04MAR20
SCALE:	H:1"=200'; V:1"=20'
NO.	1
DATE	04MAR20
ISSUE	4910-B107-3343
BY	L&B



RUNWAY 35L PROTECTION ZONE-PLAN AND PROFILE

GI-1-03
 7 OF 18