



Options For A New Runway At ABIA

Runway development is a significant investment in the growth of ABIA.

It takes at least seven years to build a runway, including design and construction. Aviation planners considered more than a dozen alternatives to support future demand while considering impacts to the surrounding area.

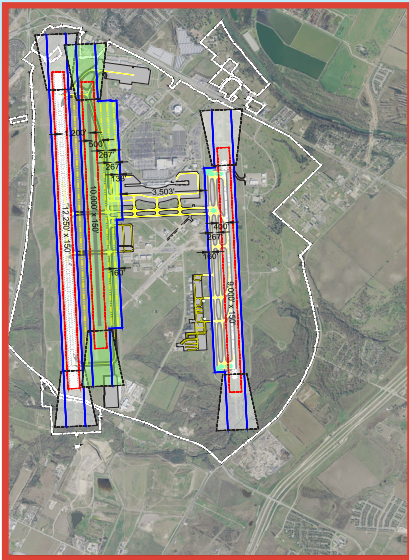
GOAL: PLAN FOR ADDITIONAL CAPACITY FOR FLIGHTS AND AIRLINE SERVICE



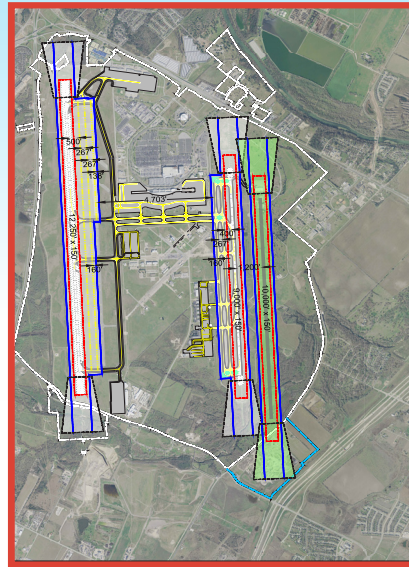


Runway Shortlisted Alternatives

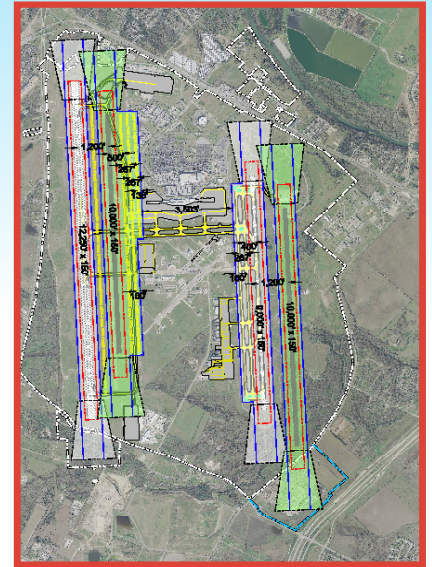
**Runway Alternative 2:
CLOSELY-SPACED WEST RUNWAY
SCORE = 9**



**Runway Alternative 1:
CLOSELY-SPACED EAST RUNWAY
SCORE = 7**

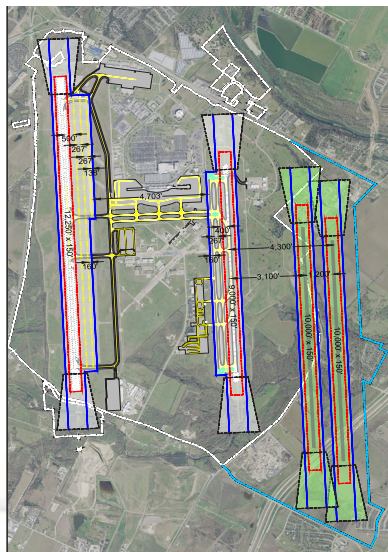


**Runway Alternative 4:
CLOSELY-SPACED EAST & WEST RUNWAY
SCORE = 5**

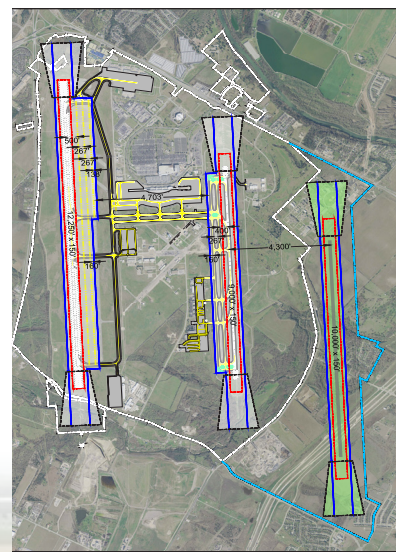


Final Shortlist = 

**Runway Alternative 12:
DUAL FAR EAST RUNWAYS
SCORE = 4**

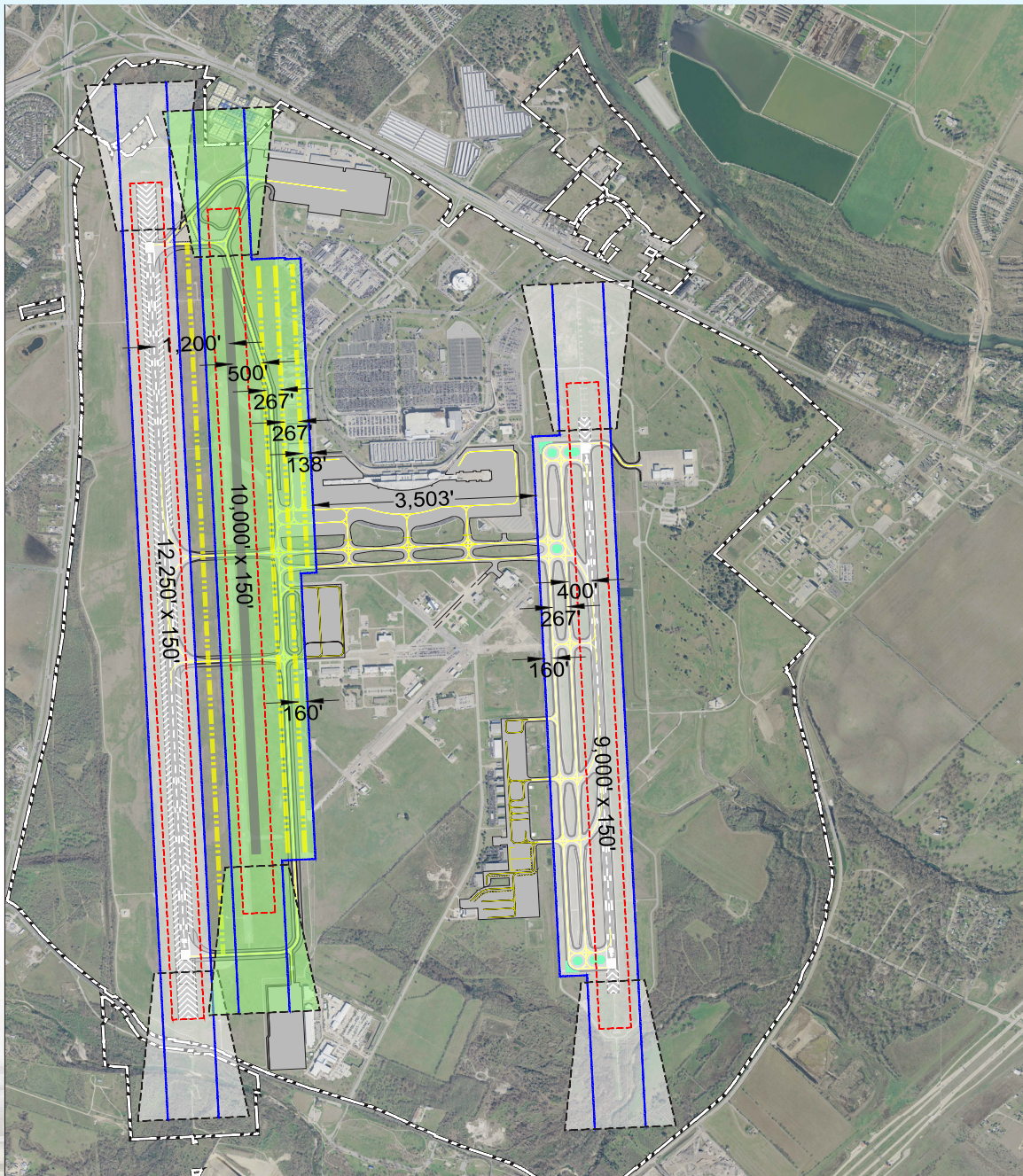


**Runway Alternative 3:
FAR-EAST RUNWAY
SCORE = 4**





Preferred Runway Alternative 2: Closely Spaced West Runway Score = 9










How To Select A Location For A New Terminal

Passenger terminal facilities at ABIA will also require expansion. Although a new South Terminal was added in 2017 and a 90,000-sf expansion is currently being added to the Barbara Jordan Terminal, forecasts predict an additional 28 gates are needed by the year 2040.

**GOAL: INCREASE ADDITIONAL FACILITY
SPACE AND GATES FOR EXPECTED
GROWTH**

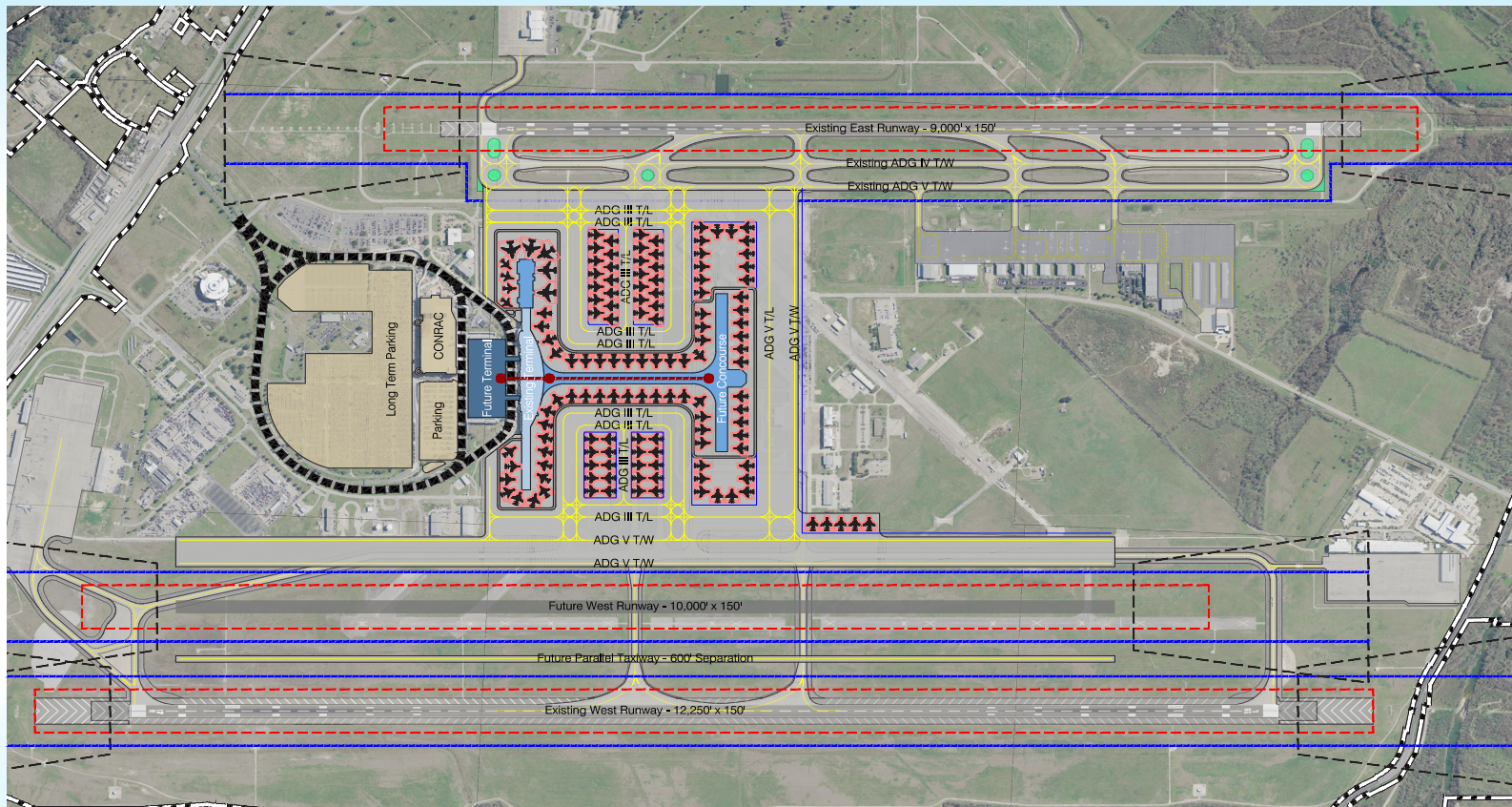
- 
Air Traffic Control
Flexibility
- 
Passenger
Movement
- 
General Aviation
Impacts
- 
Fuel Storage
Impacts
- 
Impacts on Current
CIP Projects

- 
Maintains ABIA
Experience
- 
Intuitive
Wayfinding
- 
Flexible Gate
Growth
- 
New Central
Plant
- 
Operational
Flexibility



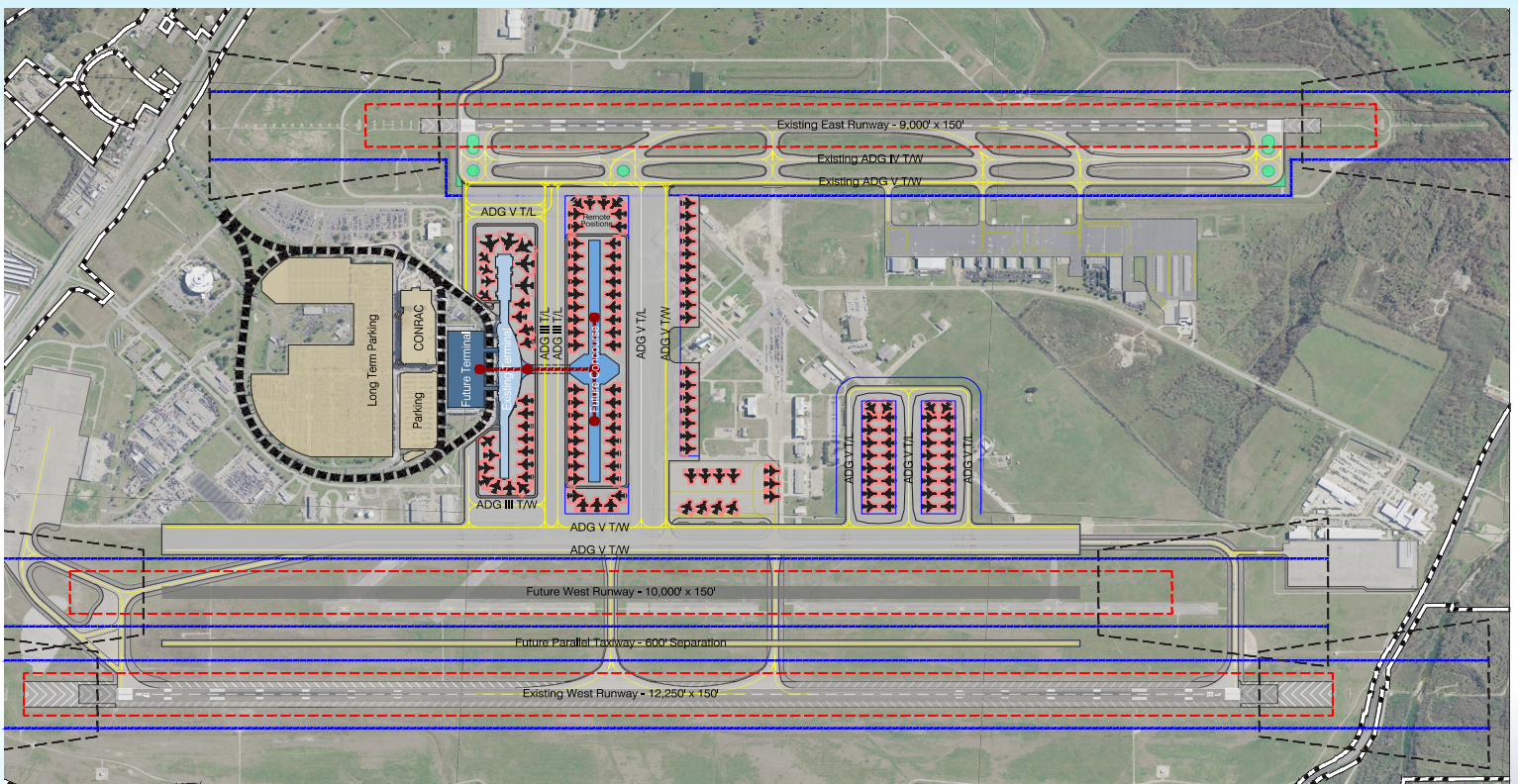


Terminal Alternative 3: New North Terminal with South Concourse



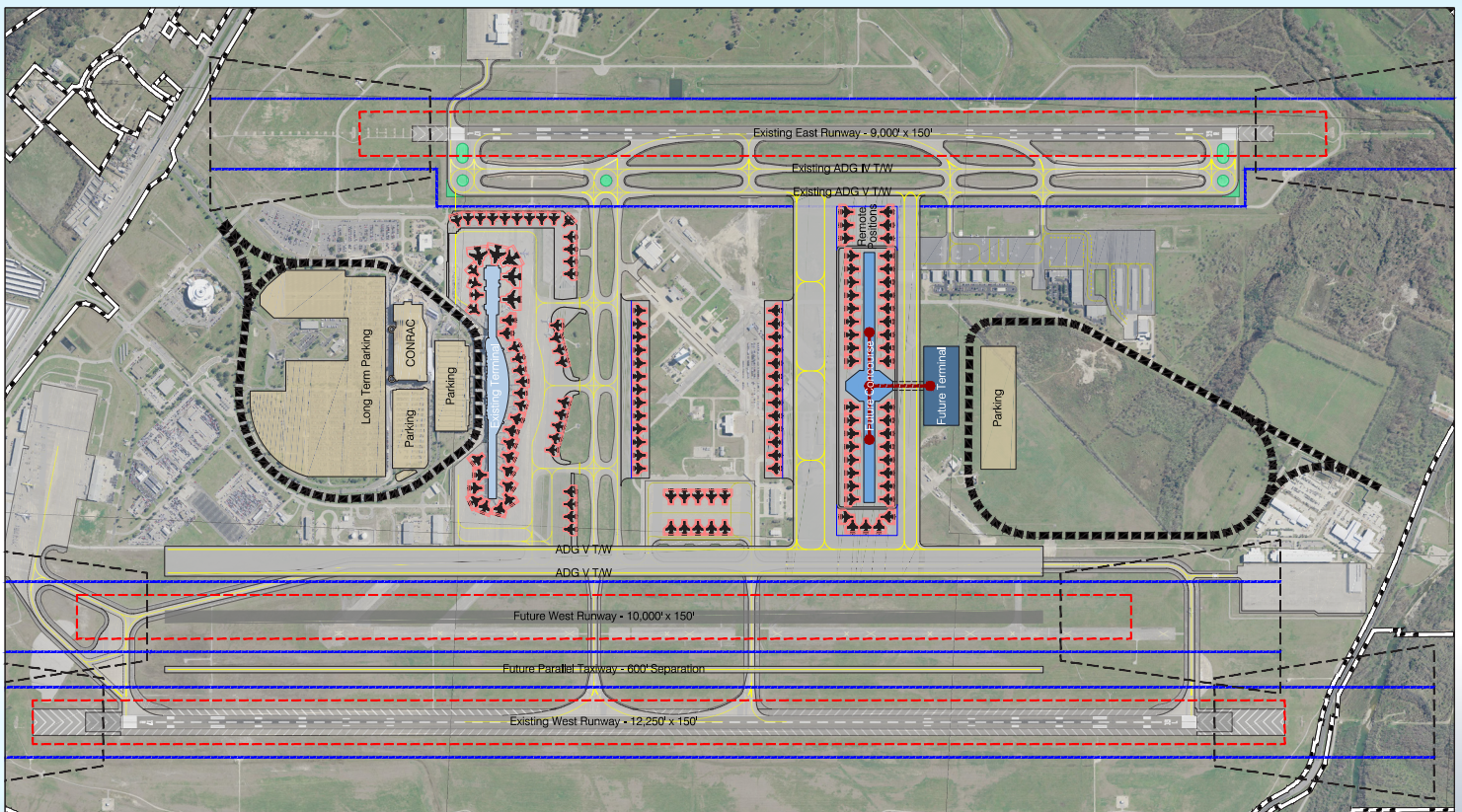


Terminal Alternative 4: New North Terminal with Satellite Concourse





Terminal Alternative 5: New South Terminal With Satellite Concourse





Ideas To Improve Mobility Around ABIA

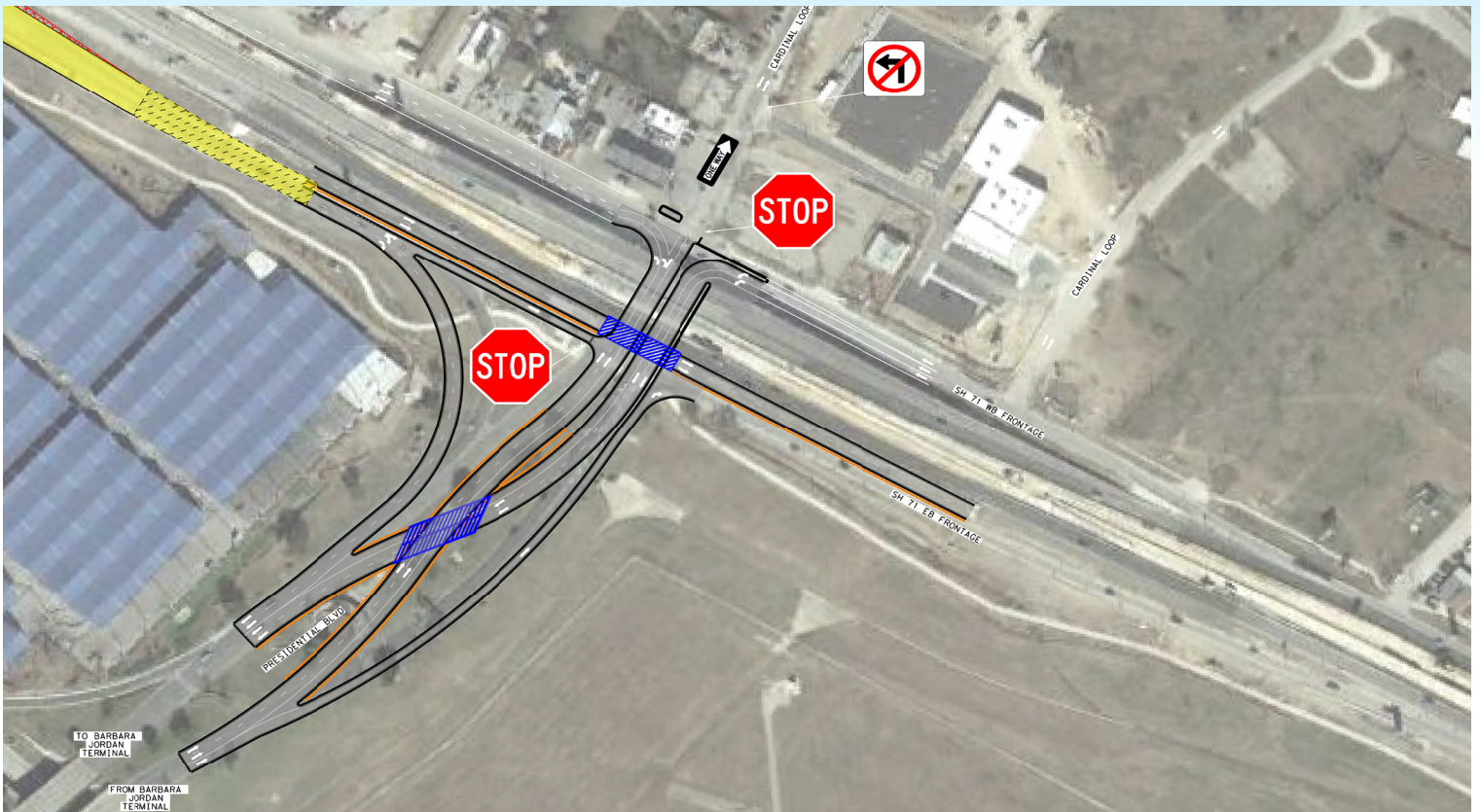
Mobility on and around the airport is essential to improving the customer experience. The amount of cars entering and leaving is expected to double to 40,000 vehicles by the year 2037.

GOAL: INCREASE MOBILITY ON AND AROUND CAMPUS, WITH MINIMAL IMPACT TO THE SURROUNDING ROADWAYS

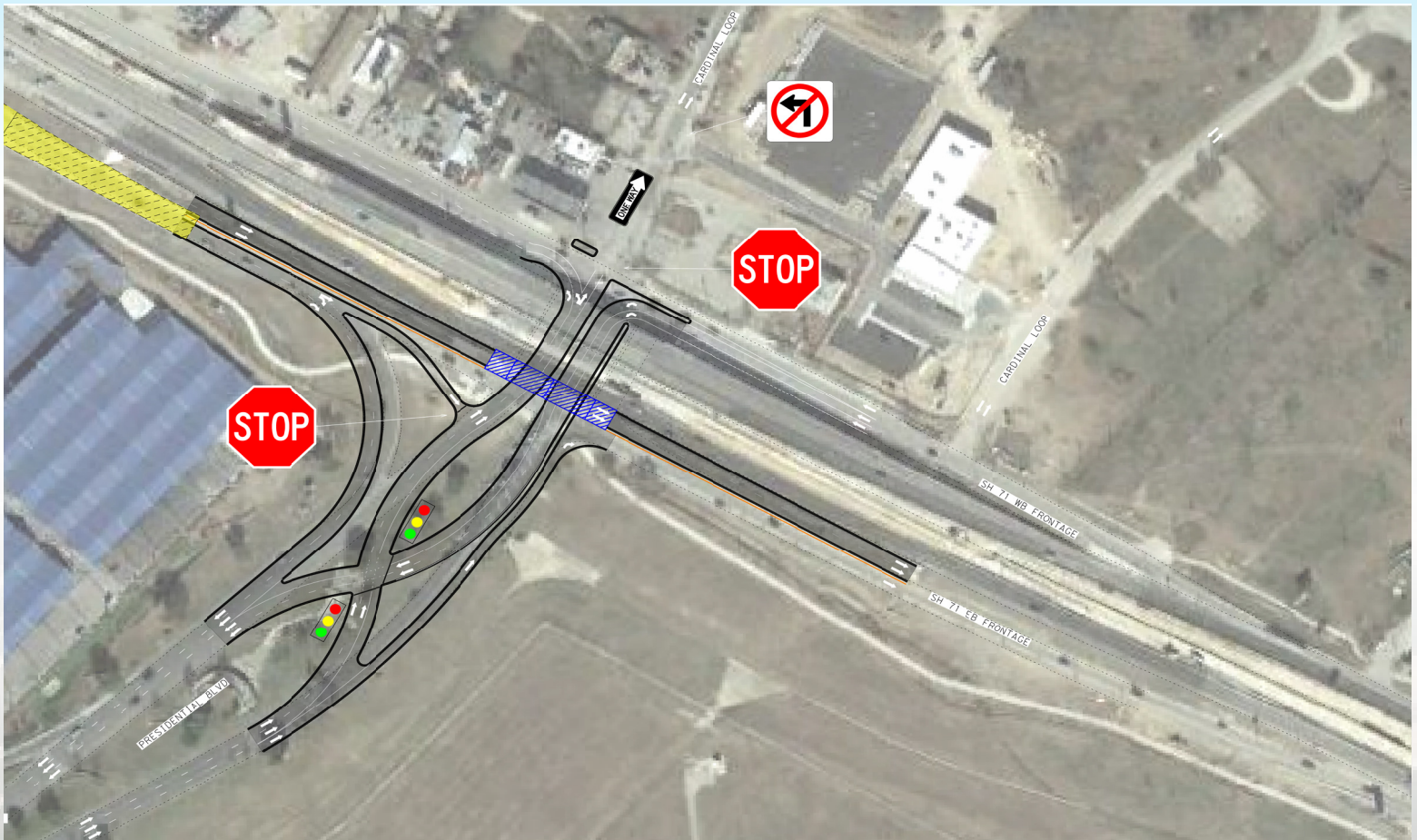




Roadway Alternative 1: Braided Left Turn



Roadway Alternative 2: Diverging Diamond





Roadway Alternative 6: Relocation Of SH 71 To The North

