

ENVISIONING AUSTIN'S **Airport of the Future**

ABIA 2040 Master Plan



Austin-Bergstrom
International Airport

Public Workshop #1
October 12, 2017



WHAT IS THE PURPOSE OF TODAY'S WORKSHOP?



Educate
& Inform



Solicit
Input



Answer
Questions

WHAT IS A MASTER PLAN?



The ABIA 2040 Master Plan
is a vision for the future of the airport.

It is a new master plan.

The Master Plan addresses **emerging technologies**,
future **facilities needs**, and the cost
of anticipated **development**.

It will be completed
by the fall of 2018.

TEN ELEMENTS OF A MASTER PLAN

- 1) Sustainability
- 2) Public Involvement
- 3) Environmental Considerations
- 4) Existing Conditions
- 5) Aviation Forecasts
- 6) Facility Requirements
- 7) Alternatives Development Analysis
- 8) Airport Layout Plans
- 9) Facilities Implementation Plan
- 10) Financial Feasibility Analysis

ABIA FACES GROWTH PRESSURES

12.4 M

Passengers
in 2016



Because our passenger growth rate has exceeded the national average, the projects included in the ABIA 2003 Master Plan were completed ahead of schedule.

AIRPORTS ALREADY SIZE OF WHERE ABIA IS HEADED

WASHINGTON, DC



SALT LAKE CITY



AIRPORTS ALREADY SIZE OF WHERE ABIA IS HEADED

PHILADELPHIA



FT. LAUDERDALE



HOW CAN I INFLUENCE THE PLAN?

PUBLIC INPUT OPPORTUNITIES

4 Public Workshops
&
Technical Advisory
Committee
&
Project Advisory
Committee
&
Airport Advisory
Commission
&
City Council



SERVE

as as sounding board



GIVE US

your ideas, opinions
& concerns



SHARE INFO

with Neighbors
& Networks

WHAT APPROVALS ARE NEEDED?



Federal Aviation
Administration (FAA)

Approval of
Forecasted Growth,
Technical Analysis &
Future Layout



City of Austin
City Council Adoption

HOW LONG WILL THIS TAKE?



Background **on ABIA**

QUICK FACTS ABOUT ABIA



35th Largest
Airport in US



\$2.4 B+
Economic Impact



40,000+
Jobs Supported

**ABIA opened in 1999 and serves
the Central Texas region.**

ABIA SERVICE AREA



A majority of ABIA's passengers come from the Travis County region shown in dark blue.

ABIA CAMPUS

2

Terminals
(South & Barbara Jordan)

2

Runways

36

Airport Gates
(including expansion)

4,200

Acres of Land

13,882

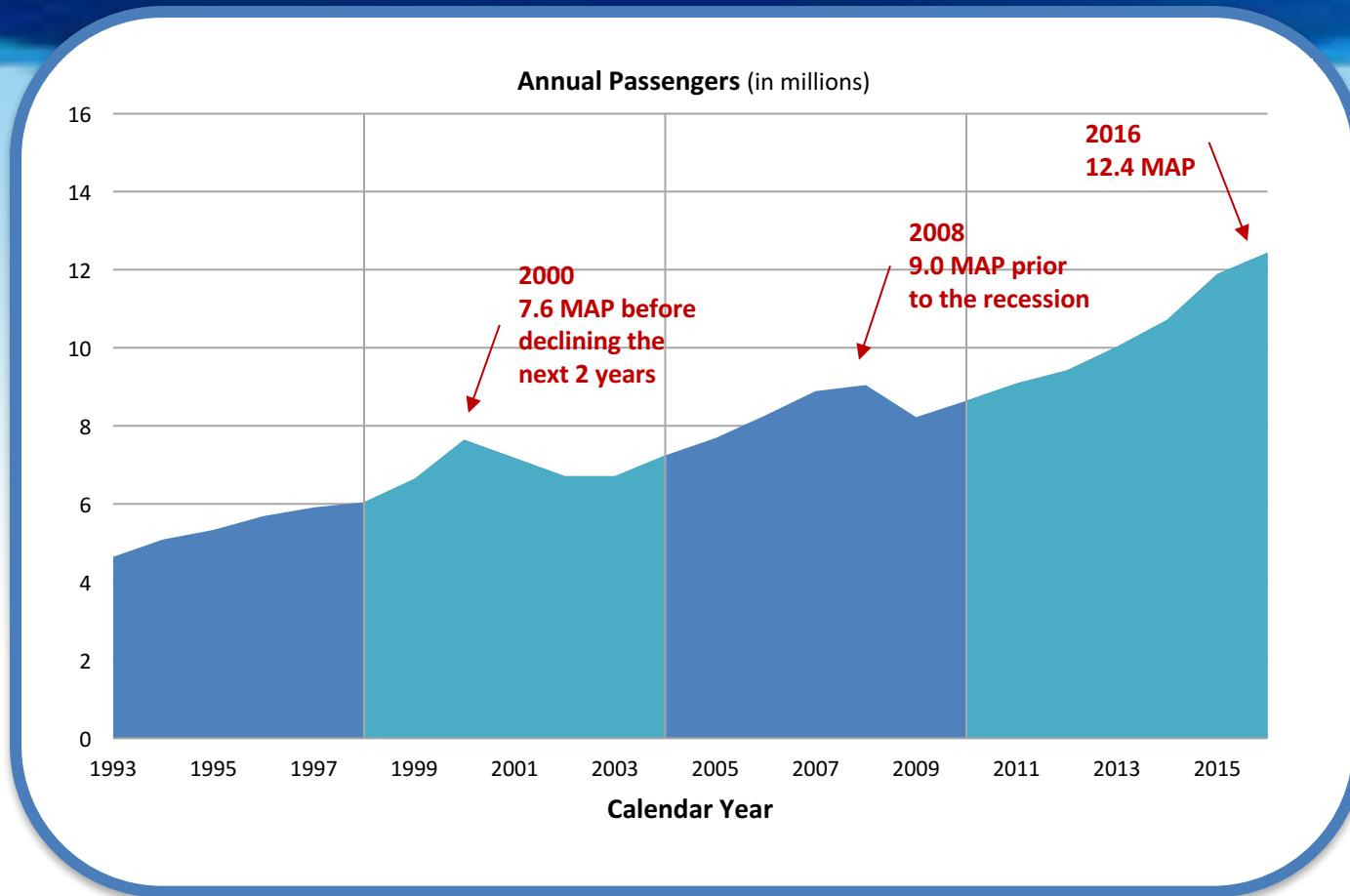
Parking Spaces
(including new garage)

227,000_{sf}

Cargo Building



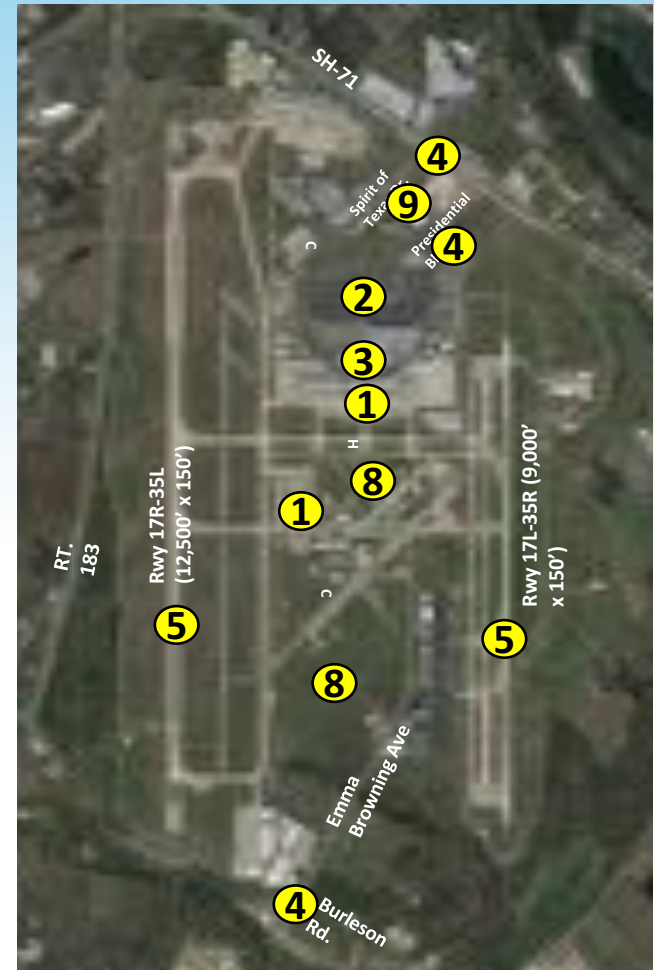
GROWTH SINCE 1999



Since 1999 passenger growth at ABIA has tripled at 3.8% average annual growth. The national average annual passenger growth rate is 2.1%.

WHAT ARE THE IDENTIFIED ISSUES AT ABIA?

1. Terminal Needs
 - Passengers
 - Baggage
 - Safety/Security
 - Concessions
2. Vehicle Parking
3. Curbside Pick-up/Drop-off
4. Landside Roadways
5. Airfield Operations (*New Runway*)
6. Sustainability Initiatives
7. Environmental (*noise, land acquisition, etc.*)
8. Support Facilities Development
9. Commercial Development



CURRENT CONSTRUCTION



9-Gate Terminal Expansion

90,000 square feet



Parking & Admin Building

80,000 square feet
6,000 new parking spaces



New Maintenance Facility

16.4 acres

Currently three projects
are in design or under construction.
They will be completed by 2020.

Master Plan Process

We Are Here



Over the next 18-months planners will use data, analysis, and input from stakeholders and the public to plan for new ways to expand and improve ABIA.

DATA-DRIVEN ANALYSIS

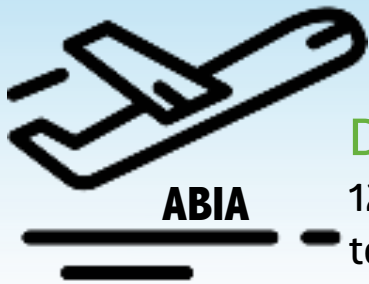
Aviation Forecasting:

an estimate of future airport activity
for both passenger & aircraft operations.

It is the foundation of the
ABIA 2040 Master Plan.

- ✓ Passengers (*domestic & international*)
- ✓ Commercial aircraft operations (*domestic & international*)
- ✓ Freighter (*all-cargo aircraft*)
- ✓ Air taxi aircraft
- ✓ General aviation aircraft and military (*aircraft & helicopter*)
- ✓ Annual and peak hour demands

EXPECTED PASSENGER GROWTH



DOMESTIC: 110% increase

12.2 million (2016)
to 25.6 million (2037)



INTERNATIONAL: 263% increase

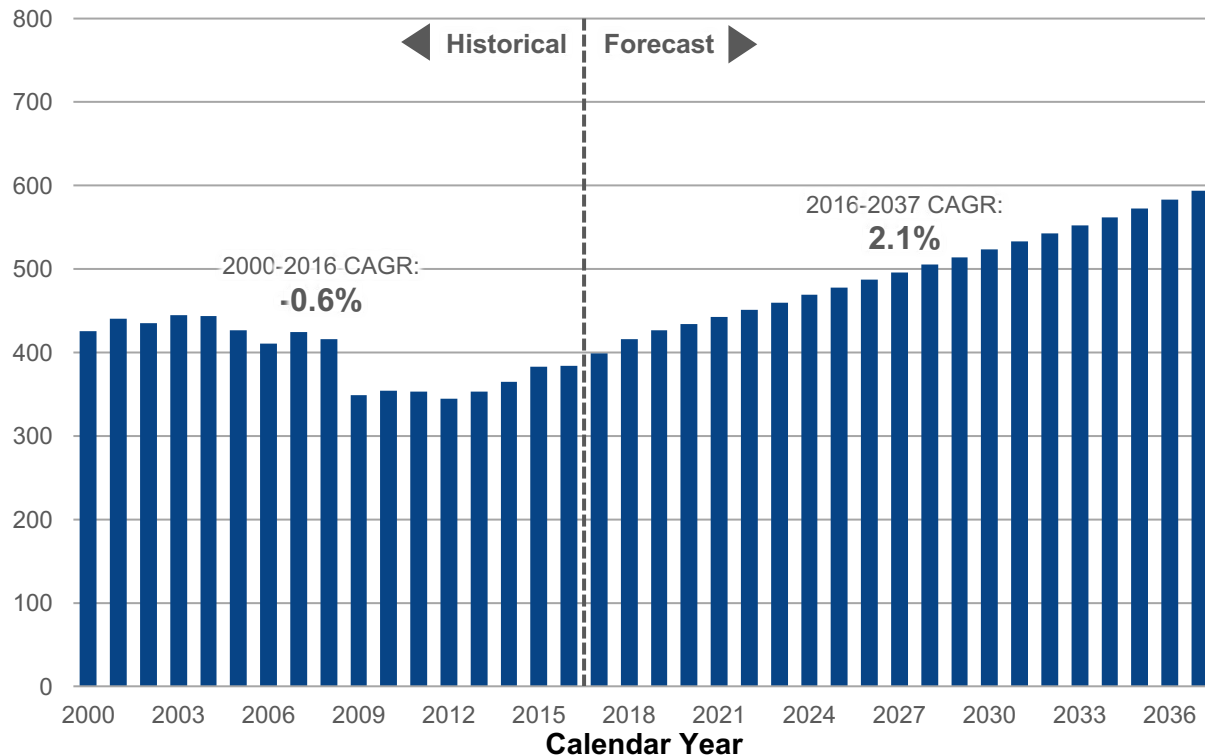
275,294 (2016) to 1 million (2037)

26.7 million

115% TOTAL increase
12.4 million (2016) to
26.7 million (2037)

TOTAL AIRCRAFT OPERATIONS

Annual Arrivals / Departures
(in thousands)



ABIA operations is forecast to grow by 2.1 percent, while passenger growth is forecast to grow by 3.8 percent.

Future Focused Solutions

FUTURE FOCUSED SOLUTIONS



Autonomous Vehicles



TNC (Rideshare)



Bike Trail



Rail

The Master Plan addresses multiple modes of public access to and from the airport to help to alleviate roadway and terminal curb congestion.

FUTURE FOCUSED SOLUTIONS



Common Use Clubs



Internal GPS Mapping System



Concessions/ Technology
Integration



WiFi

The Master Plan addresses passenger Amenities at ABIA to enhance the customer's experience.

FUTURE FOCUSED SOLUTIONS



Self Bag Tag



Baggage Storage



Off-Airport Baggage Collection

A goal of the Master Plan is to recommend solutions that improve the baggage handling system and operations to enhance the customer's experience.

FUTURE FOCUSED SOLUTIONS



Security Checkpoint



Biometric Security Gates

We want to provide increased security at ABIA through the use of new technology.

Public Visioning Breakout Groups

Group Discussion

DISCUSSION GROUPS



We are now going to create
Small Discussion Groups
to gather your input
on the Master Plan.

WHAT ARE THE NEXT STEPS?

- 1) FAA approval of the Aviation Forecasts
- 2) Development of future facility requirements
- 3) Develop airfield, terminal and landside alternatives for evaluation

4) Public Workshops

#1 – Visioning – October 2017

#2 – Alternatives Analysis

#3 – Draft Plan

#4 – Final Plan

THANK YOU!



Austin-Bergstrom
International Airport



STAY IN TOUCH

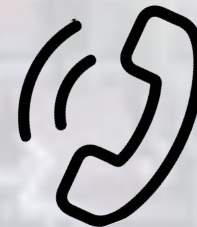
www.ABIAMasterPlan.com

SIGN UP
to Receive News & Updates

or

www.austintexas.gov/department/airport

512.672.8721



THANK YOU!

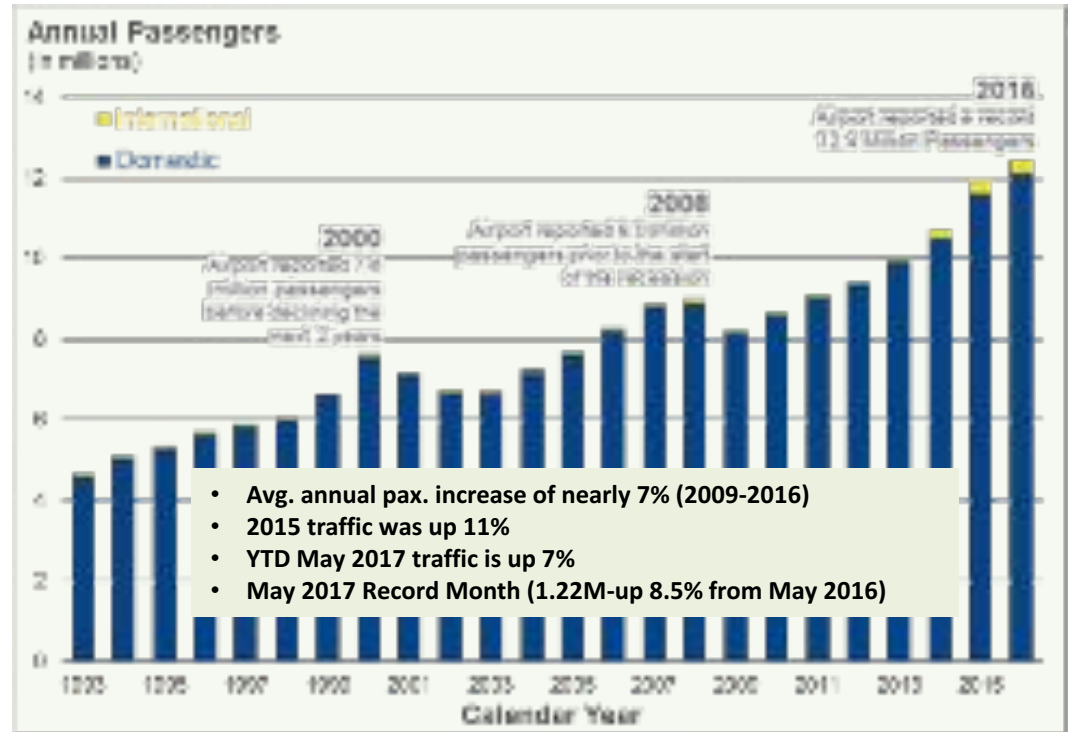


Austin-Bergstrom
International Airport

Envisioning Austin's
Airport of the Future

Why is the ABIA 2040 Master Plan Needed Now?

- Since 1993 passenger growth has tripled with avg. annual growth rate of 4.4%
- Current 2003 Master Plan projects completed ahead of schedule due to rapid growth
- Anticipated doubling passenger growth from 12.4 MAP to 20+ MAP over next 20 years
- 13.3 MAP in July 2017



Austin-Bergstrom
International Airport

2040 Master Plan