

AUSTIN-BERGSTROM INTERNATIONAL AIRPORT

2040 MASTER PLAN



Austin-Bergstrom
International Airport
www.ABIAMasterPlan.com

RUNWAY ALTERNATIVES

Options For A New Runway At ABIA

Runway development is a significant investment in the growth of ABIA. It takes at least seven years to build a runway, including design and construction. Aviation planners considered more than a dozen alternatives to support future demand while considering impacts to the surrounding area. No new runway is required until around 2047 to accommodate the future demand.

GOAL: PLAN FOR ADDITIONAL CAPACITY
FOR FLIGHTS AND AIRLINE SERVICE



Land Acquisition



Potential Terminal Development



MAP



Roadway Impact



Land Development Impacts



Peak Hour Balance



Runway Separation



Constructibility



Environmental Impact



Cost

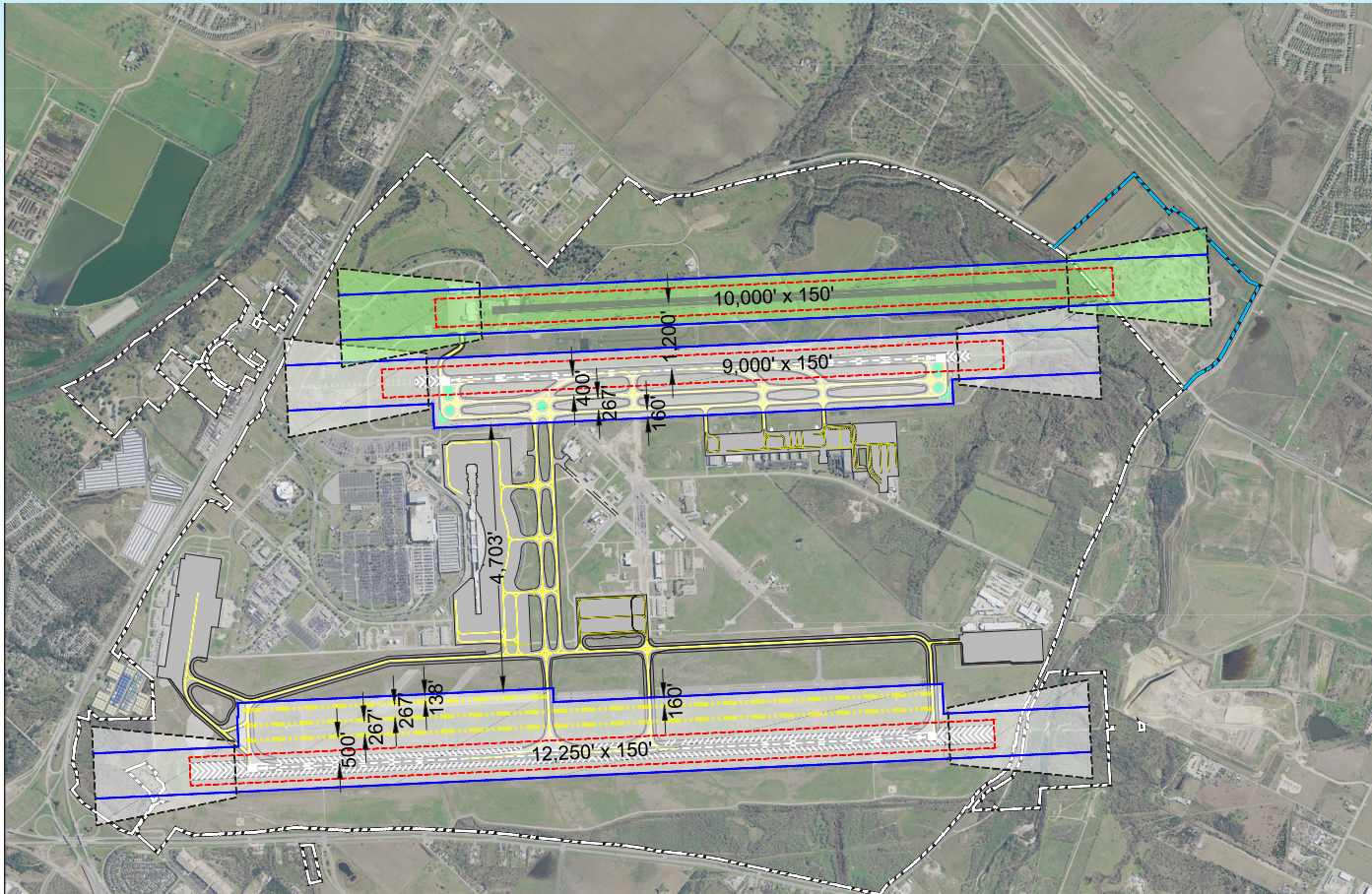


Runway Length



Annual Total Movements

Runway Alternative 1: Closely-Spaced East Runway



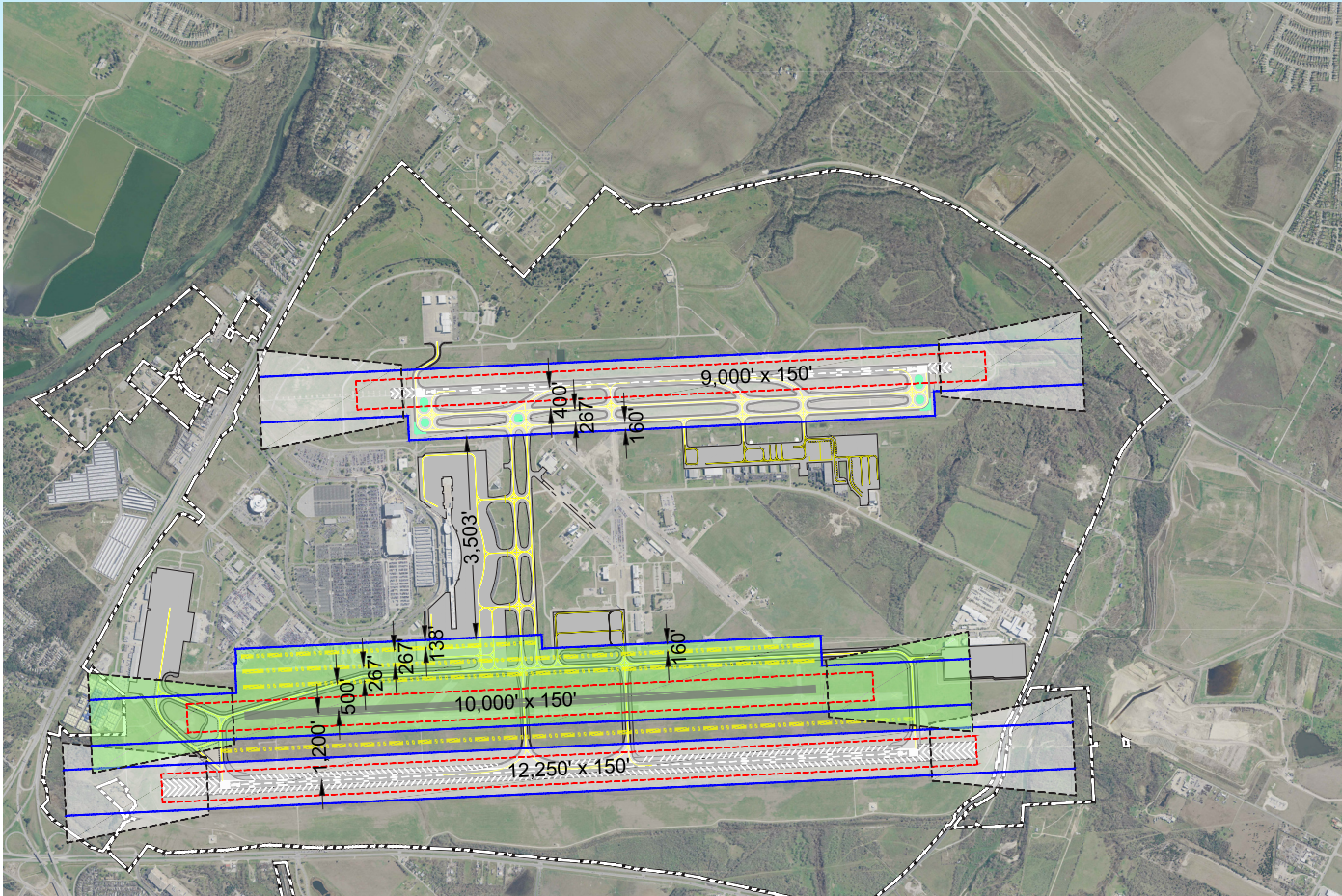
Pros:

- Alternative 1 provides additional runway capacity (same as Alt.2)

Cons:

- Close-in east runway requires land acquisition (minimum 155 acres)
- Requires environmental mitigation of land-fill area
- Impact future Central Warehouse & Cross Dock facility
- Impact to Onion Creek

Preferred Runway Alternative 2: Closely-Spaced West Runway



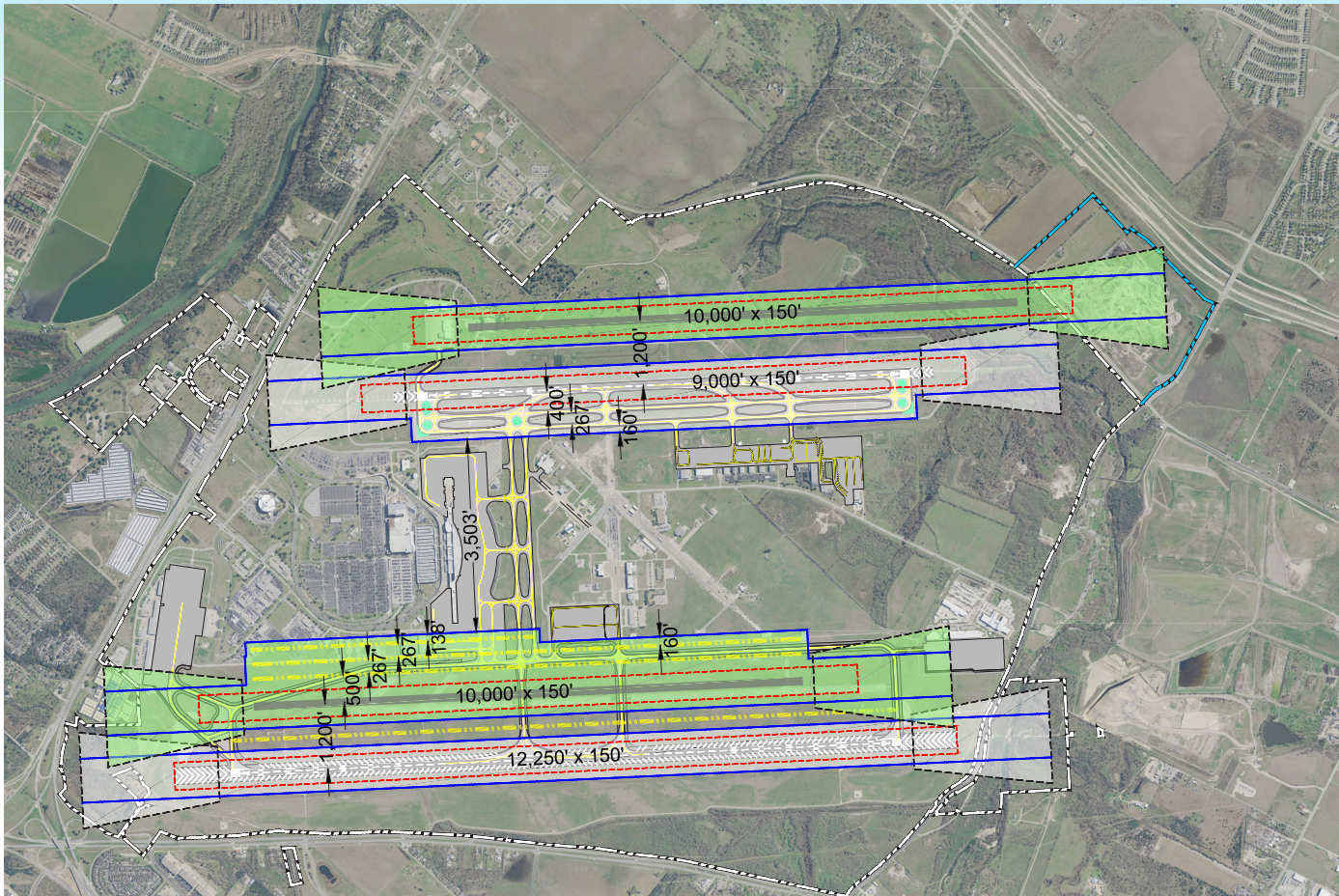
Pros:

- Previously approved in the 1999 and current 2003 master plan
- Alternative 2 provides additional runway capacity with the least amount of community and environmental impacts

Cons:

- Relocate west support facilities and cargo complex
- Limits expansion opportunities of the existing terminal and concourse gates

Runway Alternative 4: Closely-Spaced East & West Runways



Pros:

- Alternative 4 provides additional runway capacity
- No need to relocate west support facilities and cargo complex

Cons:

- Limits expansion opportunities of the existing terminal and concourse gates
- Close-in east runway requires land acquisition (minimum 155 acres)
- Requires environmental mitigation of land-fill area
- Impact future Central Warehouse & Cross Dock facility
- Impact to Onion Creek