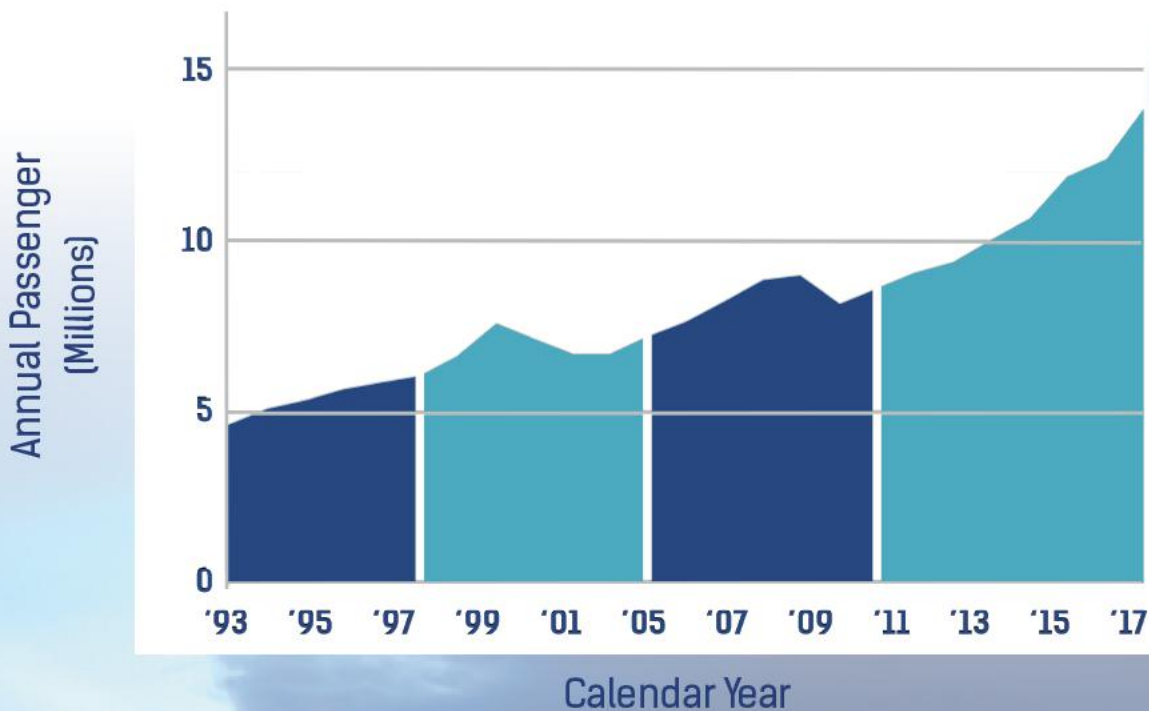




Why is the ABIA 2040 Master Plan Needed Now?

Since 1993, passenger growth has tripled at Austin's airport. Passenger growth is expected to double over the next 20 years, from 13.9 million passengers to more than 31+million annually.

Annual Passenger Growth 1993-2017



SINCE
1993
PASSENGER
GROWTH
TRIPLED!





About the Airport

**2017 AIRPORT
OF THE YEAR**
AIR LINE PILOTS
ASSOCIATION

34th

**Busiest Airport
in U.S.**

1999

ABIA Opens

**13.9
MILLION**

Passengers in 2017
(Record Number, 11.5% Increase from
Previous Record)

ABIA was originally a U.S. Army Air Force base named after John August Earl Bergstrom, the first native Austinite to be killed in action during World War II.

1920s

Austin's first airport, Robert Mueller Municipal opened.

1943

Del Valle Airfield officially renamed to Bergstrom Army Airfield.

1948

Renamed to Bergstrom Air Force base after Air Force became its own military branch.

1995

Base was decommissioned, with all military aviation ceasing.

1999

Robert Mueller Municipal Airport ceased operations. ABIA opens.

ABIA supports more than 34,287 jobs, with 3,000 at the airport itself and contributes roughly 5.1 billion to the local economy.

Home to
17
Airlines

Flights to
65
Domestic
Destinations

Flights to
10
International
Destinations

Austin's airport revenue was \$149 million in 2017, roughly \$13.6 million more than the previous year. Austin's airport is self-supporting, generating revenue to cover its operational expenses and future improvements.



How Was Public Input Incorporated into the 2040 Master Plan?

Four public meetings have been held over the past 18 months to inform and engage the public.



Walkability

Our recommended layout for the terminal has a Personal Rapid Transit option and maintains walkability from curbside to your gate.



The Austin Experience

We made sure to keep Austin's unique culture in mind when developing the plan. You will still be able to visit your local restaurants and experience art and listen to live music.



ABIA's Future

Austin and ABIA are growing at an unprecedented rate. Our recommendations are not just short-term fixes, and are based on forecasts that look decades into the future.



Technical Advisory Committee and Project Advisory Committee

The TAC and the PAC were formed to provide the City with visioning and ideas for the expansion of the ABIA facilities and services. The TAC included members from the FAA, airlines, airport tenants and transportation agencies. The PAC included members from Airport serving businesses, chambers of commerce, Del Valle School District and the Austin Neighborhood Council (including Southeast Austin). Both groups met four times during the planning process.



Public Meetings and Surveys

The Department of Aviation and its consultants held four widely publicized meetings on the ABIA Master Plan. Participants were informed about forecasts and needed airport facilities and were asked to provide comments and feedback. The public was concerned about potential community impacts, which was addressed in the master plan process. An online survey was also made available in English and Spanish to gather feedback on the alternatives.



Current Construction

Parking Garage and Administrative Building

A new garage and airport administrative building located near the Barbara Jordan Terminal will add 5,827 new parking spaces. The garage and the administrative building will be open in 2019.



Gate Expansion at Barbara Jordan Terminal

The ABIA 9-gate expansion project will add nearly 90,000 square-feet of new terminal gate areas plus a wider concourse. The expansion is set open in Spring 2019 and will increase the number of gates from 24 to 34.





Master Plan by the Numbers

The master plan describes a vision for how Austin's airport will expand to manage current and anticipated growth over the next 20 years.

32

New
Domestic
Service Gates

11,100

New
Parking
Spaces

3

New
International
Service Gates

Austin's airport is self-supporting,
generating revenue to cover its operational expenses and future improvements. Possible funds for the projects in the master plan could come from outside sources including the FAA and state or federal grants.

31.4
MILLION

Estimated Annual
Passengers by
the Year 2040

2
MILLION

Square Feet of New
Terminal and Concourse
Space



Innovation and Technology

New technologies are being considered as part of the ABIA 2040 Master Plan.



Security Upgrades



Baggage Handling



Concessions



Passenger Processing (check-in)



Personal Rapid Transit

Personal Rapid Transit

Also referred to as podcars - PRT is a mode of transportation using small automated vehicles. They are currently being used in large airports, including London's Heathrow Airport, and are very popular among users. Connectivity can be between:

- Security and small groups of gates
- Parking facilities and ticketing/baggage claim
- Multitmodal facilities (for bicycles, etc.) and the terminal



What Ideas are Included in the ABIA 2040 Master Plan?

The master plan proposes a series of projects and improvements that align with the vision for ABIA to be the airport of choice for Central Texas. The ABIA 2040 Master Plan will guide our expansion efforts and improvements to increase our capacity to meet the demand, while providing an Austin-style customer experience.



Mobility

ABIA will improve mobility around campus with improvements to SH 71 and on campus. The master plan incorporates a personal rapid-transit system for ease of travel and connectivity. The curbside will be updated to double its capacity and ensure a safer experience for pedestrians and a speedier drop off for passengers. Drivers will also have more than 11,000 additional parking spots to choose from. Multimodal access will be improved by adding sidewalks and bike lanes.

Facility Upgrades and Expansion

The terminal will be upgraded to have a modern layout while maintaining Austin's unique feel. The terminal design concept includes an outdoor plaza area for relaxing and dining, a larger ticketing area, and a skybridge with picturesque views of the city. The conceptual layout incorporates intuitive wayfinding and is meant to be flexible to allow for future development without major disruptions to airline service. A new cargo facility and support facilities for freight and maintenance are also a part of the plan.



Innovative Solutions

ABIA is a busy airport – and we predict it will become even more active in the near future. Innovative solutions improve the timeliness at which our customers travel include an increased number of security lanes, advanced baggage claim systems and personal rapid transit systems.

Customer Experience

ABIA values its customers and strives to be the airport of choice for Central Texas. The airport will continue to offer experiences unique to ABIA, including live music and local concessions. The outdoor plaza and skybridge, for example, are experiences customers can look forward to each time they travel through ABIA, along with new public art spaces and installations.

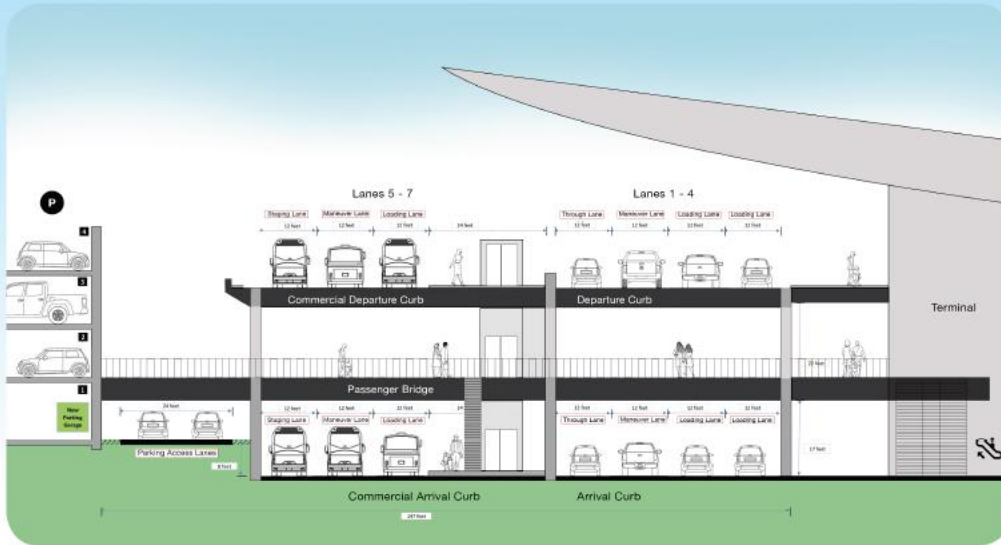


Environment and Sustainability

ABIA has held a longstanding commitment to sustainability. Sustainability initiatives that are included in the master plan are aligned with current ABIA efforts, City of Austin and ABIA goals as well as global best practices. The design concepts outlined in the master plan placed thoughtful attention to existing and future land use, air quality, the existence of hazardous materials and community, ecological and cultural resources.



How Will Mobility Improve at ABIA?

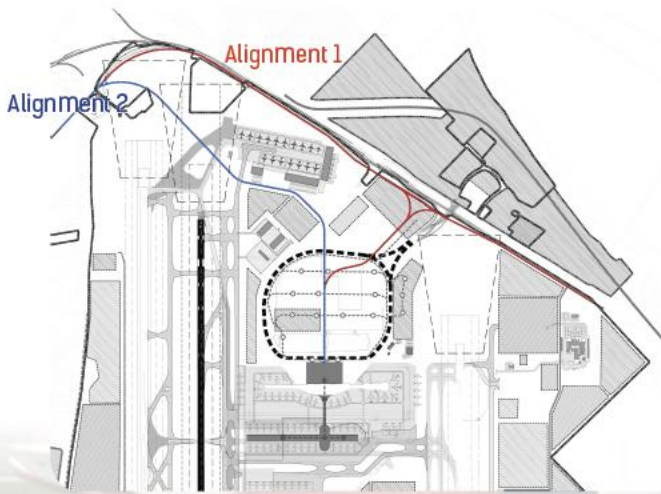


Speeding Up Curbside Service and Increasing Safety for Pedestrians

The proposed layout decreases congestion for vehicles and increases safety by separating the pedestrian traffic from the vehicular traffic by incorporating a pedestrian bridge.

Congestion-Relieving Improvements to Hwy 71 at Presidential Blvd.

In the near-term, a new braided lane intersection design will provide free-flow traffic into and out of the airport to/from SH 71, eliminating stopped traffic due to the current traffic signals and stop signs. This is done by elevating incoming traffic above the exiting traffic with a bridge. In the long-term, SH 71 would be relocated to the north and allow for future airport expansion, including the potential to extend the Runway 17L end to the north for added capacity.



Preserving a Corridor for Mass Transit

The master plan includes two possible alignment options for high capacity transit serving ABIA from Riverside Drive. These alignments are being studied through Capital Metro's Project Connect process. Further study is needed to determine the recommended alignment.

Alignment 1, shown in red
 Alignment 2, shown in blue



What are the Proposed Plans for Future Terminal Expansion?



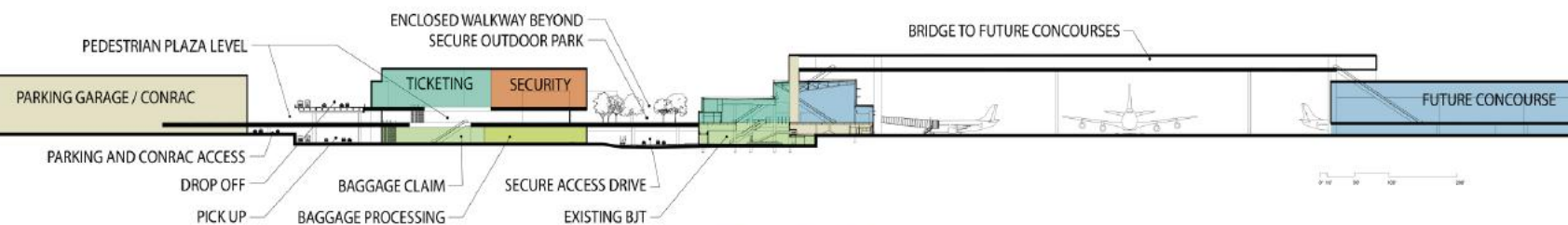
Future Terminal Design Concept

The concept included in the master plan will feature elements which will naturally guide passengers through ticketing, security and into the Barbara Jordan Terminal. The conceptual design of the new terminal will allow future development of Personal Rapid Transit, expediting the journey from security to the Barbara Jordan Terminal and beyond to the new concourse.

The design concept increases passenger processing by dedicating more space to ticketing, security and baggage claim. The terminal design incorporates the use of outdoor green space for an enhanced customer experience.



Future Open-air Plaza Concept



Terminal Section Diagram



What are the Proposed Plans for Future Terminal Expansion?



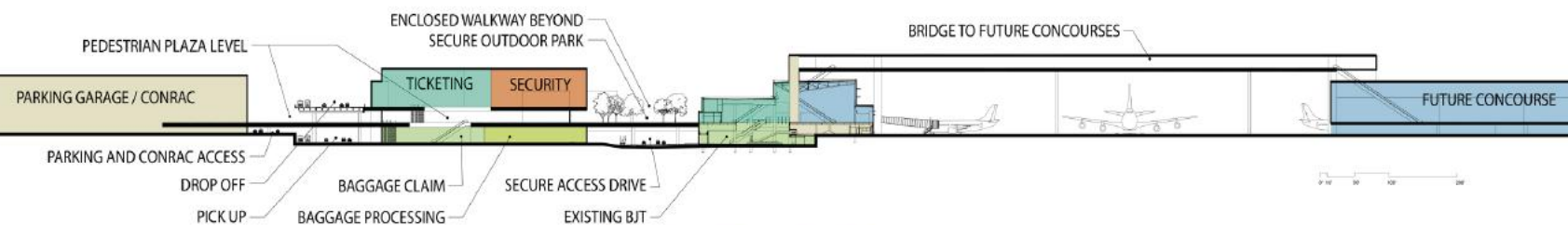
Future Terminal Design Concept

The concept included in the master plan will feature elements which will naturally guide passengers through ticketing, security and into the Barbara Jordan Terminal. The conceptual design of the new terminal will allow future development of Personal Rapid Transit, expediting the journey from security to the Barbara Jordan Terminal and beyond to the new concourse.

The design concept increases passenger processing by dedicating more space to ticketing, security and baggage claim. The terminal design incorporates the use of outdoor green space for an enhanced customer experience.



Future Open-air Plaza Concept



Terminal Section Diagram



When Will the Improvements Be Made?

The ABIA Master Plan will be implemented in 5-year phases over the next 20 years. These phases align with capital improvement projects that the airport has planned.

What's Included:

Phase 1
2019–2022
17.9 MAP

A new terminal and 20-gate remote concourse will be designed and constructed. The new terminal includes passenger processing facilities, such as; ticketing, security areas and baggage claim. The remote concourse includes new gate areas, concessions, airline lounges and other passenger amenities. A new braided interchange with Presidential Boulevard and SH71 will be constructed that provides a free-flow of traffic into and out of the airport. Expansion and upgrades of various support facilities will help to maintain the airport infrastructure to the highest level. All of these improvements are meant to support the projected demand of 18 million annual passengers.

What's Included:

Phase 2
2023–2027
21.7 MAP

On the landside, Barbara Jordan Terminal will receive upgrades to the U.S. Customs facilities area, gate areas, concessions, loading bridges, and other passenger amenities. Expansion of the Remain Overnight (RON) aircraft parking ramp, the aircraft gate apron, and mid-field taxiway will add airfield capacity. All of these improvements are meant to support the projected demand of 21.7 million annual passengers by 2027, while maintaining the current Austin airport experience.

What's Included:

Phase 3
2028–2032
26.2 MAP

The remote concourse will be expanded to the west, adding 12 gates. Additional roadway network improvements and a Personal Rapid Transit (PRT) system are forecasted to significantly improve mobility. Phase 3 improvements are intended to support the projected demand of 26.2 million annual passengers in 2032.

What's Included:

Phase 4
2033–2037
31.4 MAP

Further renovations to the Barbara Jordan Terminal, upgrades to the existing runways, new apron taxiways and taxilanes and expanded support facilities are included in this phase. A new ground transportation center will improve mobility. In addition, a new west cargo complex will be developed that will increase ABIA's cargo capacity to 341.5 million annual pounds. Phase 4 improvements are intended to support the projected demand of 31.4 million annual passengers.

What's Included:

Ultimate
2037 and
Beyond

Although the need for a new runway is forecasted to fall outside of the 2040 Master Plan, the space for a 10,000-foot new runway has been preserved. The concept of relocating SH71 to the north is also included as a concept in the Ultimate program plan. The master plan includes two possible alignment options for high capacity transit serving ABIA from Riverside Drive. These alignments are being studied through Capital Metro's Project Connect process. Further study is needed to determine the recommended alignment.