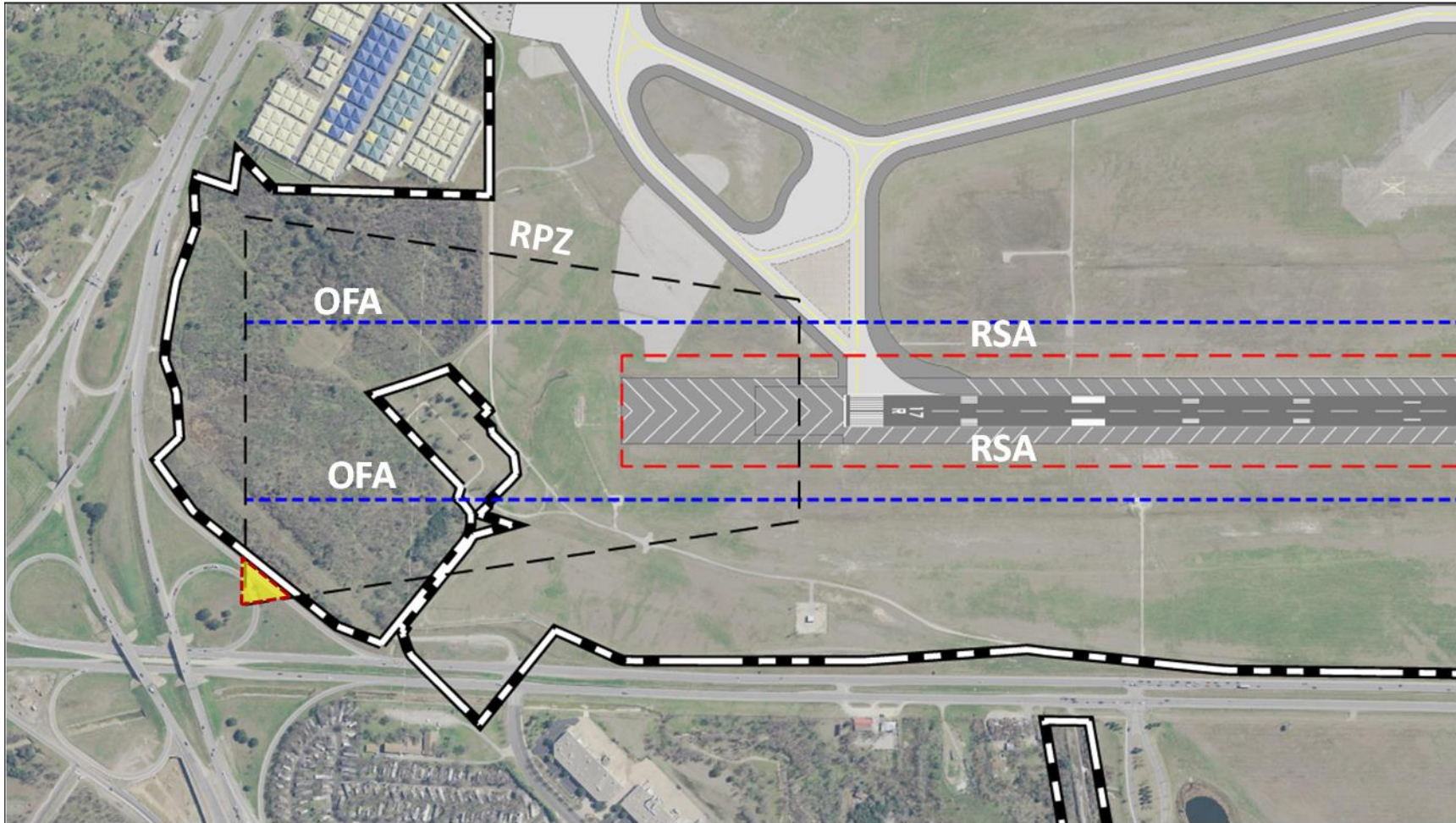




**Appendix 6.5: SRM Panel
Hazard Review
Revised Reference Drawings**

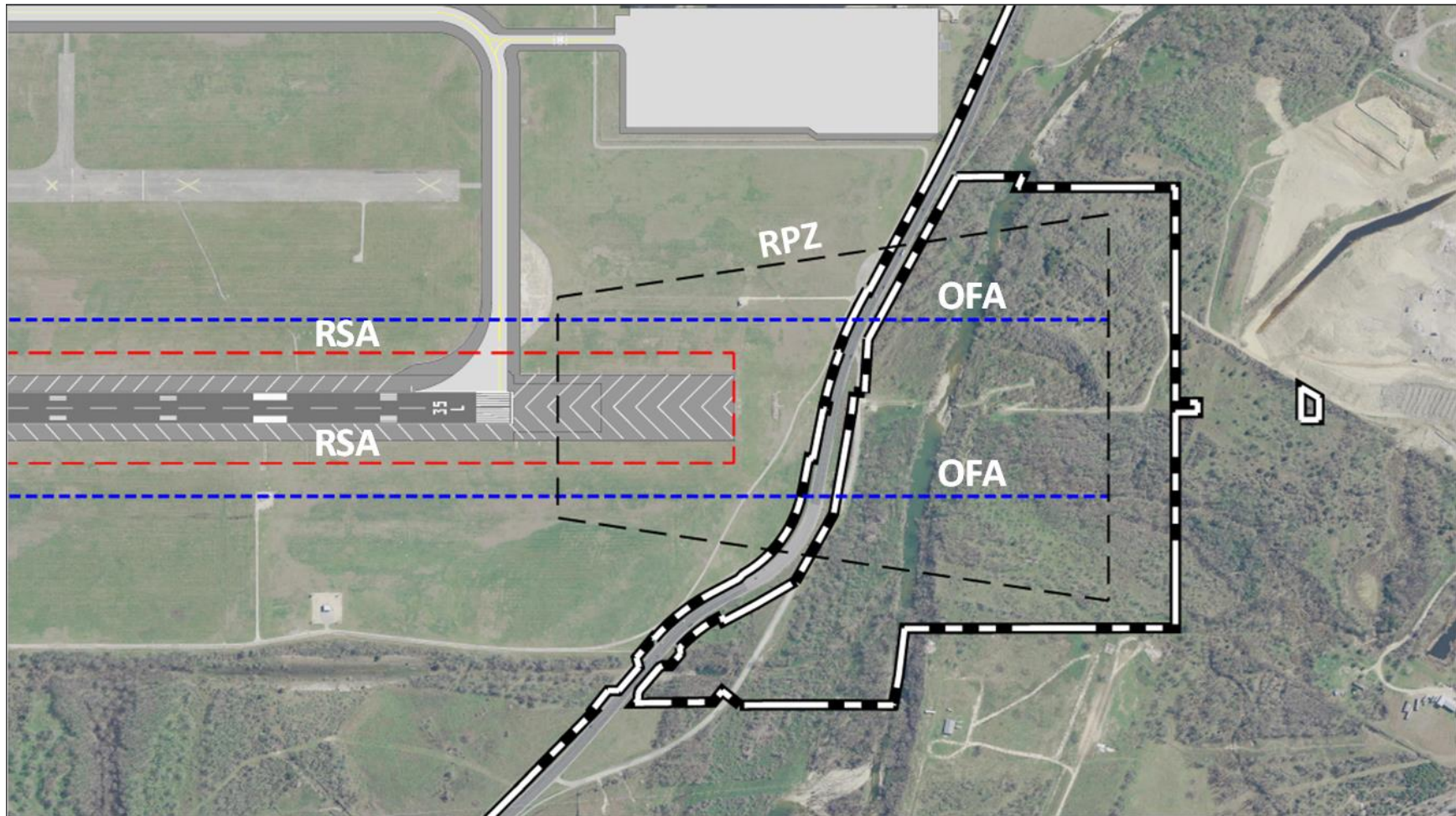


Exhibit A6.5-1: 17R RPZ, RSA, and OFA



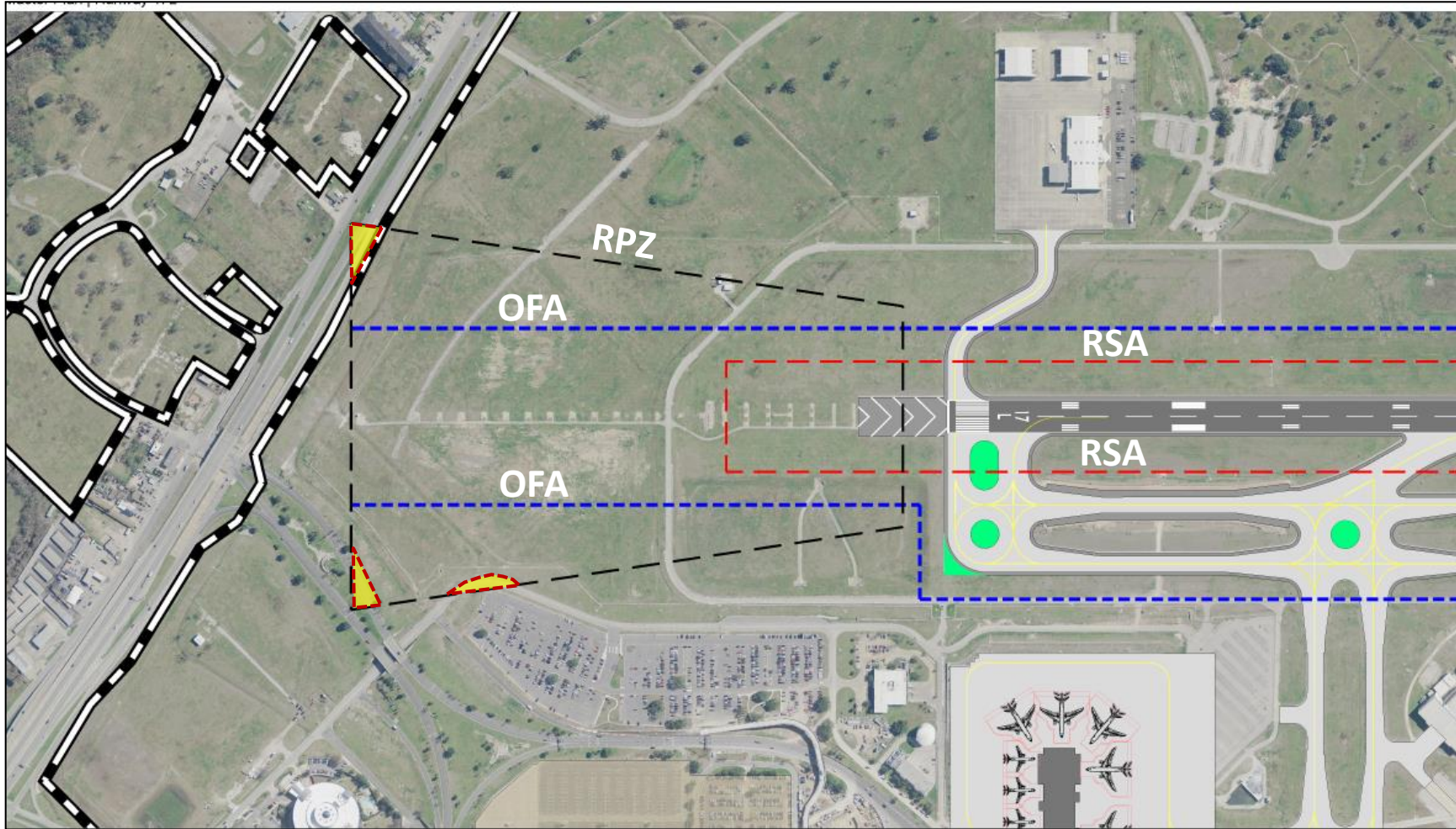
Source: Landrum & Brown analysis

Exhibit A6.5-2: 35L RPZ, RSA, and OFA



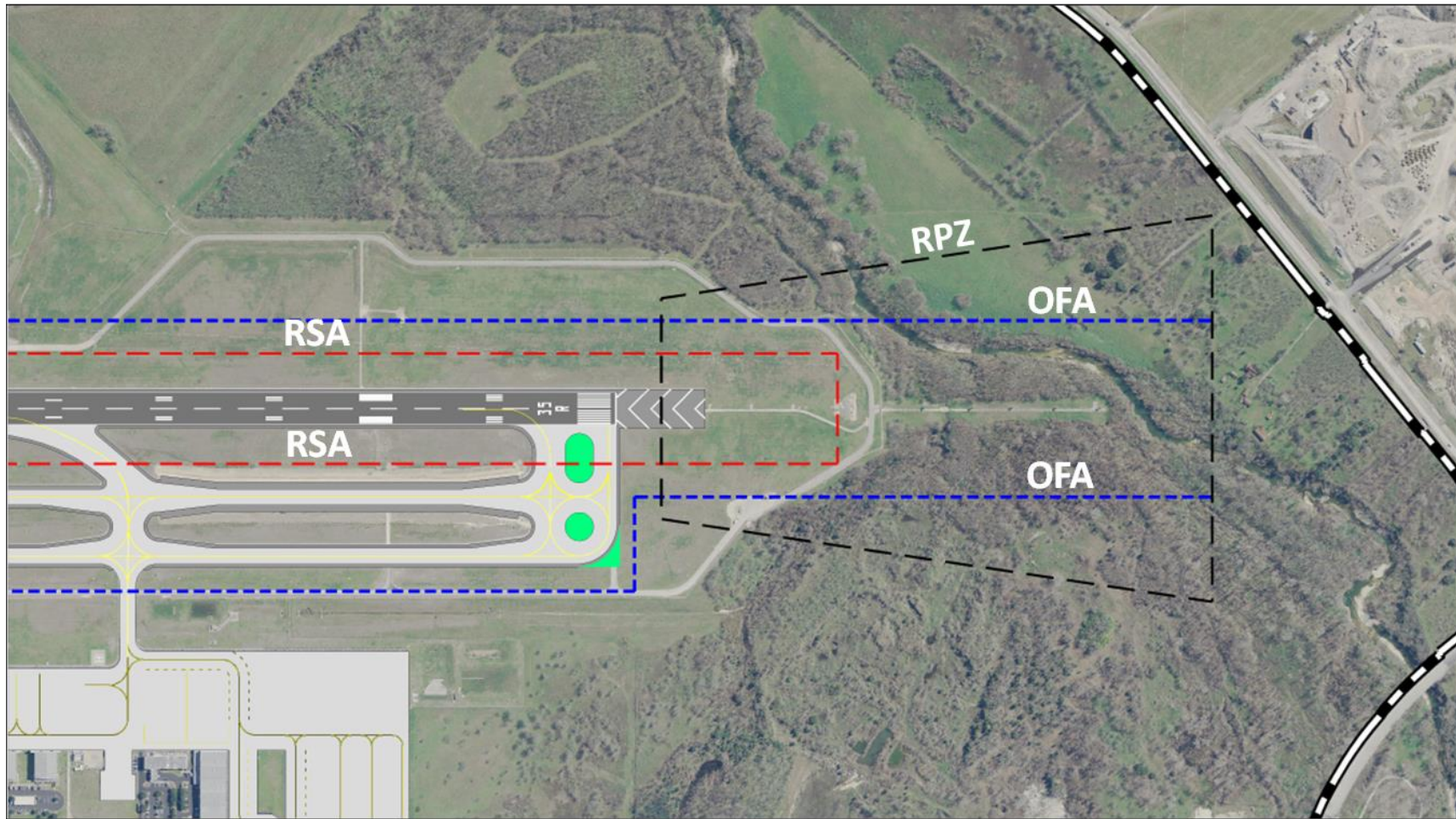
Source: Landrum & Brown analysis

Exhibit A6.5-3: 17L RPZ, RSA, and OFA



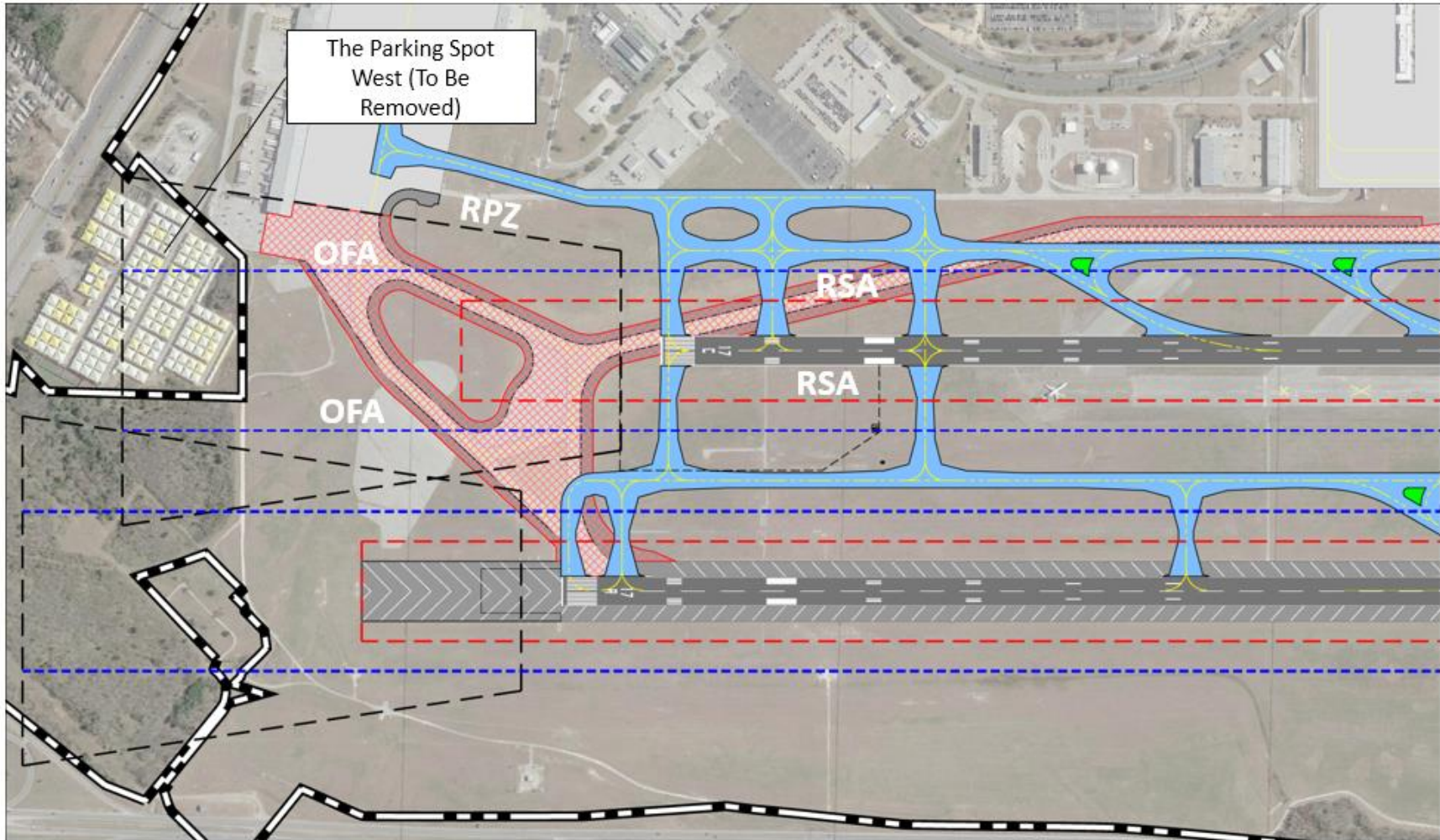
Source: Landrum & Brown analysis

Exhibit A6.5-4: 35R RPZ, RSA, and OFA



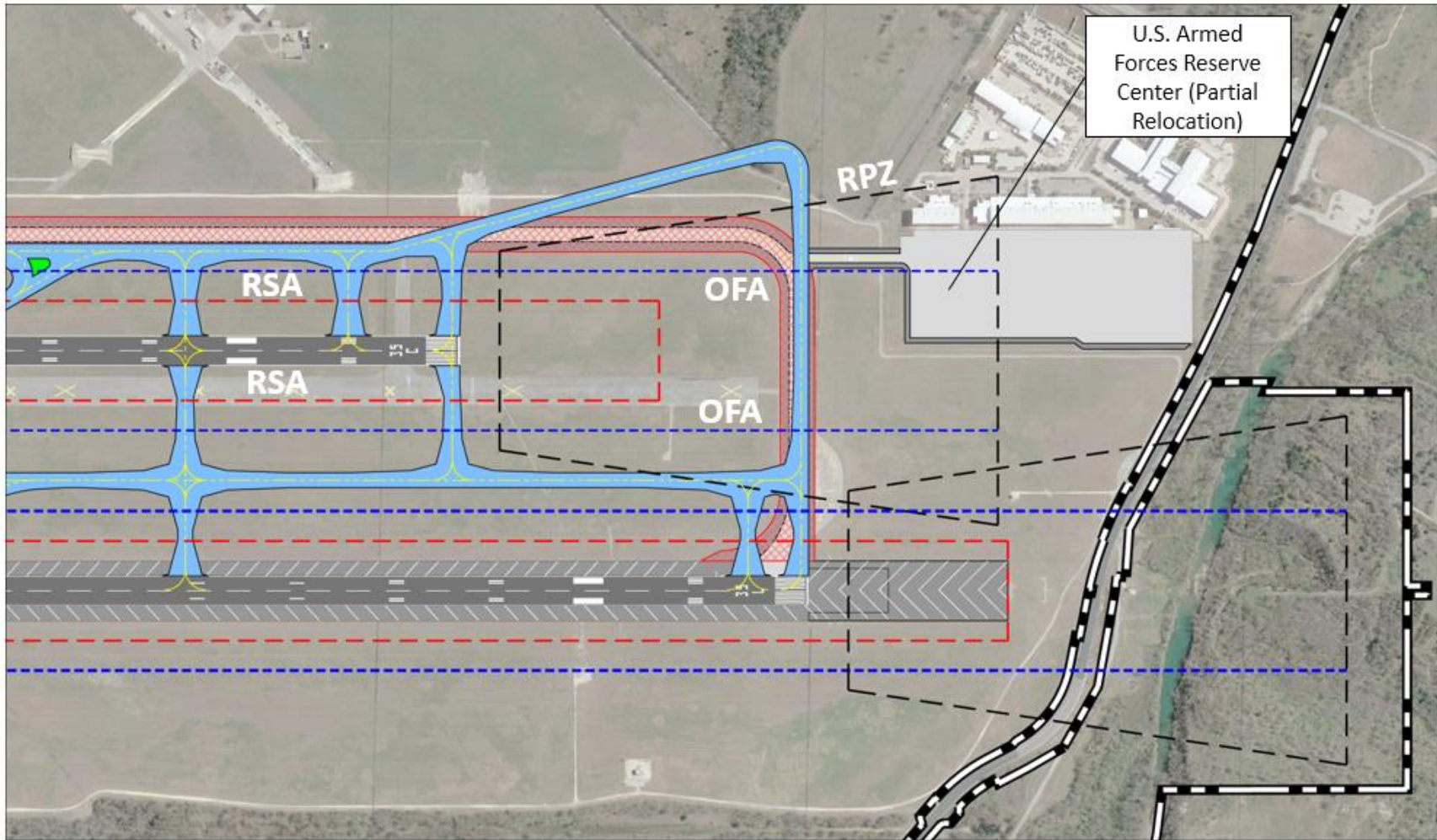
Source: Landrum & Brown analysis

Exhibit A6.5-5: 17C RPZ, RSA, and OFA



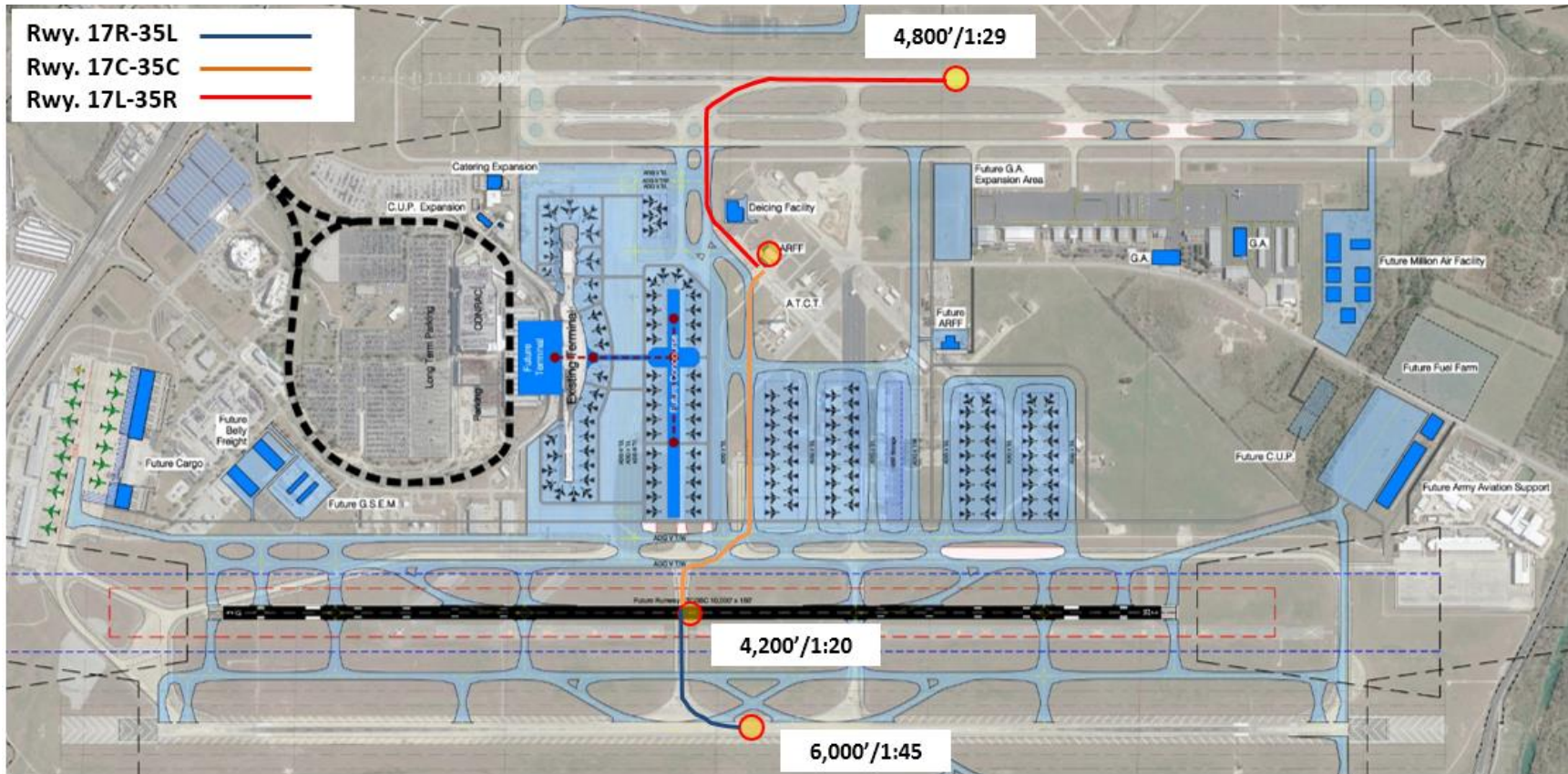
Source: Landrum & Brown analysis

Exhibit A6.5-6: 35C RPZ, RSA, and OFA



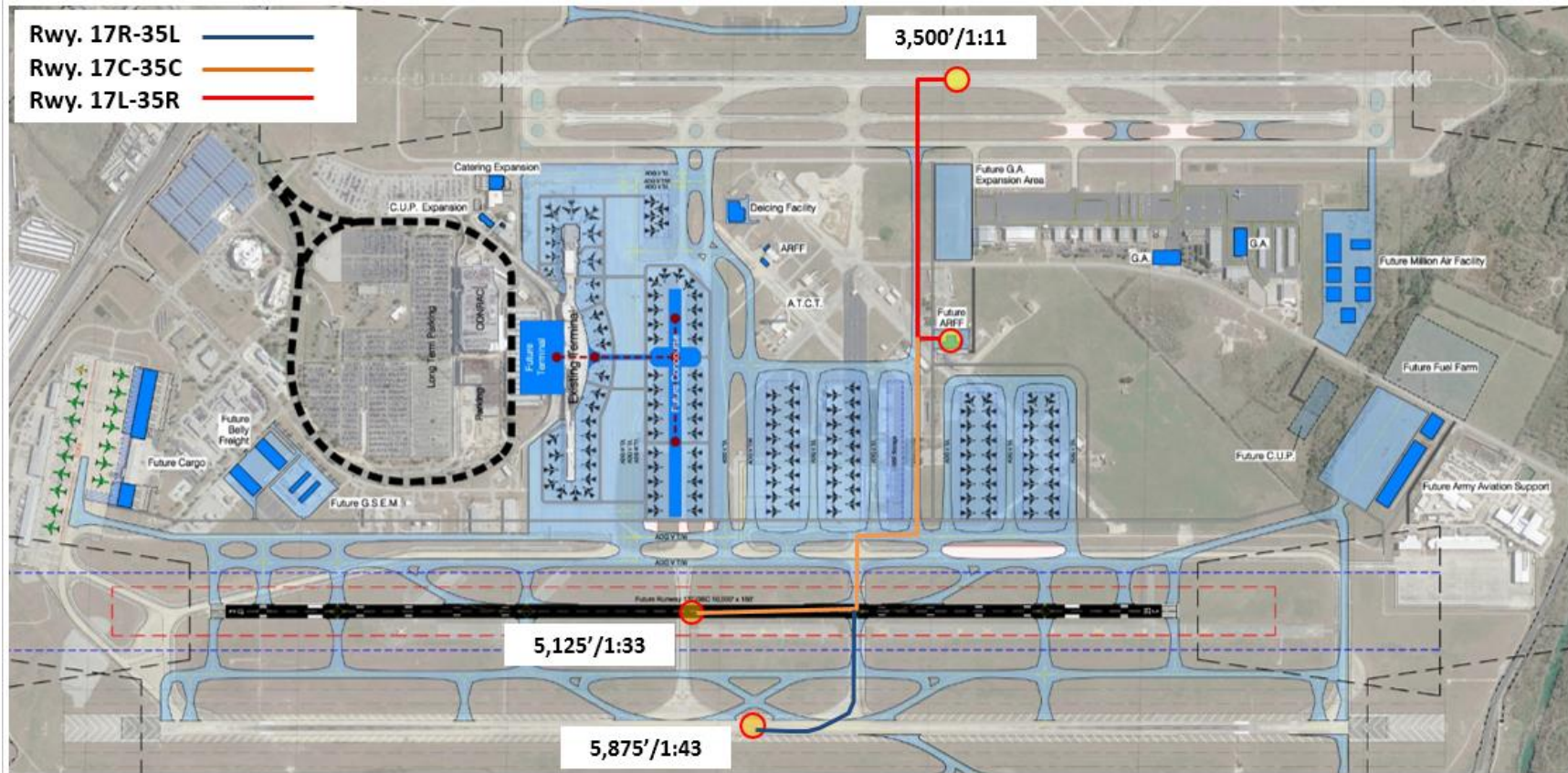
Note: This drawing will be updated with the hangar located on the south side of the ramp prior to the final version
Source: Landrum & Brown analysis

Exhibit A6.5-7: Existing ARFF Response Routes and Times



Source: Landrum & Brown analysis

Exhibit A6.5-8: Future ARFF Station Response Routes and Times



Source: Landrum & Brown analysis