

**Austin-Bergstrom International Airport
Aviation Activity Report
Calendar Year 2020 vs 2019**

Combined Terminals

	11/2020	11/2019	Percent Change	1/2020 - 11/2020	1/2019 - 11/2019	Percent Change
ABIA						
Total Passenger Activity						
Domestic Enplaned Revenue	236,876	658,192	-64.01%	2,703,718	7,039,434	-61.59%
Domestic Deplaned Revenue	235,301	641,949	-63.35%	2,718,793	7,035,415	-61.36%
International Enplaned Revenue	507	17,514	-97.11%	32,801	199,919	-83.59%
International Deplaned Revenue	453	16,730	-97.29%	35,724	207,067	-82.75%
Domestic Enplaned Non-Revenue	7,178	12,668	-43.34%	90,186	154,032	-41.45%
Domestic Deplaned Non-Revenue	7,052	12,333	-42.82%	85,463	147,482	-42.05%
International Enplaned Non-Revenue	4	166	-97.59%	499	1,551	-67.83%
International Deplaned Non-Revenue	6	165	-96.36%	434	1,652	-73.73%
Intl Enplaned Pre-Cleared Revenue	0	2,908	-100.00%	5,483	39,537	-86.13%
Intl Deplaned Pre-Cleared Revenue	0	2,463	-100.00%	4,626	38,939	-88.12%
Intl Enplaned Pre-Cleared Non-Revenue	0	36	-100.00%	108	486	-77.78%
Intl Deplaned Pre-Cleared Non-Revenue	0	36	-100.00%	100	500	-80.00%
South Terminal Domestic Enplaned Revenue	11,043	44,136	-74.98%	136,702	500,444	-72.68%
South Terminal Domestic Deplaned Revenue	10,894	43,874	-75.17%	140,579	502,607	-72.03%
South Terminal Domestic Enplaned Non-Revenue	37	126	-70.63%	690	1,625	-57.54%
South Terminal Domestic Deplaned Non-Revenue	49	121	-59.50%	711	1,986	-64.20%
ABIA Passenger Totals	509,400	1,453,417	-64.95	5,956,617	15,872,676	-62.47
<i>ABIA Enplaned Passenger Totals</i>	<i>255,645</i>	<i>735,746</i>	<i>-65.25</i>	<i>2,970,187</i>	<i>7,937,028</i>	<i>-62.58</i>
<i>ABIA Deplaned Passenger Totals</i>	<i>253,755</i>	<i>717,671</i>	<i>-64.64</i>	<i>2,986,430</i>	<i>7,935,648</i>	<i>-62.37</i>
<i>ABIA Domestic Passenger Totals</i>	<i>508,430</i>	<i>1,413,399</i>	<i>-64.03</i>	<i>5,876,842</i>	<i>15,383,025</i>	<i>-61.80</i>
<i>ABIA International Passenger Totals</i>	<i>970</i>	<i>40,018</i>	<i>-97.58</i>	<i>79,775</i>	<i>489,651</i>	<i>-83.71</i>

CURRENT PASSENGER RECORD = 1,643,016 RECORD SET = JULY 2019

Total Aircraft Operations

Air Carrier	6,107	11,726	-47.92%	72,965	130,214	-43.97%
Commuter & Air Taxi	1,271	1,491	-14.76%	12,230	14,718	-16.90%
Military	440	405	8.64%	4,668	7,621	-38.75%
General Aviation						
Itinerant	2,895	3,986	-27.37%	30,435	39,373	-22.70%
Local	0	256	-100.00%	268	842	-68.17%
Total G.A.	2,895	4,242	-31.75	30,703	40,215	-23.65
Total Operations	10,713	17,864	-40.03	120,566	192,768	-37.46

**Austin-Bergstrom International Airport
Aviation Activity Report
Calendar Year 2020 vs 2019**

By Terminal

	11/2020	11/2019	Percent Change	1/2020 - 11/2020	1/2019 - 11/2019	Percent Change
<u>Barbara Jordan Terminal (BJT)</u>						
Passenger Activity						
Domestic Enplaned Revenue	236,876	658,192	-64.01%	2,703,718	7,039,434	-61.59%
Domestic Deplaned Revenue	235,301	641,949	-97.11%	2,718,793	7,035,415	-83.59%
International Enplaned Revenue	507	17,514	-97.29%	32,801	199,919	-82.75%
International Deplaned Revenue	453	16,730	-97.29%	35,724	207,067	-82.75%
Domestic Enplaned Non-Revenue	7,178	12,668	-43.34%	90,186	154,032	-41.45%
Domestic Deplaned Non-Revenue	7,052	12,333	-42.82%	85,463	147,482	-42.05%
International Enplaned Non-Revenue	4	166	-97.59%	499	1,551	-67.83%
International Deplaned Non-Revenue	6	165	-96.36%	434	1,652	-73.73%
Intl Enplaned Pre-Cleared Revenue	0	2,908	-100.00%	5,483	39,537	-86.13%
Intl Deplaned Pre-Cleared Revenue	0	2,463	-100.00%	4,626	38,939	-88.12%
Intl Enplaned Pre-Cleared Non-Revenue	0	36	-100.00%	108	486	-77.78%
Intl Deplaned Pre-Cleared Non-Revenue	0	36	-100.00%	100	500	-80.00%
Barbara Jordan Terminal Passenger Totals	487,377	1,365,160	-64.30	5,677,935	14,866,014	-61.81
<i>BJT Enplaned Passenger Totals</i>	<i>244,565</i>	<i>691,484</i>	<i>-64.63</i>	<i>2,832,795</i>	<i>7,434,959</i>	<i>-61.90</i>
<i>BJT Deplaned Passenger Totals</i>	<i>242,812</i>	<i>673,676</i>	<i>-63.96</i>	<i>2,845,140</i>	<i>7,431,055</i>	<i>-61.71</i>
<i>BJT Domestic Passenger Totals</i>	<i>486,407</i>	<i>1,325,142</i>	<i>-63.29</i>	<i>5,598,160</i>	<i>14,376,363</i>	<i>-61.06</i>
<i>BJT International Passenger Totals</i>	<i>970</i>	<i>40,018</i>	<i>-97.58</i>	<i>79,775</i>	<i>489,651</i>	<i>-83.71</i>
<u>South Terminal (ST)</u>						
Passenger Activity						
South Terminal Domestic Enplaned Revenue	11,043	44,136	-74.98%	136,702	500,444	-72.68%
South Terminal Domestic Deplaned Revenue	10,894	43,874	-75.17%	140,579	502,607	-72.03%
South Terminal Domestic Enplaned Non-Revenue	37	126	-70.63%	690	1,625	-57.54%
South Terminal Domestic Deplaned Non-Revenue	49	121	-59.50%	711	1,986	-64.20%
South Terminal Passenger Totals	22,023	88,257	-75.05	278,682	1,006,662	-72.32
<i>ST Enplaned Passenger Totals</i>	<i>11,080</i>	<i>44,262</i>	<i>-74.97</i>	<i>137,392</i>	<i>502,069</i>	<i>-72.63</i>
<i>ST Deplaned Passenger Totals</i>	<i>10,943</i>	<i>43,995</i>	<i>-75.13</i>	<i>141,290</i>	<i>504,593</i>	<i>-72.00</i>

**Austin-Bergstrom International Airport
Aviation Activity Report
Calendar Year 2020 vs 2019**

	11/2020	11/2019	Percent Change	1/2020 - 11/2020	1/2019 - 11/2019	Percent Change
Total Cargo Activity						
Mail						
Domestic Enplaned Mail	186,312	240,327	-22.48%	1,964,245	2,106,583	-6.76%
Domestic Deplaned Mail	472,840	718,291	-34.17%	4,918,149	7,410,717	-33.63%
International Enplaned Mail	0	0	0.00%	0	0	0.00%
International Deplaned Mail	0	0	0.00%	0	110,830	-100.00%
South Terminal-Domestic Enplaned Mail	0	0	0.00%	0	0	0.00%
South Terminal-Domestic Deplaned Mail	0	0	0.00%	0	0	0.00%
Mail Totals	659,152	958,618	-31.24	6,882,394	9,628,130	-28.52
Cargo						
Domestic Enplaned Cargo	8,725,367	4,965,636	75.71%	73,484,311	52,909,242	38.89%
Domestic Deplaned Cargo	12,175,773	7,093,286	71.65%	103,223,041	74,680,373	38.22%
International Enplaned Cargo	16,349	2,105,227	-99.22%	1,129,028	5,857,884	-80.73%
International Deplaned Cargo	6,350	132,001	-95.19%	546,754	2,898,756	-81.14%
South Terminal-Domestic Enplaned Cargo	0	0	0.00%	0	0	0.00%
South Terminal-Domestic Deplaned Cargo	0	0	0.00%	0	0	0.00%
Cargo Totals	20,923,839	14,296,150	46.36	178,383,134	136,346,255	30.83
Belly Freight						
Domestic Enplaned Belly Freight	164,430	302,400	-45.63%	2,425,334	3,465,411	-30.01%
Domestic Deplaned Belly Freight	273,639	460,369	-40.56%	3,769,376	5,620,716	-32.94%
International Enplaned Belly Freight	0	455,121	-100.00%	1,035,039	3,851,188	-73.12%
International Deplaned Belly Freight	0	875,314	-100.00%	2,056,175	7,184,237	-71.38%
South Terminal-Domestic Enplaned Belly Frght	0	0	0.00%	0	0	0.00%
South Terminal-Domestic Deplaned Belly Frght	0	0	0.00%	0	0	0.00%
Belly Freight Totals	438,069	2,093,204	-79.07	9,285,924	20,121,552	-53.85
Cargo Totals (Mail, Cargo, Belly Freight)	22,021,060	17,347,972	26.94	194,551,452	166,095,937	17.13
<i>Enplaned Cargo Totals</i>	<i>9,092,458</i>	<i>8,068,711</i>	<i>12.69</i>	<i>80,037,957</i>	<i>68,190,308</i>	<i>17.37</i>
<i>Deplaned Cargo Totals</i>	<i>12,928,602</i>	<i>9,279,261</i>	<i>39.33</i>	<i>114,513,495</i>	<i>97,905,629</i>	<i>16.96</i>
<i>Domestic Cargo Totals</i>	<i>21,998,361</i>	<i>13,780,309</i>	<i>59.64</i>	<i>189,784,456</i>	<i>146,193,042</i>	<i>29.82</i>
<i>International Cargo Totals</i>	<i>22,699</i>	<i>3,567,663</i>	<i>-99.36</i>	<i>4,766,996</i>	<i>19,902,895</i>	<i>-76.05</i>

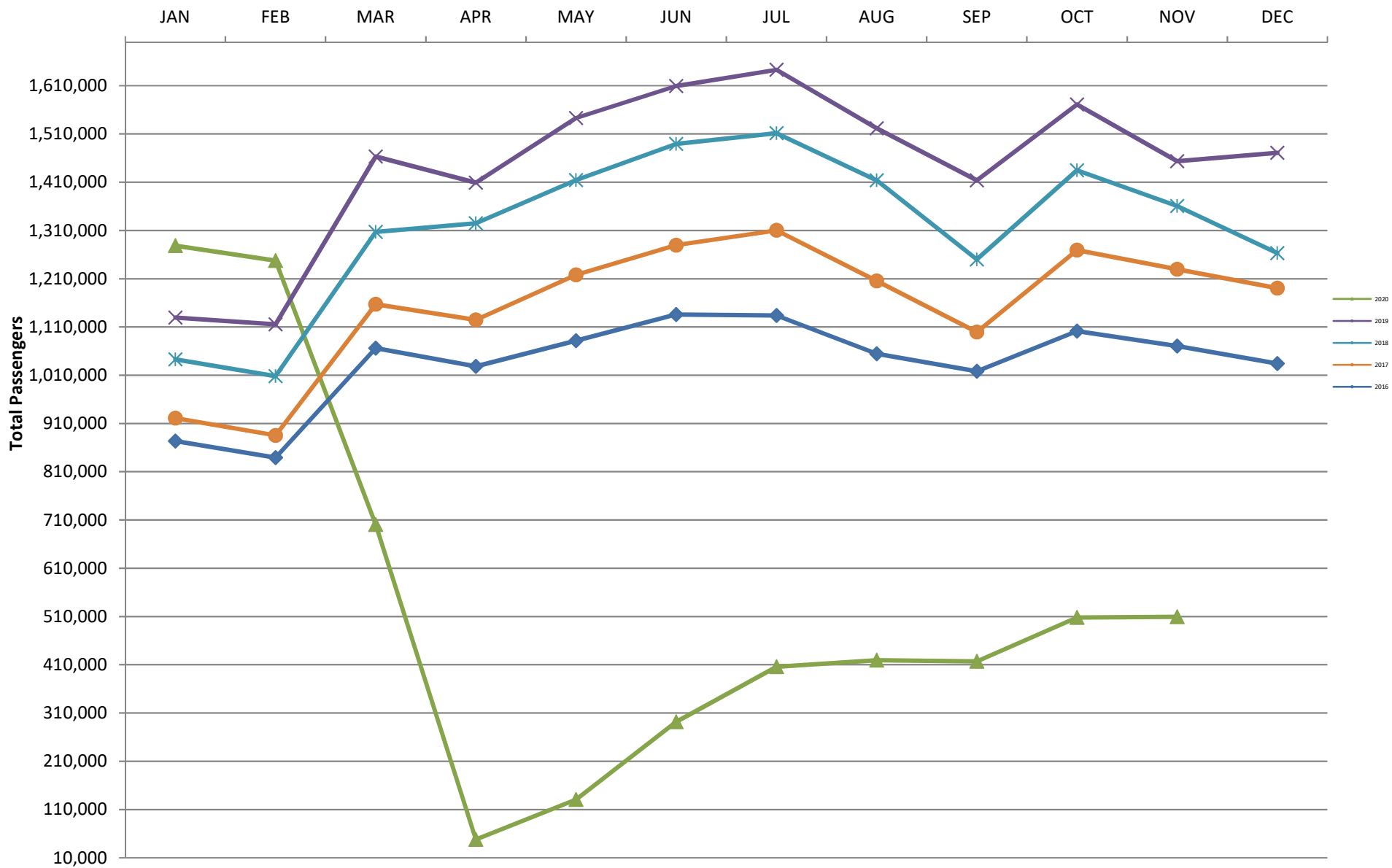
CURRENT CARGO RECORD = 40,215,518

RECORD SET = MARCH 2001

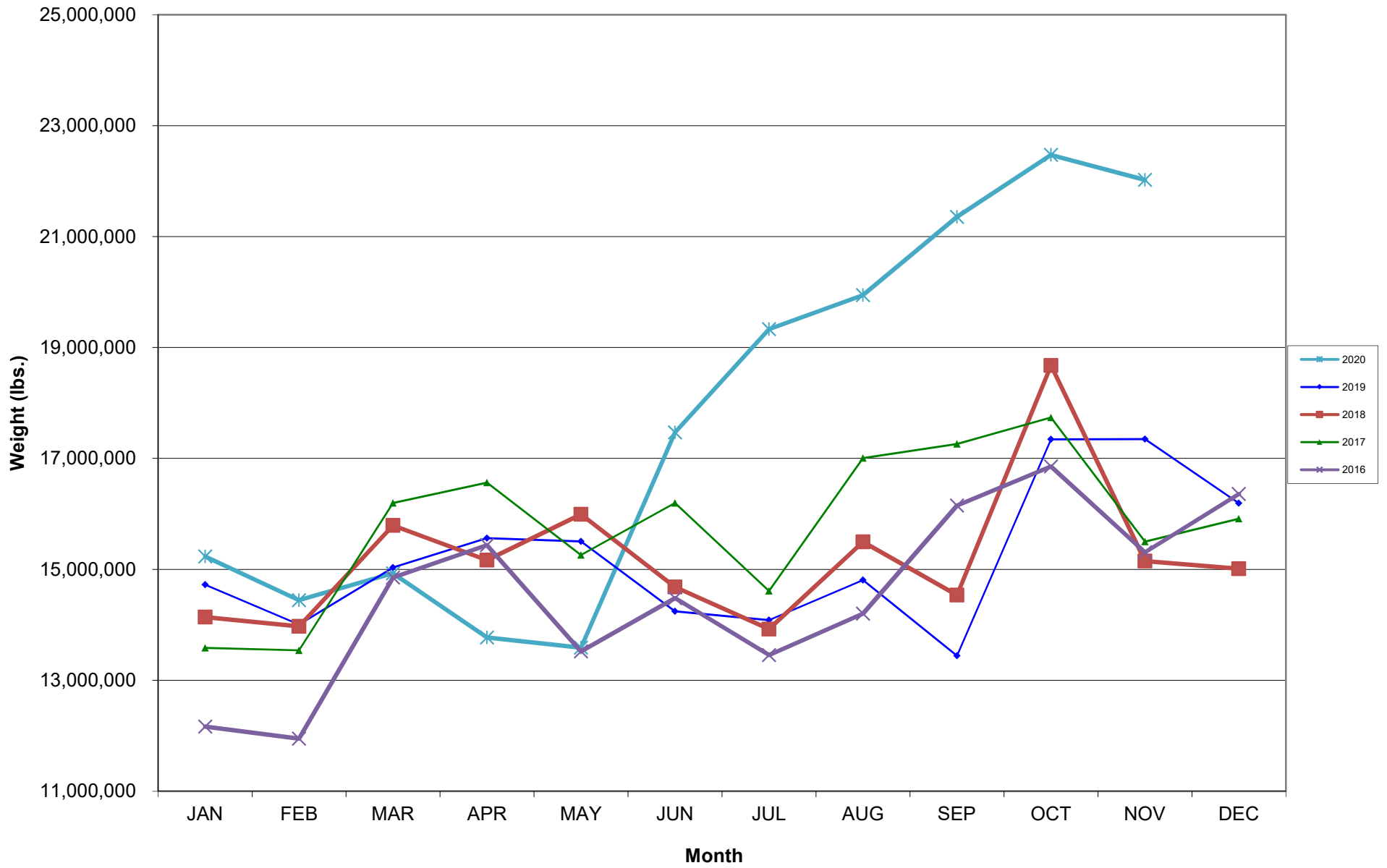
AUS – Airline Codes
November 2020

<u>Code</u>	<u>Carrier</u>
AS	Alaska Airlines, Inc.
G4	Allegiant Air, LLC
AA	American Airlines, Inc.
DL	Delta Air Lines
F9	Frontier Airlines, Inc.
B6	JetBlue Airways Corp.
WN	Southwest Airlines
NK	Spirit Airlines, Inc.
SY	Sun Country Airlines/MN Airlines LLC
WQ	Swift Air, LLC
UA	United Airlines, Inc.

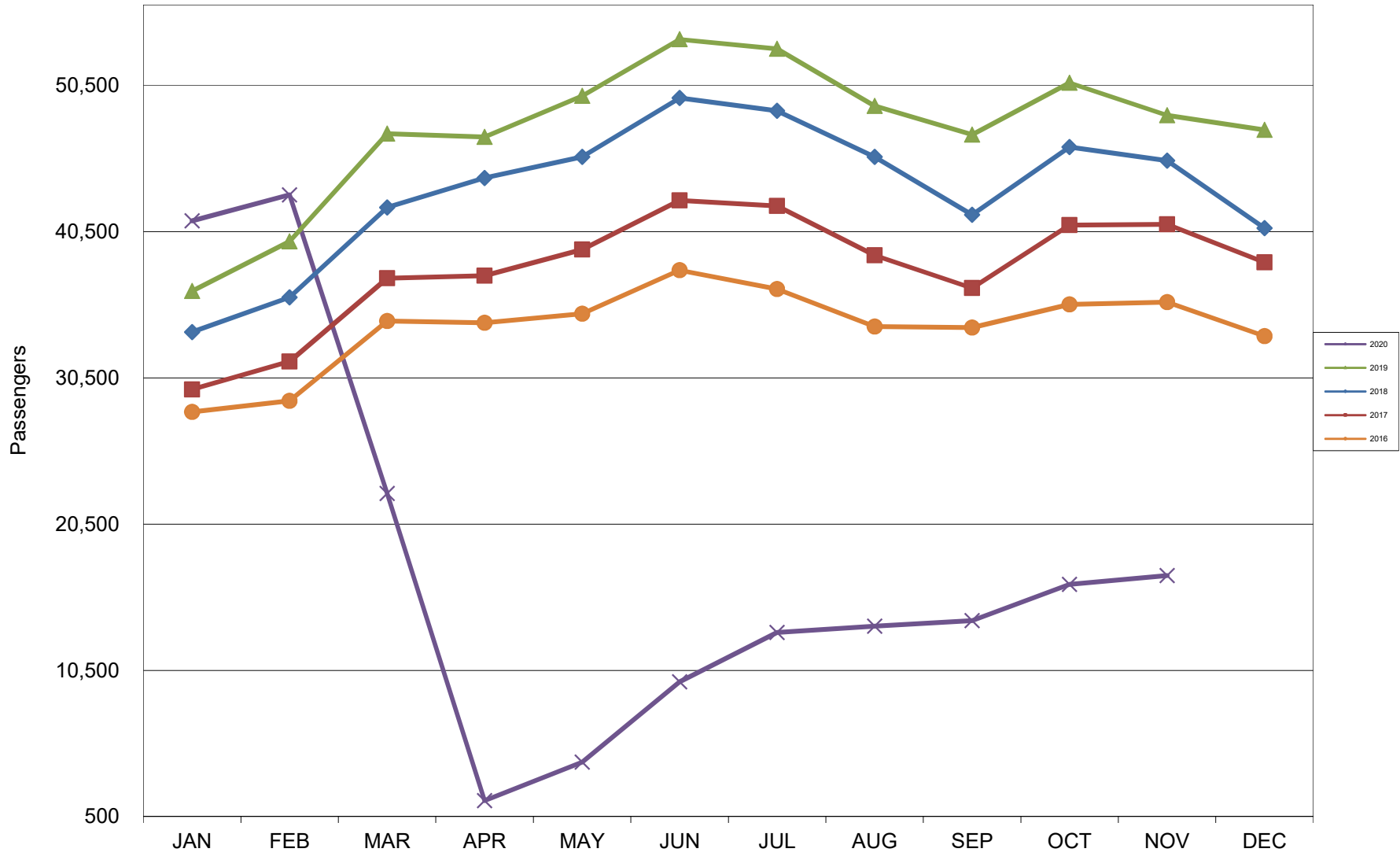
AUSTIN PASSENGER TRAFFIC 5 Year Trend



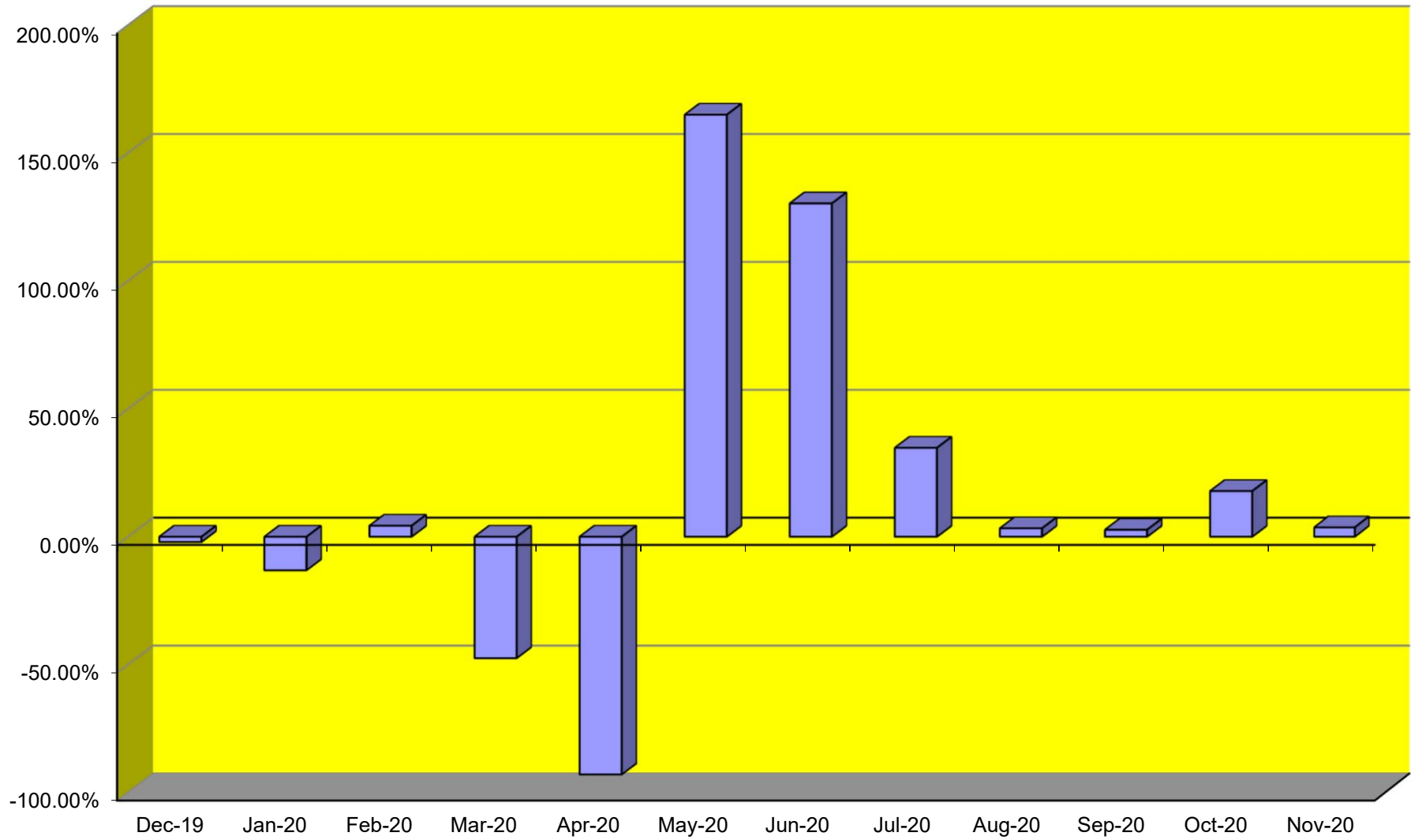
TOTAL CARGO POUNDAGE - AUSTIN, TEXAS



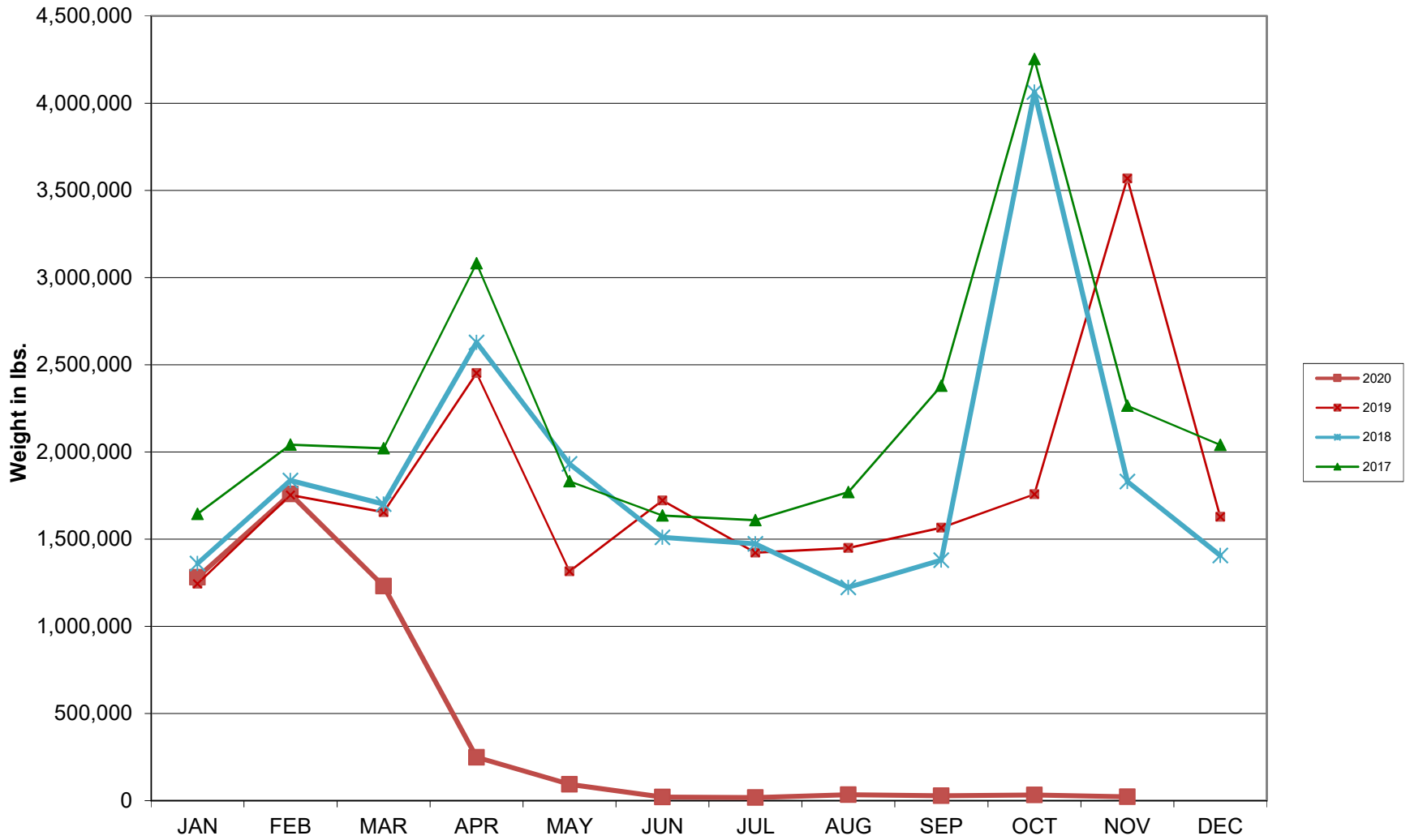
Average Daily Passengers



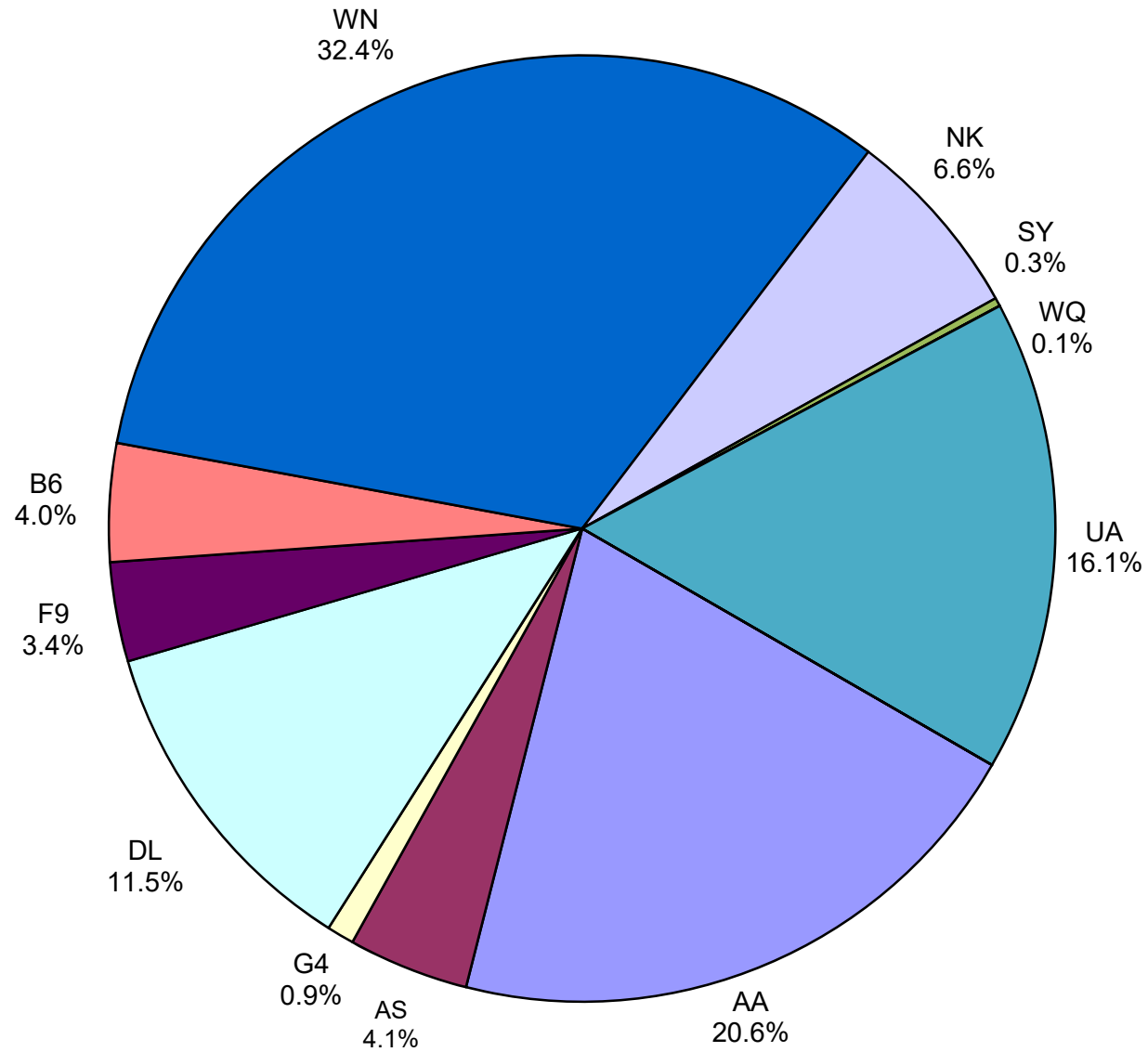
Monthly % Change in Average Daily Passengers



HISTORY OF INTERNATIONAL AIR CARGO



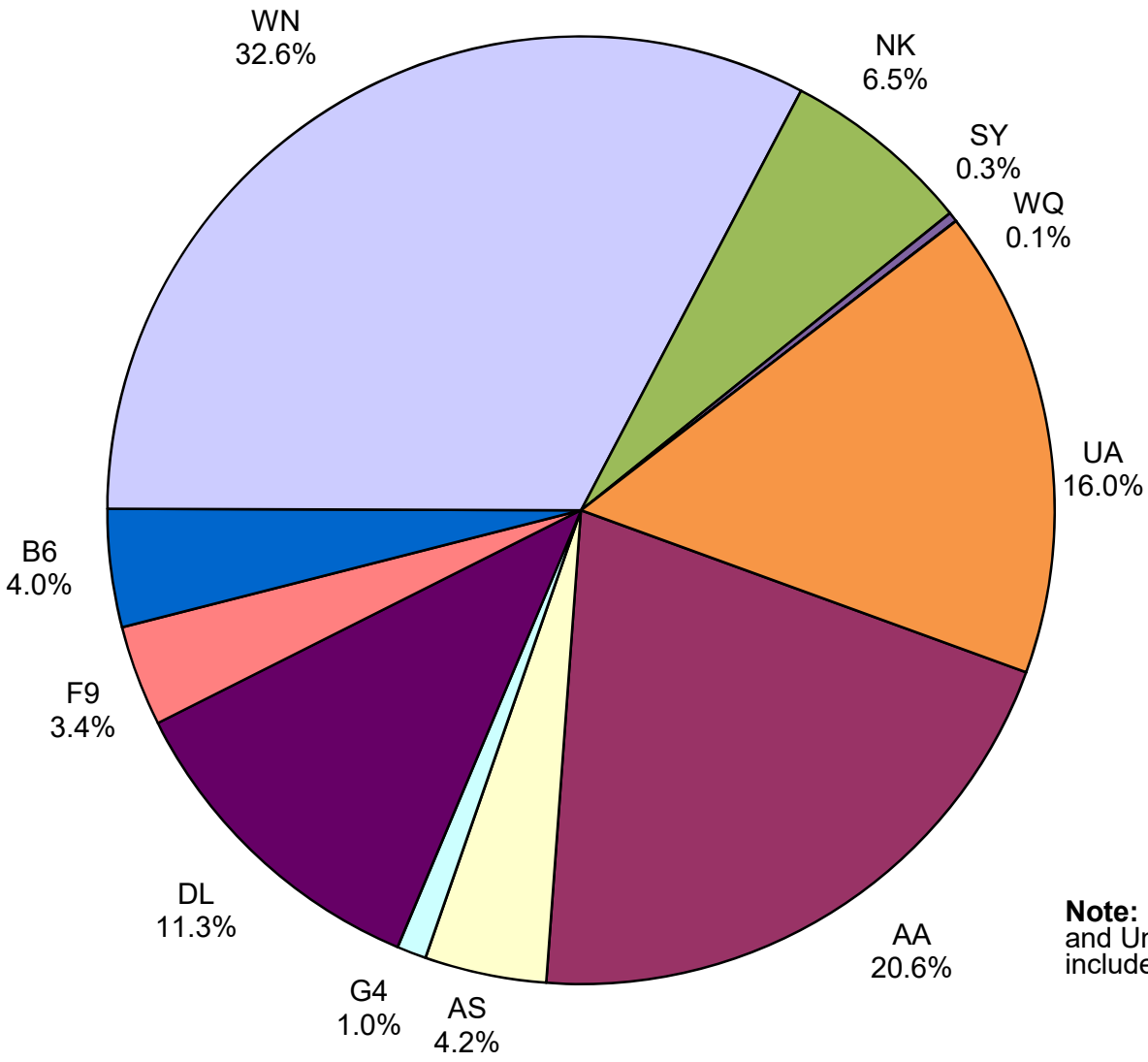
Total Passengers November 2020



Other:

Note: American, Delta and United Airlines percentages include Affiliates.

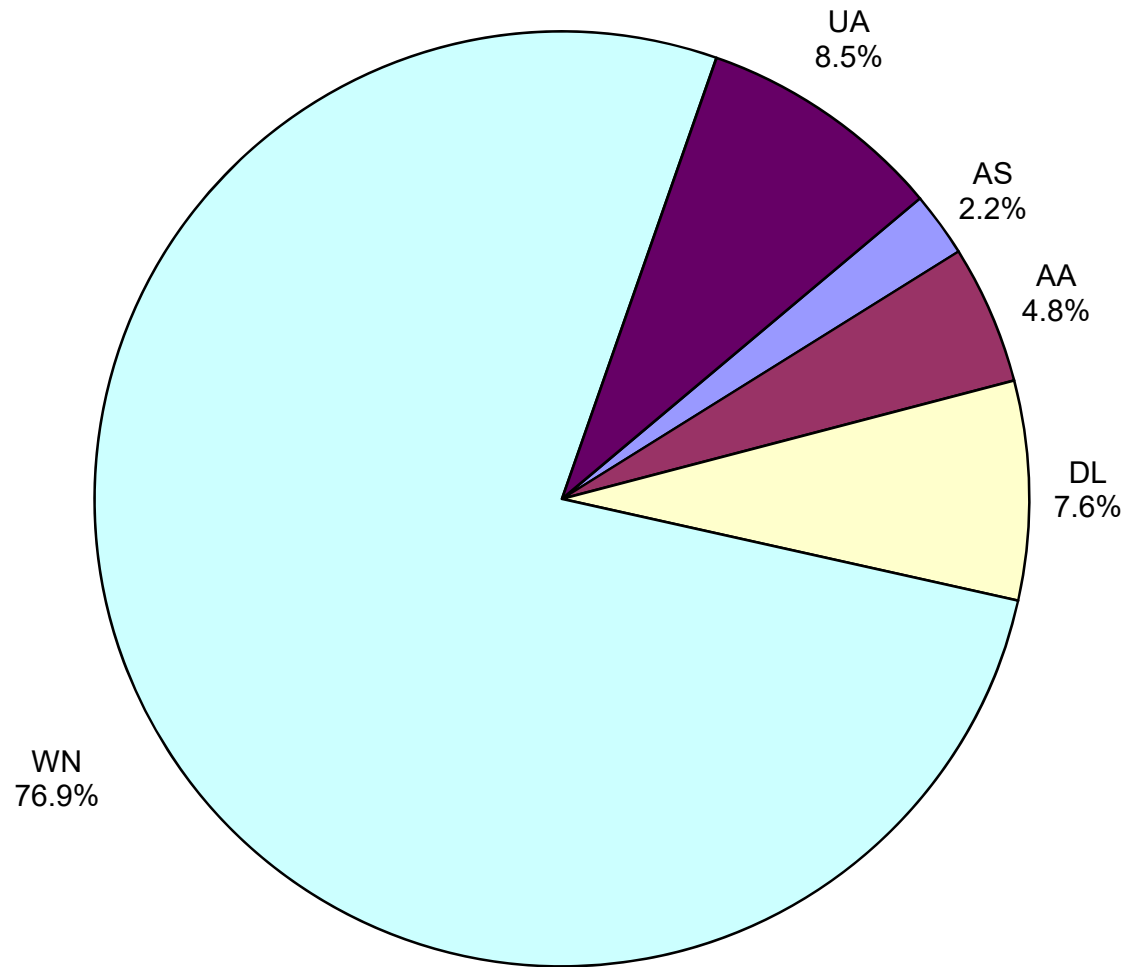
**All Passenger Carriers
Enplaned Revenue Passengers
November 2020**



Other:

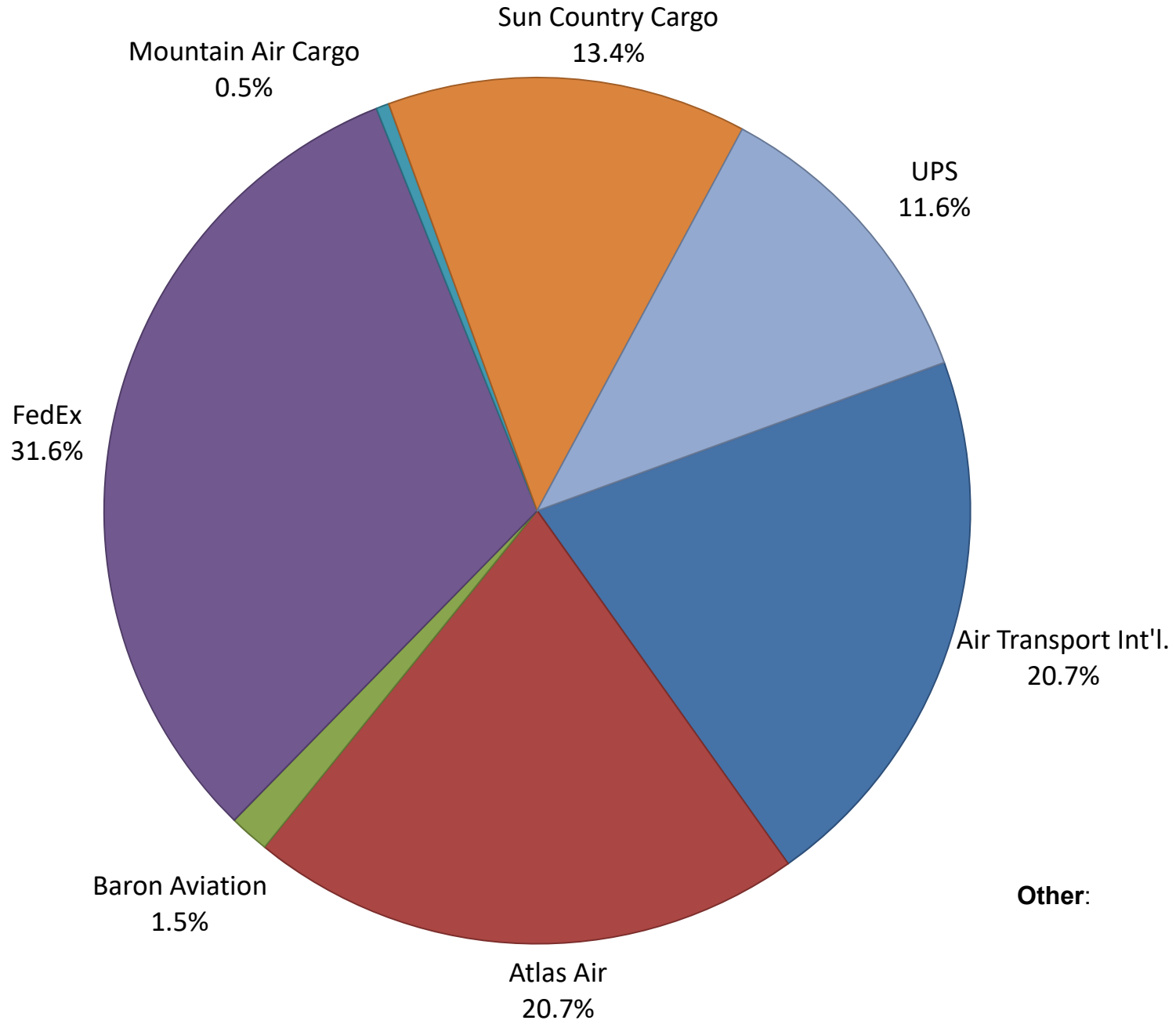
Note: American/US Airways, Delta and United Airlines percentages include Affiliates.

**AUS Belly Freight Market Shares
November 2020**

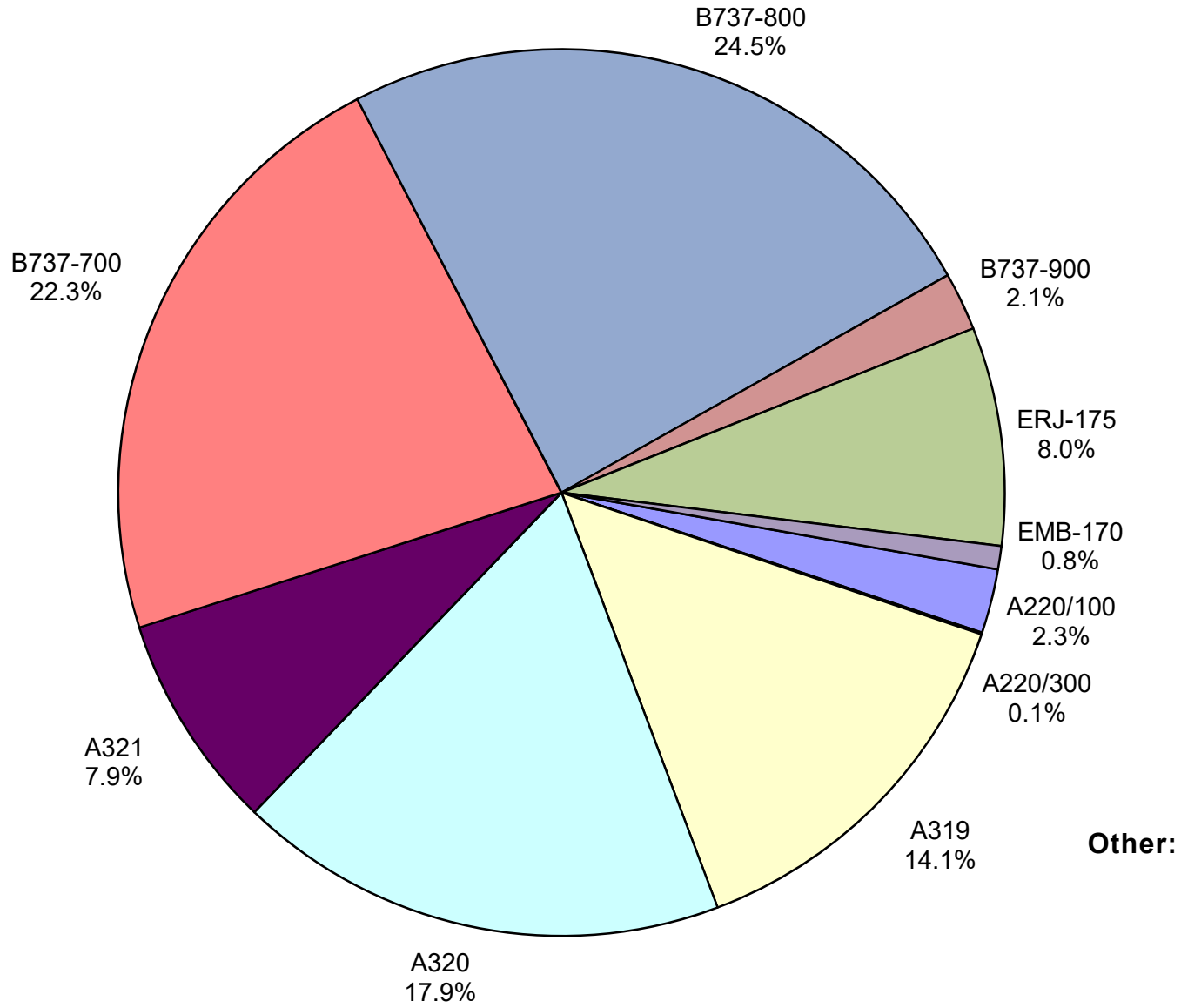


Other =

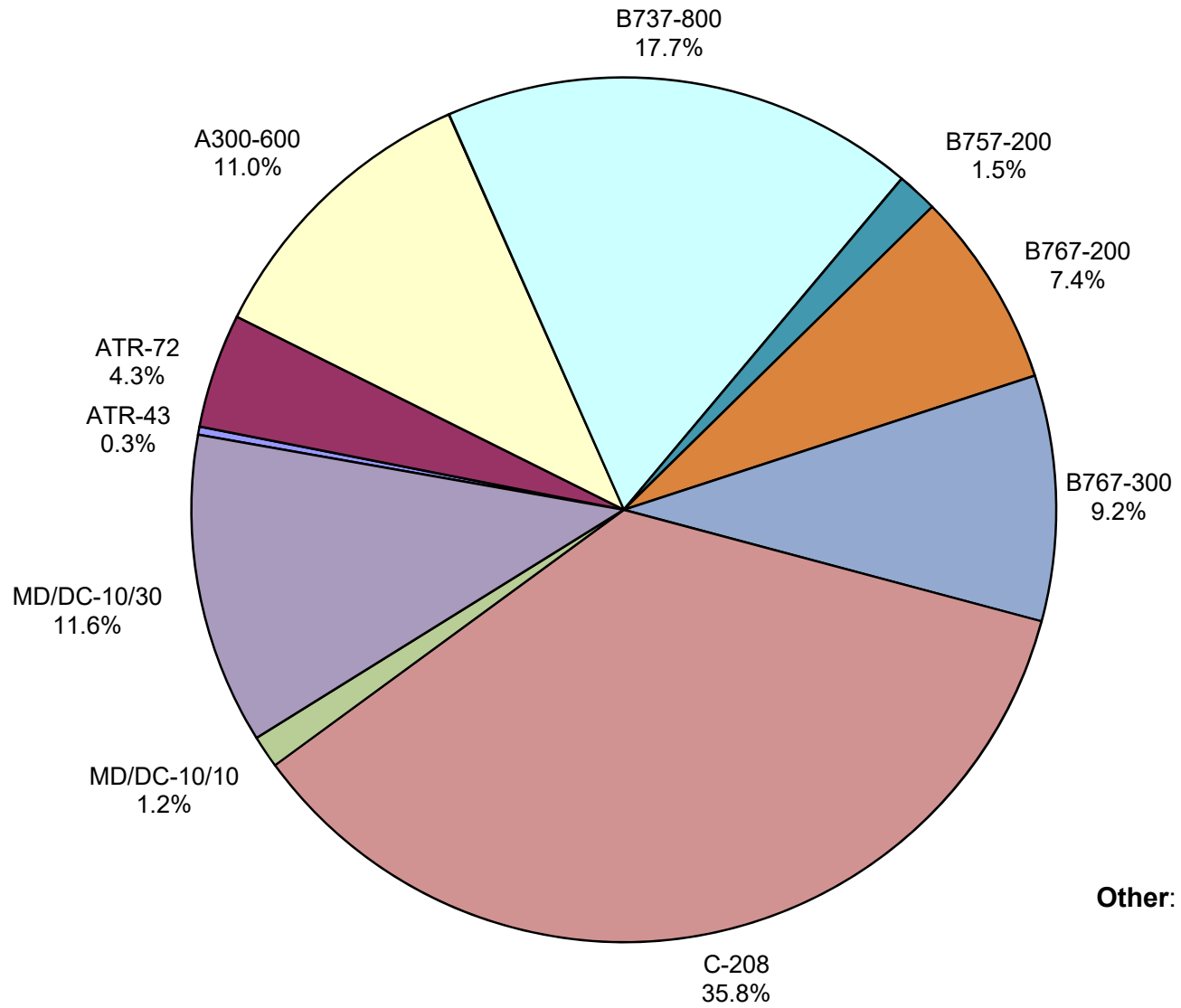
Air Cargo Market Share November 2020



**AUS Scheduled Passenger Aircraft Fleet Mix
November 2020**



**AUS Scheduled Cargo Aircraft Fleet Mix
November 2020**



Austin-Bergstrom International Airport

Pax Detail Report - November, 2020

Company	Period				YTD				2020 Share	2019 Share	Share Diff
	11/2020	11/2019	Difference	Change	YTD 2020	YTD 2019	Difference	Change			
Aeroenlaces Nacionales, SA DE CV	0	0	0	0.0	197	164	33	20.1	0.0	0.0	0.0
Aerovias de Mexico S.A. de C.V. (DIP)	0	0	0	0.0	378	0	378	0.0	0.0	0.0	0.0
Aerovias de Mexico S.A. de C.V. Pre Bankruptcy	0	4,880	-4,880	-100.0	9,915	43,186	-33,271	-77.0	0.2	0.3	-0.1
Air Canada	0	4,824	-4,824	-100.0	10,317	66,097	-55,780	-84.4	0.2	0.4	-0.2
Air New Zealand Limited	0	0	0	0.0	0	302	-302	-100.0	0.0	0.0	0.0
Alaska Airlines INC	21,020	56,744	-35,724	-63.0	243,110	580,240	-337,130	-58.1	4.1	3.7	0.4
Allegiant Air LLC	4,729	12,954	-8,225	-63.5	75,204	170,551	-95,347	-55.9	1.3	1.1	0.2
American Airlines INC	104,984	264,124	-159,140	-60.3	1,237,943	2,827,588	-1,589,645	-56.2	20.8	17.8	3.0
British Airways PLC	0	15,060	-15,060	-100.0	29,217	173,262	-144,045	-83.1	0.5	1.1	-0.6
Concesionaria Vuela Compañía de Aviación, S.A.P.I.	0	0	0	0.0	0	434	-434	-100.0	0.0	0.0	0.0
Delta Air Lines	58,444	192,744	-134,300	-69.7	746,147	2,162,261	-1,416,114	-65.5	12.5	13.6	-1.1
Deutsche Lufthansa AG	0	7,953	-7,953	-100.0	15,883	58,175	-42,292	-72.7	0.3	0.4	-0.1
Frontier Airlines INC	17,294	75,303	-58,009	-77.0	203,478	832,893	-629,415	-75.6	3.4	5.2	-1.8
JetBlue Airways Corporation	20,571	50,930	-30,359	-59.6	190,436	522,503	-332,067	-63.6	3.2	3.3	-0.1
Miami Air International INC Pre Bankruptcy	0	981	-981	-100.0	121	2,396	-2,275	-94.9	0.0	0.0	0.0
Norwegian Air UK LTD	0	0	0	0.0	3,474	62,435	-58,961	-94.4	0.1	0.4	-0.3
Scandinavian Airlines	0	0	0	0.0	0	423	-423	-100.0	0.0	0.0	0.0
Southwest Airlines	165,240	476,335	-311,095	-65.3	1,993,447	5,345,066	-3,351,619	-62.7	33.5	33.7	-0.2
Spirit Airlines Inc	33,438	78,324	-44,886	-57.3	400,945	692,781	-291,836	-42.1	6.7	4.4	2.3
Sun Country Airlines/MN Airlines LLC	1,462	4,487	-3,025	-67.4	11,554	37,133	-25,579	-68.9	0.2	0.2	0.0
Swift Air LLC	70	882	-812	-92.1	1,202	2,729	-1,527	-56.0	0.0	0.0	0.0
United Airlines INC	82,148	206,273	-124,125	-60.2	783,649	2,273,724	-1,490,075	-65.5	13.2	14.3	-1.1
Vacation Express	0	0	0	0.0	0	1,750	-1,750	-100.0	0.0	0.0	0.0
VIA Airlines, INC	0	0	0	0.0	0	3,218	-3,218	-100.0	0.0	0.0	0.0
WestJet	0	619	-619	-100.0	0	13,365	-13,365	-100.0	0.0	0.1	-0.1
Report Totals	509,400	1,453,417	-944,017	-65.0%	5,956,617	15,872,676	-9,916,059	-62.5%	100.0%	100.0%	

Statistics Included in Report

Domestic Passengers: Enplaned Revenue, Deplaned Revenue, Enplaned Non-Revenue, Deplaned Non-Revenue

International Passengers: Enplaned Revenue, Deplaned Revenue, Enplaned Non-Revenue, Deplaned Non-Revenue

International Pre-Cleared Passengers: Enplaned Revenue, Deplaned Revenue, Enplaned Non-Revenue, Deplaned Non-Revenue

South Terminal Domestic Passengers: Enplaned Revenue, Deplaned Revenue, Enplaned Non-Revenue, Deplaned Non-Revenue

Austin-Bergstrom International Airport

Summary Landings Report

Landing Type: Total

Month	2020		2019		2018		% Change 2020- 2019		% Change 2019- 2018	
	Count	Weight	Count	Weight	Count	Weight	Count	Weight	Count	Weight
January	5,762	812,175,948	5,348	733,746,679	5,086	688,923,110	7.74%	10.69%	5.15%	6.51%
February	5,382	764,833,023	5,040	692,708,930	4,706	637,500,756	6.79%	10.41%	7.10%	8.66%
March	5,278	742,099,772	5,964	825,483,911	5,643	760,648,260	-11.50%	-10.10%	5.69%	8.52%
April	1,884	264,508,162	5,899	815,621,798	5,797	793,367,736	-68.06%	-67.57%	1.76%	2.81%
May	1,608	223,266,578	6,294	881,747,150	6,117	831,431,763	-74.45%	-74.68%	2.89%	6.05%
June	2,119	293,669,395	6,322	890,410,020	6,211	852,438,818	-66.48%	-67.02%	1.79%	4.45%
July	3,401	458,639,882	6,551	915,103,306	6,346	869,502,671	-48.08%	-49.88%	3.23%	5.24%
August	3,390	473,872,571	6,447	906,499,773	6,245	861,046,997	-47.42%	-47.73%	3.23%	5.28%
September	2,791	378,925,681	6,020	848,899,951	5,737	790,731,351	-53.64%	-55.36%	4.93%	7.36%
October	2,972	409,225,230	6,459	916,700,076	6,078	846,310,860	-53.99%	-55.36%	6.24%	8.32%
November	3,157	438,563,290	5,924	836,527,780	5,684	780,994,101	-47.57%	-47.57%	4.22%	7.11%
December	0	0	6,078	848,973,148	5,600	761,317,385	-100.00%	-100.00%	8.54%	11.51%
Totals For Selected										
Period	37,744	5,259,779,532	66,268	9,263,449,374	63,650	8,712,896,423	-43.04%	-43.22%	4.11%	6.32%
Yearly Totals	37,744	5,259,779,532	72,346	10,112,422,522	69,250	9,474,213,808	-47.83%	-47.99%	4.47%	6.74%