

**Austin-Bergstrom International Airport
Aviation Activity Report
Calendar Year 2018 vs 2017**

Combined Terminals

	4/2018	4/2017	Percent Change	1/2018 - 4/2018	1/2017 - 4/2017	Percent Change
ABIA						
Total Passenger Activity						
Domestic Enplaned Revenue	628,631	535,065	17.49	2,169,651	1,934,738	12.14
Domestic Deplaned Revenue	604,324	522,207	15.72	2,187,717	1,944,527	12.51
International Enplaned Revenue	16,659	11,635	43.18	49,519	42,101	17.62
International Deplaned Revenue	15,307	11,118	37.68	51,555	42,462	21.41
Domestic Enplaned Non-Revenue	13,526	13,578	-0.38	53,004	49,009	8.15
Domestic Deplaned Non-Revenue	13,212	13,027	1.42	50,399	47,152	6.89
International Enplaned Non-Revenue	119	84	41.67	495	323	53.25
International Deplaned Non-Revenue	78	98	-20.41	348	295	17.97
Intl Enplaned Pre-Cleared Revenue	1,900	1,862	2.04	6,824	6,270	8.84
Intl Deplaned Pre-Cleared Revenue	1,862	1,885	-1.22	7,226	6,740	7.21
Intl Enplaned Pre-Cleared Non-Revenue	38	25	52.00	109	92	18.48
Intl Deplaned Pre-Cleared Non-Revenue	35	36	-2.78	107	110	-2.73
South Terminal Domestic Enplaned Revenue	15,004	7,079	111.95	52,579	7,079	642.75
South Terminal Domestic Deplaned Revenue	14,243	6,926	105.65	53,054	6,926	666.01
South Terminal Domestic Enplaned Non-Revenue	0	0	0.00	12	0	0.00
South Terminal Domestic Deplaned Non-Revenue	0	0	0.00	13	0	0.00
ABIA Passenger Totals	1,324,938	1,124,625	17.81	4,682,612	4,087,824	14.55
<i>ABIA Enplaned Passenger Totals</i>	<i>675,877</i>	<i>569,328</i>	<i>18.71</i>	<i>2,332,193</i>	<i>2,039,612</i>	<i>14.34</i>
<i>ABIA Deplaned Passenger Totals</i>	<i>649,061</i>	<i>555,297</i>	<i>16.89</i>	<i>2,350,419</i>	<i>2,048,212</i>	<i>14.75</i>
<i>ABIA Domestic Passenger Totals</i>	<i>1,288,940</i>	<i>1,097,882</i>	<i>17.40</i>	<i>4,566,429</i>	<i>3,989,431</i>	<i>14.46</i>
<i>ABIA International Passenger Totals</i>	<i>35,998</i>	<i>26,743</i>	<i>34.61</i>	<i>116,183</i>	<i>98,393</i>	<i>18.08</i>

CURRENT PASSENGER RECORD = 1,324,938 RECORD SET = APRIL 2018

Total Aircraft Operations

Air Carrier	11,295	10,079	12.06	41,224	38,272	7.71
Commuter & Air Taxi	1,385	1,416	-2.19	5,781	5,264	9.82
Military	1,119	702	59.40	3,006	3,328	-9.68
General Aviation						
Itinerant	4,221	4,320	-2.29	15,318	17,141	-10.64
Local	124	188	-34.04	553	712	-22.33
Total G.A.	4,345	4,508	-3.62	15,871	17,853	-11.10
Total Operations	18,144	16,705	8.61	65,882	64,717	1.80

**Austin-Bergstrom International Airport
Aviation Activity Report
Calendar Year 2018 vs 2017**

By Terminal

	4/2018	4/2017	Percent Change	1/2018 - 4/2018	1/2017 - 4/2017	Percent Change
Barbara Jordan Terminal (BJT)						
Passenger Activity						
Domestic Enplaned Revenue	628,631	535,065	17.49	2,169,651	1,934,738	12.14
Domestic Deplaned Revenue	604,324	522,207	15.72	2,187,717	1,944,527	12.51
International Enplaned Revenue	16,659	11,635	43.18	49,519	42,101	17.62
International Deplaned Revenue	15,307	11,118	37.68	51,555	42,462	21.41
Domestic Enplaned Non-Revenue	13,526	13,578	-0.38	53,004	49,009	8.15
Domestic Deplaned Non-Revenue	13,212	13,027	1.42	50,399	47,152	6.89
International Enplaned Non-Revenue	119	84	41.67	495	323	53.25
International Deplaned Non-Revenue	78	98	-20.41	348	295	17.97
Intl Enplaned Pre-Cleared Revenue	1,900	1,862	2.04	6,824	6,270	8.84
Intl Deplaned Pre-Cleared Revenue	1,862	1,885	-1.22	7,226	6,740	7.21
Intl Enplaned Pre-Cleared Non-Revenue	38	25	52.00	109	92	18.48
Intl Deplaned Pre-Cleared Non-Revenue	35	36	-2.78	107	110	-2.73

Barbara Jordan Terminal Passenger Totals	1,295,691	1,110,620	16.66	4,576,954	4,073,819	12.35
---	------------------	------------------	--------------	------------------	------------------	--------------

<i>BJT Enplaned Passenger Totals</i>	660,873	562,249	17.54	2,279,602	2,032,533	12.16
<i>BJT Deplaned Passenger Totals</i>	634,818	548,371	15.76	2,297,352	2,041,286	12.54
<i>BJT Domestic Passenger Totals</i>	1,259,693	1,083,877	16.22	4,460,771	3,975,426	12.21
<i>BJT International Passenger Totals</i>	35,998	26,743	34.61	116,183	98,393	18.08

South Terminal (ST)

Passenger Activity

South Terminal Domestic Enplaned Revenue	15,004	7079	111.95	52,579	7079	642.75
South Terminal Domestic Deplaned Revenue	14,243	6926	105.65	53,054	6926	666.01
South Terminal Domestic Enplaned Non-Revenue	0	0	0.00	12	0	0.00
South Terminal Domestic Deplaned Non-Revenue	0	0	0.00	13	0	0.00

South Terminal Passenger Totals	29,247	14,005	108.83	105,658	14,005	654.43
--	---------------	---------------	---------------	----------------	---------------	---------------

<i>ST Enplaned Passenger Totals</i>	15,004	7,079	111.95	52,591	7,079	642.92
<i>ST Deplaned Passenger Totals</i>	14,243	6,926	105.65	53,067	6,926	666.20

**Austin-Bergstrom International Airport
Aviation Activity Report
Calendar Year 2018 vs 2017**

	4/2018	4/2017	Percent Change	1/2018 - 4/2018	1/2017 - 4/2017	Percent Change
<u>Total Cargo Activity</u>						
Mail						
Domestic Enplaned Mail	207,257	197,949	4.70	721,722	761,575	-5.23
Domestic Deplaned Mail	441,990	386,634	14.32	1,611,024	1,296,396	24.27
International Enplaned Mail	0	0	0.00	0	0	0.00
International Deplaned Mail	0	0	0.00	0	0	0.00
South Terminal-Intl Enplaned Mail	0	0	0.00	0	0	0.00
South Terminal-Intl Deplaned Mail	0	0	0.00	0	0	0.00
Mail Totals	649,247	584,583	11.06	2,332,746	2,057,971	13.35
Cargo						
Domestic Enplaned Cargo	4,564,190	4,821,616	-5.34	19,345,175	19,095,493	1.31
Domestic Deplaned Cargo	6,475,930	7,134,693	-9.23	27,127,865	27,012,335	0.43
International Enplaned Cargo	910,433	1,217,525	-25.22	2,544,587	3,170,231	-19.73
International Deplaned Cargo	949,085	1,097,567	-13.53	1,519,487	1,900,649	-20.05
South Terminal-Intl Enplaned Cargo	0	0	0.00	0	0	0.00
South Terminal-Intl Deplaned Cargo	0	0	0.00	0	0	0.00
Cargo Totals	12,899,638	14,271,401	-9.61	50,537,114	51,178,708	-1.25
Belly Freight						
Domestic Enplaned Belly Freight	327,479	328,731	-0.38	1,027,467	986,367	4.17
Domestic Deplaned Belly Freight	521,126	611,195	-14.74	1,710,349	1,944,262	-12.03
International Enplaned Belly Freight	264,616	194,817	35.83	1,122,277	889,610	26.15
International Deplaned Belly Freight	502,965	572,009	-12.07	2,337,105	2,826,942	-17.33
South Terminal-Intl Enplaned Belly Freight	0	0	0.00	0	0	0.00
South Terminal-Intl Deplaned Belly Freight	0	0	0.00	0	0	0.00
Belly Freight Totals	1,616,186	1,706,752	-5.31	6,197,198	6,647,181	-6.77
Cargo Totals (Mail, Cargo, Belly Freight)	15,165,071	16,562,736	-8.44	59,067,058	59,883,860	-1.36
<i>Enplaned Cargo Totals</i>	6,273,975	6,760,638	-7.20	24,761,228	24,903,276	-0.57
<i>Deplaned Cargo Totals</i>	8,891,096	9,802,098	-9.29	34,305,830	34,980,584	-1.93
<i>Domestic Cargo Totals</i>	12,537,972	13,480,818	-6.99	51,543,602	51,096,428	0.88
<i>International Cargo Totals</i>	2,627,099	3,081,918	-14.76	7,523,456	8,787,432	-14.38

CURRENT CARGO RECORD = 40,215,518

RECORD SET = MARCH 2001

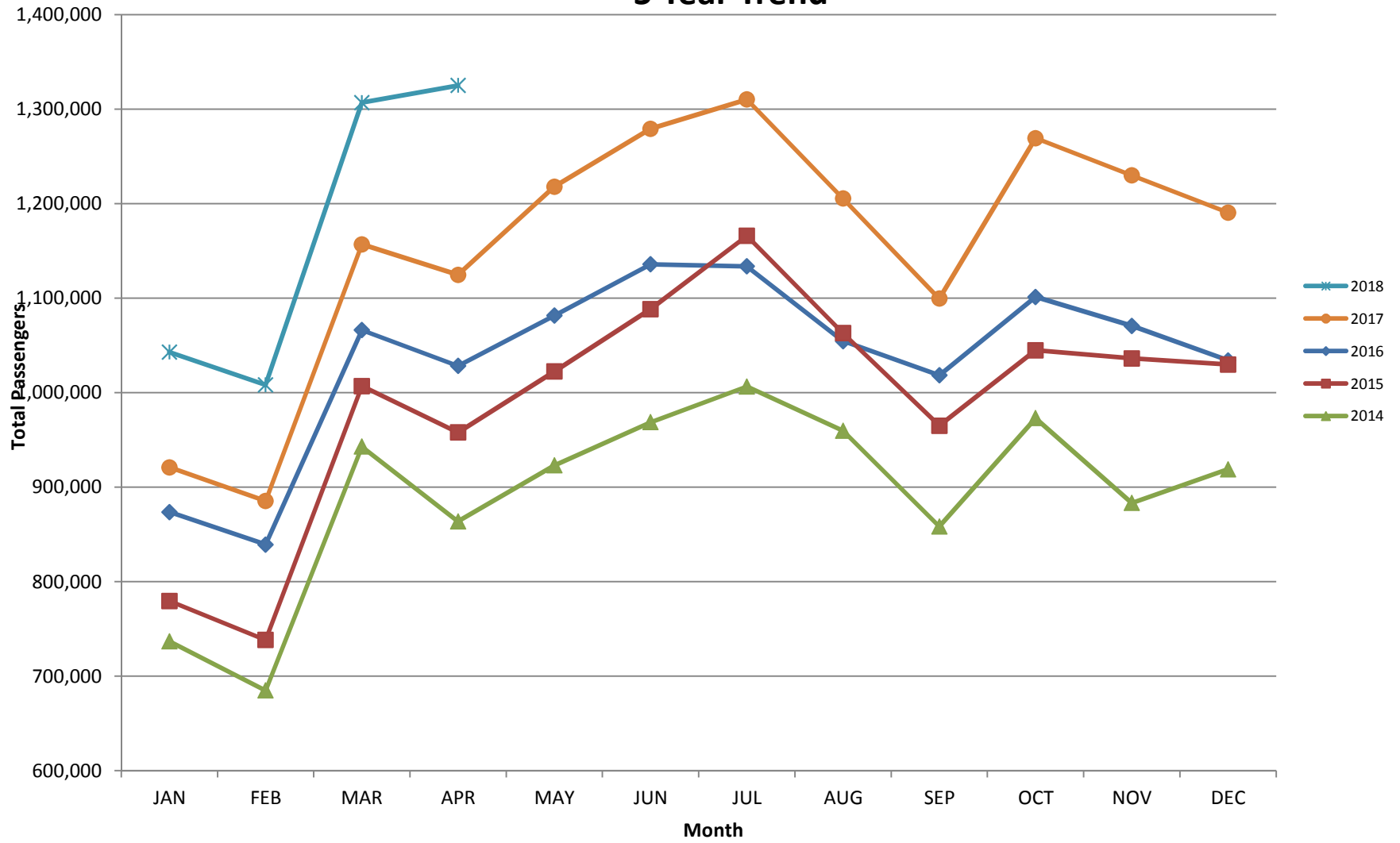
AUS – Airline Codes

April 2018

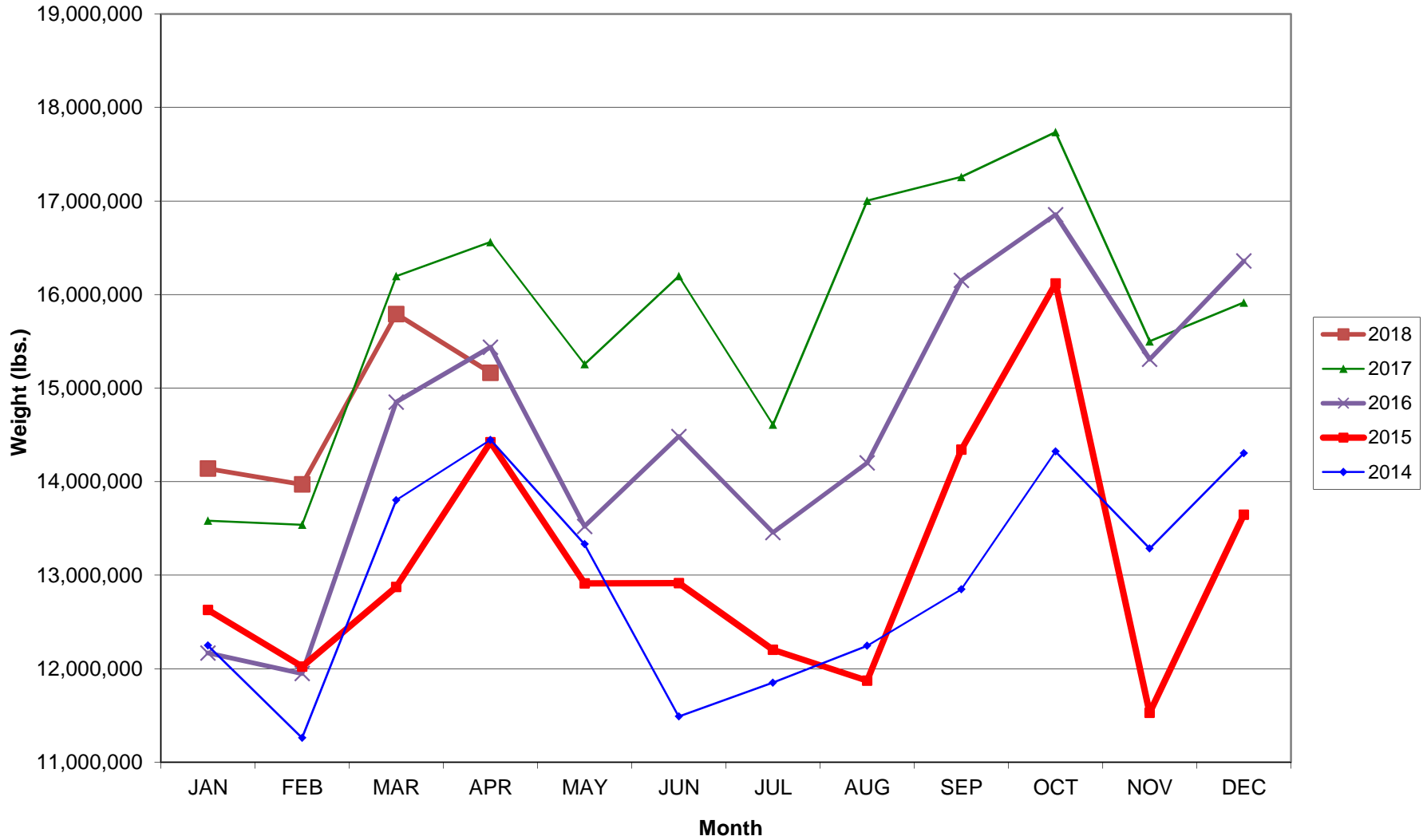
<u>Code</u>	<u>Carrier</u>
AM	Aerovias de Mexico S.A. de C.V. dba AeroMexico Airlines
AC	Air Canada
AS	Alaska Airlines, Inc. (Includes Virgin America. Merger effective 2/1/2018)
G4	Allegiant Air, LLC
AA	American Airlines, Inc.
BA	British Airways Plc
Y4	Concesionaria Vuela Compañía de Aviación, S.A.P.I. de C.V dba Volaris
DL	Delta Airlines
F9	Frontier Airlines
B6	JetBlue Airways Corp.
DY	Norwegian Air UK, Ltd.
WN	Southwest Airlines
SY	Sun Country Airlines/ MN Airlines, LLC
WQ	Swift Air
UA	United Airlines, Inc.
VC	VIA Airlines

AUSTIN PASSENGER TRAFFIC

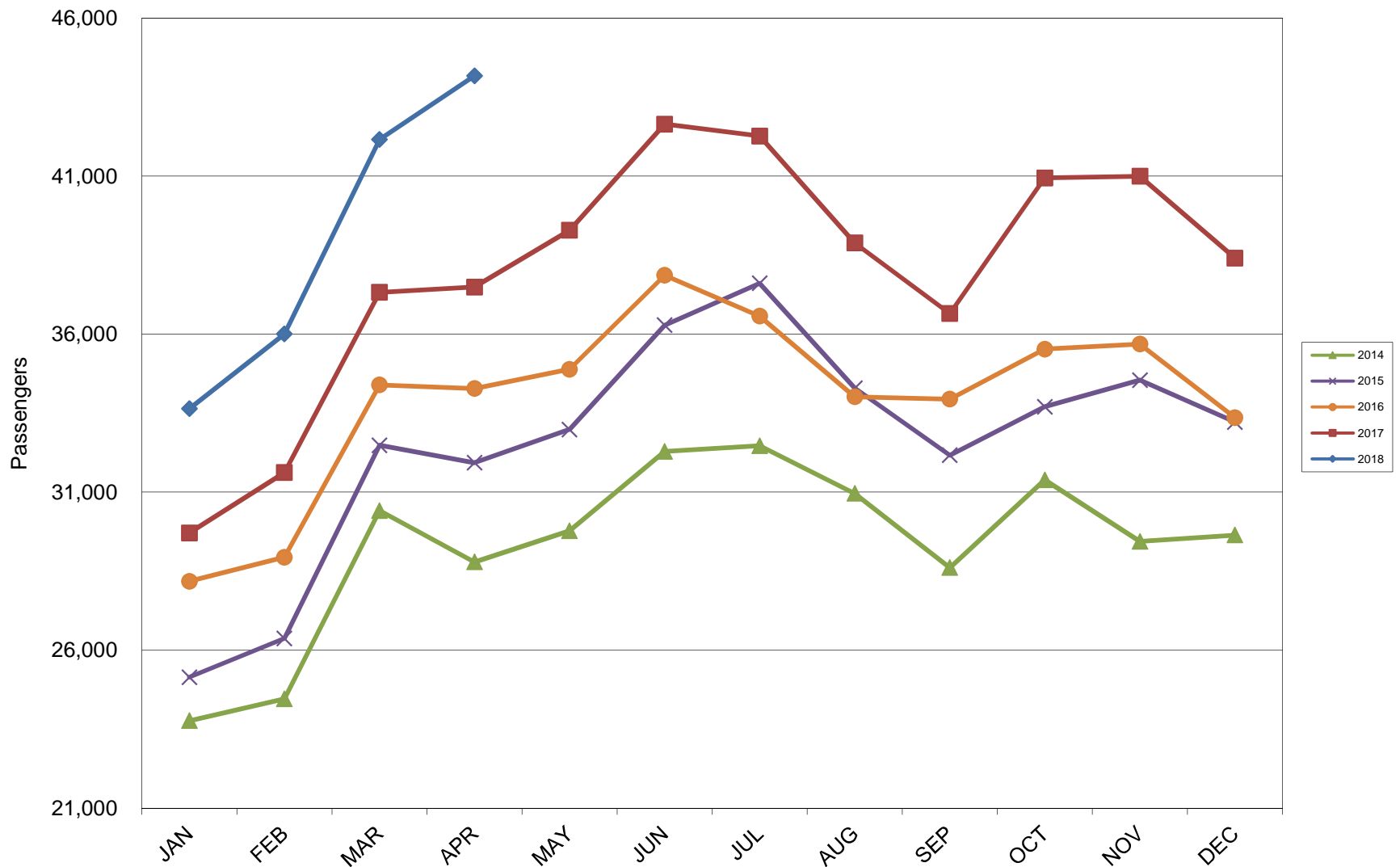
5 Year Trend



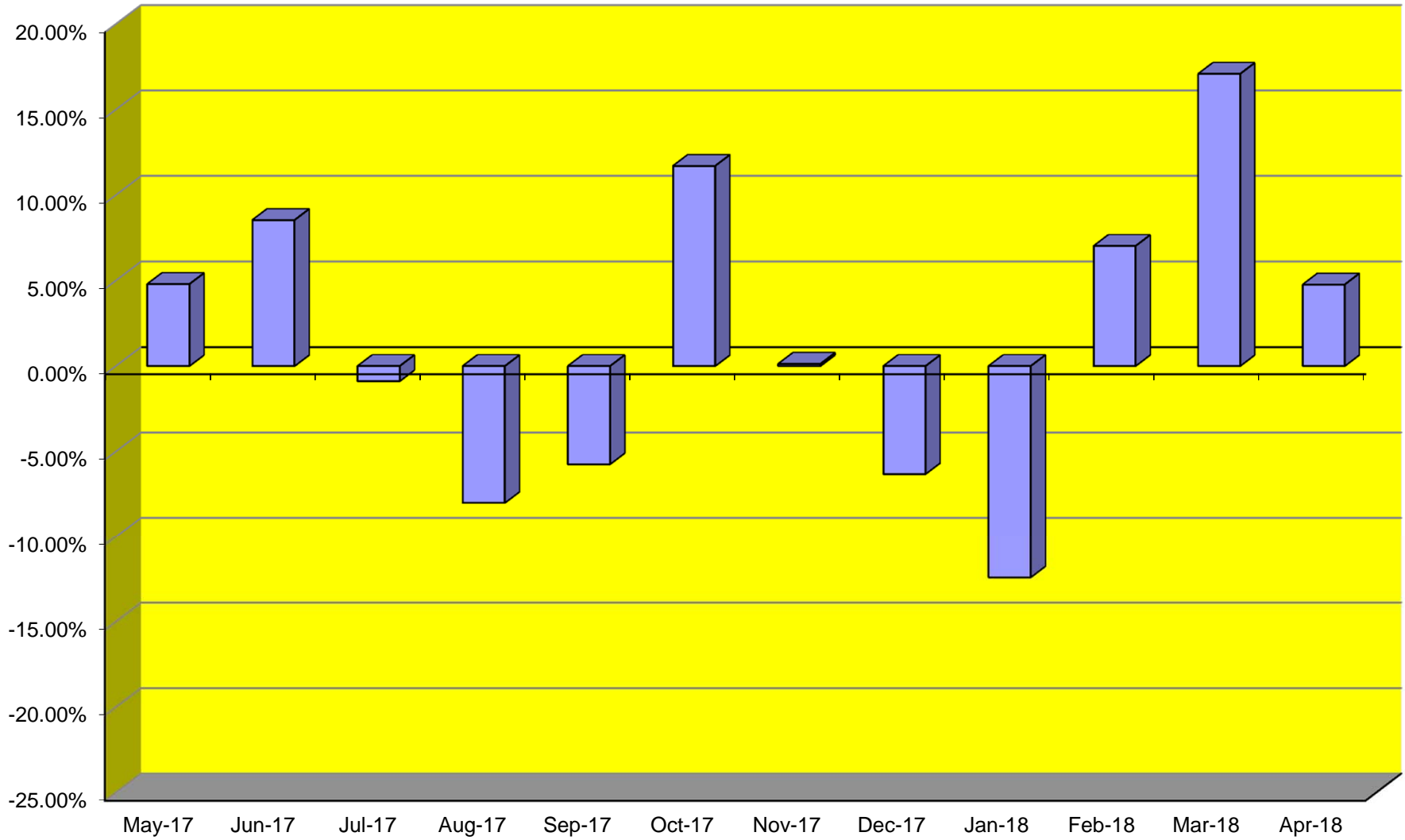
TOTAL CARGO POUNDAGE - AUSTIN, TEXAS



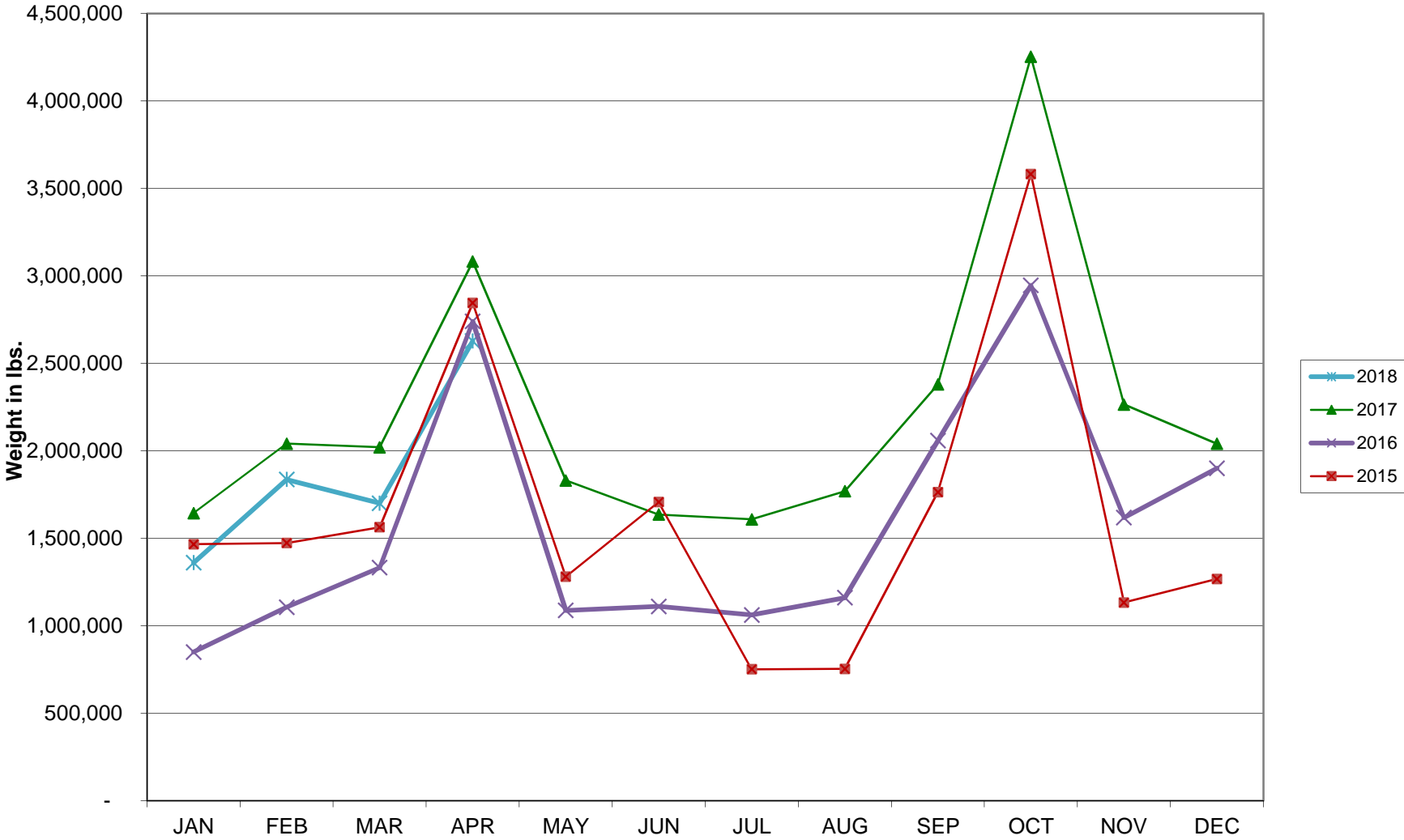
Average Daily Passengers



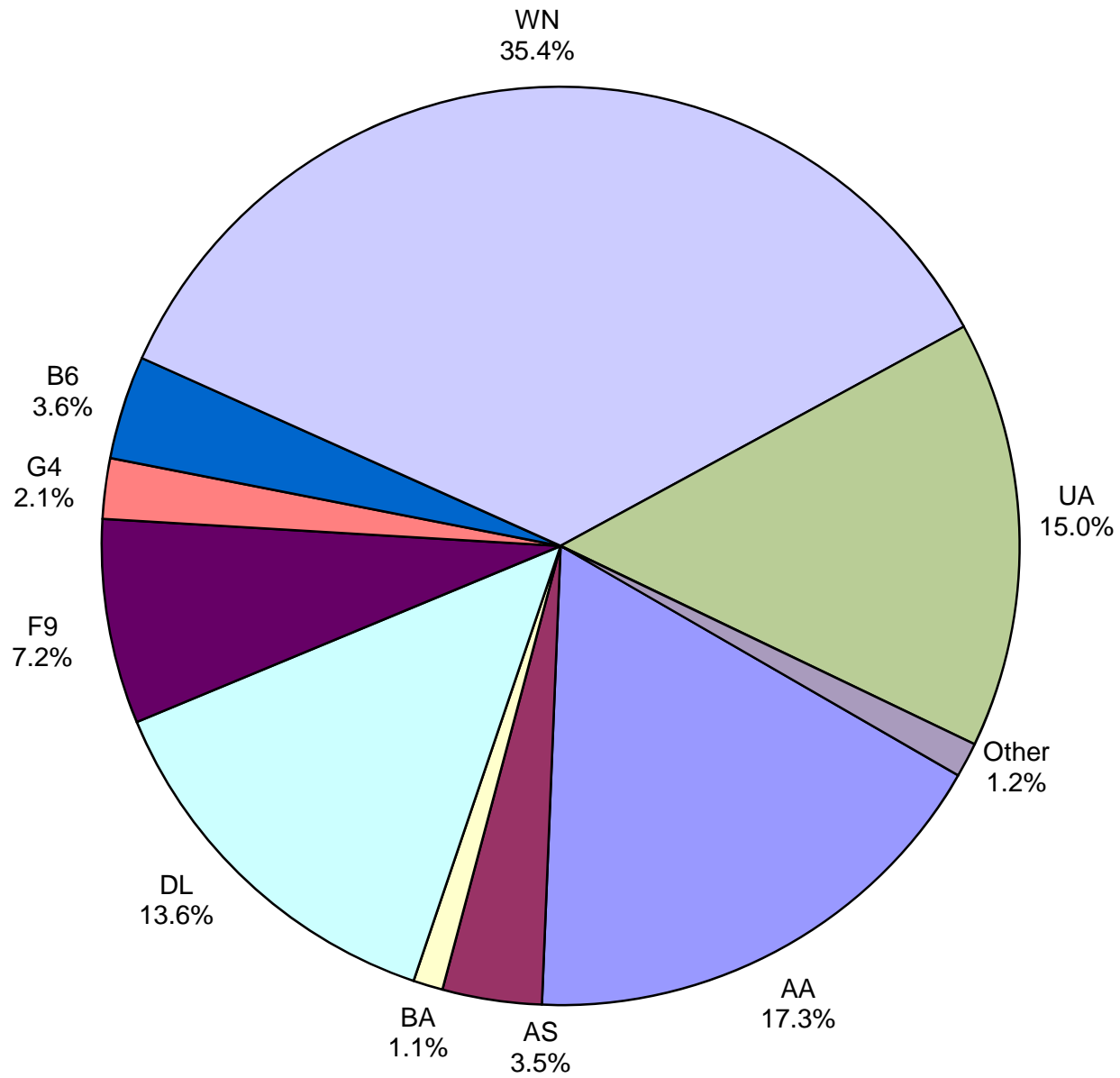
Monthly % Change in Average Daily Passengers



HISTORY OF INTERNATIONAL AIR CARGO



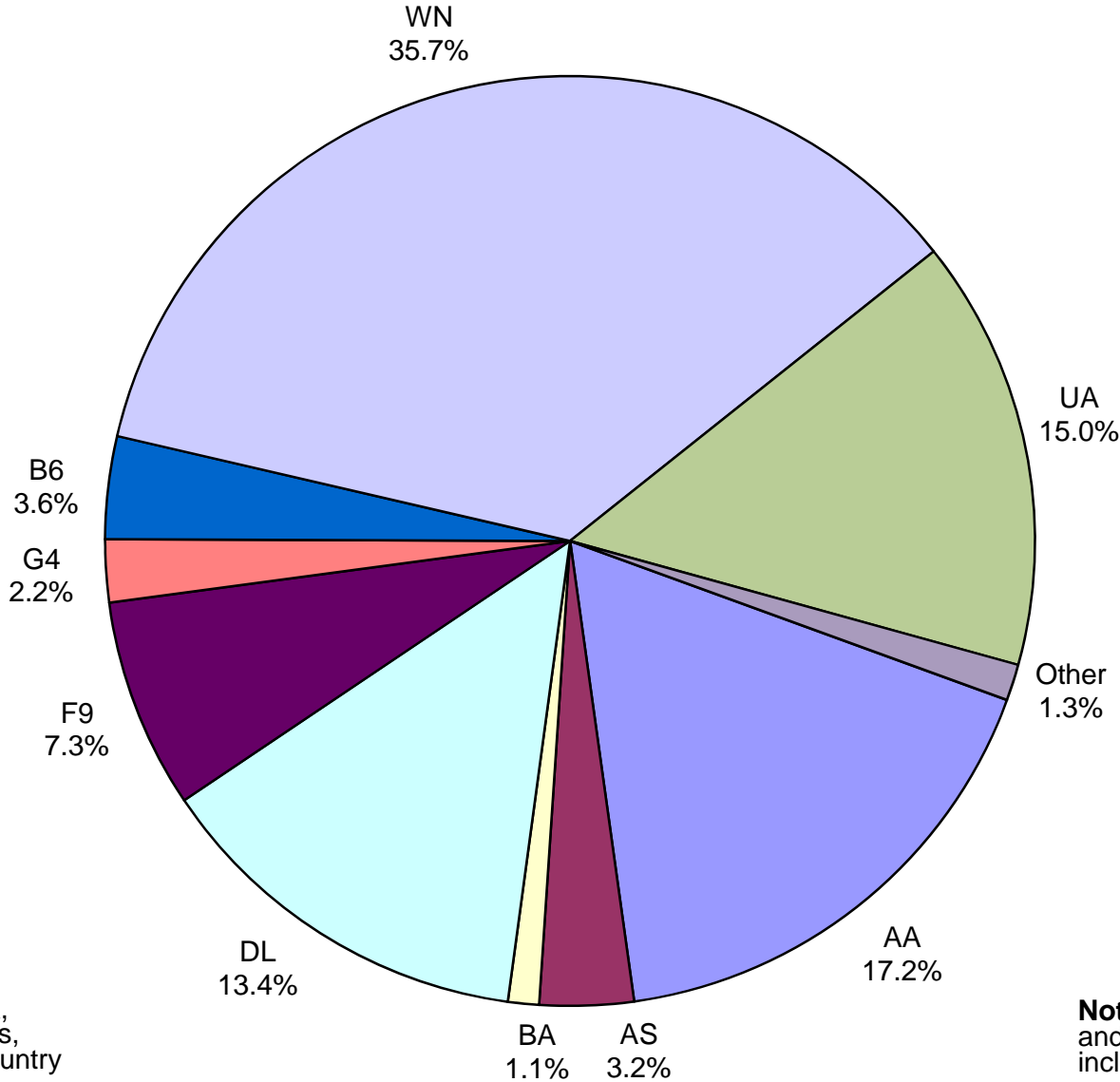
**Total Passengers
April 2018**



Other: Aeromexico, Air Canada LLC, Norwegian Air UK, Ltd., Sun Country, VIA Airlines and Concesionaria Vuela dba Volaris

Note: American, Delta and United Airlines percentages include Affiliates.

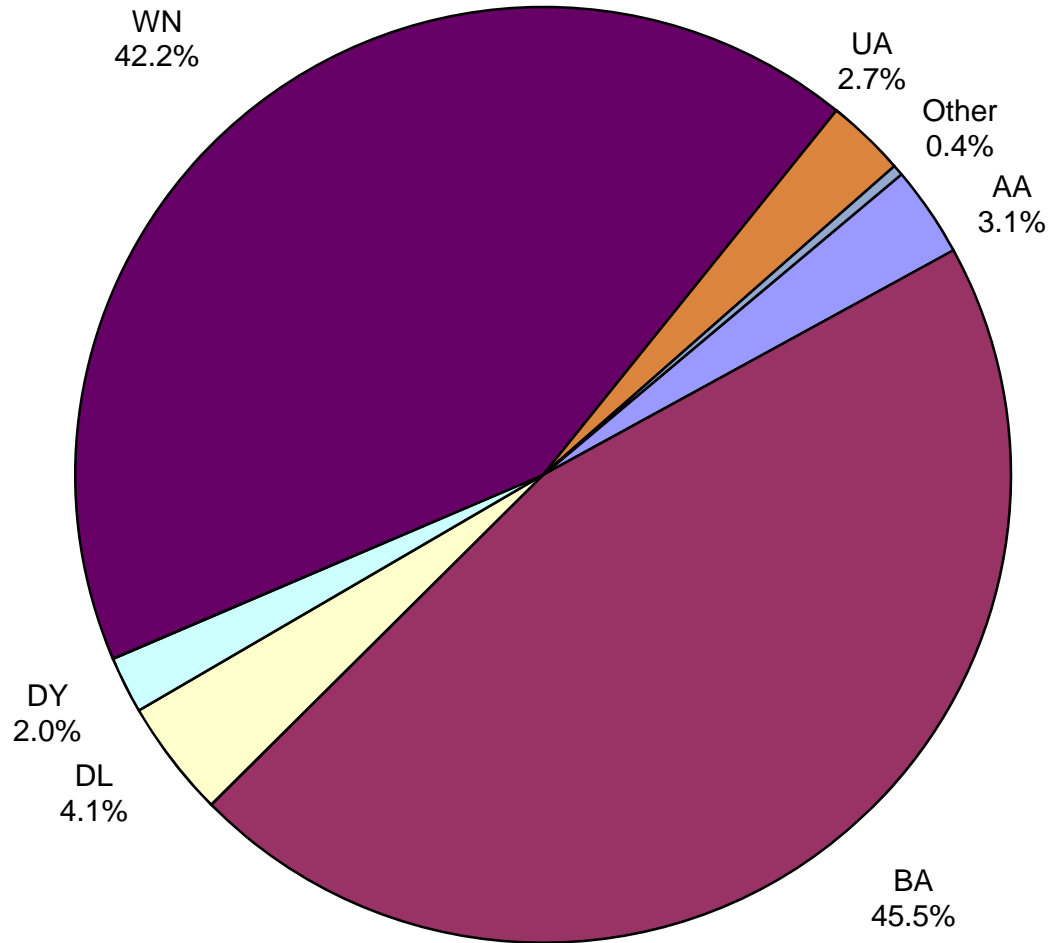
**All Passenger Carriers
Enplaned Revenue Passengers
April 2018**



Other: Aeromexico, Air Canada, Concesionaria Vuela dba Volaris, Norwegian Air UK Ltd., Sun Country and VIA Airlines

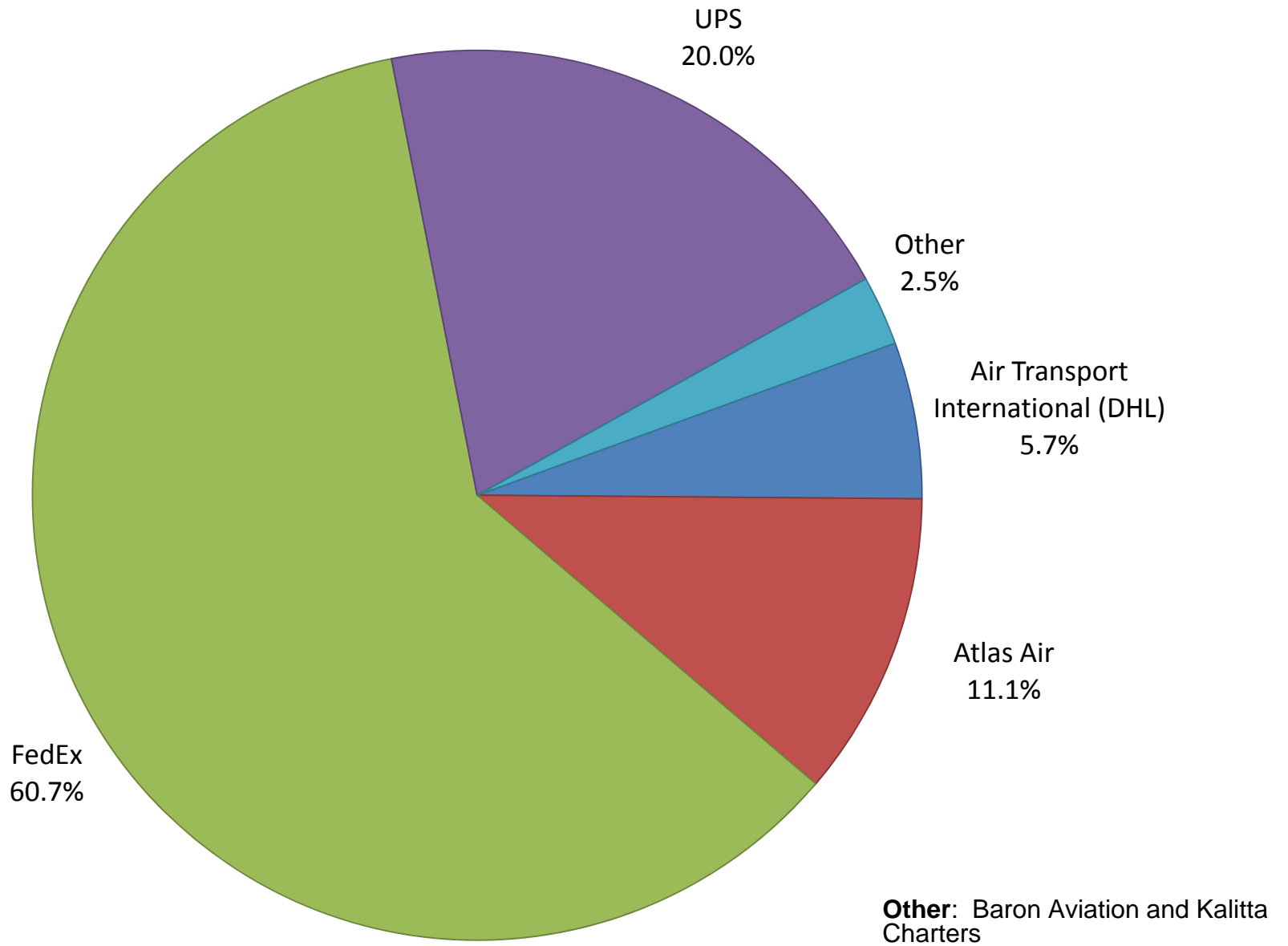
Note: American/US Airways, Delta and United Airlines percentages include Affiliates.

**AUS Belly Freight Market Shares
April 2018**

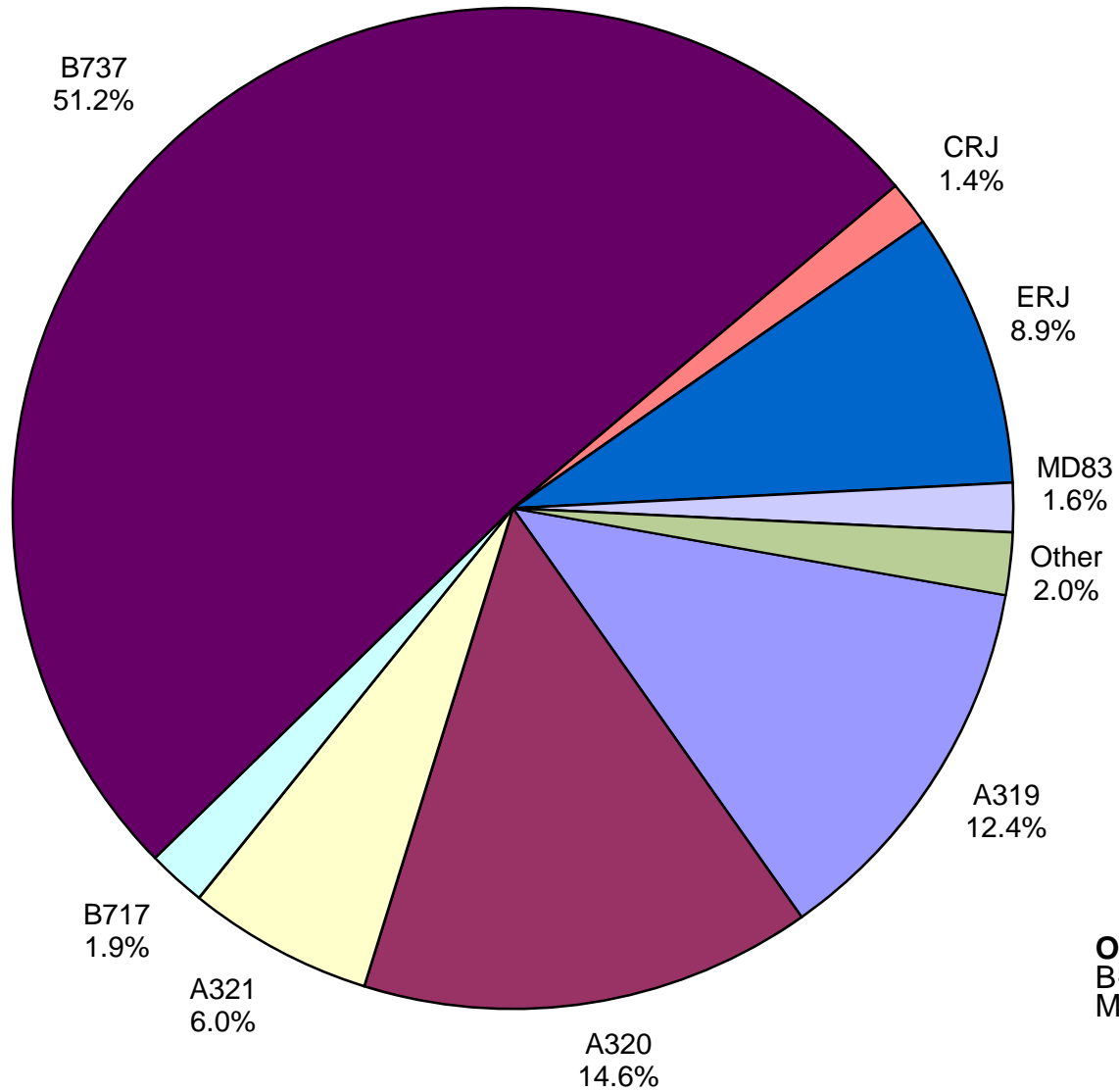


Other = Alaska Airlines

Air Cargo Market Share April 2018

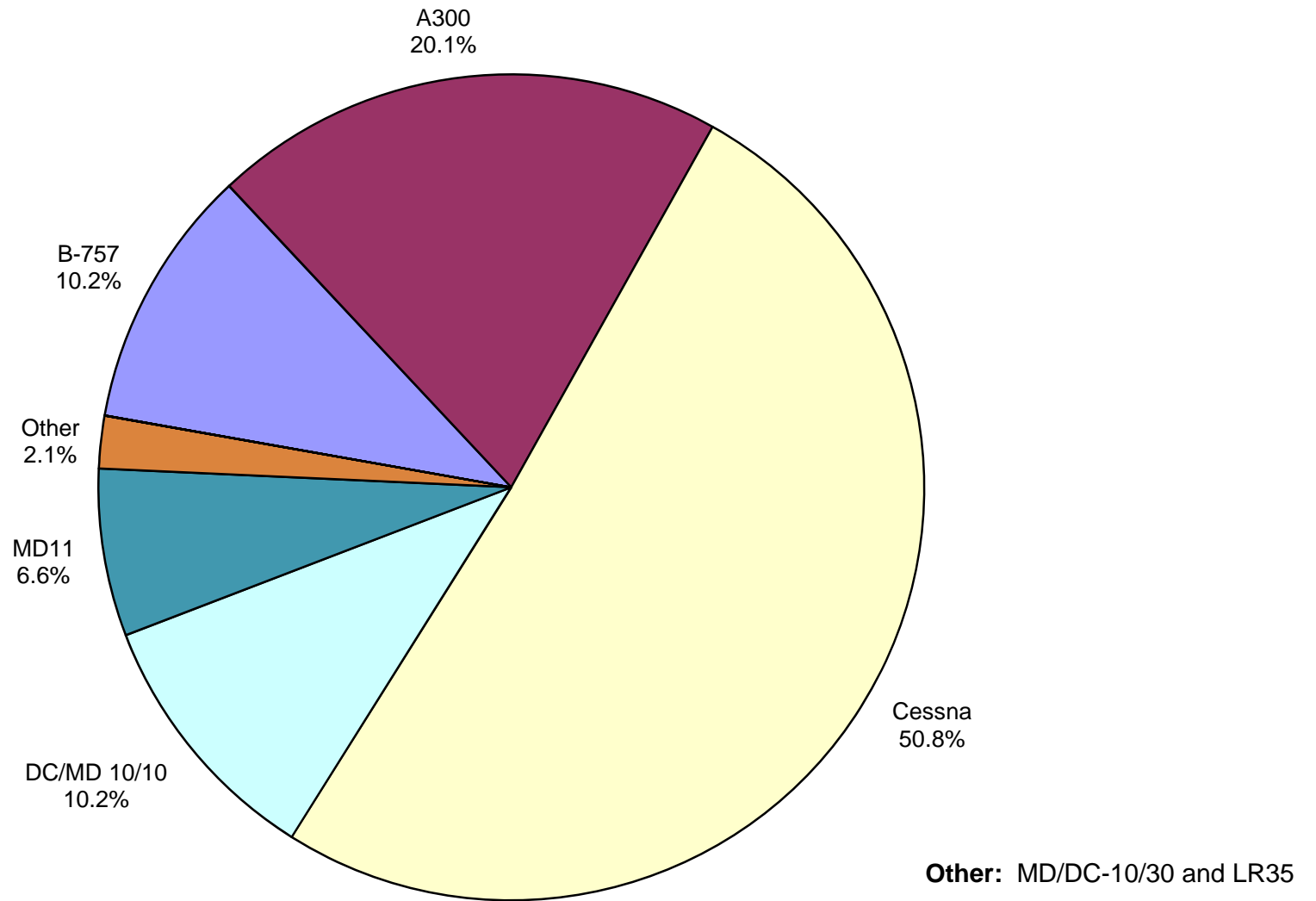


**AUS Scheduled Passenger Aircraft Fleet Mix
April 2018**



Other: B-747-400, B-757, B-787-900, EMB, MD-82 and MD-88

AUS Scheduled Cargo Aircraft Fleet Mix April 2018



Austin-Bergstrom International Airport

PAX Detail Report - April, 2018

Company	04/2018	04/2017	Period		YTD 2018	YTD 2017	YTD		2018 Share	2017 Share	Share Diff
			Difference	Change			Difference	Change			
Aerovias de Mexico S.A. de C.V.	3,473	3,189	284	8.9	13,561	11,921	1,640	13.8	0.3	0.3	0.0
Air Canada	3,835	3,808	27	0.7	14,266	13,212	1,054	8.0	0.3	0.3	0.0
Alaska Airlines	46,289	20,683	25,606	123.8	166,710	76,337	90,373	118.4	3.6	1.9	1.7
Allegiant Air	28,168	21,349	6,819	31.9	100,139	72,921	27,218	37.3	2.1	1.8	0.4
American Airlines	229,484	206,981	22,503	10.9	862,680	801,871	60,809	7.6	18.4	19.6	-1.2
British Airways	13,842	11,130	2,712	24.4	45,213	40,702	4,511	11.1	1.0	1.0	0.0
Concesionaria Vuela Compañía de Aviación, S.A.P.I. de C.V.	1,236	1,163	73	6.3	4,480	6,020	-1,540	-25.6	0.1	0.1	-0.1
Delta Air Lines	179,468	142,459	37,009	26.0	625,014	504,485	120,529	23.9	13.3	12.3	1.0
Frontier Airlines	95,447	32,955	62,492	189.6	223,127	102,966	120,161	116.7	4.8	2.5	2.2
Iberia Airlines	0	245	-245	-100.0	0	245	-245	-100.0	0.0	0.0	0.0
JetBlue Airways	48,247	45,720	2,527	5.5	194,772	191,831	2,941	1.5	4.2	4.7	-0.5
Miami Air International	0	0	0	0.0	309	0	309	0.0	0.0	0.0	0.0
Norwegian Air UK LTD	6,648	0	6,648	0.0	8,367	0	8,367	0.0	0.2	0.0	0.2
Scandinavian Airlines	0	0	0	0.0	697	0	697	0.0	0.0	0.0	0.0
Southwest Airlines	468,540	421,208	47,332	11.2	1,706,105	1,546,119	159,986	10.3	36.4	37.8	-1.4
Sun Country Airlines	367	364	3	0.8	1,647	2,034	-387	-19.0	0.0	0.0	0.0
Swift Air	0	290	-290	-100.0	559	426	133	31.2	0.0	0.0	0.0
Texas Sky	0	137	-137	-100.0	0	604	-604	-100.0	0.0	0.0	0.0
United Airlines	199,182	199,354	-172	-0.1	699,977	663,442	36,535	5.5	14.9	16.2	-1.3
VIA Airlines	712	0	712	0.0	3,872	0	3,872	0.0	0.1	0.0	0.1
Virgin America	0	13,590	-13,590	-100.0	11,117	52,552	-41,435	-78.8	0.2	1.3	-1.0
Xtra Airways/Casino Express	0	0	0	0.0	0	136	-136	-100.0	0.0	0.0	0.0
Report Totals	1,324,938	1,124,625	200,313	17.8%	4,682,612	4,087,824	594,788	14.6%			

Statistics Included in Report:

Domestic Passengers:	Enplaned Revenue, Deplaned Revenue, Enplaned Non-Revenue, Deplaned Non-Revenue
International Passengers:	Enplaned Revenue, Deplaned Revenue, Enplaned Non-Revenue, Deplaned Non-Revenue
International Pre-Cleared Passengers:	Enplaned Revenue, Deplaned Revenue, Enplaned Non-Revenue, Deplaned Non-Revenue
South Terminal Domestic Passengers:	Enplaned Revenue, Deplaned Revenue, Enplaned Non-Revenue, Deplaned Non-Revenue

Austin-Bergstrom International Airport

Summary Landing Report

Landing Type: Total

Month	2018		2017		2016		% Change 2018 - 2017		% Change 2017 - 2016	
	Count	Weight	Count	Weight	Count	Weight	Count	Weight	Count	Weight
January	5,086	688,923,110	4,768	612,688,871	4,622	560,718,408	6.67%	12.44%	3.16%	9.27%
February	4,706	637,500,756	4,357	552,711,639	4,387	527,452,920	8.01%	15.34%	-0.68%	4.79%
March	5,643	760,648,260	5,307	685,661,659	5,151	639,655,137	6.33%	10.94%	3.03%	7.19%
April	5,797	793,367,736	5,179	689,402,051	4,892	614,643,711	11.93%	15.08%	5.87%	12.16%
May			5,529	736,484,083	5,096	630,853,941			8.50%	16.74%
June			5,603	752,628,599	5,179	651,537,449			8.19%	15.52%
July			5,698	763,088,836	5,233	663,015,597			8.89%	15.09%
August			5,490	741,110,019	5,181	660,099,361			5.96%	12.27%
September			5,046	679,381,339	4,738	623,397,035			6.50%	8.98%
October			5,448	743,973,610	4,923	649,182,343			10.66%	14.60%
November			5,289	718,179,948	4,775	624,303,554			10.76%	15.04%
December			5,442	737,424,963	4,893	629,611,090			11.22%	17.12%
Totals for Selected Period	21,232	2,880,439,862	19,611	2,540,464,220	19,052	2,342,470,176	8.27%	13.38%	2.93%	8.45%
Yearly Totals	21,232	2,880,439,862	63,156	8,412,735,617	59,070	7,474,470,546			6.92%	12.55%