

**Austin-Bergstrom International Airport
Aviation Activity Report
Calendar Year 2018 vs 2017**

Combined Terminals

	7/2018	7/2017	Percent Change	1/2018 - 7/2018	1/2017 - 7/2017	Percent Change
ABIA						
Total Passenger Activity						
Domestic Enplaned Revenue	687,726	603,794	13.90	4,222,692	3,729,734	13.22
Domestic Deplaned Revenue	688,887	601,796	14.47	4,190,499	3,669,448	14.20
International Enplaned Revenue	25,814	17,506	47.46	121,629	91,287	33.24
International Deplaned Revenue	29,569	18,590	59.06	121,214	90,424	34.05
Domestic Enplaned Non-Revenue	18,634	16,784	11.02	103,602	95,274	8.74
Domestic Deplaned Non-Revenue	17,983	15,736	14.28	99,341	90,724	9.50
International Enplaned Non-Revenue	141	145	-2.76	901	694	29.83
International Deplaned Non-Revenue	131	109	20.18	723	560	29.11
Intl Enplaned Pre-Cleared Revenue	1,812	1,731	4.68	13,121	11,602	13.09
Intl Deplaned Pre-Cleared Revenue	2,381	1,946	22.35	13,649	11,957	14.15
Intl Enplaned Pre-Cleared Non-Revenue	29	18	61.11	221	163	35.58
Intl Deplaned Pre-Cleared Non-Revenue	54	28	92.86	245	172	42.44
South Terminal Domestic Enplaned Revenue	19,534	16,051	21.70	104,424	51,951	101.00
South Terminal Domestic Deplaned Revenue	18,902	15,915	18.77	105,339	50,995	106.57
South Terminal Domestic Enplaned Non-Revenue	17	19	-10.53	32	31	3.23
South Terminal Domestic Deplaned Non-Revenue	20	6	233.33	48	10	380.00
ABIA Passenger Totals	1,511,634	1,310,174	15.38	9,097,680	7,895,026	15.23
<i>ABIA Enplaned Passenger Totals</i>	<i>753,707</i>	<i>656,048</i>	<i>14.89</i>	<i>4,566,622</i>	<i>3,980,736</i>	<i>14.72</i>
<i>ABIA Deplaned Passenger Totals</i>	<i>757,927</i>	<i>654,126</i>	<i>15.87</i>	<i>4,531,058</i>	<i>3,914,290</i>	<i>15.76</i>
<i>ABIA Domestic Passenger Totals</i>	<i>1,451,703</i>	<i>1,270,101</i>	<i>14.30</i>	<i>8,825,977</i>	<i>7,688,167</i>	<i>14.80</i>
<i>ABIA International Passenger Totals</i>	<i>59,931</i>	<i>40,073</i>	<i>49.55</i>	<i>271,703</i>	<i>206,859</i>	<i>31.35</i>

CURRENT PASSENGER RECORD = 1,511,634 RECORD SET = JULY 2018

Total Aircraft Operations

Air Carrier	12,335	11,144	10.69	77,456	71,192	8.80
Commuter & Air Taxi	1,216	1,027	18.40	9,938	8,665	14.69
Military	1,011	701	44.22	6,140	5,602	9.60
General Aviation						
Itinerant	3,864	3,789	1.98	27,588	29,141	-5.33
Local	166	364	-54.40	931	1,595	-41.63
Total G.A.	4,030	4,153	-2.96	28,519	30,736	-7.21
Total Operations	18,592	17,025	9.20	122,053	116,195	5.04

**Austin-Bergstrom International Airport
Aviation Activity Report
Calendar Year 2018 vs 2017**

By Terminal

	7/2018	7/2017	Percent Change	1/2018 - 7/2018	1/2017 - 7/2017	Percent Change
<u>Barbara Jordan Terminal (BJT)</u>						
Passenger Activity						
Domestic Enplaned Revenue	687,726	603,794	13.90	4,222,692	3,729,734	13.22
Domestic Deplaned Revenue	688,887	601,796	14.47	4,190,499	3,669,448	14.20
International Enplaned Revenue	25,814	17,506	47.46	121,629	91,287	33.24
International Deplaned Revenue	29,569	18,590	59.06	121,214	90,424	34.05
Domestic Enplaned Non-Revenue	18,634	16,784	11.02	103,602	95,274	8.74
Domestic Deplaned Non-Revenue	17,983	15,736	14.28	99,341	90,724	9.50
International Enplaned Non-Revenue	141	145	-2.76	901	694	29.83
International Deplaned Non-Revenue	131	109	20.18	723	560	29.11
Intl Enplaned Pre-Cleared Revenue	1,812	1,731	4.68	13,121	11,602	13.09
Intl Deplaned Pre-Cleared Revenue	2,381	1,946	22.35	13,649	11,957	14.15
Intl Enplaned Pre-Cleared Non-Revenue	29	18	61.11	221	163	35.58
Intl Deplaned Pre-Cleared Non-Revenue	54	28	92.86	245	172	42.44
Barbara Jordan Terminal Passenger Totals	1,473,161	1,278,183	15.25	8,887,837	7,792,039	14.06
<i>BJT Enplaned Passenger Totals</i>	<i>734,156</i>	<i>639,978</i>	<i>14.72</i>	<i>4,462,166</i>	<i>3,928,754</i>	<i>13.58</i>
<i>BJT Deplaned Passenger Totals</i>	<i>739,005</i>	<i>638,205</i>	<i>15.79</i>	<i>4,425,671</i>	<i>3,863,285</i>	<i>14.56</i>
<i>BJT Domestic Passenger Totals</i>	<i>1,413,230</i>	<i>1,238,110</i>	<i>14.14</i>	<i>8,616,134</i>	<i>7,585,180</i>	<i>13.59</i>
<i>BJT International Passenger Totals</i>	<i>59,931</i>	<i>40,073</i>	<i>49.55</i>	<i>271,703</i>	<i>206,859</i>	<i>31.35</i>
<u>South Terminal (ST)</u>						
Passenger Activity						
South Terminal Domestic Enplaned Revenue	19,534	16,051	21.70	104,424	51,951	101.00
South Terminal Domestic Deplaned Revenue	18,902	15,915	18.77	105,339	50,995	106.57
South Terminal Domestic Enplaned Non-Revenue	17	19	-10.53	32	31	3.23
South Terminal Domestic Deplaned Non-Revenue	20	6	233.33	48	10	380.00
South Terminal Passenger Totals	38,473	31,991	20.26	209,843	102,987	103.76
<i>ST Enplaned Passenger Totals</i>	<i>19,551</i>	<i>16,070</i>	<i>21.66</i>	<i>104,456</i>	<i>51,982</i>	<i>100.95</i>
<i>ST Deplaned Passenger Totals</i>	<i>18,922</i>	<i>15,921</i>	<i>18.85</i>	<i>105,387</i>	<i>51,005</i>	<i>106.62</i>

**Austin-Bergstrom International Airport
Aviation Activity Report
Calendar Year 2018 vs 2017**

	7/2018	7/2017	Percent Change	1/2018 - 7/2018	1/2017 - 7/2017	Percent Change
<u>Total Cargo Activity</u>						
Mail						
Domestic Enplaned Mail	196,364	192,540	1.99	1,369,388	1,357,476	0.88
Domestic Deplaned Mail	449,402	426,948	5.26	2,916,543	2,535,986	15.01
International Enplaned Mail	0	0	0.00	0	0	0.00
International Deplaned Mail	0	0	0.00	0	2	-100.00
South Terminal-Intl Enplaned Mail	0	0	0.00	0	0	0.00
South Terminal-Intl Deplaned Mail	0	0	0.00	0	0	0.00
Mail Totals	645,766	619,488	4.24	4,285,931	3,893,464	10.08
Cargo						
Domestic Enplaned Cargo	4,591,035	4,876,493	-5.85	34,169,475	34,622,113	-1.31
Domestic Deplaned Cargo	6,424,122	6,732,747	-4.58	47,316,325	48,128,420	-1.69
International Enplaned Cargo	550,459	396,054	38.99	4,585,503	4,781,814	-4.11
International Deplaned Cargo	148,608	115,557	28.60	1,939,828	2,554,688	-24.07
South Terminal-Intl Enplaned Cargo	0	0	0.00	0	0	0.00
South Terminal-Intl Deplaned Cargo	0	0	0.00	0	0	0.00
Cargo Totals	11,714,224	12,120,851	-3.35	88,011,131	90,087,035	-2.30
Belly Freight						
Domestic Enplaned Belly Freight	303,562	283,556	7.06	2,094,543	1,893,159	10.64
Domestic Deplaned Belly Freight	487,066	488,524	-0.30	3,364,399	3,546,825	-5.14
International Enplaned Belly Freight	161,724	340,369	-52.49	1,868,264	1,616,154	15.60
International Deplaned Belly Freight	611,843	756,384	-19.11	4,043,560	4,909,895	-17.64
South Terminal-Intl Enplaned Belly Freight	0	0	0.00	0	0	0.00
South Terminal-Intl Deplaned Belly Freight	0	0	0.00	0	0	0.00
Belly Freight Totals	1,564,195	1,868,833	-16.30	11,370,766	11,966,033	-4.97
Cargo Totals (Mail, Cargo, Belly Freight)	13,924,185	14,609,172	-4.69	103,667,828	105,946,532	-2.15
<i>Enplaned Cargo Totals</i>	<i>5,803,144</i>	<i>6,089,012</i>	<i>-4.69</i>	<i>44,087,173</i>	<i>44,270,716</i>	<i>-0.41</i>
<i>Deplaned Cargo Totals</i>	<i>8,121,041</i>	<i>8,520,160</i>	<i>-4.68</i>	<i>59,580,655</i>	<i>61,675,816</i>	<i>-3.40</i>
<i>Domestic Cargo Totals</i>	<i>12,451,551</i>	<i>13,000,808</i>	<i>-4.22</i>	<i>91,230,673</i>	<i>92,083,979</i>	<i>-0.93</i>
<i>International Cargo Totals</i>	<i>1,472,634</i>	<i>1,608,364</i>	<i>-8.44</i>	<i>12,437,155</i>	<i>13,862,553</i>	<i>-10.28</i>

CURRENT CARGO RECORD = 40,215,518

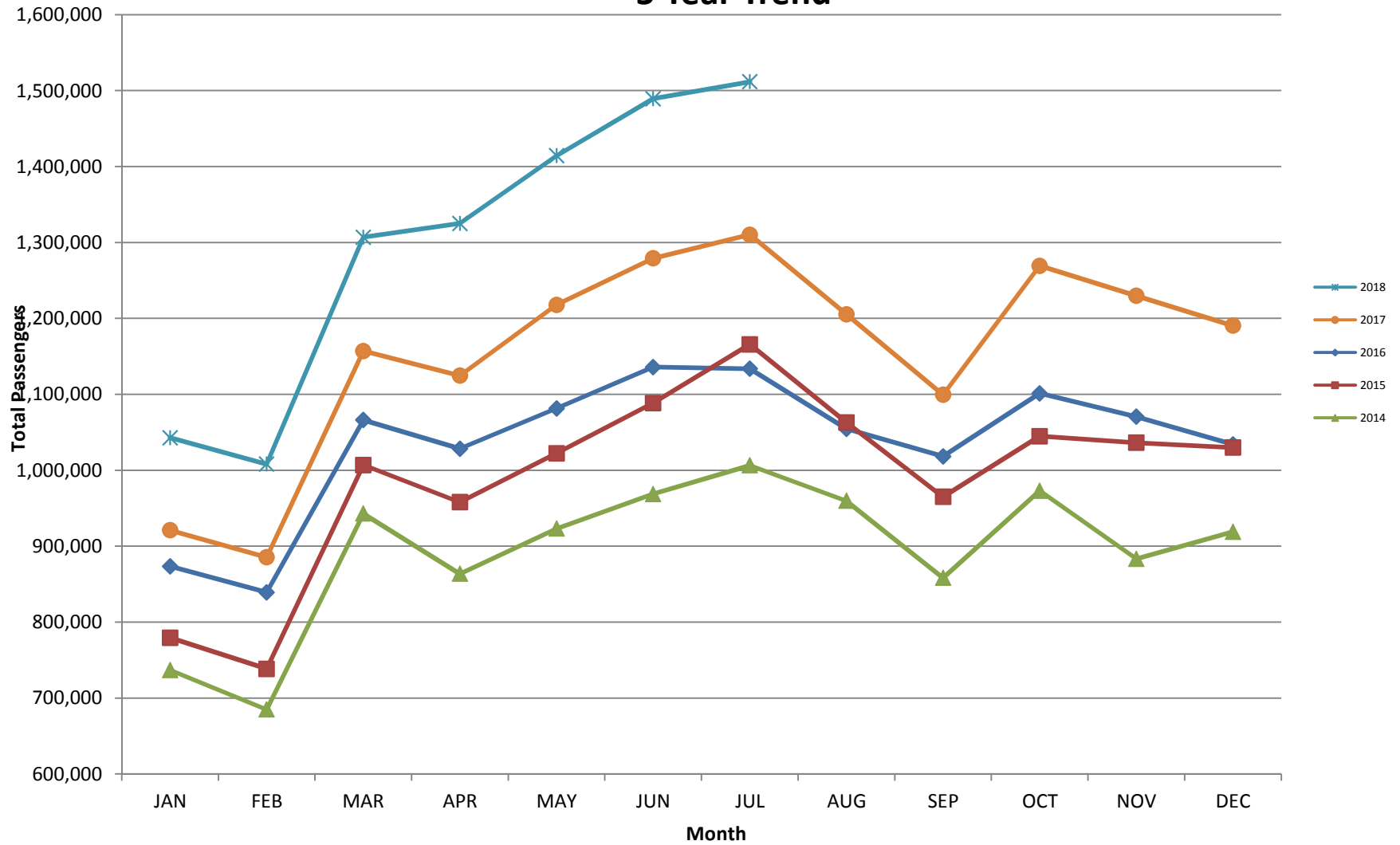
RECORD SET = MARCH 2001

AUS – Airline Codes
July 2018

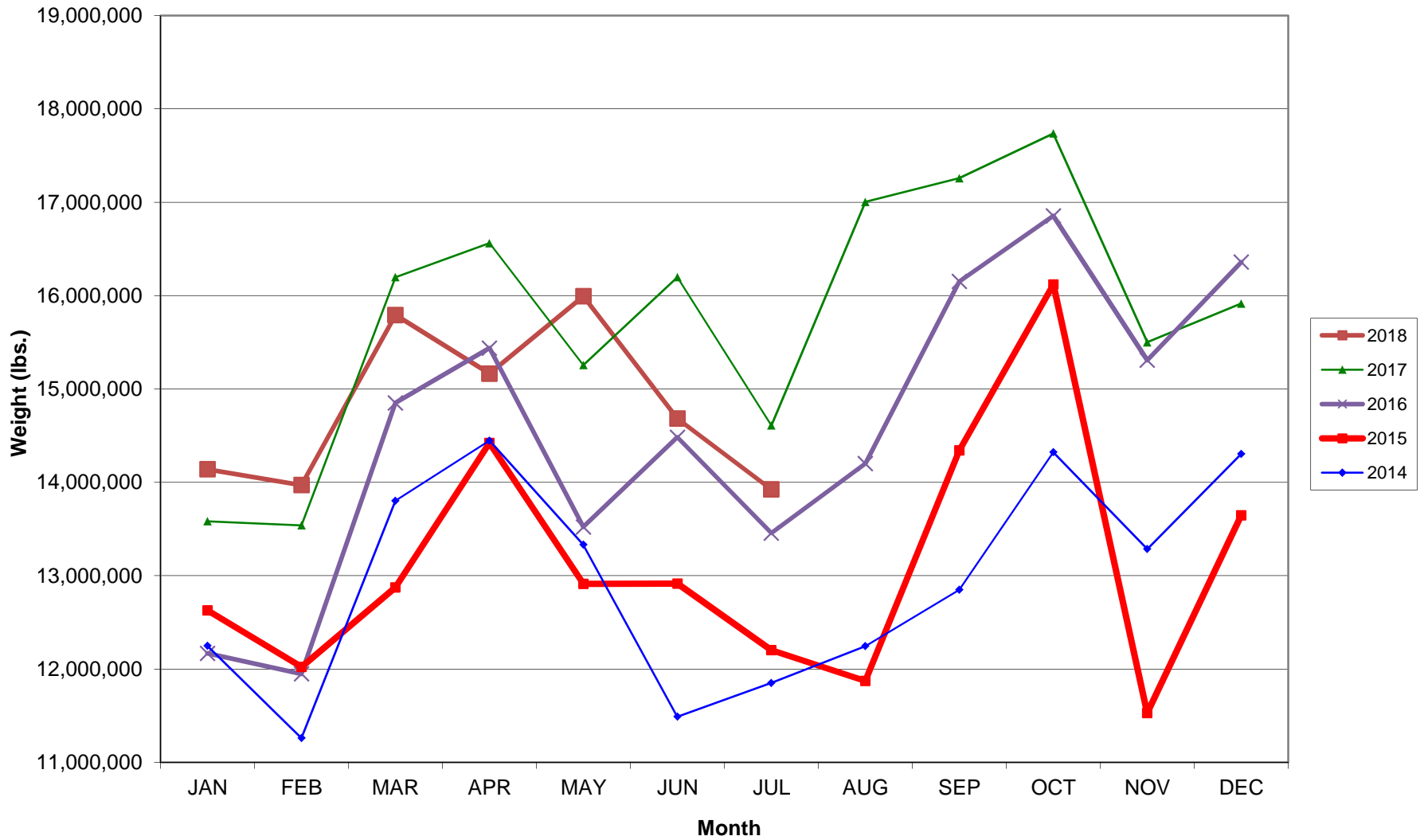
<u>Code</u>	<u>Carrier</u>
AM	Aerovias de Mexico S.A. de C.V. dba AeroMexico Airlines
AC	Air Canada
AS	Alaska Airlines,Inc. (Includes Virgin America. Merger effective 2/1/2018)
G4	Allegiant Air, LLC
AA	American Airlines, Inc.
BA	British Airways Plc
Y4	Concesionaria Vuela Compañía de Aviación, S.A.P.I. de C.V dba Volaris
DE	Condor Airlines
DL	Delta Airlines
F9	Frontier Airlines
4O	Interjet Airlines
B6	JetBlue Airways Corp.
DY	Norwegian Air UK, Ltd.
WN	Southwest Airlines
SY	Sun Country Airlines/ MN Airlines, LLC
WQ	Swift Air (Casino Charters)
UA	United Airlines, Inc.
WQ	Vacation Express handled by Swift Air
VC	VIA Airlines

AUSTIN PASSENGER TRAFFIC

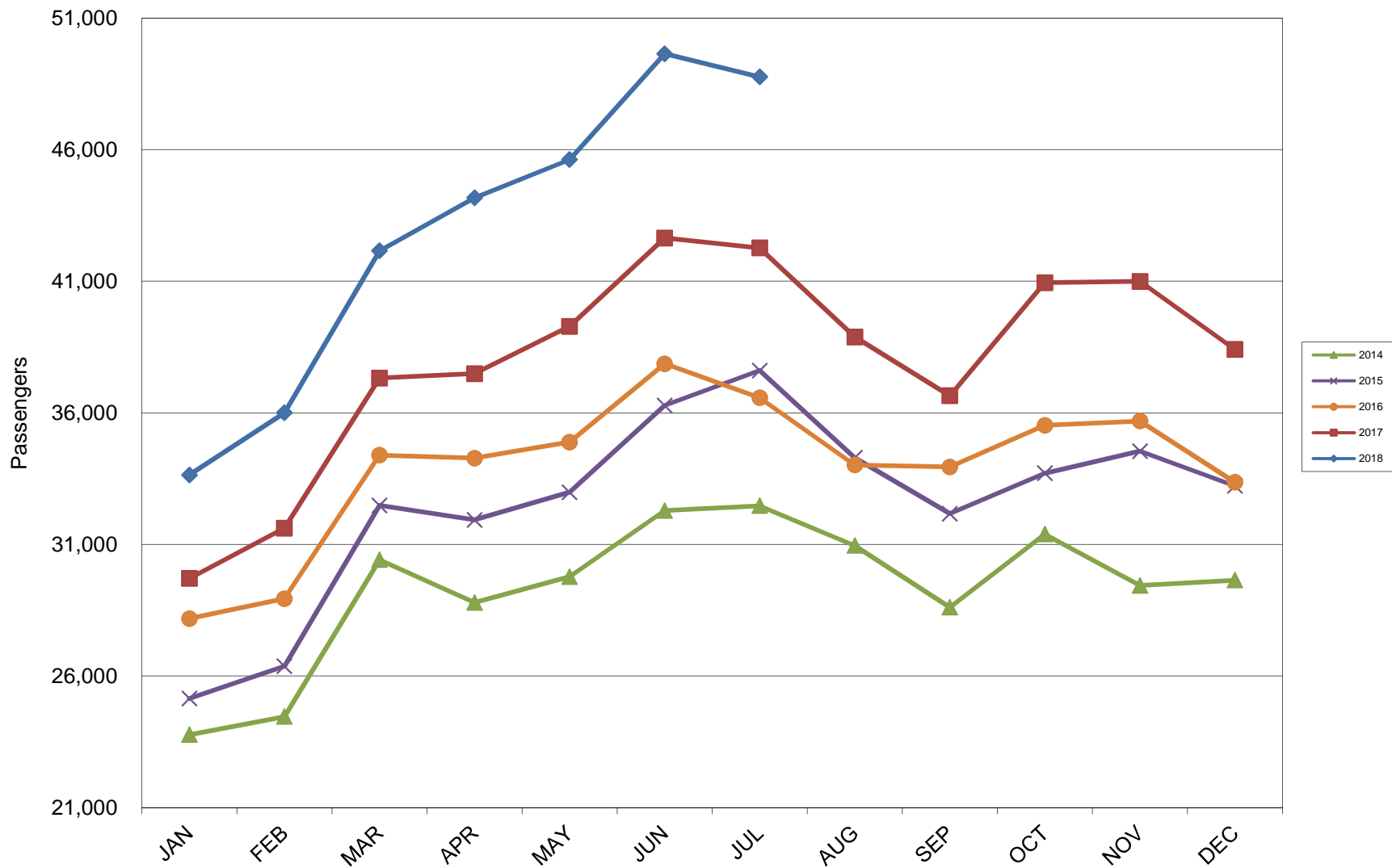
5 Year Trend



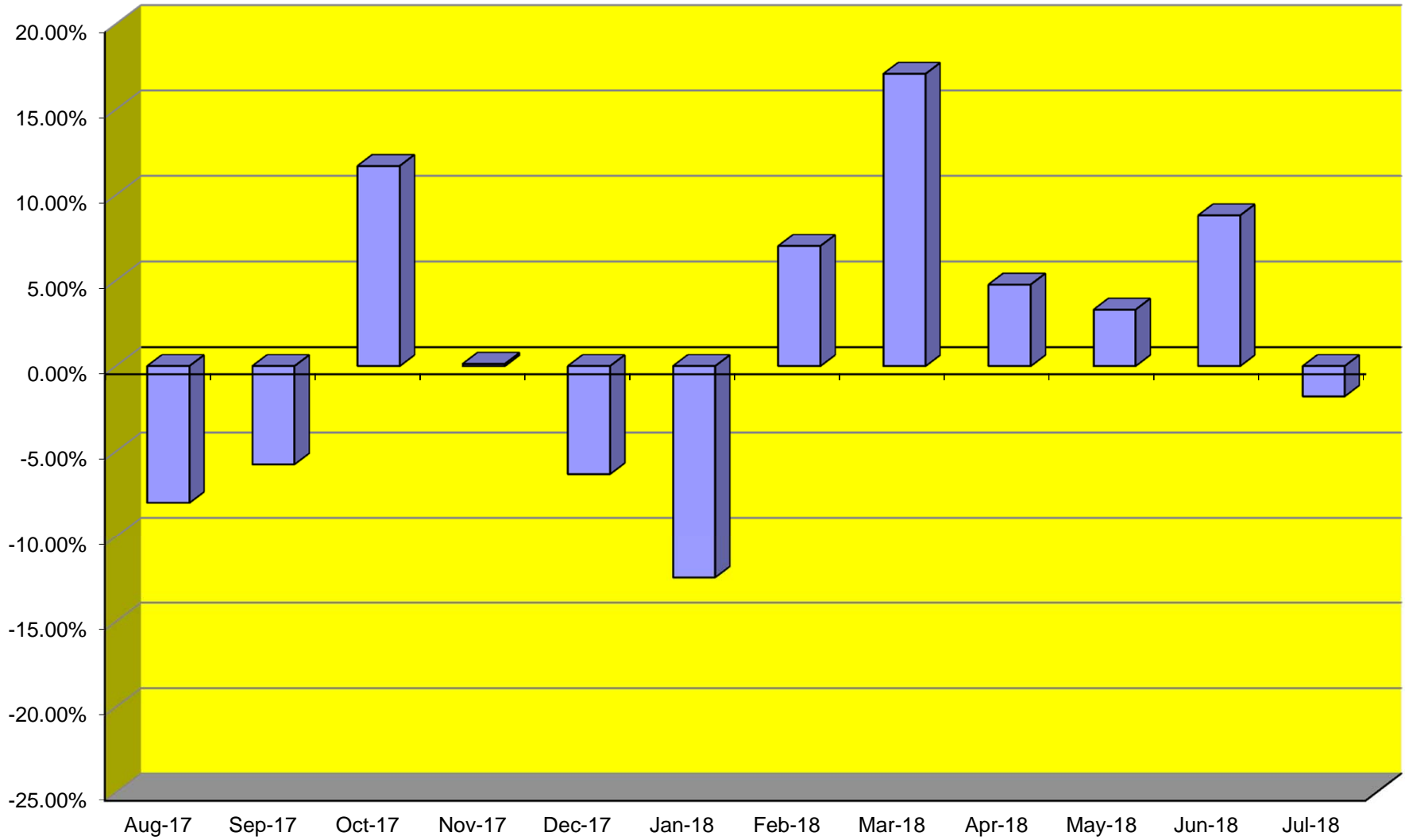
TOTAL CARGO POUNDAGE - AUSTIN, TEXAS



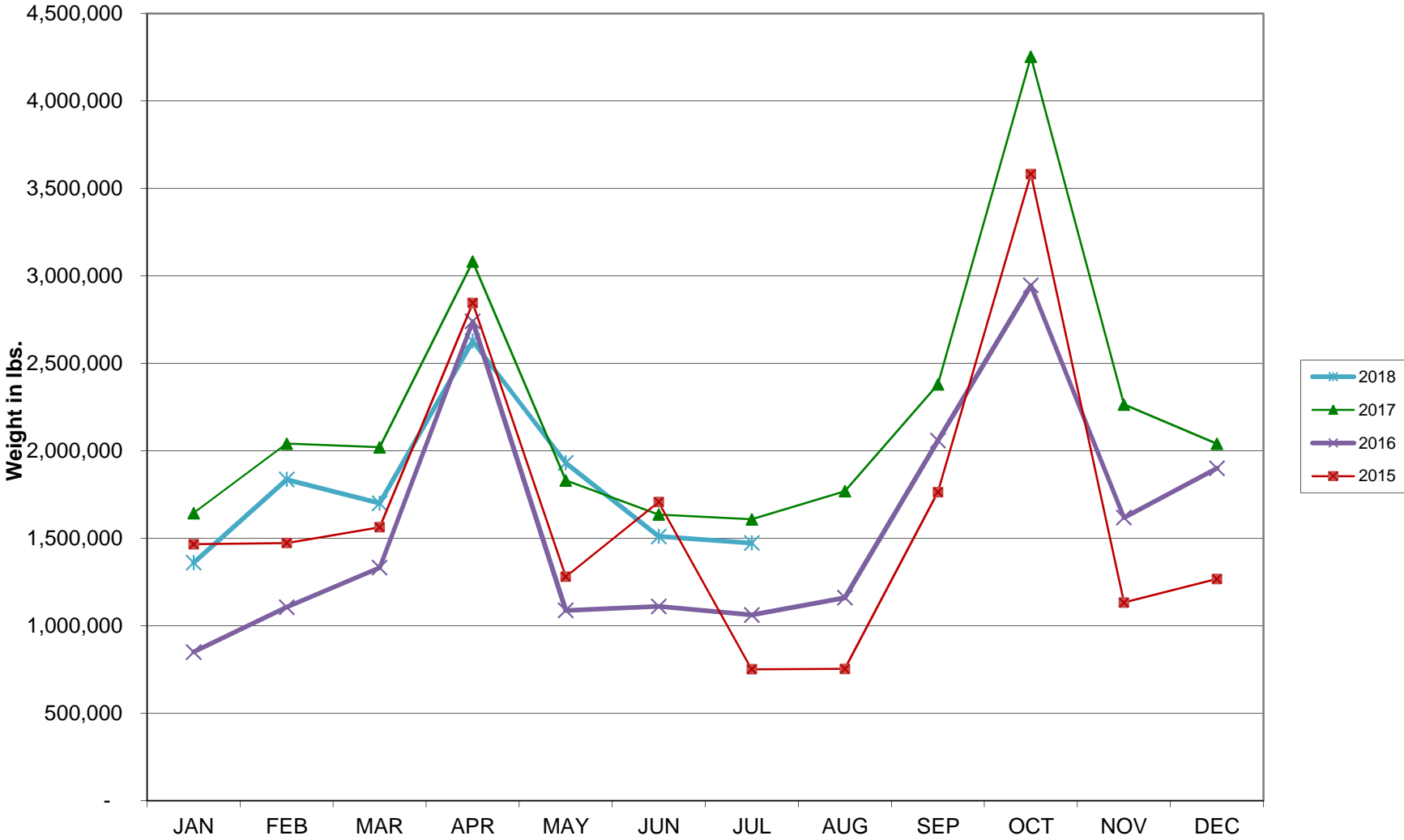
Average Daily Passengers



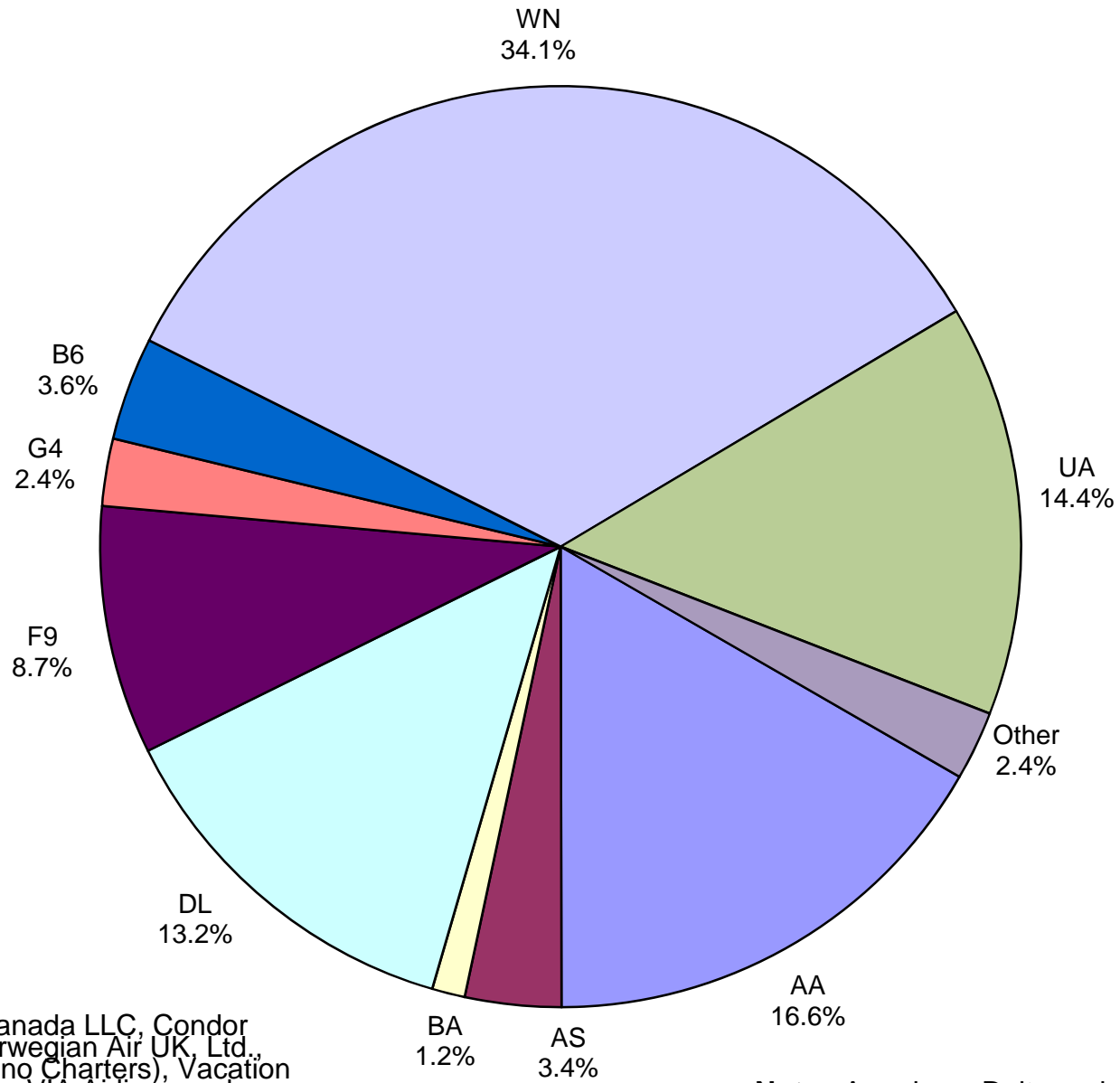
Monthly % Change in Average Daily Passengers



HISTORY OF INTERNATIONAL AIR CARGO



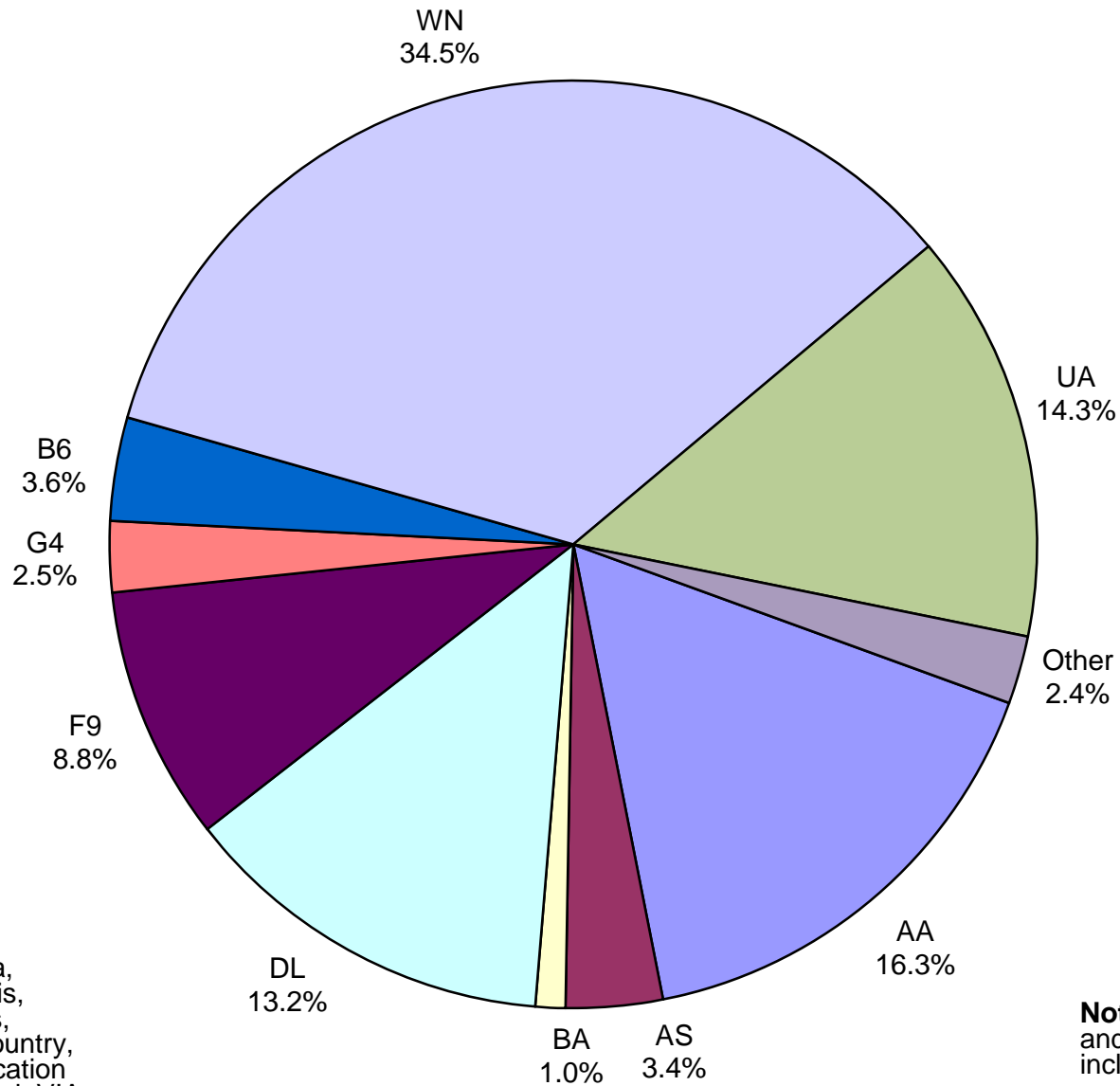
Total Passengers July 2018



Other: Aeromexico, Air Canada LLC, Condor Airlines, Interjet Airlines, Norwegian Air UK, Ltd., Sun Country, Swift Air (Casino Charters), Vacation Express handled by Swift Air, VIA Airlines and Concesionaria Vuela dba Volaris

Note: American, Delta and United Airlines percentages include Affiliates.

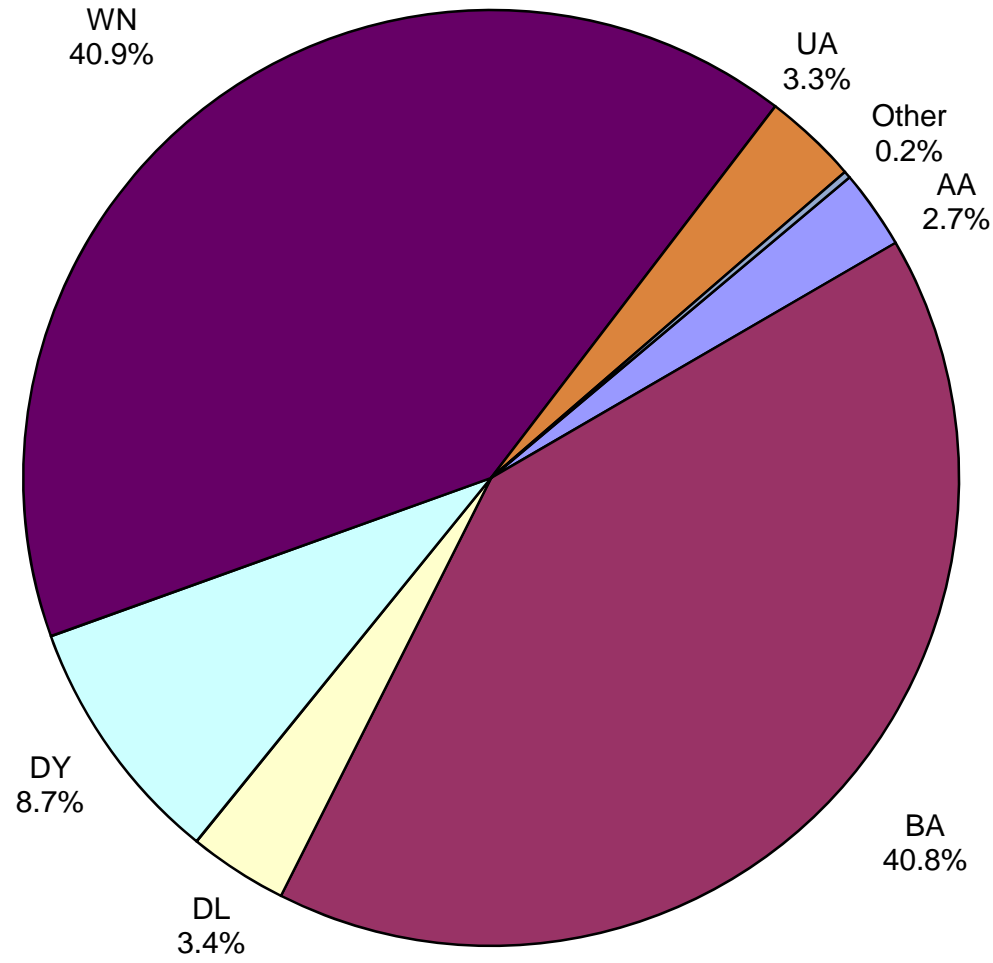
**All Passenger Carriers
Enplaned Revenue Passengers
July 2018**



Other: Aeromexico, Air Canada, Concesionaria Vuela dba Volaris, Condor Airlines, Interjet Airlines, Norwegian Air UK Ltd., Sun Country, Swift Air (Casino Charters), Vacation Express handled by Swift Air and VIA Airlines

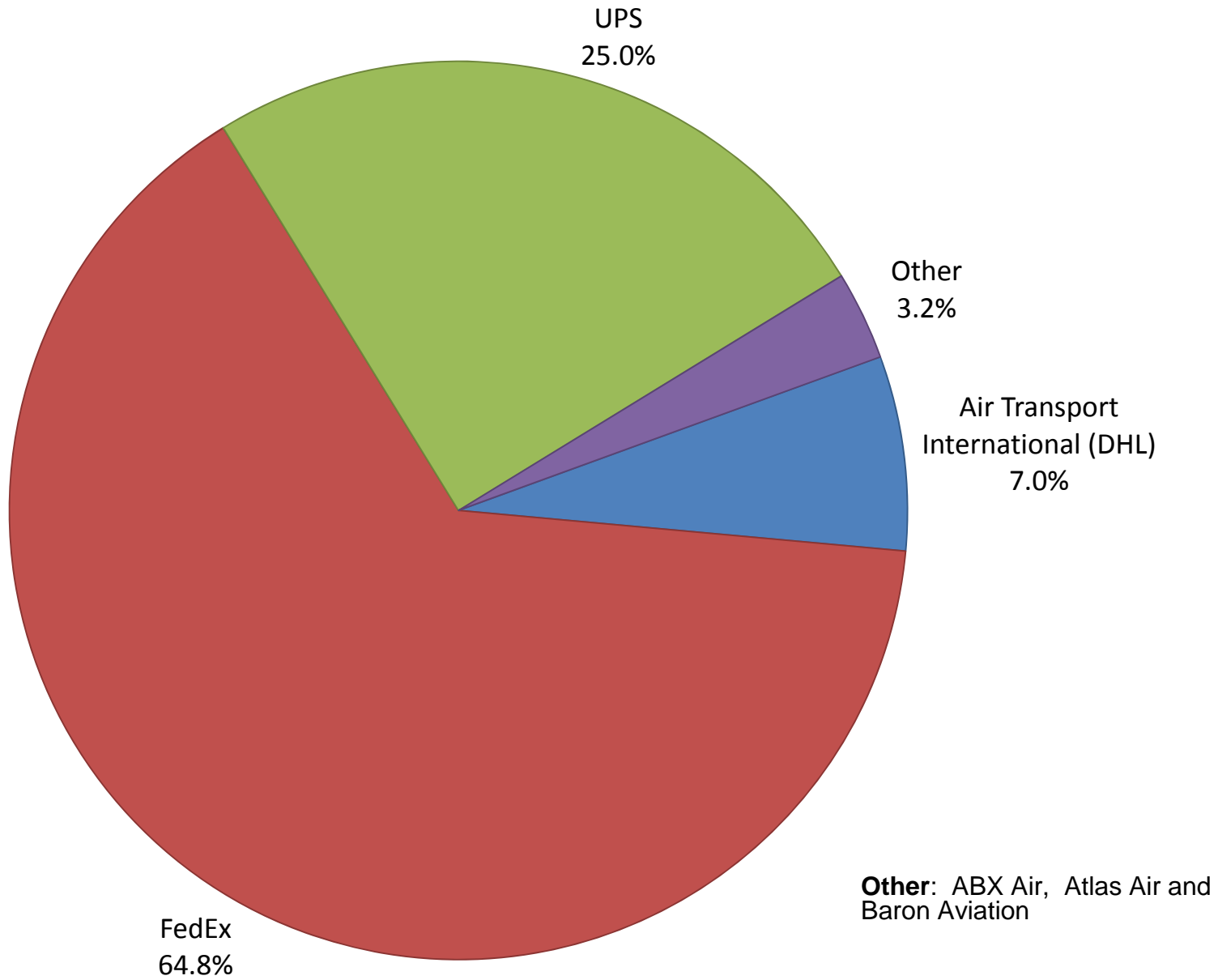
Note: American/US Airways, Delta and United Airlines percentages include Affiliates.

**AUS Belly Freight Market Shares
July 2018**

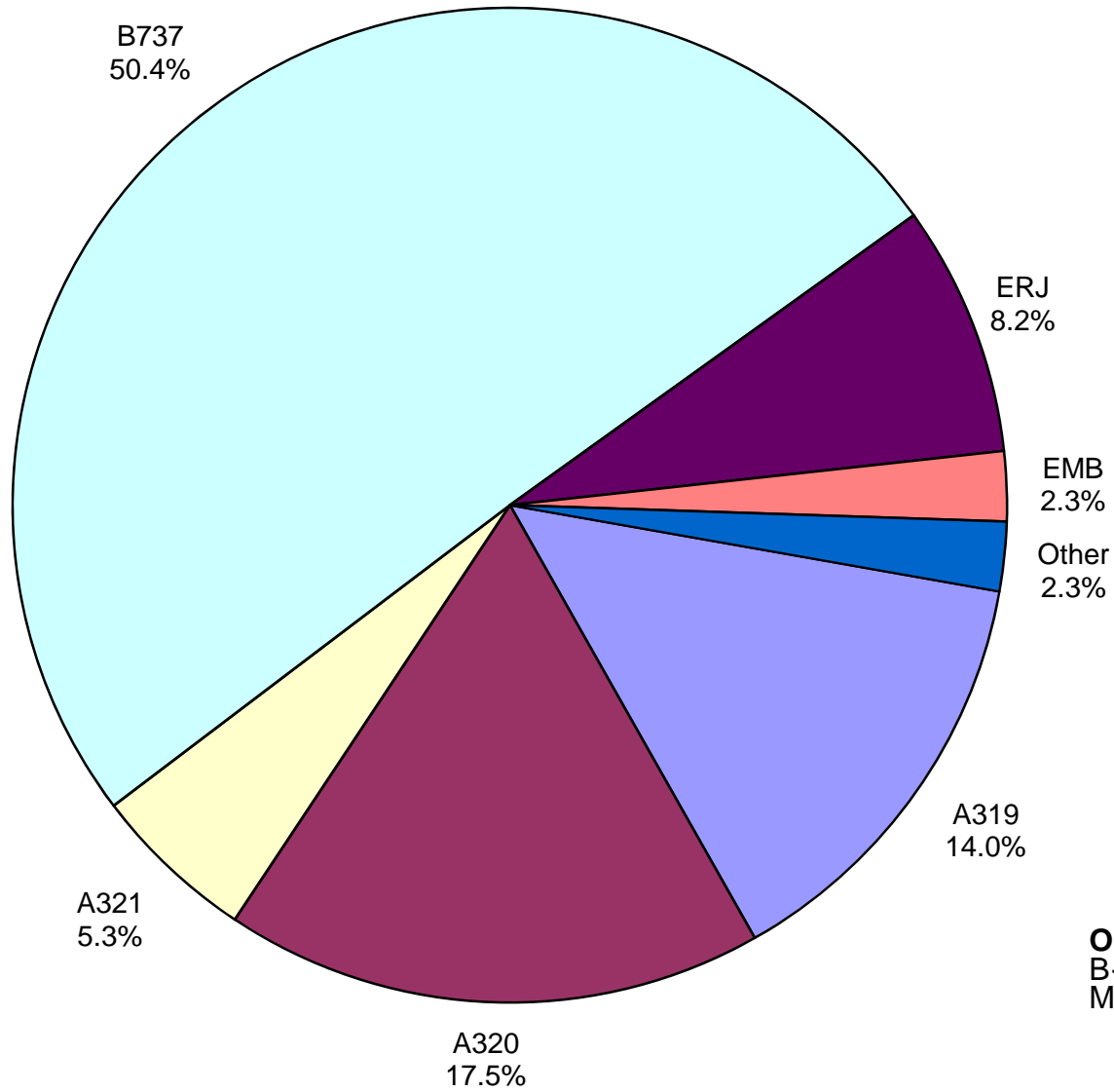


Other = Alaska Airlines

Air Cargo Market Share July 2018

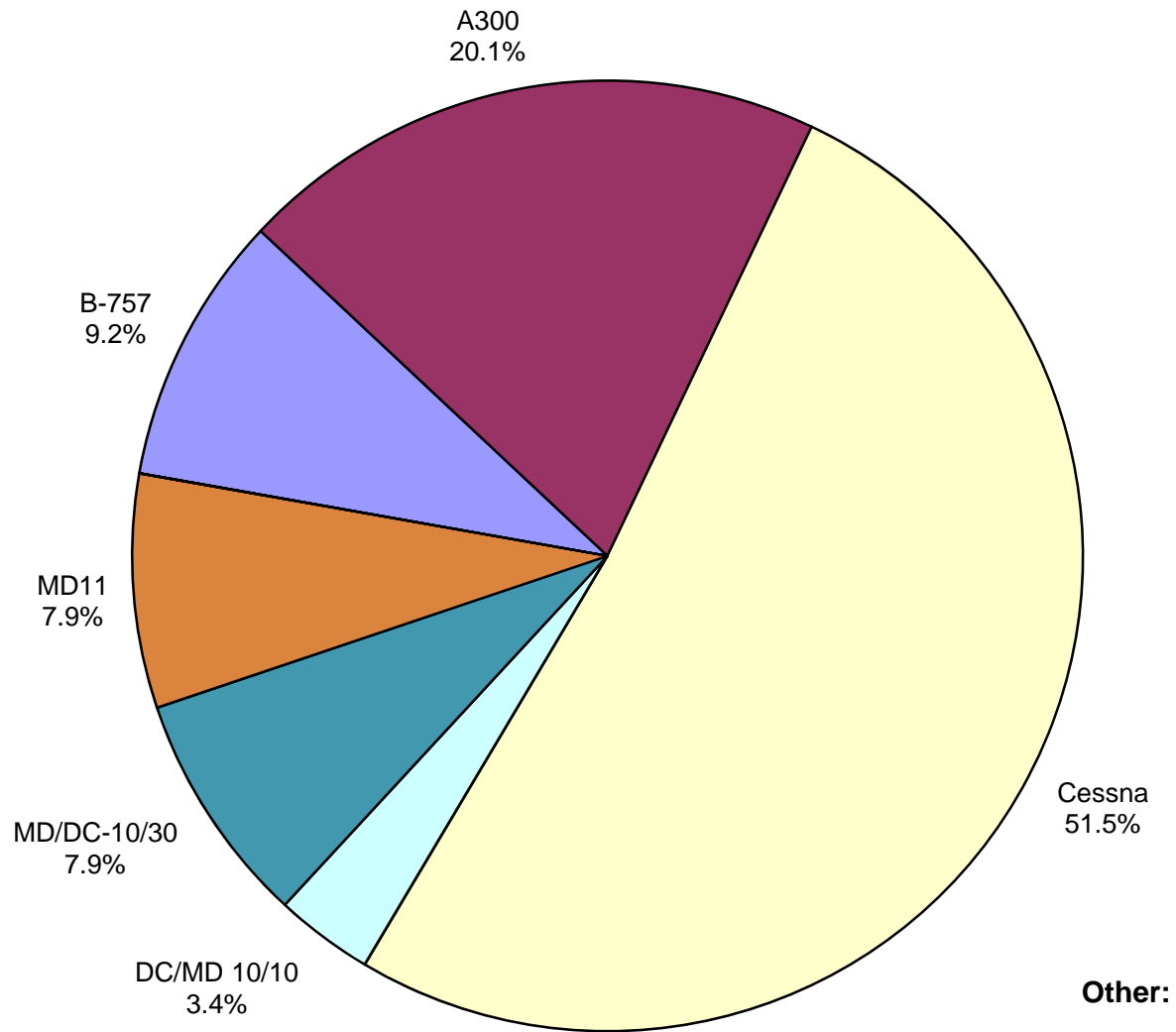


**AUS Scheduled Passenger Aircraft Fleet Mix
July 2018**



Other: B-747-400, B-767
B-787-900, CRJ, MD-82,
MD-83, MD-88 and MD-90

**AUS Scheduled Cargo Aircraft Fleet Mix
July 2018**



Austin-Bergstrom International Airport

PAX Detail Report - July, 2018

Company	07/2018	07/2017	Period		YTD 2018	YTD 2017	YTD		2018 Share	2017 Share	Share Diff
			Difference	Change			Difference	Change			
Aerovias de Mexico S.A. de C.V.	5,014	3,719	1,295	34.8	25,703	22,037	3,666	16.6	0.3	0.3	0.0
Air Canada	4,276	3,723	553	14.9	27,236	23,894	3,342	14.0	0.3	0.3	0.0
Alaska Airlines	50,973	24,215	26,758	110.5	317,501	144,479	173,022	119.8	3.5	1.8	1.7
Allegiant Air	35,765	31,202	4,563	14.6	196,502	160,320	36,182	22.6	2.2	2.0	0.1
American Airlines	251,515	241,193	10,322	4.3	1,604,379	1,491,914	112,465	7.5	17.6	18.9	-1.3
British Airways	17,480	11,641	5,839	50.2	97,585	74,865	22,720	30.3	1.1	0.9	0.1
Concesionaria Vuela Compañía de Aviación, S.A.P.I. de C.V.	2,144	1,747	397	22.7	9,356	9,583	-227	-2.4	0.1	0.1	0.0
Condor Airlines	5,707	4,286	1,421	33.2	9,928	11,809	-1,881	-15.9	0.1	0.1	0.0
Delta Air Lines	199,339	170,556	28,783	16.9	1,212,943	990,078	222,865	22.5	13.3	12.5	0.8
Frontier Airlines	131,818	56,761	75,057	132.2	615,346	263,736	351,610	133.3	6.8	3.3	3.4
Iberia Airlines	0	0	0	0.0	0	245	-245	-100.0	0.0	0.0	0.0
Interjet Airlines	41	0	41	0.0	41	0	41	0.0	0.0	0.0	0.0
JetBlue Airways	54,785	57,822	-3,037	-5.3	349,727	356,265	-6,538	-1.8	3.8	4.5	-0.7
Miami Air International	0	0	0	0.0	309	0	309	0.0	0.0	0.0	0.0
Norwegian Air UK LTD	7,683	0	7,683	0.0	32,506	0	32,506	0.0	0.4	0.0	0.4
Scandinavian Airlines	0	0	0	0.0	697	0	697	0.0	0.0	0.0	0.0
Southwest Airlines	514,810	475,899	38,911	8.2	3,217,646	2,950,871	266,775	9.0	35.4	37.4	-2.0
Sun Country Airlines	7,452	402	7,050	1,753.7	14,119	3,011	11,108	368.9	0.2	0.0	0.1
Swift Air	297	0	297	0.0	1,142	706	436	61.8	0.0	0.0	0.0
Texas Sky	0	0	0	0.0	0	604	-604	-100.0	0.0	0.0	0.0
United Airlines	218,435	213,557	4,878	2.3	1,340,467	1,296,381	44,086	3.4	14.7	16.4	-1.7
Vacation Express	1,392	0	1,392	0.0	2,352	0	2,352	0.0	0.0	0.0	0.0
VIA Airlines	2,708	789	1,919	243.2	11,078	1,583	9,495	599.8	0.1	0.0	0.1
Virgin America	0	12,662	-12,662	-100.0	11,117	92,509	-81,392	-88.0	0.1	1.2	-1.0
Xtra Airways/Casino Express	0	0	0	0.0	0	136	-136	-100.0	0.0	0.0	0.0
Report Totals	1,511,634	1,310,174	201,460	15.4%	9,097,680	7,895,026	1,202,654	15.2%			

Statistics Included in Report:

Domestic Passengers:	Enplaned Revenue, Deplaned Revenue, Enplaned Non-Revenue, Deplaned Non-Revenue
International Passengers:	Enplaned Revenue, Deplaned Revenue, Enplaned Non-Revenue, Deplaned Non-Revenue
International Pre-Cleared Passengers:	Enplaned Revenue, Deplaned Revenue, Enplaned Non-Revenue, Deplaned Non-Revenue
South Terminal Domestic Passengers:	Enplaned Revenue, Deplaned Revenue, Enplaned Non-Revenue, Deplaned Non-Revenue

Austin-Bergstrom International Airport

Summary Landing Report

Landing Type: Total

Month	2018		2017		2016		% Change 2018 - 2017		% Change 2017 - 2016	
	Count	Weight	Count	Weight	Count	Weight	Count	Weight	Count	Weight
January	5,086	688,923,110	4,768	612,688,871	4,622	560,718,408	6.67%	12.44%	3.16%	9.27%
February	4,706	637,500,756	4,357	552,711,639	4,387	527,452,920	8.01%	15.34%	-0.68%	4.79%
March	5,643	760,648,260	5,307	685,661,659	5,151	639,655,137	6.33%	10.94%	3.03%	7.19%
April	5,797	793,367,736	5,179	689,402,051	4,892	614,643,711	11.93%	15.08%	5.87%	12.16%
May	6,117	831,431,763	5,529	736,484,083	5,096	630,853,941	10.63%	12.89%	8.50%	16.74%
June	6,211	852,438,818	5,603	752,628,599	5,179	651,537,449	10.85%	13.26%	8.19%	15.52%
July	6,346	869,502,671	5,698	763,088,836	5,233	663,015,597	11.37%	13.95%	8.89%	15.09%
August			5,490	741,110,019	5,181	660,099,361			5.96%	12.27%
September			5,046	679,381,339	4,738	623,397,035			6.50%	8.98%
October			5,448	743,973,610	4,923	649,182,343			10.66%	14.60%
November			5,289	718,179,948	4,775	624,303,554			10.76%	15.04%
December			5,442	737,424,963	4,893	629,611,090			11.22%	17.12%
Totals for Selected Period	39,906	5,433,813,114	36,441	4,792,665,738	34,560	4,287,877,163	9.51%	13.38%	5.44%	11.77%
Yearly Totals	39,906	5,433,813,114	63,156	8,412,735,617	59,070	7,474,470,546			6.92%	12.55%