

Austin-Bergstrom International Airport

Aviation Activity Report

Calendar Year 2013 vs 2012

	04/2013	04/2012	Percent Change	01/2013 - 04/2013	01/2012 - 04/2012	Percent Change
<u>Passenger Activity</u>						
Domestic Enplaned Revenue	409,339	382,862	6.92	1,480,339	1,419,802	4.26
Domestic Deplaned Revenue	395,414	374,359	5.62	1,489,972	1,427,058	4.41
International Enplaned Revenue	1,322	0	0.00	4,970	0	0.00
International Deplaned Revenue	1,540	0	0.00	5,779	0	0.00
Domestic Enplaned Non-Revenue	9,480	9,459	0.22	38,460	36,540	5.25
Domestic Deplaned Non-Revenue	8,636	8,683	-0.54	34,555	33,366	3.56
International Enplaned Non-Revenue	2	0	0.00	23	0	0.00
International Deplaned Non-Revenue	23	0	0.00	43	0	0.00
South Terminal-Intl Enplaned Revenue	0	0	0.00	0	0	0.00
South Terminal-Intl Deplaned Revenue	0	0	0.00	0	0	0.00
South Terminal-Intl Enplaned Non-Revenue	0	0	0.00	0	0	0.00
South Terminal-Intl Deplaned Non-Revenue	0	0	0.00	0	0	0.00
Passenger Totals	825,756	775,363	6.50	3,054,141	2,916,766	4.71

CURRENT PASSENGER RECORD = 876,806

RECORD SET = MARCH 2013

Aircraft Operations

Air Carrier	8,306	8,072	2.90	32,342	31,365	3.11
Commuter & Air Taxi	1,535	1,411	8.79	5,502	5,213	5.54
Military	515	464	10.99	2,053	1,921	6.87
General Aviation						
Itinerant	4,433	4,560	-2.79	17,045	16,243	4.94
Local	165	134	23.13	836	638	31.03
Total G.A.	4,598	4,694	-2.05	17,881	16,881	5.92
Total Operations	14,954	14,641	2.14	57,778	55,380	4.33

Austin-Bergstrom International Airport

Aviation Activity Report

Calendar Year 2013 vs 2012

	04/2013	04/2012	Percent Change	01/2013 - 04/2013	01/2012 - 04/2012	Percent Change
<u>Cargo Activity</u>						
Mail						
Domestic Enplaned Mail	132,307	58,231	127.21	421,642	283,108	48.93
Domestic Deplaned Mail	195,608	142,416	37.35	718,932	609,892	17.88
International Enplaned Mail	0	0	0.00	0	0	0.00
International Deplaned Mail	0	0	0.00	0	0	0.00
South Terminal-Intl Enplaned Mail	0	0	0.00	0	0	0.00
South Terminal-Intl Deplaned Mail	0	0	0.00	0	0	0.00
Mail Totals	327,915	200,647	63.43	1,140,574	893,000	27.72
Cargo						
Domestic Enplaned Cargo	5,014,015	4,822,391	3.97	20,528,672	20,157,240	1.84
Domestic Deplaned Cargo	6,064,720	5,570,066	8.88	23,586,034	22,618,521	4.28
International Enplaned Cargo	849,841	246,574	244.66	1,981,971	1,549,205	27.93
International Deplaned Cargo	919,290	329,614	178.90	1,832,962	1,335,235	37.28
South Terminal-Intl Enplaned Cargo	0	0	0.00	0	0	0.00
South Terminal-Intl Deplaned Cargo	0	0	0.00	0	0	0.00
Cargo Totals	12,847,866	10,968,645	17.13	47,929,639	45,660,201	4.97
Belly Freight						
Domestic Enplaned Belly Freight	272,192	465,279	-41.50	1,288,726	1,784,825	-27.80
Domestic Deplaned Belly Freight	403,063	453,801	-11.18	1,607,336	1,761,711	-8.76
International Enplaned Belly Freight	0	0	0.00	0	0	0.00
International Deplaned Belly Freight	0	0	0.00	0	0	0.00
South Terminal-Intl Enplaned Belly Frt	0	0	0.00	0	0	0.00
South Terminal-Intl Deplaned Belly Frt	0	0	0.00	0	0	0.00
Belly Freight Totals	675,255	919,080	-26.53	2,896,062	3,546,536	-18.34
Cargo Totals (Mail, Cargo, Belly Freight)	13,851,036	12,088,372	14.58	51,966,275	50,099,737	3.73

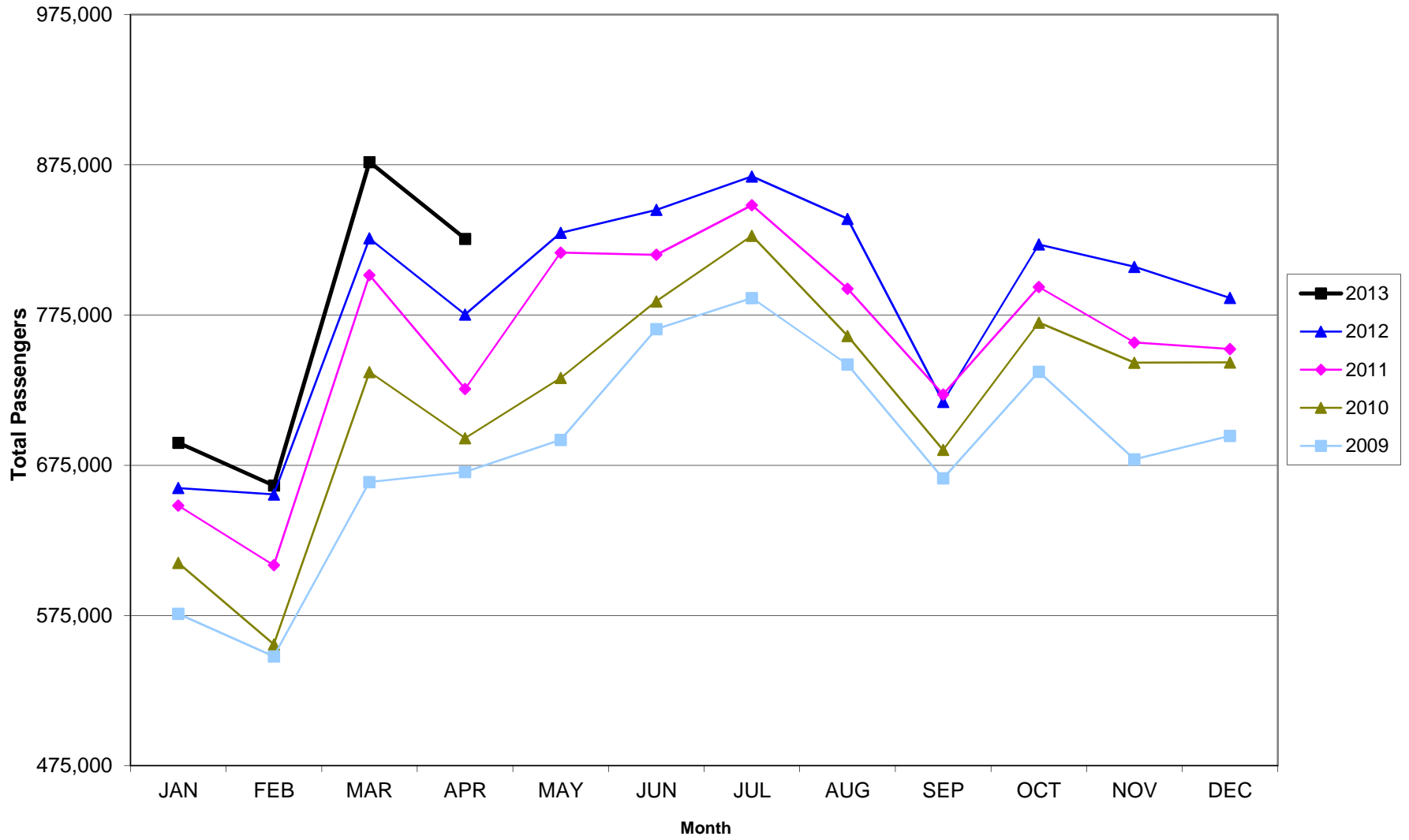
CURRENT CARGO RECORD = 40,215,518

RECORD SET = MARCH 2001

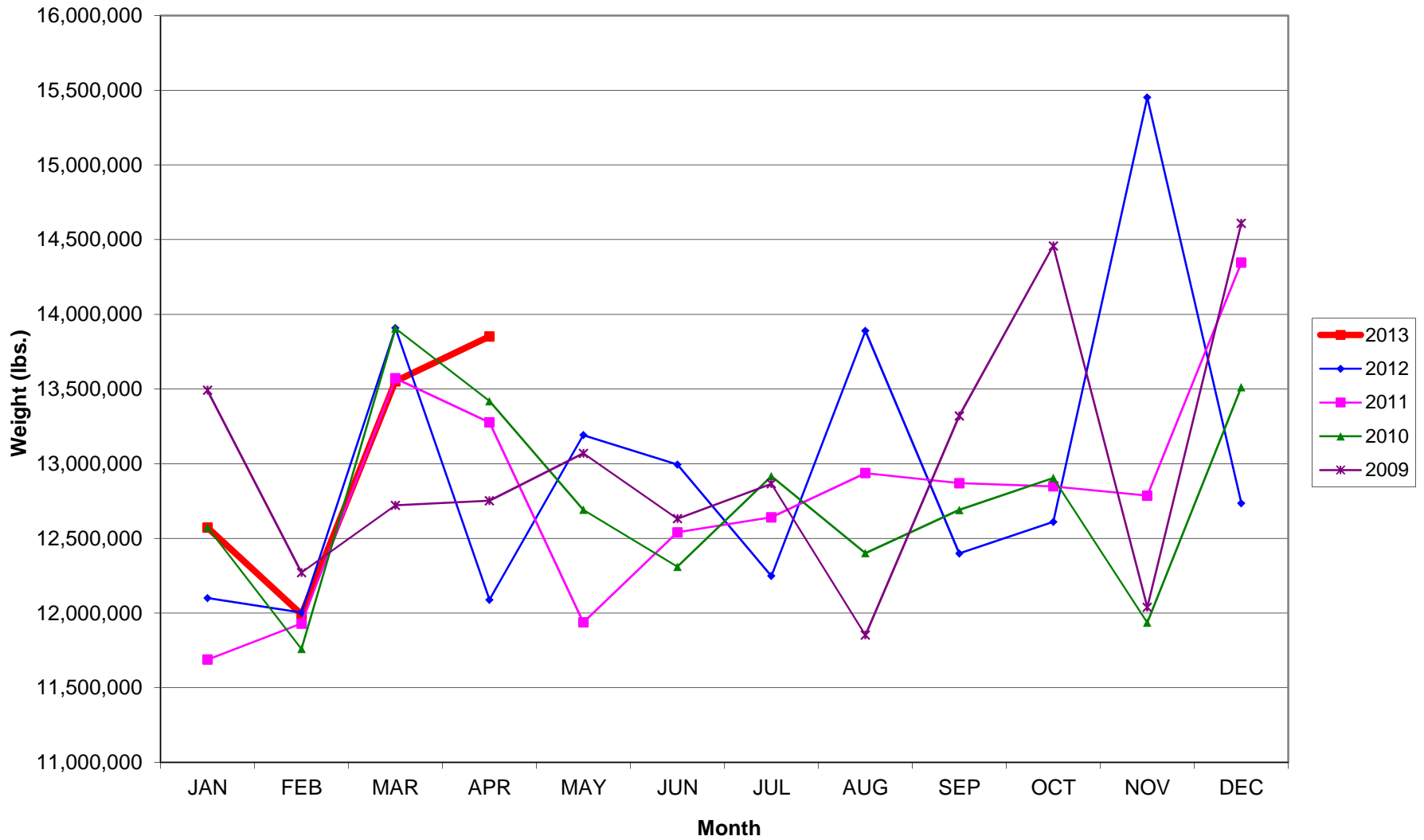
AUS – Airline Codes
April 2013

<u>Code</u>	<u>Carrier</u>
AS	Alaska Airlines, Inc.
G4	Allegiant Air
AA	American Airlines, Inc. Post-Petition (DIP) (Includes American Eagle)
DL	Delta Airlines
XE	Express Jet Airlines, Inc. (UA Express)
F9	Frontier Airlines
G7	GoJet Airlines dba United Express
B6	JetBlue Airways Corp.
YV	Mesa Airlines Inc – DIP (US Airways & UA Express)
RW	Republic Airlines, Inc.
S5	Shuttle America Corp. (UA Express)
OO	Sky West Airlines, Inc. (UA Express)
WN	Southwest Airlines
UA	United Airlines, Inc.
US	US Airways Group, Inc.

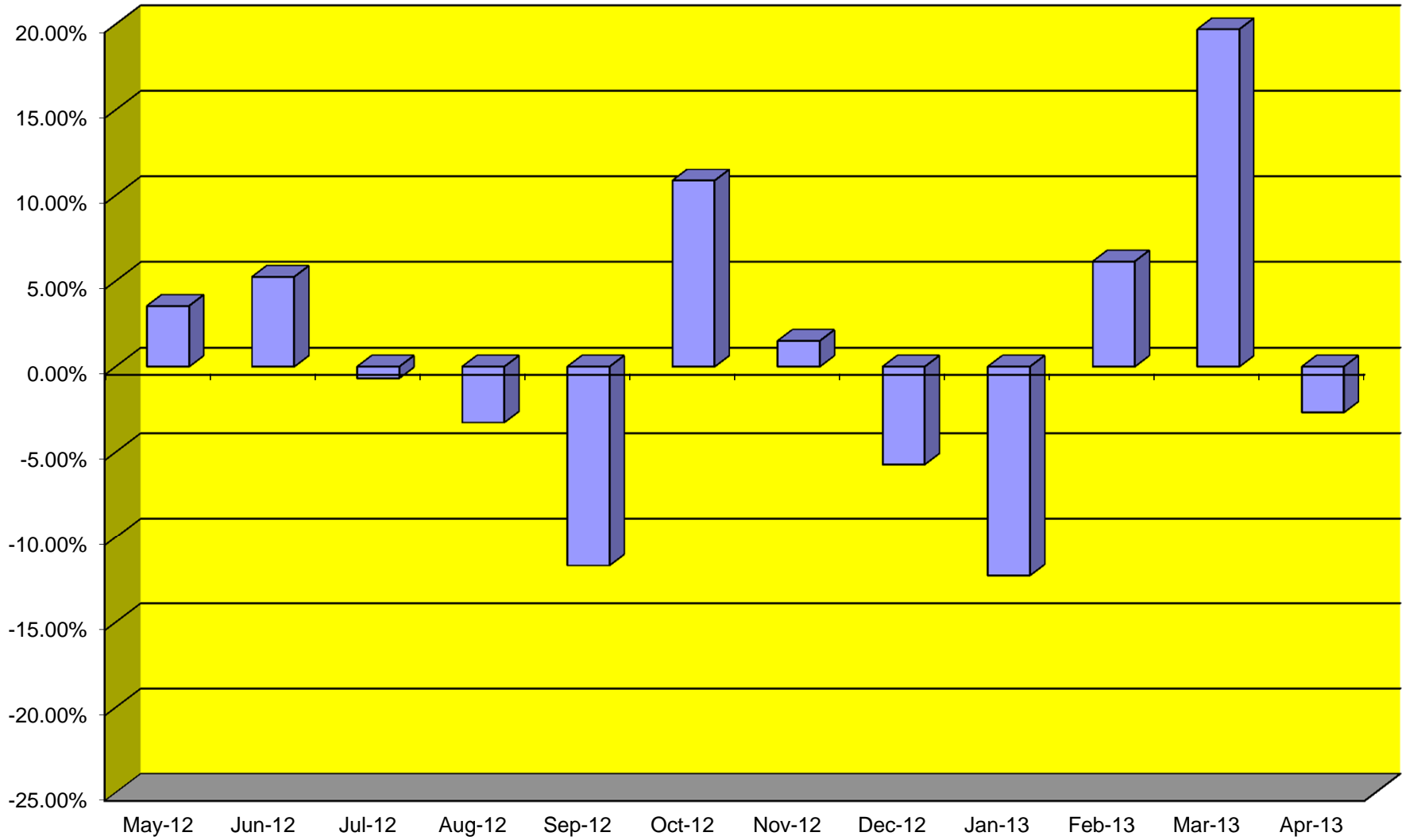
AUSTIN PASSENGER TRAFFIC 5 Year Trend



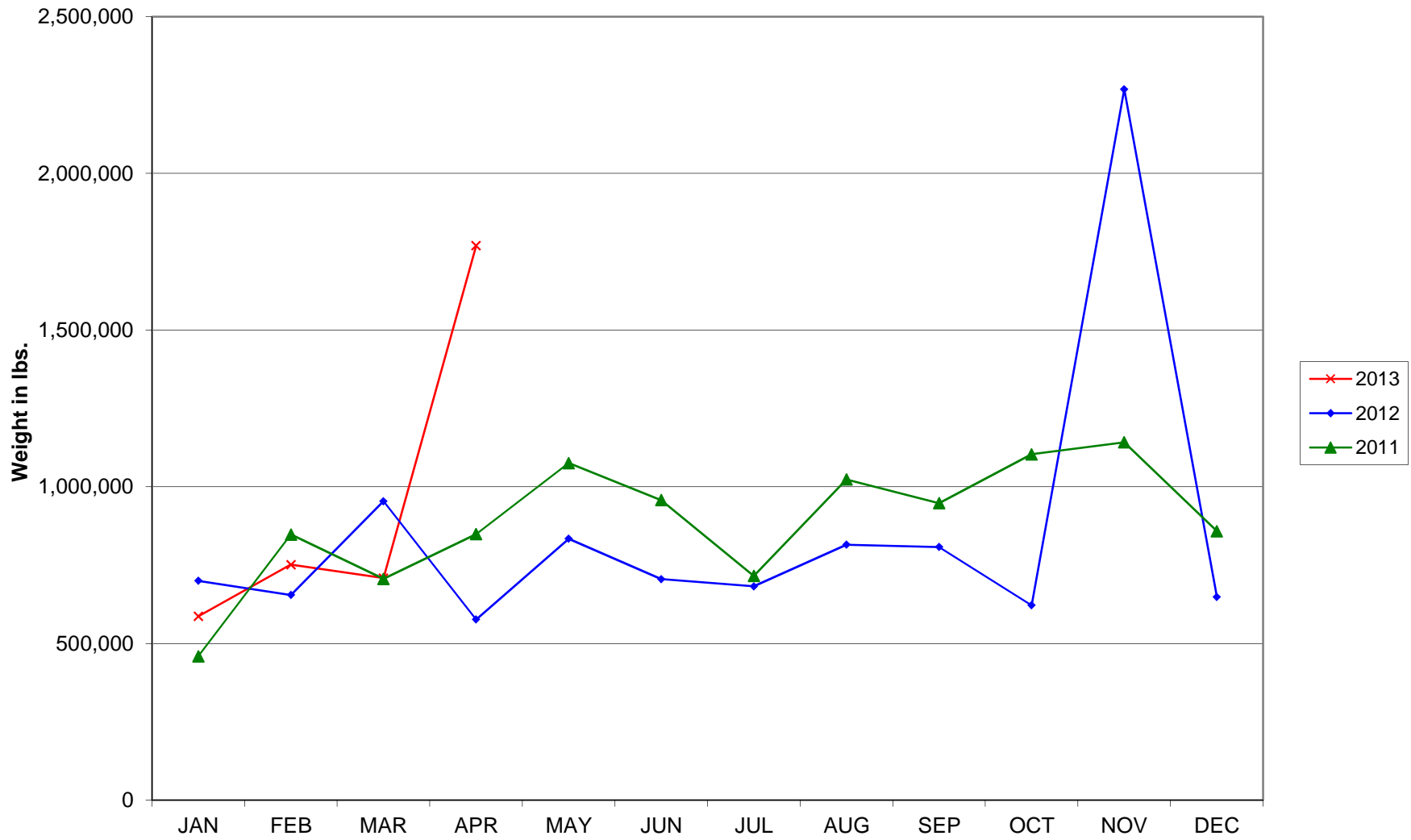
TOTAL CARGO POUNDAGE - AUSTIN, TEXAS



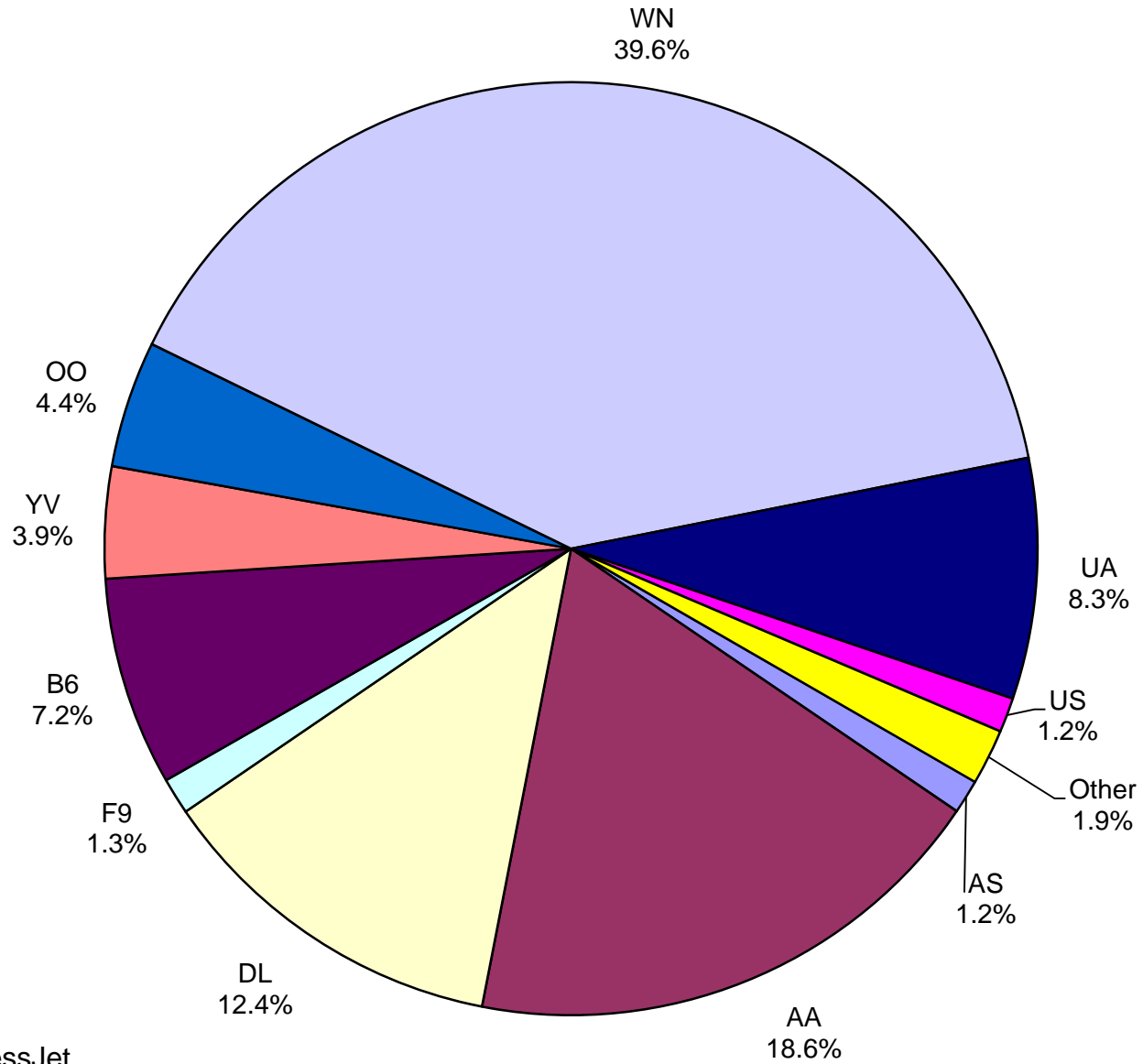
Monthly % Change in Average Daily Passengers



History of International Air Cargo



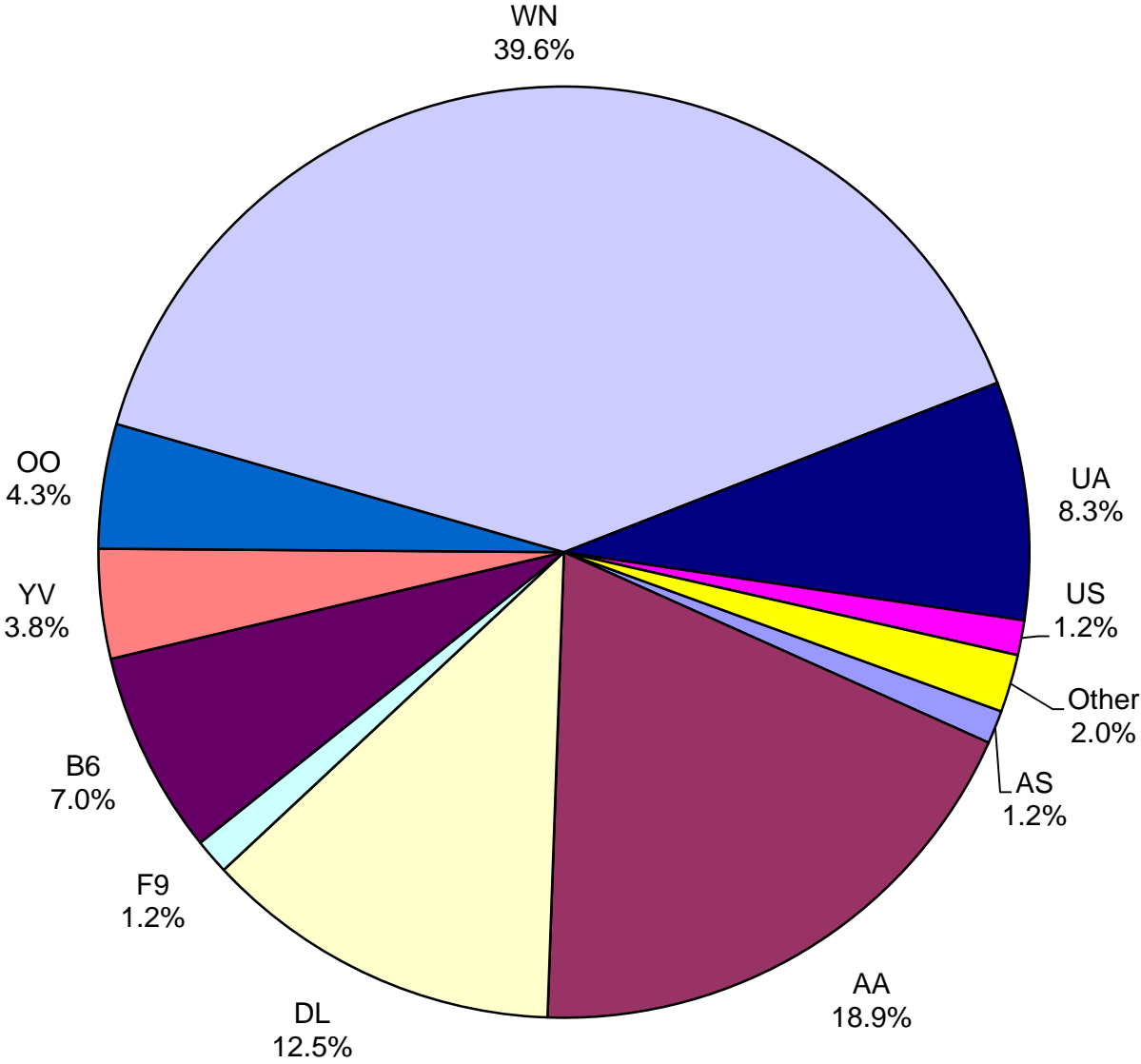
**Total Passengers
April 2013**



Other = Allegiant Air, ExpressJet, Shuttle America and Republic Airlines, Inc.

Note: United Airlines percentage includes sub-contractors.

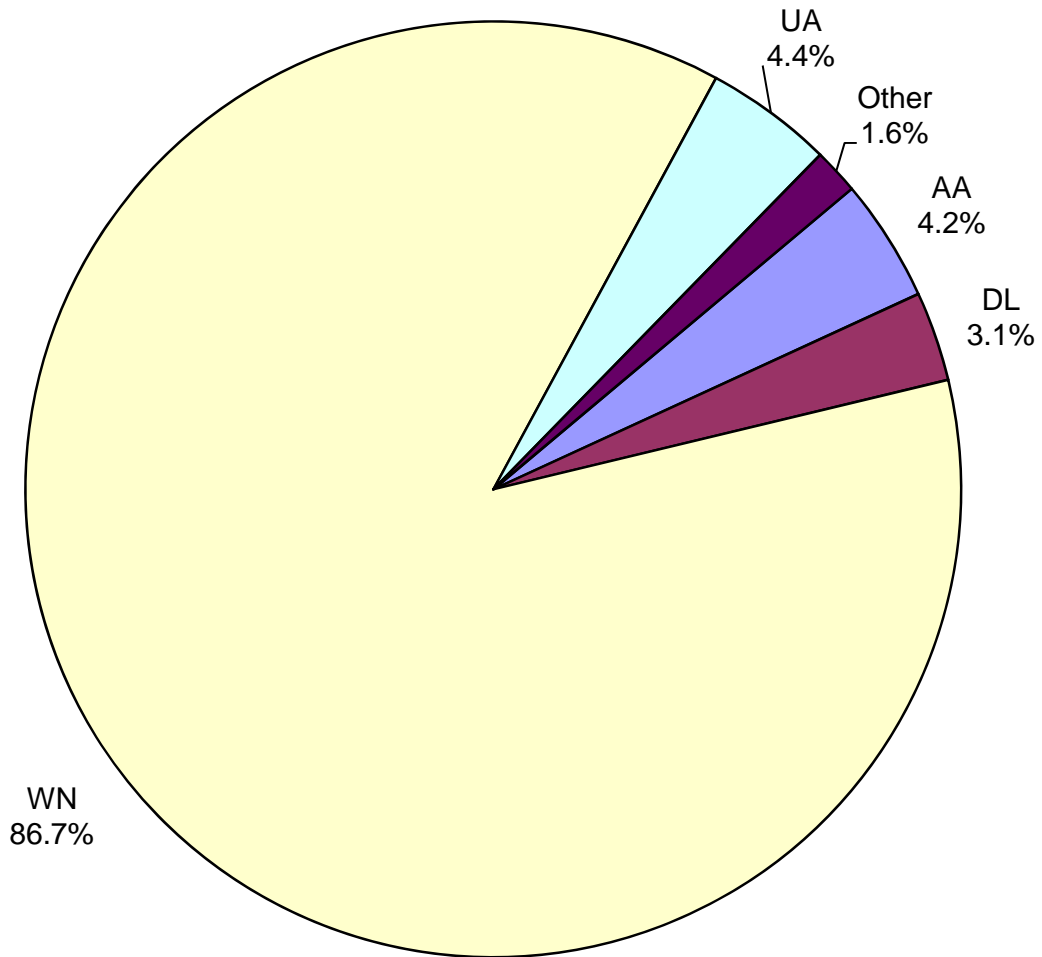
**All Passenger Carriers
Enplaned Revenue Passengers
April 2013**



Other = Allegiant Air, ExpressJet, Shuttle America and Republic Airlines, Inc.

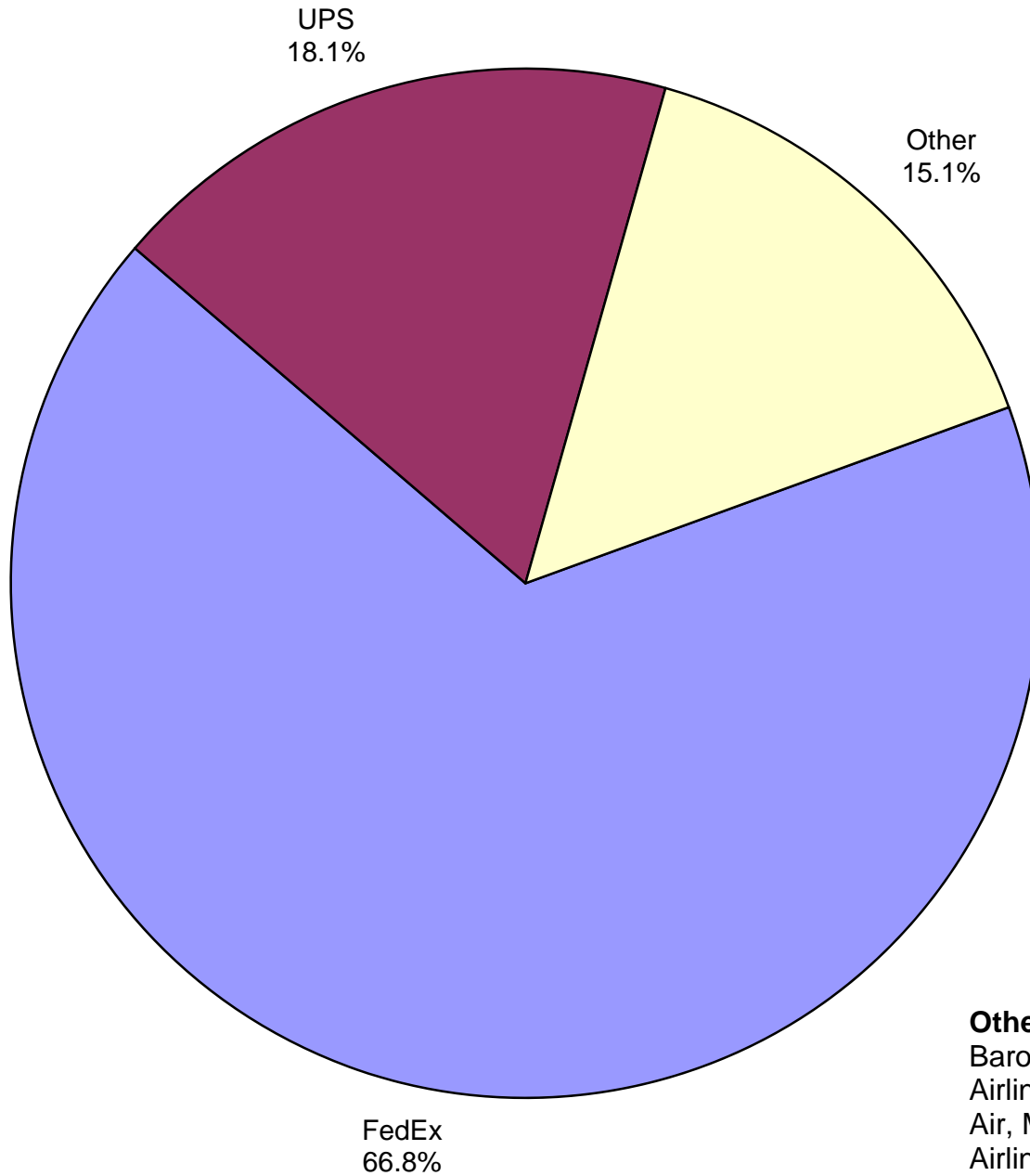
Note: United Airlines percentage includes sub-contractors.

**AUS Belly Freight Market Shares
April 2013**



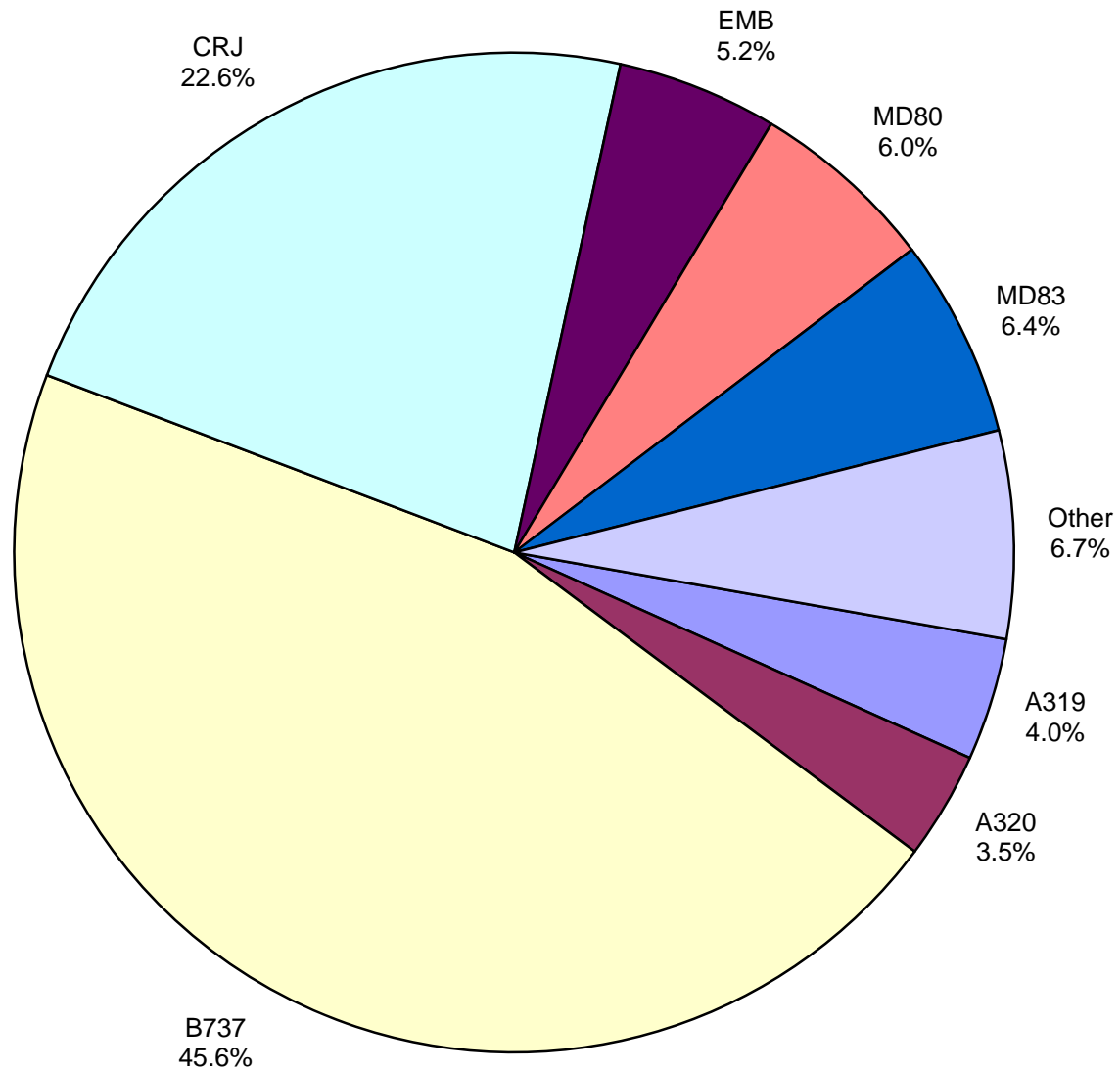
Other = Alaska Airlines, Frontier Airlines,
JetBlue Airways Corp., Mesa Airlines Inc (DIP)
and US Airways

**Air Cargo Market Shares
April 2013**



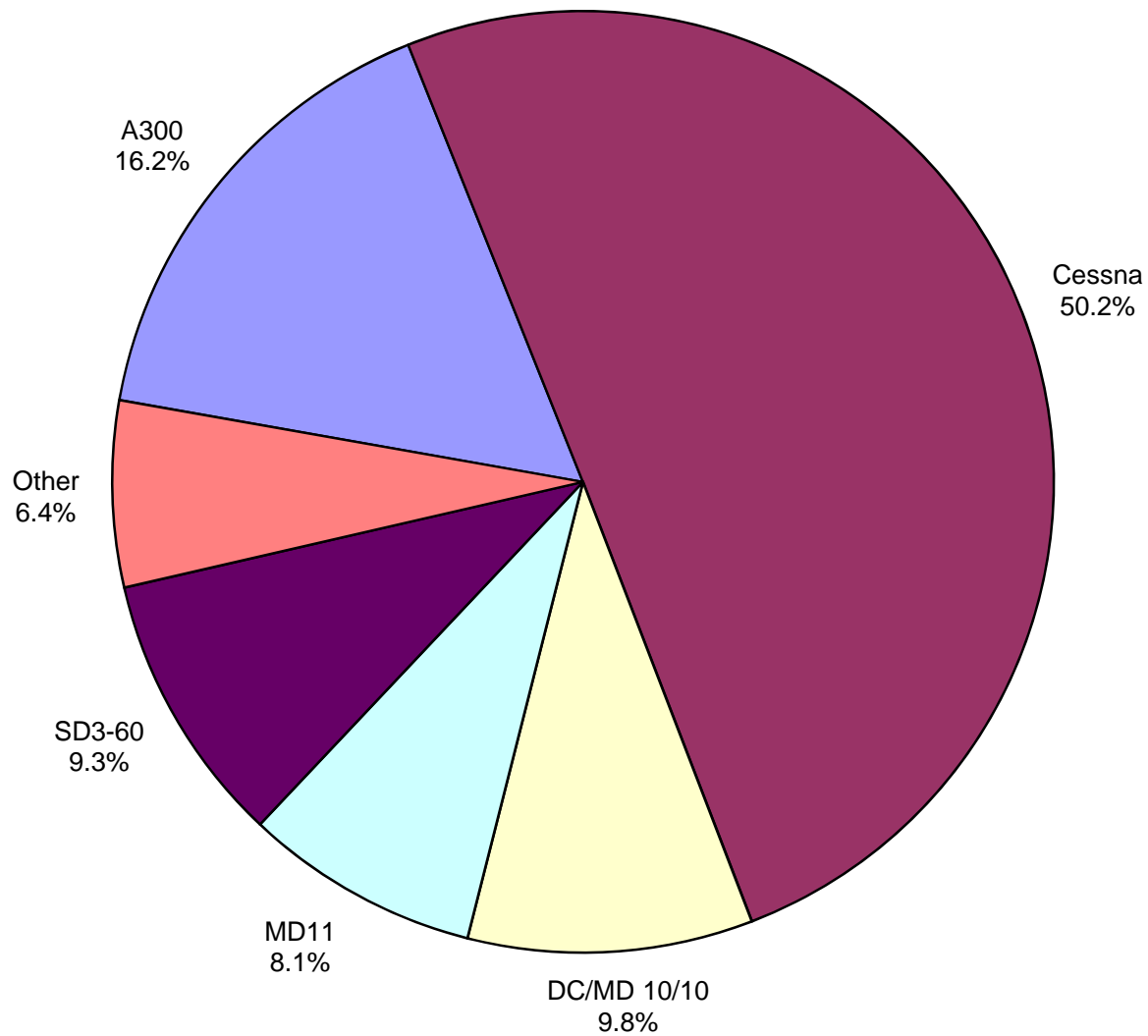
Other: Air Cargo Carriers, Ameriflight, Baron Aviation, Atlas Air, Inc., Cargolux Airlines, Int'l, Evergreen Int'l Airlines, Kallita Air, Martinaire Parnters, L.P., National Airlines, Nippon Cargo Airlines, USA Jet Airlines

**AUS Scheduled Passenger Aircraft Fleet Mix
April 2013**



Other: B757, B767, ERJ
and MD90

**AUS Scheduled Cargo Aircraft Fleet Mix
April 2013**



Other: SA-227, B747, DC-9,
DC/MD-10/30 and Lear 25

Austin-Bergstrom International Airport

PAX Detail Report - April, 2013

Period Company	04/2013	04/2012	YTD		YTD 2013	YTD 2012	2013		2012 Share	Share Share	Diff
			Difference	Change			Difference	Change			
Alaska Airlines, Inc.	9,722	9,804	-82	-0.8	37,068	37,584	-516	-1.4	1.2	1.3	-0.1
Allegiant Air	272	195	77	39.5	793	838	-45	-5.4	0.0	0.0	0.0
American Airlines, Inc. - Post-Petition (DIP)	153,150	160,028	-6,878	-4.3	594,441	584,284	10,157	1.7	19.5	20.0	-0.6
Ameristarjet Charter Inc.	0	0	0	0.0	71	2	69	3,450.0	0.0	0.0	0.0
Continental Airlines	0	56,842	-56,842	-100.0	103,392	246,075	-142,683	-58.0	3.4	8.4	-5.1
Delta Air Lines	102,496	95,312	7,184	7.5	364,896	351,085	13,811	3.9	11.9	12.0	-0.1
Express Jet Airlines, Inc.	7,364	1,567	5,797	369.9	13,208	4,216	8,992	213.3	0.4	0.1	0.3
Frontier Airlines, Inc.	10,441	14,388	-3,947	-27.4	43,322	64,125	-20,803	-32.4	1.4	2.2	-0.8
GoJet Airlines d/b/a United Express	15,419	13,096	2,323	17.7	68,191	44,819	23,372	52.1	2.2	1.5	0.7
JetBlue Airways Corporation	59,780	45,740	14,040	30.7	202,036	178,110	23,926	13.4	6.6	6.1	0.5
Mesa Airlines Inc - DIP	31,906	31,768	138	0.4	114,494	121,370	-6,876	-5.7	3.7	4.2	-0.4
Miami Air International Inc.	0	0	0	0.0	342	0	342	0.0	0.0	0.0	0.0
Republic Airlines, Inc.	575	0	575	0.0	575	0	575	0.0	0.0	0.0	0.0
Shuttle America Corporation	7,730	480	7,250	1,510.4	12,554	16,940	-4,386	-25.9	0.4	0.6	-0.2
SkyWest Airlines, Inc	36,264	43,242	-6,978	-16.1	157,107	125,573	31,534	25.1	5.1	4.3	0.8
Southwest Airlines	327,357	291,413	35,944	12.3	1,183,692	1,102,144	81,548	7.4	38.8	37.8	1.0
Sun Country Airlines/ MN Airlines, LLC	0	0	0	0.0	271	0	271	0.0	0.0	0.0	0.0
United Airlines, Inc.	53,447	11,239	42,208	375.5	120,992	39,105	81,887	209.4	4.0	1.3	2.6
US Airways Group, Inc.	9,833	0	9,833	0.0	36,042	0	36,042	0.0	1.2	0.0	1.2
US Marshall Service / JPATS	0	0	0	0.0	0	1	-1	-100.0	0.0	0.0	0.0
Vision Airlines, Inc.	0	249	-249	-100.0	490	495	-5	-1.0	0.0	0.0	0.0
World Atlantic Airlines	0	0	0	0.0	164	0	164	0.0	0.0	0.0	0.0
Report Totals	825,756	775,363	50,393	6.5%	3,054,141	2,916,766	137,375	4.7%			

Statistics Included in Report:

Domestic Passengers: Enplaned Revenue, Deplaned Revenue, Enplaned Non-Revenue, Deplaned Non-Revenue

International Passengers: Enplaned Revenue, Deplaned Revenue, Enplaned Non-Revenue, Deplaned Non-Revenue, South Terminal-Intl Enplaned Revenue, South Terminal-Intl Deplaned Revenue, South Terminal-Intl Enplaned Non-Revenue, South Terminal-Intl Deplaned Non-Revenue.

Austin-Bergstrom International Airport

Summary Landing Report

Landing Type: Total

Month	2013		2012		2011		% Change 2013 - 2012		% Change 2012 - 2011	
	Count	Weight	Count	Weight	Count	Weight	Count	Weight	Count	Weight
January	4,176	469,844,487	4,033	441,029,354	4,214	463,934,037	3.55%	6.53%	-4.30%	-4.94%
February	3,824	428,117,442	3,892	432,535,353	3,776	417,430,253	-1.75%	-1.02%	3.07%	3.62%
March	4,660	536,989,561	4,372	496,635,886	4,539	498,238,970	6.59%	8.13%	-3.68%	-0.32%
April	4,425	504,739,959	4,260	479,535,174	4,274	479,035,366	3.87%	5.26%	-0.33%	0.10%
May			4,385	509,470,460	4,564	500,806,412			-3.92%	1.73%
June			4,425	503,932,220	4,378	490,983,485			1.07%	2.64%
July			4,586	524,142,423	4,499	504,634,624			1.93%	3.87%
August			4,532	519,056,485	4,415	499,285,697			2.65%	3.96%
September			4,181	484,324,879	4,226	477,495,780			-1.06%	1.43%
October			4,424	512,451,397	4,309	490,427,499			2.67%	4.49%
November			4,283	504,246,217	4,078	460,449,178			5.03%	9.51%
December			4,391	498,622,124	4,234	473,997,984			3.71%	5.19%
Totals for Selected Period	17,085	1,939,691,449	16,557	1,849,735,767	16,803	1,858,638,626	3.19%	4.86%	-1.46%	-0.48%
Yearly Totals	17,085	1,939,691,449	51,764	5,905,981,972	51,506	5,756,719,285			0.50%	2.59%