

# Austin-Bergstrom International Airport

## Aviation Activity Report

### Calendar Year 2013 vs 2012

	03/2013	03/2012	Percent Change	01/2013 - 03/2013	01/2012 - 03/2012	Percent Change
<b><u>Passenger Activity</u></b>						
Domestic Enplaned Revenue	425,437	401,357	6.00	1,071,000	1,036,940	3.28
Domestic Deplaned Revenue	428,289	408,129	4.94	1,094,558	1,052,699	3.98
International Enplaned Revenue	1,780	0	0.00	3,648	0	0.00
International Deplaned Revenue	1,995	0	0.00	4,239	0	0.00
Domestic Enplaned Non-Revenue	10,202	8,569	19.06	28,980	27,081	7.01
Domestic Deplaned Non-Revenue	9,072	7,903	14.79	25,919	24,683	5.01
International Enplaned Non-Revenue	15	0	0.00	21	0	0.00
International Deplaned Non-Revenue	16	0	0.00	20	0	0.00
South Terminal-Intl Enplaned Revenue	0	0	0.00	0	0	0.00
South Terminal-Intl Deplaned Revenue	0	0	0.00	0	0	0.00
South Terminal-Intl Enplaned Non-Revenue	0	0	0.00	0	0	0.00
South Terminal-Intl Deplaned Non-Revenue	0	0	0.00	0	0	0.00
Passenger Totals	876,806	825,958	6.16	2,228,385	2,141,403	4.06

**NEW CURRENT PASSENGER RECORD = 876,806    RECORD SET = MARCH 2013**

### **Aircraft Operations**

Air Carrier	8,816	8,317	6.00	24,036	23,293	3.19
Commuter & Air Taxi	1,564	1,339	16.80	3,967	3,802	4.34
Military	462	401	15.21	1,538	1,457	5.56
General Aviation						
Itinerant	4,709	4,074	15.59	12,612	11,683	7.95
Local	226	208	8.65	671	504	33.13
Total G.A.	4,935	4,282	15.25	13,283	12,187	8.99
Total Operations	15,777	14,339	10.03	42,824	40,739	5.12

# Austin-Bergstrom International Airport

## Aviation Activity Report

### Calendar Year 2013 vs 2012

	03/2013	03/2012	Percent Change	01/2013 - 03/2013	01/2012 - 03/2012	Percent Change
<b><u>Cargo Activity</u></b>						
Mail						
Domestic Enplaned Mail	135,450	70,119	93.17	289,335	224,877	28.66
Domestic Deplaned Mail	227,220	154,240	47.32	523,324	467,476	11.95
International Enplaned Mail	0	0	0.00	0	0	0.00
International Deplaned Mail	0	0	0.00	0	0	0.00
South Terminal-Intl Enplaned Mail	0	0	0.00	0	0	0.00
South Terminal-Intl Deplaned Mail	0	0	0.00	0	0	0.00
Mail Totals	362,670	224,359	61.65	812,659	692,353	17.38
Cargo						
Domestic Enplaned Cargo	5,382,249	5,640,134	-4.57	15,514,657	15,334,849	1.17
Domestic Deplaned Cargo	6,312,691	6,154,736	2.57	17,521,314	17,048,455	2.77
International Enplaned Cargo	387,386	473,585	-18.20	1,132,130	1,302,631	-13.09
International Deplaned Cargo	321,111	480,291	-33.14	913,672	1,005,621	-9.14
South Terminal-Intl Enplaned Cargo	0	0	0.00	0	0	0.00
South Terminal-Intl Deplaned Cargo	0	0	0.00	0	0	0.00
Cargo Totals	12,403,437	12,748,746	-2.71	35,081,773	34,691,556	1.12
Belly Freight						
Domestic Enplaned Belly Freight	361,637	455,901	-20.68	1,016,534	1,319,546	-22.96
Domestic Deplaned Belly Freight	424,353	478,562	-11.33	1,204,273	1,307,910	-7.92
International Enplaned Belly Freight	0	0	0.00	0	0	0.00
International Deplaned Belly Freight	0	0	0.00	0	0	0.00
South Terminal-Intl Enplaned Belly Frt	0	0	0.00	0	0	0.00
South Terminal-Intl Deplaned Belly Frt	0	0	0.00	0	0	0.00
Belly Freight Totals	785,990	934,463	-15.89	2,220,807	2,627,456	-15.48
Cargo Totals (Mail, Cargo, Belly Freight)	13,552,097	13,907,568	-2.56	38,115,239	38,011,365	0.27

CURRENT CARGO RECORD = 40,215,518

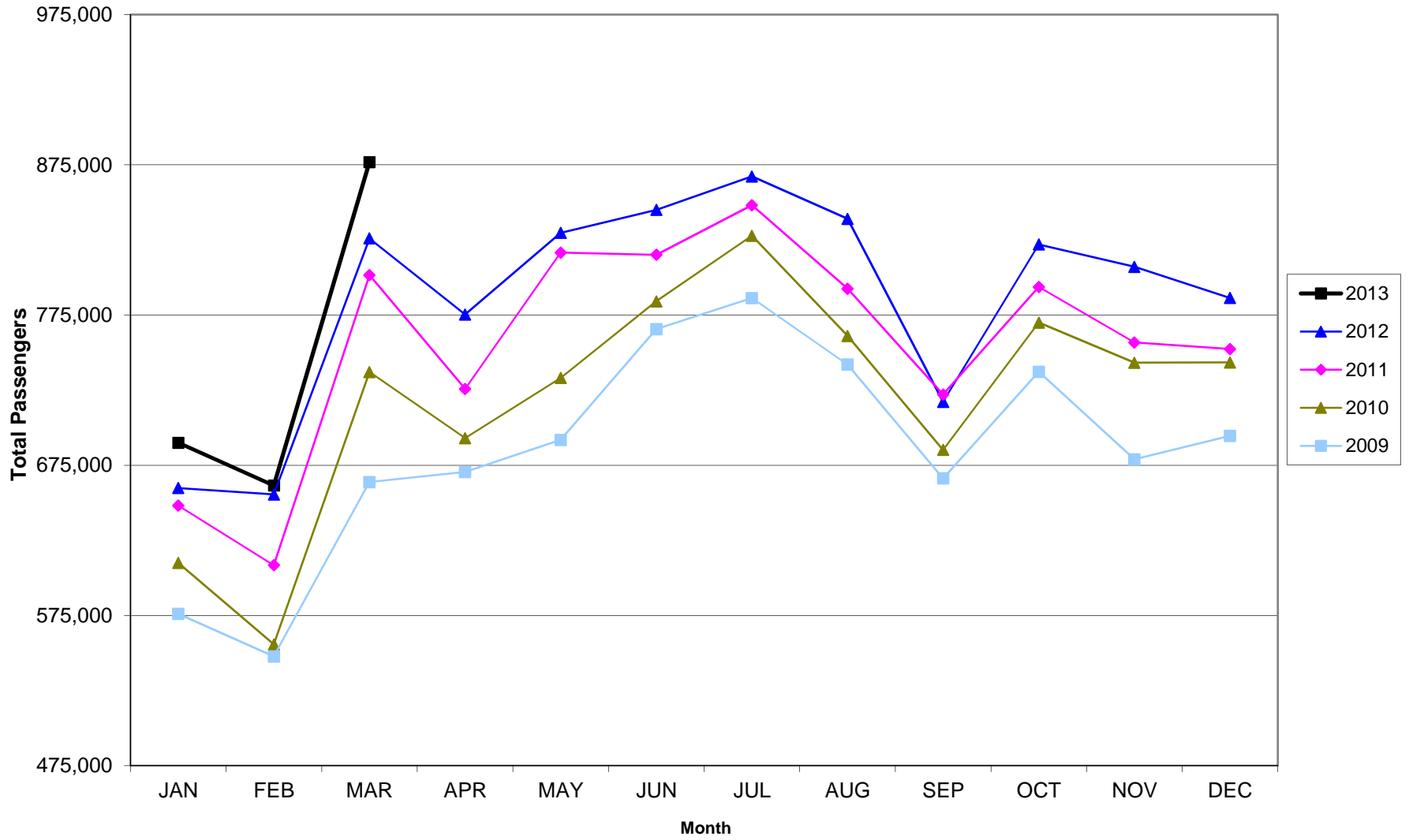
RECORD SET = MARCH 2001

## AUS – Airline Codes

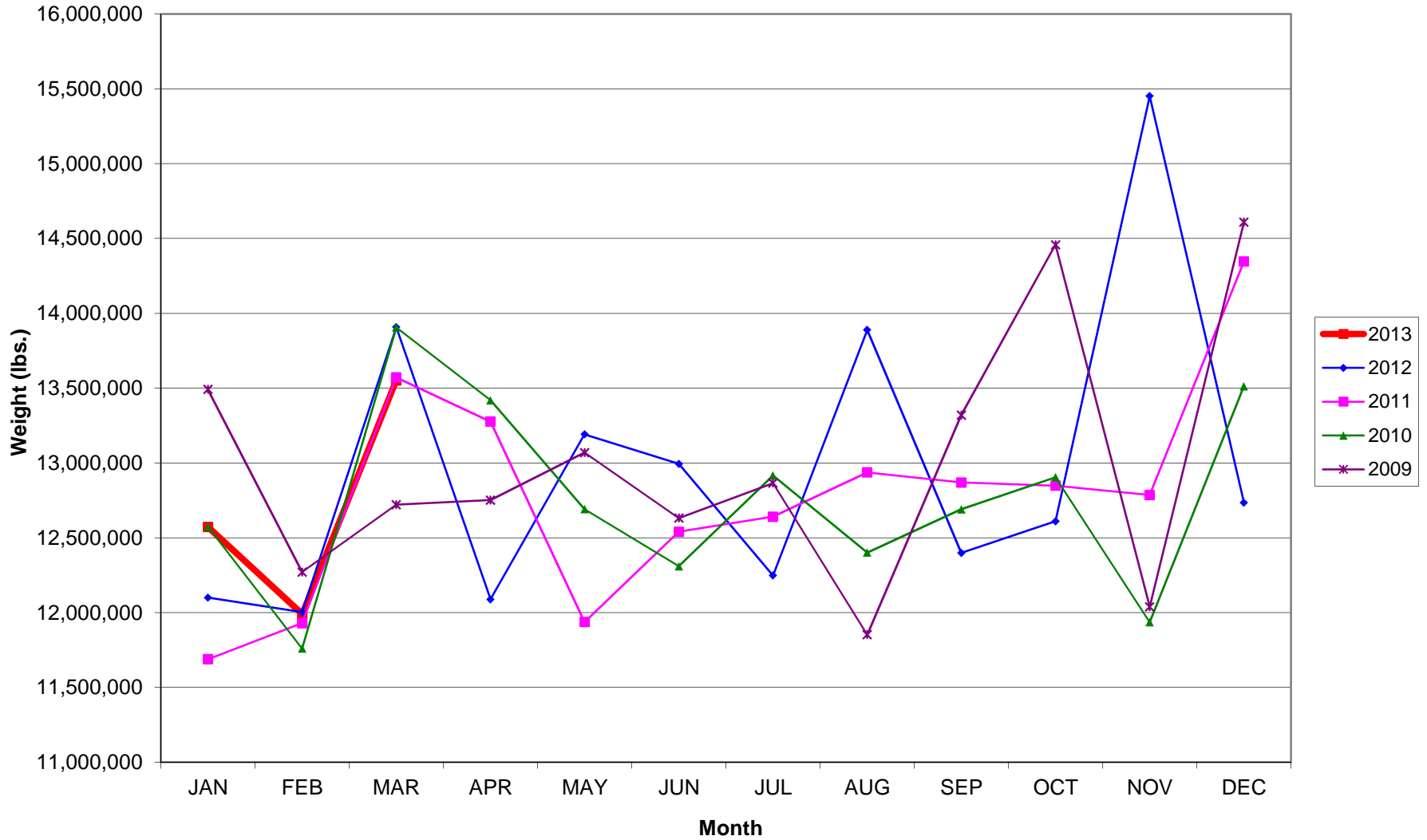
March 2013

<u>Code</u>	<u>Carrier</u>
AS	Alaska Airlines, Inc.
G4	Allegiant Air
AA	American Airlines, Inc. Post-Petition (DIP) (Includes American Eagle)
AJL	Ameristarjet Charter, Inc.
CO	Continental Airlines
DL	Delta Airlines
XE	Express Jet Airlines, Inc. (UA Express)
F9	Frontier Airlines
G7	GoJet Airlines dba United Express
B6	JetBlue Airways Corp.
YV	Mesa Airlines Inc – DIP (US Airways & UA Express)
GL	Miami Air International Inc.
S5	Shuttle America Corp. (UA Express)
OO	Sky West Airlines, Inc. (UA Express)
WN	Southwest Airlines
SY	Sun Country Airlines/MN Airlines, LLC
UA	United Airlines, Inc.
US	US Airways Group, Inc.
V2	Vision Airlines, Inc.
K8	World Atlantic Airlines

### AUSTIN PASSENGER TRAFFIC 5 Year Trend

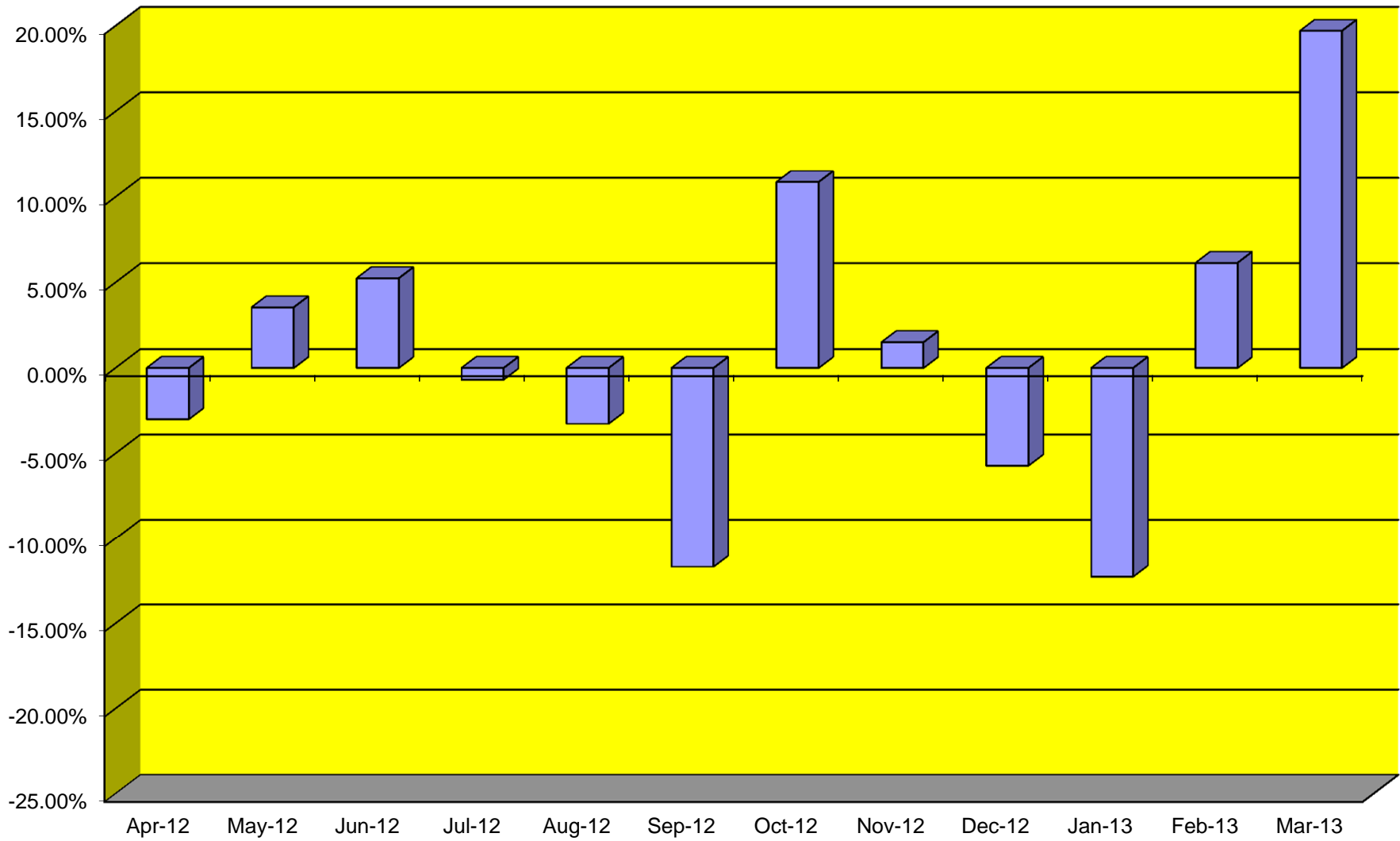


### TOTAL CARGO POUNDAGE - AUSTIN, TEXAS

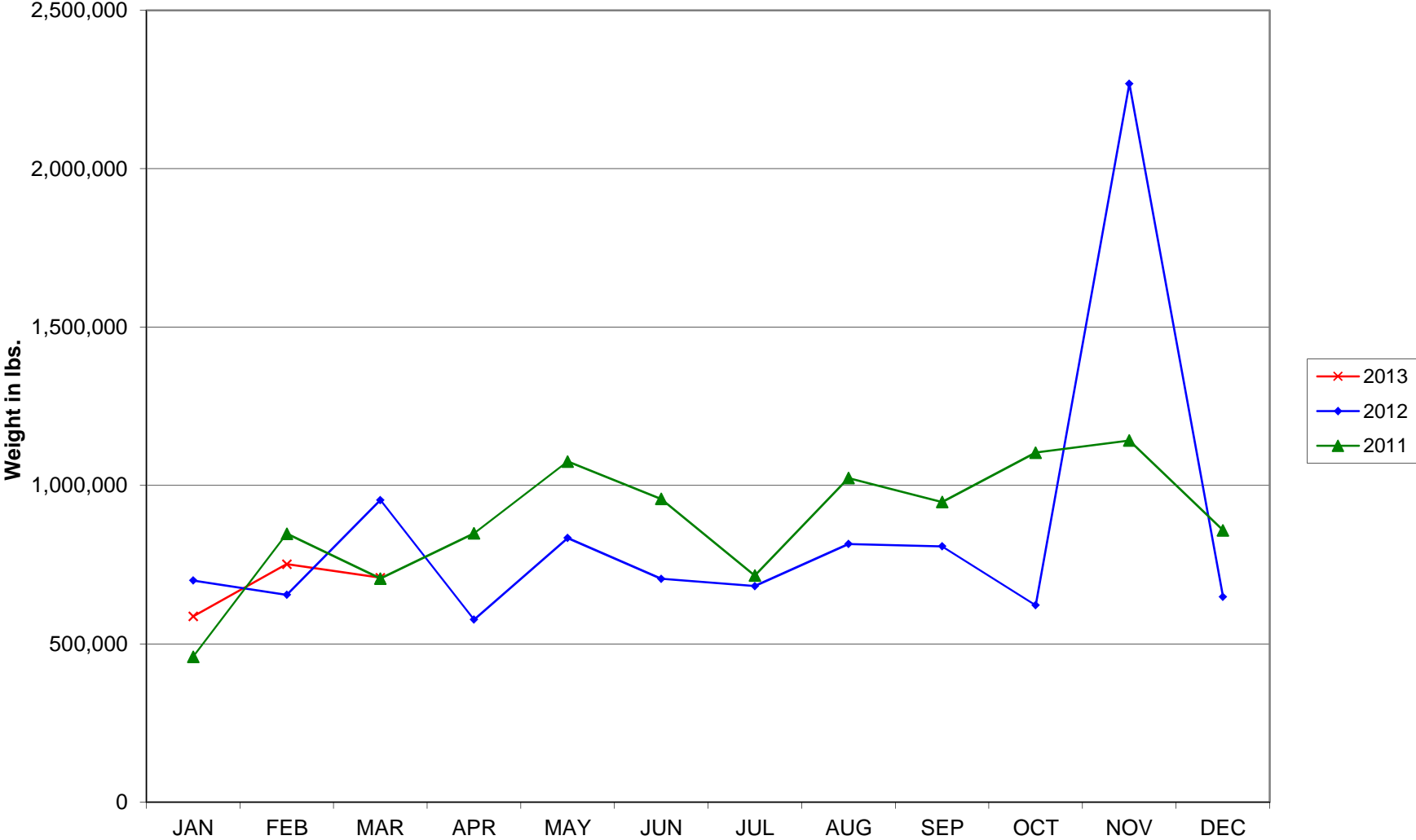




**Monthly % Change in Average Daily Passengers**

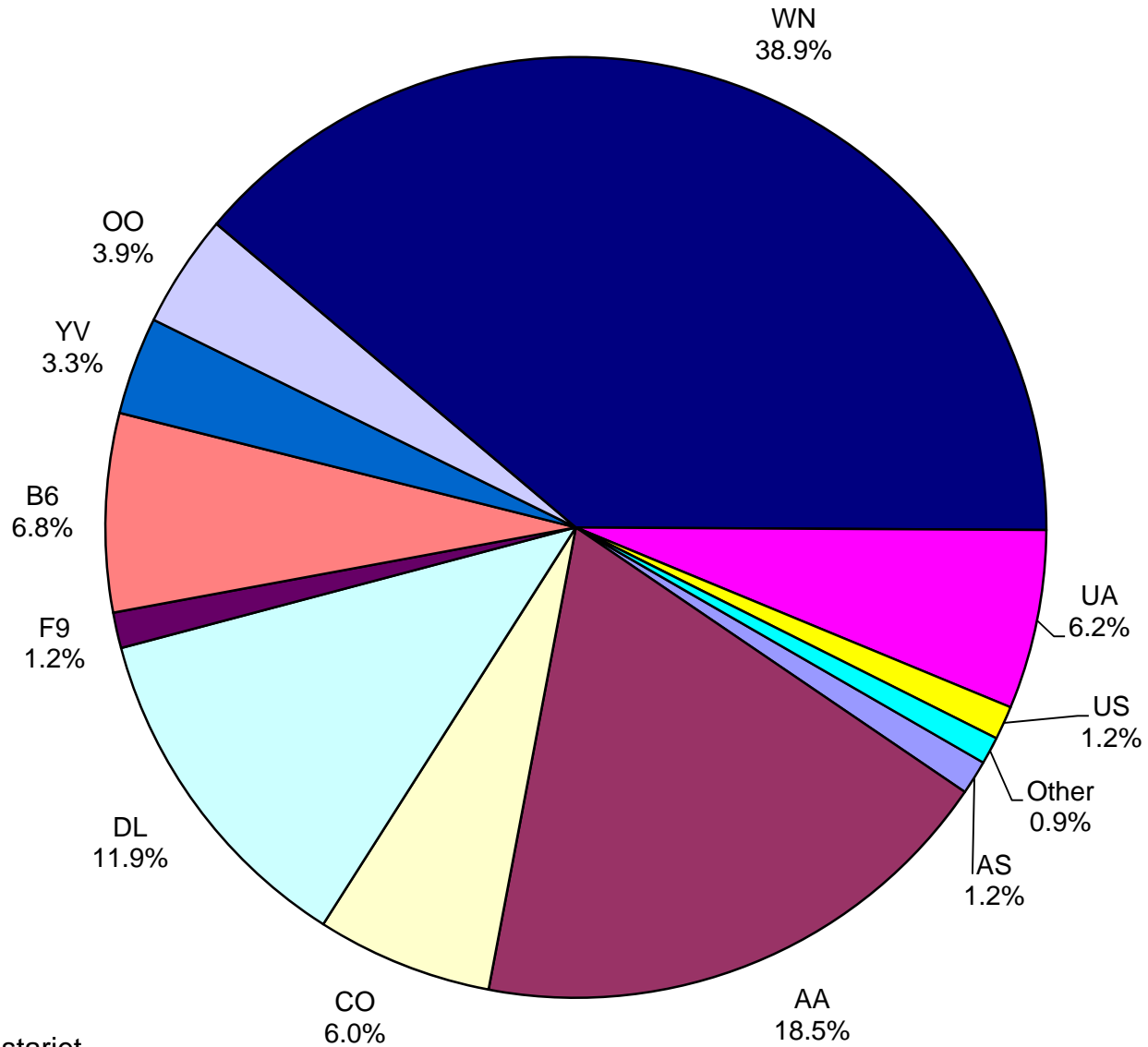


### History of International Air Cargo





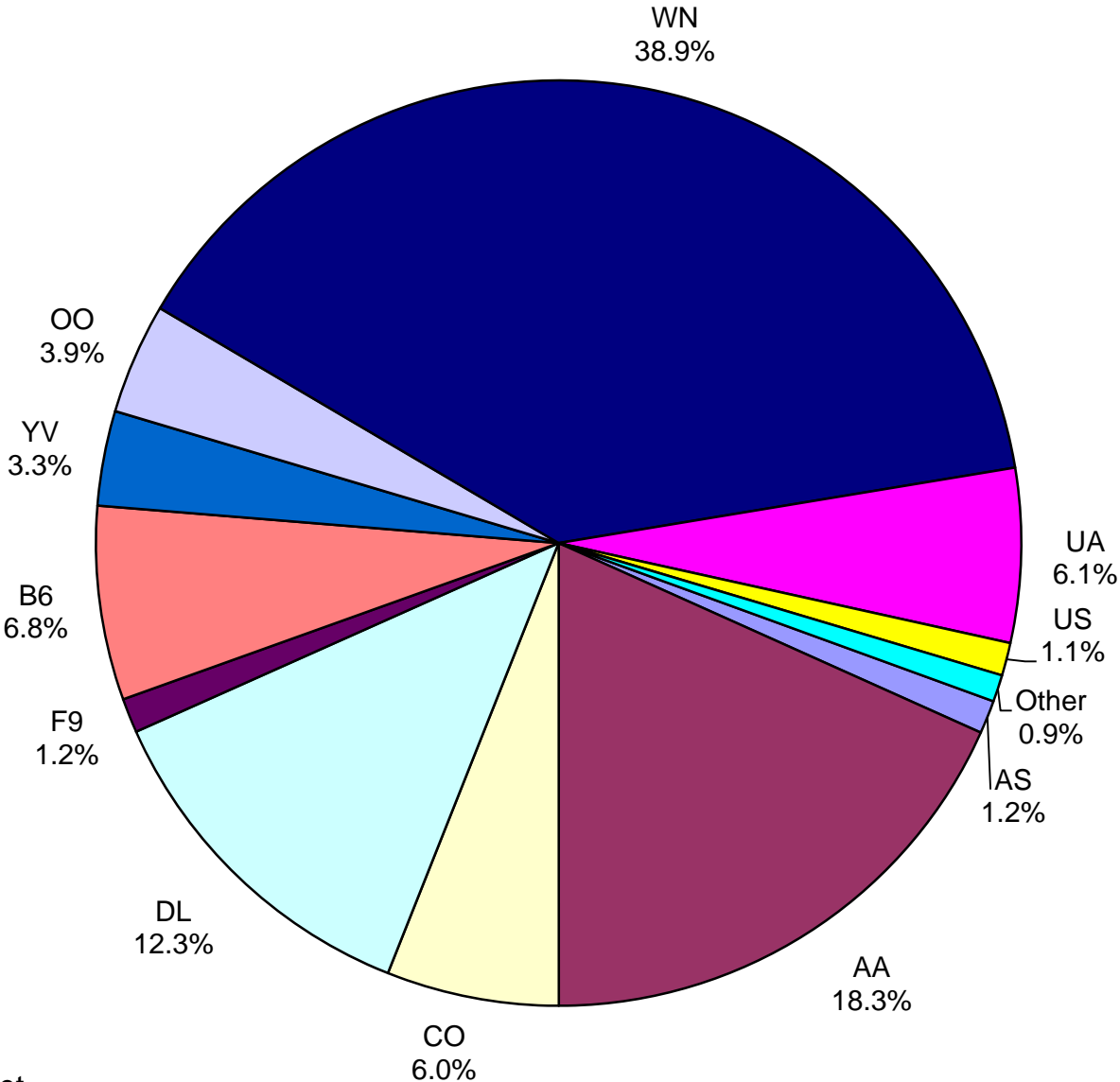
**Total Passengers  
March 2013**



**Other** = Allegiant Air, Ameristarjet Charter, Inc., ExpressJet, Miami Air International, Inc., Shuttle America, Sun Country, Vision and World Atlantic Airlines

**Note:** United Airlines percentage includes sub-contractors.

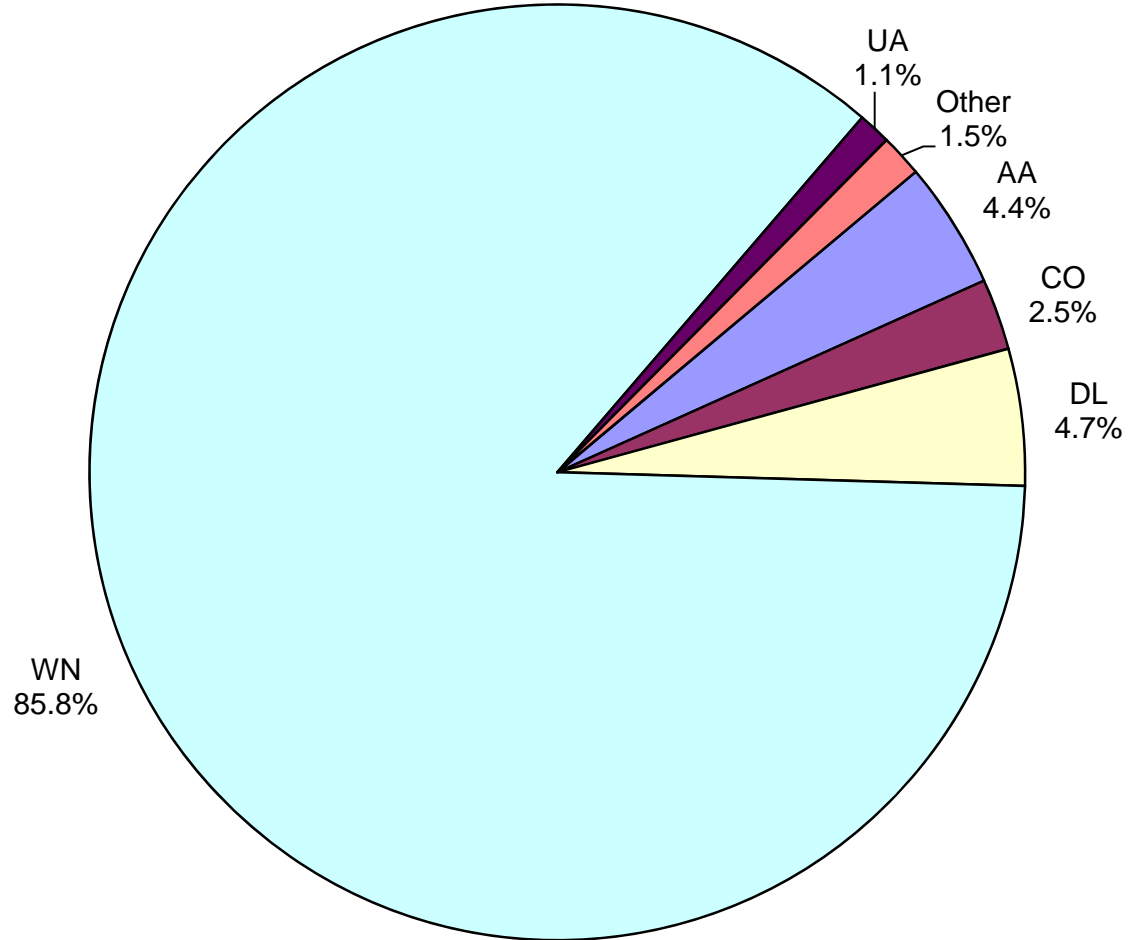
**All Passenger Carriers  
Enplaned Revenue Passengers  
March 2013**



**Other** = Allegiant Air, ExpressJet, Shuttle America, Sun Country, Vision and World Atlantic Airlines

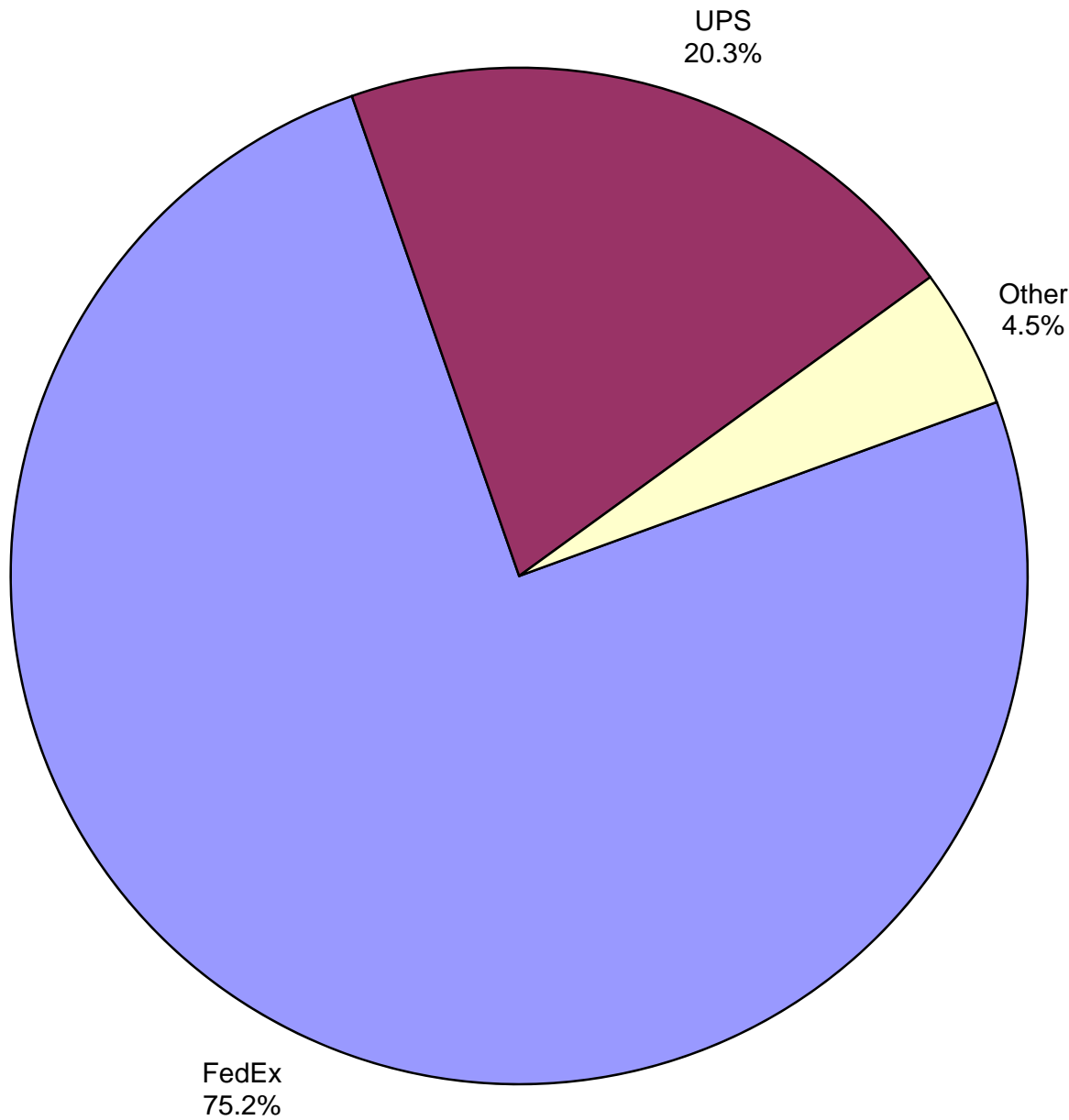
**Note:** United Airlines percentage includes sub-contractors.

**AUS Belly Freight Market Shares  
March 2013**



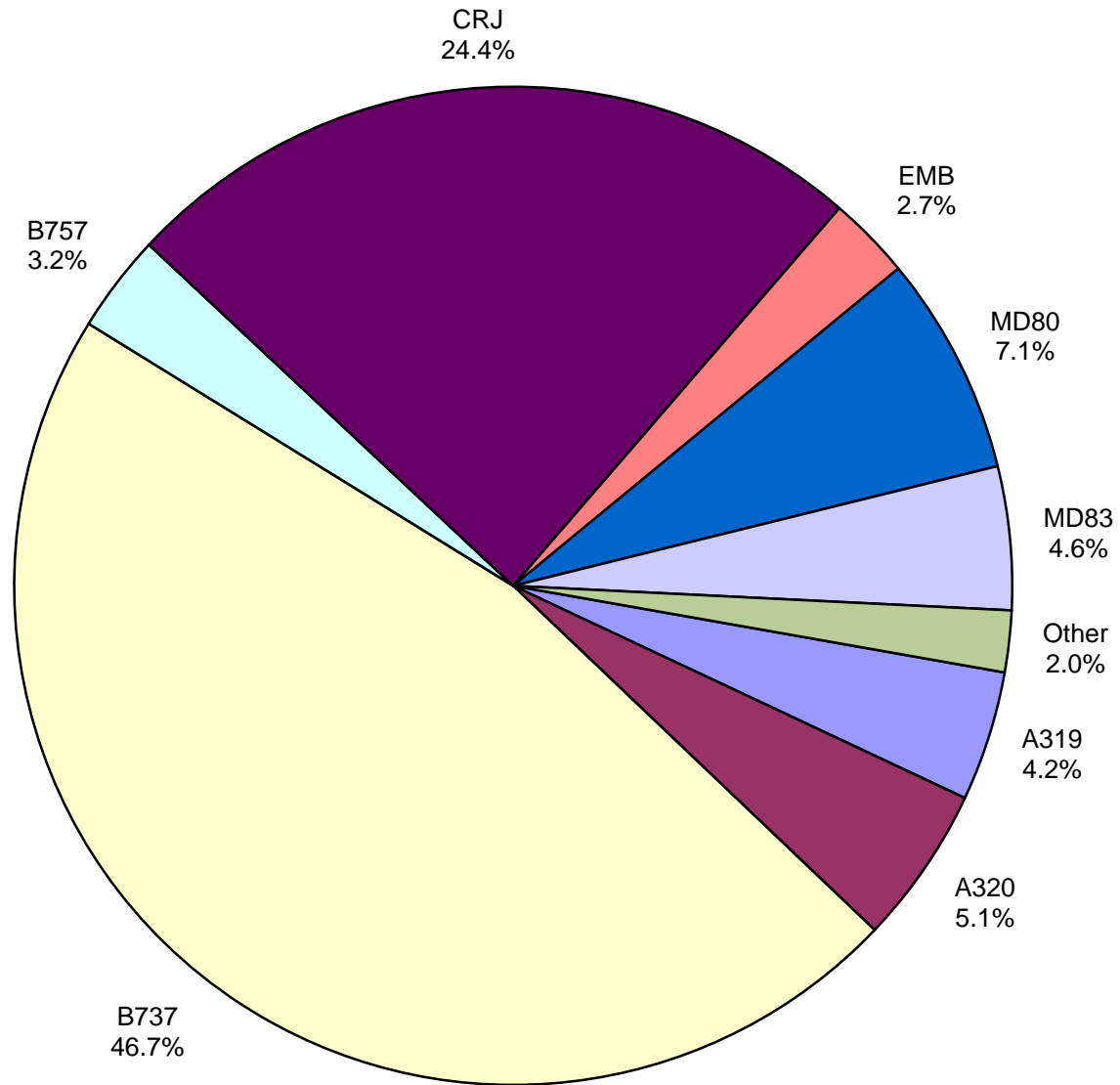
**Other** = Alaska Airlines, Frontier Airlines, Mesa Airlines, Inc.(DIP) and US Airways

**Air Cargo Market Shares  
March 2013**



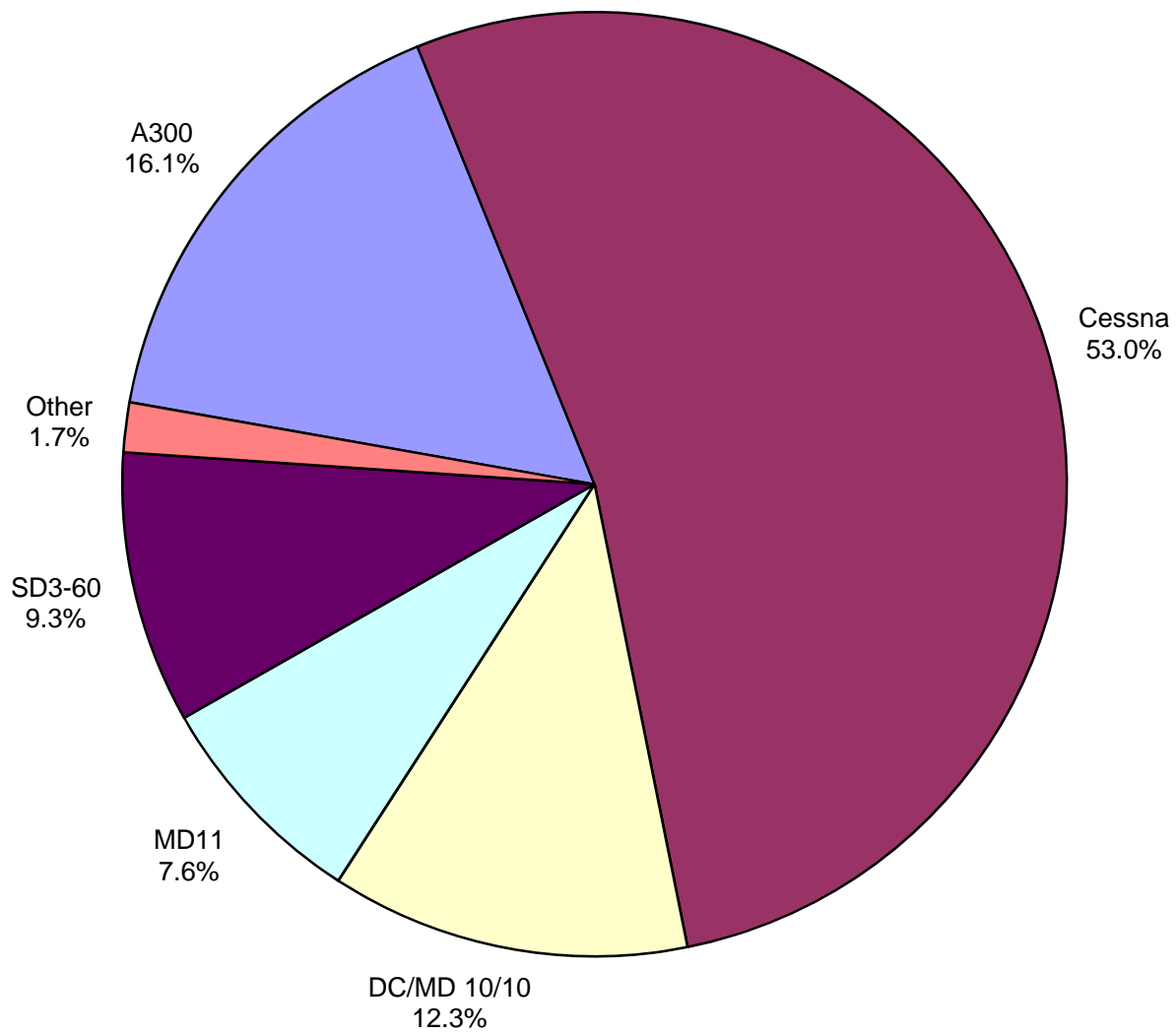
**Other:** Air Cargo Carriers, Ameriflight and Baron Aviation

### AUS Scheduled Passenger Aircraft Fleet Mix March 2013



**Other:** BE90, ERJ and MD90

**AUS Scheduled Cargo Aircraft Fleet Mix  
March 2013**



**Other:** SA-227, DC/MD10/30

# Austin-Bergstrom International Airport

## PAX Detail Report - March, 2013

Period Company	03/2013	03/2012	YTD		YTD	YTD	2013		2012	Share	Share	Diff
			Difference	Change	2013	2012	Difference	Change	Share	Share		
Alaska Airlines, Inc.	10,302	10,196	106	1.0	27,346	27,780	-434	-1.6	1.2	1.3	-0.1	
Allegiant Air	239	435	-196	-45.1	521	643	-122	-19.0	0.0	0.0	0.0	
American Airlines, Inc. - Post-Petition (DIP)	161,877	160,188	1,689	1.1	441,291	424,256	17,035	4.0	19.8	19.8	0.0	
Ameristarjet Charter Inc.	2	2	0	0.0	71	2	69	3,450.0	0.0	0.0	0.0	
Continental Airlines	53,053	70,034	-16,981	-24.2	103,392	189,233	-85,841	-45.4	4.6	8.8	-4.2	
Delta Air Lines	103,916	103,320	596	0.6	262,400	255,773	6,627	2.6	11.8	11.9	-0.2	
Express Jet Airlines, Inc.	4,336	1,037	3,299	318.1	5,844	2,649	3,195	120.6	0.3	0.1	0.1	
Frontier Airlines, Inc.	10,747	18,158	-7,411	-40.8	32,881	49,737	-16,856	-33.9	1.5	2.3	-0.8	
GoJet Airlines d/b/a United Express	20,865	12,411	8,454	68.1	52,772	31,723	21,049	66.4	2.4	1.5	0.9	
JetBlue Airways Corporation	59,788	53,562	6,226	11.6	142,256	132,370	9,886	7.5	6.4	6.2	0.2	
Mesa Airlines Inc - DIP	29,456	31,501	-2,045	-6.5	82,588	89,602	-7,014	-7.8	3.7	4.2	-0.5	
Miami Air International Inc.	171	0	171	0.0	342	0	342	0.0	0.0	0.0	0.0	
Shuttle America Corporation	2,888	8,638	-5,750	-66.6	4,824	16,460	-11,636	-70.7	0.2	0.8	-0.6	
SkyWest Airlines, Inc	34,111	26,898	7,213	26.8	120,843	82,331	38,512	46.8	5.4	3.8	1.6	
Southwest Airlines	341,240	317,635	23,605	7.4	856,335	810,731	45,604	5.6	38.4	37.9	0.6	
Sun Country Airlines/ MN Airlines, LLC	140	0	140	0.0	271	0	271	0.0	0.0	0.0	0.0	
United Airlines, Inc.	33,135	11,943	21,192	177.4	67,545	27,866	39,679	142.4	3.0	1.3	1.7	
US Airways Group, Inc.	10,134	0	10,134	0.0	26,209	0	26,209	0.0	1.2	0.0	1.2	
US Marshall Service / JPATS	0	0	0	0.0	0	1	-1	-100.0	0.0	0.0	0.0	
Vision Airlines, Inc.	242	0	242	0.0	490	246	244	99.2	0.0	0.0	0.0	
World Atlantic Airlines	164	0	164	0.0	164	0	164	0.0	0.0	0.0	0.0	
<b>Report Totals</b>	<b>876,806</b>	<b>825,958</b>	<b>50,848</b>	<b>6.2%</b>	<b>2,228,385</b>	<b>2,141,403</b>	<b>86,982</b>	<b>4.1%</b>				

### Statistics Included in Report:

Domestic Passengers:

International Passengers:

Enplaned Revenue, Deplaned Revenue, Enplaned Non-Revenue, Deplaned Non-Revenue

Enplaned Revenue, Deplaned Revenue, Enplaned Non-Revenue, Deplaned Non-Revenue, South Terminal-Intl Enplaned Revenue, South Terminal-Intl Deplaned Revenue, South Terminal-Intl Enplaned Non-Revenue, South Terminal-Intl Deplaned Non-Revenue.

# Austin-Bergstrom International Airport

## Summary Landing Report

### Landing Type: Total

Month	2013		2012		2011		% Change 2013 - 2012		% Change 2012 - 2011	
	Count	Weight	Count	Weight	Count	Weight	Count	Weight	Count	Weight
January	4,176	469,844,487	4,033	441,029,354	4,214	463,934,037	3.55%	6.53%	-4.30%	-4.94%
February	3,824	428,117,442	3,892	432,535,353	3,776	417,430,253	-1.75%	-1.02%	3.07%	3.62%
March	4,660	536,989,561	4,372	496,635,886	4,539	498,238,970	6.59%	8.13%	-3.68%	-0.32%
April			4,260	479,535,174	4,274	479,035,366			-0.33%	0.10%
May			4,385	509,470,460	4,564	500,806,412			-3.92%	1.73%
June			4,425	503,932,220	4,378	490,983,485			1.07%	2.64%
July			4,586	524,142,423	4,499	504,634,624			1.93%	3.87%
August			4,532	519,056,485	4,415	499,285,697			2.65%	3.96%
September			4,181	484,324,879	4,226	477,495,780			-1.06%	1.43%
October			4,424	512,451,397	4,309	490,427,499			2.67%	4.49%
November			4,283	504,246,217	4,078	460,449,178			5.03%	9.51%
December			4,391	498,622,124	4,234	473,997,984			3.71%	5.19%
<b>Totals for Selected Period</b>	12,660	1,434,951,490	12,297	1,370,200,593	12,529	1,379,603,260	2.95%	4.73%	-1.85%	-0.68%
<b>Yearly Totals</b>	12,660	1,434,951,490	51,764	5,905,981,972	51,506	5,756,719,285			0.50%	2.59%