

# Austin-Bergstrom International Airport

## Aviation Activity Report

### Calendar Year 2014 vs 2013

	11/2014	11/2013	Percent Change	01/2014 - 11/2014	01/2013 - 11/2013	Percent Change
<b><u>Passenger Activity</u></b>						
Domestic Enplaned Revenue	429,679	411,163	4.50	4,720,795	4,437,379	6.39
Domestic Deplaned Revenue	417,733	406,891	2.66	4,709,186	4,460,993	5.56
International Enplaned Revenue	9,192	3,201	187.16	71,457	23,110	209.20
International Deplaned Revenue	7,765	2,828	174.58	71,932	25,683	180.08
Domestic Enplaned Non-Revenue	9,404	8,885	5.84	116,620	113,602	2.66
Domestic Deplaned Non-Revenue	9,249	8,133	13.72	108,301	99,885	8.43
International Enplaned Non-Revenue	78	29	168.97	892	129	591.47
International Deplaned Non-Revenue	97	55	76.36	857	220	289.55
Passenger Totals	883,197	841,185	4.99	9,800,040	9,161,001	6.98

**CURRENT PASSENGER RECORD = 1,006,417 RECORD SET = JULY 2014**

#### **Aircraft Operations**

Air Carrier	8,691	8,437	3.01	95,995	93,358	2.82
Commuter & Air Taxi	1,590	1,846	-13.87	15,660	15,852	-1.21
Military	315	450	-30.00	6,641	5,616	18.25
General Aviation						
Itinerant	4,731	4,407	7.35	46,997	45,603	3.06
Local	174	142	22.54	2,290	2,228	2.78
Total G.A.	4,905	4,549	7.83	49,287	47,831	3.04
Total Operations	15,501	15,282	1.43	167,583	162,657	3.03

# Austin-Bergstrom International Airport

## Aviation Activity Report

### Calendar Year 2014 vs 2013

	11/2014	11/2013	Percent Change	01/2014 - 11/2014	01/2013 - 11/2013	Percent Change
<b><u>Cargo Activity</u></b>						
Mail						
Domestic Enplaned Mail	146,280	137,313	6.53	1,393,681	1,258,351	10.75
Domestic Deplaned Mail	216,570	185,971	16.45	1,846,059	1,847,058	-0.05
International Enplaned Mail	508,099	0	0.00	1,103,232	0	0.00
International Deplaned Mail	0	0	0.00	0	2,404	-100.00
Mail Totals	870,949	323,284	169.41	4,342,972	3,107,813	39.74
Cargo						
Domestic Enplaned Cargo	5,458,696	5,029,312	8.54	54,232,409	57,034,601	-4.91
Domestic Deplaned Cargo	4,805,639	5,963,622	-19.42	58,120,120	65,064,268	-10.67
International Enplaned Cargo	954,473	1,491,966	-36.03	5,311,675	6,092,875	-12.82
International Deplaned Cargo	173,528	1,424,187	-87.82	3,945,496	5,848,032	-32.53
Cargo Totals	11,392,336	13,909,087	-18.09	121,609,700	134,039,776	-9.27
Belly Freight						
Domestic Enplaned Belly Freight	220,156	245,099	-10.18	2,460,247	3,100,554	-20.65
Domestic Deplaned Belly Freight	427,205	448,238	-4.69	4,578,163	4,716,768	-2.94
International Enplaned Belly Freight	375,333	0	0.00	4,307,231	0	0.00
International Deplaned Belly Freight	0	0	0.00	3,837,406	0	0.00
Belly Freight Totals	1,022,694	693,337	47.50	15,183,047	7,817,322	94.22
Cargo Totals (Mail, Cargo, Belly Freight)	13,285,979	14,925,708	-10.99	141,135,719	144,964,911	-2.64

CURRENT CARGO RECORD = 40,215,518

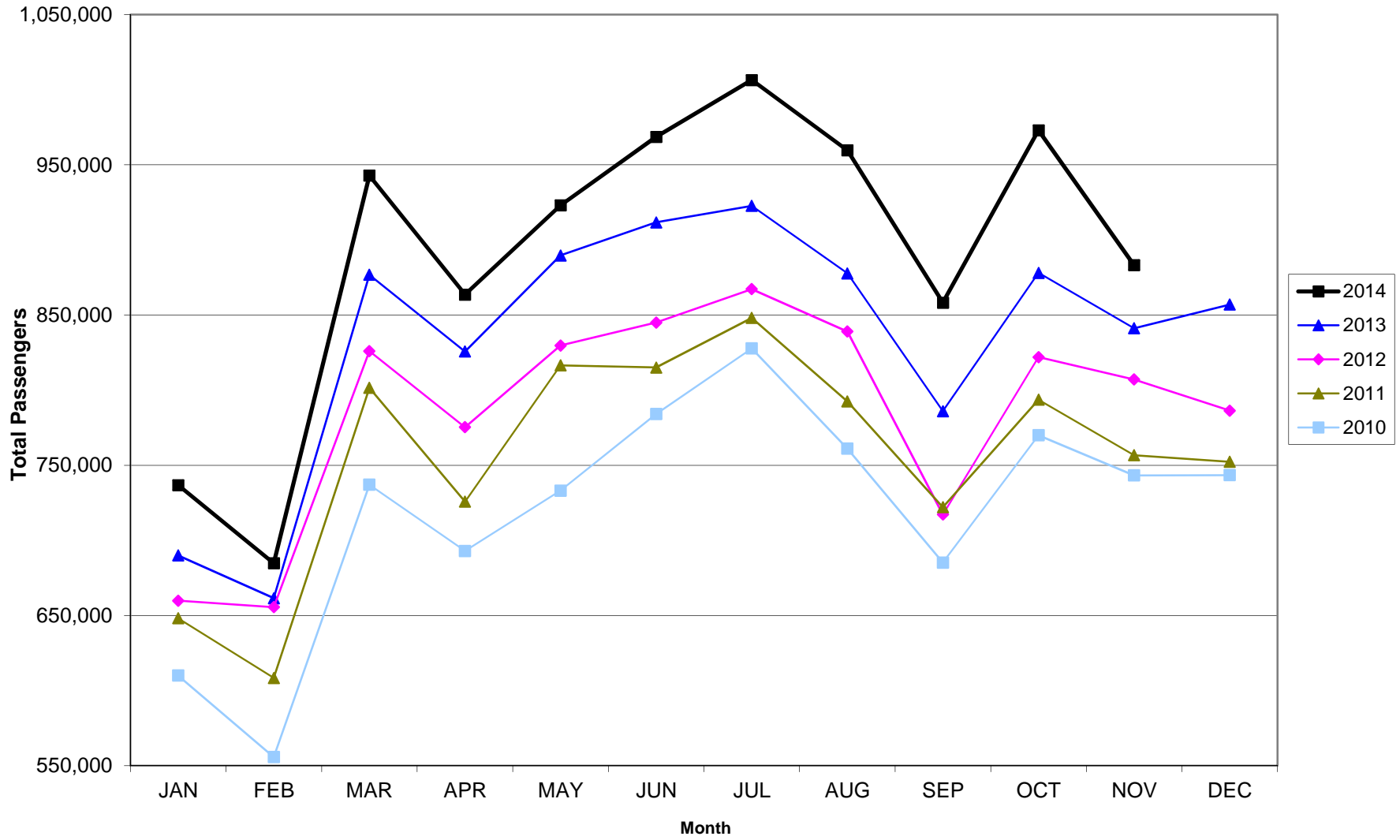
RECORD SET = MARCH 2001

## AUS – Airline Codes

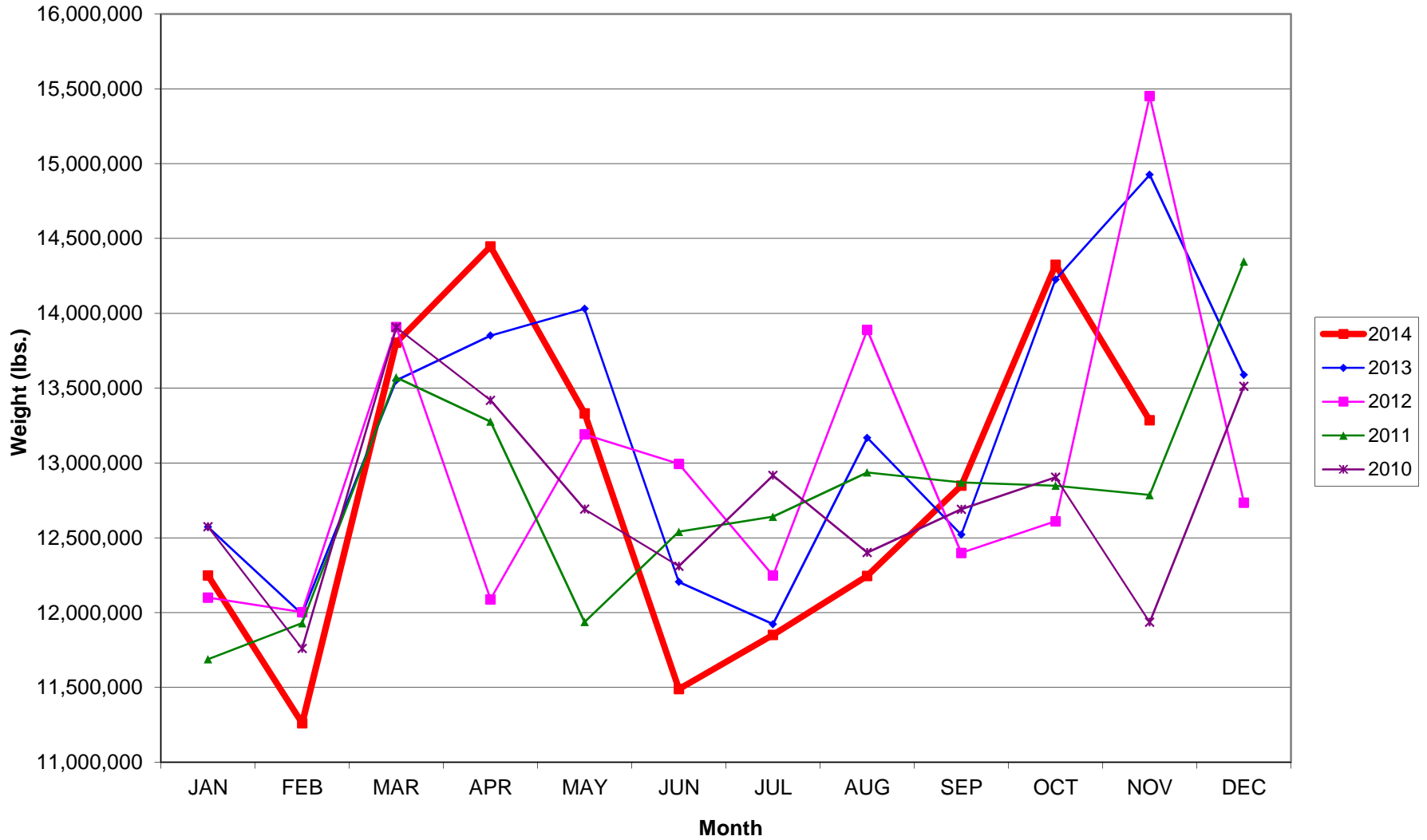
November 2014

<u>Code</u>	<u>Carrier</u>
AM	Aeromexico Airlines/Aerovias de Mexico, S.A. de C.V
AS	Alaska Airlines, Inc.
G4	Allegiant Air, LLC
AA	American Airlines, Inc.
BA	British Airways Plc
DL	Delta Airlines
F9	Frontier Airlines
B6	JetBlue Airways Corp.
OY	Omni Air International
P1	Public Charters, Inc. dba Texas Sky
WN	Southwest Airlines
SY	Sun Country Airlines/ MN Airlines, LLC
VW	Transportes Aeromar S.A. de C.V.
UA	United Airlines, Inc.
US	US Airways Group, Inc.
VX	Virgin America Inc.

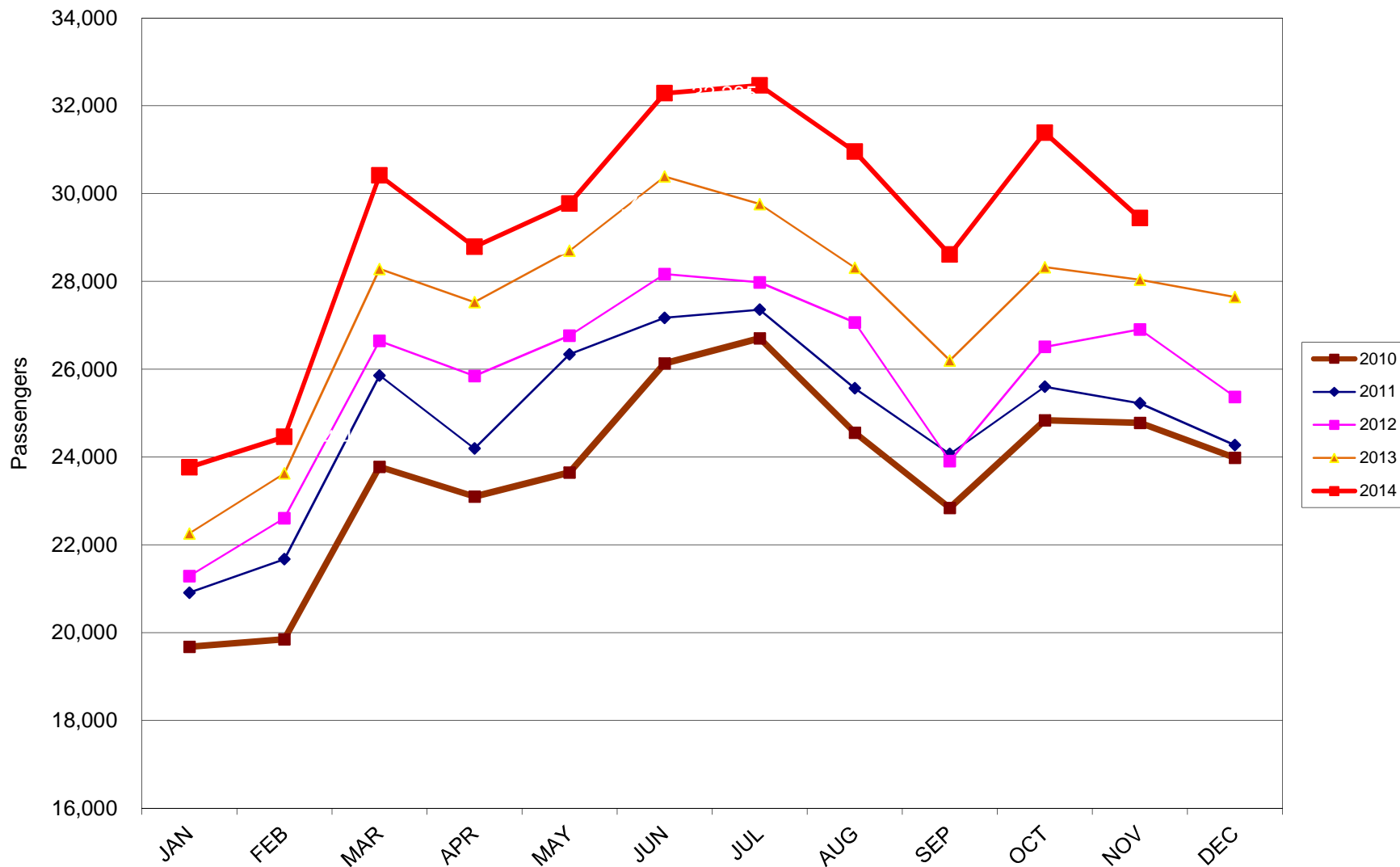
### AUSTIN PASSENGER TRAFFIC 5 Year Trend



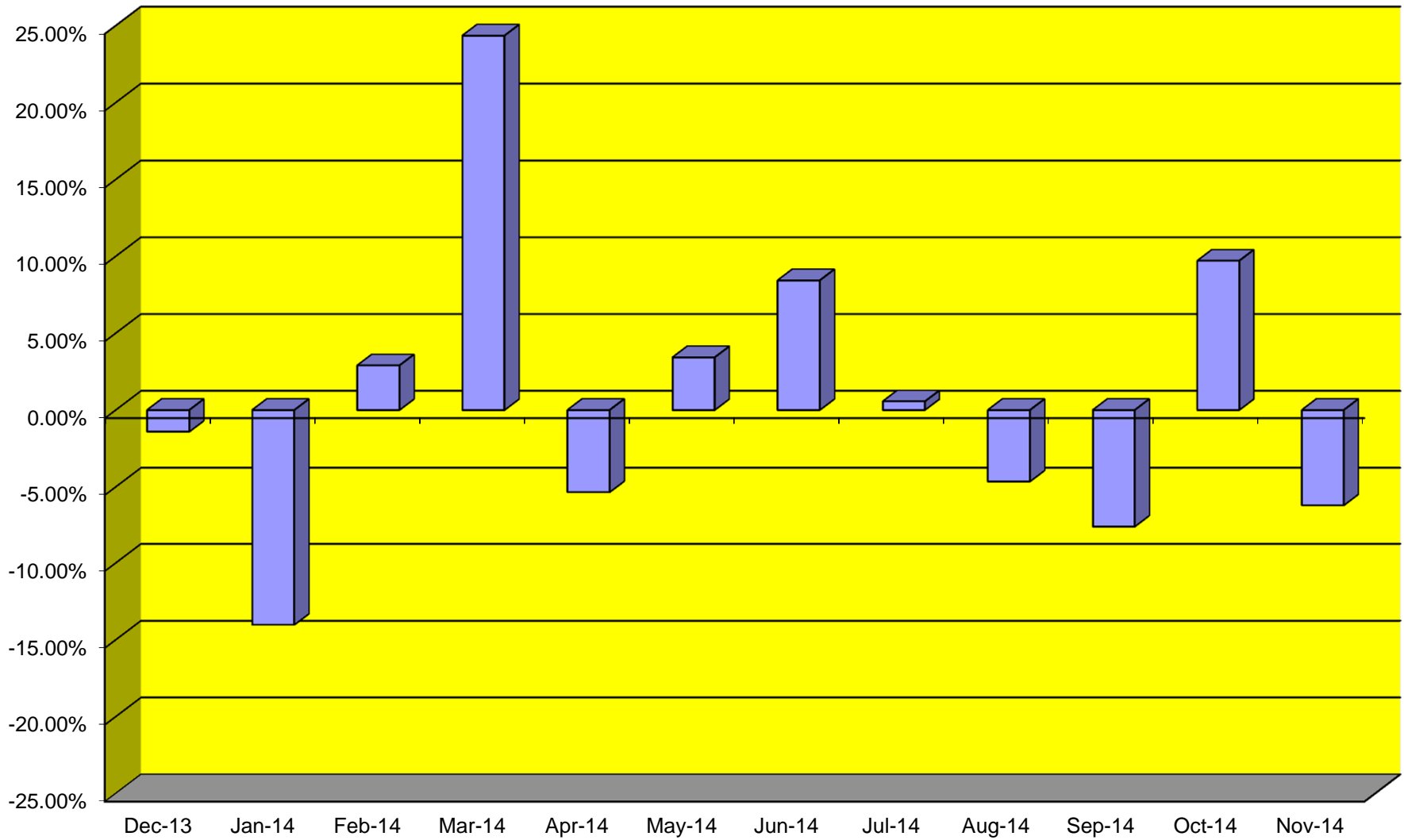
### TOTAL CARGO POUNDAGE - AUSTIN, TEXAS



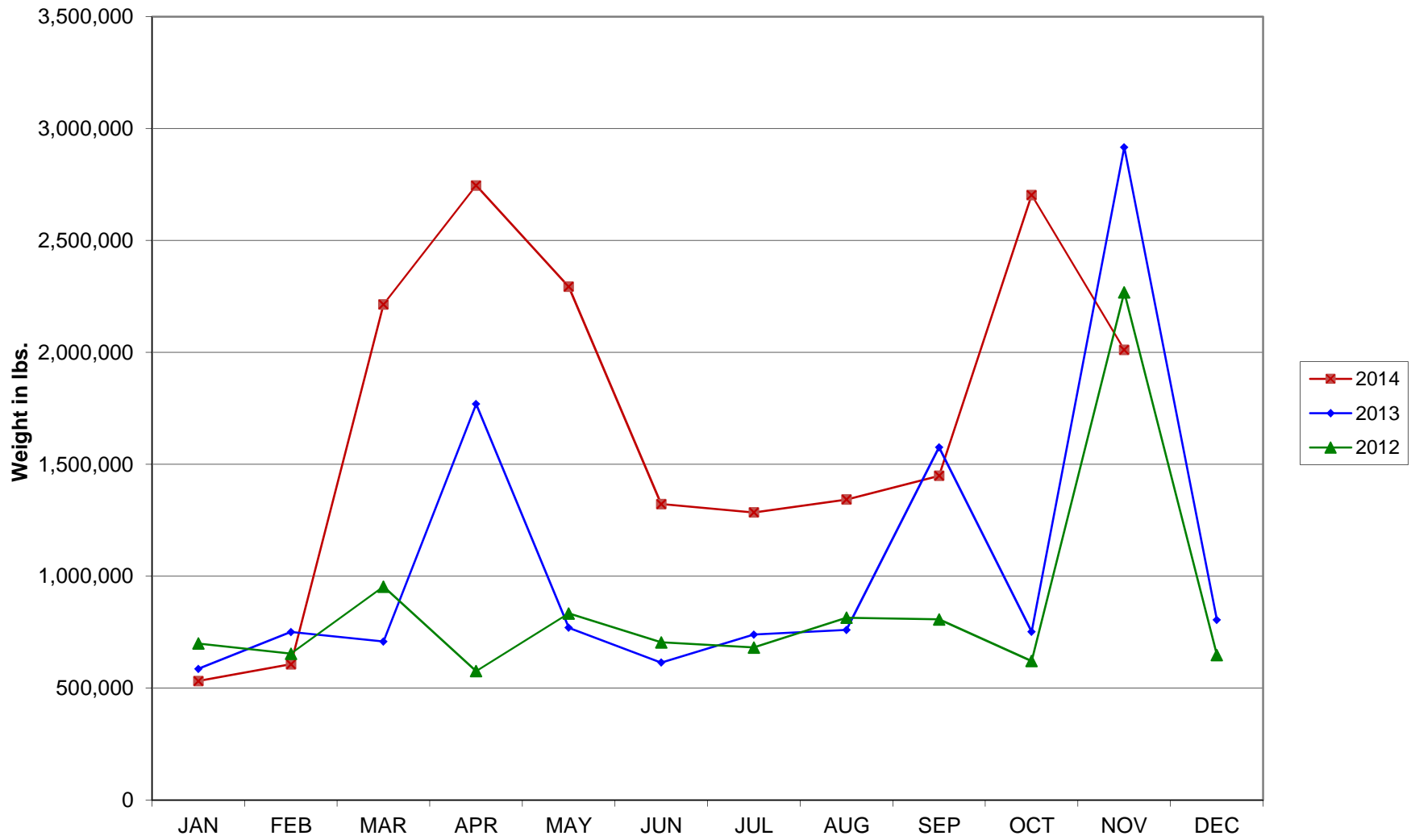
Average Daily Passengers



**Monthly % Change in Average Daily Passengers**

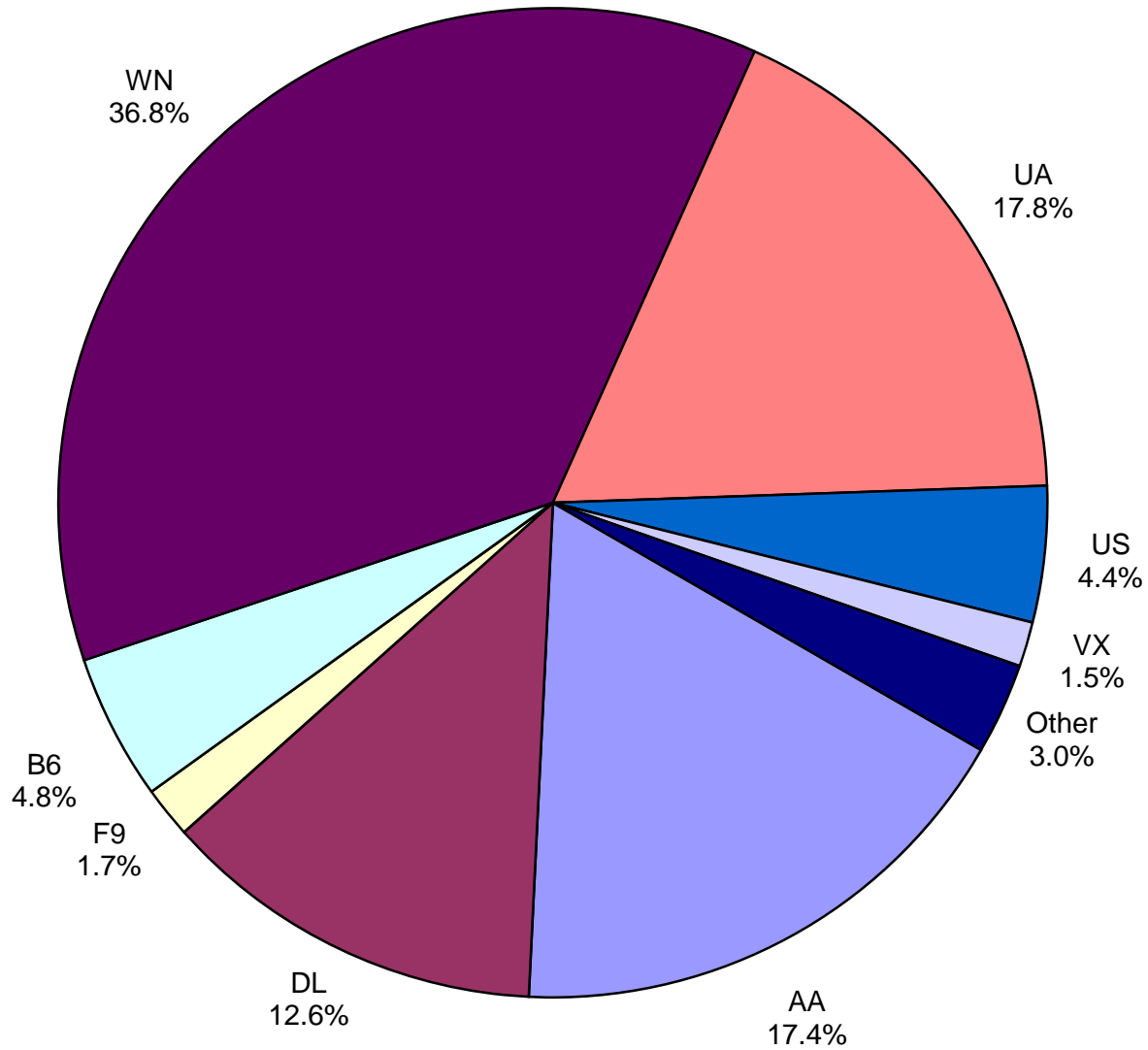


### History of International Air Cargo





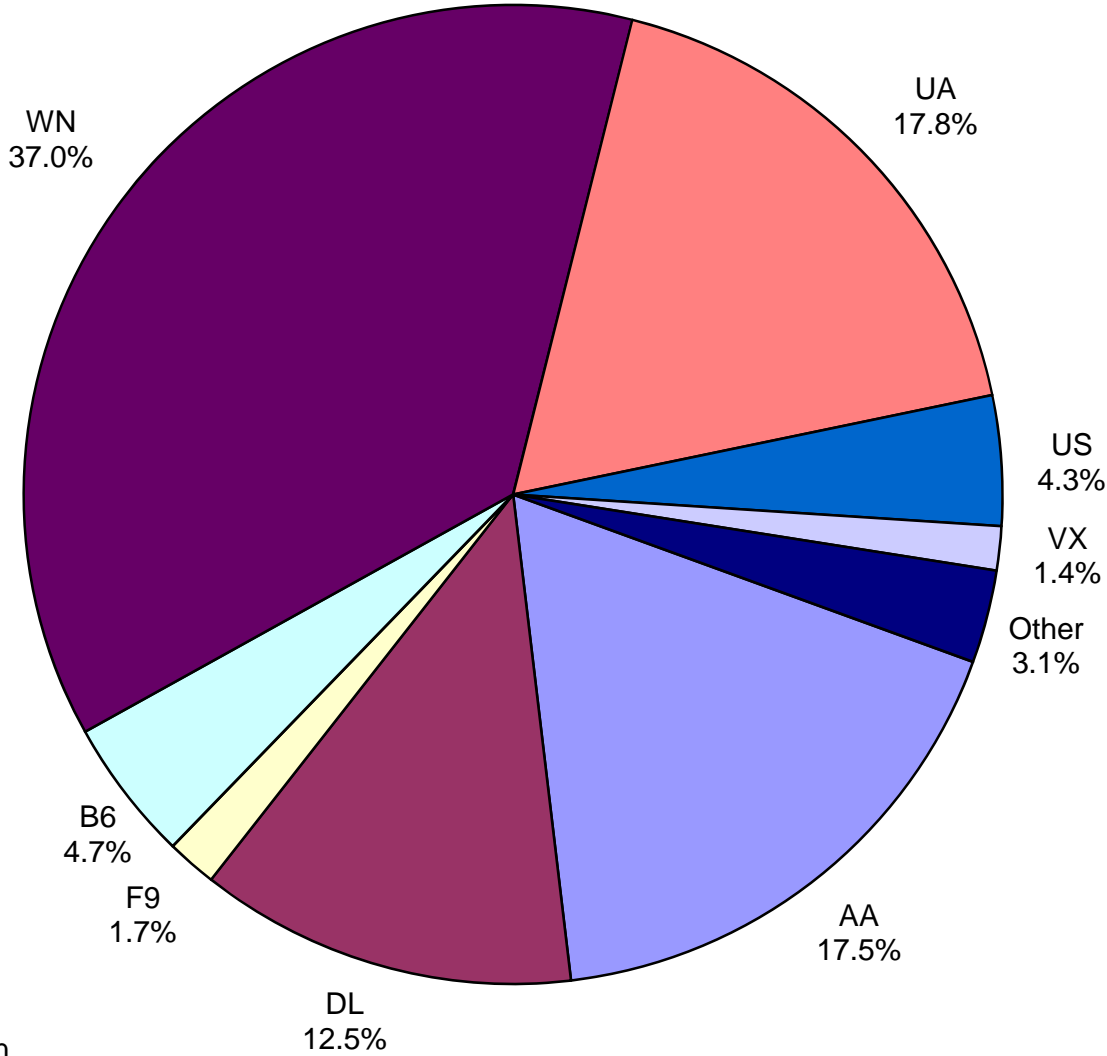
**Total Passengers  
November 2014**



**Other:** Aeromar, Aeromexico, Alaska, Allegiant, British Airways, Omni Air Int'l, Public Charters and Sun Country

**Note:** Delta, United Airlines and US Airways percentages include Affiliates.

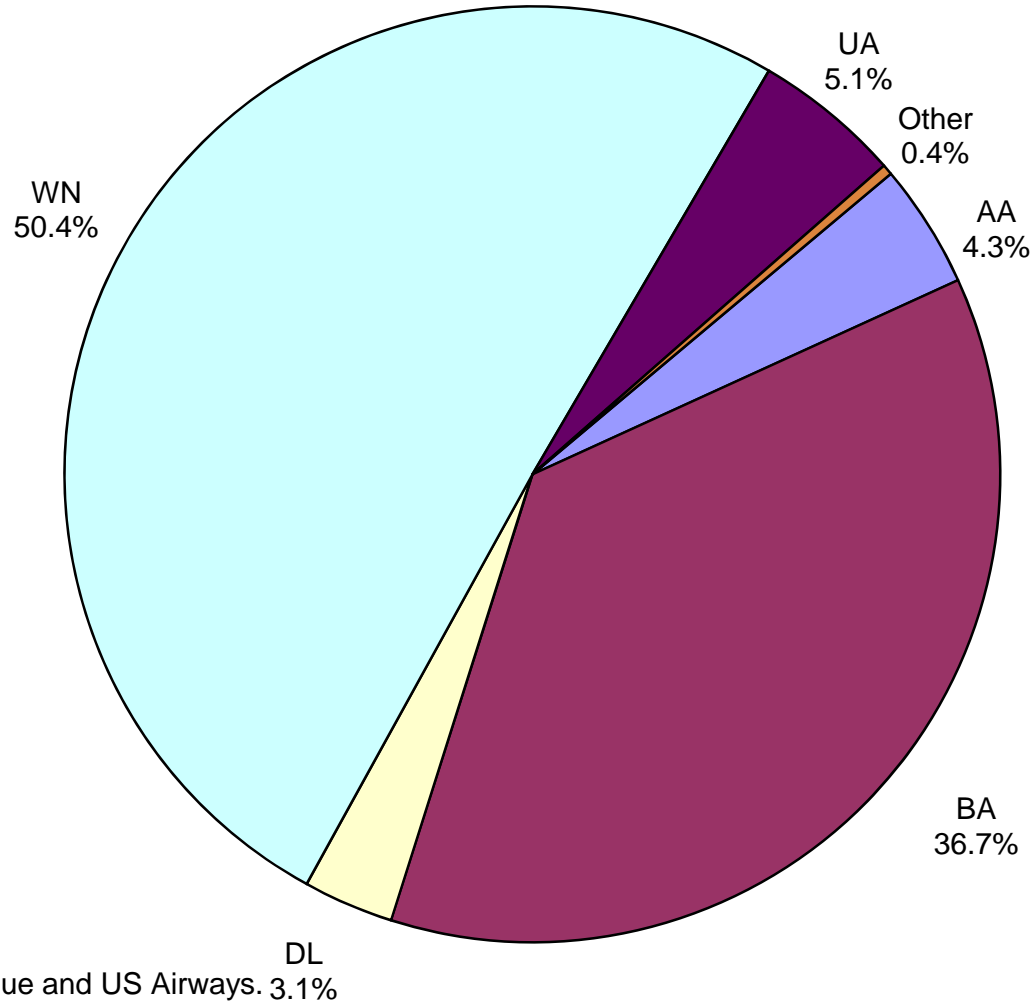
**All Passenger Carriers  
Enplaned Revenue Passengers  
November 2014**



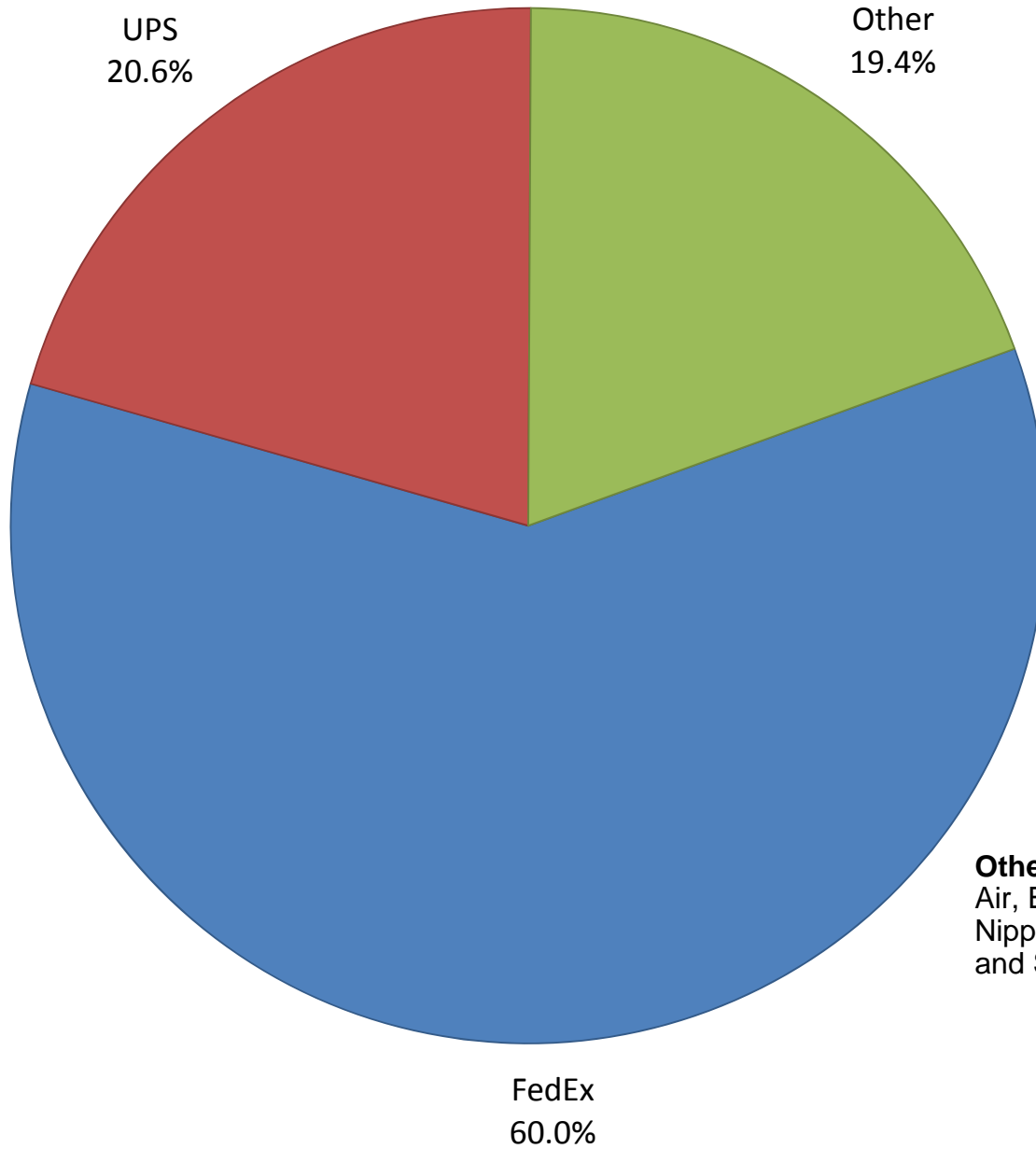
**Other:** Aeromar, Aeromexico, Alaska, Allegiant Air, British Airways, Omni Air Int'l., Public Charters and Sun Country

**Note:** Delta, United Airlines and US Airways percentages include Affiliates.

AUS Belly Freight Market Shares  
November 2014

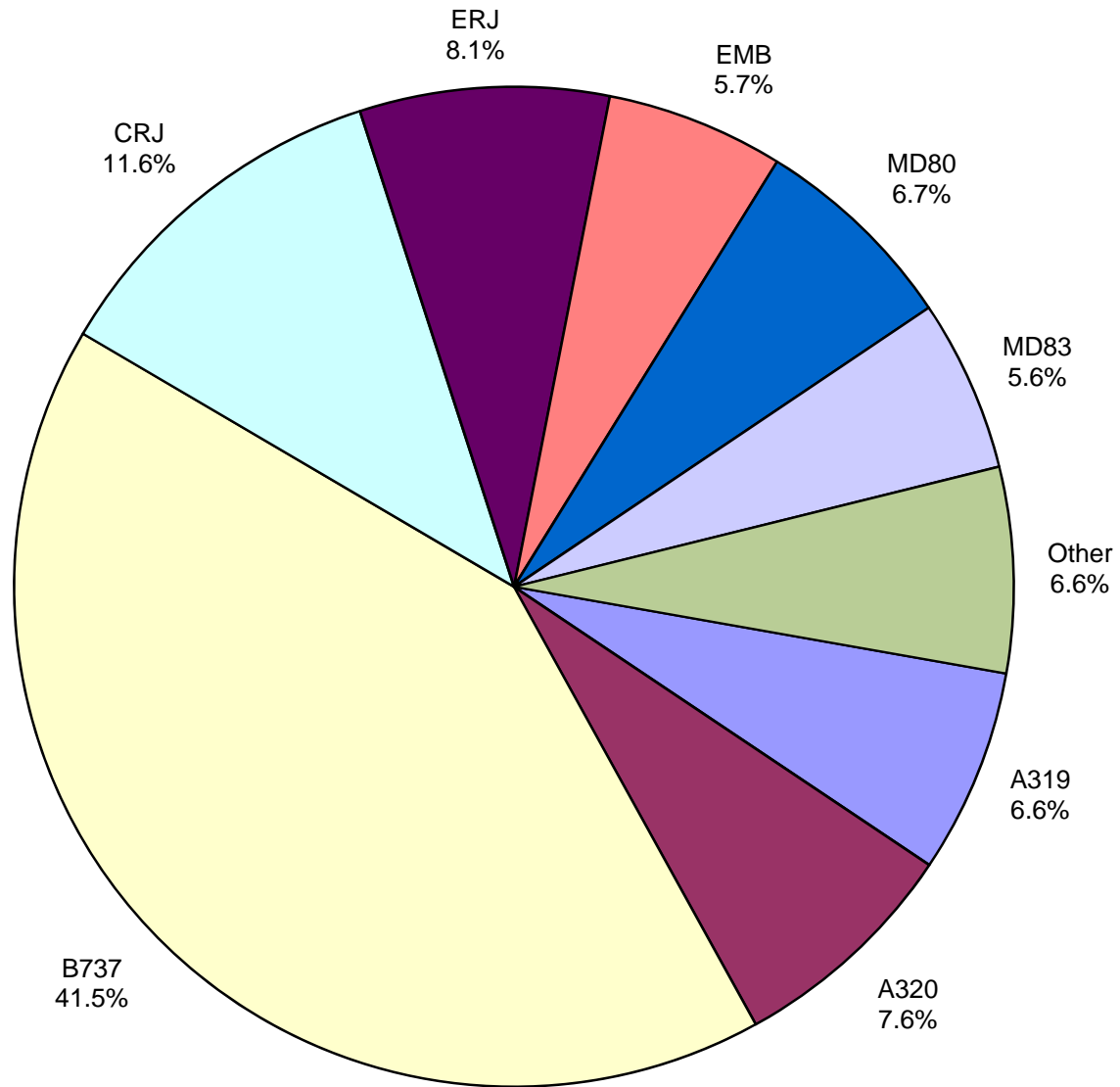


# Air Cargo Market Shares November 2014



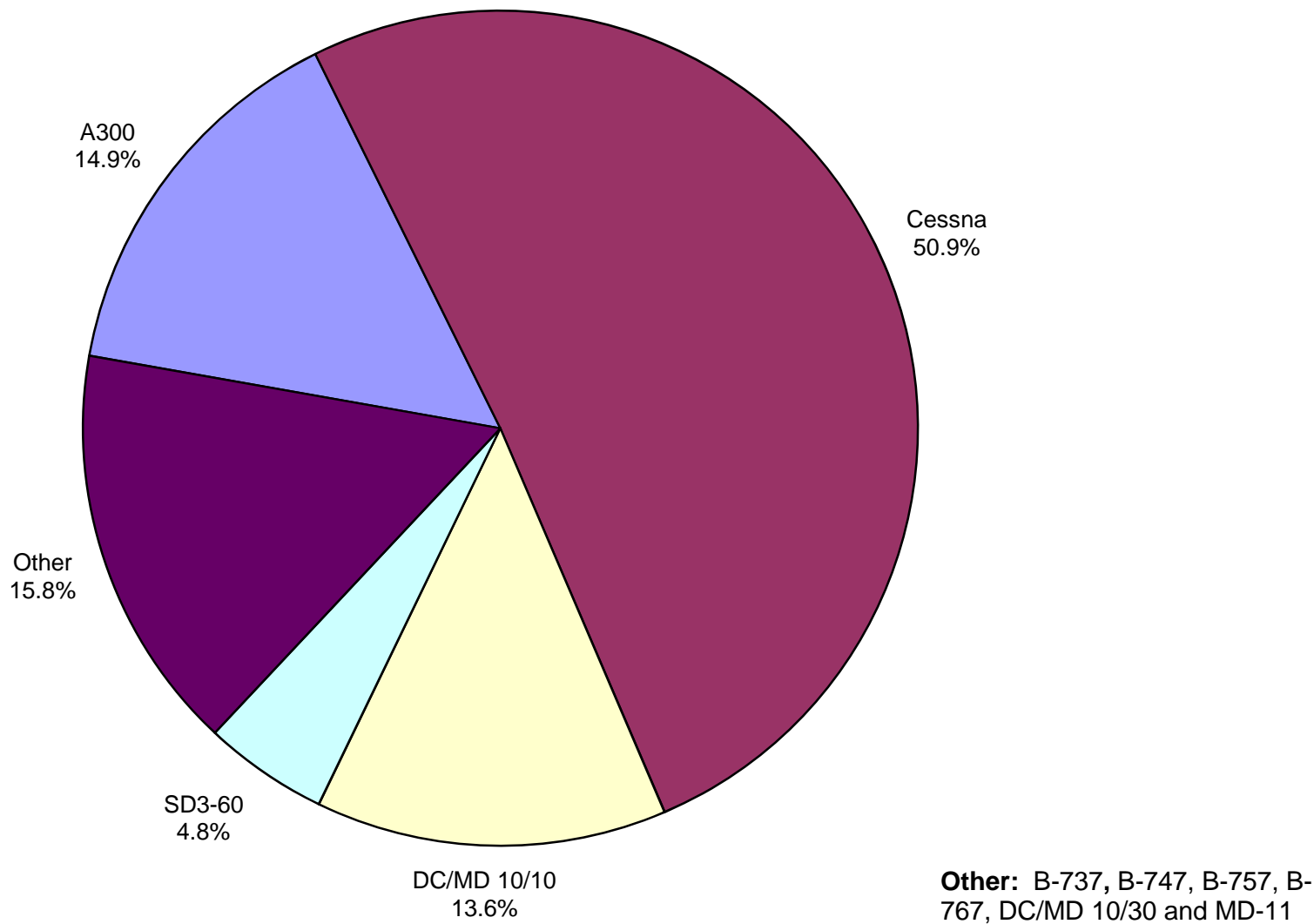
**Other:** ABX Air, Air Cargo Carriers , Atlas Air, Baron Aviation, Emirates Sky Cargo, Nippon Cargo, Singapore Airlines Cargo and Southern Air

**AUS Scheduled Passenger Aircraft Fleet Mix  
November 2014**



**Other:** B-757, B-767, B-787, BAE-3200 and MD-90

**AUS Scheduled Cargo Aircraft Fleet Mix  
November 2014**



# Austin-Bergstrom International Airport

## PAX Detail Report - November, 2014

Period Company	11/2014	11/2013	YTD		YTD 2014	YTD 2013	2014		2013 Share	Share Share	Diff
			Difference	Change			Difference	Change			
AeroMexico Airlines/Aerovias de Mexico, S.A. de C.V.	243	638	-395	-61.9	434	638	-204	-32.0	0.0	0.0	0.0
Alaska Airlines, Inc.	9,935	9,529	406	4.3	106,279	105,157	1,122	1.1	1.1	1.1	-0.1
Allegiant Air Charter	0	0	0	0.0	0	1,520	-1,520	-100.0	0.0	0.0	0.0
Allegiant Air, LLC	5,906	5,223	683	13.1	64,681	5,491	59,190	1,077.9	0.7	0.1	0.6
American Airlines, Inc.	154,036	150,531	3,505	2.3	1,766,998	1,703,857	63,141	3.7	18.0	18.6	-0.6
Ameristarjet Charter Inc.	0	0	0	0.0	10	96	-86	-89.6	0.0	0.0	0.0
British Airways Plc	8,595	0	8,595	0.0	87,759	0	87,759	0.0	0.9	0.0	0.9
Canadian North, Inc.	0	0	0	0.0	49	0	49	0.0	0.0	0.0	0.0
Continental Airlines	0	0	0	0.0	0	103,392	-103,392	-100.0	0.0	1.1	-1.1
Delta Air Lines	111,440	97,971	13,469	13.7	1,222,867	1,104,770	118,097	10.7	12.5	12.1	0.4
Express Jet Airlines, Inc.	0	0	0	0.0	0	46,979	-46,979	-100.0	0.0	0.5	-0.5
Frontier Airlines, Inc.	14,842	17,163	-2,321	-13.5	173,296	149,455	23,841	16.0	1.8	1.6	0.1
GoJet Airlines d/b/a United Express	0	0	0	0.0	0	139,517	-139,517	-100.0	0.0	1.5	-1.5
JetBlue Airways Corporation	42,116	47,238	-5,122	-10.8	542,263	588,122	-45,859	-7.8	5.5	6.4	-0.9
Mesa Airlines Inc - DIP	0	0	0	0.0	0	288,544	-288,544	-100.0	0.0	3.1	-3.1
Miami Air International Inc.	0	676	-676	-100.0	226	1,018	-792	-77.8	0.0	0.0	0.0
North American Airlines/World Airways	0	192	-192	-100.0	0	192	-192	-100.0	0.0	0.0	0.0
Omni Air International	190	0	190	0.0	190	0	190	0.0	0.0	0.0	0.0
Public Charters, Inc., d/b/a Texas Sky	208	0	208	0.0	208	0	208	0.0	0.0	0.0	0.0
Republic Airlines, Inc.	0	189	-189	-100.0	1,238	1,890	-652	-34.5	0.0	0.0	0.0
Shuttle America Corporation	0	0	0	0.0	0	85,595	-85,595	-100.0	0.0	0.9	-0.9
SkyWest Airlines, Inc	0	0	0	0.0	0	346,353	-346,353	-100.0	0.0	3.8	-3.8
Southwest Airlines	325,426	323,302	2,124	0.7	3,653,853	3,556,995	96,858	2.7	37.3	38.8	-1.5
Sun Country Airlines/ MN Airlines, LLC	382	165	217	131.5	1,440	1,096	344	31.4	0.0	0.0	0.0
Transportes Aeromar S.A. de C.V.	870	969	-99	-10.2	9,307	1,148	8,159	710.7	0.1	0.0	0.1
United Airlines, Inc.	156,874	142,774	14,100	9.9	1,624,589	708,975	915,614	129.1	16.6	7.7	8.8
US Airways Group, Inc.	39,253	38,137	1,116	2.9	446,251	173,787	272,464	156.8	4.6	1.9	2.7
Virgin America Inc.	12,881	6,230	6,651	106.8	97,150	44,810	52,340	116.8	1.0	0.5	0.5
Vision Airlines, Inc.	0	258	-258	-100.0	952	1,440	-488	-33.9	0.0	0.0	0.0
World Atlantic Airlines	0	0	0	0.0	0	164	-164	-100.0	0.0	0.0	0.0
<b>Report Totals</b>	<b>883,197</b>	<b>841,185</b>	<b>42,012</b>	<b>5.0%</b>	<b>9,800,040</b>	<b>9,161,001</b>	<b>639,039</b>	<b>7.0%</b>			

### Statistics Included in Report:

Domestic Passengers: Enplaned Revenue, Deplaned Revenue, Enplaned Non-Revenue, Deplaned Non-Revenue  
International Passengers: Enplaned Revenue, Deplaned Revenue, Enplaned Non-Revenue, Deplaned Non-Revenue

# Austin-Bergstrom International Airport

## Summary Landing Report

### Landing Type: Total

Month	2014		2013		2012		% Change 2014 - 2013		% Change 2013 - 2012	
	Count	Weight	Count	Weight	Count	Weight	Count	Weight	Count	Weight
January	4,213	478,945,673	4,176	469,844,487	4,033	441,029,354	0.89%	1.94%	3.55%	6.53%
February	3,839	437,160,505	3,824	428,117,442	3,892	432,535,353	0.39%	2.11%	-1.75%	-1.02%
March	4,746	552,992,572	4,660	536,989,561	4,372	496,635,886	1.85%	2.98%	6.59%	8.13%
April	4,515	521,133,372	4,425	504,739,959	4,260	479,535,174	2.03%	3.25%	3.87%	5.26%
May	4,749	553,415,664	4,687	545,881,910	4,385	509,470,460	1.32%	1.38%	6.89%	7.15%
June	4,821	569,196,868	4,680	534,286,437	4,425	503,932,220	3.01%	6.53%	5.76%	6.02%
July	5,000	590,375,055	4,788	547,957,989	4,586	524,142,423	4.43%	7.74%	4.40%	4.54%
August	4,752	555,732,827	4,737	541,522,098	4,532	519,056,485	0.32%	2.62%	4.52%	4.33%
September	4,513	539,605,431	4,320	497,853,836	4,181	484,324,879	4.47%	8.39%	3.32%	2.79%
October	4,842	589,981,037	4,613	540,694,783	4,424	512,451,397	4.96%	9.12%	4.27%	5.51%
November	4,532	546,643,220	4,448	517,542,366	4,283	504,246,217	1.89%	5.62%	3.85%	2.64%
December			4,534	521,172,463	4,391	498,622,124			3.26%	4.52%
<b>Totals for Selected Period</b>	50,522	5,935,182,224	49,358	5,665,430,868	47,373	5,407,359,848	2.36%	4.76%	4.19%	4.77%
<b>Yearly Totals</b>	50,522	5,935,182,224	53,892	6,186,603,331	51,764	5,905,981,972			4.11%	4.75%