

Austin-Bergstrom International Airport

Aviation Activity Report

Calendar Year 2016 vs 2015

	11/2016	11/2015	Percent Change	01/2016 - 11/2016	01/2015 - 11/2015	Percent Change
Passenger Activity						
Domestic Enplaned Revenue	515,809	502,830	2.58	5,459,052	5,212,583	4.73
Domestic Deplaned Revenue	512,054	493,576	3.74	5,453,931	5,200,634	4.87
International Enplaned Revenue	9,733	8,913	9.20	100,838	100,034	0.80
International Deplaned Revenue	9,553	8,424	13.40	107,269	100,241	7.01
Domestic Enplaned Non-Revenue	9,921	9,661	2.69	120,634	117,125	3.00
Domestic Deplaned Non-Revenue	9,668	9,724	-0.58	120,445	114,458	5.23
International Enplaned Non-Revenue	88	92	-4.35	873	841	3.80
International Deplaned Non-Revenue	62	55	12.73	864	749	15.35
Intl Enplaned Pre-Cleared Revenue	1,747	1,289	35.53	18,116	9,188	97.17
Intl Deplaned Pre-Cleared Revenue	1,910	1,575	21.27	20,200	11,403	77.15
Intl Enplaned Pre-Cleared Non-Revenue	20	46	-56.52	278	453	-38.63
Intl Deplaned Pre-Cleared Non-Revenue	2	38	-94.74	282	447	-36.91
Passenger Totals	1,070,567	1,036,223	3.31	11,402,782	10,868,156	4.92
<i>Enplaned Passenger Totals</i>	<i>537,318</i>	<i>522,831</i>	<i>2.77</i>	<i>5,699,791</i>	<i>5,440,224</i>	<i>4.77</i>
<i>Deplaned Passenger Totals</i>	<i>533,249</i>	<i>513,392</i>	<i>3.87</i>	<i>5,702,991</i>	<i>5,427,932</i>	<i>5.07</i>
<i>Domestic Passenger Totals</i>	<i>1,047,452</i>	<i>1,015,791</i>	<i>3.12</i>	<i>11,154,062</i>	<i>10,644,800</i>	<i>4.78</i>
<i>International Passenger Totals</i>	<i>23,115</i>	<i>20,432</i>	<i>13.13</i>	<i>248,720</i>	<i>223,356</i>	<i>11.36</i>

CURRENT PASSENGER RECORD = 1,165,811 RECORD SET = JULY 2015

Aircraft Operations

Air Carrier	9,325	9,645	-3.32	103,887	104,218	-0.32
Commuter & Air Taxi	1,402	1,324	5.89	15,064	14,035	7.33
Military	741	572	29.55	9,751	7,998	21.92
General Aviation						
Itinerant	4,546	3,521	29.11	45,784	45,441	0.75
Local	322	168	91.67	2,566	3,597	-28.66
Total G.A.	4,868	3,689	31.96	48,350	49,038	-1.40
Total Operations	16,336	15,230	7.26	177,052	175,289	1.01

Austin-Bergstrom International Airport

Aviation Activity Report

Calendar Year 2016 vs 2015

	11/2016	11/2015	Percent Change	01/2016 - 11/2016	01/2015 - 11/2015	Percent Change
Cargo Activity						
Mail						
Domestic Enplaned Mail	164,473	222,644	-26.13	1,489,270	2,386,358	-37.59
Domestic Deplaned Mail	344,481	249,247	38.21	2,728,555	3,289,936	-17.06
International Enplaned Mail	0	0	0.00	0	0	0.00
International Deplaned Mail	0	0	0.00	2	0	0.00
Mail Totals	508,954	471,891	7.85	4,217,827	5,676,294	-25.69
Cargo						
Domestic Enplaned Cargo	5,732,847	4,475,442	28.10	57,199,278	57,065,570	0.23
Domestic Deplaned Cargo	6,764,319	4,771,440	41.77	72,196,015	54,826,379	31.68
International Enplaned Cargo	417,437	258,687	61.37	5,480,184	6,327,184	-13.39
International Deplaned Cargo	248,204	153,775	61.41	4,183,809	5,110,160	-18.13
Cargo Totals	13,162,807	9,659,344	36.27	139,059,286	123,329,293	12.75
Belly Freight						
Domestic Enplaned Belly Freight	257,885	244,799	5.35	2,655,380	2,763,844	-3.92
Domestic Deplaned Belly Freight	425,791	431,848	-1.40	5,042,560	5,184,926	-2.75
International Enplaned Belly Freight	156,015	241,549	-35.41	1,541,984	2,855,033	-45.99
International Deplaned Belly Freight	796,655	479,156	66.26	5,864,288	4,027,480	45.61
Belly Freight Totals	1,636,346	1,397,352	17.10	15,104,212	14,831,283	1.84
Cargo Totals (Mail, Cargo, Belly Freight)	15,308,107	11,528,587	32.78	158,381,325	143,836,870	10.11
<i>Enplaned Cargo Totals</i>	<i>6,728,657</i>	<i>5,443,121</i>	<i>23.62</i>	<i>68,366,096</i>	<i>71,397,989</i>	<i>-4.25</i>
<i>Deplaned Cargo Totals</i>	<i>8,579,450</i>	<i>6,085,466</i>	<i>40.98</i>	<i>90,015,229</i>	<i>72,438,881</i>	<i>24.26</i>
<i>Domestic Cargo Totals</i>	<i>13,689,796</i>	<i>10,395,420</i>	<i>31.69</i>	<i>141,311,058</i>	<i>125,517,013</i>	<i>12.58</i>
<i>International Cargo Totals</i>	<i>1,618,311</i>	<i>1,133,167</i>	<i>42.81</i>	<i>17,070,267</i>	<i>18,319,857</i>	<i>-6.82</i>

CURRENT CARGO RECORD = 40,215,518

RECORD SET = MARCH 2001

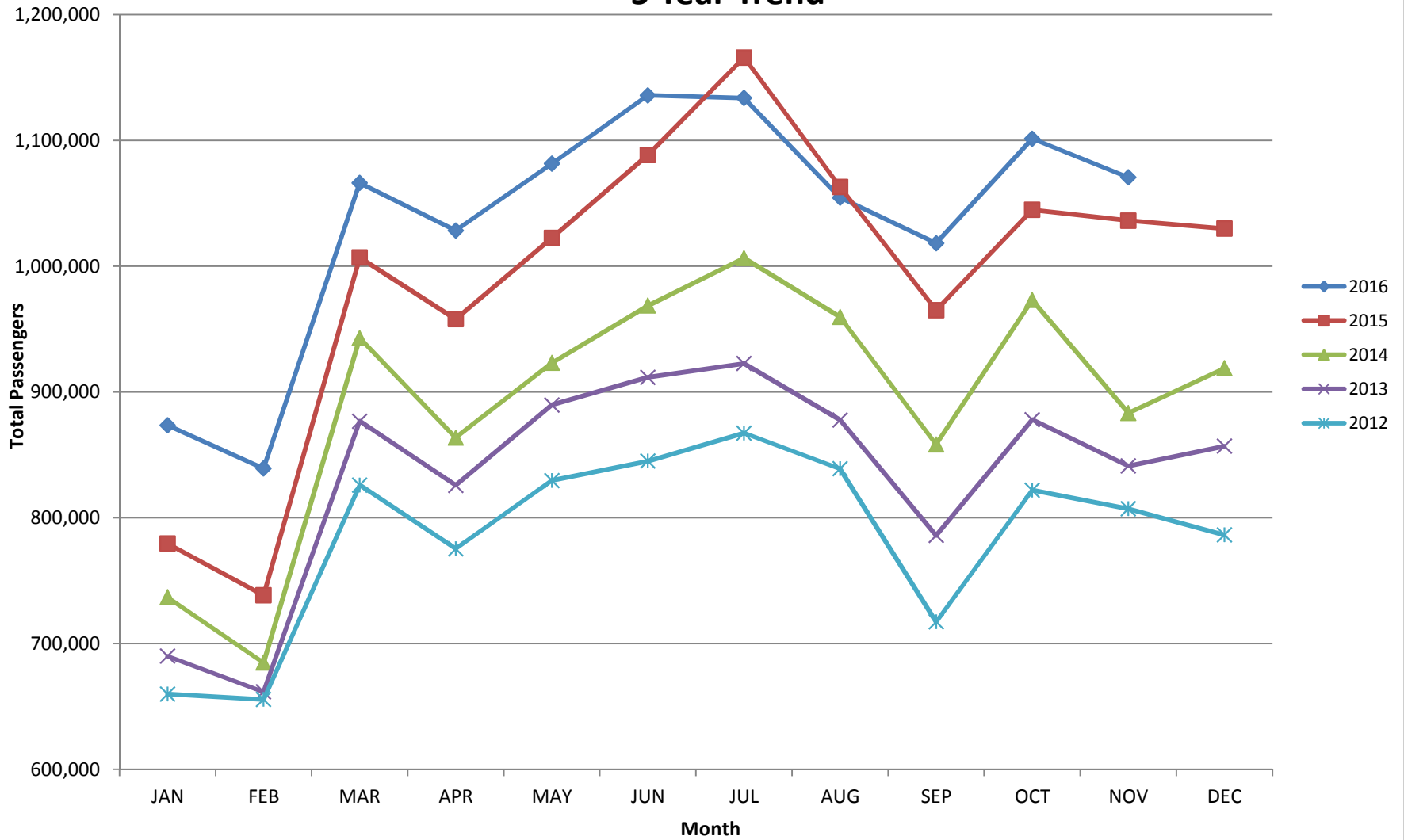
AUS – Airline Codes

November 2016

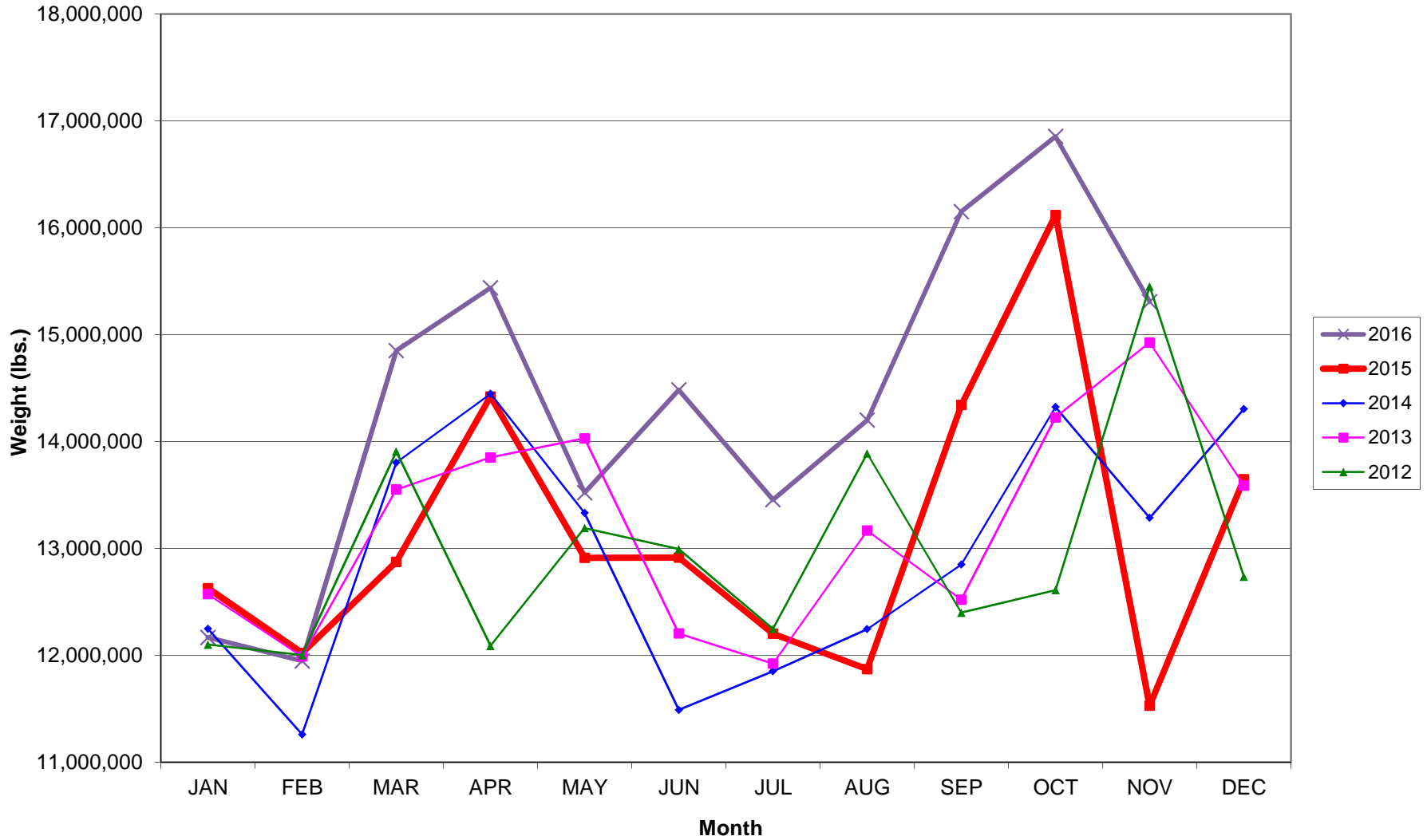
<u>Code</u>	<u>Carrier</u>
AM	AeroMexico Airlines
AC	Air Canada
AS	Alaska Airlines, Inc.
G4	Allegiant Air, LLC
AA	American Airlines, Inc.
BA	British Airways Plc
DL	Delta Airlines
EA	Eastern Airlines
F9	Frontier Airlines
B6	JetBlue Airways Corp.
LL	Miami Air International
P1	Public Charters, Inc. dba Texas Sky
WN	Southwest Airlines
SY	Sun Country Airlines/ MN Airlines, LLC
UA	United Airlines, Inc.
VX	Virgin America Inc.
Y4	Volaris/Concesionaria Vuela Compañía de Aviación, S.A.P.I. de C.V.
XP	Xtra Airways

AUSTIN PASSENGER TRAFFIC

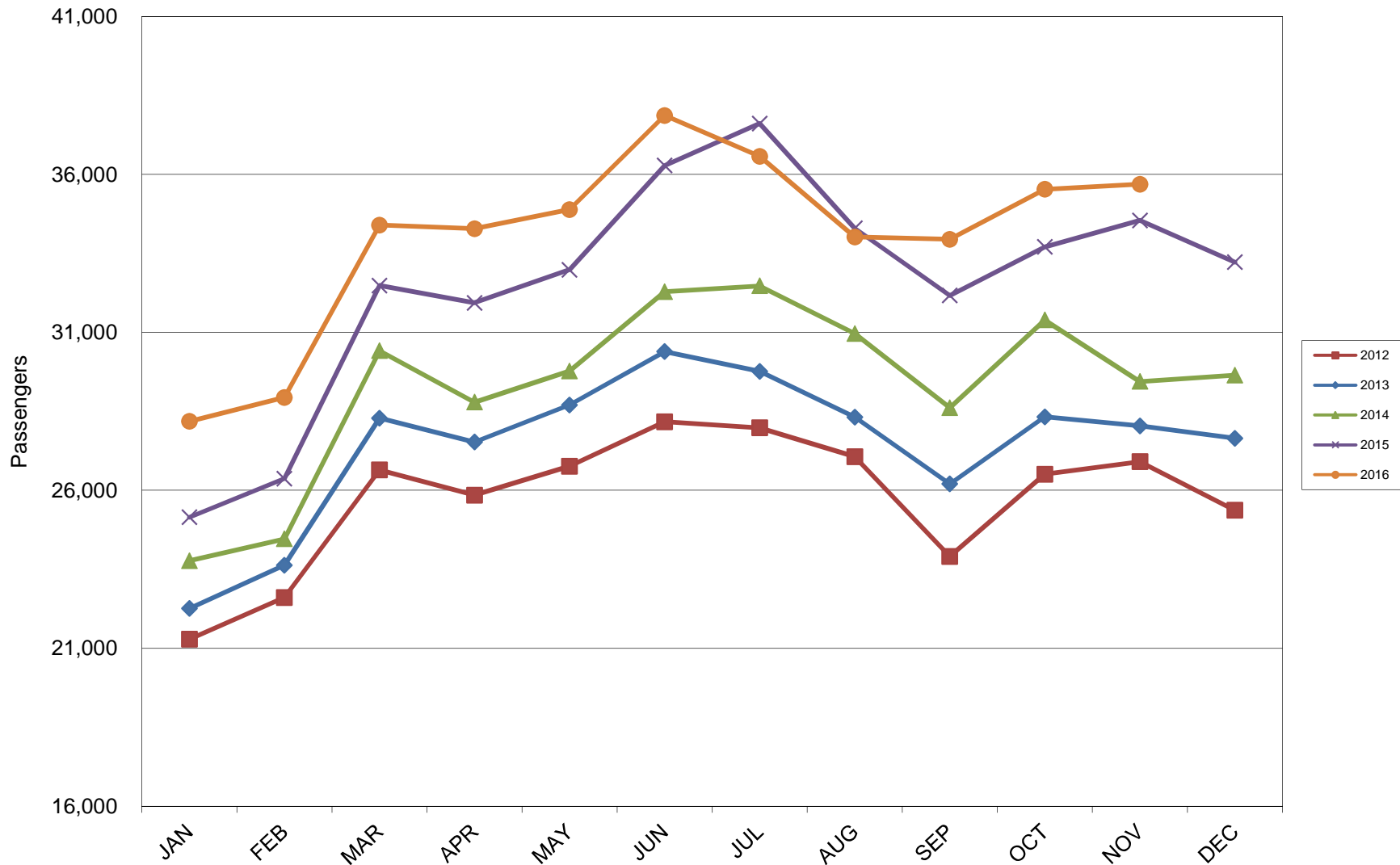
5 Year Trend



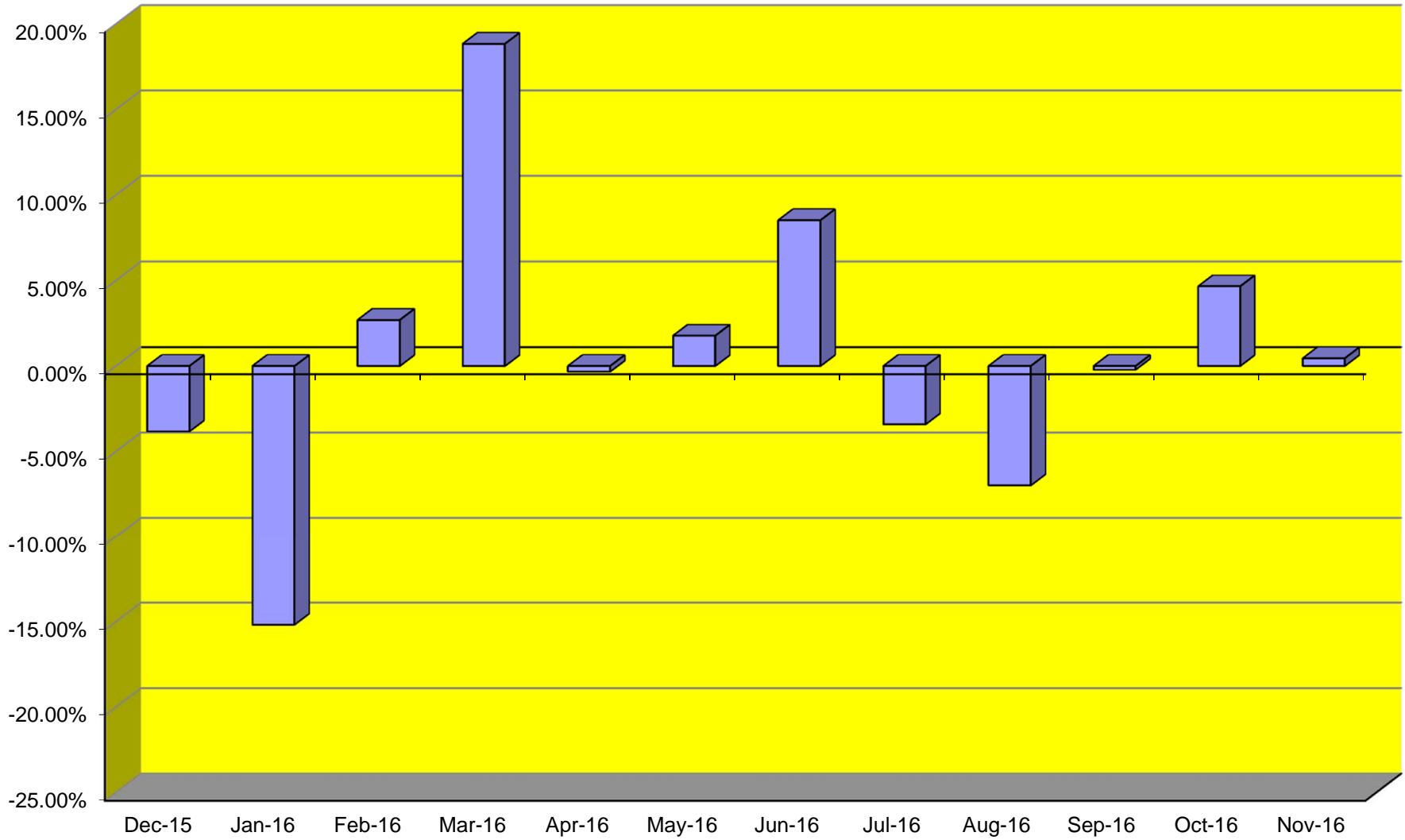
TOTAL CARGO POUNDAGE - AUSTIN, TEXAS



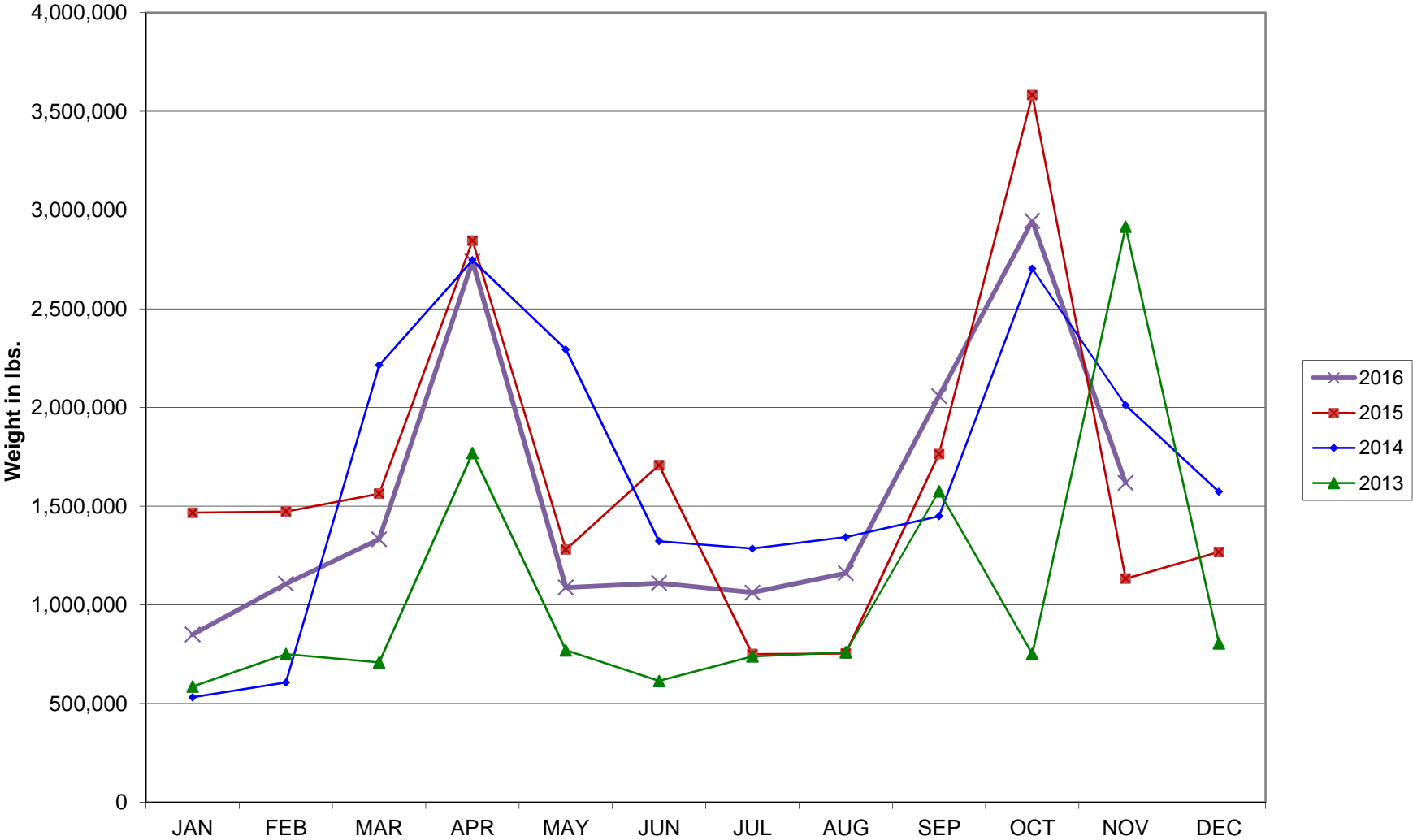
Average Daily Passengers



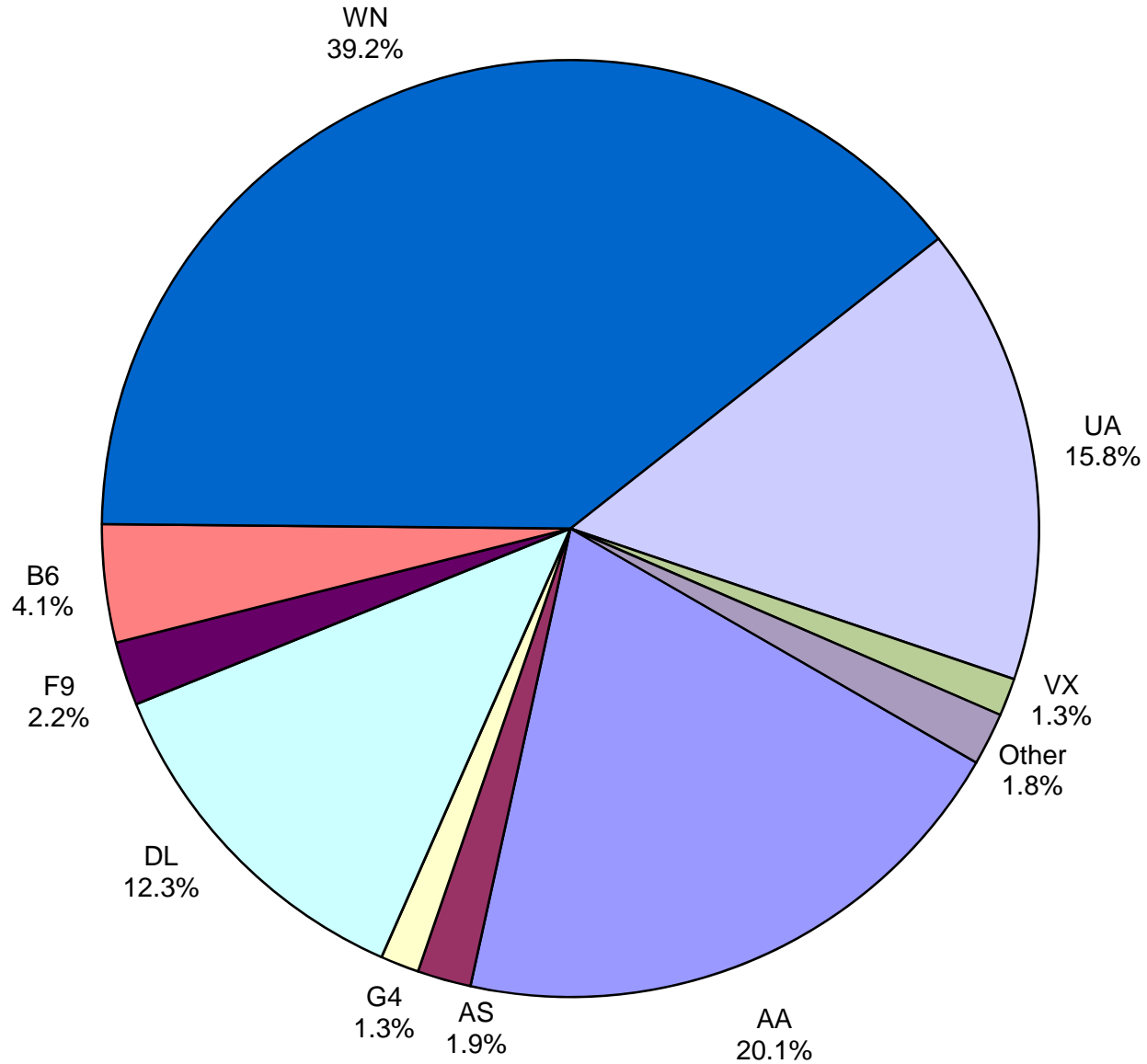
Monthly % Change in Average Daily Passengers



HISTORY OF INTERNATIONAL AIR CARGO



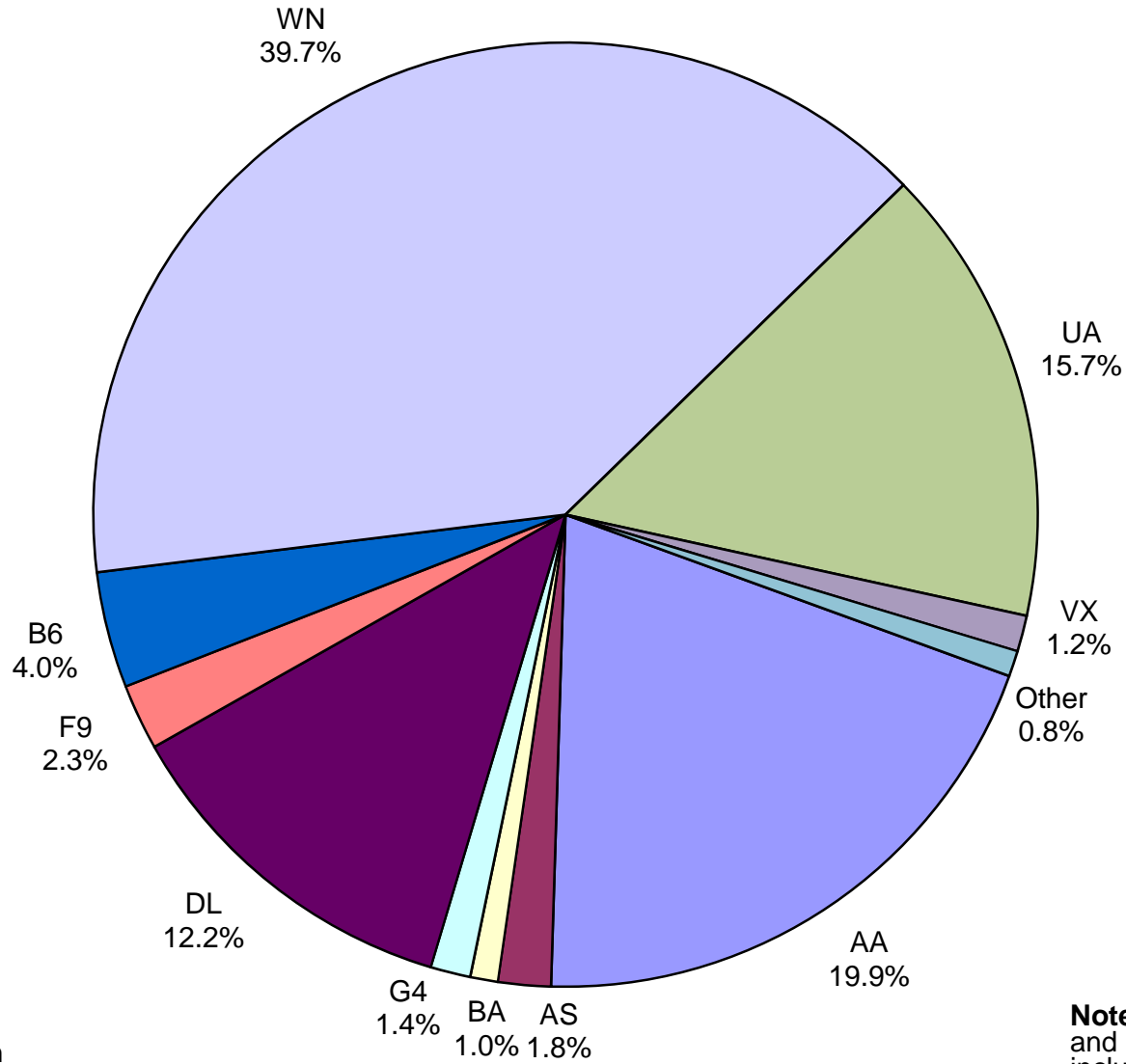
**Total Passengers
November 2016**



Other: Aeromexico, Air Canada, British Airways, Eastern Air Lines, Miami Air, Sun Country, Texas Sky, Volaris, Xtra Airways

Note: American, Delta and United Airlines percentages include Affiliates.

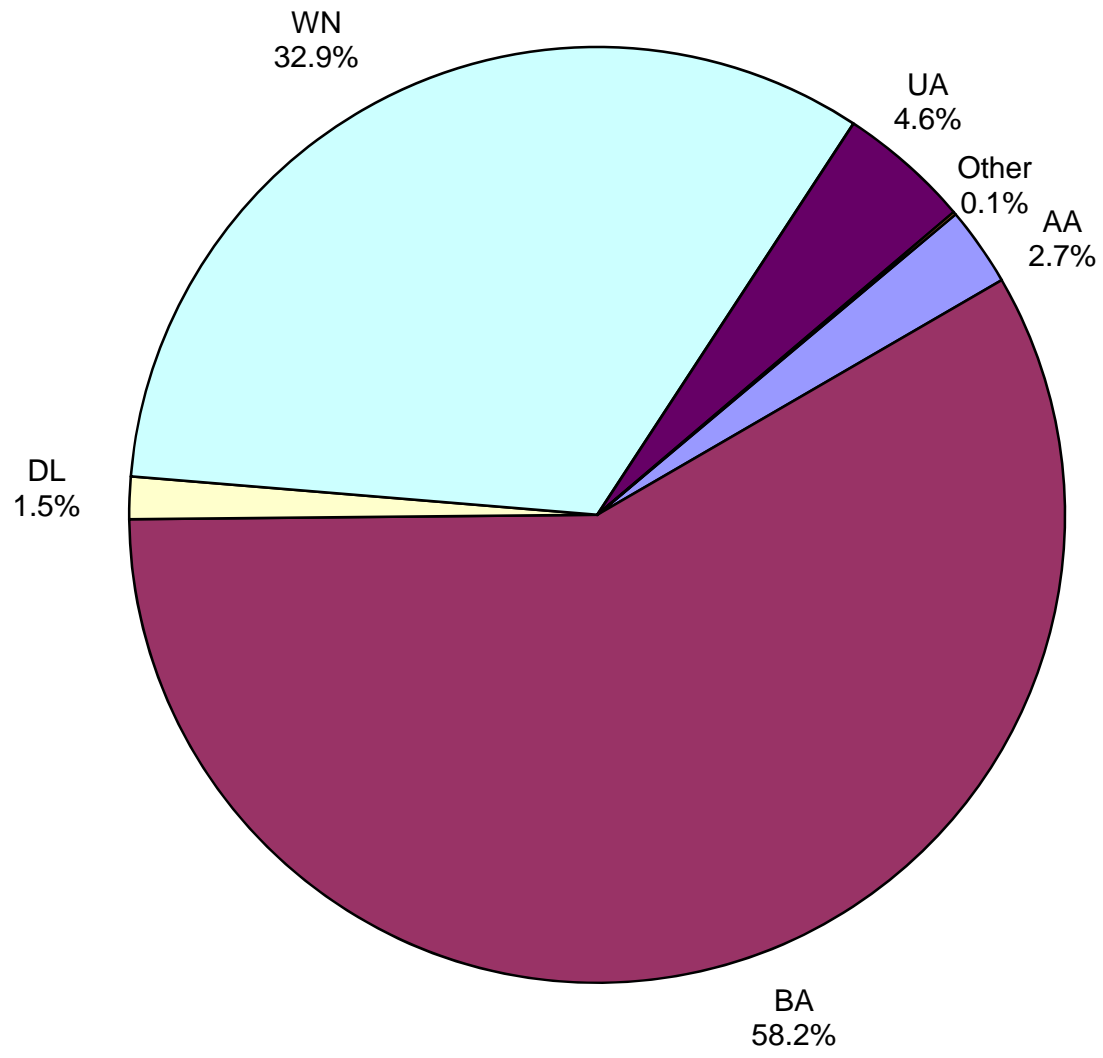
**All Passenger Carriers
Enplaned Revenue Passengers
November 2016**



Other: Aeromexico, Air Canada, Eastern Air Lines, Miami Air, Sun Country, Texas Sky, Volaris, Xtra Airways

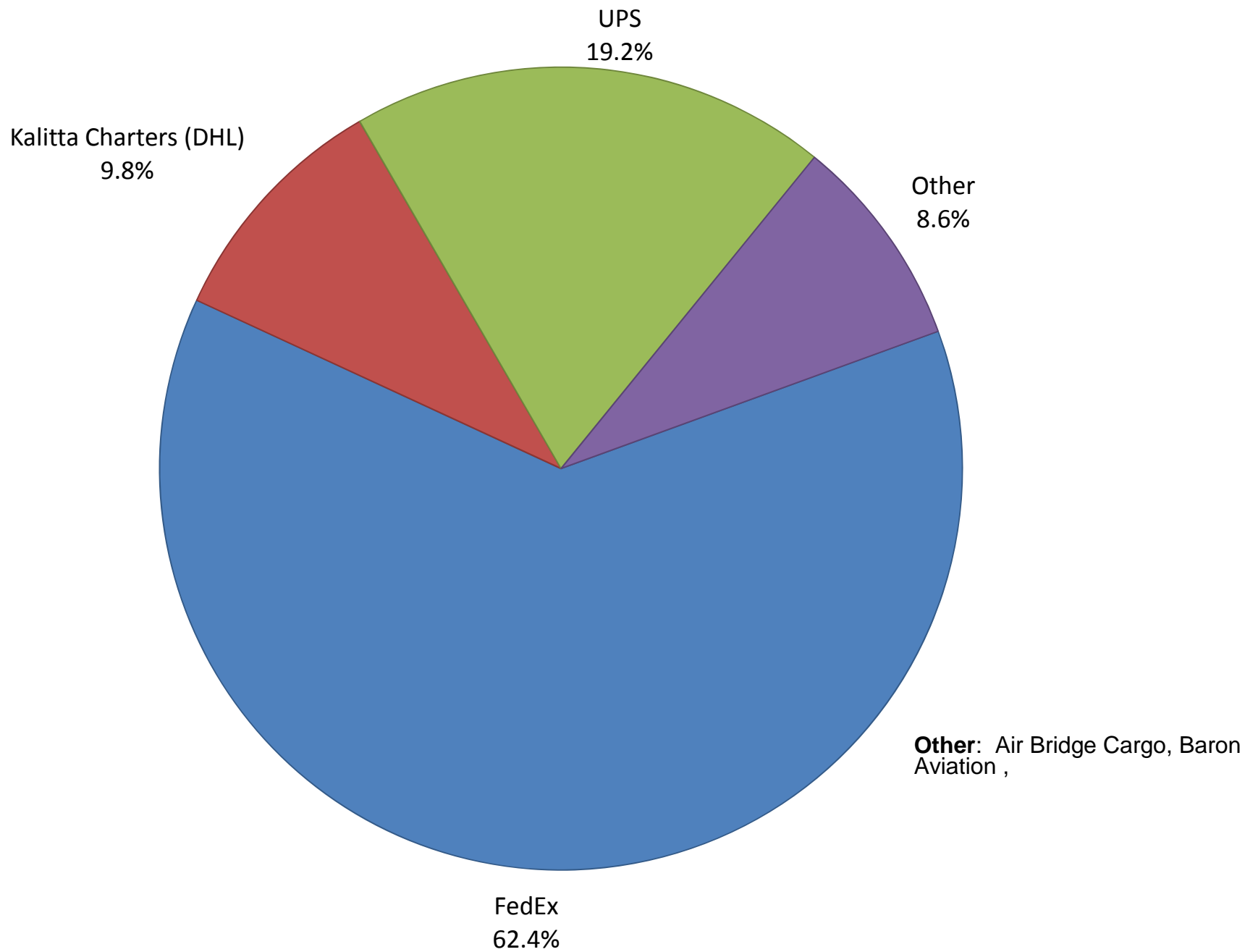
Note: American/US Airways, Delta and United Airlines percentages include Affiliates.

AUS Belly Freight Market Shares
November 2016

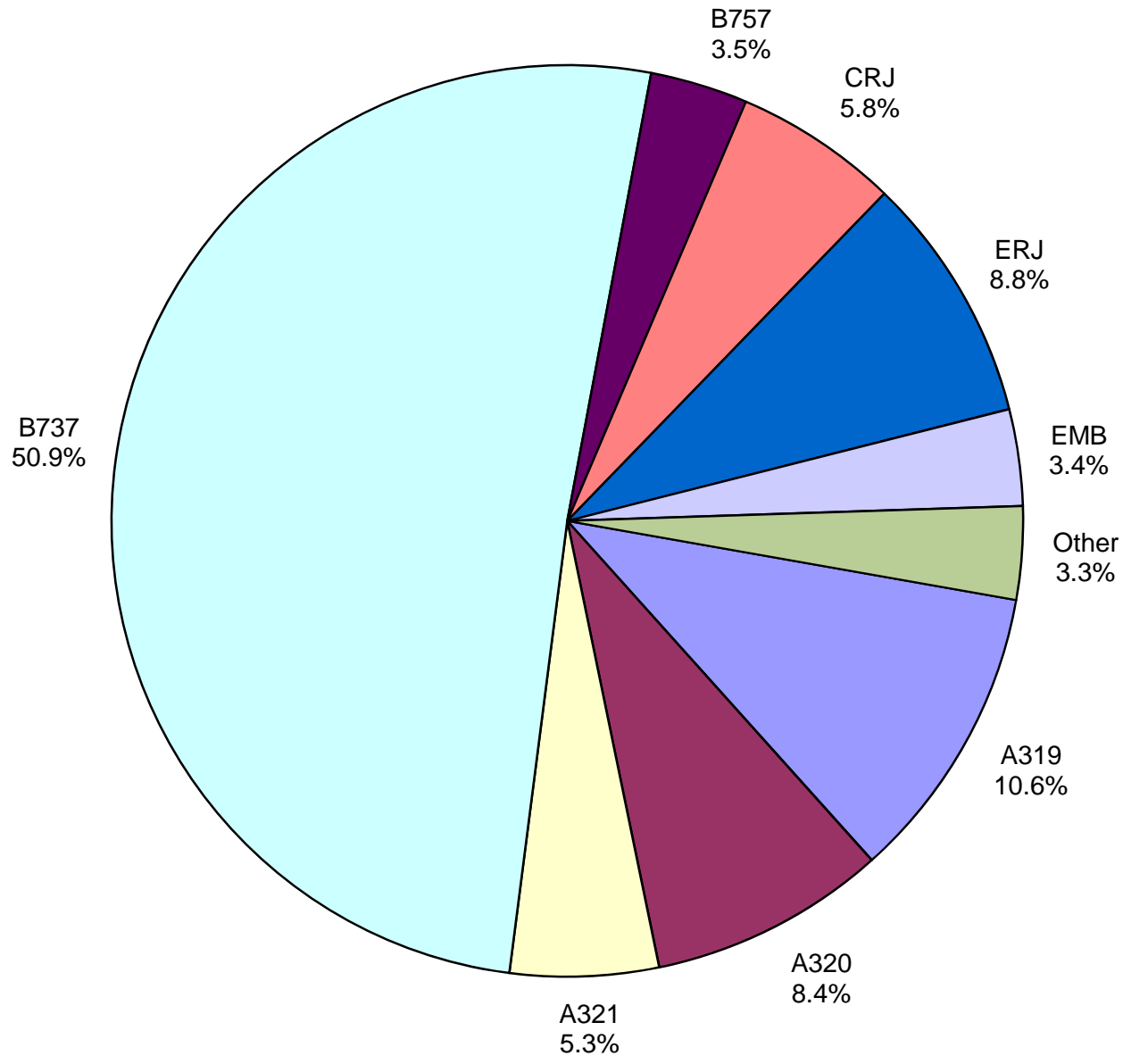


Other = Alaska Airlines

Air Cargo Market Share November 2016

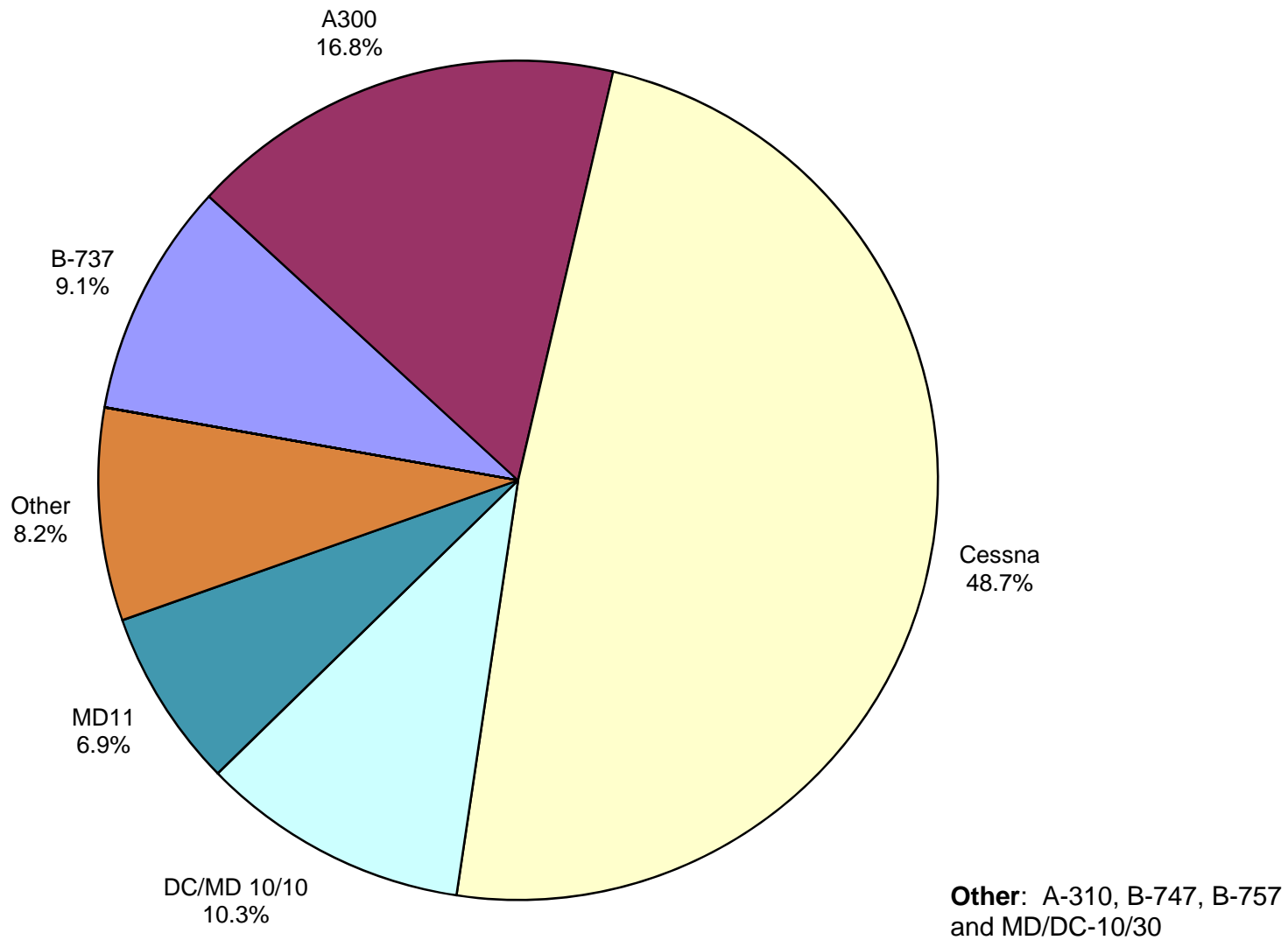


**AUS Scheduled Passenger Aircraft Fleet Mix
November 2016**



Other: B-717, B-767, B-787, BAE-3200, BAE-4100, MD-80, MD-83, MD-88 and MD-90

**AUS Scheduled Cargo Aircraft Fleet Mix
November 2016**



Austin-Bergstrom International Airport

PAX Detail Report - November, 2016

Company	11/2016	11/2015	Period		YTD 2016	YTD 2015	YTD		2016 Share	2015 Share	Share Diff
			Difference	Change			Difference	Change			
AeroMexico Airlines/Aerovias de Mexico, S.A. de C.V.	1,346	0	1,346	0.0	1,346	98	1,248	1,273.5	0.0	0.0	0.0
Air Canada	3,679	2,948	731	24.8	38,876	21,491	17,385	80.9	0.3	0.2	0.1
Alaska Airlines, Inc.	19,811	12,740	7,071	55.5	206,680	134,056	72,624	54.2	1.8	1.2	0.6
Allegiant Air, LLC	14,253	11,198	3,055	27.3	157,022	110,486	46,536	42.1	1.4	1.0	0.4
American Airlines, Inc.	215,097	236,598	-21,501	-9.1	2,328,042	1,929,342	398,700	20.7	20.4	17.8	2.7
Ameristarjet Charter Inc.	0	16	-16	-100.0	14	30	-16	-53.3	0.0	0.0	0.0
Atlas Air, Inc	0	0	0	0.0	453	558	-105	-18.8	0.0	0.0	0.0
Branson AirExpress, LLC	0	0	0	0.0	0	2,107	-2,107	-100.0	0.0	0.0	0.0
British Airways Plc	10,094	9,930	164	1.7	119,911	113,667	6,244	5.5	1.1	1.0	0.0
Condor Airlines (Flugdienst) GmbH	0	0	0	0.0	8,142	0	8,142	0.0	0.1	0.0	0.1
Delta Air Lines	131,402	115,702	15,700	13.6	1,407,106	1,312,134	94,972	7.2	12.3	12.1	0.3
Eastern Air Lines Group, Inc.	163	0	163	0.0	163	0	163	0.0	0.0	0.0	0.0
Frontier Airlines, Inc.	23,538	22,732	806	3.5	292,355	327,334	-34,979	-10.7	2.6	3.0	-0.4
Iberia Airlines	0	0	0	0.0	246	0	246	0.0	0.0	0.0	0.0
JetBlue Airways Corporation	43,599	39,957	3,642	9.1	518,321	498,088	20,233	4.1	4.5	4.6	0.0
Kalitta Charters, LLC	0	0	0	0.0	0	1	-1	-100.0	0.0	0.0	0.0
Miami Air International Inc.	751	605	146	24.1	751	1,348	-597	-44.3	0.0	0.0	0.0
Omni Air International	0	0	0	0.0	0	238	-238	-100.0	0.0	0.0	0.0
Public Charters, Inc., d/b/a Texas Sky	368	132	236	178.8	1,830	2,477	-647	-26.1	0.0	0.0	0.0
Republic Airlines, Inc.	0	0	0	0.0	0	1,058	-1,058	-100.0	0.0	0.0	0.0
Southwest Airlines	420,011	394,799	25,212	6.4	4,361,662	3,951,515	410,147	10.4	38.3	36.4	1.9
Sun Country Airlines/ MN Airlines, LLC	328	374	-46	-12.3	4,882	2,405	2,477	103.0	0.0	0.0	0.0
Titan Airways Ltd.	0	0	0	0.0	0	160	-160	-100.0	0.0	0.0	0.0
Transportes Aeromar S.A. de C.V.	0	0	0	0.0	0	170	-170	-100.0	0.0	0.0	0.0
Turkish Airlines	0	0	0	0.0	376	0	376	0.0	0.0	0.0	0.0
United Airlines, Inc.	169,433	164,226	5,207	3.2	1,787,304	1,806,659	-19,355	-1.1	15.7	16.6	-0.9
US Airways Group, Inc.	0	0	0	0.0	0	428,636	-428,636	-100.0	0.0	3.9	-3.9
Virgin America Inc.	13,986	24,266	-10,280	-42.4	157,506	224,098	-66,592	-29.7	1.4	2.1	-0.7
Volaris	2,066	0	2,066	0.0	7,691	0	7,691	0.0	0.1	0.0	0.1
Xtra Airways/Casino Express	642	0	642	0.0	2,103	0	2,103	0.0	0.0	0.0	0.0
Report Totals	1,070,567	1,036,223	34,344	3.3%	11,402,782	10,868,156	534,626	4.9%			

Statistics Included in Report:

Domestic Passengers:	Enplaned Revenue, Deplaned Revenue, Enplaned Non-Revenue, Deplaned Non-Revenue
International Passengers:	Enplaned Revenue, Deplaned Revenue, Enplaned Non-Revenue, Deplaned Non-Revenue
International Pre-Cleared Passengers:	Enplaned Revenue, Deplaned Revenue, Enplaned Non-Revenue, Deplaned Non-Revenue

Austin-Bergstrom International Airport

Summary Landing Report

Landing Type: Total

Month	2016		2015		2014		% Change 2016 - 2015		% Change 2015 - 2014	
	Count	Weight	Count	Weight	Count	Weight	Count	Weight	Count	Weight
January	4,622	560,718,408	4,480	530,688,382	4,213	478,945,673	3.17%	5.66%	6.34%	10.80%
February	4,387	527,452,920	3,992	477,489,019	3,839	437,160,505	9.89%	10.46%	3.99%	9.23%
March	5,151	639,655,137	4,872	584,604,521	4,746	552,992,572	5.73%	9.42%	2.65%	5.72%
April	4,892	614,643,711	4,875	593,462,176	4,515	521,133,372	0.35%	3.57%	7.97%	13.88%
May	5,096	630,853,941	5,161	625,876,151	4,749	553,415,664	-1.26%	0.80%	8.68%	13.09%
June	5,179	651,537,449	5,239	644,690,908	4,821	569,196,868	-1.15%	1.06%	8.67%	13.26%
July	5,233	663,015,597	5,503	676,131,170	5,000	590,375,055	-4.91%	-1.94%	10.06%	14.53%
August	5,181	660,099,361	5,277	652,770,571	4,752	562,685,827	-1.82%	1.12%	11.05%	16.01%
September	4,738	623,397,035	4,833	598,547,454	4,513	546,749,431	-1.97%	4.15%	7.09%	9.47%
October	4,923	649,182,343	4,891	611,952,269	4,842	589,981,037	0.65%	6.08%	1.01%	3.72%
November	4,775	624,303,554	4,815	605,234,834	4,532	546,643,220	-0.83%	3.15%	6.24%	10.72%
December			5,100	633,215,540	4,826	569,752,623			5.68%	11.14%
Totals for Selected Period	54,177	6,844,859,456	53,938	6,601,447,455	50,522	5,949,279,224	0.44%	3.69%	6.76%	10.96%
Yearly Totals	54,177	6,844,859,456	59,038	7,234,662,995	55,348	6,519,031,847			6.67%	10.98%