

**Austin-Bergstrom International Airport  
Aviation Activity Report  
Calendar Year 2019 vs 2018**

**Combined Terminals**

	12/2019	12/2018	Percent Change	1/2019 - 12/2019	1/2018 - 12/2018	Percent Change
<b>ABIA</b>						
<b>Total Passenger Activity</b>						
Domestic Enplaned Revenue	676,495	579,913	16.65	7,715,929	7,336,603	5.17
Domestic Deplaned Revenue	657,508	552,697	18.96	7,692,923	7,314,338	5.18
International Enplaned Revenue	18,437	12,882	43.12	218,356	190,772	14.46
International Deplaned Revenue	17,424	11,983	45.41	224,491	194,381	15.49
Domestic Enplaned Non-Revenue	13,422	13,131	2.22	167,454	173,460	-3.46
Domestic Deplaned Non-Revenue	12,462	12,759	-2.33	159,944	166,632	-4.01
International Enplaned Non-Revenue	159	120	32.50	1,710	1,472	16.17
International Deplaned Non-Revenue	141	95	48.42	1,793	1,252	43.21
Intl Enplaned Pre-Cleared Revenue	2,513	2,149	16.94	42,050	23,216	81.13
Intl Deplaned Pre-Cleared Revenue	1,972	2,342	-15.80	40,911	25,179	62.48
Intl Enplaned Pre-Cleared Non-Revenue	42	20	110.00	528	357	47.90
Intl Deplaned Pre-Cleared Non-Revenue	48	24	100.00	548	374	46.52
South Terminal Domestic Enplaned Revenue	35,524	37,857	-6.16	535,968	195,697	173.88
South Terminal Domestic Deplaned Revenue	34,731	36,928	-5.95	537,338	195,692	174.58
South Terminal Domestic Enplaned Non-Revenue	91	109	-16.51	1,716	220	680.00
South Terminal Domestic Deplaned Non-Revenue	84	126	-33.33	2,070	267	675.28
<b>ABIA Passenger Totals</b>	<b>1,471,053</b>	<b>1,263,135</b>	<b>16.46</b>	<b>17,343,729</b>	<b>15,819,912</b>	<b>9.63</b>
<i>ABIA Enplaned Passenger Totals</i>	<i>746,683</i>	<i>646,181</i>	<i>15.55</i>	<i>8,683,711</i>	<i>7,921,797</i>	<i>9.62</i>
<i>ABIA Deplaned Passenger Totals</i>	<i>724,370</i>	<i>616,954</i>	<i>17.41</i>	<i>8,660,018</i>	<i>7,898,115</i>	<i>9.65</i>
<i>ABIA Domestic Passenger Totals</i>	<i>1,430,317</i>	<i>1,233,520</i>	<i>15.95</i>	<i>16,813,342</i>	<i>15,382,909</i>	<i>9.30</i>
<i>ABIA International Passenger Totals</i>	<i>40,736</i>	<i>29,615</i>	<i>37.55</i>	<i>530,387</i>	<i>437,003</i>	<i>21.37</i>

**CURRENT PASSENGER RECORD = 1,643,016 RECORD SET = JULY 2019**

<b>Total Aircraft Operations</b>						
Air Carrier	11,936	10,890	9.61	142,150	134,372	5.79
Commuter & Air Taxi	1,343	1,266	6.08	16,061	17,465	-8.04
Military	297	643	-53.81	7,918	9,756	-18.84
General Aviation						
Itinerant	3,382	3,490	-3.09	42,755	47,158	-9.34
Local	0	6	-100.00	842	1,329	-36.64
Total G.A.	<b>3,382</b>	<b>3,496</b>	<b>-3.26</b>	<b>43,597</b>	<b>48,487</b>	<b>-10.09</b>
<b>Total Operations</b>	<b>16,958</b>	<b>16,295</b>	<b>4.07</b>	<b>209,726</b>	<b>210,080</b>	<b>-0.17</b>

**Austin-Bergstrom International Airport  
Aviation Activity Report  
Calendar Year 2019 vs 2018**

**By Terminal**

	12/2019	12/2018	Percent Change	1/2019 - 12/2019	1/2018 - 12/2018	Percent Change
<b><u>Barbara Jordan Terminal (BJT)</u></b>						
<b>Passenger Activity</b>						
Domestic Enplaned Revenue	676,495	579,913	16.65	7,715,929	7,336,603	5.17
Domestic Deplaned Revenue	657,508	552,697	18.96	7,692,923	7,314,338	5.18
International Enplaned Revenue	18,437	12,882	43.12	218,356	190,772	14.46
International Deplaned Revenue	17,424	11,983	45.41	224,491	194,381	15.49
Domestic Enplaned Non-Revenue	13,422	13,131	2.22	167,454	173,460	-3.46
Domestic Deplaned Non-Revenue	12,462	12,759	-2.33	159,944	166,632	-4.01
International Enplaned Non-Revenue	159	120	32.50	1,710	1,472	16.17
International Deplaned Non-Revenue	141	95	48.42	1,793	1,252	43.21
Intl Enplaned Pre-Cleared Revenue	2,513	2,149	16.94	42,050	23,216	81.13
Intl Deplaned Pre-Cleared Revenue	1,972	2,342	-15.80	40,911	25,179	62.48
Intl Enplaned Pre-Cleared Non-Revenue	42	20	110.00	528	357	47.90
Intl Deplaned Pre-Cleared Non-Revenue	48	24	100.00	548	374	46.52
<b>Barbara Jordan Terminal Passenger Totals</b>	<b>1,400,623</b>	<b>1,188,115</b>	<b>17.89</b>	<b>16,266,637</b>	<b>15,428,036</b>	<b>5.44</b>
<i>BJT Enplaned Passenger Totals</i>	<i>711,068</i>	<i>608,215</i>	<i>16.91</i>	<i>8,146,027</i>	<i>7,725,880</i>	<i>5.44</i>
<i>BJT Deplaned Passenger Totals</i>	<i>689,555</i>	<i>579,900</i>	<i>18.91</i>	<i>8,120,610</i>	<i>7,702,156</i>	<i>5.43</i>
<i>BJT Domestic Passenger Totals</i>	<i>1,359,887</i>	<i>1,158,500</i>	<i>17.38</i>	<i>15,736,250</i>	<i>14,991,033</i>	<i>4.97</i>
<i>BJT International Passenger Totals</i>	<i>40,736</i>	<i>29,615</i>	<i>37.55</i>	<i>530,387</i>	<i>437,003</i>	<i>21.37</i>
<b><u>South Terminal (ST)</u></b>						
<b>Passenger Activity</b>						
South Terminal Domestic Enplaned Revenue	35,524	37,857	-6.16	535,968	195,697	173.88
South Terminal Domestic Deplaned Revenue	34,731	36,928	-5.95	537,338	195,692	174.58
South Terminal Domestic Enplaned Non-Revenue	91	109	-16.51	1,716	220	680.00
South Terminal Domestic Deplaned Non-Revenue	84	126	-33.33	2,070	267	675.28
<b>South Terminal Passenger Totals</b>	<b>70,430</b>	<b>75,020</b>	<b>-6.12</b>	<b>1,077,092</b>	<b>391,876</b>	<b>174.86</b>
<i>ST Enplaned Passenger Totals</i>	<i>35,615</i>	<i>37,966</i>	<i>-6.19</i>	<i>537,684</i>	<i>195,917</i>	<i>174.44</i>
<i>ST Deplaned Passenger Totals</i>	<i>34,815</i>	<i>37,054</i>	<i>-6.04</i>	<i>539,408</i>	<i>195,959</i>	<i>175.27</i>

**Austin-Bergstrom International Airport  
Aviation Activity Report  
Calendar Year 2019 vs 2018**

	12/2019	12/2018	Percent Change	1/2019 - 12/2019	1/2018 - 12/2018	Percent Change
<b><u>Total Cargo Activity</u></b>						
<b>Mail</b>						
Domestic Enplaned Mail	247,703	174,862	41.66	2,354,286	2,365,233	-0.46
Domestic Deplaned Mail	634,007	616,323	2.87	8,044,724	5,418,959	48.46
International Enplaned Mail	0	0	0.00	0	0	0.00
International Deplaned Mail	0	0	0.00	110,830	0	0.00
South Terminal-Domestic Enplaned Mail	0	0	0.00	0	0	0.00
South Terminal-Domestic Deplaned Mail	0	0	0.00	0	0	0.00
<b>Mail Totals</b>	<b>881,710</b>	<b>791,185</b>	<b>11.44</b>	<b>10,509,840</b>	<b>7,784,192</b>	<b>35.02</b>
<b>Cargo</b>						
Domestic Enplaned Cargo	5,056,258	4,983,423	1.46	57,965,500	59,286,968	-2.23
Domestic Deplaned Cargo	7,805,153	7,114,403	9.71	82,485,526	83,691,683	-1.44
International Enplaned Cargo	206,508	130,464	58.29	6,064,392	7,793,415	-22.19
International Deplaned Cargo	126,092	200,585	-37.14	3,024,848	3,631,265	-16.70
South Terminal-Domestic Enplaned Cargo	0	0	0.00	0	0	0.00
South Terminal-Domestic Deplaned Cargo	0	0	0.00	0	0	0.00
<b>Cargo Totals</b>	<b>13,194,011</b>	<b>12,428,875</b>	<b>6.16</b>	<b>149,540,266</b>	<b>154,403,331</b>	<b>-3.15</b>
<b>Belly Freight</b>						
Domestic Enplaned Belly Freight	315,813	272,639	15.84	3,781,224	3,564,993	6.07
Domestic Deplaned Belly Freight	503,681	443,880	13.47	6,124,397	5,871,453	4.31
International Enplaned Belly Freight	326,009	201,982	61.40	4,177,197	3,114,667	34.11
International Deplaned Belly Freight	969,520	873,268	11.02	8,153,757	7,799,776	4.54
South Terminal-Domestic Enplaned Belly Frght	0	0	0.00	0	0	0.00
South Terminal-Domestic Deplaned Belly Frght	0	0	0.00	0	0	0.00
<b>Belly Freight Totals</b>	<b>2,115,023</b>	<b>1,791,769</b>	<b>18.04</b>	<b>22,236,575</b>	<b>20,350,889</b>	<b>9.27</b>
<b>Cargo Totals (Mail, Cargo, Belly Freight)</b>	<b>16,190,744</b>	<b>15,011,829</b>	<b>7.85</b>	<b>182,286,681</b>	<b>182,538,412</b>	<b>-0.14</b>
<i>Enplaned Cargo Totals</i>	<i>6,152,291</i>	<i>5,763,370</i>	<i>6.75</i>	<i>74,342,599</i>	<i>76,125,276</i>	<i>-2.34</i>
<i>Deplaned Cargo Totals</i>	<i>10,038,453</i>	<i>9,248,459</i>	<i>8.54</i>	<i>107,944,082</i>	<i>106,413,136</i>	<i>1.44</i>
<i>Domestic Cargo Totals</i>	<i>14,562,615</i>	<i>13,605,530</i>	<i>7.03</i>	<i>160,755,657</i>	<i>160,199,289</i>	<i>0.35</i>
<i>International Cargo Totals</i>	<i>1,628,129</i>	<i>1,406,299</i>	<i>15.77</i>	<i>21,531,024</i>	<i>22,339,123</i>	<i>-3.62</i>

CURRENT CARGO RECORD = 40,215,518

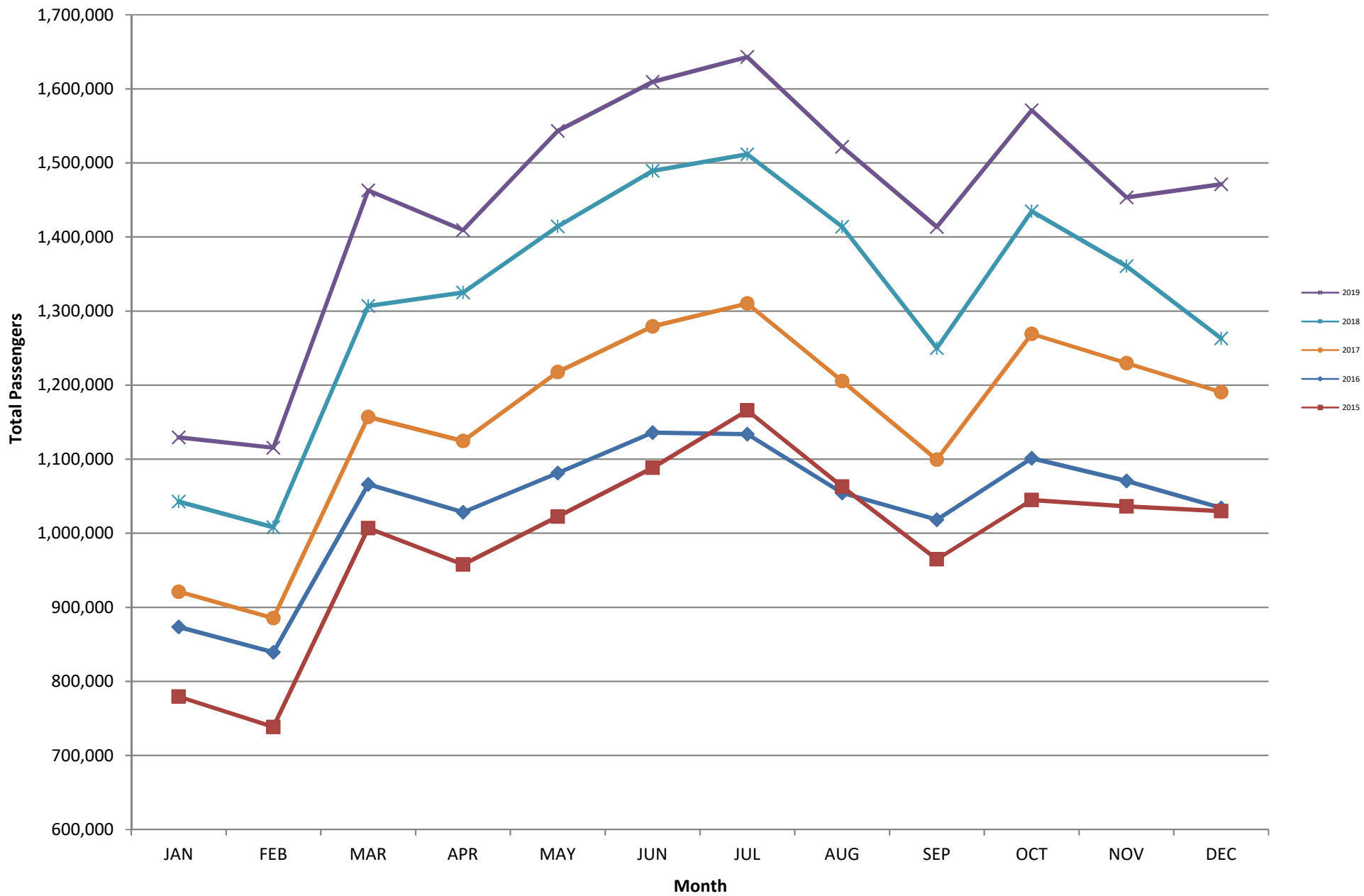
RECORD SET = MARCH 2001

**AUS – Airline Codes**  
December 2019

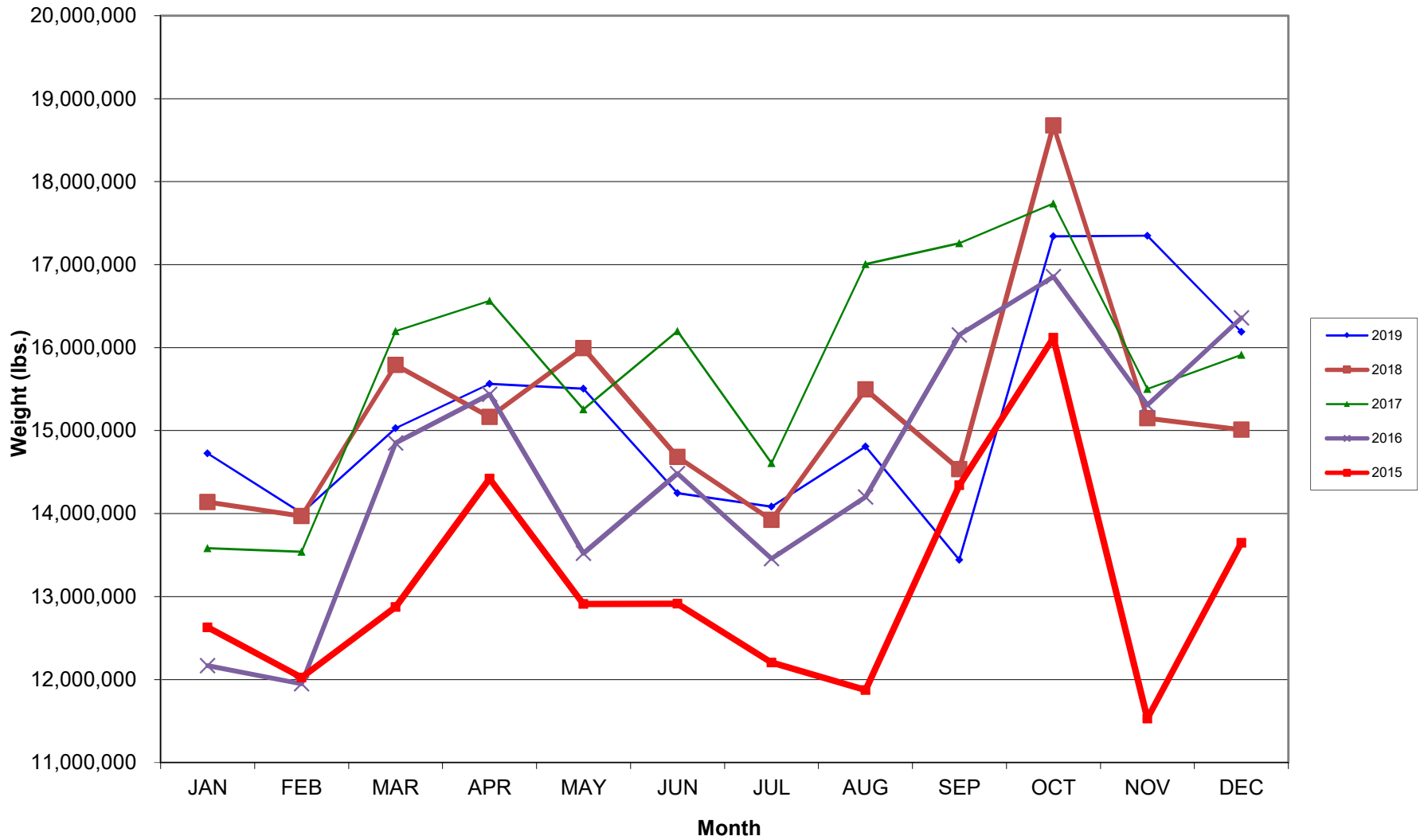
<b><u>Code</u></b>	<b><u>Carrier</u></b>
AM	Aerovias de Mexico S.A. de C.V. dba AeroMexico Airlines
AC	Air Canada
AS	Alaska Airlines, Inc.
G4	Allegiant Air, LLC
AA	American Airlines, Inc.
BA	British Airways Plc
DL	Delta Airlines
LH	Deutsche Lufthansa AG
F9	Frontier Airlines
B6	JetBlue Airways Corp.
WN	Southwest Airlines
NK	Spirit Airlines
SY	Sun Country Airlines
UA	United Airlines, Inc.

# AUSTIN PASSENGER TRAFFIC

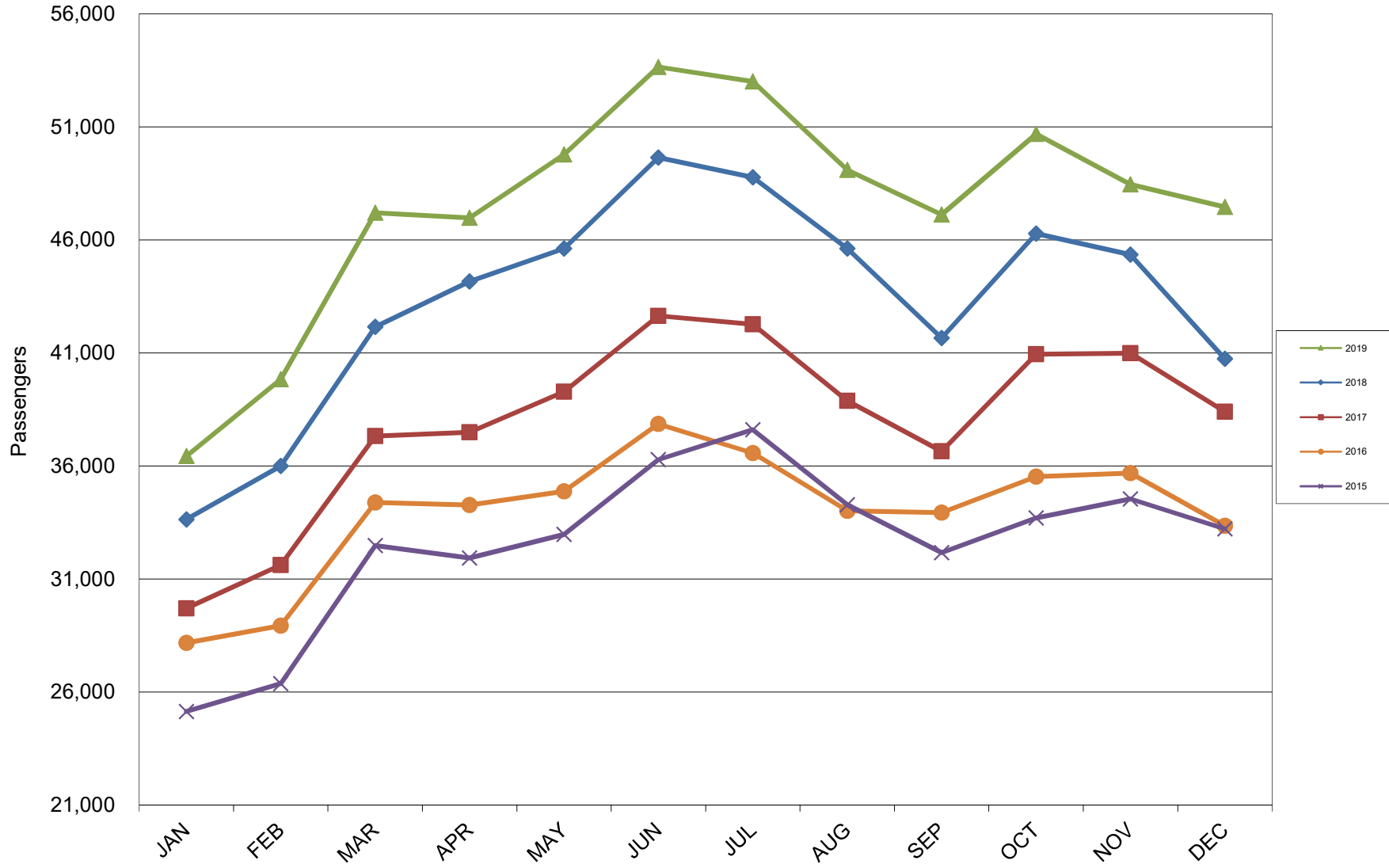
## 5 Year Trend



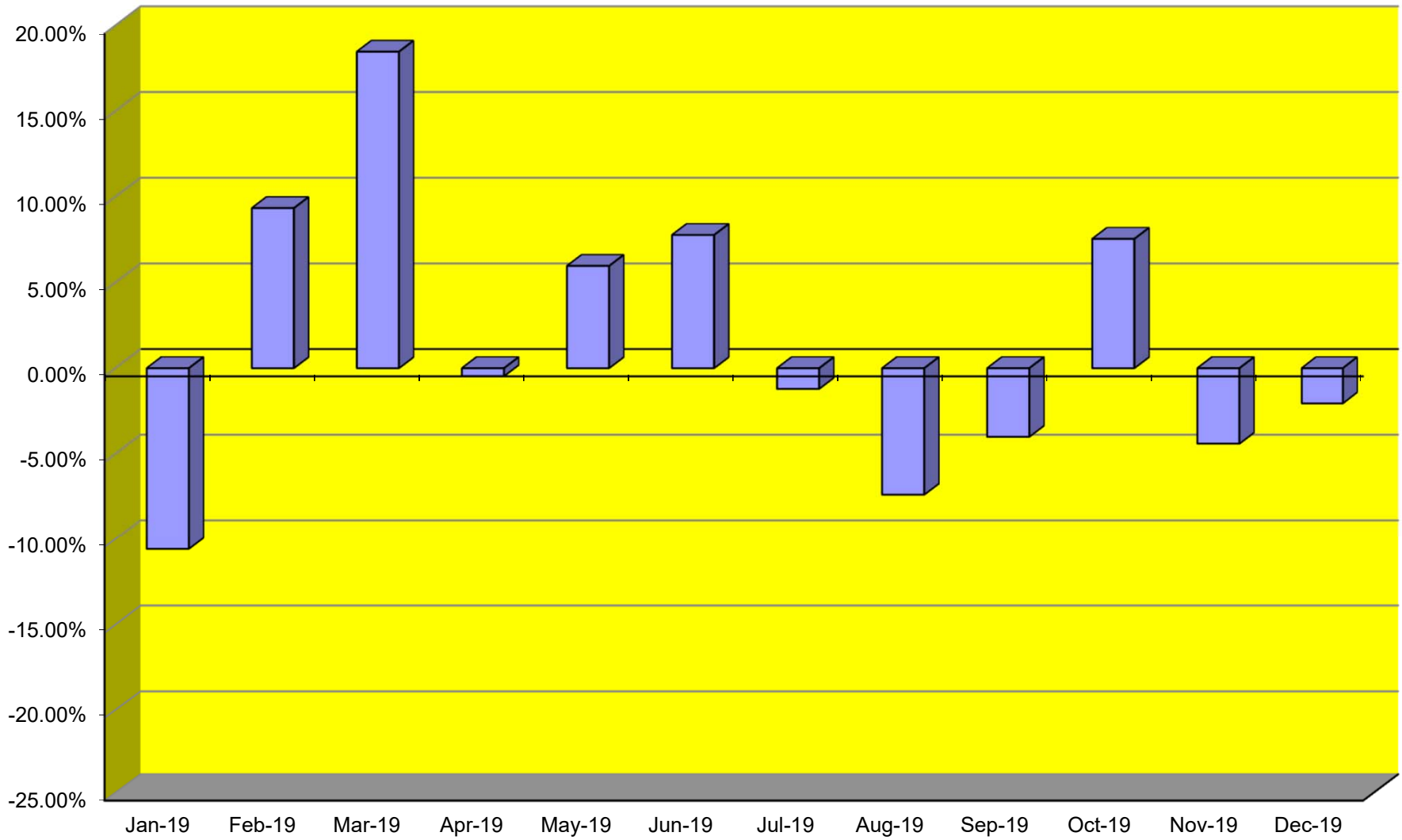
### TOTAL CARGO POUNDAGE - AUSTIN, TEXAS



Average Daily Passengers

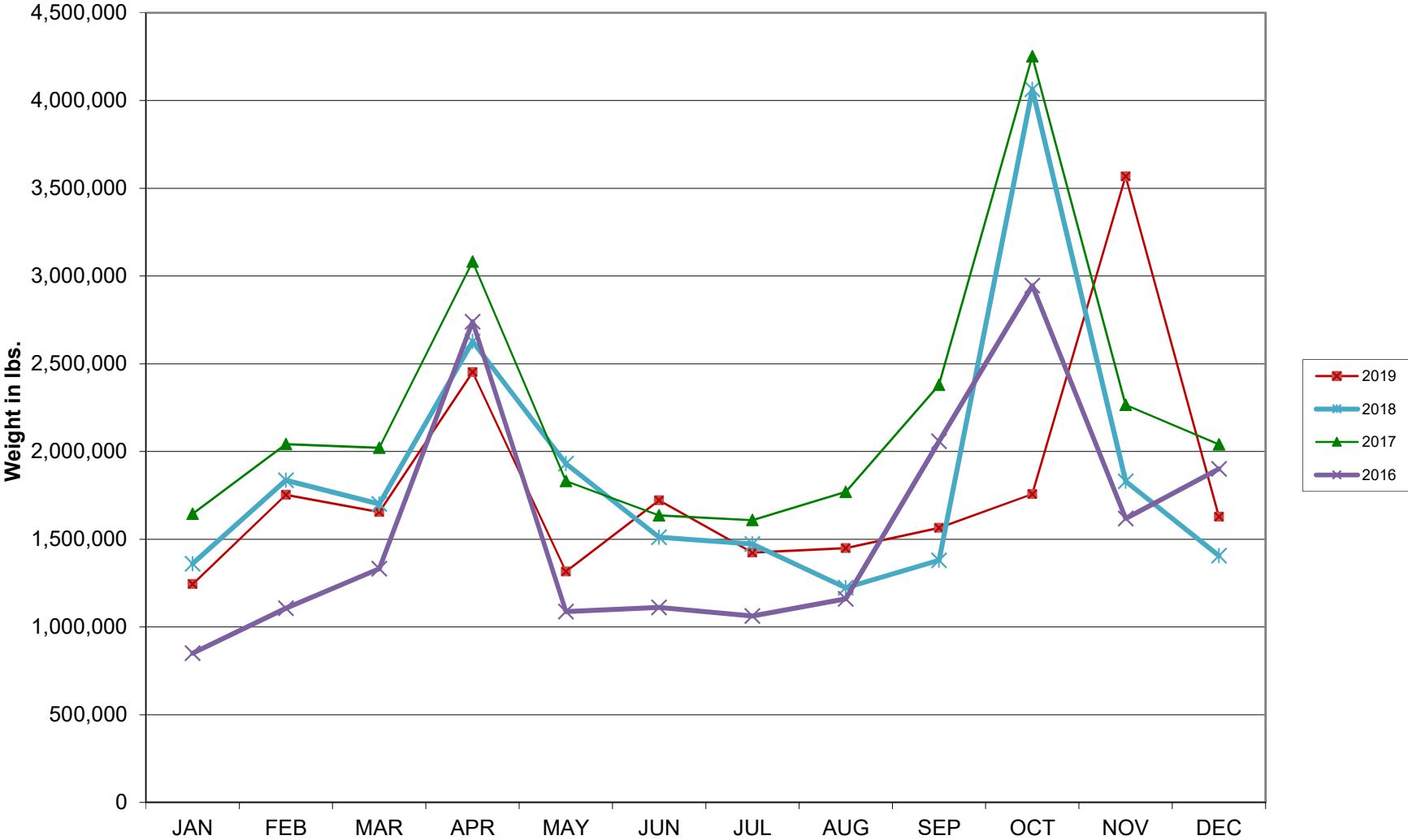


**Monthly % Change in Average Daily Passengers**

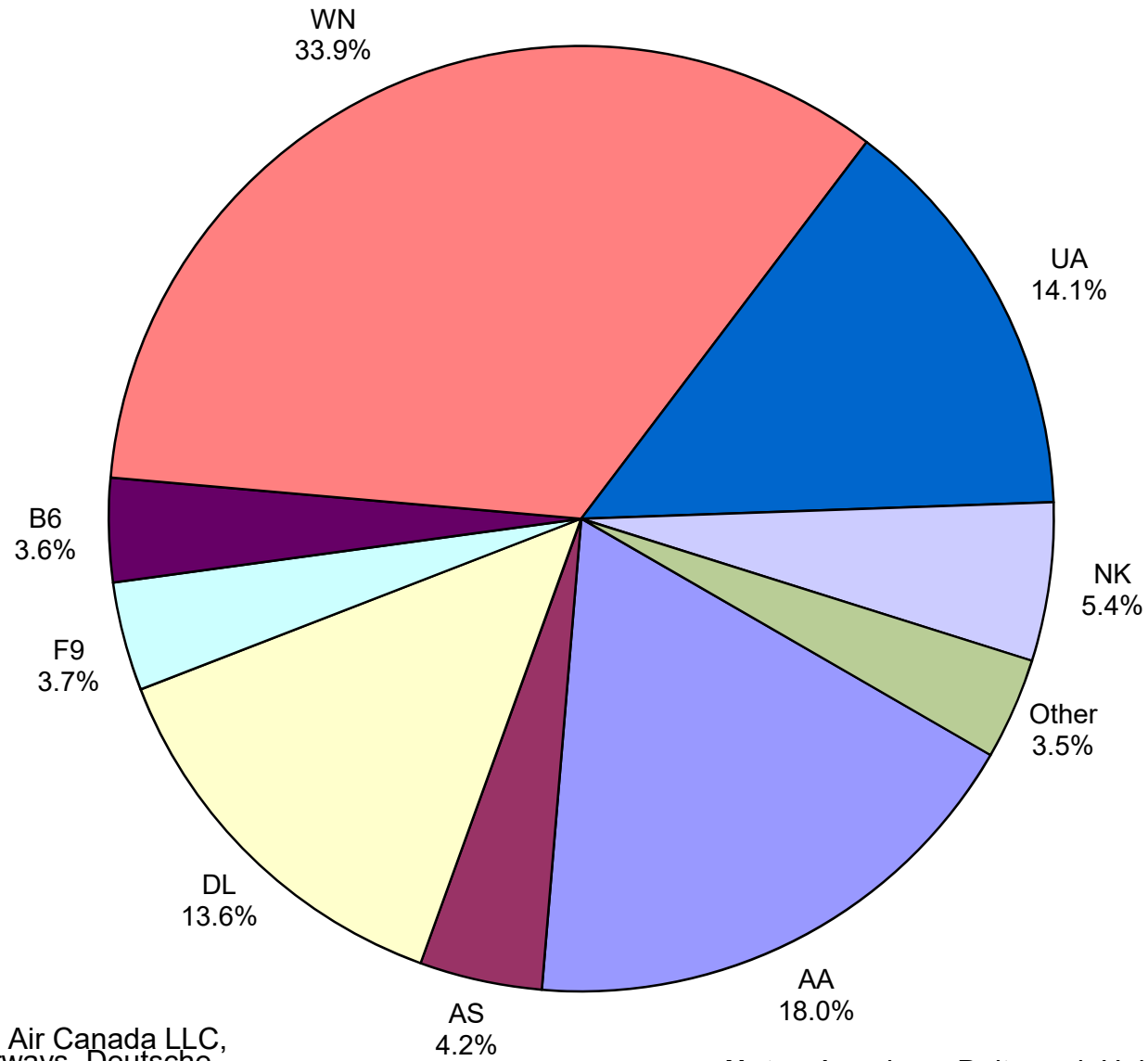




# HISTORY OF INTERNATIONAL AIR CARGO



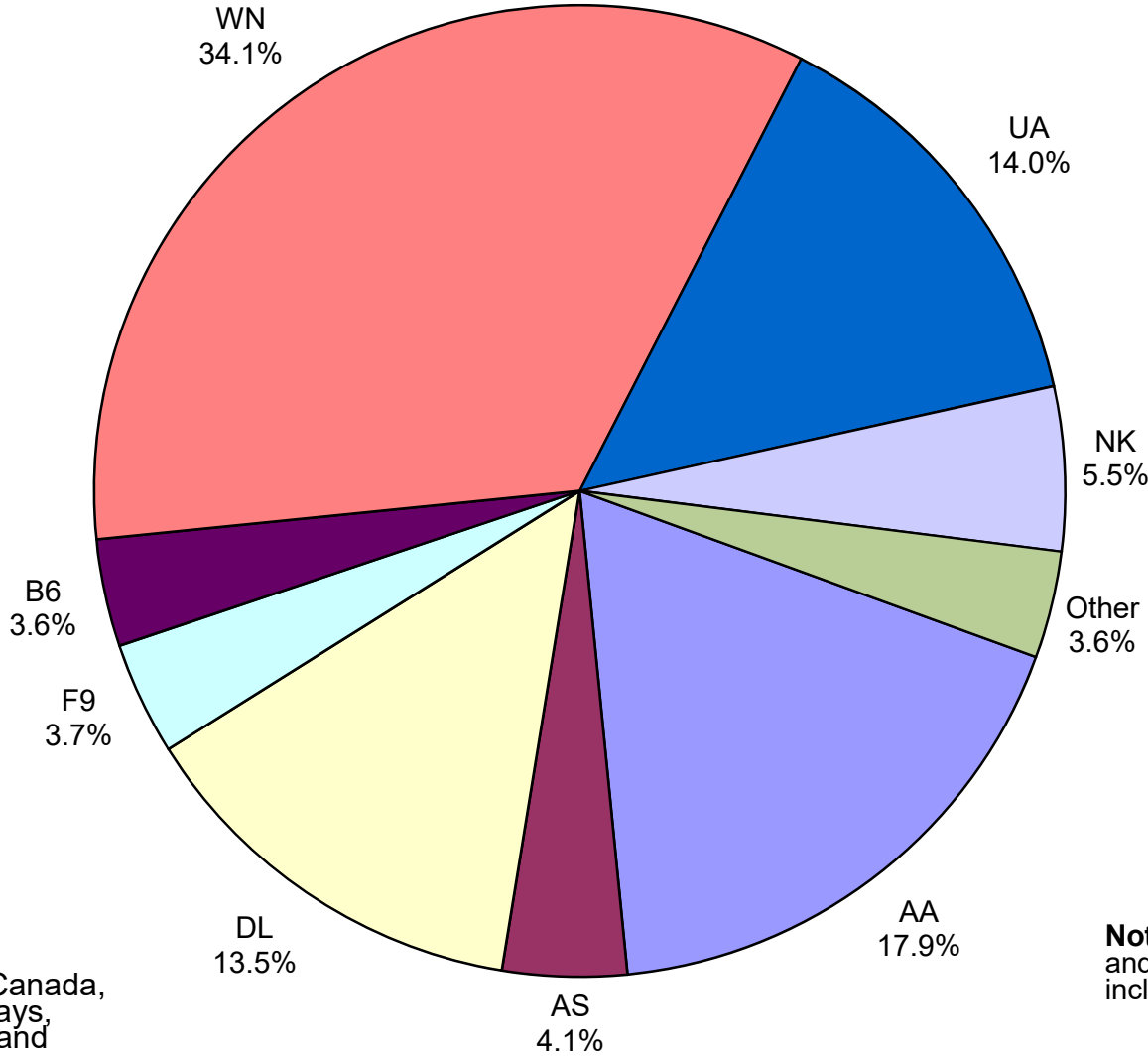
### Total Passengers December 2019



**Other:** Aeromexico, Air Canada LLC, Allegiant Air, British Airways, Deutsche Lufthansa AG and Sun Country

**Note:** American, Delta and United Airlines percentages include Affiliates.

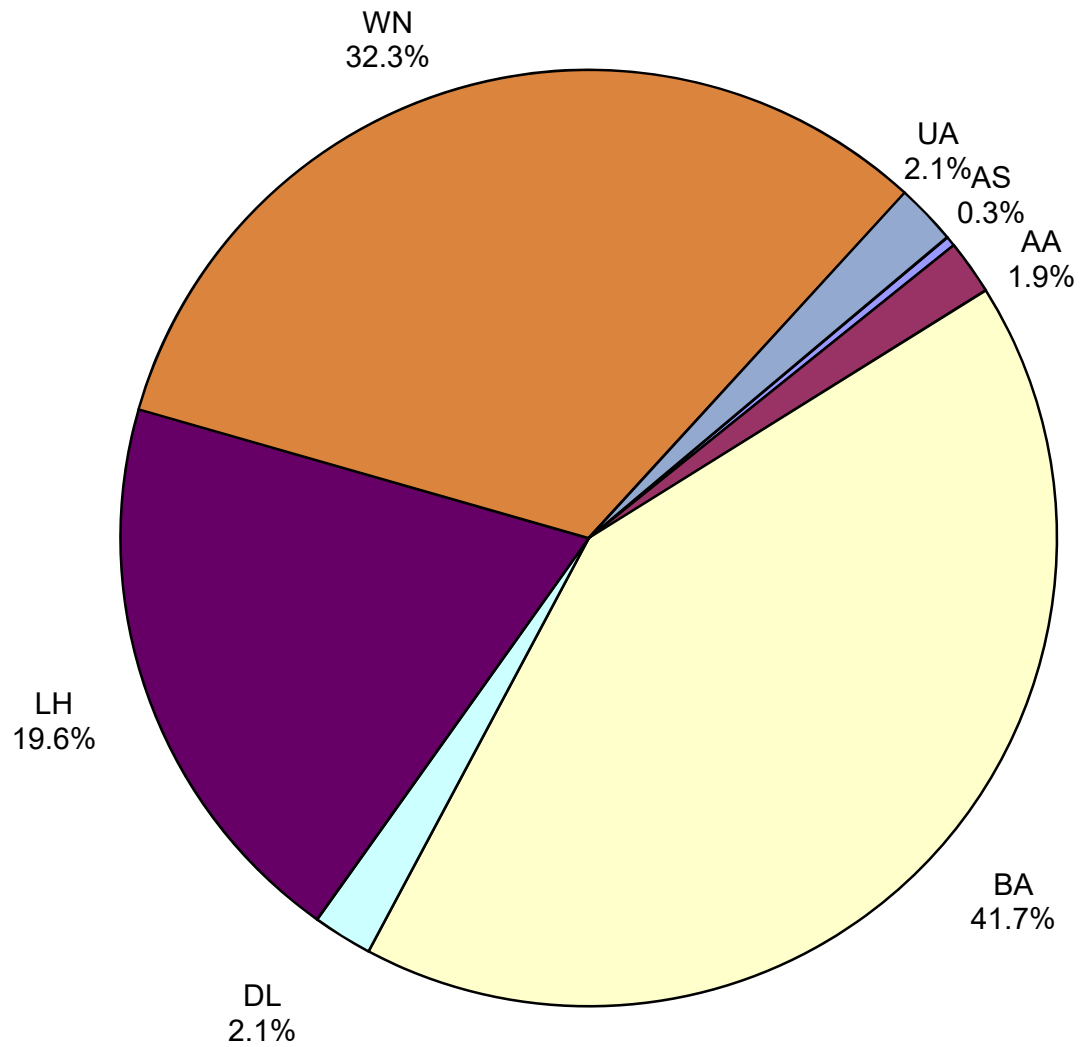
**All Passenger Carriers  
Enplaned Revenue Passengers  
December 2019**



**Other:** Aeromexico, Air Canada, Allegiant Air, British Airways, Deutsche Lufthansa AG and Sun Country Airlines

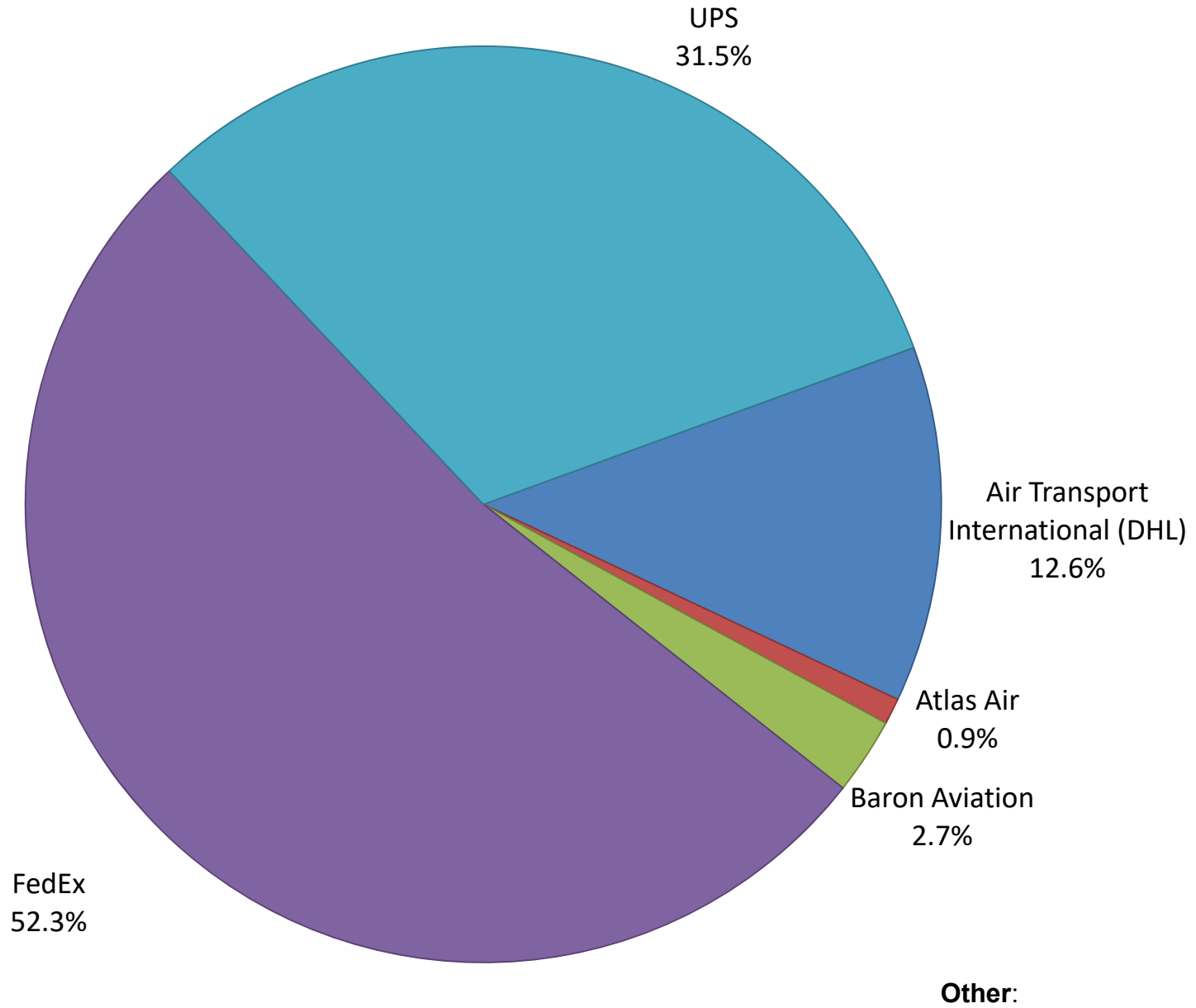
**Note:** American/US Airways, Delta and United Airlines percentages include Affiliates.

**AUS Belly Freight Market Shares  
December 2019**

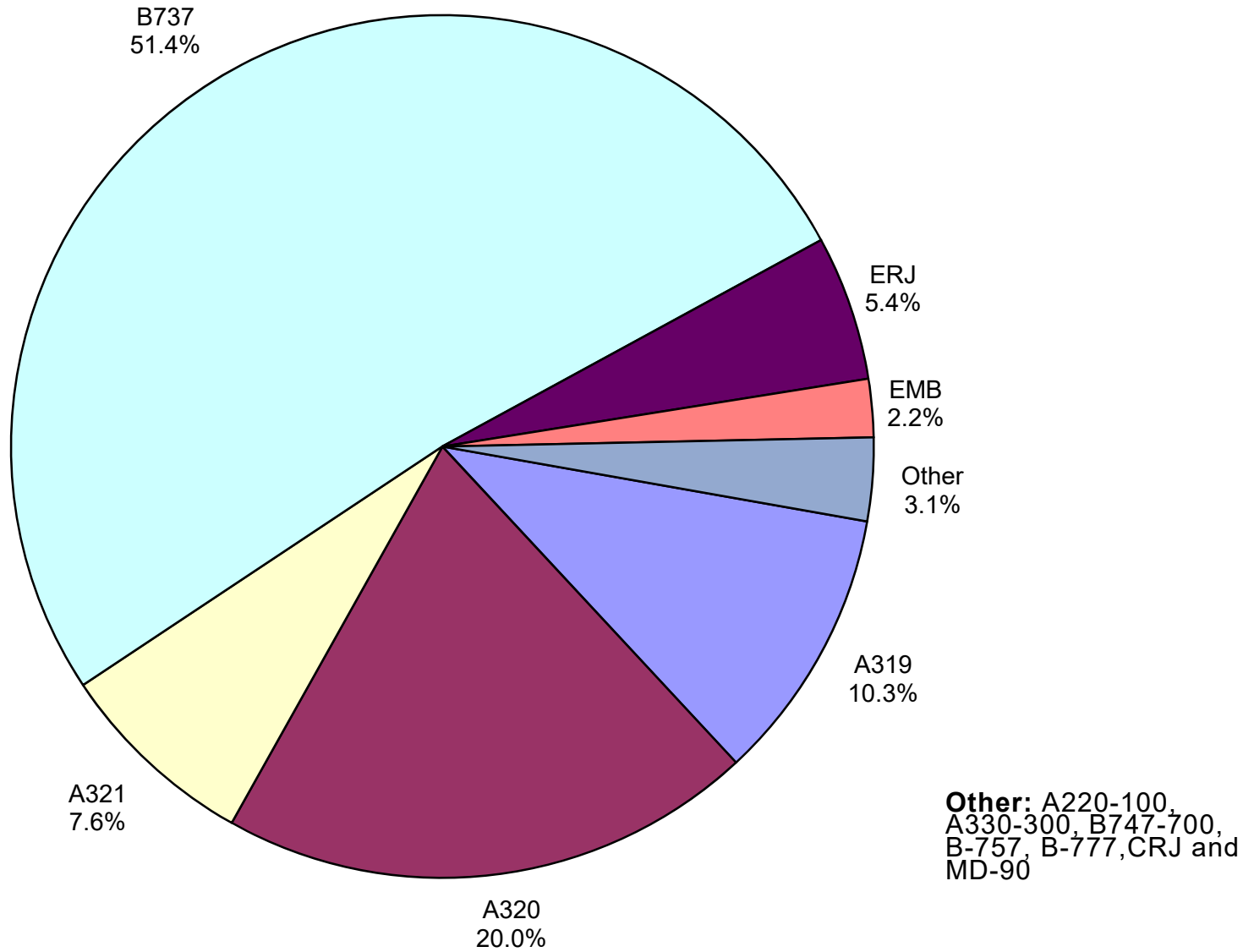


**Other =**

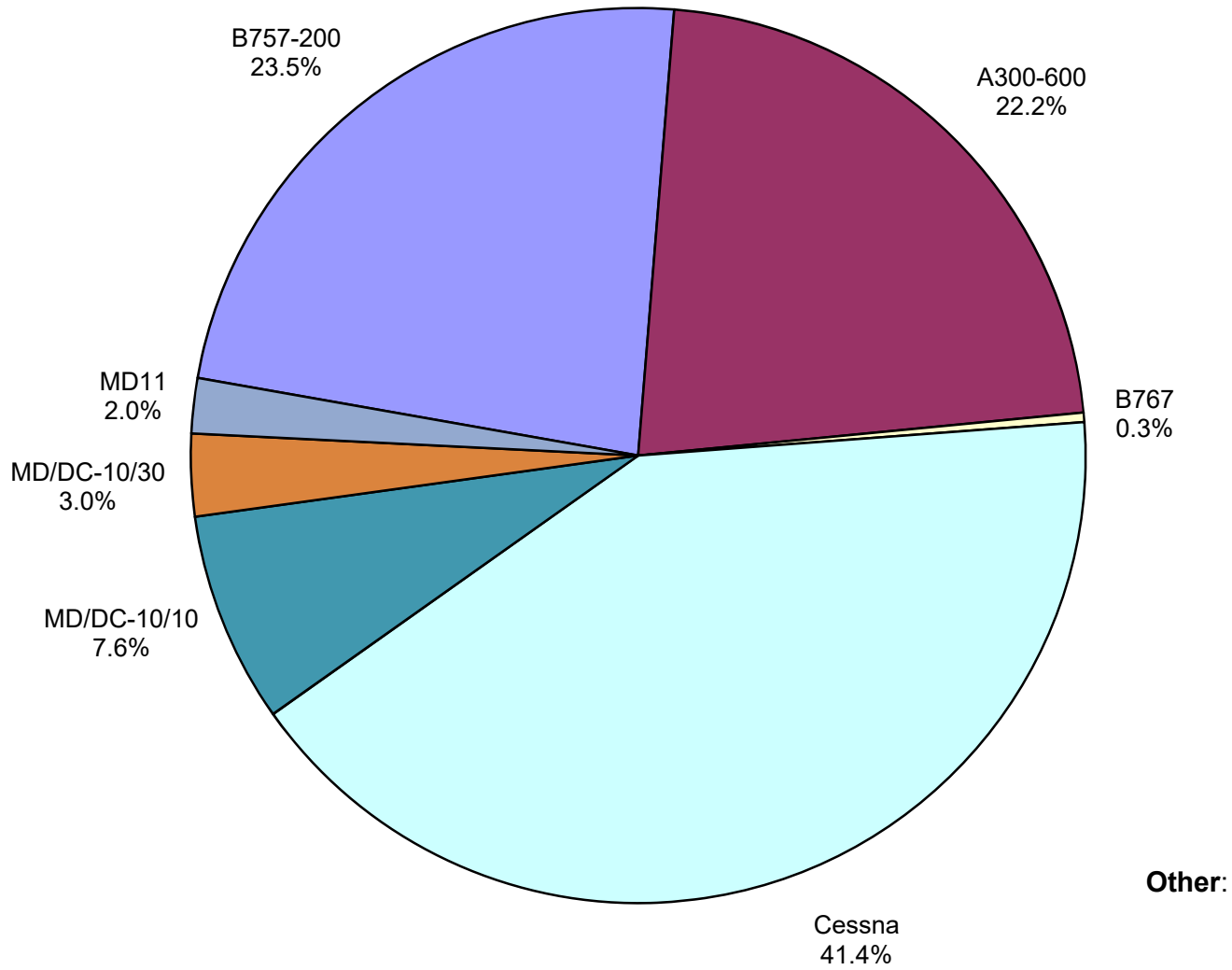
# Air Cargo Market Share December 2019



**AUS Scheduled Passenger Aircraft Fleet Mix  
December 2019**



**AUS Scheduled Cargo Aircraft Fleet Mix  
December 2019**



# Austin-Bergstrom International Airport

## PAX Detail Report - December, 2019

Company	12/2019	12/2018	Period		YTD 2019	YTD 2018	YTD		2019 Share	2018 Share	Share Diff
			Difference	Change			Difference	Change			
ABC Aerolineas S.A. de C.V.	0	0	0	0.0	0	129	-129	-100.0	0.0	0.0	0.0
Aerovías de Mexico S.A. de C.V.	4,877	4,259	618	14.5	48,063	43,657	4,406	10.1	0.3	0.3	0.0
Air Canada	4,575	4,535	40	0.9	70,672	49,126	21,546	43.9	0.4	0.3	0.1
Air New Zealand	0	0	0	0.0	302	0	302	0.0	0.0	0.0	0.0
Alaska Airlines	61,640	49,513	12,127	24.5	641,880	561,400	80,480	14.3	3.7	3.5	0.2
Allegiant Air	15,717	16,267	-550	-3.4	186,268	276,296	-90,028	-32.6	1.1	1.7	-0.7
American Airlines	264,779	241,349	23,430	9.7	3,092,367	2,836,375	255,992	9.0	17.8	17.9	-0.1
British Airways	14,691	14,146	545	3.9	187,953	171,559	16,394	9.6	1.1	1.1	0.0
Concesionaria Vuela Compañía de Aviación, S.A.P.I. de C.V.	0	279	-279	-100.0	434	14,187	-13,753	-96.9	0.0	0.1	-0.1
Condor Airlines	0	0	0	0.0	0	18,876	-18,876	-100.0	0.0	0.1	-0.1
Delta Air Lines	200,023	162,117	37,906	23.4	2,362,284	2,098,980	263,304	12.5	13.6	13.3	0.4
Deutsche Lufthansa AG	9,132	0	9,132	0.0	67,307	0	67,307	0.0	0.4	0.0	0.4
Frontier Airlines	54,713	57,186	-2,473	-4.3	887,606	1,128,941	-241,335	-21.4	5.1	7.1	-2.0
JetBlue Airways	52,216	45,955	6,261	13.6	574,719	581,032	-6,313	-1.1	3.3	3.7	-0.4
Miami Air International	0	0	0	0.0	2,396	779	1,617	207.6	0.0	0.0	0.0
Norwegian Air UK LTD	0	0	0	0.0	62,435	54,123	8,312	15.4	0.4	0.3	0.0
Scandinavian Airlines	0	0	0	0.0	423	697	-274	-39.3	0.0	0.0	0.0
Southwest Airlines	499,235	472,344	26,891	5.7	5,844,301	5,584,730	259,571	4.6	33.7	35.3	-1.6
Spirit Airlines	79,592	0	79,592	0.0	772,373	0	772,373	0.0	4.5	0.0	4.5
Sun Country Airlines	2,138	0	2,138	0.0	39,271	25,362	13,909	54.8	0.2	0.2	0.1
Swift Air	0	0	0	0.0	2,729	2,544	185	7.3	0.0	0.0	0.0
United Airlines	207,725	193,618	14,107	7.3	2,481,449	2,334,294	147,155	6.3	14.3	14.8	-0.4
Vacation Express	0	0	0	0.0	1,750	2,758	-1,008	-36.5	0.0	0.0	0.0
VIA Airlines	0	1,567	-1,567	-100.0	3,218	22,950	-19,732	-86.0	0.0	0.1	-0.1
Virgin America	0	0	0	0.0	0	11,117	-11,117	-100.0	0.0	0.1	-0.1
VivaAerobus	0	0	0	0.0	164	0	164	0.0	0.0	0.0	0.0
WestJet	0	0	0	0.0	13,365	0	13,365	0.0	0.1	0.0	0.1
<b>Report Totals</b>	<b>1,471,053</b>	<b>1,263,135</b>	<b>207,918</b>	<b>16.5%</b>	<b>17,343,729</b>	<b>15,819,912</b>	<b>1,523,817</b>	<b>9.6%</b>			

### Statistics Included in Report:

Domestic Passengers:	Enplaned Revenue, Deplaned Revenue, Enplaned Non-Revenue, Deplaned Non-Revenue
International Passengers:	Enplaned Revenue, Deplaned Revenue, Enplaned Non-Revenue, Deplaned Non-Revenue
International Pre-Cleared Passengers:	Enplaned Revenue, Deplaned Revenue, Enplaned Non-Revenue, Deplaned Non-Revenue
South Terminal Domestic Passengers:	Enplaned Revenue, Deplaned Revenue, Enplaned Non-Revenue, Deplaned Non-Revenue



# Austin-Bergstrom International Airport

## Summary Landing Report

### Landing Type: Total

Month	2019		2018		2017		% Change 2019 - 2018		% Change 2018 - 2017	
	Count	Weight	Count	Weight	Count	Weight	Count	Weight	Count	Weight
January	5,348	733,746,679	5,086	688,923,110	4,768	612,688,871	5.15%	6.51%	6.67%	12.44%
February	5,040	692,708,930	4,706	637,500,756	4,357	552,711,639	7.10%	8.66%	8.01%	15.34%
March	5,964	825,483,911	5,643	760,648,260	5,307	685,661,659	5.69%	8.52%	6.33%	10.94%
April	5,899	815,621,798	5,797	793,367,736	5,179	689,402,051	1.76%	2.81%	11.93%	15.08%
May	6,294	881,747,150	6,117	831,431,763	5,529	736,484,083	2.89%	6.05%	10.63%	12.89%
June	6,322	890,410,020	6,211	852,438,818	5,603	752,628,599	1.79%	4.45%	10.85%	13.26%
July	6,551	915,103,306	6,346	869,502,671	5,698	763,088,836	3.23%	5.24%	11.37%	13.95%
August	6,447	906,499,773	6,245	861,046,997	5,490	741,110,019	3.23%	5.28%	13.75%	16.18%
September	6,020	848,899,951	5,737	790,731,351	5,046	679,381,339	4.93%	7.36%	13.69%	16.39%
October	6,459	916,700,076	6,078	846,310,860	5,448	743,973,610	6.27%	8.32%	11.56%	13.76%
November	5,924	836,527,780	5,684	780,994,101	5,289	718,179,948	4.22%	7.11%	7.47%	8.75%
December	6,078	848,973,148	5,600	761,317,385	5,442	737,424,963	8.54%	11.51%	2.90%	3.24%
<b>Totals for Selected Period</b>	72,346	10,112,422,522	69,250	9,474,213,808	63,156	8,412,735,617	4.47%	6.74%	9.65%	12.62%
<b>Yearly Totals</b>	72,346	10,112,422,522	69,250	9,474,213,808	63,156	8,412,735,617			9.65%	12.62%