

**Austin-Bergstrom International Airport
Aviation Activity Report
Calendar Year 2019 vs 2018**

Combined Terminals

	11/2019	11/2018	Percent Change	1/2019 - 11/2019	1/2018 - 11/2018	Percent Change
ABIA						
Total Passenger Activity						
Domestic Enplaned Revenue	658,192	629,444	4.57	7,039,434	6,756,690	4.18
Domestic Deplaned Revenue	641,949	626,455	2.47	7,035,415	6,761,641	4.05
International Enplaned Revenue	17,514	11,223	56.05	199,919	177,890	12.38
International Deplaned Revenue	16,730	11,482	45.71	207,067	182,398	13.52
Domestic Enplaned Non-Revenue	12,668	12,384	2.29	154,032	160,329	-3.93
Domestic Deplaned Non-Revenue	12,333	12,269	0.52	147,482	153,873	-4.15
International Enplaned Non-Revenue	166	101	64.36	1,551	1,352	14.72
International Deplaned Non-Revenue	165	89	85.39	1,652	1,157	42.78
Intl Enplaned Pre-Cleared Revenue	2,908	2,192	32.66	39,537	21,067	87.67
Intl Deplaned Pre-Cleared Revenue	2,463	2,432	1.27	38,939	22,837	70.51
Intl Enplaned Pre-Cleared Non-Revenue	36	30	20.00	486	337	44.21
Intl Deplaned Pre-Cleared Non-Revenue	36	30	20.00	500	350	42.86
South Terminal Domestic Enplaned Revenue	44,136	26,119	68.98	500,444	157,840	217.06
South Terminal Domestic Deplaned Revenue	43,874	26,206	67.42	502,607	158,764	216.57
South Terminal Domestic Enplaned Non-Revenue	126	56	125.00	1,625	111	1,363.96
South Terminal Domestic Deplaned Non-Revenue	121	69	75.36	1,986	141	1,308.51
ABIA Passenger Totals	1,453,417	1,360,581	6.82	15,872,676	14,556,777	9.04
<i>ABIA Enplaned Passenger Totals</i>	<i>735,746</i>	<i>681,549</i>	<i>7.95</i>	<i>7,937,028</i>	<i>7,275,616</i>	<i>9.09</i>
<i>ABIA Deplaned Passenger Totals</i>	<i>717,671</i>	<i>679,032</i>	<i>5.69</i>	<i>7,935,648</i>	<i>7,281,161</i>	<i>8.99</i>
<i>ABIA Domestic Passenger Totals</i>	<i>1,413,399</i>	<i>1,333,002</i>	<i>6.03</i>	<i>15,383,025</i>	<i>14,149,389</i>	<i>8.72</i>
<i>ABIA International Passenger Totals</i>	<i>40,018</i>	<i>27,579</i>	<i>45.10</i>	<i>489,651</i>	<i>407,388</i>	<i>20.19</i>
CURRENT PASSENGER RECORD = 1,643,016 RECORD SET = JULY 2019						
Total Aircraft Operations						
Air Carrier	11,726	11,048	6.14	130,214	123,482	5.45
Commuter & Air Taxi	1,491	1,532	-2.68	14,718	16,199	-9.14
Military	405	681	-40.53	7,621	9,113	-16.37
General Aviation						
Itinerant	3,986	4,225	-5.66	39,373	43,668	-9.84
Local	256	42	509.52	842	1,323	-36.36
Total G.A.	4,242	4,267	-0.59	40,215	44,991	-10.62
Total Operations	17,864	17,528	1.92	192,768	193,785	-0.52

**Austin-Bergstrom International Airport
Aviation Activity Report
Calendar Year 2019 vs 2018**

By Terminal

	11/2019	11/2018	Percent Change	1/2019 - 11/2019	1/2018 - 11/2018	Percent Change
<u>Barbara Jordan Terminal (BJT)</u>						
Passenger Activity						
Domestic Enplaned Revenue	658,192	629,444	4.57	7,039,434	6,756,690	4.18
Domestic Deplaned Revenue	641,949	626,455	2.47	7,035,415	6,761,641	4.05
International Enplaned Revenue	17,514	11,223	56.05	199,919	177,890	12.38
International Deplaned Revenue	16,730	11,482	45.71	207,067	182,398	13.52
Domestic Enplaned Non-Revenue	12,668	12,384	2.29	154,032	160,329	-3.93
Domestic Deplaned Non-Revenue	12,333	12,269	0.52	147,482	153,873	-4.15
International Enplaned Non-Revenue	166	101	64.36	1,551	1,352	14.72
International Deplaned Non-Revenue	165	89	85.39	1,652	1,157	42.78
Intl Enplaned Pre-Cleared Revenue	2,908	2,192	32.66	39,537	21,067	87.67
Intl Deplaned Pre-Cleared Revenue	2,463	2,432	1.27	38,939	22,837	70.51
Intl Enplaned Pre-Cleared Non-Revenue	36	30	20.00	486	337	44.21
Intl Deplaned Pre-Cleared Non-Revenue	36	30	20.00	500	350	42.86
Barbara Jordan Terminal Passenger Totals	1,365,160	1,308,131	4.36	14,866,014	14,239,921	4.40
<i>BJT Enplaned Passenger Totals</i>	<i>691,484</i>	<i>655,374</i>	<i>5.51</i>	<i>7,434,959</i>	<i>7,117,665</i>	<i>4.46</i>
<i>BJT Deplaned Passenger Totals</i>	<i>673,676</i>	<i>652,757</i>	<i>3.20</i>	<i>7,431,055</i>	<i>7,122,256</i>	<i>4.34</i>
<i>BJT Domestic Passenger Totals</i>	<i>1,325,142</i>	<i>1,280,552</i>	<i>3.48</i>	<i>14,376,363</i>	<i>13,832,533</i>	<i>3.93</i>
<i>BJT International Passenger Totals</i>	<i>40,018</i>	<i>27,579</i>	<i>45.10</i>	<i>489,651</i>	<i>407,388</i>	<i>20.19</i>
<u>South Terminal (ST)</u>						
Passenger Activity						
South Terminal Domestic Enplaned Revenue	44,136	26,119	68.98	500,444	157,840	217.06
South Terminal Domestic Deplaned Revenue	43,874	26,206	67.42	502,607	158,764	216.57
South Terminal Domestic Enplaned Non-Revenue	126	56	125.00	1,625	111	1363.96
South Terminal Domestic Deplaned Non-Revenue	121	69	75.36	1,986	141	1308.51
South Terminal Passenger Totals	88,257	52,450	68.27	1,006,662	316,856	217.70
<i>ST Enplaned Passenger Totals</i>	<i>44,262</i>	<i>26,175</i>	<i>69.10</i>	<i>502,069</i>	<i>157,951</i>	<i>217.86</i>
<i>ST Deplaned Passenger Totals</i>	<i>43,995</i>	<i>26,275</i>	<i>67.44</i>	<i>504,593</i>	<i>158,905</i>	<i>217.54</i>

**Austin-Bergstrom International Airport
Aviation Activity Report
Calendar Year 2019 vs 2018**

	11/2019	11/2018	Percent Change	1/2019 - 11/2019	1/2018 - 11/2018	Percent Change
<u>Total Cargo Activity</u>						
Mail						
Domestic Enplaned Mail	240,327	187,798	27.97	2,106,583	2,190,371	-3.83
Domestic Deplaned Mail	718,291	555,305	29.35	7,410,717	4,802,636	54.31
International Enplaned Mail	0	0	0.00	0	0	0.00
International Deplaned Mail	0	0	0.00	110,830	0	0.00
South Terminal-Domestic Enplaned Mail	0	0	0.00	0	0	0.00
South Terminal-Domestic Deplaned Mail	0	0	0.00	0	0	0.00
Mail Totals	958,618	743,103	29.00	9,628,130	6,993,007	37.68
Cargo						
Domestic Enplaned Cargo	4,965,636	4,822,468	2.97	52,909,242	54,303,545	-2.57
Domestic Deplaned Cargo	7,093,286	6,975,427	1.69	74,680,373	76,577,280	-2.48
International Enplaned Cargo	2,105,227	617,159	241.12	5,857,884	7,662,951	-23.56
International Deplaned Cargo	132,001	138,344	-4.58	2,898,756	3,430,680	-15.50
South Terminal-Domestic Enplaned Cargo	0	0	0.00	0	0	0.00
South Terminal-Domestic Deplaned Cargo	0	0	0.00	0	0	0.00
Cargo Totals	14,296,150	12,553,398	13.88	136,346,255	141,974,456	-3.96
Belly Freight						
Domestic Enplaned Belly Freight	302,400	289,804	4.35	3,465,411	3,292,354	5.26
Domestic Deplaned Belly Freight	460,369	489,199	-5.89	5,620,716	5,427,573	3.56
International Enplaned Belly Freight	455,121	177,324	156.66	3,851,188	2,912,685	32.22
International Deplaned Belly Freight	875,314	897,299	-2.45	7,184,237	6,926,508	3.72
South Terminal-Domestic Enplaned Belly Frght	0	0	0.00	0	0	0.00
South Terminal-Domestic Deplaned Belly Frght	0	0	0.00	0	0	0.00
Belly Freight Totals	2,093,204	1,853,626	12.92	20,121,552	18,559,120	8.42
Cargo Totals (Mail, Cargo, Belly Freight)	17,347,972	15,150,127	14.51	166,095,937	167,526,583	-0.85
<i>Enplaned Cargo Totals</i>	<i>8,068,711</i>	<i>6,094,553</i>	<i>32.39</i>	<i>68,190,308</i>	<i>70,361,906</i>	<i>-3.09</i>
<i>Deplaned Cargo Totals</i>	<i>9,279,261</i>	<i>9,055,574</i>	<i>2.47</i>	<i>97,905,629</i>	<i>97,164,677</i>	<i>0.76</i>
<i>Domestic Cargo Totals</i>	<i>13,780,309</i>	<i>13,320,001</i>	<i>3.46</i>	<i>146,193,042</i>	<i>146,593,759</i>	<i>-0.27</i>
<i>International Cargo Totals</i>	<i>3,567,663</i>	<i>1,830,126</i>	<i>94.94</i>	<i>19,902,895</i>	<i>20,932,824</i>	<i>-4.92</i>

CURRENT CARGO RECORD = 40,215,518

RECORD SET = MARCH 2001

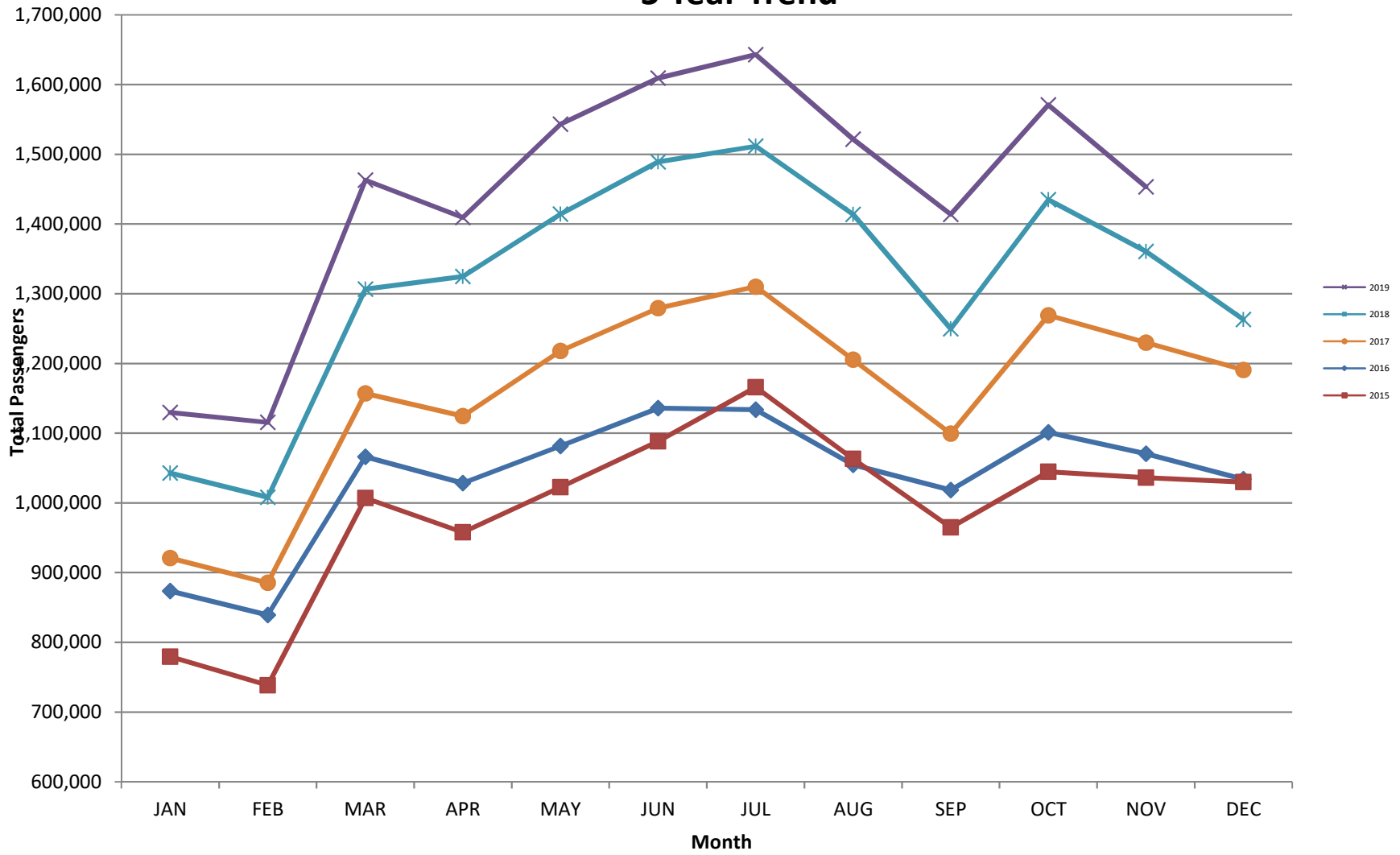
AUS – Airline Codes

November 2019

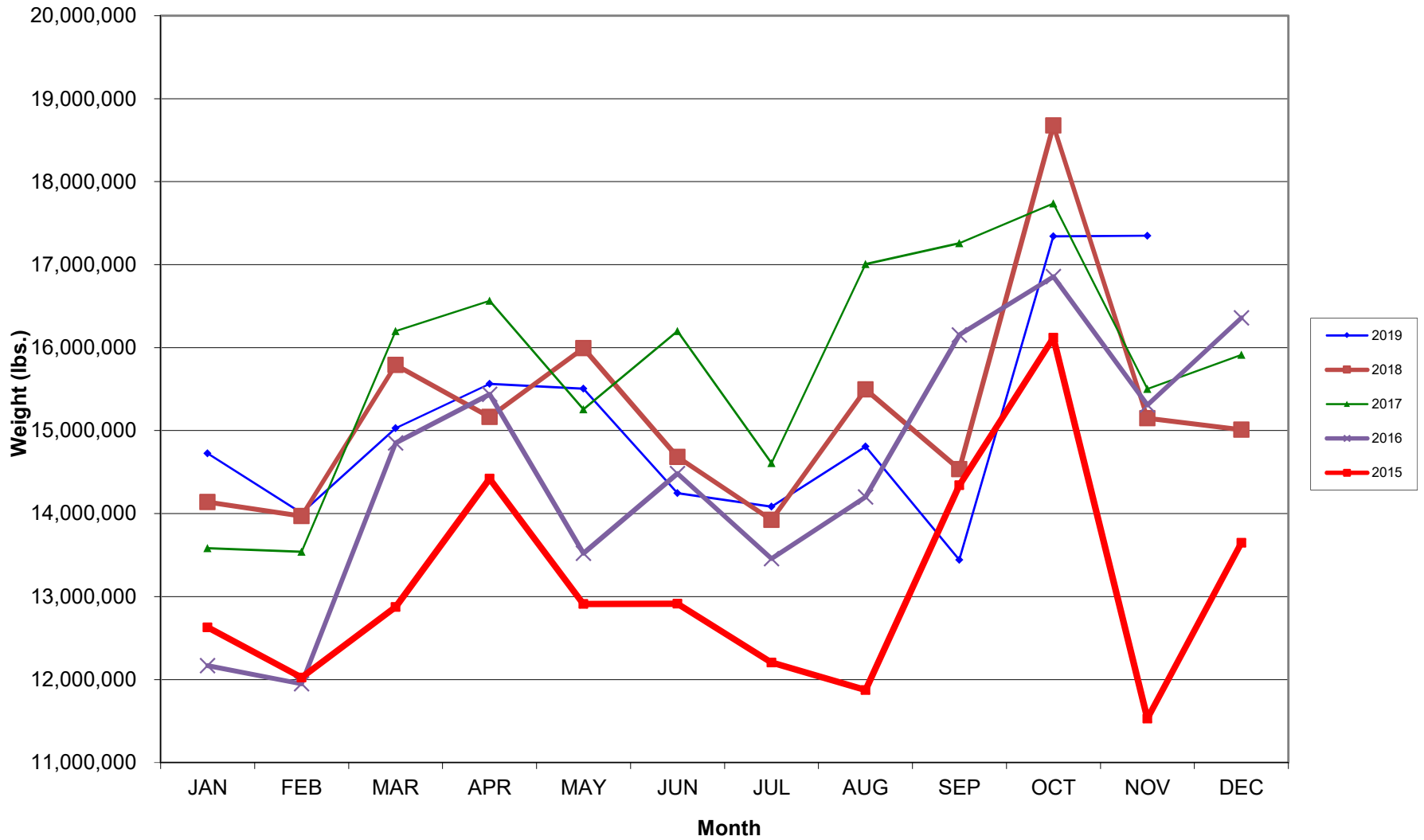
<u>Code</u>	<u>Carrier</u>
AM	Aerovias de Mexico S.A. de C.V. dba AeroMexico Airlines
AC	Air Canada
AS	Alaska Airlines, Inc.
G4	Allegiant Air, LLC
AA	American Airlines, Inc.
BA	British Airways Plc
DL	Delta Airlines
LH	Deutsche Lufthansa AG
F9	Frontier Airlines
B6	JetBlue Airways Corp.
LL	Miami Air International
DY	Norwegian Air UK LTD
WN	Southwest Airlines
NK	Spirit Airlines
SY	Sun Country Airlines
WQ	Swift Air, LLC
UA	United Airlines, Inc.
WS	WestJet Airlines

AUSTIN PASSENGER TRAFFIC

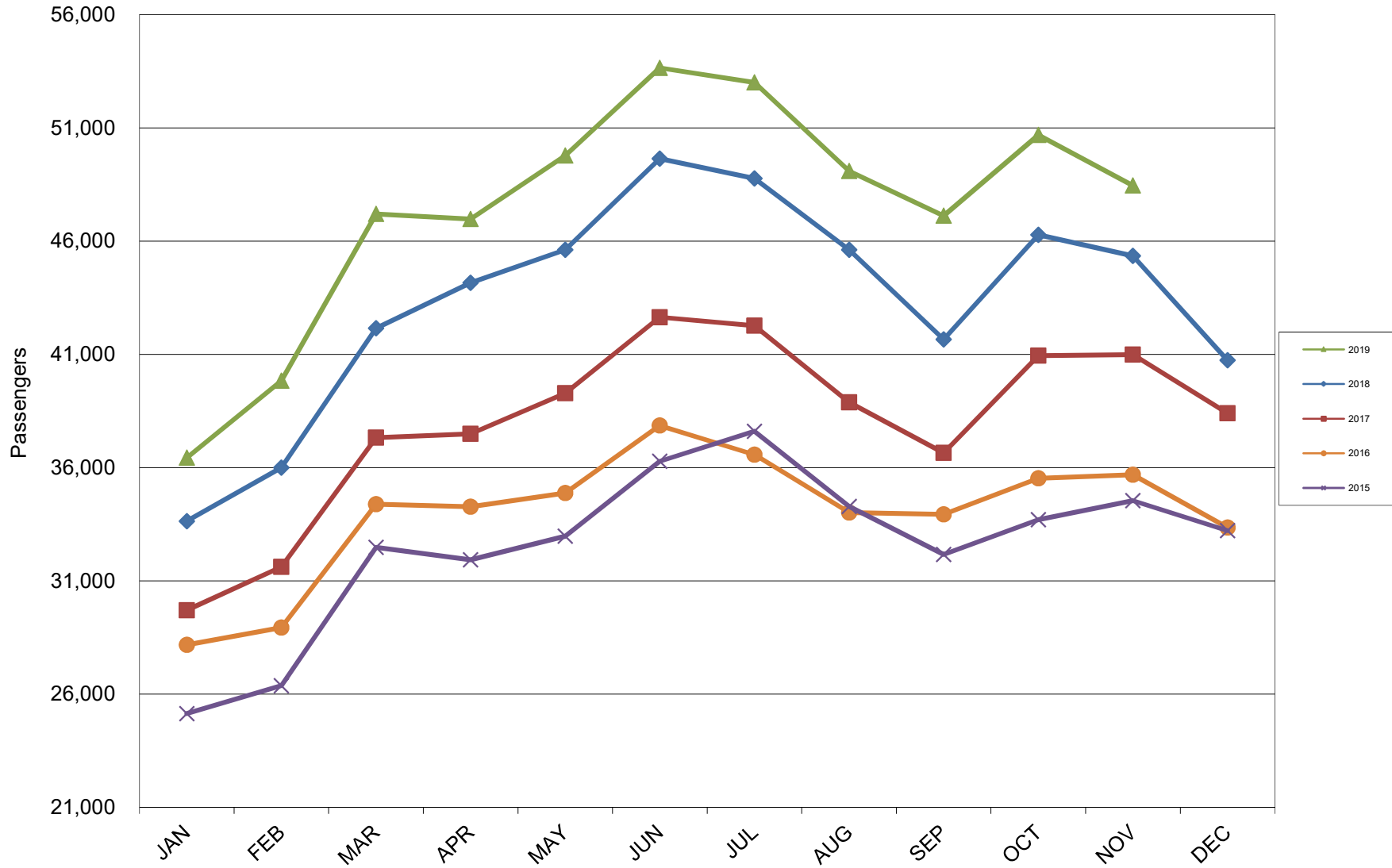
5 Year Trend



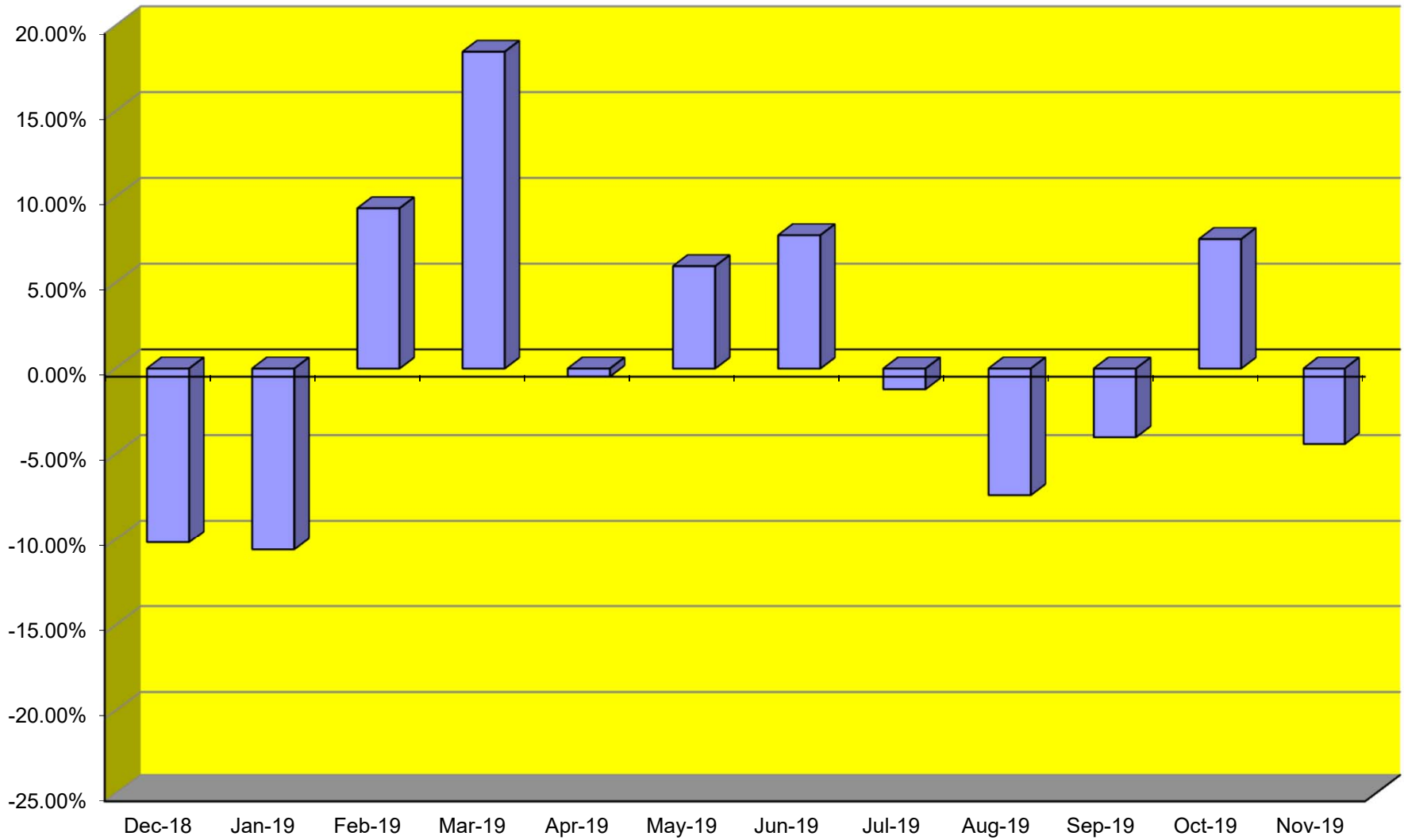
TOTAL CARGO POUNDAGE - AUSTIN, TEXAS



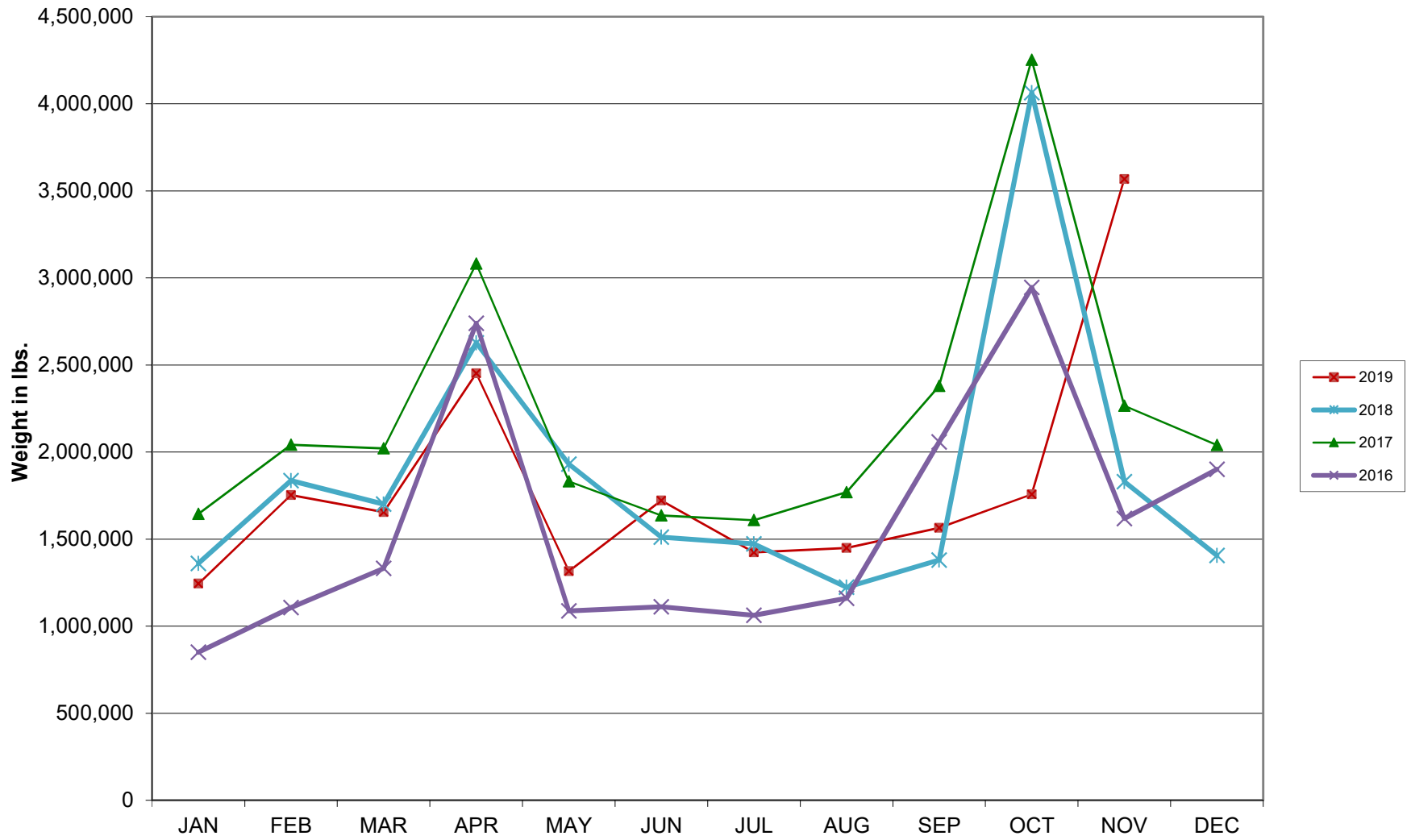
Average Daily Passengers



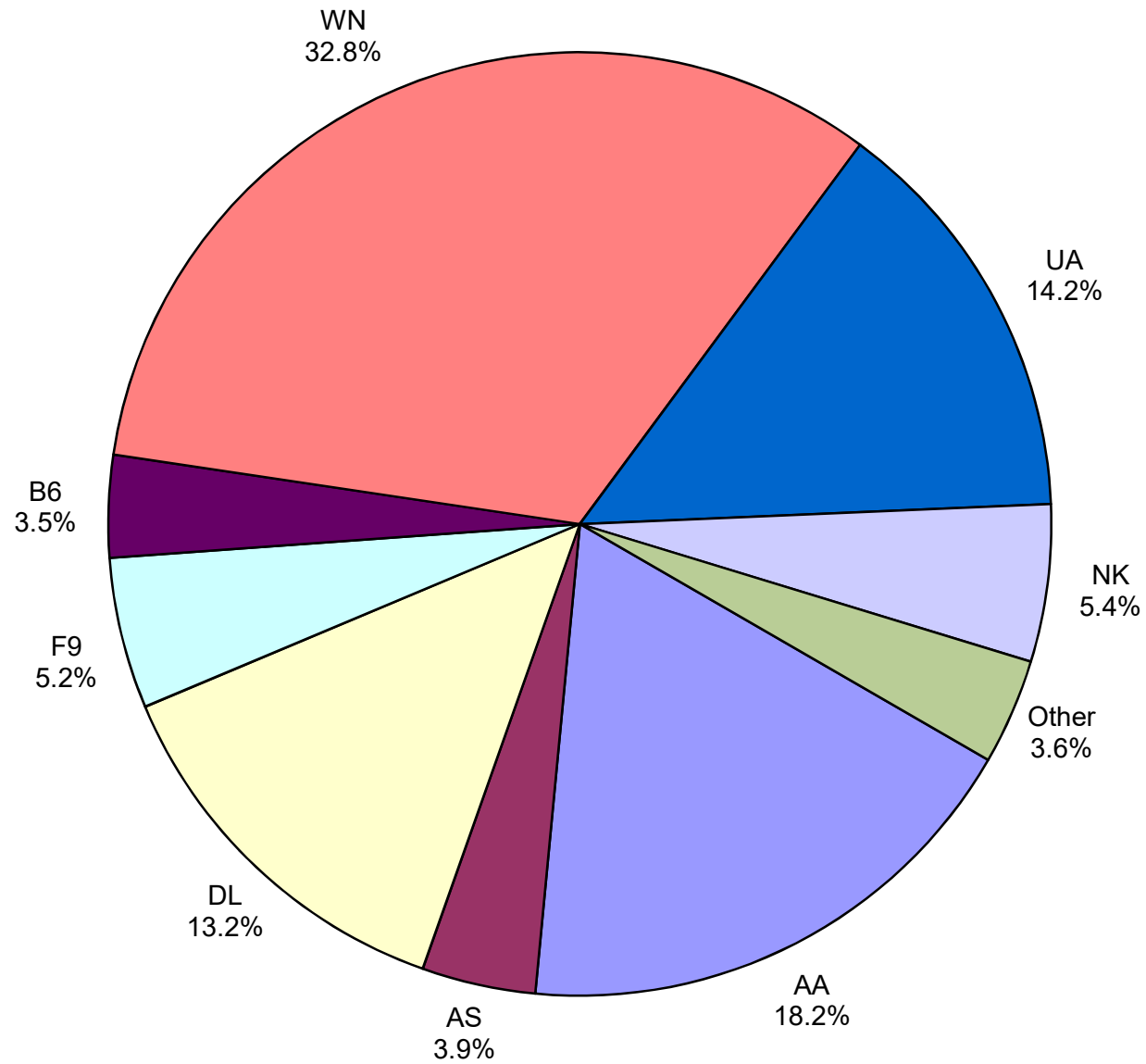
Monthly % Change in Average Daily Passengers



HISTORY OF INTERNATIONAL AIR CARGO



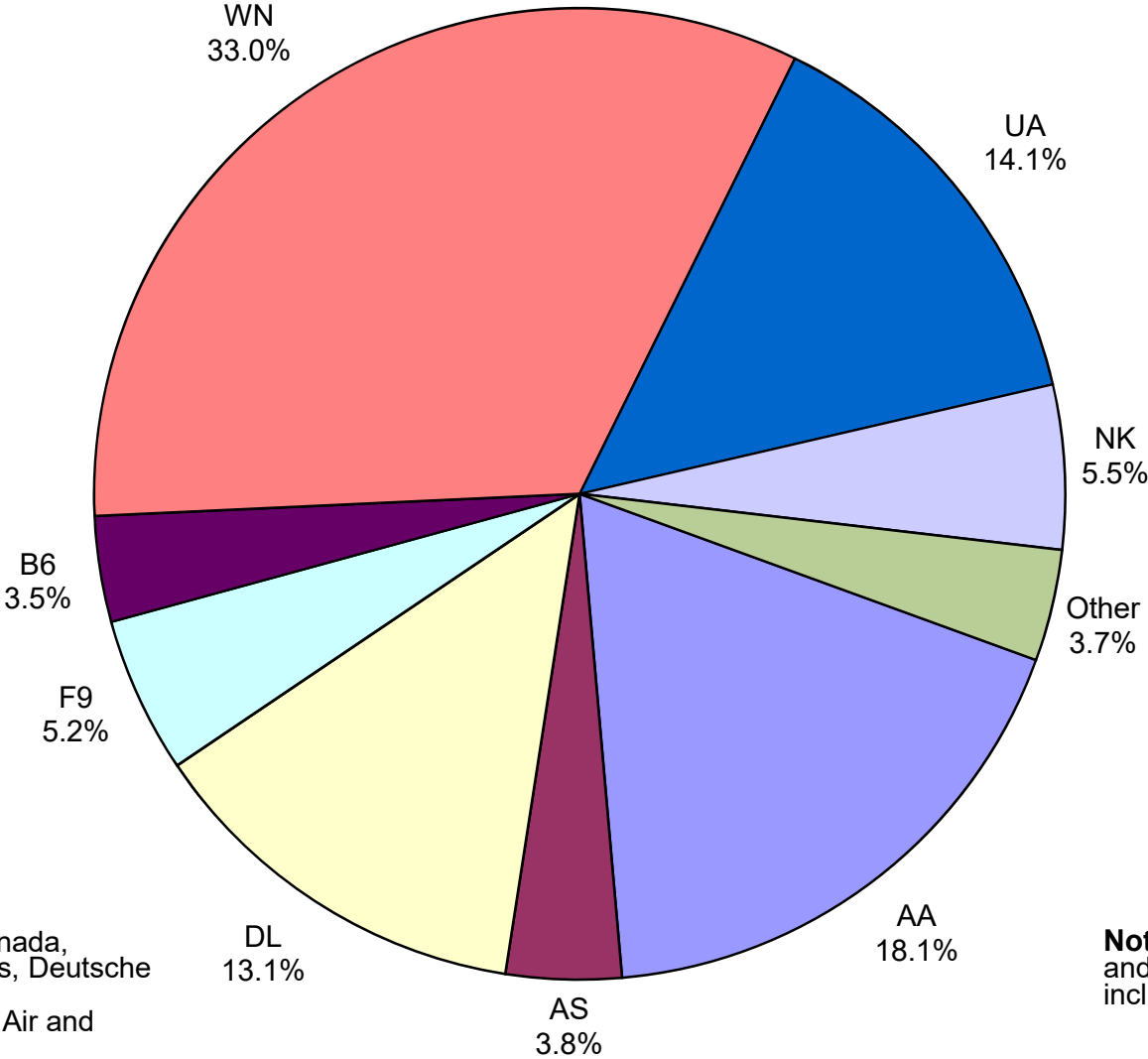
Total Passengers November 2019



Other: Aeromexico, Air Canada LLC, Allegiant Air, British Airways, Deutsche Lufthansa AG, Miami Air, Sun Country, Swift Air and WestJet Airlines

Note: American, Delta and United Airlines percentages include Affiliates.

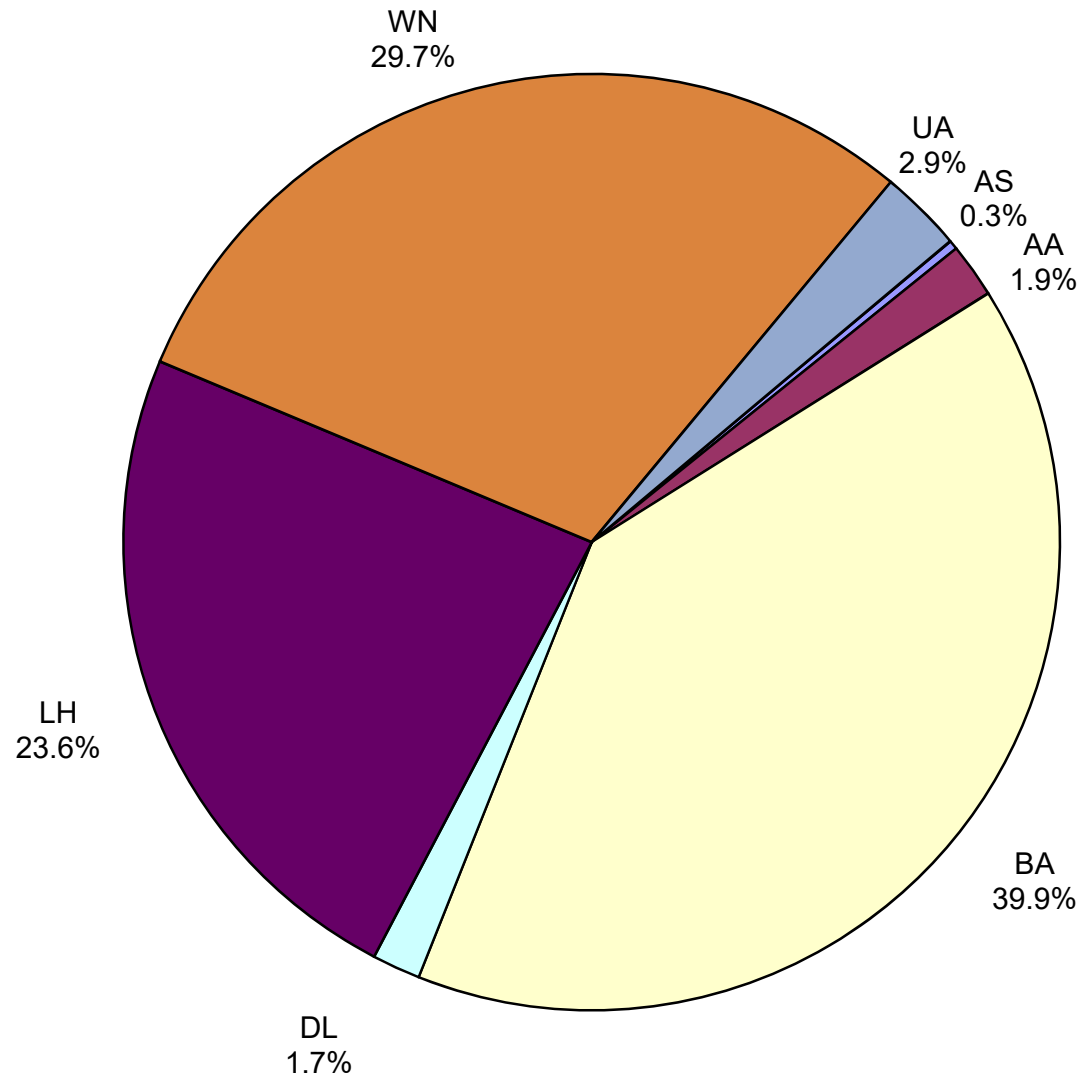
**All Passenger Carriers
Enplaned Revenue Passengers
November 2019**



Other: Aeromexico, Air Canada, Allegiant Air, British Airways, Deutsche Lufthansa AG, Miami Air, Sun Country Airlines, Swift Air and WestJet Airlines

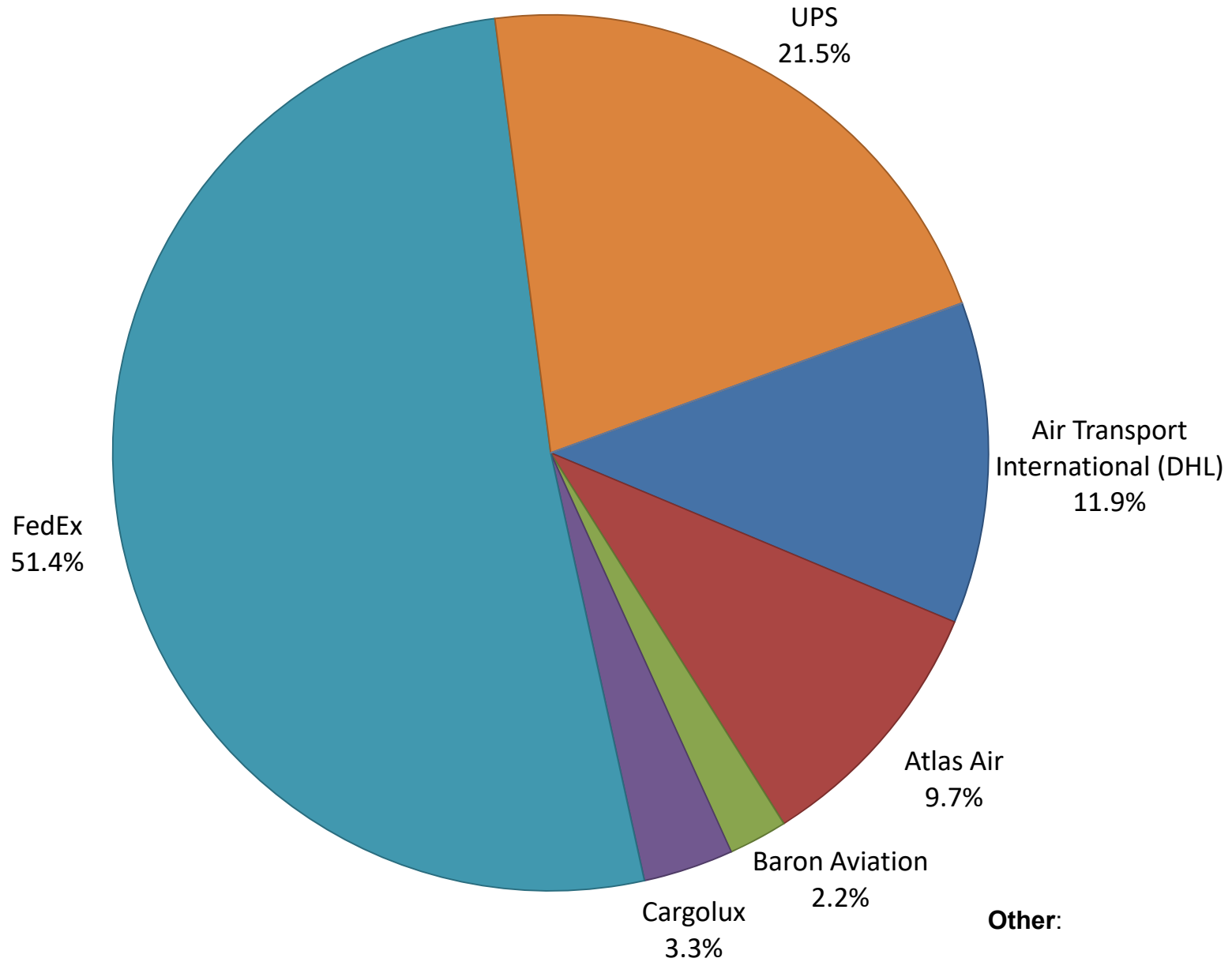
Note: American/US Airways, Delta and United Airlines percentages include Affiliates.

**AUS Belly Freight Market Shares
November 2019**

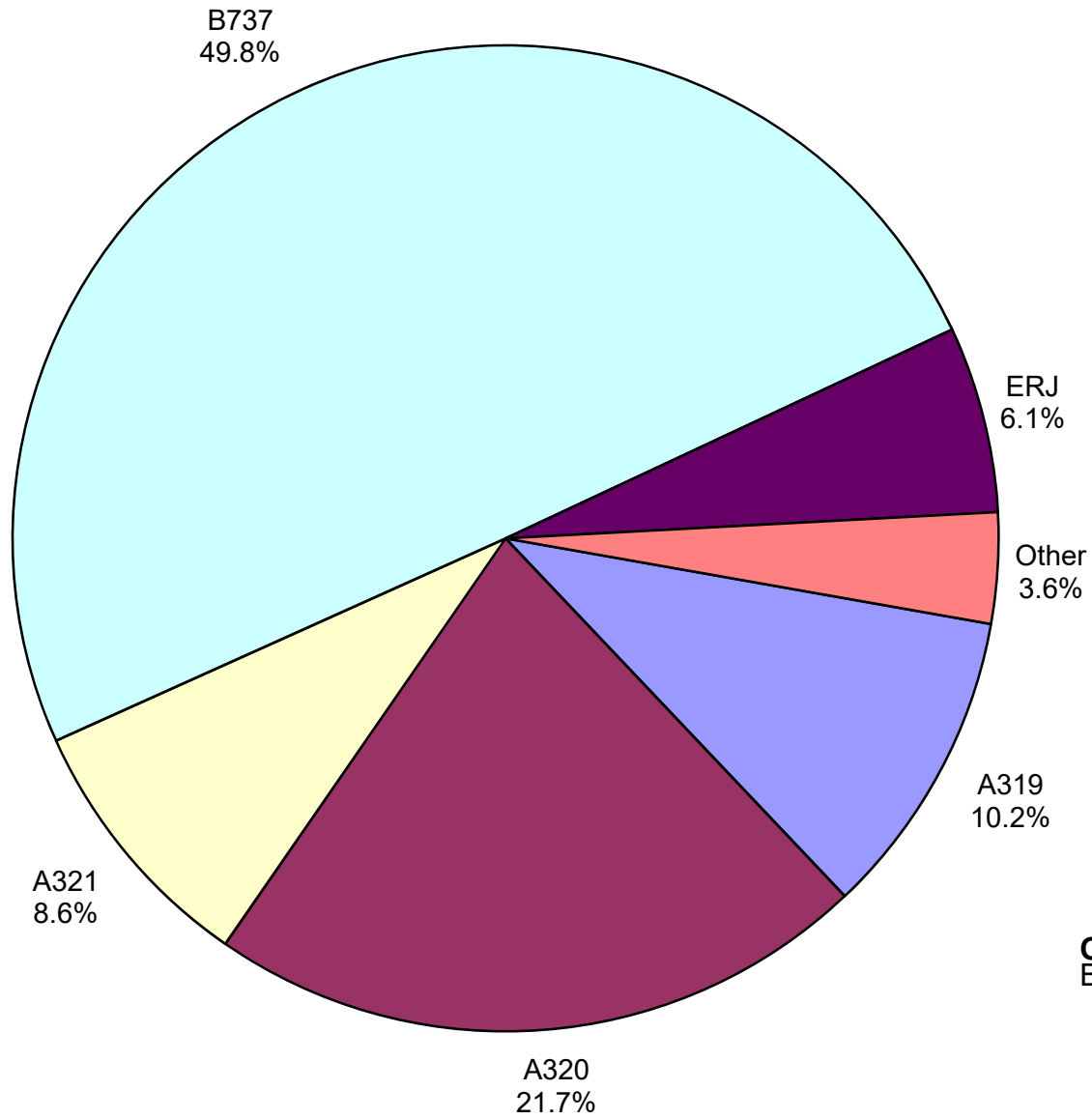


Other =

Air Cargo Market Share November 2019

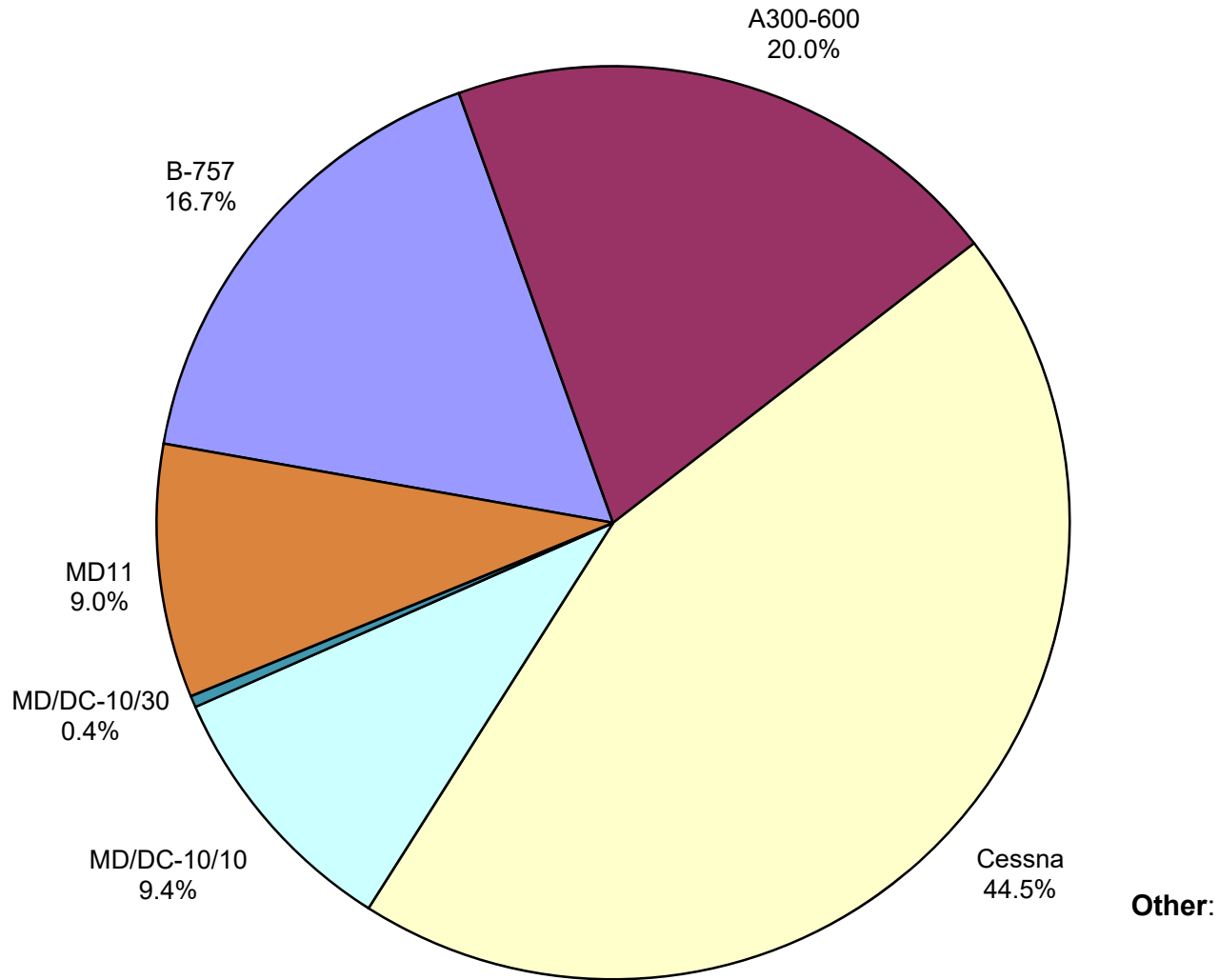


**AUS Scheduled Passenger Aircraft Fleet Mix
November 2019**



Other: A330-300, B-757,
B-777, CRJ and EMB

**AUS Scheduled Cargo Aircraft Fleet Mix
November 2019**



Austin-Bergstrom International Airport

PAX Detail Report - November, 2019

Company	11/2019	11/2018	Period		YTD 2019	YTD 2018	YTD		2019 Share	2018 Share	Share Diff
			Difference	Change			Difference	Change			
ABC Aerolineas S.A. de C.V.	0	0	0	0.0	0	129	-129	-100.0	0.0	0.0	0.0
Aerovías de Mexico S.A. de C.V.	4,880	3,765	1,115	29.6	43,186	39,398	3,788	9.6	0.3	0.3	0.0
Air Canada	4,824	4,684	140	3.0	66,097	44,591	21,506	48.2	0.4	0.3	0.1
Air New Zealand	0	0	0	0.0	302	0	302	0.0	0.0	0.0	0.0
Alaska Airlines	56,744	50,645	6,099	12.0	580,240	511,887	68,353	13.4	3.7	3.5	0.1
Allegiant Air	12,954	16,718	-3,764	-22.5	170,551	260,029	-89,478	-34.4	1.1	1.8	-0.7
American Airlines	264,124	255,523	8,601	3.4	2,827,588	2,595,026	232,562	9.0	17.8	17.8	0.0
British Airways	15,060	13,388	1,672	12.5	173,262	157,413	15,849	10.1	1.1	1.1	0.0
Concesionaria Vuela Compañía de Aviación, S.A.P.I. de C.V.	0	645	-645	-100.0	434	13,908	-13,474	-96.9	0.0	0.1	-0.1
Condor Airlines	0	0	0	0.0	0	18,876	-18,876	-100.0	0.0	0.1	-0.1
Delta Air Lines	192,744	174,001	18,743	10.8	2,162,261	1,936,863	225,398	11.6	13.6	13.3	0.3
Deutsche Lufthansa AG	7,953	0	7,953	0.0	58,175	0	58,175	0.0	0.4	0.0	0.4
Frontier Airlines	75,303	90,542	-15,239	-16.8	832,893	1,071,755	-238,862	-22.3	5.2	7.4	-2.1
JetBlue Airways	50,930	45,020	5,910	13.1	522,503	535,077	-12,574	-2.3	3.3	3.7	-0.4
Miami Air International	981	0	981	0.0	2,396	779	1,617	207.6	0.0	0.0	0.0
Norwegian Air UK LTD	0	0	0	0.0	62,435	54,123	8,312	15.4	0.4	0.4	0.0
Scandinavian Airlines	0	0	0	0.0	423	697	-274	-39.3	0.0	0.0	0.0
Southwest Airlines	476,335	499,870	-23,535	-4.7	5,345,066	5,112,386	232,680	4.6	33.7	35.1	-1.4
Spirit Airlines	78,324	0	78,324	0.0	692,781	0	692,781	0.0	4.4	0.0	4.4
Sun Country Airlines	4,487	1,778	2,709	152.4	37,133	25,362	11,771	46.4	0.2	0.2	0.1
Swift Air	882	624	258	41.3	2,729	2,544	185	7.3	0.0	0.0	0.0
United Airlines	206,273	200,827	5,446	2.7	2,273,724	2,140,676	133,048	6.2	14.3	14.7	-0.4
Vacation Express	0	0	0	0.0	1,750	2,758	-1,008	-36.5	0.0	0.0	0.0
VIA Airlines	0	2,551	-2,551	-100.0	3,218	21,383	-18,165	-85.0	0.0	0.1	-0.1
Virgin America	0	0	0	0.0	0	11,117	-11,117	-100.0	0.0	0.1	-0.1
VivaAerobus	0	0	0	0.0	164	0	164	0.0	0.0	0.0	0.0
WestJet	619	0	619	0.0	13,365	0	13,365	0.0	0.1	0.0	0.1
Report Totals	1,453,417	1,360,581	92,836	6.8%	15,872,676	14,556,777	1,315,899	9.0%			

Statistics Included in Report:

Domestic Passengers:	Enplaned Revenue, Deplaned Revenue, Enplaned Non-Revenue, Deplaned Non-Revenue
International Passengers:	Enplaned Revenue, Deplaned Revenue, Enplaned Non-Revenue, Deplaned Non-Revenue
International Pre-Cleared Passengers:	Enplaned Revenue, Deplaned Revenue, Enplaned Non-Revenue, Deplaned Non-Revenue
South Terminal Domestic Passengers:	Enplaned Revenue, Deplaned Revenue, Enplaned Non-Revenue, Deplaned Non-Revenue

Austin-Bergstrom International Airport

Summary Landing Report

Landing Type: Total

Month	2019		2018		2017		% Change 2019 - 2018		% Change 2018 - 2017	
	Count	Weight	Count	Weight	Count	Weight	Count	Weight	Count	Weight
January	5,348	733,746,679	5,086	688,923,110	4,768	612,688,871	5.15%	6.51%	6.67%	12.44%
February	5,040	692,708,930	4,706	637,500,756	4,357	552,711,639	7.10%	8.66%	8.01%	15.34%
March	5,964	825,483,911	5,643	760,648,260	5,307	685,661,659	5.69%	8.52%	6.33%	10.94%
April	5,899	815,621,798	5,797	793,367,736	5,179	689,402,051	1.76%	2.81%	11.93%	15.08%
May	6,294	881,747,150	6,117	831,431,763	5,529	736,484,083	2.89%	6.05%	10.63%	12.89%
June	6,322	890,410,020	6,211	852,438,818	5,603	752,628,599	1.79%	4.45%	10.85%	13.26%
July	6,551	915,103,306	6,346	869,502,671	5,698	763,088,836	3.23%	5.24%	11.37%	13.95%
August	6,447	906,499,773	6,245	861,046,997	5,490	741,110,019	3.23%	5.28%	13.75%	16.18%
September	6,020	848,899,951	5,737	790,731,351	5,046	679,381,339	4.93%	7.36%	13.69%	16.39%
October	6,459	916,700,076	6,078	846,310,860	5,448	743,973,610	6.27%	8.32%	11.56%	13.76%
November	5,924	836,527,780	5,684	780,994,101	5,289	718,179,948	4.22%	7.11%	7.47%	8.75%
December			5,600	761,317,385	5,442	737,424,963			2.90%	3.24%
Totals for Selected Period	66,268	9,263,449,374	63,650	8,712,896,423	57,714	7,675,310,654	4.11%	6.32%	10.29%	13.52%
Yearly Totals	66,268	9,263,449,374	69,250	9,474,213,808	63,156	8,412,735,617			9.65%	12.62%