

**Austin-Bergstrom International Airport  
Aviation Activity Report  
Calendar Year 2018 vs 2017**

**Combined Terminals**

	2/2018	2/2017	Percent Change	1/2018 - 2/2018	1/2017 - 2/2017	Percent Change
<b>ABIA</b>						
<b>Total Passenger Activity</b>						
Domestic Enplaned Revenue	470,066	421,805	11.44	946,103	852,420	10.99
Domestic Deplaned Revenue	469,055	422,699	10.97	963,240	865,430	11.30
International Enplaned Revenue	9,003	8,487	6.08	19,103	18,409	3.77
International Deplaned Revenue	9,682	8,517	13.68	21,500	19,585	9.78
Domestic Enplaned Non-Revenue	12,387	10,423	18.84	25,485	22,369	13.93
Domestic Deplaned Non-Revenue	11,977	10,239	16.97	24,303	21,395	13.59
International Enplaned Non-Revenue	128	69	85.51	225	129	74.42
International Deplaned Non-Revenue	68	81	-16.05	118	135	-12.59
Intl Enplaned Pre-Cleared Revenue	1,466	1,384	5.92	2,957	3,024	-2.22
Intl Deplaned Pre-Cleared Revenue	1,669	1,572	6.17	3,349	3,283	2.01
Intl Enplaned Pre-Cleared Non-Revenue	21	21	0.00	47	46	2.17
Intl Deplaned Pre-Cleared Non-Revenue	19	28	-32.14	38	46	-17.39
South Terminal Domestic Enplaned Revenue	11,264	0	0.00	21,796	0	0.00
South Terminal Domestic Deplaned Revenue	11,241	0	0.00	22,603	0	0.00
South Terminal Domestic Enplaned Non-Revenue	3	0	0.00	9	0	0.00
South Terminal Domestic Deplaned Non-Revenue	3	0	0.00	10	0	0.00
<b>ABIA Passenger Totals</b>	<b>1,008,052</b>	<b>885,325</b>	<b>13.86</b>	<b>2,050,886</b>	<b>1,806,271</b>	<b>13.54</b>
<i>ABIA Enplaned Passenger Totals</i>	<i>504,338</i>	<i>442,189</i>	<i>14.05</i>	<i>1,015,725</i>	<i>896,397</i>	<i>13.31</i>
<i>ABIA Deplaned Passenger Totals</i>	<i>503,714</i>	<i>443,136</i>	<i>13.67</i>	<i>1,035,161</i>	<i>909,874</i>	<i>13.77</i>
<i>ABIA Domestic Passenger Totals</i>	<i>985,996</i>	<i>865,166</i>	<i>13.97</i>	<i>2,003,549</i>	<i>1,761,614</i>	<i>13.73</i>
<i>ABIA International Passenger Totals</i>	<i>22,056</i>	<i>20,159</i>	<i>9.41</i>	<i>47,337</i>	<i>44,657</i>	<i>6.00</i>

**CURRENT PASSENGER RECORD = 1,310,174 RECORD SET = JULY 2017**

**Total Aircraft Operations**

Air Carrier	9,133	8,542	6.92	18,980	17,864	6.25
Commuter & Air Taxi	1,400	1,220	14.75	2,690	2,315	16.20
Military	361	828	-56.40	1,055	1,732	-39.09
General Aviation						
Itinerant	3,088	4,038	-23.53	6,745	8,244	-18.18
Local	104	184	-43.48	165	318	-48.11
Total G.A.	3,192	4,222	-24.40	6,910	8,562	-19.29
<b>Total Operations</b>	<b>14,086</b>	<b>14,812</b>	<b>-4.90</b>	<b>29,635</b>	<b>30,473</b>	<b>-2.75</b>

**Austin-Bergstrom International Airport  
Aviation Activity Report  
Calendar Year 2018 vs 2017**

**By Terminal**

	2/2018	2/2017	Percent Change	1/2018 - 2/2018	1/2017 - 2/2017	Percent Change
<b><u>Barbara Jordan Terminal (BJT)</u></b>						
<b>Passenger Activity</b>						
Domestic Enplaned Revenue	470,066	421,805	11.44	946,103	852,420	10.99
Domestic Deplaned Revenue	469,055	422,699	10.97	963,240	865,430	11.30
International Enplaned Revenue	9,003	8,487	6.08	19,103	18,409	3.77
International Deplaned Revenue	9,682	8,517	13.68	21,500	19,585	9.78
Domestic Enplaned Non-Revenue	12,387	10,423	18.84	25,485	22,369	13.93
Domestic Deplaned Non-Revenue	11,977	10,239	16.97	24,303	21,395	13.59
International Enplaned Non-Revenue	128	69	85.51	225	129	74.42
International Deplaned Non-Revenue	68	81	-16.05	118	135	-12.59
Intl Enplaned Pre-Cleared Revenue	1,466	1,384	5.92	2,957	3,024	-2.22
Intl Deplaned Pre-Cleared Revenue	1,669	1,572	6.17	3,349	3,283	2.01
Intl Enplaned Pre-Cleared Non-Revenue	21	21	0.00	47	46	2.17
Intl Deplaned Pre-Cleared Non-Revenue	19	28	-32.14	38	46	-17.39
<b>Barbara Jordan Terminal Passenger Totals</b>	<b>985,541</b>	<b>885,325</b>	<b>11.32</b>	<b>2,006,468</b>	<b>1,806,271</b>	<b>11.08</b>
<i>BJT Enplaned Passenger Totals</i>	<i>493,071</i>	<i>442,189</i>	<i>11.51</i>	<i>993,920</i>	<i>896,397</i>	<i>10.88</i>
<i>BJT Deplaned Passenger Totals</i>	<i>492,470</i>	<i>443,136</i>	<i>11.13</i>	<i>1,012,548</i>	<i>909,874</i>	<i>11.28</i>
<i>BJT Domestic Passenger Totals</i>	<i>963,485</i>	<i>865,166</i>	<i>11.36</i>	<i>1,959,131</i>	<i>1,761,614</i>	<i>11.21</i>
<i>BJT International Passenger Totals</i>	<i>22,056</i>	<i>20,159</i>	<i>9.41</i>	<i>47,337</i>	<i>44,657</i>	<i>6.00</i>
<b><u>South Terminal (ST)</u></b>						
<b>Passenger Activity</b>						
South Terminal Domestic Enplaned Revenue	11,264	0	0.00	21,796	0	0.00
South Terminal Domestic Deplaned Revenue	11,241	0	0.00	22,603	0	0.00
South Terminal Domestic Enplaned Non-Revenue	3	0	0.00	9	0	0.00
South Terminal Domestic Deplaned Non-Revenue	3	0	0.00	10	0	0.00
<b>South Terminal Passenger Totals</b>	<b>22,511</b>	<b>0</b>	<b>0.00</b>	<b>44,418</b>	<b>0</b>	<b>0.00</b>
<i>ST Enplaned Passenger Totals</i>	<i>11,267</i>	<i>0</i>	<i>0</i>	<i>21,805</i>	<i>0</i>	<i>0</i>
<i>ST Deplaned Passenger Totals</i>	<i>11,244</i>	<i>0</i>	<i>0</i>	<i>22,613</i>	<i>0</i>	<i>0</i>

**Austin-Bergstrom International Airport  
Aviation Activity Report  
Calendar Year 2018 vs 2017**

	2/2018	2/2017	Percent Change	1/2018 - 2/2018	1/2017 - 2/2017	Percent Change
<b><u>Total Cargo Activity</u></b>						
<b>Mail</b>						
Domestic Enplaned Mail	205,270	172,583	18.94	315,797	349,527	-9.65
Domestic Deplaned Mail	368,360	272,751	35.05	781,079	548,369	42.44
International Enplaned Mail	0	0	0.00	0	0	0.00
International Deplaned Mail	0	0	0.00	0	0	0.00
South Terminal-Intl Enplaned Mail	0	0	0.00	0	0	0.00
South Terminal-Intl Deplaned Mail	0	0	0.00	0	0	0.00
<b>Mail Totals</b>	<b>573,630</b>	<b>445,334</b>	<b>28.81</b>	<b>1,096,876</b>	<b>897,896</b>	<b>22.16</b>
<b>Cargo</b>						
Domestic Enplaned Cargo	4,622,182	4,503,768	2.63	9,295,272	8,974,971	3.57
Domestic Deplaned Cargo	6,316,572	5,932,332	6.48	13,211,700	12,371,298	6.79
International Enplaned Cargo	645,915	614,518	5.11	1,144,937	1,237,935	-7.51
International Deplaned Cargo	182,506	220,929	-17.39	336,697	539,731	-37.62
South Terminal-Intl Enplaned Cargo	0	0	0.00	0	0	0.00
South Terminal-Intl Deplaned Cargo	0	0	0.00	0	0	0.00
<b>Cargo Totals</b>	<b>11,767,175</b>	<b>11,271,547</b>	<b>4.40</b>	<b>23,988,606</b>	<b>23,123,935</b>	<b>3.74</b>
<b>Belly Freight</b>						
Domestic Enplaned Belly Freight	214,100	194,125	10.29	513,956	392,048	31.10
Domestic Deplaned Belly Freight	408,520	423,275	-3.49	796,229	802,421	-0.77
International Enplaned Belly Freight	309,357	299,684	3.23	532,769	446,140	19.42
International Deplaned Belly Freight	697,906	906,184	-22.98	1,181,664	1,461,257	-19.13
South Terminal-Intl Enplaned Belly Freight	0	0	0.00	0	0	0.00
South Terminal-Intl Deplaned Belly Freight	0	0	0.00	0	0	0.00
<b>Belly Freight Totals</b>	<b>1,629,883</b>	<b>1,823,268</b>	<b>-10.61</b>	<b>3,024,618</b>	<b>3,101,866</b>	<b>-2.49</b>
<b>Cargo Totals (Mail, Cargo, Belly Freight)</b>	<b>13,970,688</b>	<b>13,540,149</b>	<b>3.18</b>	<b>28,110,100</b>	<b>27,123,697</b>	<b>3.64</b>
<i>Enplaned Cargo Totals</i>	<i>5,996,824</i>	<i>5,784,678</i>	<i>3.67</i>	<i>11,802,731</i>	<i>11,400,621</i>	<i>3.53</i>
<i>Deplaned Cargo Totals</i>	<i>7,973,864</i>	<i>7,755,471</i>	<i>2.82</i>	<i>16,307,369</i>	<i>15,723,076</i>	<i>3.72</i>
<i>Domestic Cargo Totals</i>	<i>12,135,004</i>	<i>11,498,834</i>	<i>5.53</i>	<i>24,914,033</i>	<i>23,438,634</i>	<i>6.29</i>
<i>International Cargo Totals</i>	<i>1,835,684</i>	<i>2,041,315</i>	<i>-10.07</i>	<i>3,196,067</i>	<i>3,685,063</i>	<i>-13.27</i>

CURRENT CARGO RECORD = 40,215,518

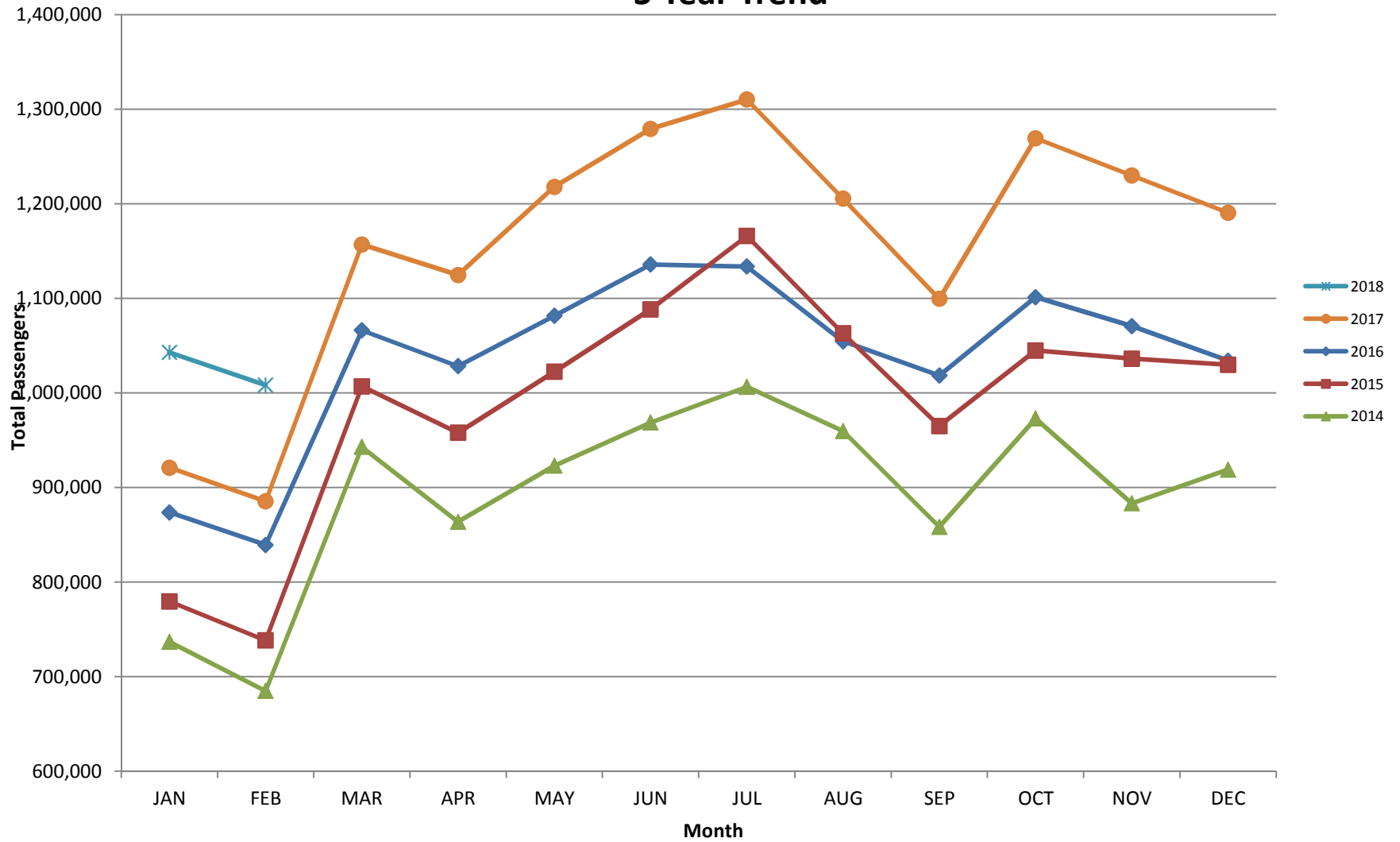
RECORD SET = MARCH 2001

**AUS – Airline Codes**  
February 2018

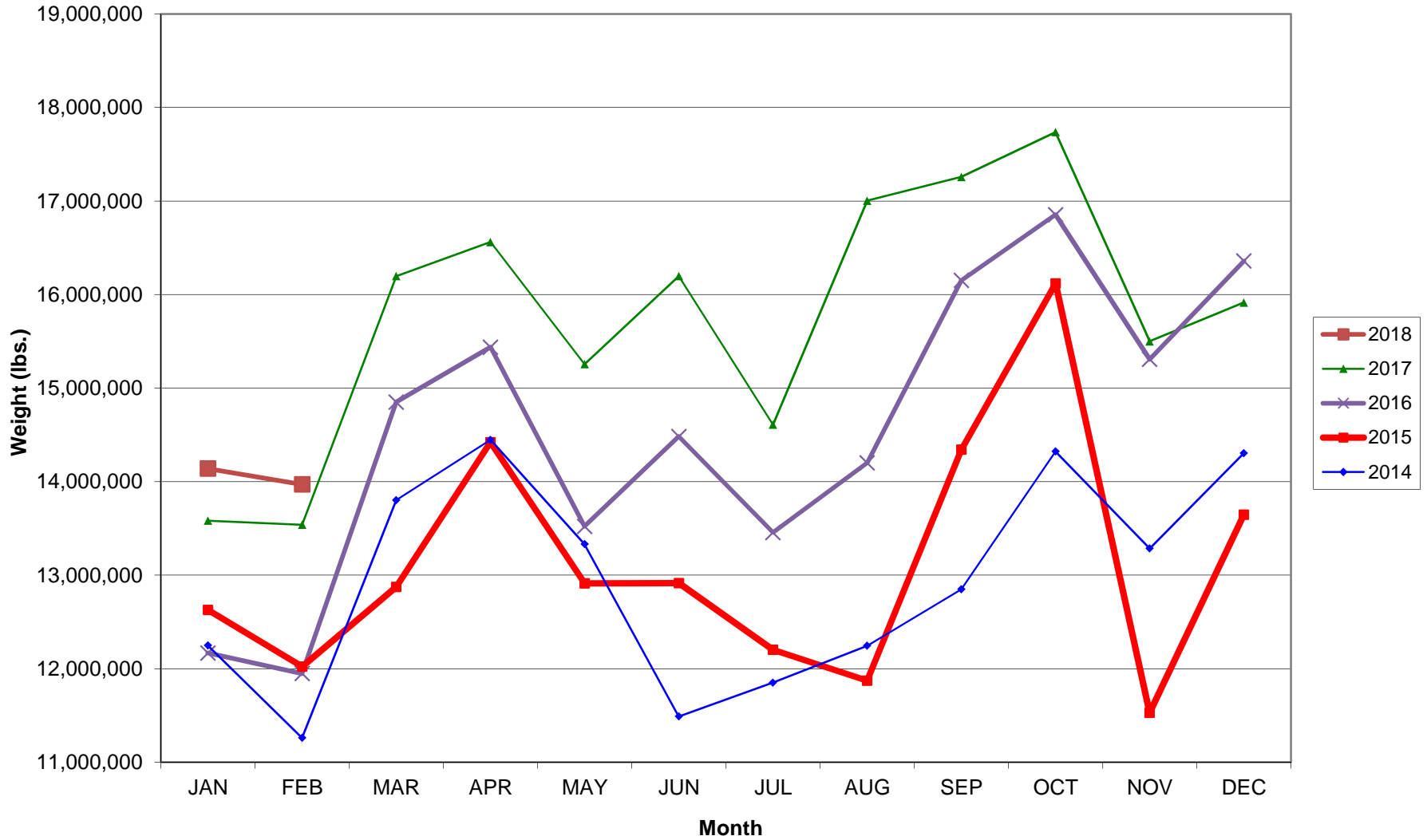
<b><u>Code</u></b>	<b><u>Carrier</u></b>
AM	Aerovias de Mexico S.A. de C.V. dba AeroMexico Airlines
AC	Air Canada
AS	Alaska Airlines, Inc. (Includes Virgin America. Merger effective 2/1/2018)
G4	Allegiant Air, LLC
AA	American Airlines, Inc.
BA	British Airways Plc
Y4	Concesionaria Vuela Compañía de Aviación, S.A.P.I. de C.V dba Volaris
DL	Delta Airlines
F9	Frontier Airlines
B6	JetBlue Airways Corp.
WN	Southwest Airlines
SY	Sun Country Airlines/ MN Airlines, LLC
UA	United Airlines, Inc.
VC	VIA Airlines

# AUSTIN PASSENGER TRAFFIC

## 5 Year Trend

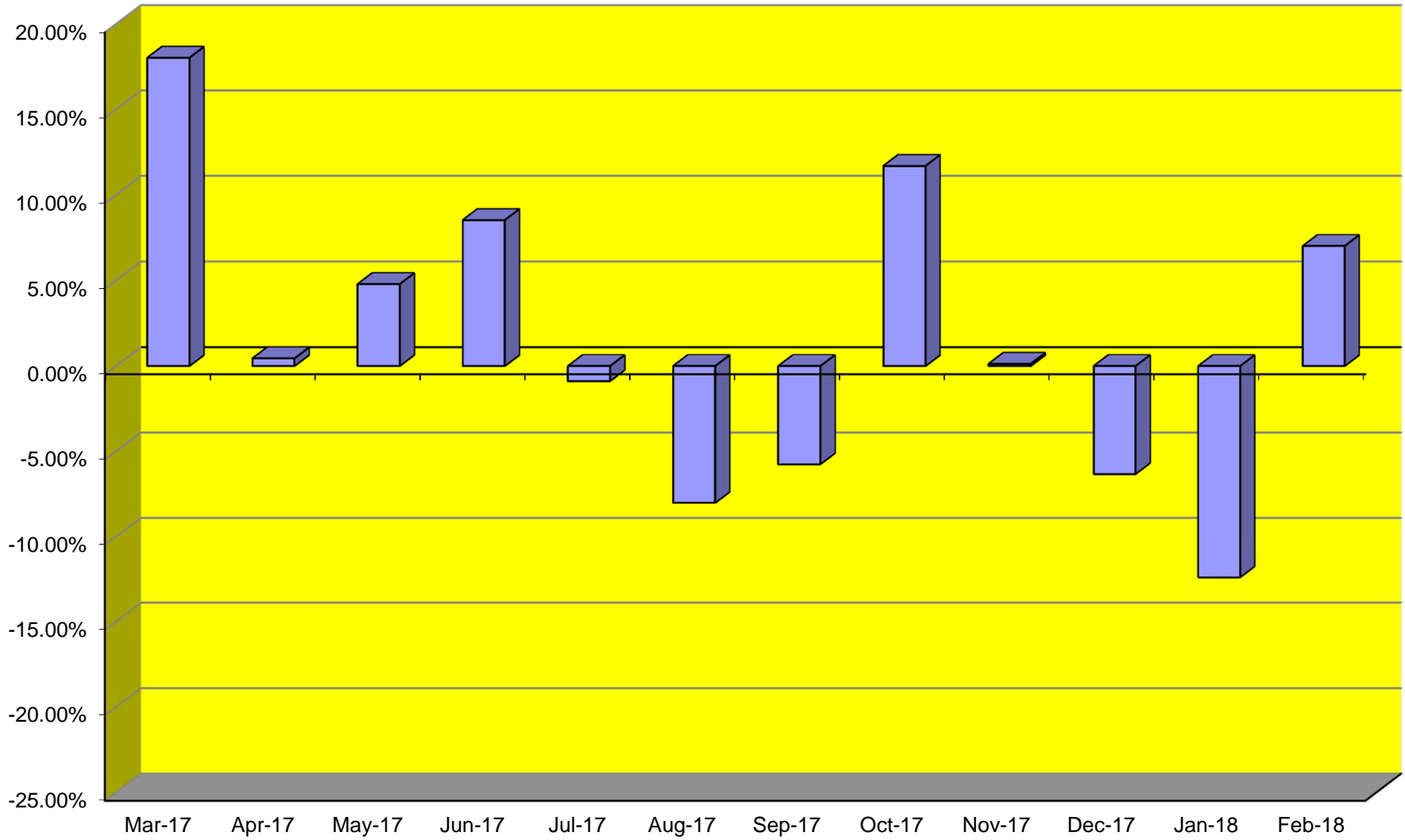


### TOTAL CARGO POUNDAGE - AUSTIN, TEXAS



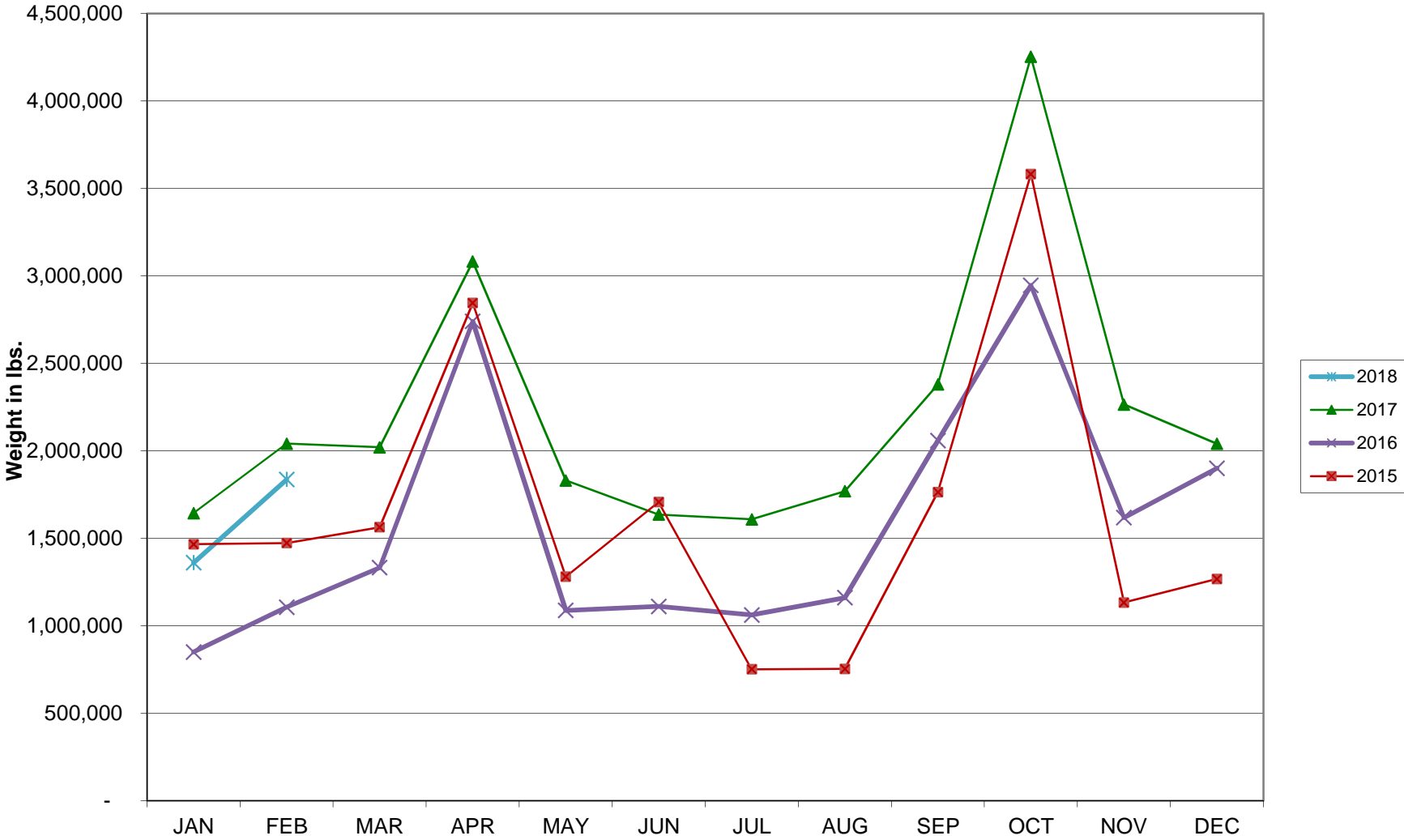


**Monthly % Change in Average Daily Passengers**

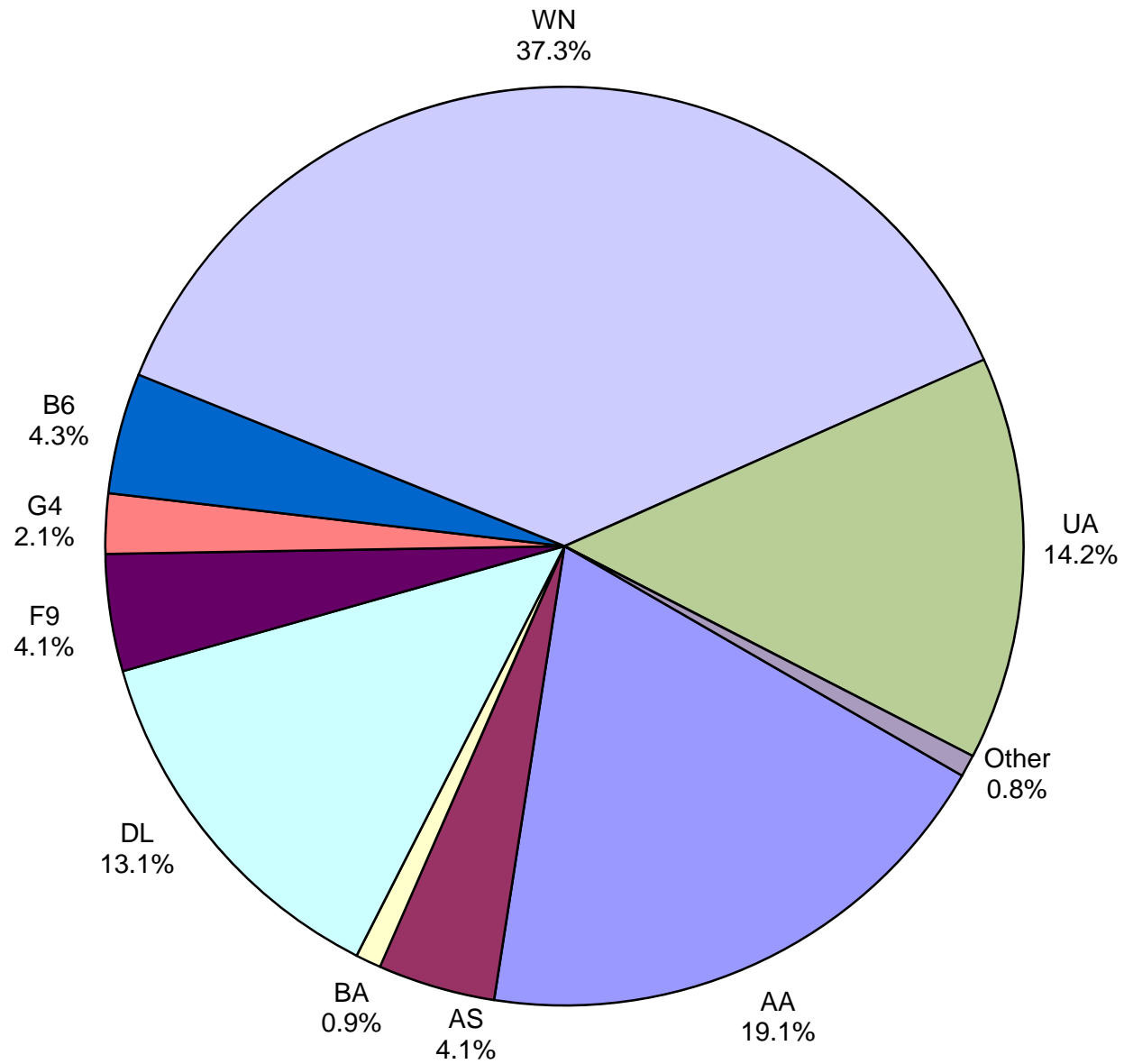




# HISTORY OF INTERNATIONAL AIR CARGO



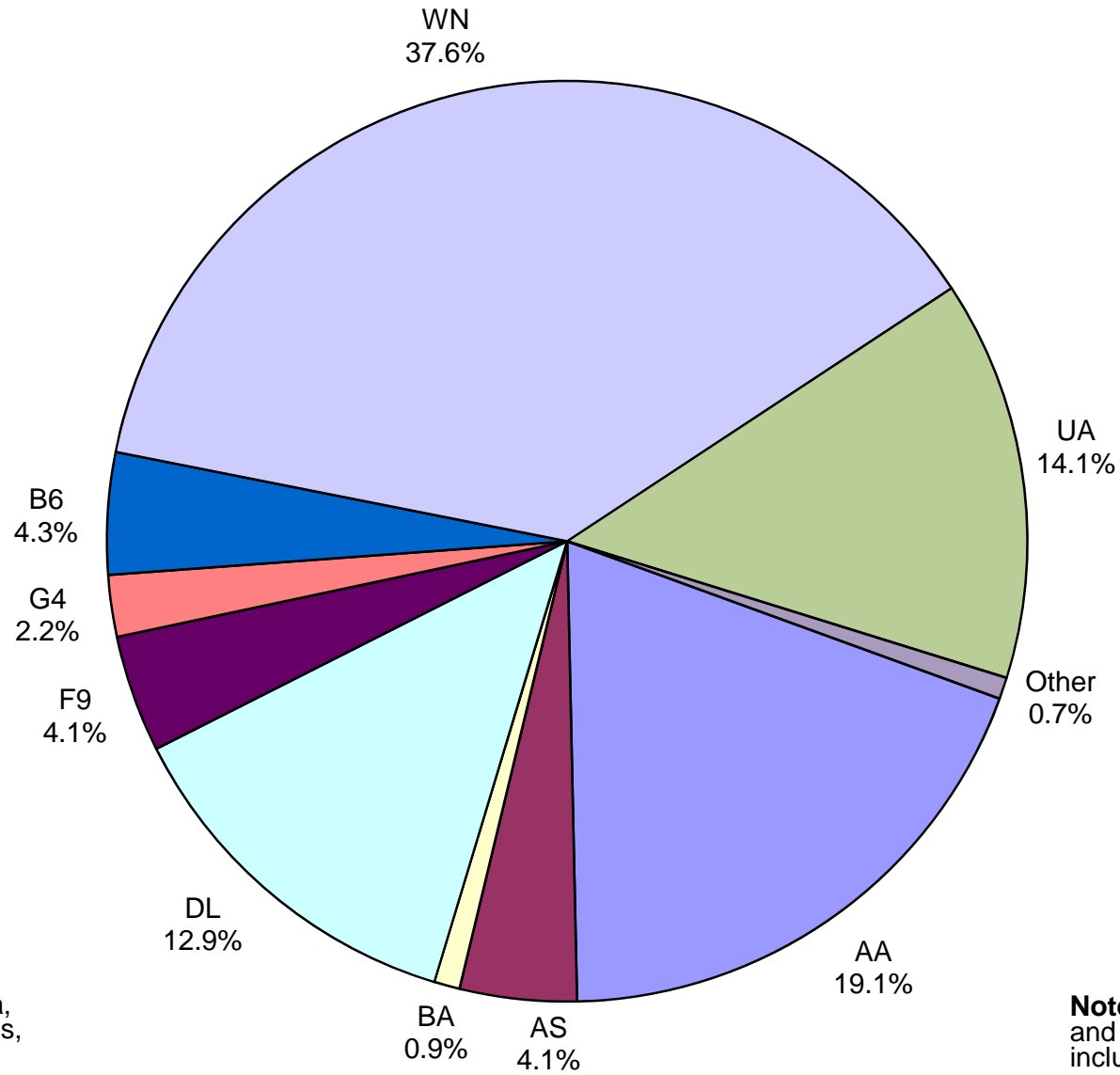
**Total Passengers  
February 2018**



**Other:** Aeromexico, Air Canada LLC, Sun Country, VIA Airlines and Concesionaria Vuela dba Volaris

**Note:** American, Delta and United Airlines percentages include Affiliates.

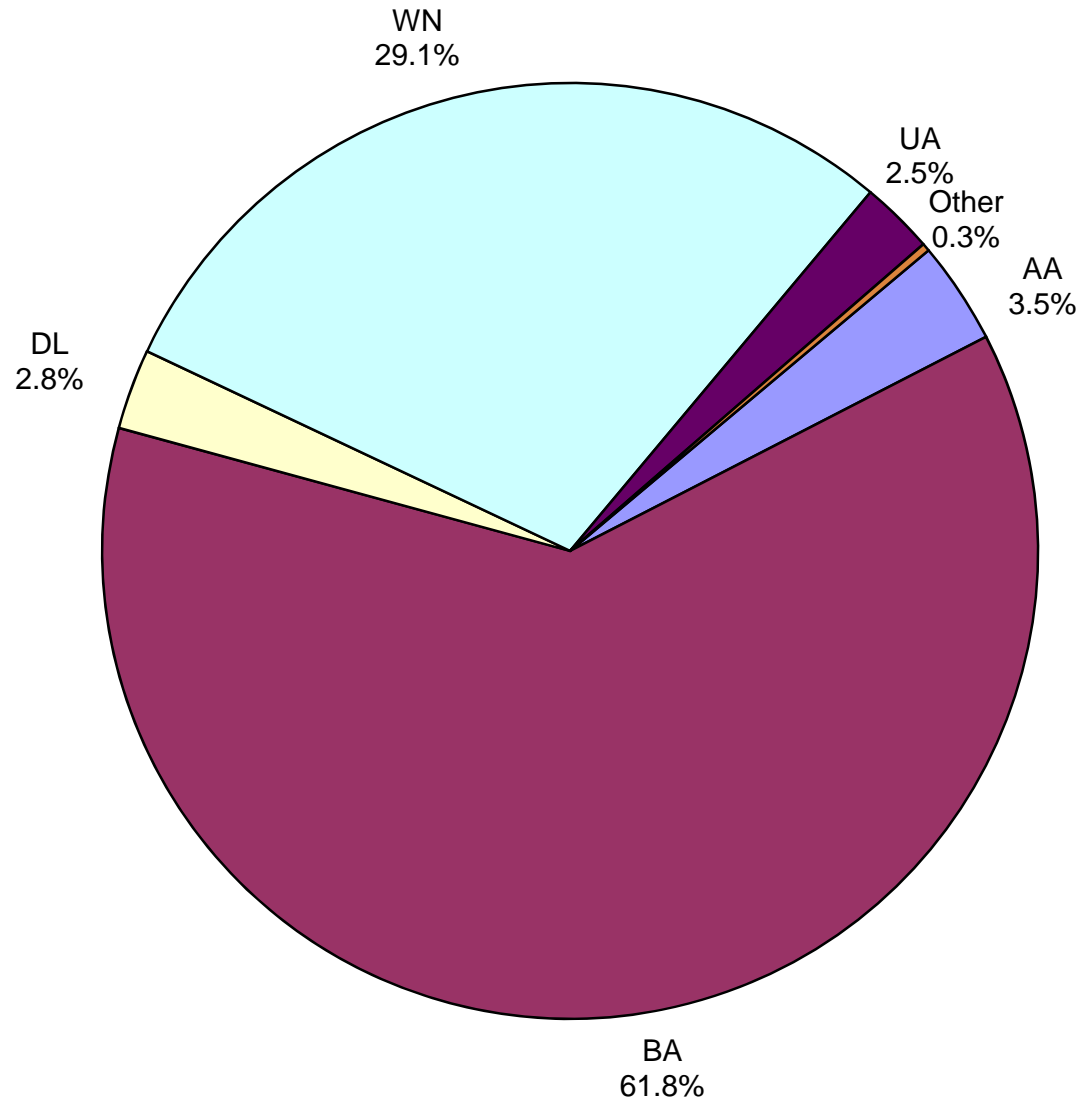
**All Passenger Carriers  
Enplaned Revenue Passengers  
February 2018**



**Other:** Aeromexico, Air Canada, Concesionaria Vuela dba Volaris, Sun Country and VIA Airlines

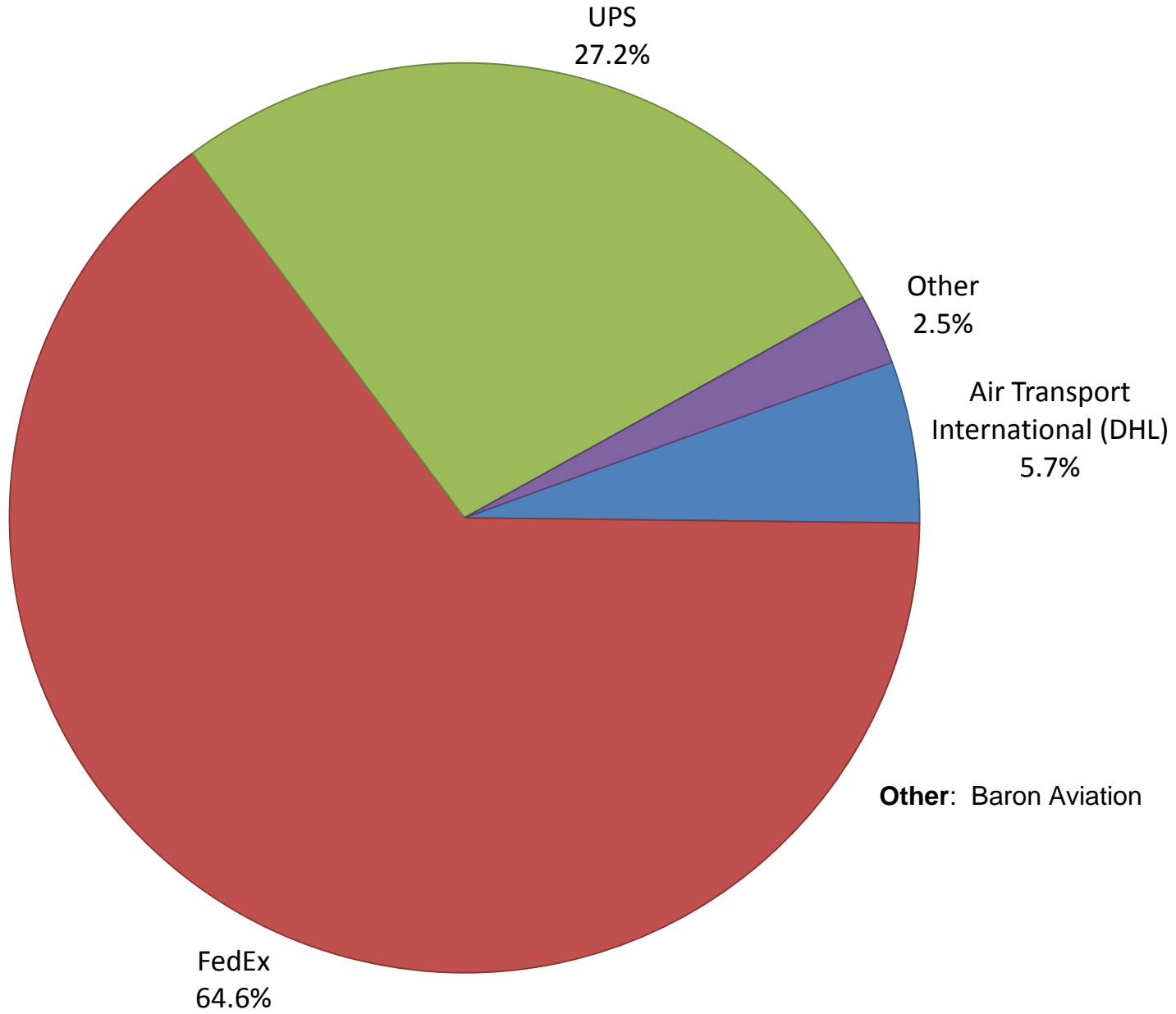
**Note:** American/US Airways, Delta and United Airlines percentages include Affiliates.

**AUS Belly Freight Market Shares  
February 2018**

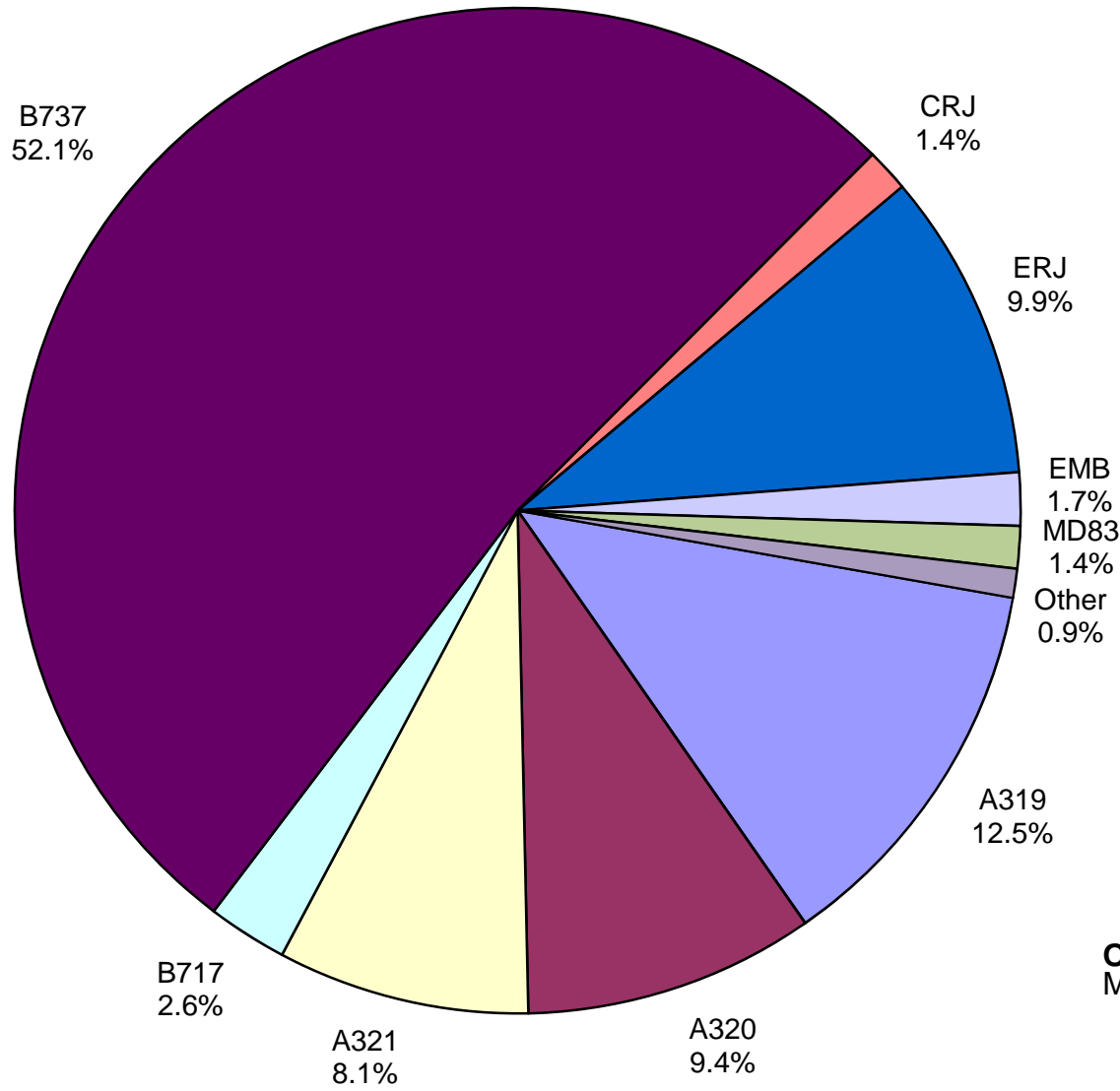


**Other = Alaska Airlines**

# Air Cargo Market Share February 2018

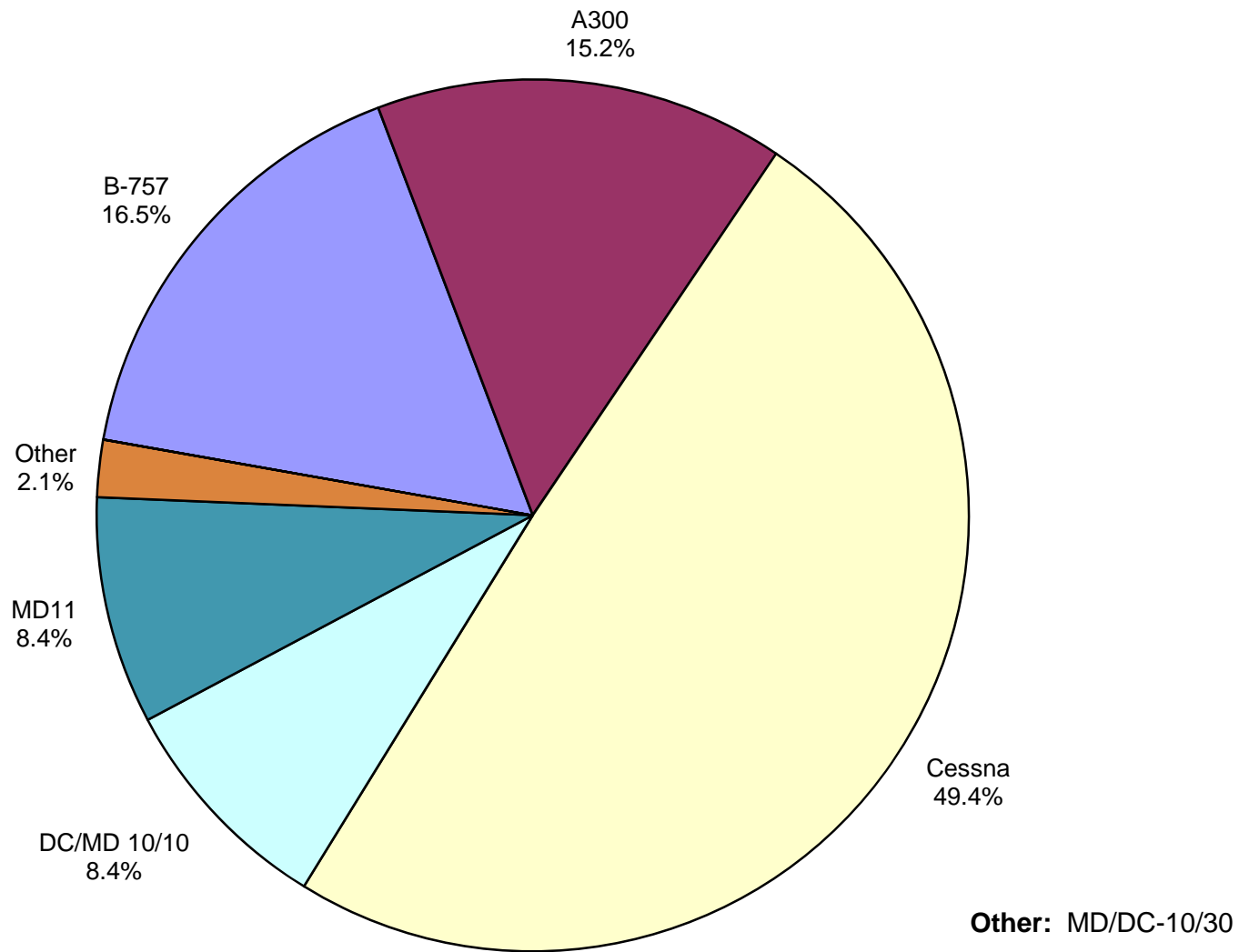


**AUS Scheduled Passenger Aircraft Fleet Mix  
February 2018**



**Other:** B-787-900, MD-82 and MD-88

# AUS Scheduled Cargo Aircraft Fleet Mix February 2018



# Austin-Bergstrom International Airport

## PAX Detail Report - February, 2018

Company	02/2018	02/2017	Period		YTD 2018	YTD 2017	YTD		2018 Share	2017 Share	Share Diff
			Difference	Change			Difference	Change			
Aerovias de Mexico S.A. de C.V.	2,828	2,531	297	11.7	6,228	5,463	765	14.0	0.3	0.3	0.0
Air Canada	3,175	3,005	170	5.7	6,391	6,399	-8	-0.1	0.3	0.4	0.0
Alaska Airlines	41,627	17,131	24,496	143.0	70,052	34,526	35,526	102.9	3.4	1.9	1.5
Allegiant Air	21,304	15,280	6,024	39.4	41,501	27,836	13,665	49.1	2.0	1.5	0.5
American Airlines	192,706	181,699	11,007	6.1	392,962	371,983	20,979	5.6	19.2	20.6	-1.4
British Airways	9,056	7,824	1,232	15.7	19,637	17,701	1,936	10.9	1.0	1.0	0.0
Concesionaria Vuela Compañía de Aviación, S.A.P.I. de C.V.	647	855	-208	-24.3	1,871	3,038	-1,167	-38.4	0.1	0.2	-0.1
Delta Air Lines	132,369	105,065	27,304	26.0	263,863	214,928	48,935	22.8	12.9	11.9	1.0
Frontier Airlines	41,575	22,039	19,536	88.6	83,816	45,561	38,255	84.0	4.1	2.5	1.6
JetBlue Airways	42,776	41,251	1,525	3.7	86,240	85,003	1,237	1.5	4.2	4.7	-0.5
Southwest Airlines	375,517	342,814	32,703	9.5	772,448	700,485	71,963	10.3	37.7	38.8	-1.1
Sun Country Airlines	229	555	-326	-58.7	898	1,110	-212	-19.1	0.0	0.1	0.0
Swift Air	0	136	-136	-100.0	266	136	130	95.6	0.0	0.0	0.0
Texas Sky	0	133	-133	-100.0	0	259	-259	-100.0	0.0	0.0	0.0
United Airlines	143,265	132,476	10,789	8.1	291,577	267,474	24,103	9.0	14.2	14.8	-0.6
VIA Airlines	978	0	978	0.0	2,019	0	2,019	0.0	0.1	0.0	0.1
Virgin America	0	12,395	-12,395	-100.0	11,117	24,233	-13,116	-54.1	0.5	1.3	-0.8
Xtra Airways/Casino Express	0	136	-136	-100.0	0	136	-136	-100.0	0.0	0.0	0.0
<b>Report Totals</b>	1,008,052	885,325	122,727	13.9%	2,050,886	1,806,271	244,615	13.5%			

### Statistics Included in Report:

Domestic Passengers:	Enplaned Revenue, Deplaned Revenue, Enplaned Non-Revenue, Deplaned Non-Revenue
International Passengers:	Enplaned Revenue, Deplaned Revenue, Enplaned Non-Revenue, Deplaned Non-Revenue
International Pre-Cleared Passengers:	Enplaned Revenue, Deplaned Revenue, Enplaned Non-Revenue, Deplaned Non-Revenue
South Terminal Domestic Passengers:	Enplaned Revenue, Deplaned Revenue, Enplaned Non-Revenue, Deplaned Non-Revenue



# Austin-Bergstrom International Airport

## Summary Landing Report

### Landing Type: Total

Month	2018		2017		2016		% Change 2018 - 2017		% Change 2017 - 2016	
	Count	Weight	Count	Weight	Count	Weight	Count	Weight	Count	Weight
January	5,086	688,923,110	4,768	612,688,871	4,622	560,718,408	6.67%	12.44%	3.16%	9.27%
February	4,706	637,500,756	4,357	552,711,639	4,387	527,452,920	8.01%	15.34%	-0.68%	4.79%
March			5,307	685,661,659	5,151	639,655,137			3.03%	7.19%
April			5,179	689,402,051	4,892	614,643,711			5.87%	12.16%
May			5,529	736,484,083	5,096	630,853,941			8.50%	16.74%
June			5,603	752,628,599	5,179	651,537,449			8.19%	15.52%
July			5,698	763,088,836	5,233	663,015,597			8.89%	15.09%
August			5,490	741,110,019	5,181	660,099,361			5.96%	12.27%
September			5,046	679,381,339	4,738	623,397,035			6.50%	8.98%
October			5,448	743,973,610	4,923	649,182,343			10.66%	14.60%
November			5,289	718,179,948	4,775	624,303,554			10.76%	15.04%
December			5,442	737,424,963	4,893	629,611,090			11.22%	17.12%
<b>Totals for Selected Period</b>	9,792	1,326,423,866	9,125	1,165,400,510	9,009	1,088,171,328	7.31%	13.82%	1.29%	7.10%
<b>Yearly Totals</b>	9,792	1,326,423,866	63,156	8,412,735,617	59,070	7,474,470,546			6.92%	12.55%