

**Austin-Bergstrom International Airport
Aviation Activity Report
Calendar Year 2020 vs 2019**

Combined Terminals

	2/2020	2/2019	Percent Change	1/2020 - 2/2020	1/2019 - 2/2019	Percent Change
ABIA						
Total Passenger Activity						
Domestic Enplaned Revenue	569,623	508,356	12.05%	1,145,430	1,011,818	13.21%
Domestic Deplaned Revenue	575,003	509,175	12.93%	1,170,324	1,029,076	13.73%
International Enplaned Revenue	10,513	7,548	39.28%	22,904	16,766	36.61%
International Deplaned Revenue	10,679	7,974	33.92%	24,637	19,007	29.62%
Domestic Enplaned Non-Revenue	13,662	13,307	2.67%	27,788	26,824	3.59%
Domestic Deplaned Non-Revenue	12,975	12,670	2.41%	25,893	25,747	0.57%
International Enplaned Non-Revenue	159	128	24.22%	283	205	38.05%
International Deplaned Non-Revenue	146	100	46.00%	250	177	41.24%
Intl Enplaned Pre-Cleared Revenue	2,239	2,052	9.11%	4,265	4,057	5.13%
Intl Deplaned Pre-Cleared Revenue	2,003	2,386	-16.05%	3,889	4,601	-15.47%
Intl Enplaned Pre-Cleared Non-Revenue	43	37	16.22%	82	63	30.16%
Intl Deplaned Pre-Cleared Non-Revenue	41	40	2.50%	86	69	24.64%
South Terminal Domestic Enplaned Revenue	24,759	25,429	-2.63%	48,563	52,262	-7.08%
South Terminal Domestic Deplaned Revenue	25,383	26,045	-2.54%	51,127	53,836	-5.03%
South Terminal Domestic Enplaned Non-Revenue	122	89	37.08%	208	195	6.67%
South Terminal Domestic Deplaned Non-Revenue	119	115	3.48%	213	230	-7.39%
ABIA Passenger Totals	1,247,469	1,115,451	11.84	2,525,942	2,244,933	12.52
<i>ABIA Enplaned Passenger Totals</i>	<i>621,120</i>	<i>556,946</i>	<i>11.52</i>	<i>1,249,523</i>	<i>1,112,190</i>	<i>12.35</i>
<i>ABIA Deplaned Passenger Totals</i>	<i>626,349</i>	<i>558,505</i>	<i>12.15</i>	<i>1,276,419</i>	<i>1,132,743</i>	<i>12.68</i>
<i>ABIA Domestic Passenger Totals</i>	<i>1,221,646</i>	<i>1,095,186</i>	<i>11.55</i>	<i>2,469,546</i>	<i>2,199,988</i>	<i>12.25</i>
<i>ABIA International Passenger Totals</i>	<i>25,823</i>	<i>20,265</i>	<i>27.43</i>	<i>56,396</i>	<i>44,945</i>	<i>25.48</i>

CURRENT PASSENGER RECORD = 1,643,016 RECORD SET = JULY 2019

Total Aircraft Operations

Air Carrier	10,593	9,888	7.13%	21,913	20,357	7.64%
Commuter & Air Taxi	1,204	1,223	-1.55%	2,518	2,511	0.28%
Military	429	679	-36.82%	864	1,556	-44.74%
General Aviation						
Itinerant	3,284	3137	4.69%	6,538	6,812	-4.02%
Local	28	56	-50.00%	84	122	-31.15%
Total G.A.	3,312	3,193	3.73	6,622	6,934	-4.50
Total Operations	15,538	14,983	3.70	31,917	31,358	1.78

**Austin-Bergstrom International Airport
Aviation Activity Report
Calendar Year 2020 vs 2019**

By Terminal

	2/2020	2/2019	Percent Change	1/2020 - 2/2020	1/2019 - 2/2019	Percent Change
<u>Barbara Jordan Terminal (BJT)</u>						
Passenger Activity						
Domestic Enplaned Revenue	569,623	508,356	12.05%	1,145,430	1,011,818	13.21%
Domestic Deplaned Revenue	575,003	509,175	12.93%	1,170,324	1,029,076	13.73%
International Enplaned Revenue	10,513	7,548	39.28%	22,904	16,766	36.61%
International Deplaned Revenue	10,679	7,974	33.92%	24,637	19,007	29.62%
Domestic Enplaned Non-Revenue	13,662	13,307	2.67%	27,788	26,824	3.59%
Domestic Deplaned Non-Revenue	12,975	12,670	2.41%	25,893	25,747	0.57%
International Enplaned Non-Revenue	159	128	24.22%	283	205	38.05%
International Deplaned Non-Revenue	146	100	46.00%	250	177	41.24%
Intl Enplaned Pre-Cleared Revenue	2,239	2,052	9.11%	4,265	4,057	5.13%
Intl Deplaned Pre-Cleared Revenue	2,003	2,386	-16.05%	3,889	4,601	-15.47%
Intl Enplaned Pre-Cleared Non-Revenue	43	37	16.22%	82	63	30.16%
Intl Deplaned Pre-Cleared Non-Revenue	41	40	2.50%	86	69	24.64%
Barbara Jordan Terminal Passenger Totals	1,197,086	1,063,773	12.53	2,425,831	2,138,410	13.44
<i>BJT Enplaned Passenger Totals</i>	<i>596,239</i>	<i>531,428</i>	<i>12.20</i>	<i>1,200,752</i>	<i>1,059,733</i>	<i>13.31</i>
<i>BJT Deplaned Passenger Totals</i>	<i>600,847</i>	<i>532,345</i>	<i>12.87</i>	<i>1,225,079</i>	<i>1,078,677</i>	<i>13.57</i>
<i>BJT Domestic Passenger Totals</i>	<i>1,171,263</i>	<i>1,043,508</i>	<i>12.24</i>	<i>2,369,435</i>	<i>2,093,465</i>	<i>13.18</i>
<i>BJT International Passenger Totals</i>	<i>25,823</i>	<i>20,265</i>	<i>27.43</i>	<i>56,396</i>	<i>44,945</i>	<i>25.48</i>
<u>South Terminal (ST)</u>						
Passenger Activity						
South Terminal Domestic Enplaned Revenue	24,759	25,429	-2.63%	48,563	52,262	-7.08%
South Terminal Domestic Deplaned Revenue	25,383	26,045	-2.54%	51,127	53,836	-5.03%
South Terminal Domestic Enplaned Non-Revenue	122	89	37.08%	208	195	6.67%
South Terminal Domestic Deplaned Non-Revenue	119	115	3.48%	213	230	-7.39%
South Terminal Passenger Totals	50,383	51,678	-2.51	100,111	106,523	-6.02
<i>ST Enplaned Passenger Totals</i>	<i>24,881</i>	<i>25,518</i>	<i>-2.50</i>	<i>48,771</i>	<i>52,457</i>	<i>-7.03</i>
<i>ST Deplaned Passenger Totals</i>	<i>25,502</i>	<i>26,160</i>	<i>-2.52</i>	<i>51,340</i>	<i>54,066</i>	<i>-5.04</i>

**Austin-Bergstrom International Airport
Aviation Activity Report
Calendar Year 2020 vs 2019**

	2/2020	2/2019	Percent Change	1/2020 - 2/2020	1/2019 - 2/2019	Percent Change
<u>Total Cargo Activity</u>						
Mail						
Domestic Enplaned Mail	253,146	223,172	13.43%	534,784	416,635	28.36%
Domestic Deplaned Mail	688,612	661,281	4.13%	1,498,357	1,314,152	14.02%
International Enplaned Mail	0	0	0.00%	0	0	0.00%
International Deplaned Mail	0	0	0.00%	0	110,830	-100.00%
South Terminal-Domestic Enplaned Mail	0	0	0.00%	0	0	0.00%
South Terminal-Domestic Deplaned Mail	0	0	0.00%	0	0	0.00%
Mail Totals	941,758	884,453	6.48	2,033,141	1,841,617	10.40
Cargo						
Domestic Enplaned Cargo	4,637,665	4,399,157	5.42%	9,604,482	9,221,677	4.15%
Domestic Deplaned Cargo	6,396,393	6,192,261	3.30%	13,565,034	13,230,039	2.53%
International Enplaned Cargo	250,440	235,581	6.31%	495,612	442,247	12.07%
International Deplaned Cargo	143,490	157,113	-8.67%	272,733	260,893	4.54%
South Terminal-Domestic Enplaned Cargo	0	0	0.00%	0	0	0.00%
South Terminal-Domestic Deplaned Cargo	0	0	0.00%	0	0	0.00%
Cargo Totals	11,427,988	10,984,112	4.04	23,937,861	23,154,856	3.38
Belly Freight						
Domestic Enplaned Belly Freight	233,724	299,726	-22.02%	482,364	593,965	-18.79%
Domestic Deplaned Belly Freight	475,967	477,875	-0.40%	950,833	958,004	-0.75%
International Enplaned Belly Freight	504,491	494,360	2.05%	797,840	718,465	11.05%
International Deplaned Belly Freight	859,512	865,465	-0.69%	1,472,520	1,463,938	0.59%
South Terminal-Domestic Enplaned Belly Frght	0	0	0.00%	0	0	0.00%
South Terminal-Domestic Deplaned Belly Frght	0	0	0.00%	0	0	0.00%
Belly Freight Totals	2,073,694	2,137,426	-2.98	3,703,557	3,734,372	-0.83
Cargo Totals (Mail, Cargo, Belly Freight)	14,443,440	14,005,991	3.12	29,674,559	28,730,845	3.28
<i>Enplaned Cargo Totals</i>	<i>5,879,466</i>	<i>5,651,996</i>	<i>4.02</i>	<i>11,915,082</i>	<i>11,392,989</i>	<i>4.58</i>
<i>Deplaned Cargo Totals</i>	<i>8,563,974</i>	<i>8,353,995</i>	<i>2.51</i>	<i>17,759,477</i>	<i>17,337,856</i>	<i>2.43</i>
<i>Domestic Cargo Totals</i>	<i>12,685,507</i>	<i>12,253,472</i>	<i>3.53</i>	<i>26,635,854</i>	<i>25,734,472</i>	<i>3.50</i>
<i>International Cargo Totals</i>	<i>1,757,933</i>	<i>1,752,519</i>	<i>0.31</i>	<i>3,038,705</i>	<i>2,996,373</i>	<i>1.41</i>

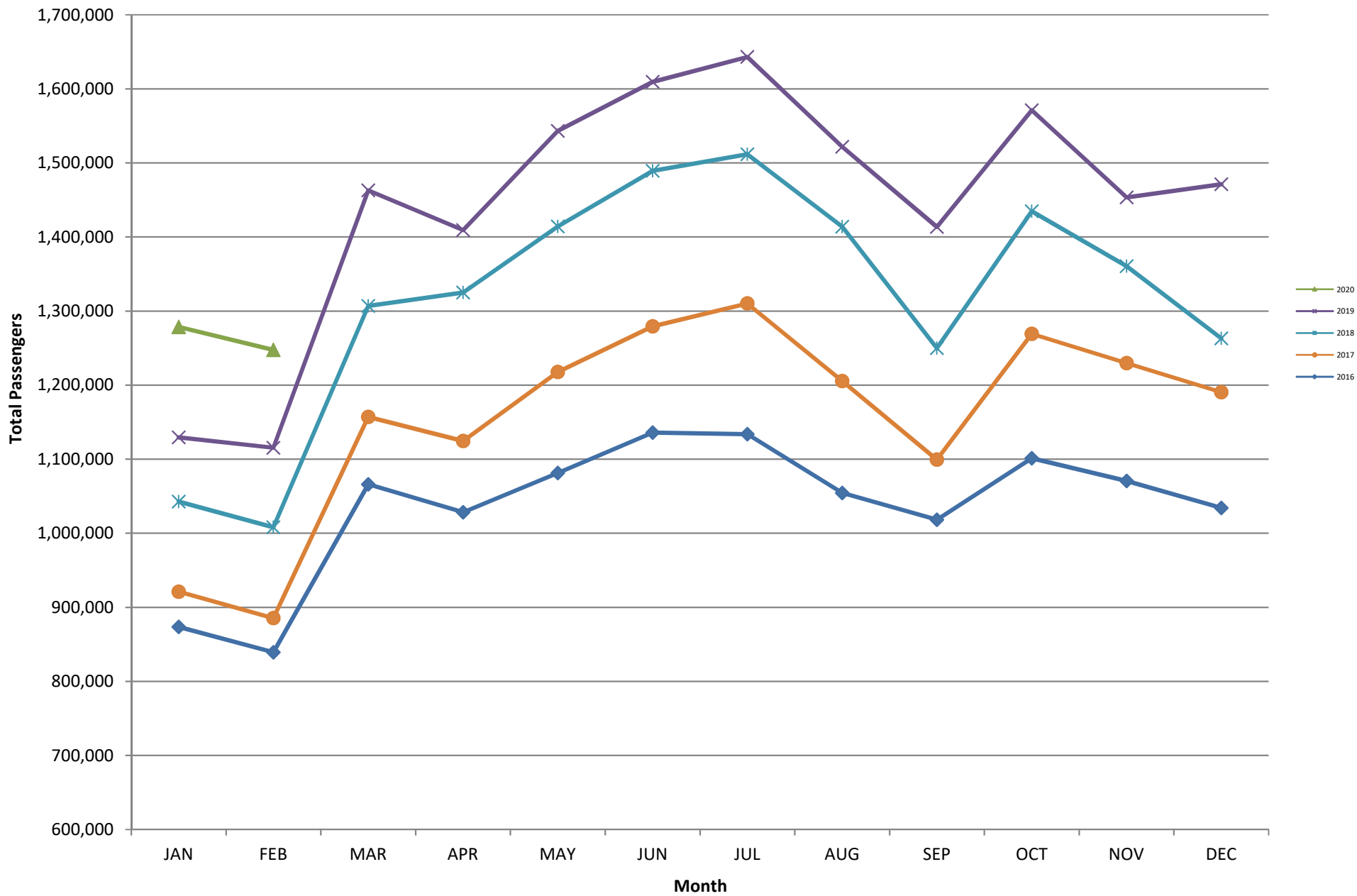
CURRENT CARGO RECORD = 40,215,518

RECORD SET = MARCH 2001

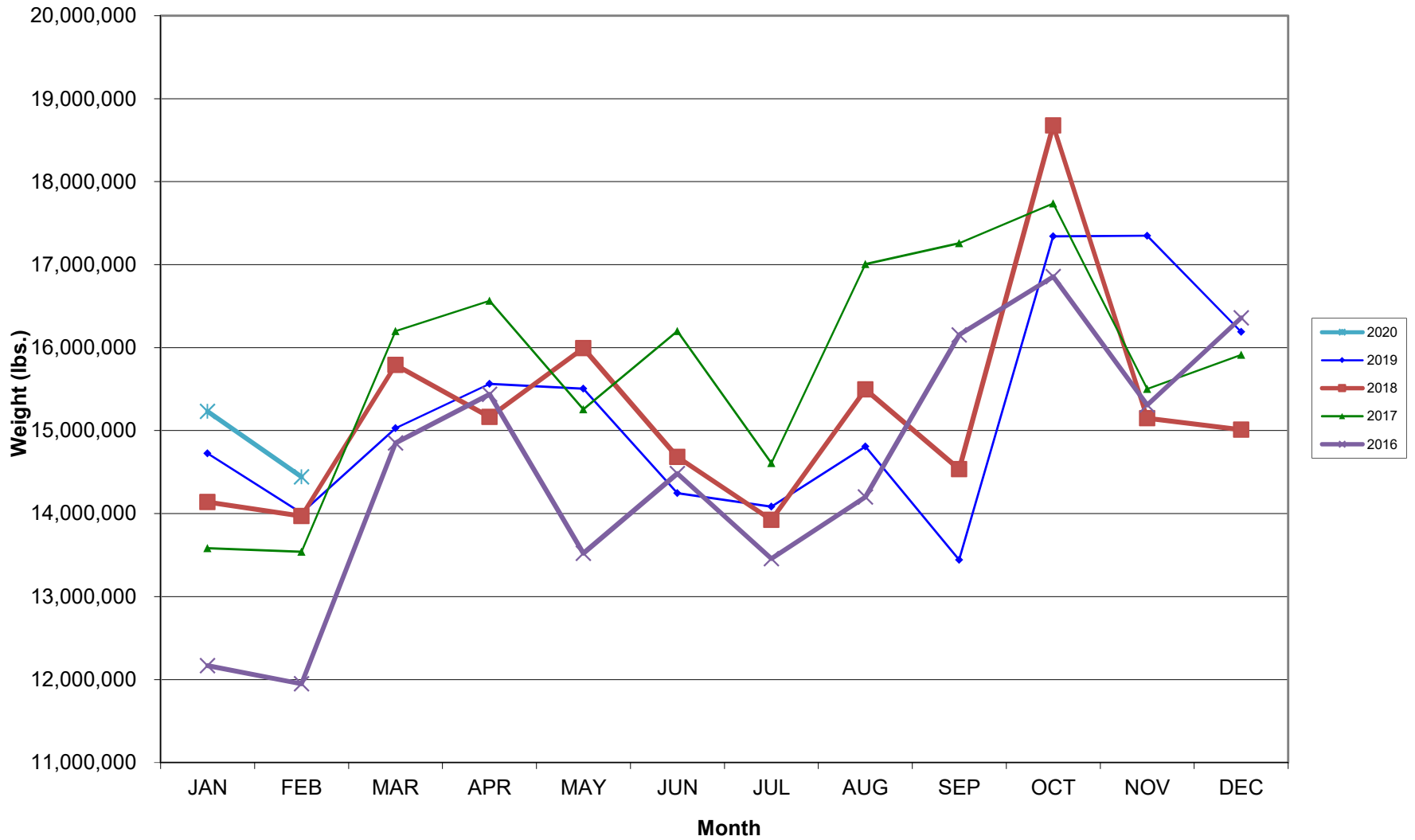
AUS – Airline Codes
February 2020

<u>Code</u>	<u>Carrier</u>
AM	Aerovias de Mexico S.A. de C.V. dba AeroMexico Airlines
AC	Air Canada
AS	Alaska Airlines, Inc.
G4	Allegiant Air, LLC
AA	American Airlines, Inc.
BA	British Airways Plc
DL	Delta Airlines
LH	Deutsche Lufthansa AG
F9	Frontier Airlines
B6	JetBlue Airways Corp.
DI	Norwegian Air UK, Ltd.
WN	Southwest Airlines
NK	Spirit Airlines
SY	Sun Country Airlines (Charters)
SWQ	Swift Air, LLC
UA	United Airlines, Inc.

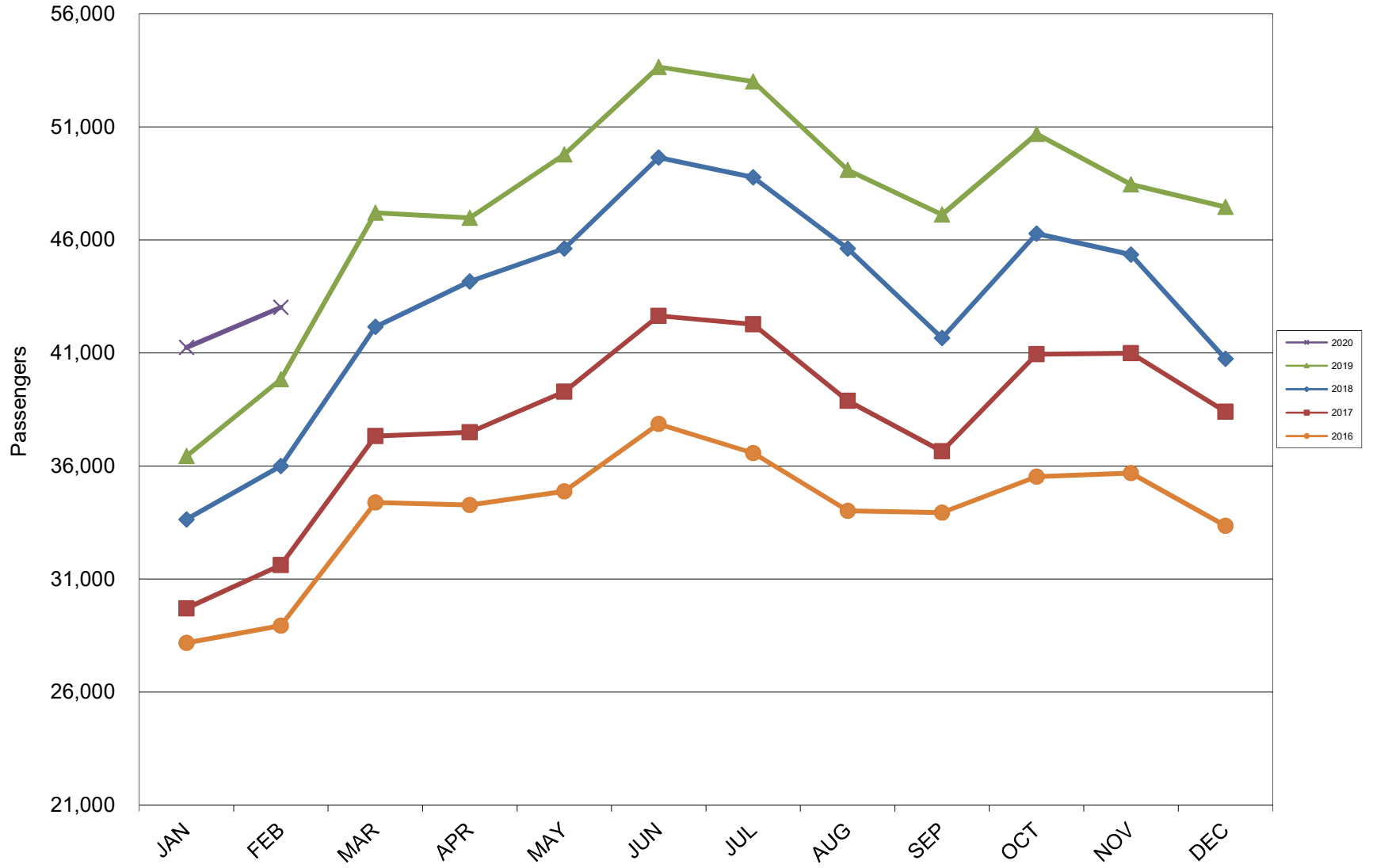
AUSTIN PASSENGER TRAFFIC 5 Year Trend



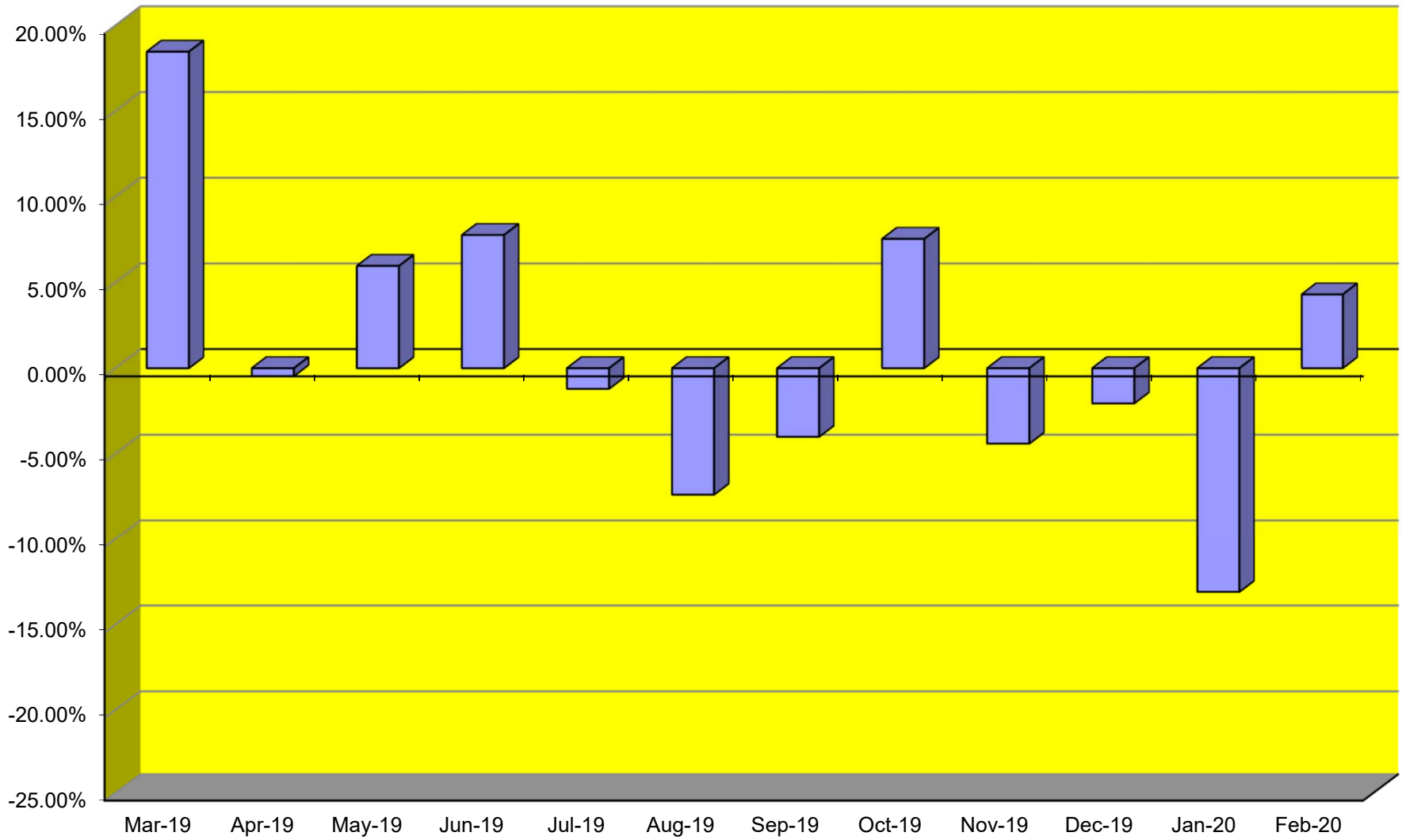
TOTAL CARGO POUNDAGE - AUSTIN, TEXAS



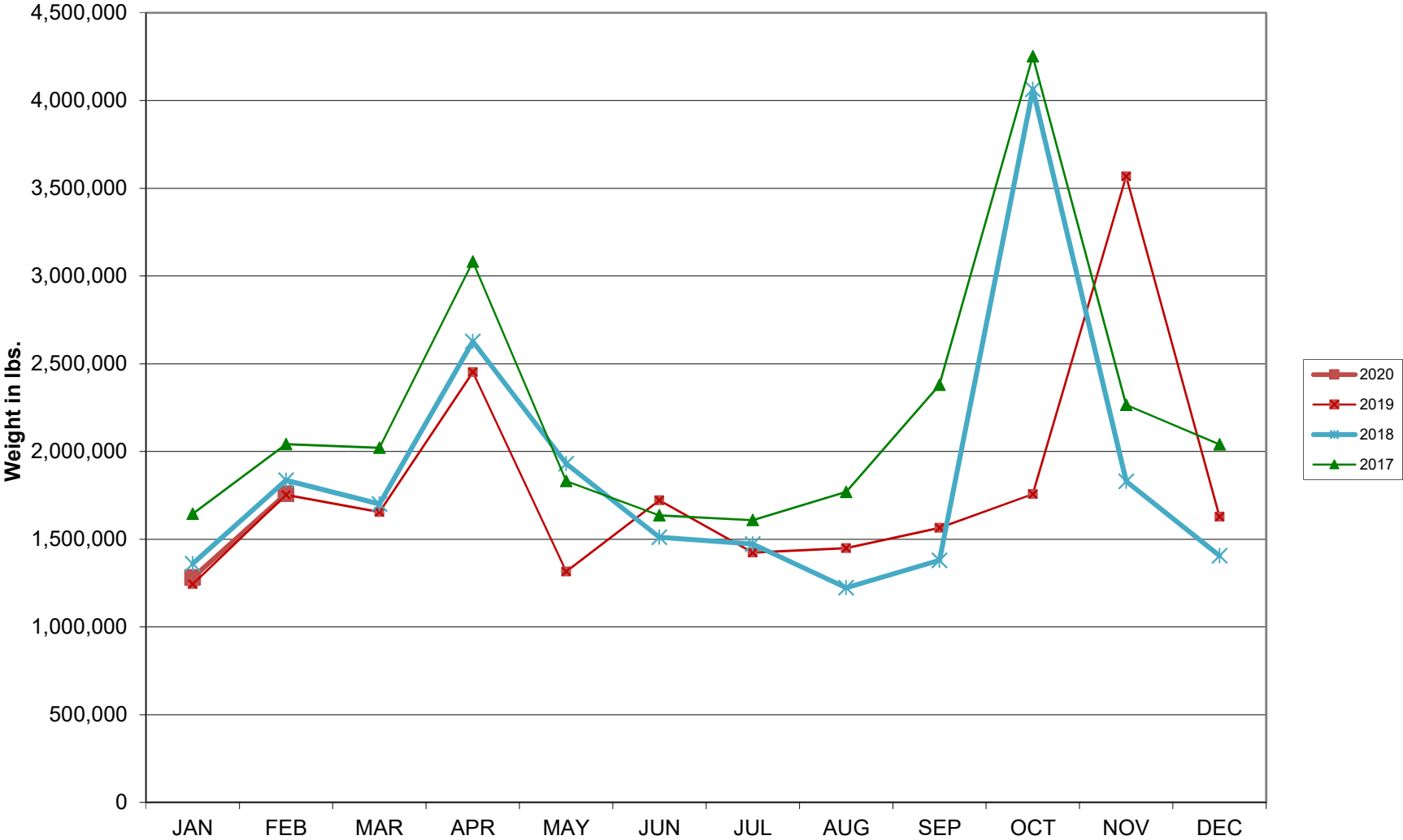
Average Daily Passengers



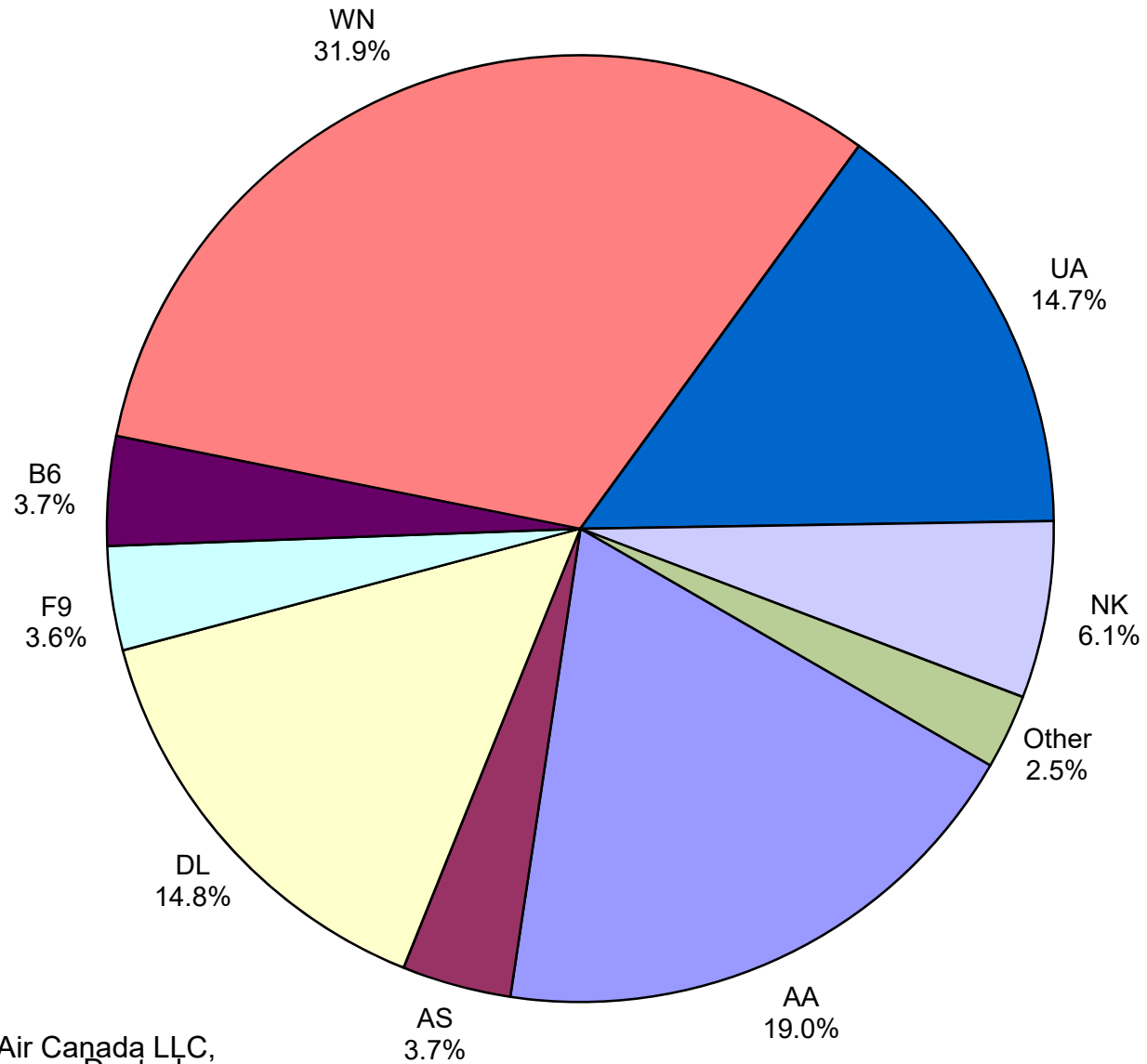
Monthly % Change in Average Daily Passengers



HISTORY OF INTERNATIONAL AIR CARGO



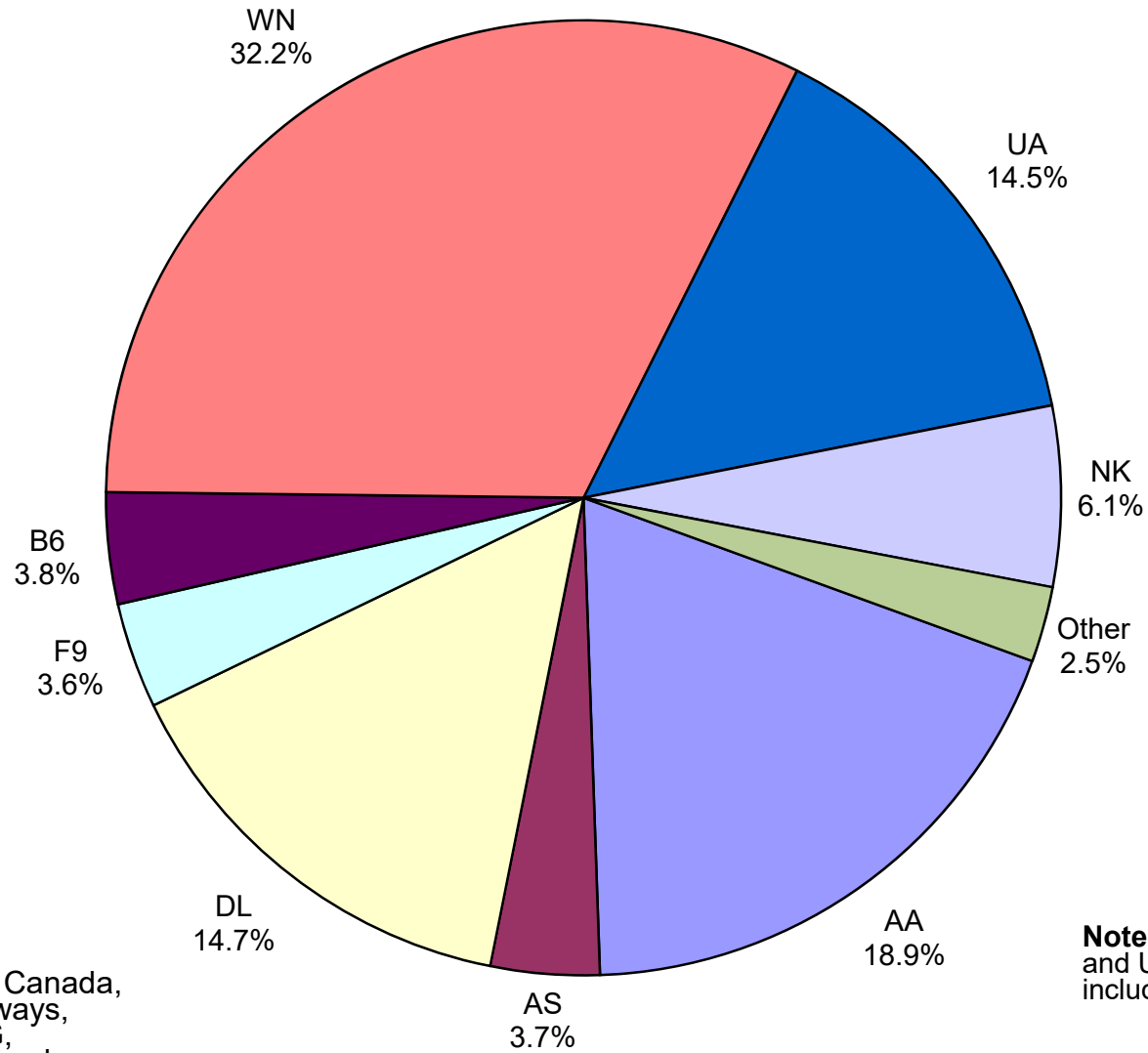
Total Passengers February 2020



Other: Aeromexico, Air Canada LLC, Allegiant Air, British Airways, Deutsche Lufthansa AG, Norwegian Air, UK, Ltd., Sun Country and Swift Air, LLC

Note: American, Delta and United Airlines percentages include Affiliates.

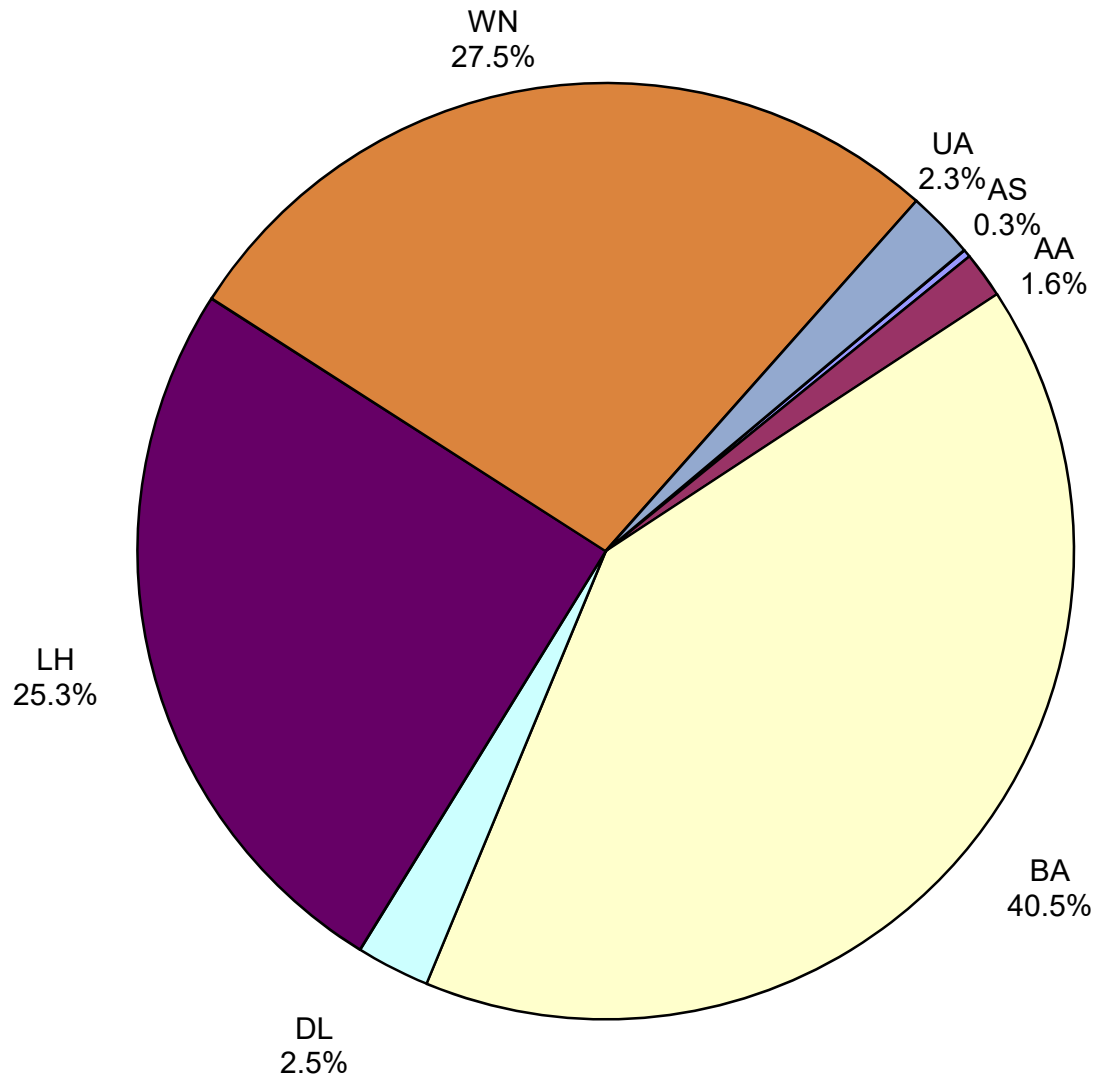
**All Passenger Carriers
Enplaned Revenue Passengers
February 2020**



Other: Aeromexico, Air Canada, Allegiant Air, British Airways, Deutsche Lufthansa AG, Norwegian Air UK, Ltd. and Swift Air, LLC

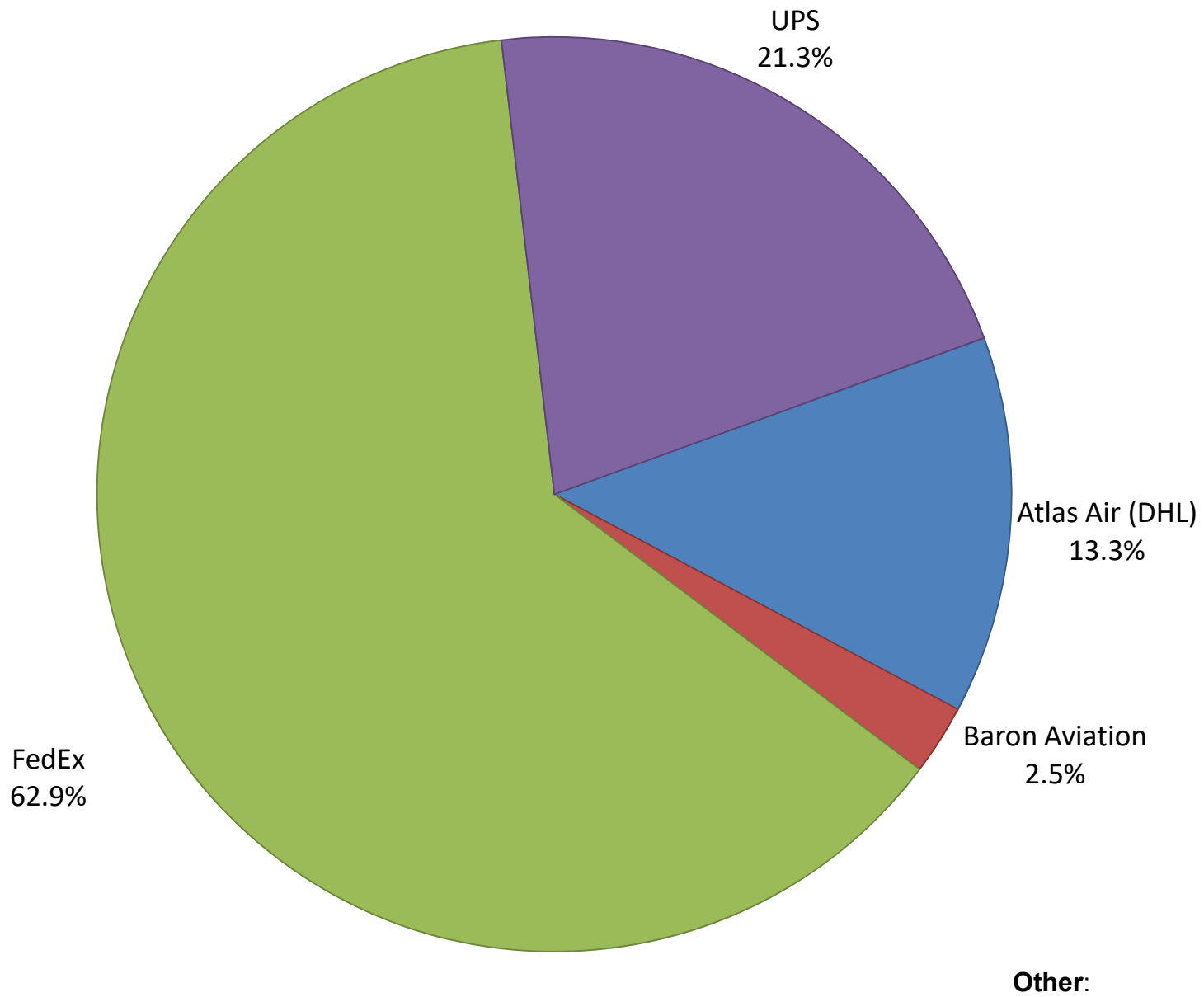
Note: American/US Airways, Delta and United Airlines percentages include Affiliates.

**AUS Belly Freight Market Shares
February 2020**

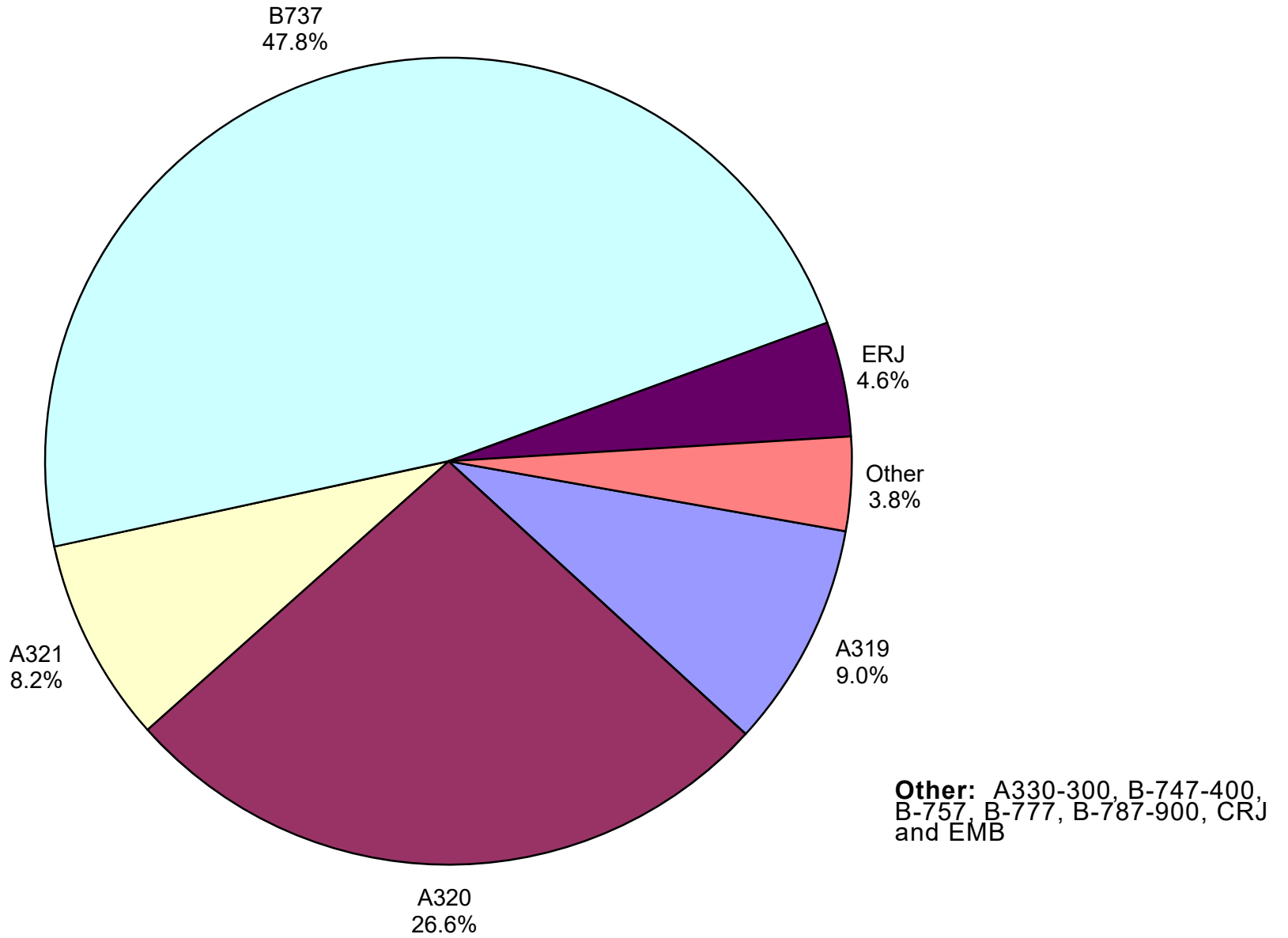


Other =

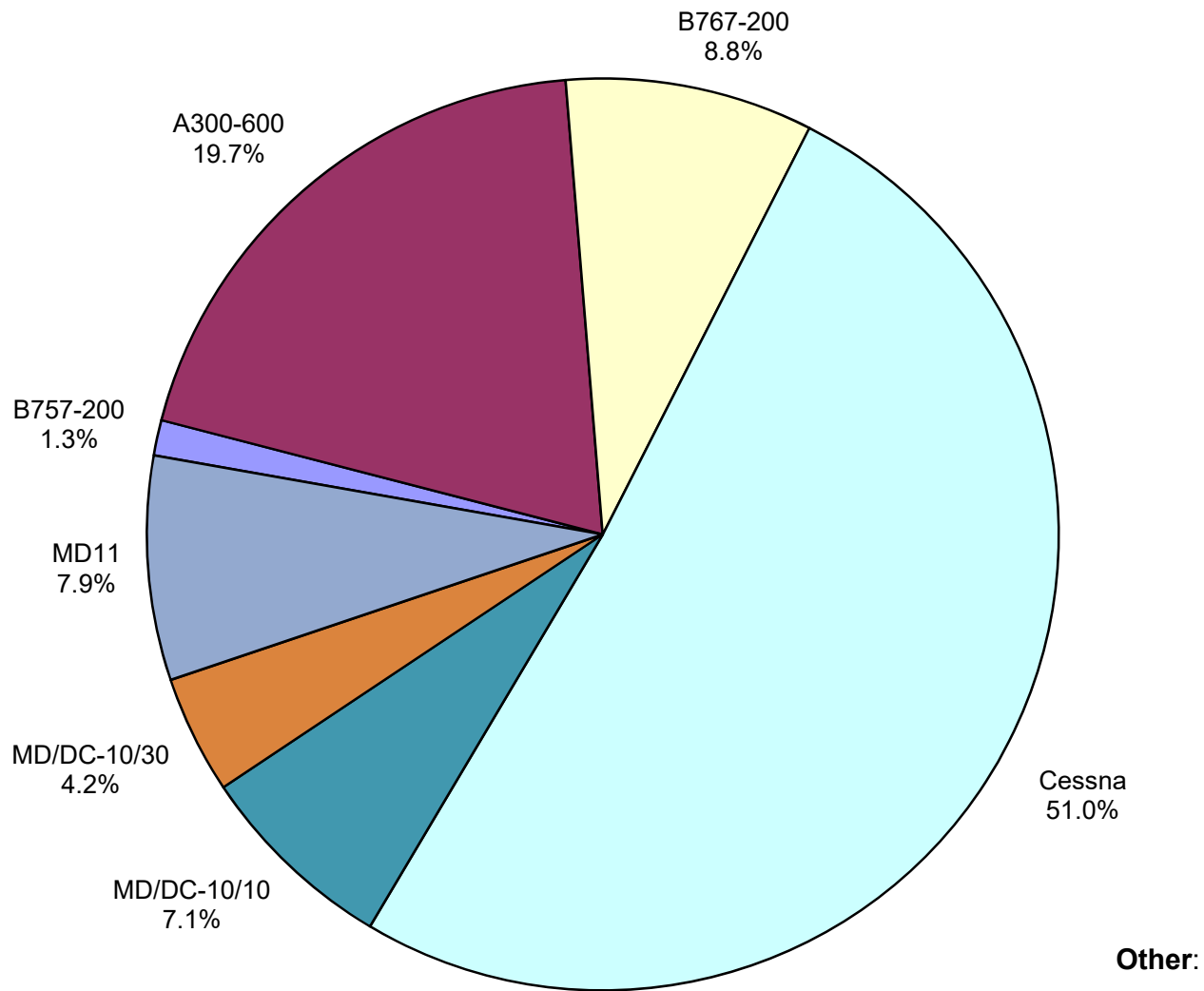
Air Cargo Market Share February 2020



**AUS Scheduled Passenger Aircraft Fleet Mix
February 2020**



**AUS Scheduled Cargo Aircraft Fleet Mix
February 2020**



Austin-Bergstrom International Airport

Pax Detail Report - February, 2020

Company	Period				YTD				2020 Share	2019 Share	Share Diff
	2/2020	2/2019	Difference	Change	YTD 2020	YTD 2019	Difference	Change			
Aerovias de Mexico S.A. de C.V.	3,451	2,260	1,191	52.7	7,596	5,503	2,093	38.0	0.3	0.2	0.1
Air Canada	4,326	4,515	-189	-4.2	8,322	8,790	-468	-5.3	0.3	0.4	-0.1
Alaska Airlines INC	46,426	40,287	6,139	15.2	93,124	83,550	9,574	11.5	3.7	3.7	0.0
Allegiant Air LLC	6,110	11,388	-5,278	-46.3	11,631	19,858	-8,227	-41.4	0.5	0.9	-0.4
American Airlines INC	237,471	227,608	9,863	4.3	482,399	461,407	20,992	4.5	19.1	20.6	-1.5
British Airways PLC	10,382	9,989	393	3.9	24,072	22,824	1,248	5.5	1.0	1.0	0.0
Concesionaria Vuela Compañía de Aviación, S.A.P.I. de C.V.	0	0	0	0.0	0	434	-434	-100.0	0.0	0.0	0.0
Delta Air Lines	184,262	143,285	40,977	28.6	370,319	290,015	80,304	27.7	14.7	12.9	1.8
Deutsche Lufthansa AG	6,073	0	6,073	0.0	13,637	0	13,637	0.0	0.5	0.0	0.5
Frontier Airlines INC	44,273	40,060	4,213	10.5	88,480	85,921	2,559	3.0	3.5	3.8	-0.3
JetBlue Airways Corporation	46,523	39,711	6,812	17.2	93,758	81,607	12,151	14.9	3.7	3.6	0.1
Miami Air International INC	0	124	-124	-100.0	0	124	-124	-100.0	0.0	0.0	0.0
Norwegian Air UK LTD	1,147	0	1,147	0.0	1,147	0	1,147	0.0	0.0	0.0	0.0
Southwest Airlines	397,595	406,453	-8,858	-2.2	812,090	823,174	-11,084	-1.3	32.1	36.7	-4.6
Spirit Airlines Inc	75,392	27,396	47,996	175.2	149,908	27,396	122,512	447.2	5.9	1.2	4.7
Sun Country Airlines/MN Airlines LLC	44	600	-556	-92.7	271	1,190	-919	-77.2	0.0	0.1	-0.1
Swift Air LLC	183	59	124	210.2	928	462	466	100.9	0.0	0.0	0.0
United Airlines INC	183,811	161,486	22,325	13.8	368,260	331,934	36,326	10.9	14.6	14.8	-0.2
VIA Airlines, INC	0	230	-230	-100.0	0	744	-744	-100.0	0.0	0.0	0.0
Report Totals	1,247,469	1,115,451	132,018	11.8%	2,525,942	2,244,933	281,009	12.5%	99.9%	99.9%	

Statistics Included in Report:

Domestic Passengers: Enplaned Revenue, Deplaned Revenue, Enplaned Non-Revenue, Deplaned Non-Revenue
 International Passengers: Enplaned Revenue, Deplaned Revenue, Enplaned Non-Revenue, Deplaned Non-Revenue
 International Pre-Cleared Passengers: Enplaned Revenue, Deplaned Revenue, Enplaned Non-Revenue, Deplaned Non-Revenue
 South Terminal Domestic Passengers: Enplaned Revenue, Deplaned Revenue, Enplaned Non-Revenue, Deplaned Non-Revenue

Austin-Bergstrom International Airport

Summary Landings Report

Landing Type: Total

Month	2020		2019		2018		% Change 2020- 2019		% Change 2019- 2018	
	Count	Weight	Count	Weight	Count	Weight	Count	Weight	Count	Weight
January	5,762	812,175,948	5,348	733,746,679	5,086	688,923,110	7.98%	10.62%	4.78%	4.93%
February	5,382	764,833,023	5,040	692,708,930	4,706	637,500,756	8.41%	10.66%	7.66%	9.36%
March	0	0	5,964	825,483,911	5,643	760,648,260	-100.00%	-100.00%	5.38%	6.89%
April	0	0	5,899	815,621,798	5,797	793,367,736	-100.00%	-100.00%	-0.34%	0.56%
May	0	0	6,294	881,747,150	6,117	831,431,763	-100.00%	-100.00%	-1.13%	0.20%
June	0	0	6,322	890,410,020	6,211	852,438,818	-100.00%	-100.00%	-2.30%	-1.73%
July	0	0	6,551	915,103,306	6,346	869,502,671	-100.00%	-100.00%	-0.12%	0.54%
August	0	0	6,447	906,499,773	6,245	861,046,997	-100.00%	-100.00%	-0.96%	-0.55%
September	0	0	6,020	848,899,951	5,737	790,731,351	-100.00%	-100.00%	1.37%	2.73%
October	0	0	6,459	916,700,076	6,078	846,310,860	-100.00%	-100.00%	1.67%	2.68%
November	0	0	5,924	836,527,780	5,684	780,994,101	-100.00%	-100.00%	3.81%	4.20%
December	0	0	6,078	848,973,148	5,600	761,317,385	-100.00%	-100.00%	11.36%	13.06%
Totals For Selected Period	11,144	1,577,008,971	10,388	1,426,455,609	9,792	1,326,423,866	7.28%	10.55%	6.09%	7.54%
Yearly Totals	11,144	1,577,008,971	72,346	10,112,422,522	69,250	9,474,213,808	-84.60%	-84.41%	4.47%	6.74%