

**Austin-Bergstrom International Airport
Aviation Activity Report
Calendar Year 2018 vs 2017**

Combined Terminals

	1/2018	1/2017	Percent Change	1/2018 - 1/2018	1/2017 - 1/2017	Percent Change
ABIA						
Total Passenger Activity						
Domestic Enplaned Revenue	476,037	430,615	10.55	476,037	430,615	10.55
Domestic Deplaned Revenue	494,185	442,731	11.62	494,185	442,731	11.62
International Enplaned Revenue	10,100	9,922	1.79	10,100	9,922	1.79
International Deplaned Revenue	11,818	11,068	6.78	11,818	11,068	6.78
Domestic Enplaned Non-Revenue	13,098	11,946	9.64	13,098	11,946	9.64
Domestic Deplaned Non-Revenue	12,326	11,156	10.49	12,326	11,156	10.49
International Enplaned Non-Revenue	97	60	61.67	97	60	61.67
International Deplaned Non-Revenue	50	54	-7.41	50	54	-7.41
Intl Enplaned Pre-Cleared Revenue	1,491	1,640	-9.09	1,491	1,640	-9.09
Intl Deplaned Pre-Cleared Revenue	1,680	1,711	-1.81	1,680	1,711	-1.81
Intl Enplaned Pre-Cleared Non-Revenue	26	25	4.00	26	25	4.00
Intl Deplaned Pre-Cleared Non-Revenue	19	18	5.56	19	18	5.56
South Terminal Domestic Enplaned Revenue	10,532	0	0.00	10,532	0	0.00
South Terminal Domestic Deplaned Revenue	11,362	0	0.00	11,362	0	0.00
South Terminal Domestic Enplaned Non-Revenue	6	0	0.00	6	0	0.00
South Terminal Domestic Deplaned Non-Revenue	7	0	0.00	7	0	0.00
ABIA Passenger Totals	1,042,834	920,946	13.24	1,042,834	920,946	13.24
<i>ABIA Enplaned Passenger Totals</i>	<i>511,387</i>	<i>454,208</i>	<i>12.59</i>	<i>511,387</i>	<i>454,208</i>	<i>12.59</i>
<i>ABIA Deplaned Passenger Totals</i>	<i>531,447</i>	<i>466,738</i>	<i>13.86</i>	<i>531,447</i>	<i>466,738</i>	<i>13.86</i>
<i>ABIA Domestic Passenger Totals</i>	<i>1,017,553</i>	<i>896,448</i>	<i>13.51</i>	<i>1,017,553</i>	<i>896,448</i>	<i>13.51</i>
<i>ABIA International Passenger Totals</i>	<i>25,281</i>	<i>24,498</i>	<i>3.20</i>	<i>25,281</i>	<i>24,498</i>	<i>3.20</i>

CURRENT PASSENGER RECORD = 1,310,174 RECORD SET = JULY 2017

Total Aircraft Operations

Air Carrier	9,847	9,322	5.63	9,847	9,322	5.63
Commuter & Air Taxi	1,290	1,095	17.81	1,290	1,095	17.81
Military	694	904	-23.23	694	904	-23.23
General Aviation						
Itinerant	3,657	4,206	-13.05	3,657	4,206	-13.05
Local	61	134	-54.48	61	134	-54.48
Total G.A.	3,718	4,340	-14.33	3,718	4,340	-14.33
Total Operations	15,549	15,661	-0.72	15,549	15,661	-0.72

**Austin-Bergstrom International Airport
Aviation Activity Report
Calendar Year 2018 vs 2017**

By Terminal

	1/2018	1/2017	Percent Change	1/2018 - 1/2018	1/2017 - 1/2017	Percent Change
<u>Barbara Jordan Terminal (BJT)</u>						
Passenger Activity						
Domestic Enplaned Revenue	476,037	430,615	14.03	476,037	430,615	10.55
Domestic Deplaned Revenue	494,185	442,731	11.79	494,185	442,731	11.62
International Enplaned Revenue	10,100	9,922	-0.48	10,100	9,922	1.79
International Deplaned Revenue	11,818	11,068	-0.38	11,818	11,068	6.78
Domestic Enplaned Non-Revenue	13,098	11,946	20.96	13,098	11,946	9.64
Domestic Deplaned Non-Revenue	12,326	11,156	16.23	12,326	11,156	10.49
International Enplaned Non-Revenue	97	60	50.00	97	60	61.67
International Deplaned Non-Revenue	50	54	50.00	50	54	-7.41
Intl Enplaned Pre-Cleared Revenue	1,491	1,640	11.05	1,491	1,640	-9.09
Intl Deplaned Pre-Cleared Revenue	1,680	1,711	-1.74	1,680	1,711	-1.81
Intl Enplaned Pre-Cleared Non-Revenue	26	25	-41.38	26	25	4.00
Intl Deplaned Pre-Cleared Non-Revenue	19	18	-21.62	19	18	5.56
Barbara Jordan Terminal Passenger Totals	1,020,927	920,946	10.86	1,020,927	920,946	10.86
<i>BJT Enplaned Passenger Totals</i>	<i>500,849</i>	<i>454,208</i>	<i>10.27</i>	<i>500,849</i>	<i>454,208</i>	<i>10.27</i>
<i>BJT Deplaned Passenger Totals</i>	<i>520,078</i>	<i>466,738</i>	<i>11.43</i>	<i>520,078</i>	<i>466,738</i>	<i>11.43</i>
<i>BJT Domestic Passenger Totals</i>	<i>995,646</i>	<i>896,448</i>	<i>11.07</i>	<i>995,646</i>	<i>896,448</i>	<i>11.07</i>
<i>BJT International Passenger Totals</i>	<i>25,281</i>	<i>24,498</i>	<i>3.20</i>	<i>25,281</i>	<i>24,498</i>	<i>3.20</i>
<u>South Terminal (ST)</u>						
Passenger Activity						
South Terminal Domestic Enplaned Revenue	10,532	0	0.00	10,532	0	0.00
South Terminal Domestic Deplaned Revenue	11,362	0	0.00	11,362	0	0.00
South Terminal Domestic Enplaned Non-Revenue	6	0	0.00	6	0	0.00
South Terminal Domestic Deplaned Non-Revenue	7	0	0.00	7	0	0.00
South Terminal Passenger Totals	21,907	0	0.00	21,907	0	0.00
<i>ST Enplaned Passenger Totals</i>	<i>10,538</i>	<i>0</i>	<i>0</i>	<i>10,538</i>	<i>0</i>	<i>0</i>
<i>ST Deplaned Passenger Totals</i>	<i>11,369</i>	<i>0</i>	<i>0</i>	<i>11,369</i>	<i>0</i>	<i>0</i>

**Austin-Bergstrom International Airport
Aviation Activity Report
Calendar Year 2018 vs 2017**

	1/2018	1/2017	Percent Change	1/2018 - 1/2018	1/2017 - 1/2017	Percent Change
<u>Total Cargo Activity</u>						
Mail						
Domestic Enplaned Mail	110,527	176,944	-37.54	110,527	176,944	-37.54
Domestic Deplaned Mail	412,719	275,618	49.74	412,719	275,618	49.74
International Enplaned Mail	0	0	0.00	0	0	0.00
International Deplaned Mail	0	0	0.00	0	0	0.00
South Terminal-Intl Enplaned Mail	0	0	0.00	0	0	0.00
South Terminal-Intl Deplaned Mail	0	0	0.00	0	0	0.00
Mail Totals	523,246	452,562	15.62	523,246	452,562	15.62
Cargo						
Domestic Enplaned Cargo	4,673,090	4,471,203	4.52	4,673,090	4,471,203	4.52
Domestic Deplaned Cargo	6,895,128	6,438,966	7.08	6,895,128	6,438,966	7.08
International Enplaned Cargo	499,022	623,417	-19.95	499,022	623,417	-19.95
International Deplaned Cargo	154,191	318,802	-51.63	154,191	318,802	-51.63
South Terminal-Intl Enplaned Cargo	0	0	0.00	0	0	0.00
South Terminal-Intl Deplaned Cargo	0	0	0.00	0	0	0.00
Cargo Totals	12,221,431	11,852,388	3.11	12,221,431	11,852,388	3.11
Belly Freight						
Domestic Enplaned Belly Freight	299,856	197,923	51.50	299,856	197,923	51.50
Domestic Deplaned Belly Freight	387,709	379,146	2.26	387,709	379,146	2.26
International Enplaned Belly Freight	223,412	146,456	52.55	223,412	146,456	52.55
International Deplaned Belly Freight	483,758	555,073	-12.85	483,758	555,073	-12.85
South Terminal-Intl Enplaned Belly Freight	0	0	0.00	0	0	0.00
South Terminal-Intl Deplaned Belly Freight	0	0	0.00	0	0	0.00
Belly Freight Totals	1,394,735	1,278,598	9.08	1,394,735	1,278,598	9.08
Cargo Totals (Mail, Cargo, Belly Freight)	14,139,412	13,583,548	4.09	14,139,412	13,583,548	4.09
<i>Enplaned Cargo Totals</i>	<i>5,805,907</i>	<i>5,615,943</i>	<i>3.38</i>	<i>5,805,907</i>	<i>5,615,943</i>	<i>3.38</i>
<i>Deplaned Cargo Totals</i>	<i>8,333,505</i>	<i>7,967,605</i>	<i>4.59</i>	<i>8,333,505</i>	<i>7,967,605</i>	<i>4.59</i>
<i>Domestic Cargo Totals</i>	<i>12,779,029</i>	<i>11,939,800</i>	<i>7.03</i>	<i>12,779,029</i>	<i>11,939,800</i>	<i>7.03</i>
<i>International Cargo Totals</i>	<i>1,360,383</i>	<i>1,643,748</i>	<i>-17.24</i>	<i>1,360,383</i>	<i>1,643,748</i>	<i>-17.24</i>

CURRENT CARGO RECORD = 40,215,518

RECORD SET = MARCH 2001

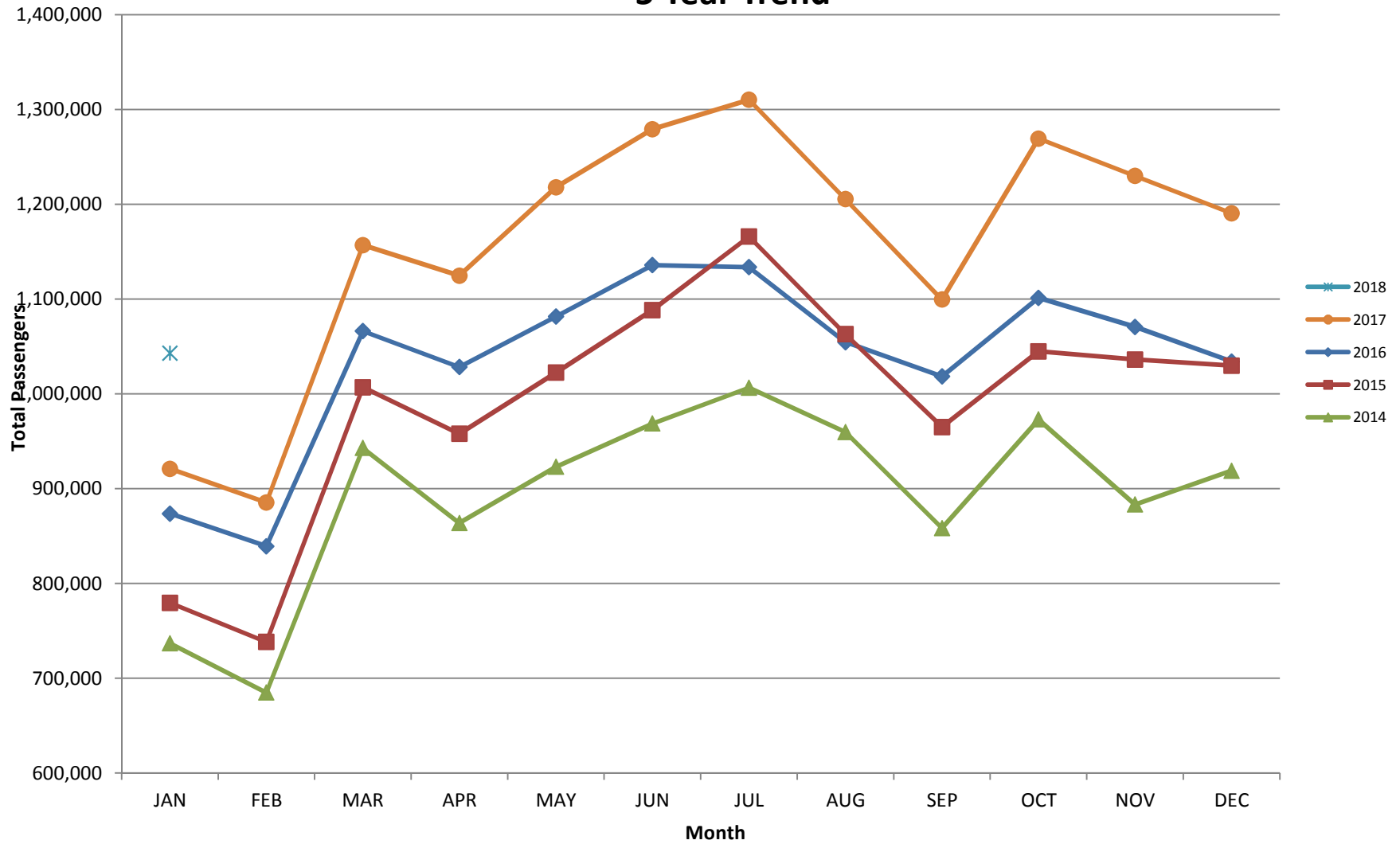
AUS – Airline Codes
January 2018

<u>Code</u>	<u>Carrier</u>
AM	Aerovias de Mexico S.A. de C.V. dba AeroMexico Airlines
AC	Air Canada
AS	Alaska Airlines, Inc.
G4	Allegiant Air, LLC
AA	American Airlines, Inc.
BA	British Airways Plc
Y4	Concesionaria Vuela Compañía de Aviación, S.A.P.I. de C.V dba Volaris
DL	Delta Airlines
F9	Frontier Airlines
B6	JetBlue Airways Corp.
WN	Southwest Airlines
SY	Sun Country Airlines/ MN Airlines, LLC
WQ	Swift Air
UA	United Airlines, Inc.
VC	VIA Airlines
VX	Virgin America Inc.

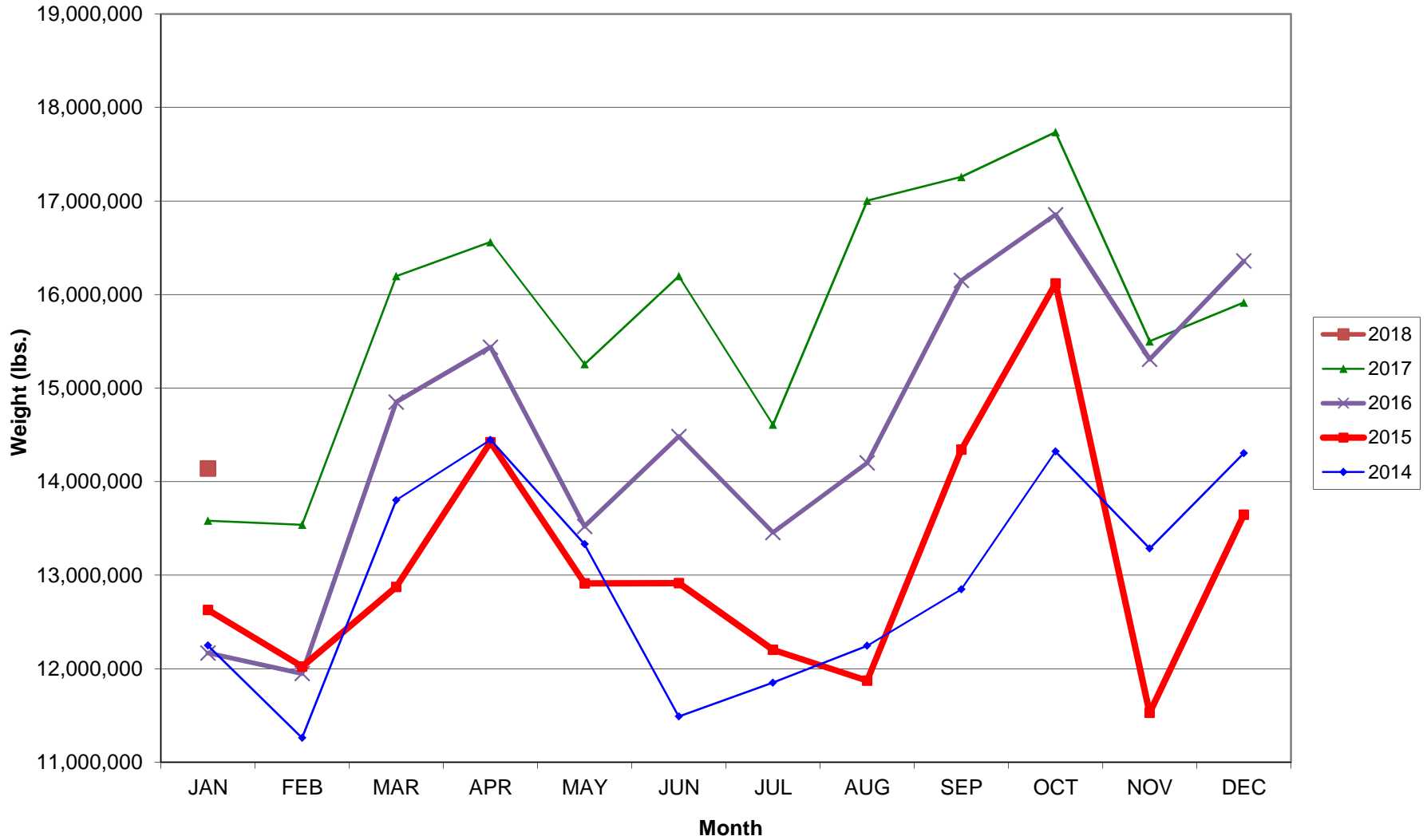
.

AUSTIN PASSENGER TRAFFIC

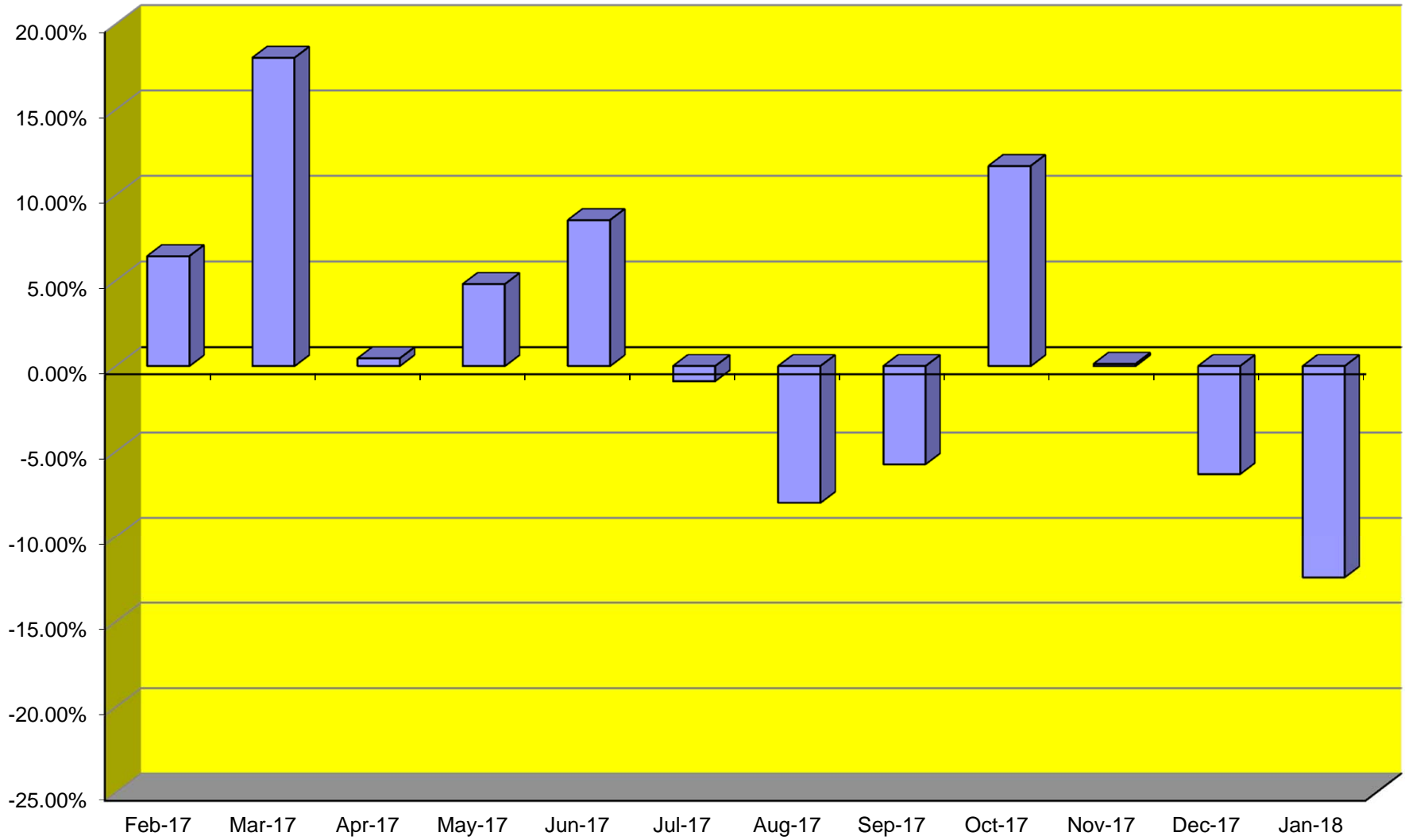
5 Year Trend



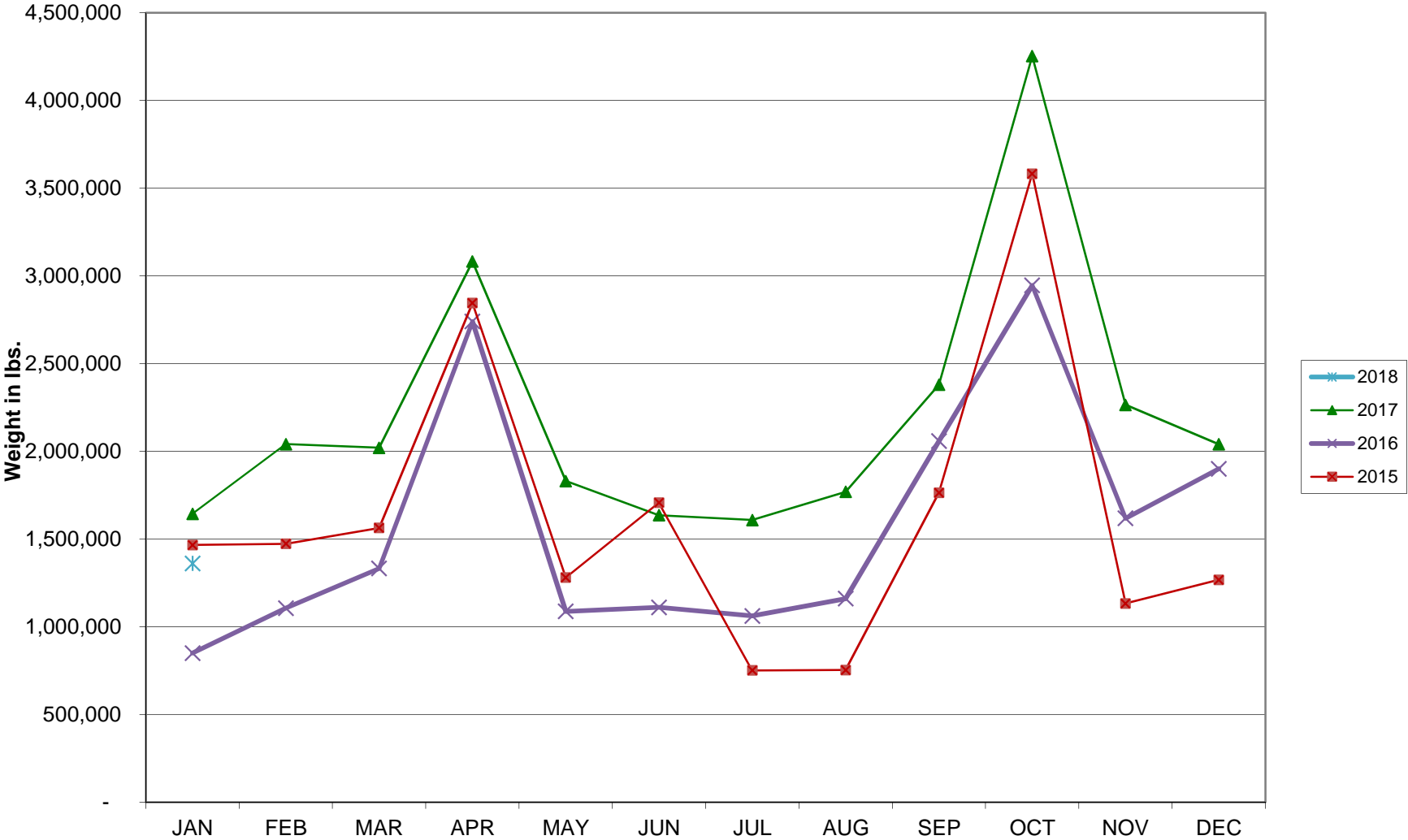
TOTAL CARGO POUNDAGE - AUSTIN, TEXAS



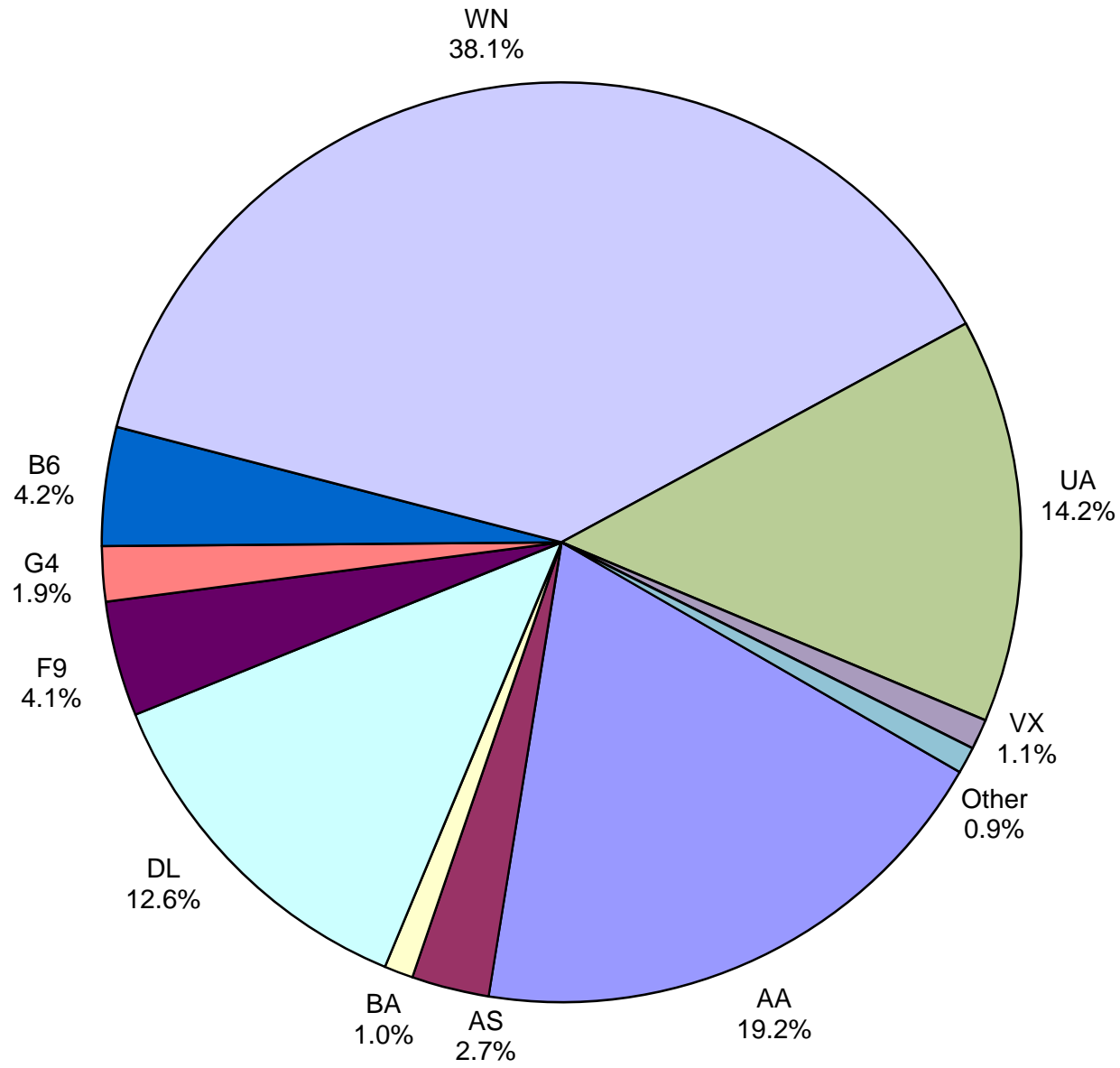
Monthly % Change in Average Daily Passengers



HISTORY OF INTERNATIONAL AIR CARGO



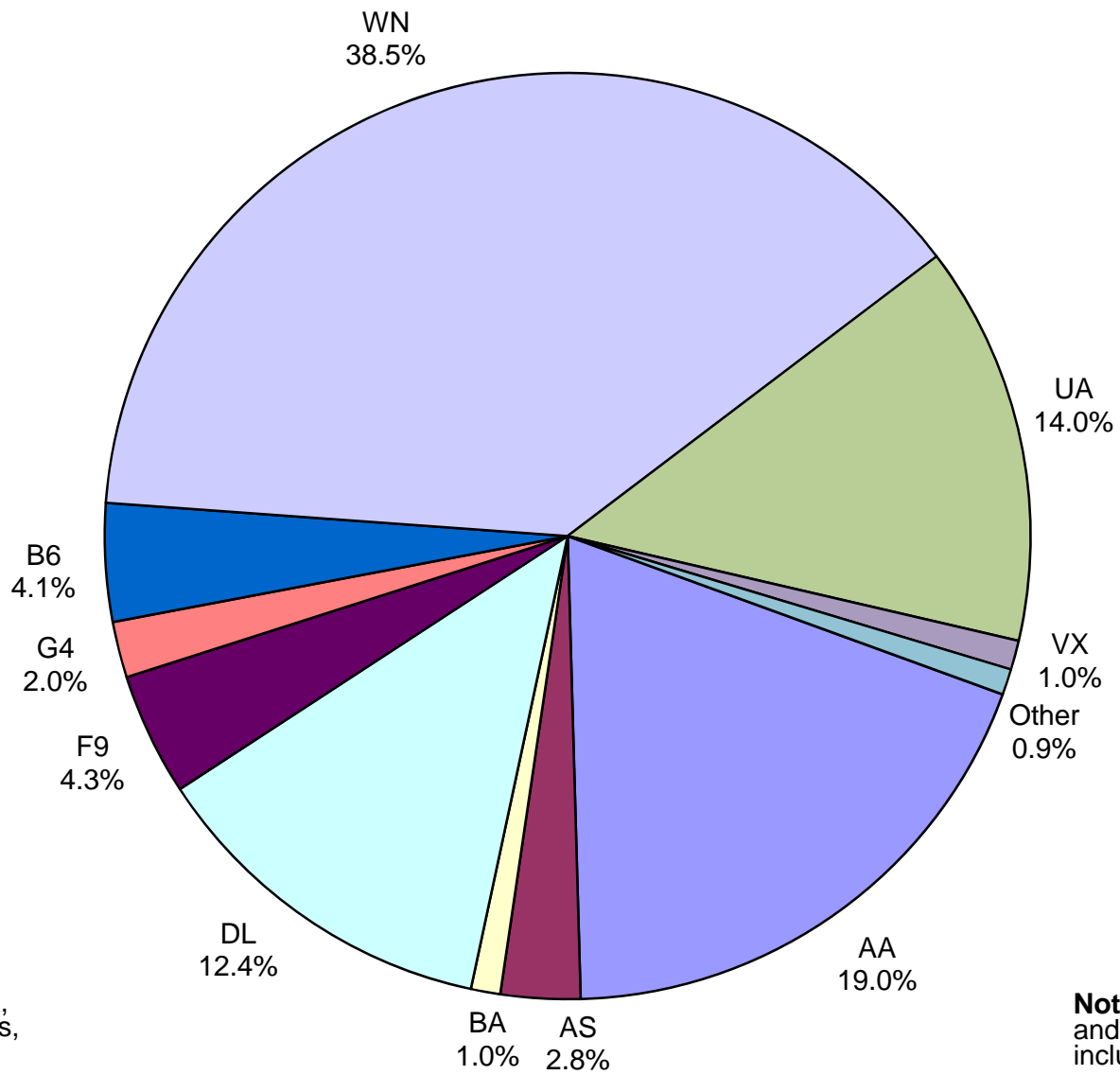
**Total Passengers
January 2018**



Other: Aeromexico, Air Canada LLC, Sun Country, Swift Air, VIA Airlines and Concesionaria Vuela dba Volaris

Note: American, Delta and United Airlines percentages include Affiliates.

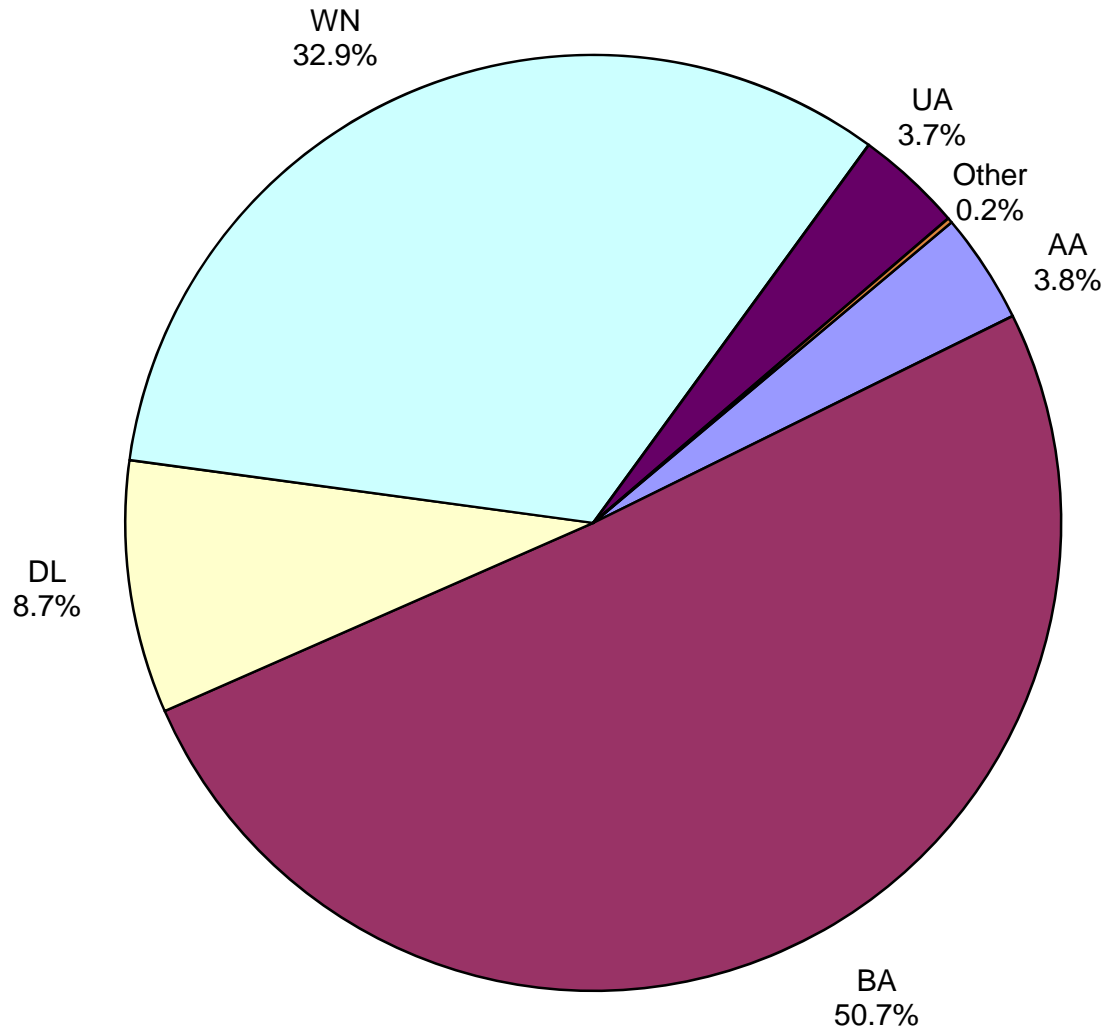
**All Passenger Carriers
Enplaned Revenue Passengers
January 2018**



Other: Aeromexico, Air Canada, Concesionaria Vuela dba Volaris, Sun Country, Swift Air and VIA Airlines

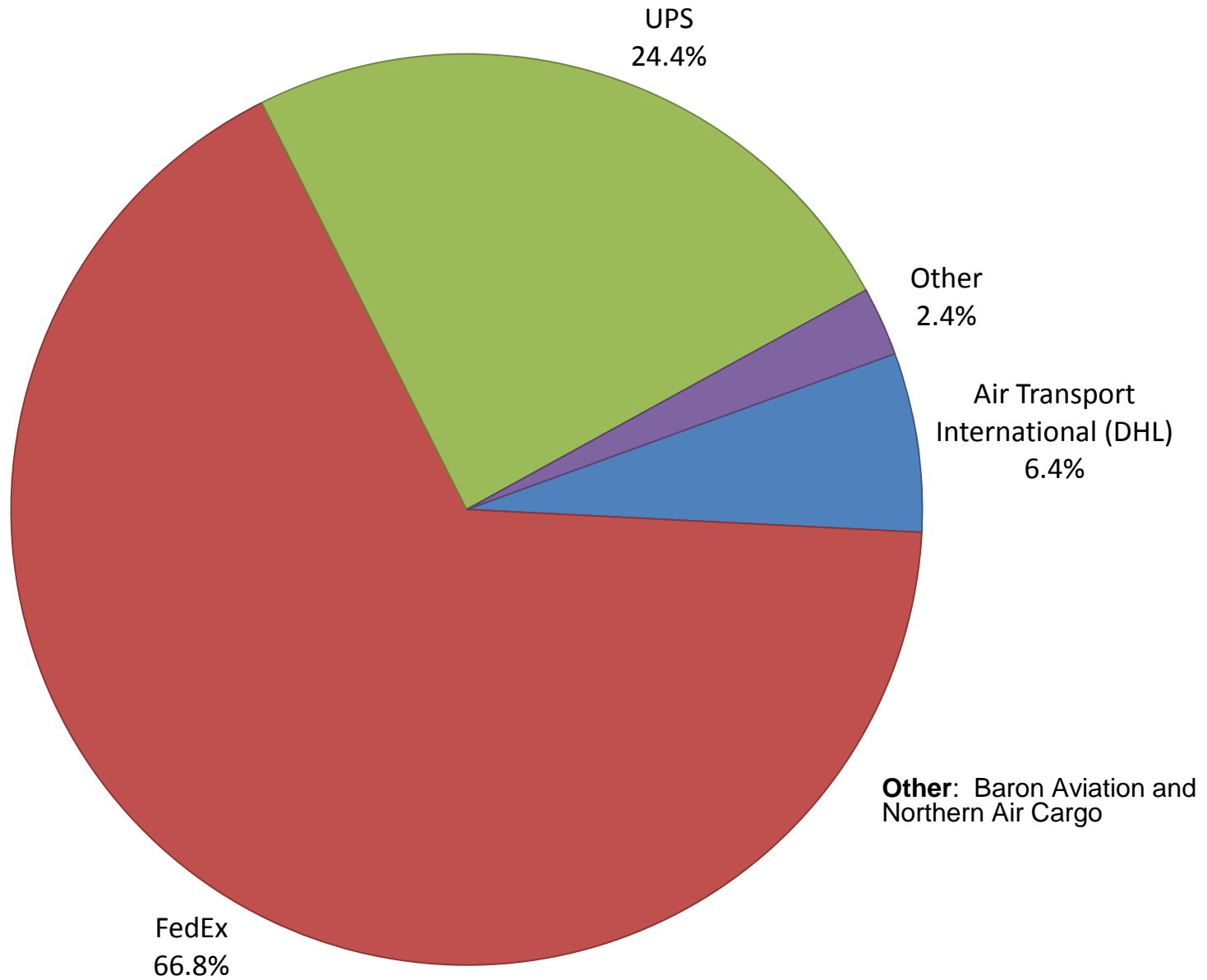
Note: American/US Airways, Delta and United Airlines percentages include Affiliates.

**AUS Belly Freight Market Shares
January 2018**

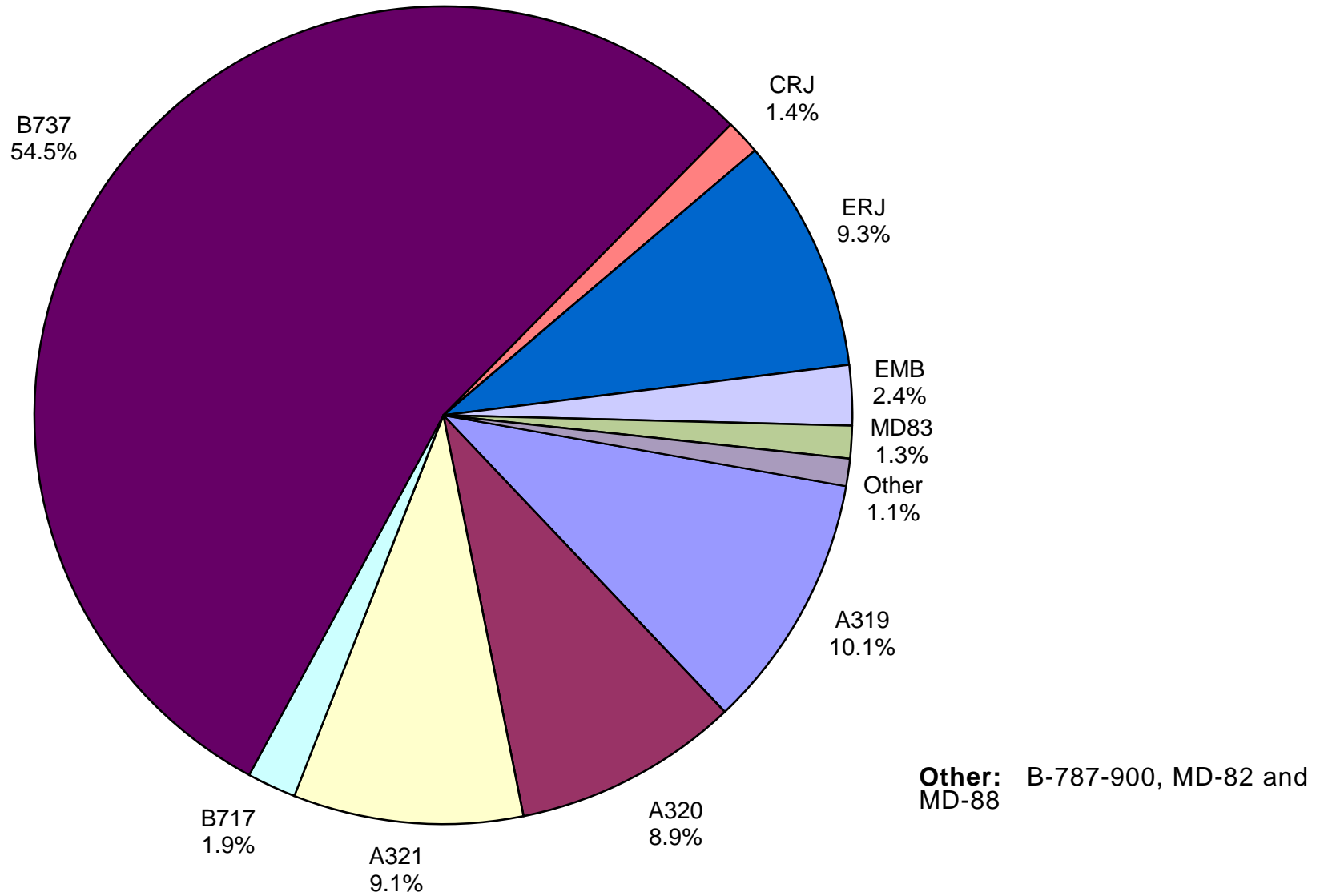


Other = Alaska Airlines

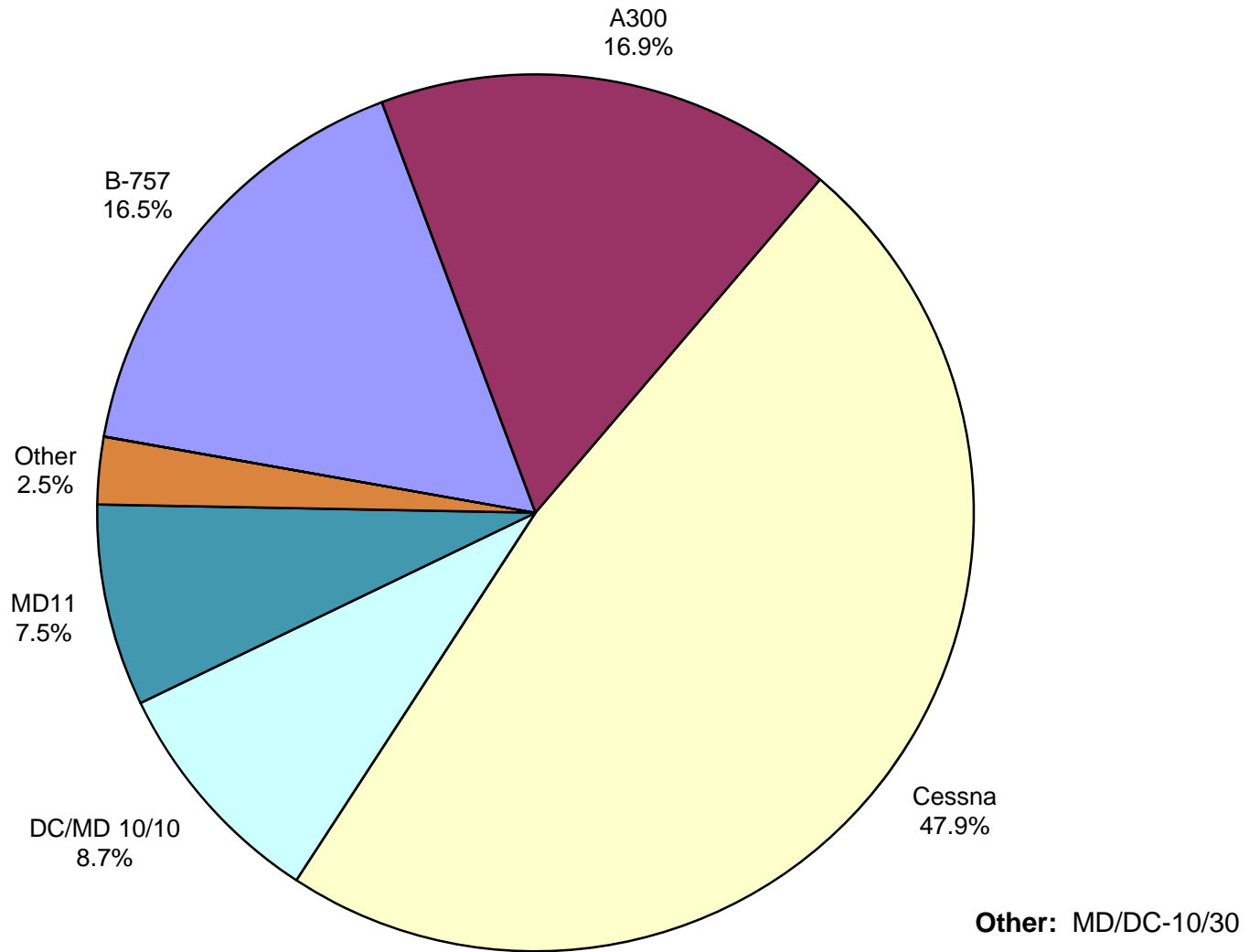
Air Cargo Market Share January 2018



**AUS Scheduled Passenger Aircraft Fleet Mix
January 2018**



**AUS Scheduled Cargo Aircraft Fleet Mix
January 2018**



Austin-Bergstrom International Airport

PAX Detail Report - January, 2018

Company	01/2018	01/2017	Period		YTD 2018	YTD 2017	YTD		2018 Share	2017 Share	Share Diff
			Difference	Change			Difference	Change			
Aerovias de Mexico S.A. de C.V.	3,400	2,932	468	16.0	3,400	2,932	468	16.0	0.3	0.3	0.0
Air Canada	3,216	3,394	-178	-5.2	3,216	3,394	-178	-5.2	0.3	0.4	-0.1
Alaska Airlines	28,425	17,395	11,030	63.4	28,425	17,395	11,030	63.4	2.7	1.9	0.8
Allegiant Air	20,197	12,556	7,641	60.9	20,197	12,556	7,641	60.9	1.9	1.4	0.6
American Airlines	200,256	190,284	9,972	5.2	200,256	190,284	9,972	5.2	19.2	20.7	-1.5
British Airways	10,581	9,877	704	7.1	10,581	9,877	704	7.1	1.0	1.1	-0.1
Concesionaria Vuela Compañía de Aviación, S.A.P.I. de C.V.	1,224	2,183	-959	-43.9	1,224	2,183	-959	-43.9	0.1	0.2	-0.1
Delta Air Lines	131,494	109,863	21,631	19.7	131,494	109,863	21,631	19.7	12.6	11.9	0.7
Frontier Airlines	42,241	23,522	18,719	79.6	42,241	23,522	18,719	79.6	4.1	2.6	1.5
JetBlue Airways	43,464	43,752	-288	-0.7	43,464	43,752	-288	-0.7	4.2	4.8	-0.6
Southwest Airlines	396,931	357,671	39,260	11.0	396,931	357,671	39,260	11.0	38.1	38.8	-0.8
Sun Country Airlines	669	555	114	20.5	669	555	114	20.5	0.1	0.1	0.0
Swift Air	266	0	266	0.0	266	0	266	0.0	0.0	0.0	0.0
Texas Sky	0	126	-126	-100.0	0	126	-126	-100.0	0.0	0.0	0.0
United Airlines	148,312	134,998	13,314	9.9	148,312	134,998	13,314	9.9	14.2	14.7	-0.4
VIA Airlines	1,041	0	1,041	0.0	1,041	0	1,041	0.0	0.1	0.0	0.1
Virgin America	11,117	11,838	-721	-6.1	11,117	11,838	-721	-6.1	1.1	1.3	-0.2
Report Totals	1,042,834	920,946	121,888	13.2%	1,042,834	920,946	121,888	13.2%			

Statistics Included in Report:

Domestic Passengers:	Enplaned Revenue, Deplaned Revenue, Enplaned Non-Revenue, Deplaned Non-Revenue
International Passengers:	Enplaned Revenue, Deplaned Revenue, Enplaned Non-Revenue, Deplaned Non-Revenue
International Pre-Cleared Passengers:	Enplaned Revenue, Deplaned Revenue, Enplaned Non-Revenue, Deplaned Non-Revenue
South Terminal Domestic Passengers:	Enplaned Revenue, Deplaned Revenue, Enplaned Non-Revenue, Deplaned Non-Revenue

Austin-Bergstrom International Airport

Summary Landing Report

Landing Type: Total

Month	2018		2017		2016		% Change 2018 - 2017		% Change 2017 - 2016	
	Count	Weight	Count	Weight	Count	Weight	Count	Weight	Count	Weight
January	5,086	688,923,110	4,768	612,688,871	4,622	560,718,408	6.67%	12.44%	3.16%	9.27%
February			4,357	552,711,639	4,387	527,452,920			-0.68%	4.79%
March			5,307	685,661,659	5,151	639,655,137			3.03%	7.19%
April			5,179	689,402,051	4,892	614,643,711			5.87%	12.16%
May			5,529	736,484,083	5,096	630,853,941			8.50%	16.74%
June			5,603	752,628,599	5,179	651,537,449			8.19%	15.52%
July			5,698	763,088,836	5,233	663,015,597			8.89%	15.09%
August			5,490	741,110,019	5,181	660,099,361			5.96%	12.27%
September			5,046	679,381,339	4,738	623,397,035			6.50%	8.98%
October			5,448	743,973,610	4,923	649,182,343			10.66%	14.60%
November			5,289	718,179,948	4,775	624,303,554			10.76%	15.04%
December			5,442	737,424,963	4,893	629,611,090			11.22%	17.12%
Totals for Selected Period	5,086	688,923,110	4,768	612,688,871	4,622	560,718,408	6.67%	12.44%	3.16%	9.27%
Yearly Totals	5,086	688,923,110	63,156	8,412,735,617	59,070	7,474,470,546			6.92%	12.55%