

Austin-Bergstrom International Airport

Aviation Activity Report

Calendar Year 2017 vs 2016

	03/2017	03/2016	Percent Change	01/2017 - 03/2017	01/2016 - 03/2016	Percent Change
Passenger Activity						
Domestic Enplaned Revenue	547,253	504,435	8.49	1,399,673	1,315,306	6.41
Domestic Deplaned Revenue	556,890	516,774	7.76	1,422,320	1,342,097	5.98
International Enplaned Revenue	12,057	9,232	30.60	30,466	23,882	27.57
International Deplaned Revenue	11,759	9,303	26.40	31,344	25,754	21.71
Domestic Enplaned Non-Revenue	13,062	11,434	14.24	35,431	31,724	11.69
Domestic Deplaned Non-Revenue	12,730	11,321	12.45	34,125	30,464	12.02
International Enplaned Non-Revenue	110	96	14.58	239	287	-16.72
International Deplaned Non-Revenue	62	120	-48.33	197	291	-32.30
Intl Enplaned Pre-Cleared Revenue	1,384	1,718	-19.44	4,408	4,219	4.48
Intl Deplaned Pre-Cleared Revenue	1,572	1,663	-5.47	4,855	4,761	1.97
Intl Enplaned Pre-Cleared Non-Revenue	21	22	-4.55	67	60	11.67
Intl Deplaned Pre-Cleared Non-Revenue	28	28	0.00	74	74	0.00
Passenger Totals	1,156,928	1,066,146	8.51	2,963,199	2,778,919	6.63
<i>Enplaned Passenger Totals</i>	<i>573,887</i>	<i>526,934</i>	<i>8.91</i>	<i>1,470,284</i>	<i>1,375,478</i>	<i>6.89</i>
<i>Deplaned Passenger Totals</i>	<i>583,041</i>	<i>539,209</i>	<i>8.13</i>	<i>1,492,915</i>	<i>1,403,441</i>	<i>6.38</i>
<i>Domestic Passenger Totals</i>	<i>1,129,935</i>	<i>1,043,964</i>	<i>8.24</i>	<i>2,891,549</i>	<i>2,719,591</i>	<i>6.32</i>
<i>International Passenger Totals</i>	<i>26,993</i>	<i>22,182</i>	<i>21.69</i>	<i>71,650</i>	<i>59,328</i>	<i>20.77</i>

CURRENT PASSENGER RECORD = 1,165,811 RECORD SET = JULY 2015

Aircraft Operations

Air Carrier	10,329	9,979	3.51	28,193	27,489	2.56
Commuter & Air Taxi	1,533	1,460	5.00	3,848	3,687	4.37
Military	894	960	-6.87	2,626	2,577	1.90
General Aviation						
Itinerant	4,577	4,224	8.36	12,821	12,134	5.66
Local	206	264	-21.97	524	844	-37.91
Total G.A.	4,783	4,488	6.57	13,345	12,978	2.83
Total Operations	17,539	16,887	3.86	48,012	46,731	2.74

Austin-Bergstrom International Airport

Aviation Activity Report

Calendar Year 2017 vs 2016

	03/2017	03/2016	Percent Change	01/2017 - 03/2017	01/2016 - 03/2016	Percent Change
<u>Cargo Activity</u>						
Mail						
Domestic Enplaned Mail	214,099	58,579	265.49	563,626	305,304	84.61
Domestic Deplaned Mail	361,393	224,068	61.29	909,762	658,119	38.24
International Enplaned Mail	0	0	0.00	0	0	0.00
International Deplaned Mail	0	0	0.00	0	0	0.00
Mail Totals	575,492	282,647	103.61	1,473,388	963,423	52.93
Cargo						
Domestic Enplaned Cargo	5,298,906	5,365,610	-1.24	14,273,877	15,146,151	-5.76
Domestic Deplaned Cargo	7,506,344	7,069,506	6.18	19,877,642	17,525,817	13.42
International Enplaned Cargo	714,771	347,285	105.82	1,952,706	765,769	155.00
International Deplaned Cargo	263,351	175,166	50.34	803,082	410,284	95.74
Cargo Totals	13,783,372	12,957,567	6.37	36,907,307	33,848,021	9.04
Belly Freight						
Domestic Enplaned Belly Freight	265,588	277,886	-4.43	657,636	716,229	-8.18
Domestic Deplaned Belly Freight	530,646	523,281	1.41	1,333,067	1,327,409	0.43
International Enplaned Belly Freight	248,653	222,024	11.99	694,793	649,247	7.02
International Deplaned Belly Freight	793,676	587,563	35.08	2,254,933	1,462,663	54.17
Belly Freight Totals	1,838,563	1,610,754	14.14	4,940,429	4,155,548	18.89
Cargo Totals (Mail, Cargo, Belly Freight)	16,197,427	14,850,968	9.07	43,321,124	38,966,992	11.17
<i>Enplaned Cargo Totals</i>	<i>6,742,017</i>	<i>6,271,384</i>	<i>7.51</i>	<i>18,142,638</i>	<i>17,582,700</i>	<i>3.19</i>
<i>Deplaned Cargo Totals</i>	<i>9,455,410</i>	<i>8,579,584</i>	<i>10.21</i>	<i>25,178,486</i>	<i>21,384,292</i>	<i>17.75</i>
<i>Domestic Cargo Totals</i>	<i>14,176,976</i>	<i>13,518,930</i>	<i>4.87</i>	<i>37,615,610</i>	<i>35,679,029</i>	<i>5.43</i>
<i>International Cargo Totals</i>	<i>2,020,451</i>	<i>1,332,038</i>	<i>51.68</i>	<i>5,705,514</i>	<i>3,287,963</i>	<i>73.53</i>

CURRENT CARGO RECORD = 40,215,518

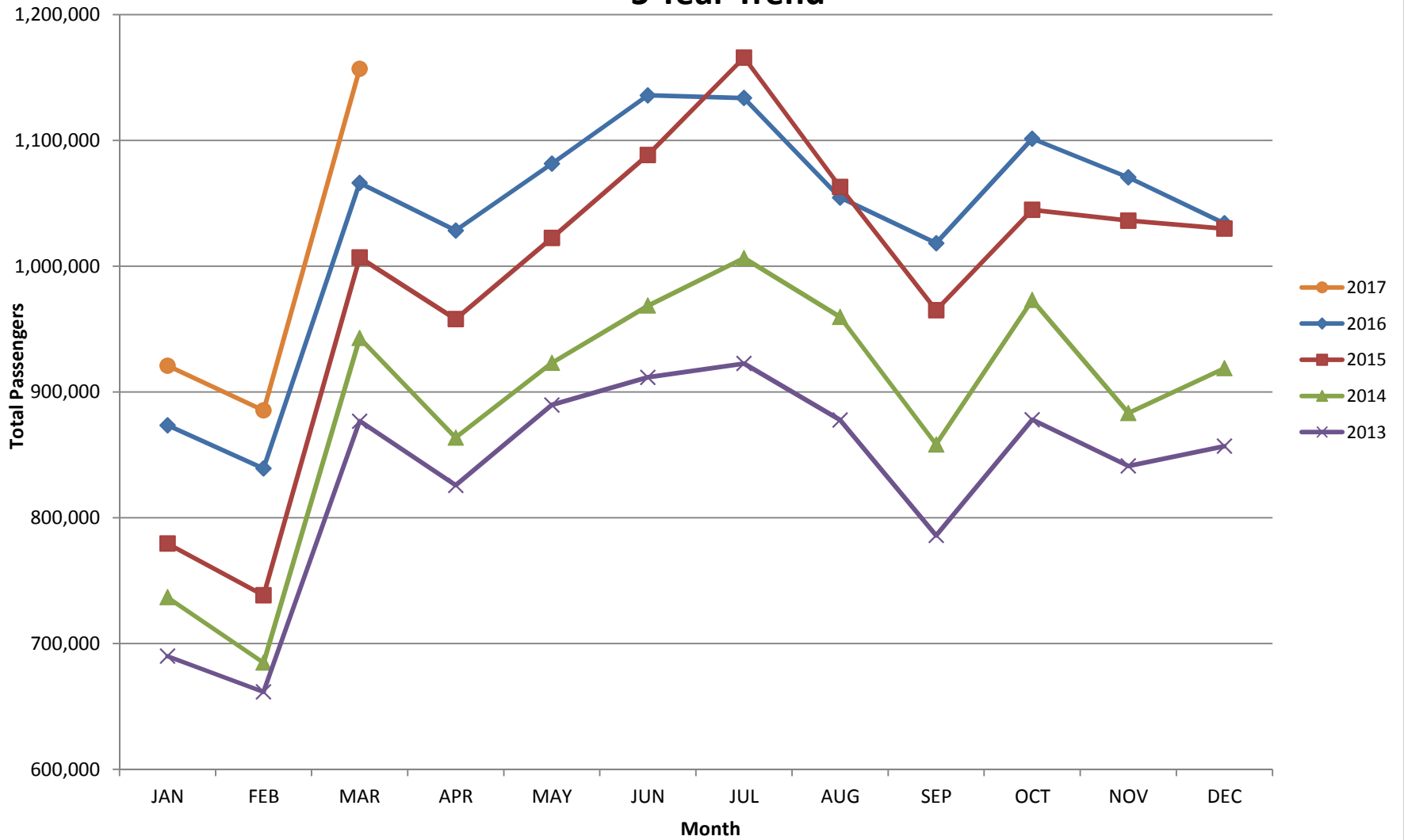
RECORD SET = MARCH 2001

AUS – Airline Codes
March 2017

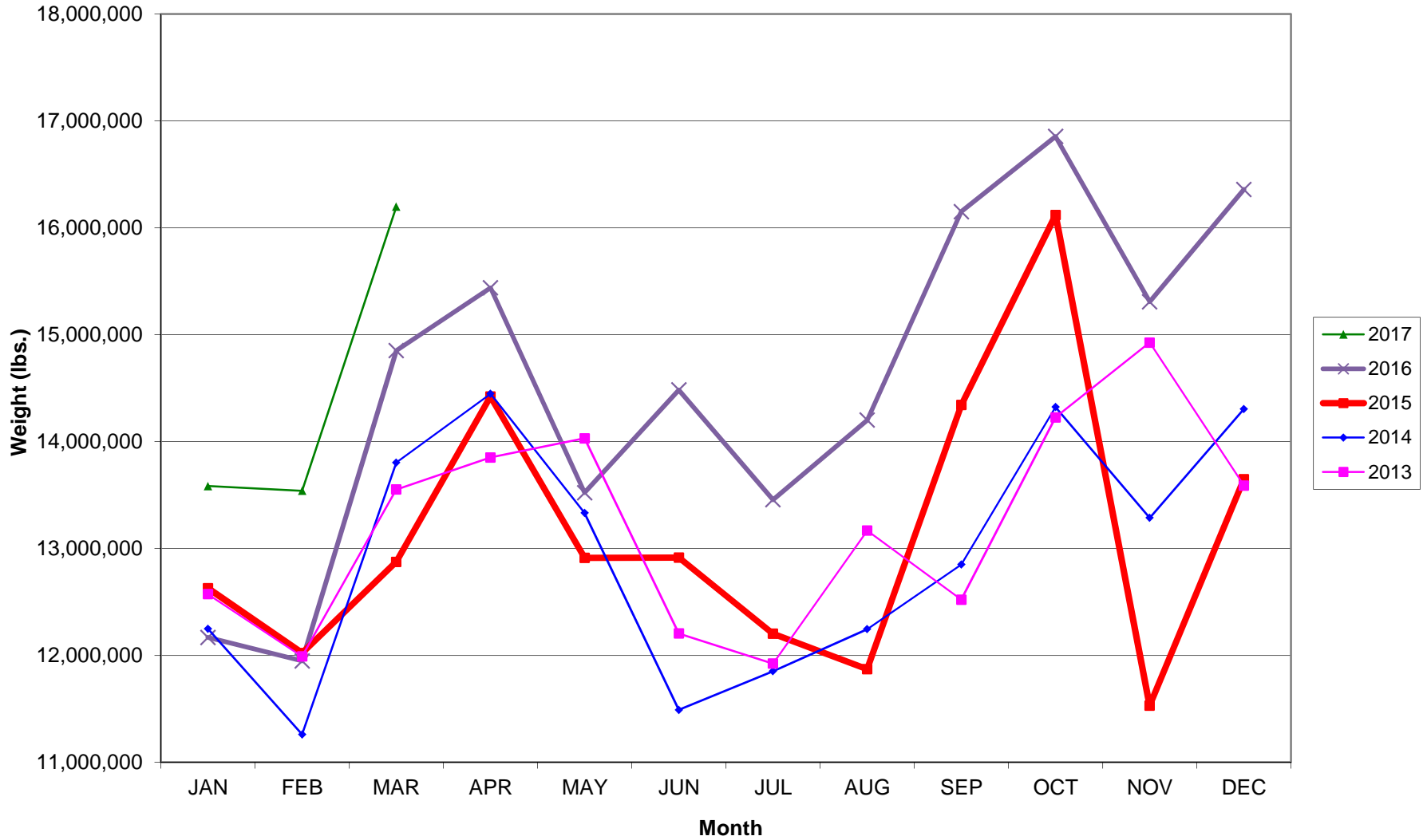
<u>Code</u>	<u>Carrier</u>
AM	AeroMexico Airlines
AC	Air Canada
AS	Alaska Airlines, Inc.
G4	Allegiant Air, LLC
AA	American Airlines, Inc.
BA	British Airways Plc
DL	Delta Airlines
F9	Frontier Airlines
B6	JetBlue Airways Corp.
P1	Public Charters, Inc. dba Texas Sky
WN	Southwest Airlines
SY	Sun Country Airlines/ MN Airlines, LLC
UA	United Airlines, Inc.
VX	Virgin America Inc.
Y4	Volaris/Concesionaria Vuela Compañía de Aviación, S.A.P.I. de C.V.

AUSTIN PASSENGER TRAFFIC

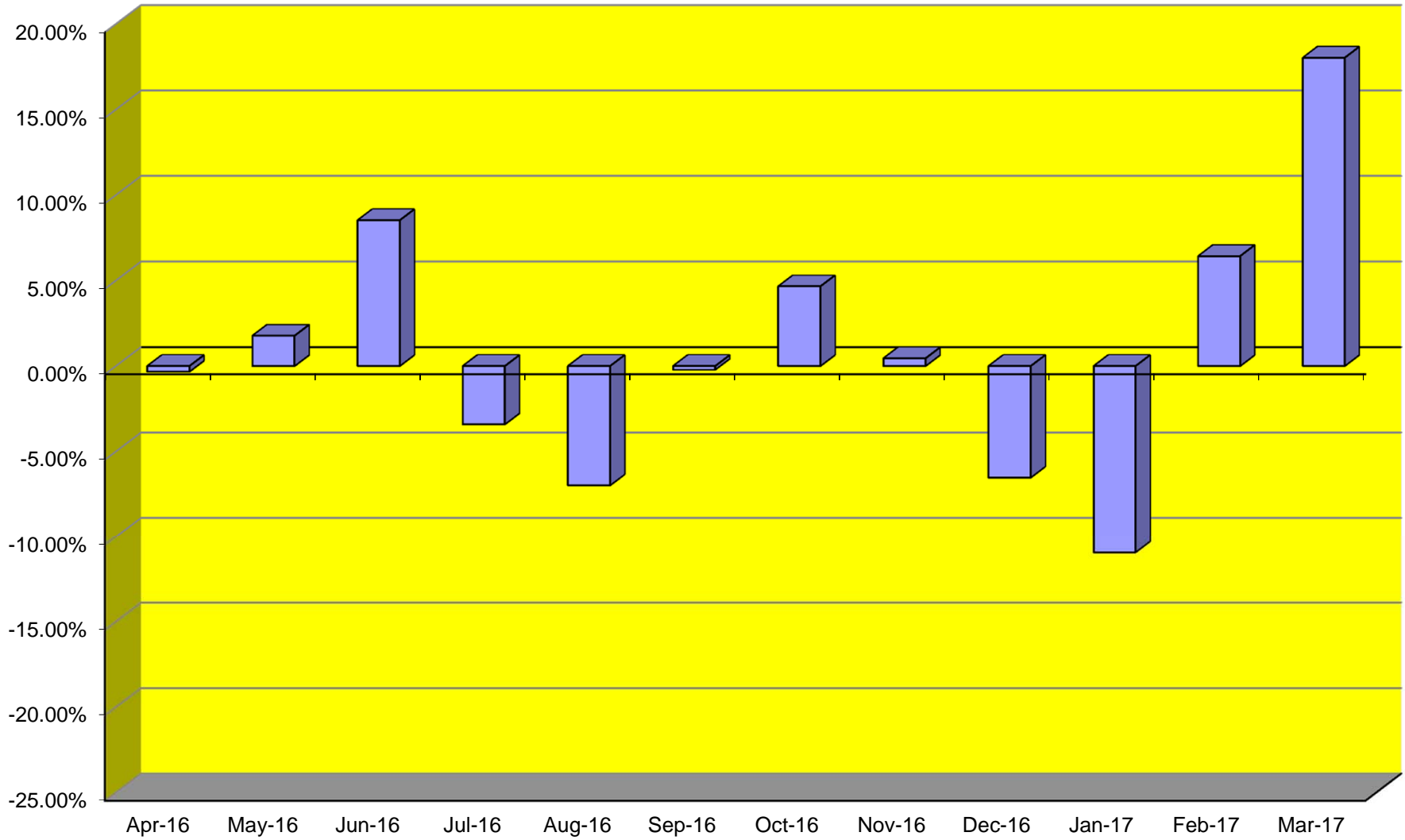
5 Year Trend



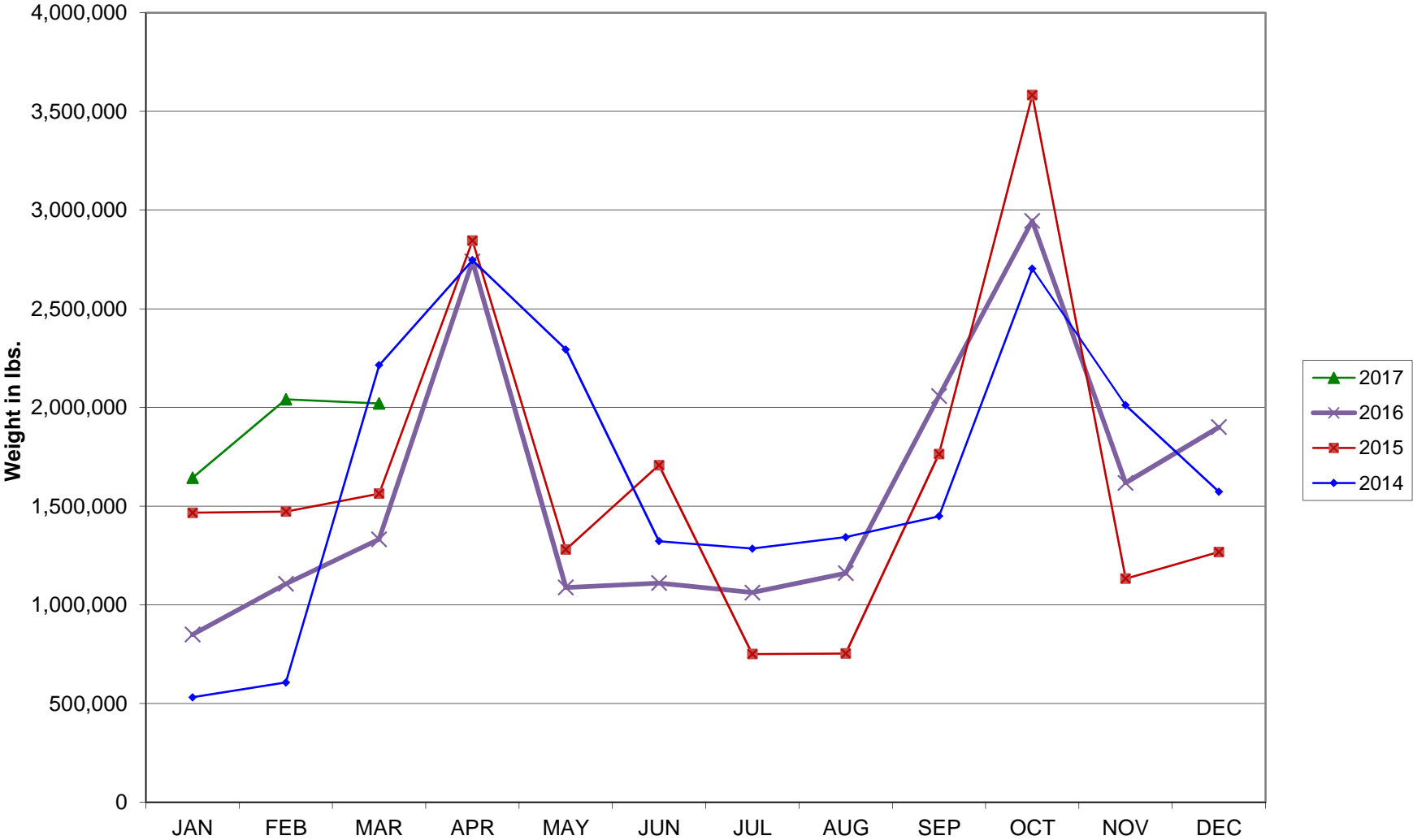
TOTAL CARGO POUNDAGE - AUSTIN, TEXAS



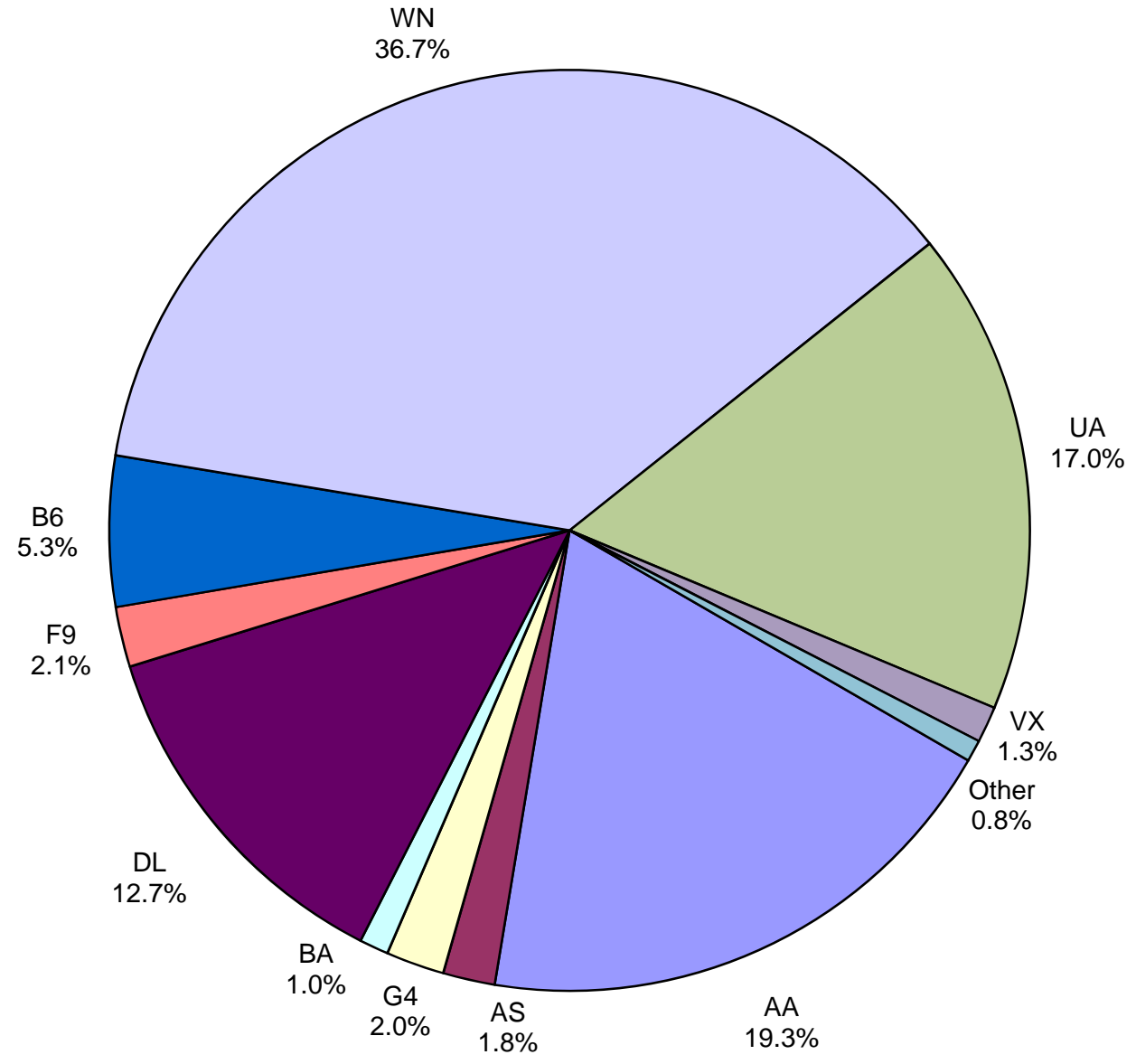
Monthly % Change in Average Daily Passengers



HISTORY OF INTERNATIONAL AIR CARGO



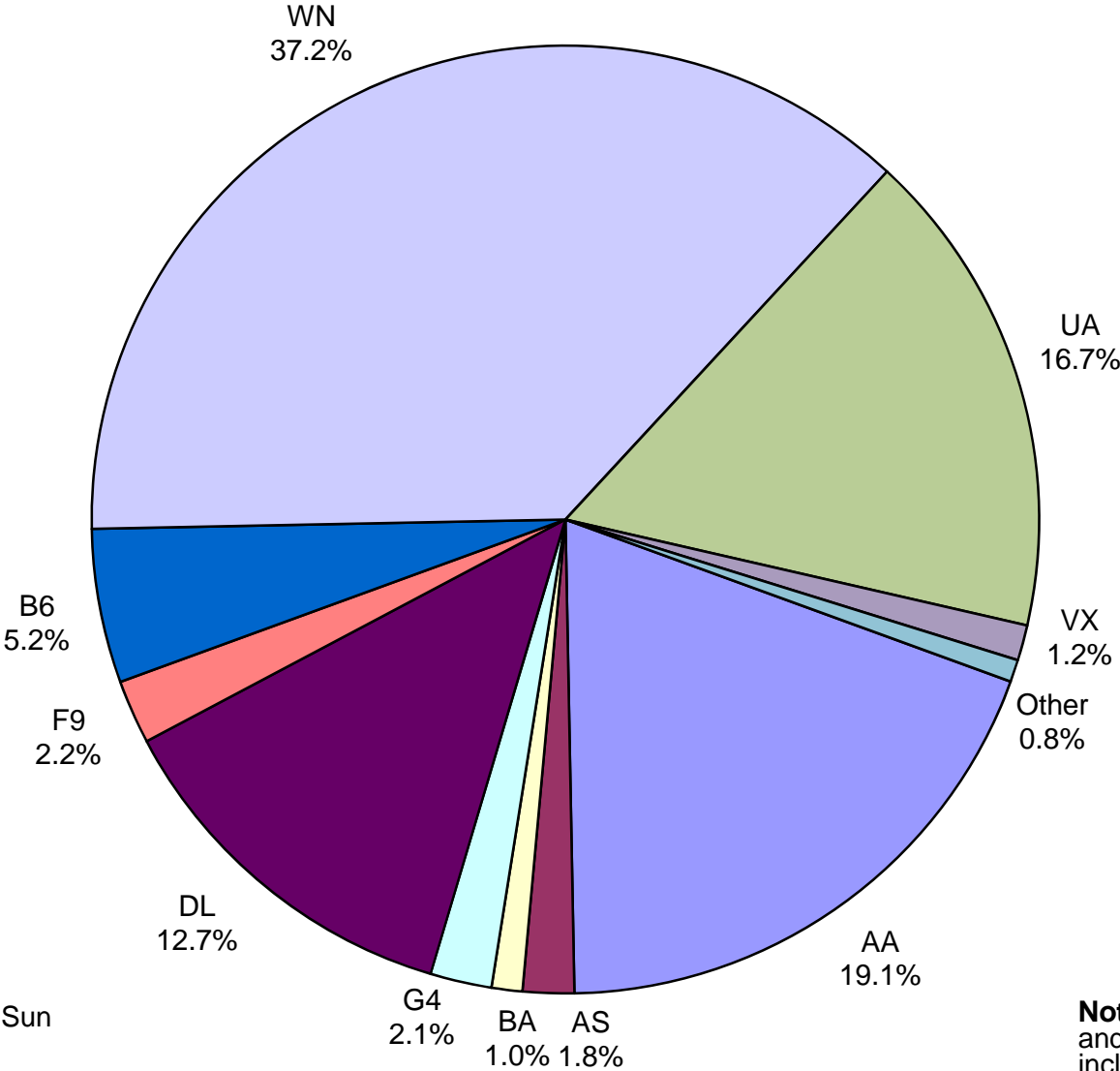
**Total Passengers
March 2017**



Other: Aeromexico, Air Canada, Sun Country, Texas Sky and Volaris

Note: American, Delta and United Airlines percentages include Affiliates.

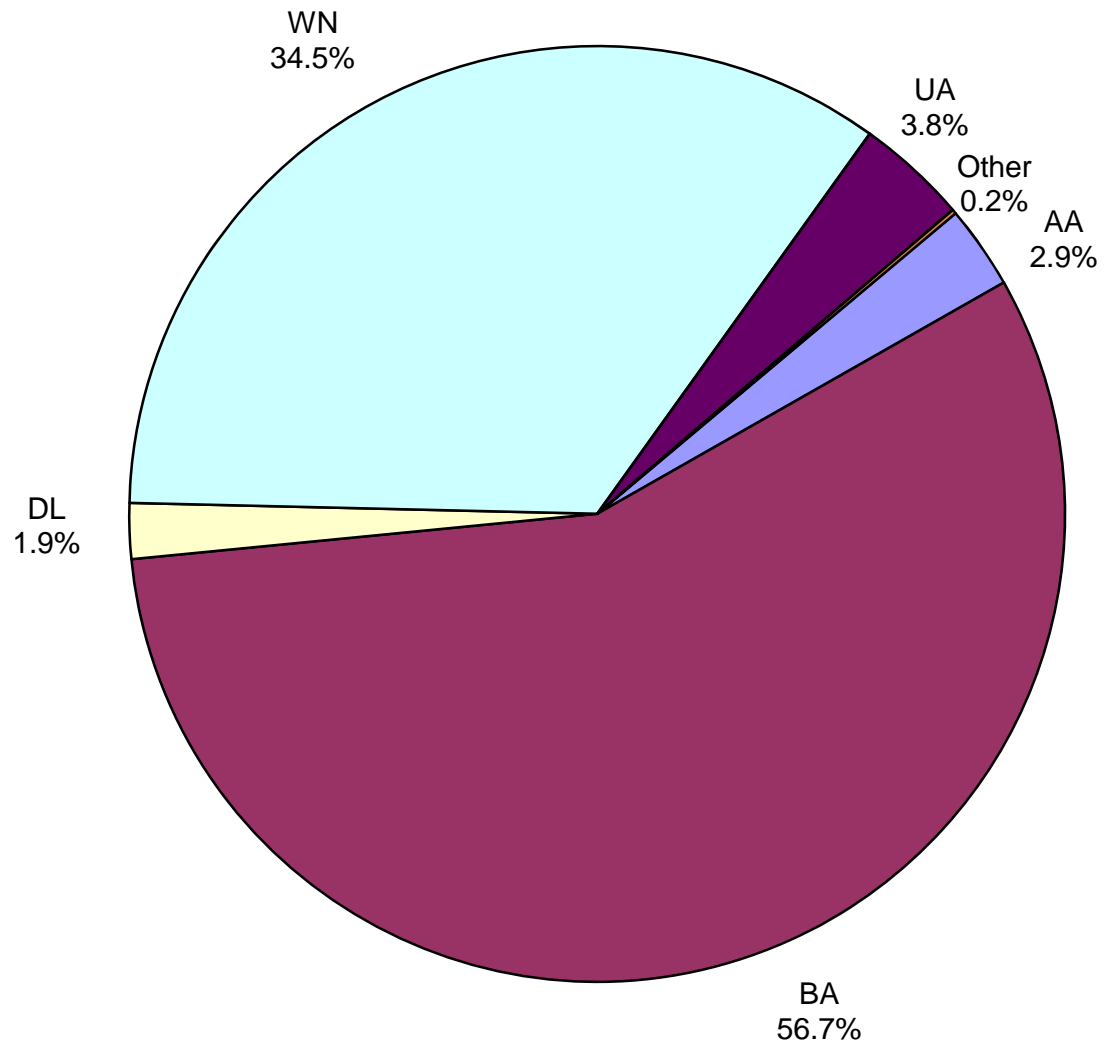
**All Passenger Carriers
Enplaned Revenue Passengers
March 2017**



Other: Aeromexico, Air Canada, Sun Country, Texas Sky and Volaris

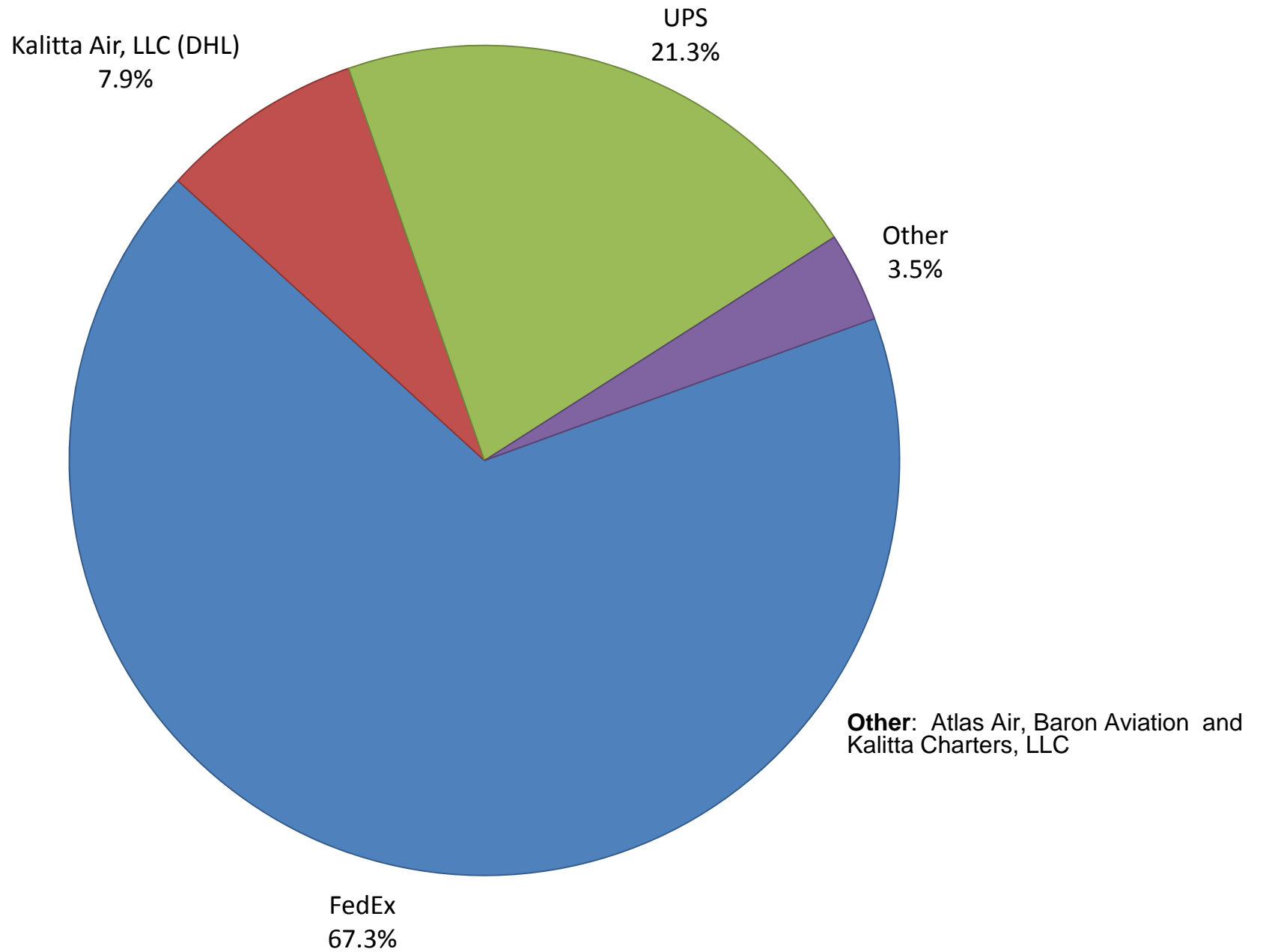
Note: American/US Airways, Delta and United Airlines percentages include Affiliates.

**AUS Belly Freight Market Shares
March 2017**

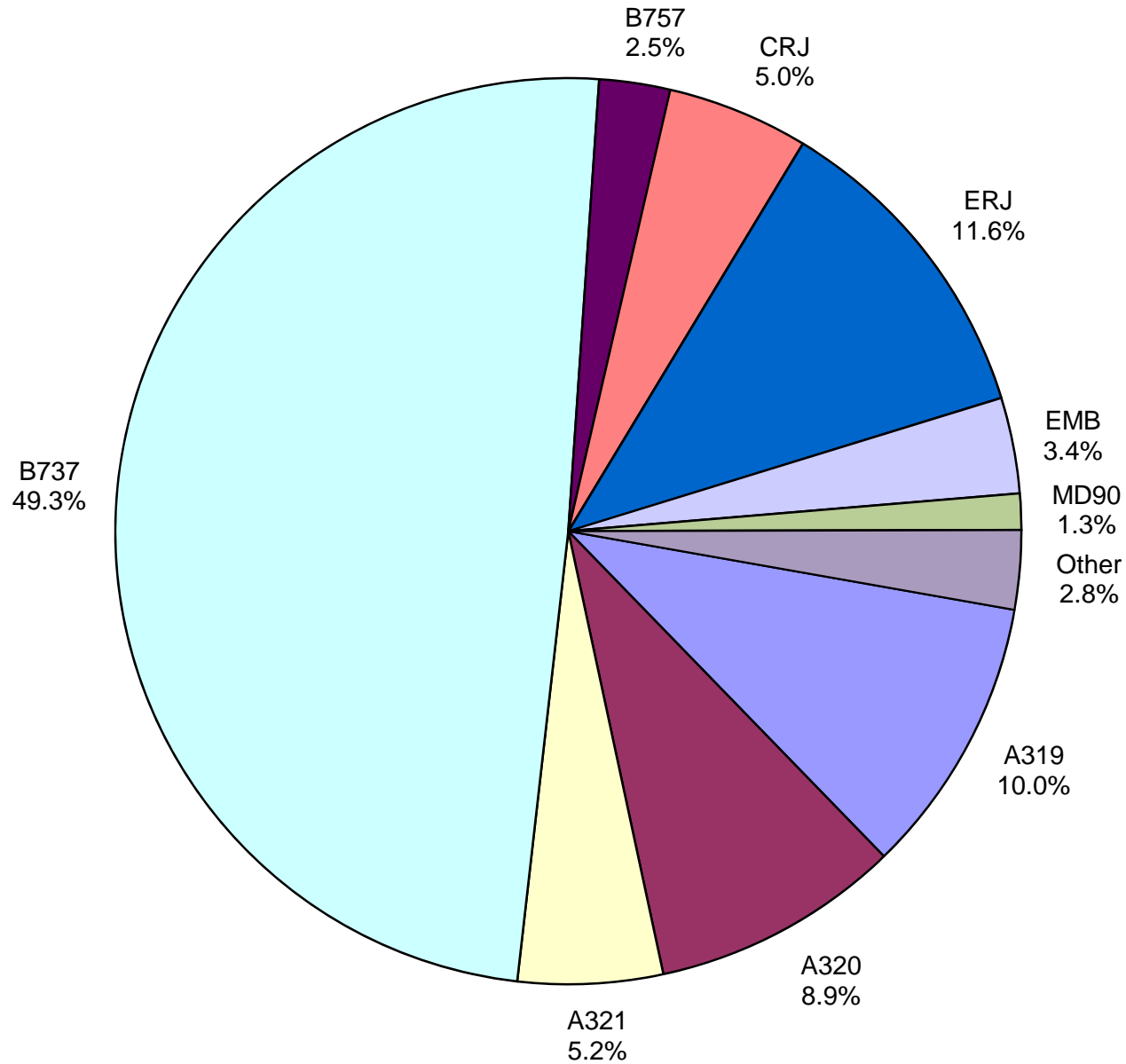


Other = Alaska Airlines

Air Cargo Market Share March 2017

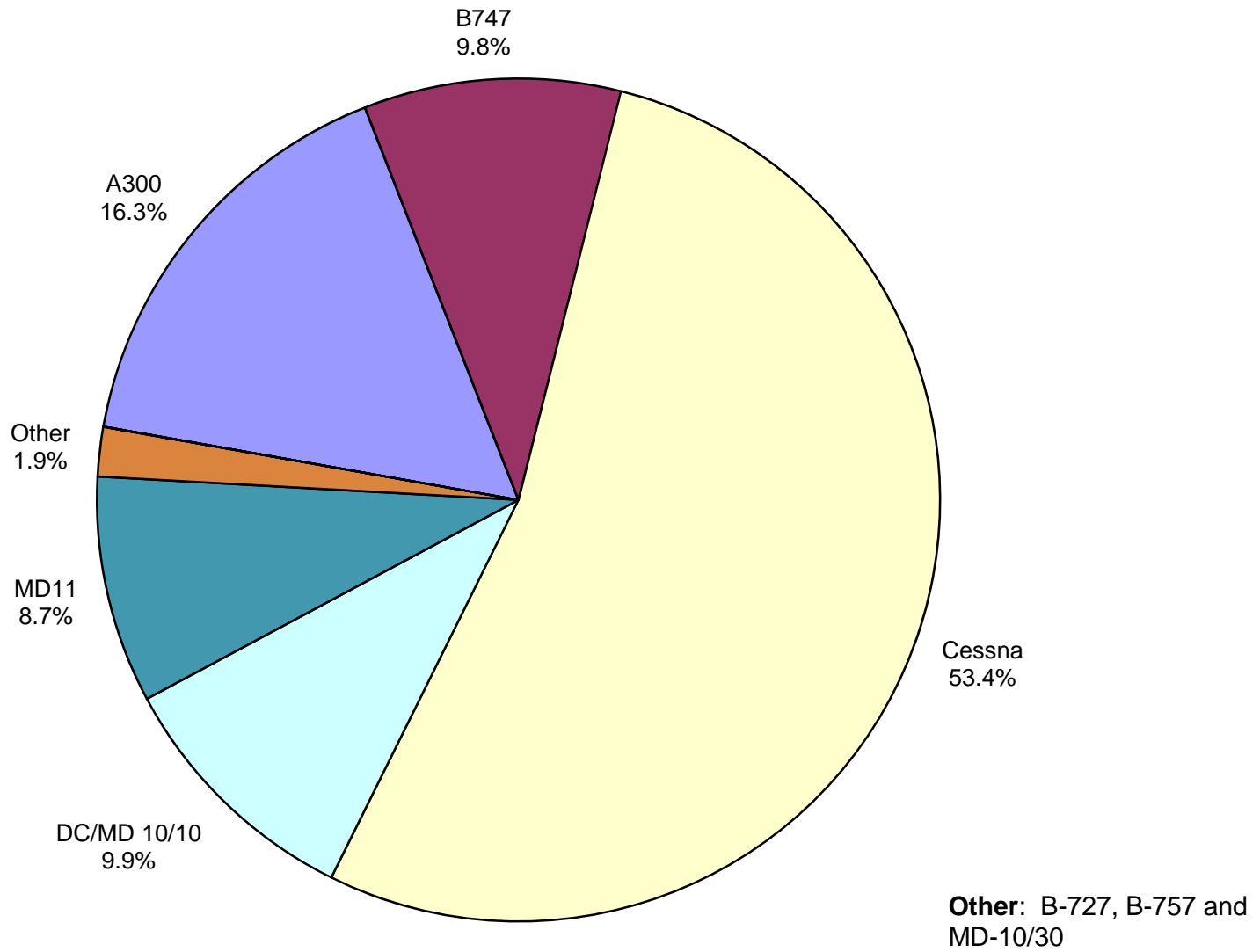


**AUS Scheduled Passenger Aircraft Fleet Mix
March 2017**



Other: B-717, B-767,
B-787, BAE-3200,
BAE-4100, MD-80, MD-
83, MD-88

**AUS Scheduled Cargo Aircraft Fleet Mix
March 2017**



Austin-Bergstrom International Airport

PAX Detail Report - March, 2017

Company	03/2017	03/2016	Period		YTD 2017	YTD 2016	YTD		2017 Share	2016 Share	Share Diff
			Difference	Change			Difference	Change			
AeroMexico Airlines/Aerovias de Mexico, S.A. de C.V.	3,269	0	3,269	0.0	8,732	0	8,732	0.0	0.3	0.0	0.3
Air Canada	3,005	3,431	-426	-12.4	9,404	9,114	290	3.2	0.3	0.3	0.0
Alaska Airlines, Inc.	21,128	17,894	3,234	18.1	55,654	43,927	11,727	26.7	1.9	1.6	0.3
Allegiant Air, LLC	23,736	14,984	8,752	58.4	51,572	33,999	17,573	51.7	1.7	1.2	0.5
American Airlines, Inc.	222,907	211,091	11,816	5.6	594,890	566,616	28,274	5.0	20.1	20.4	-0.3
British Airways Plc	11,871	11,095	776	7.0	29,572	28,411	1,161	4.1	1.0	1.0	0.0
Delta Air Lines	147,098	133,647	13,451	10.1	362,026	335,191	26,835	8.0	12.2	12.1	0.2
Frontier Airlines, Inc.	24,450	16,615	7,835	47.2	70,011	49,495	20,516	41.5	2.4	1.8	0.6
JetBlue Airways Corporation	61,108	55,832	5,276	9.4	146,111	132,872	13,239	10.0	4.9	4.8	0.1
Public Charters, Inc., d/b/a Texas Sky	208	125	83	66.4	467	356	111	31.2	0.0	0.0	0.0
Southwest Airlines	424,426	403,399	21,027	5.2	1,124,911	1,094,079	30,832	2.8	38.0	39.4	-1.4
Sun Country Airlines/ MN Airlines, LLC	560	458	102	22.3	1,670	1,472	198	13.5	0.1	0.1	0.0
Swift Air, LLC	0	0	0	0.0	136	0	136	0.0	0.0	0.0	0.0
United Airlines, Inc.	196,614	181,728	14,886	8.2	464,088	442,910	21,178	4.8	15.7	15.9	-0.3
Virgin America Inc.	14,729	15,553	-824	-5.3	38,962	39,900	-938	-2.4	1.3	1.4	-0.1
Volaris	1,819	0	1,819	0.0	4,857	0	4,857	0.0	0.2	0.0	0.2
Xtra Airways/Casino Express	0	294	-294	-100.0	136	577	-441	-76.4	0.0	0.0	0.0
Report Totals	1,156,928	1,066,146	90,782	8.5%	2,963,199	2,778,919	184,280	6.6%			

Statistics Included in Report:

Domestic Passengers:	Enplaned Revenue, Deplaned Revenue, Enplaned Non-Revenue, Deplaned Non-Revenue
International Passengers:	Enplaned Revenue, Deplaned Revenue, Enplaned Non-Revenue, Deplaned Non-Revenue
International Pre-Cleared Passengers:	Enplaned Revenue, Deplaned Revenue, Enplaned Non-Revenue, Deplaned Non-Revenue

Austin-Bergstrom International Airport

Summary Landing Report

Landing Type: Total

Month	2017		2016		2015		% Change 2017 - 2016		% Change 2016 - 2015	
	Count	Weight	Count	Weight	Count	Weight	Count	Weight	Count	Weight
January	4,768	612,688,871	4,622	560,718,408	4,480	530,688,382	3.16%	9.27%	3.17%	5.66%
February	4,357	552,711,639	4,387	527,452,920	3,992	477,489,019	-0.68%	4.79%	9.89%	10.46%
March	5,307	685,661,659	5,151	639,655,137	4,872	584,604,521	3.03%	7.19%	5.73%	9.42%
April			4,892	614,643,711	4,875	593,462,176			0.35%	3.57%
May			5,096	630,853,941	5,161	625,876,151			-1.26%	0.80%
June			5,179	651,537,449	5,239	644,690,908			-1.15%	1.06%
July			5,233	663,015,597	5,503	676,131,170			-4.91%	-1.94%
August			5,181	660,099,361	5,277	652,770,571			-1.82%	1.12%
September			4,738	623,397,035	4,833	598,547,454			-1.97%	4.15%
October			4,923	649,182,343	4,891	611,952,269			0.65%	6.08%
November			4,775	624,303,554	4,815	605,234,834			-0.83%	3.15%
December			4,893	629,611,090	5,100	633,215,540			-4.06%	-0.57%
Totals for Selected Period	14,432	1,851,062,169	14,160	1,727,826,465	13,344	1,592,781,922	1.92%	7.13%	6.12%	8.48%
Yearly Totals	14,432	1,851,062,169	59,070	7,474,470,546	59,038	7,234,662,995			0.05%	3.31%